



Hamilton

VICTORIA PARK IMPROVEMENTS – SPRAY PAD & SUN SHELTER VIRTUAL CONSULTATION MEETING

NOVEMBER 23, 2021

TONIGHT'S FORMAT

- WELCOME
- LAND ACKNOWLEDGEMENT
- THE MASTER PLAN PROCESS
- OVERVIEW ON HOW TO INTERACT THROUGH ZOOM
- STAFF PRESENTATION – DESIGN CONCEPTS
- Q & A / DISCUSSION

LAND ACKNOWLEDGMENT

The City of Hamilton is situated upon the traditional territories of the Erie, Neutral, Huron-Wendat, Haudenosaunee and Mississaugas. This land is covered by the Dish With One Spoon Wampum Belt Covenant, which was an agreement between the Haudenosaunee and Anishinaabek to share and care for the resources around the Great Lakes. We further acknowledge that this land is covered by the Between the Lakes Purchase, 1792, between the Crown and the Mississaugas of the Credit First Nation.

Today, the City of Hamilton is home to many Indigenous people from across Turtle Island (North America) and we recognize that we must do more to learn about the rich history of this land so that we can better understand our roles as residents, neighbours, partners and caretakers.

THE TEAM

Maureen Wilson,
Ward 1 Councillor

John Vandriel,
Landscape Architectural Services

Wes Kindree,
Landscape Architectural Services

Cindi Rowan,
FORREC Consulting



Hamilton



PRESENTATION AGENDA

- INTRODUCTION / BACKGROUND
 - What We're Doing / Why We're Doing This
 - Victoria Park Context
- OVERVIEW OF FUTURE PARK IMPROVEMENTS
 - Presenting the Design Concepts
- HOW TO GET INVOLVED / STAY INFORMED
- Q & A / DISCUSSION

WHAT ARE WE DOING?

- **Presenting design concepts of the spray pad / sun shelter area**, based on initial consultation completed earlier this year.
- **Continuing the dialogue** between City staff and the community.



WHY ARE WE DOING THIS?

- There is an inherent value in public space
 - Investments are ***needed now, more than ever***



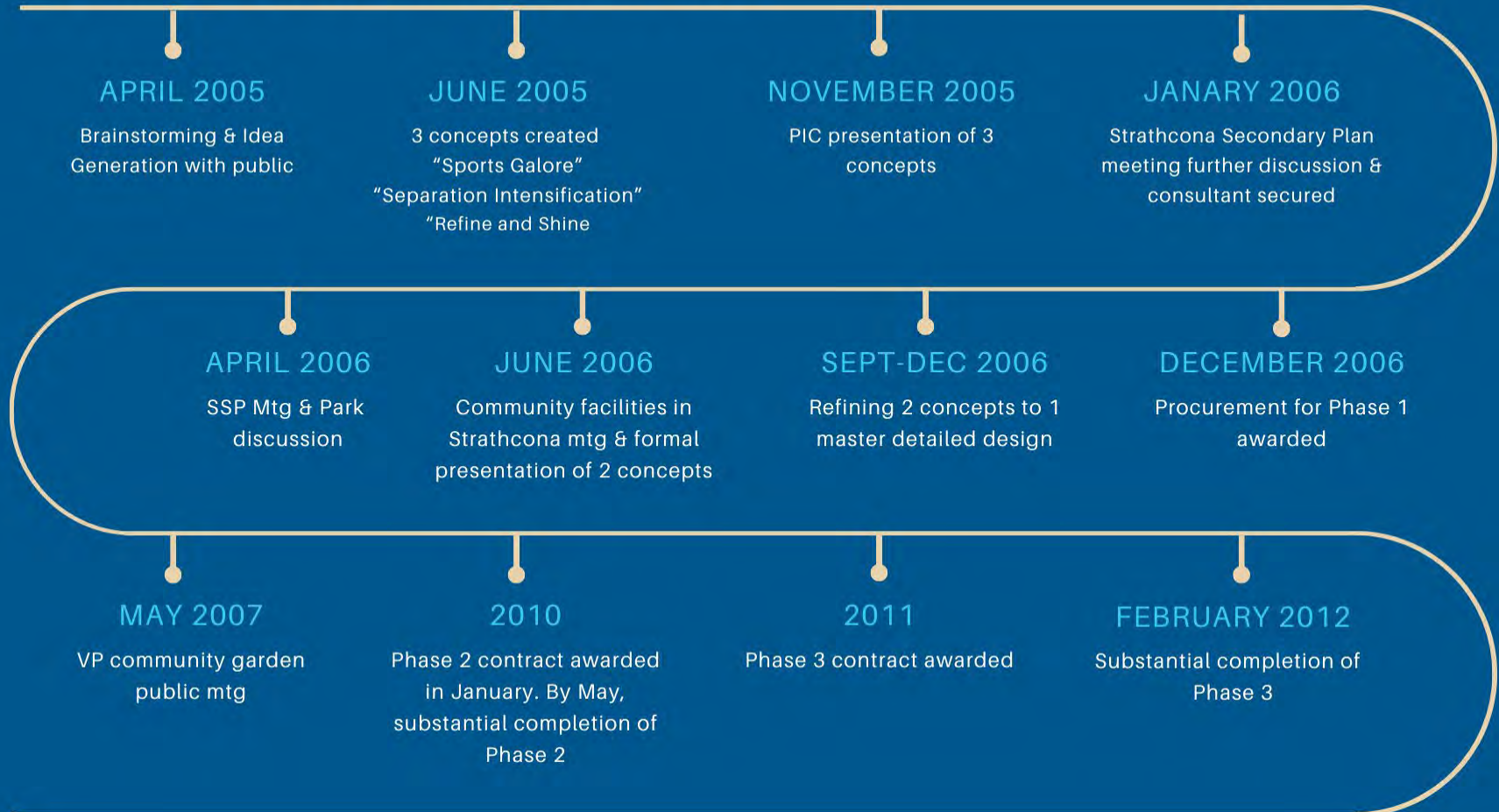
WHY ARE WE DOING THIS?

- We are continuing the legacy of the Victoria Park Master Plan implementation: ***a multi-year park renewal plan***;

Victoria Park Master Plan, 2007



Victoria Park Master Plan Timeline



Victoria Park Master Plan Timeline cont.



THE NEED FOR PARK AMENITY UPGRADES:

- Spray pad is at the ***end of its life cycle*** and requires replacement;
- Sun shelter forms part of the ***Victoria Park Master Plan implementation***





CONTEXT / BACKGROUND

SITE CONTEXT: PARK AMENITIES

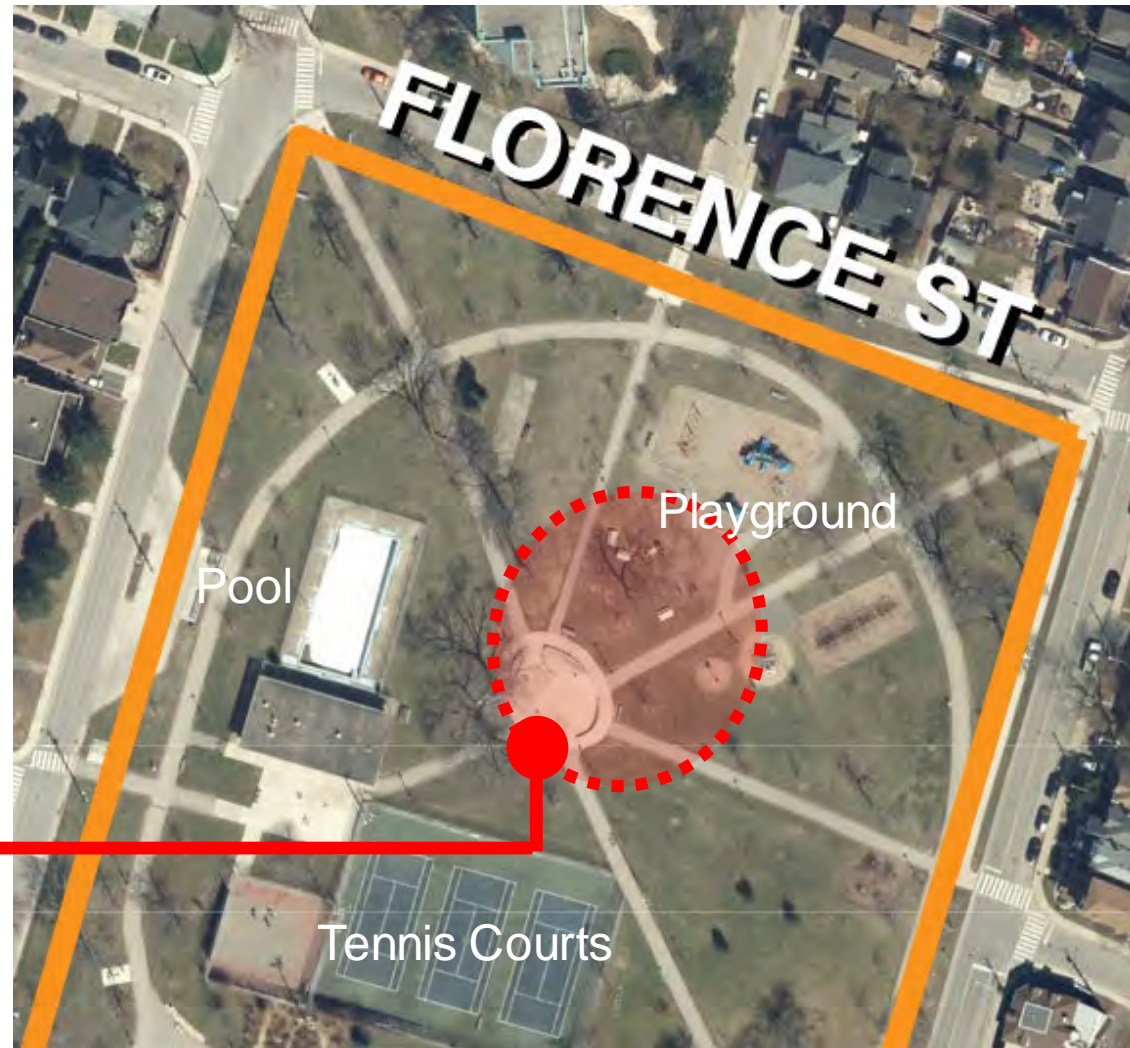
Area of Focus:

- Spray Pad & New Sun Shelter

- Pool and Pool House
- Play Structures and Swings
- Tennis Courts
- Community Garden
- Fitness Equipment
- Parking Lot
- Open Lawn
- Multi-Use Courts
- SoBi Bike Station
- Park Facility Building
- Baseball Field
- Perimeter Pathway Loop



SPRAY PAD REPLACEMENT AND NEW SUN SHELTER



Spray Pad Replacement
and New Sun Shelter

DIGGING UP THE PAST

ARCHAEOLOGICAL INVESTIGATION IN 2020:

- Test pit digging at the north end of the site, to document / uncover culturally-significant elements.
- The investigation is meant to inform:
 1. The design and location of new amenities
 2. Mitigation measures and methods to construction



WHAT WE HEARD FROM PREVIOUS CONSULTATION

CONSIDERATIONS:

- Locate both features in proximity to the existing spray pad and play structures
- Consider “natural” gathering focal point
- Consider pedestrian and cyclist circulation
- Pay tribute to the formal Crystal Palace structure that once stood at the site
- Preserve existing large mature trees

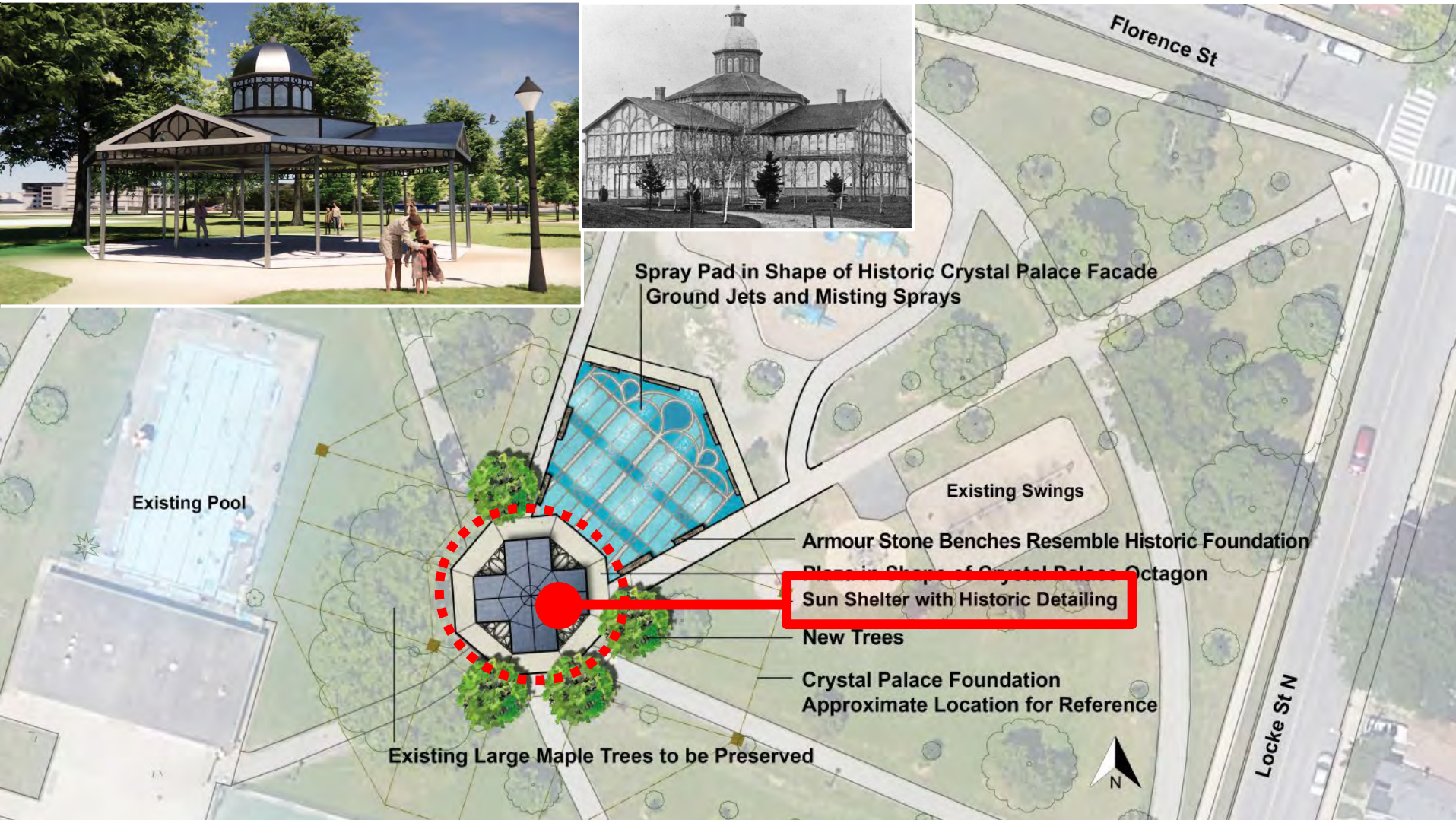


THE CONCEPTS

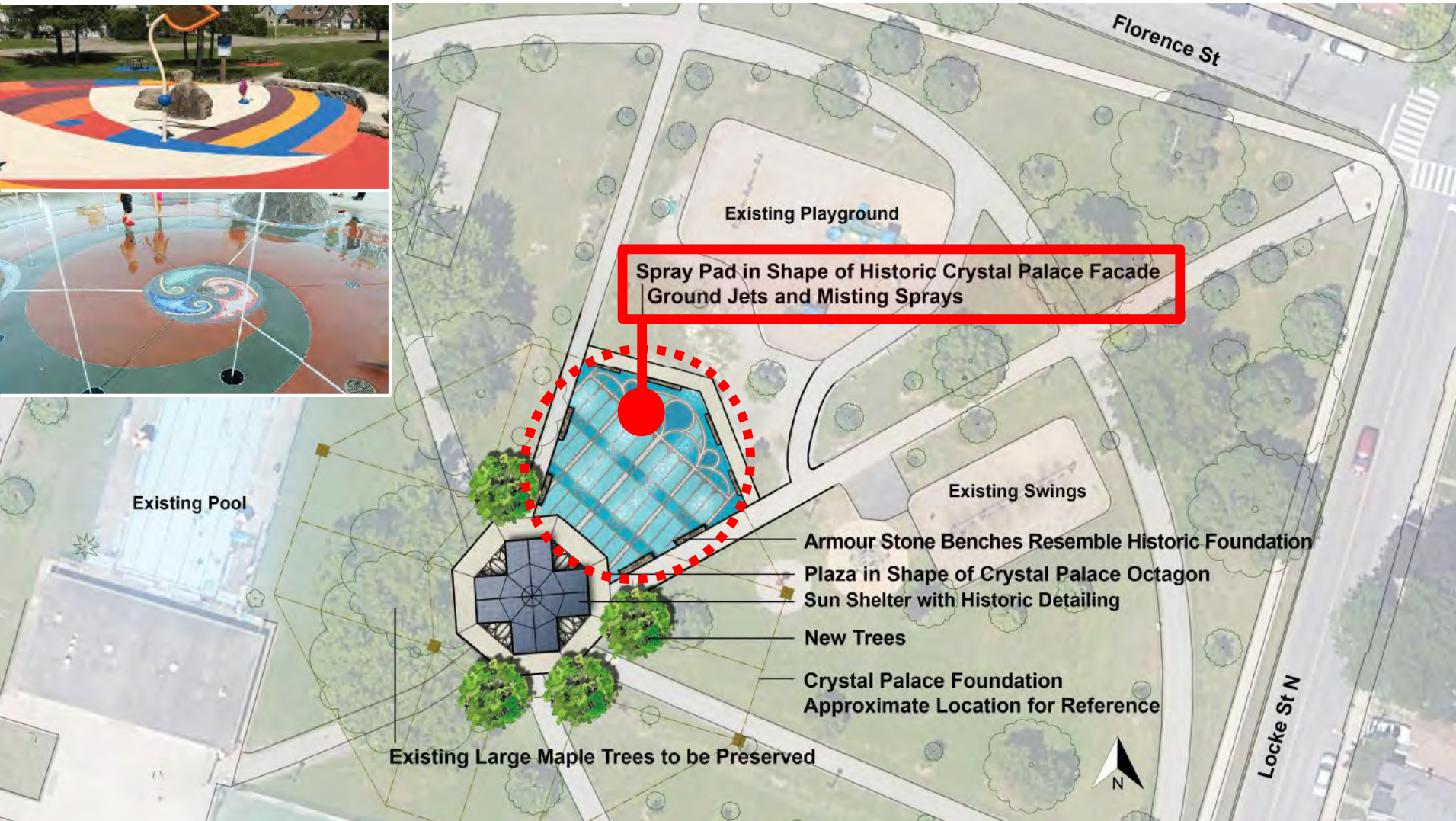
CONCEPT 1: REMEMBERING THE CRYSTAL PALACE



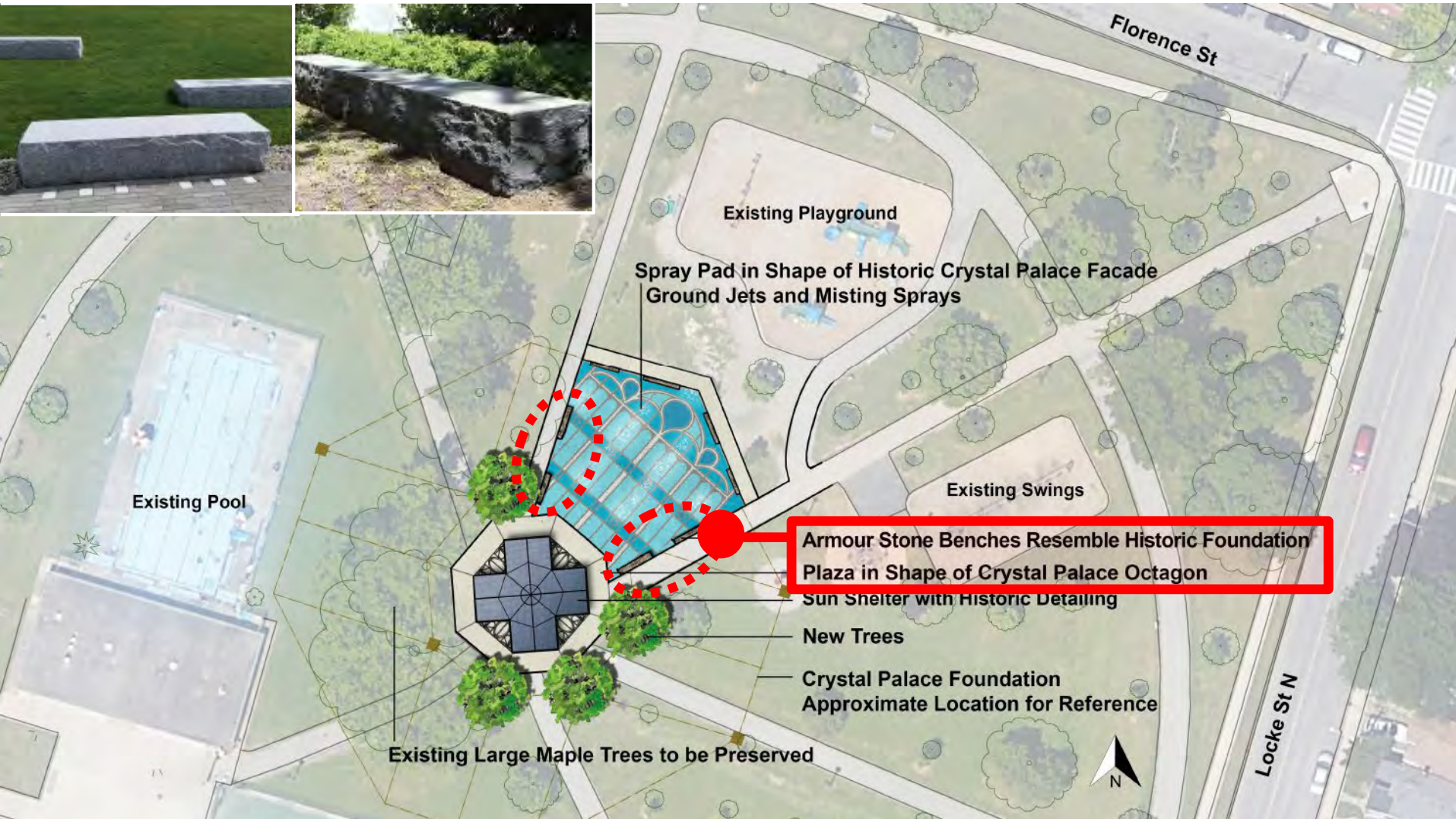
CONCEPT 1: REMEMBERING THE CRYSTAL PALACE



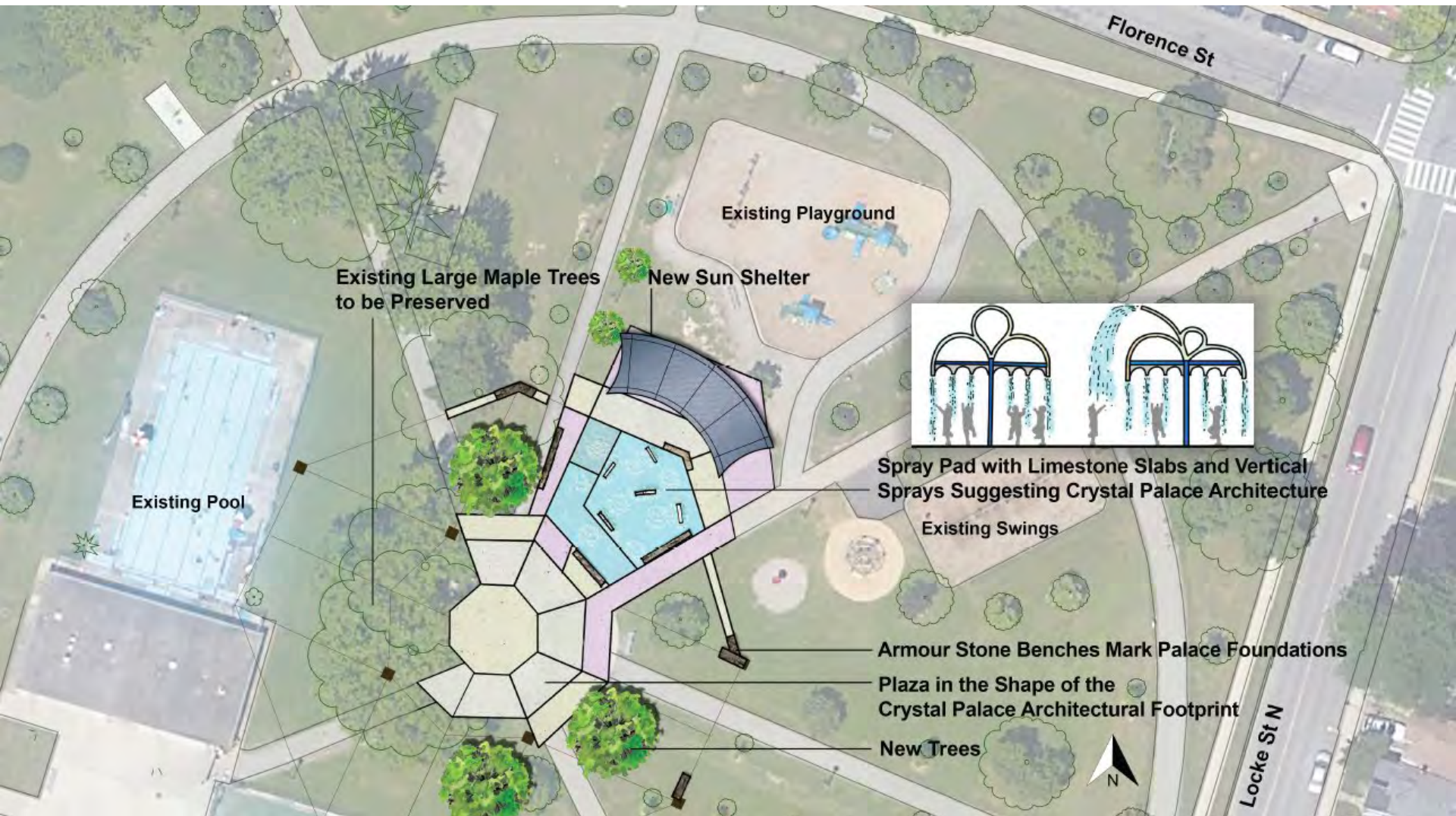
CONCEPT 1: REMEMBERING THE CRYSTAL PALACE



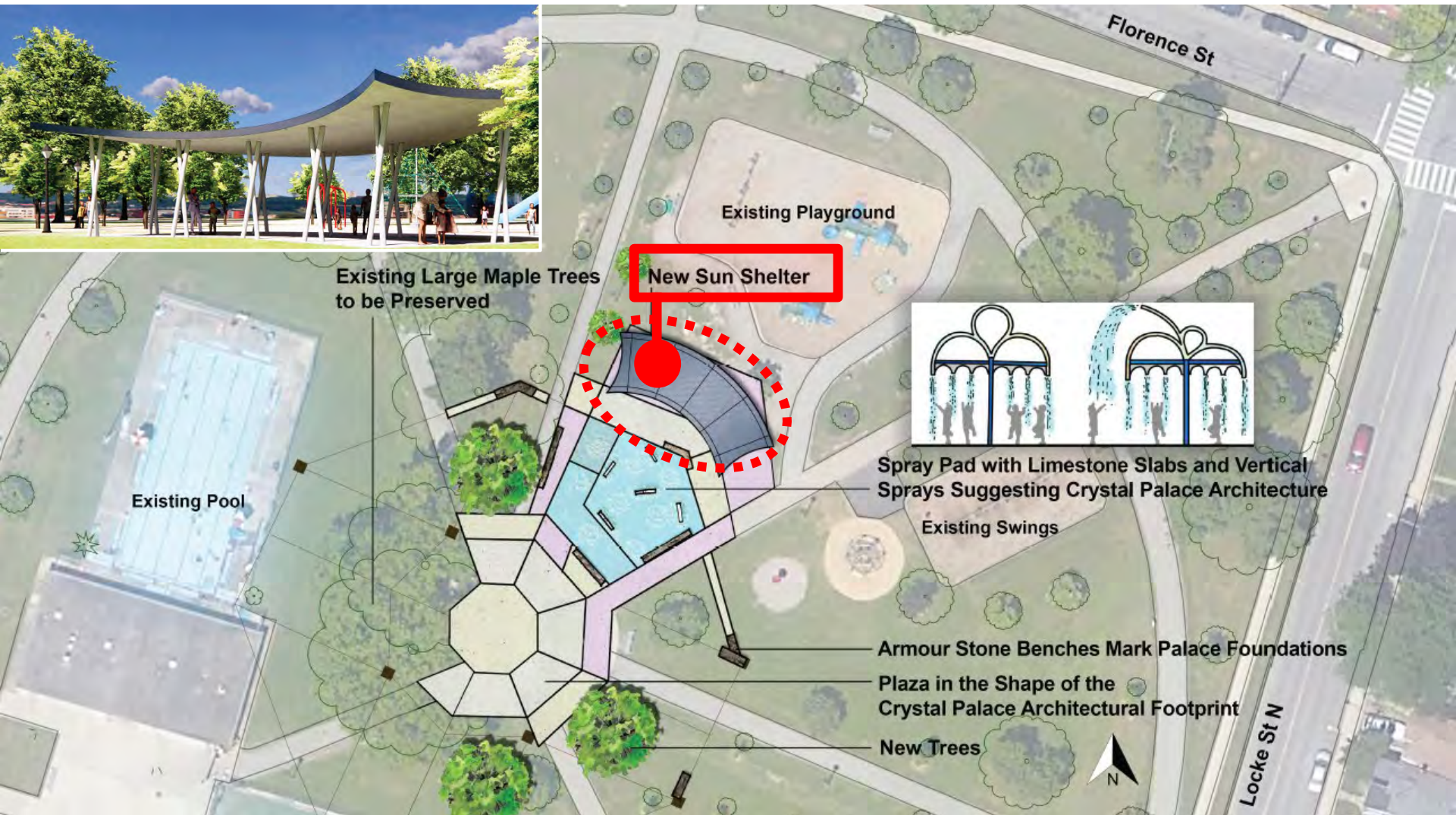
CONCEPT 1: REMEMBERING THE CRYSTAL PALACE



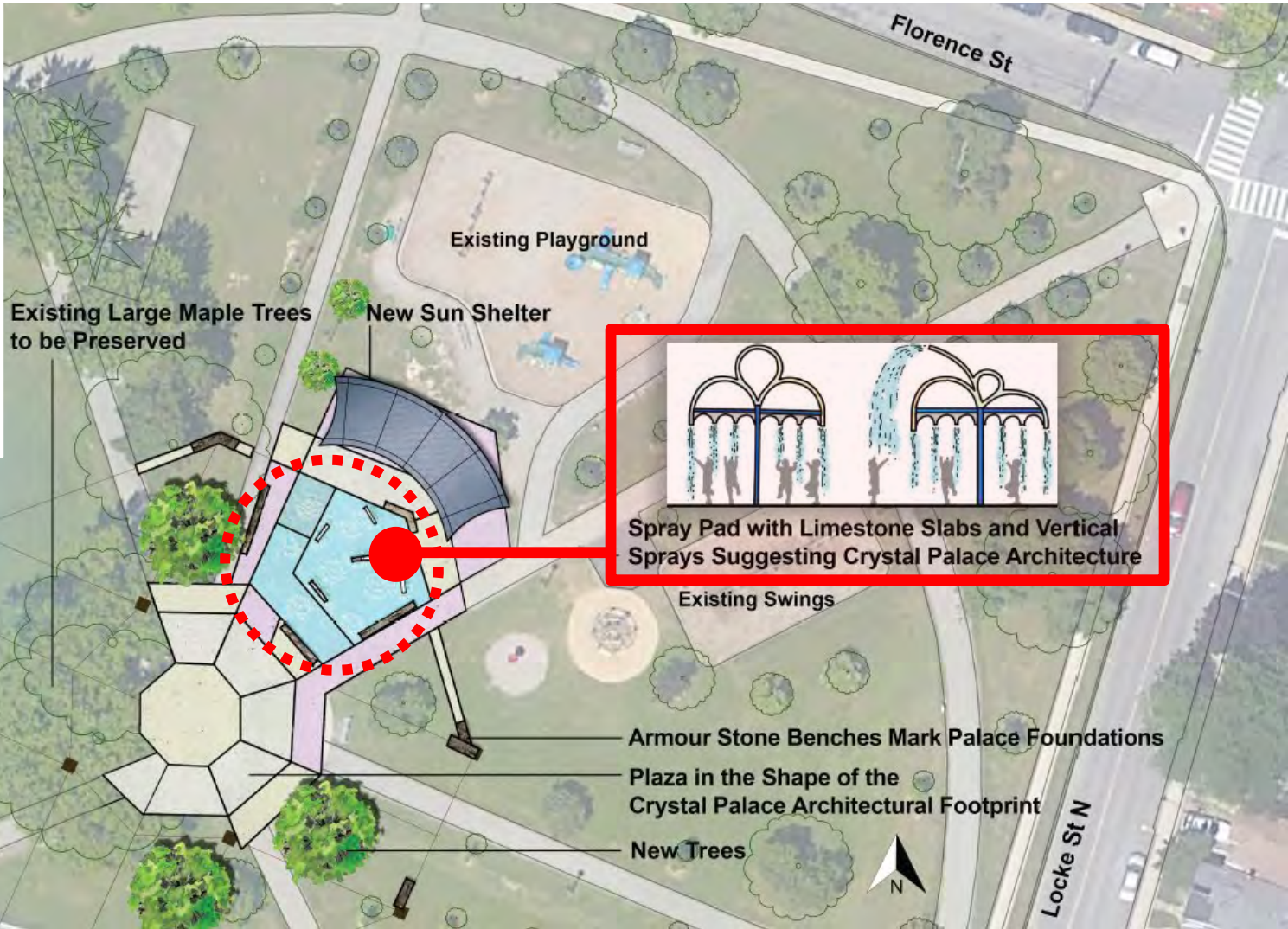
CONCEPT 2: STYLIZING THE CRYSTAL PALACE



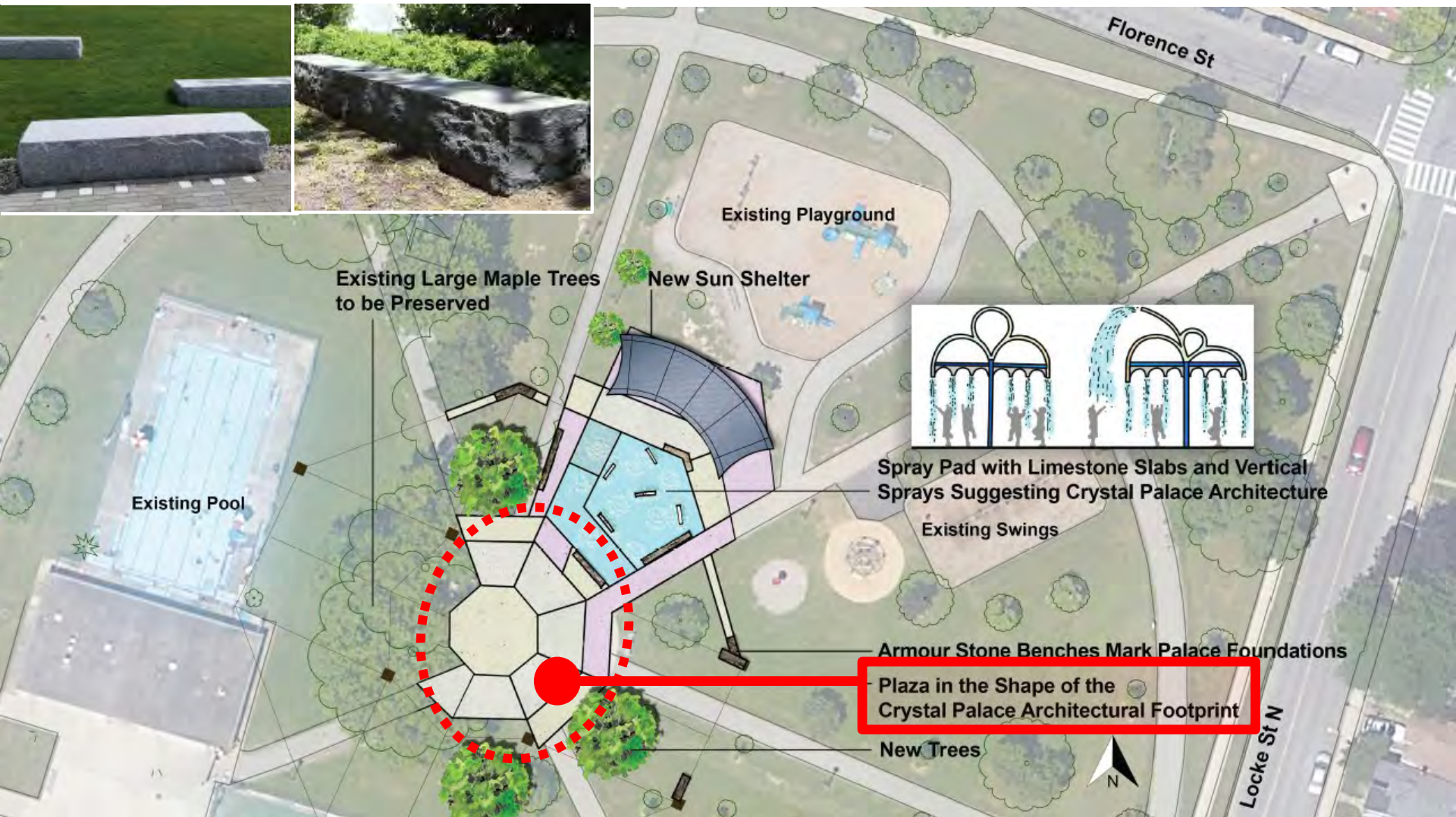
CONCEPT 2: STYLIZING THE CRYSTAL PALACE



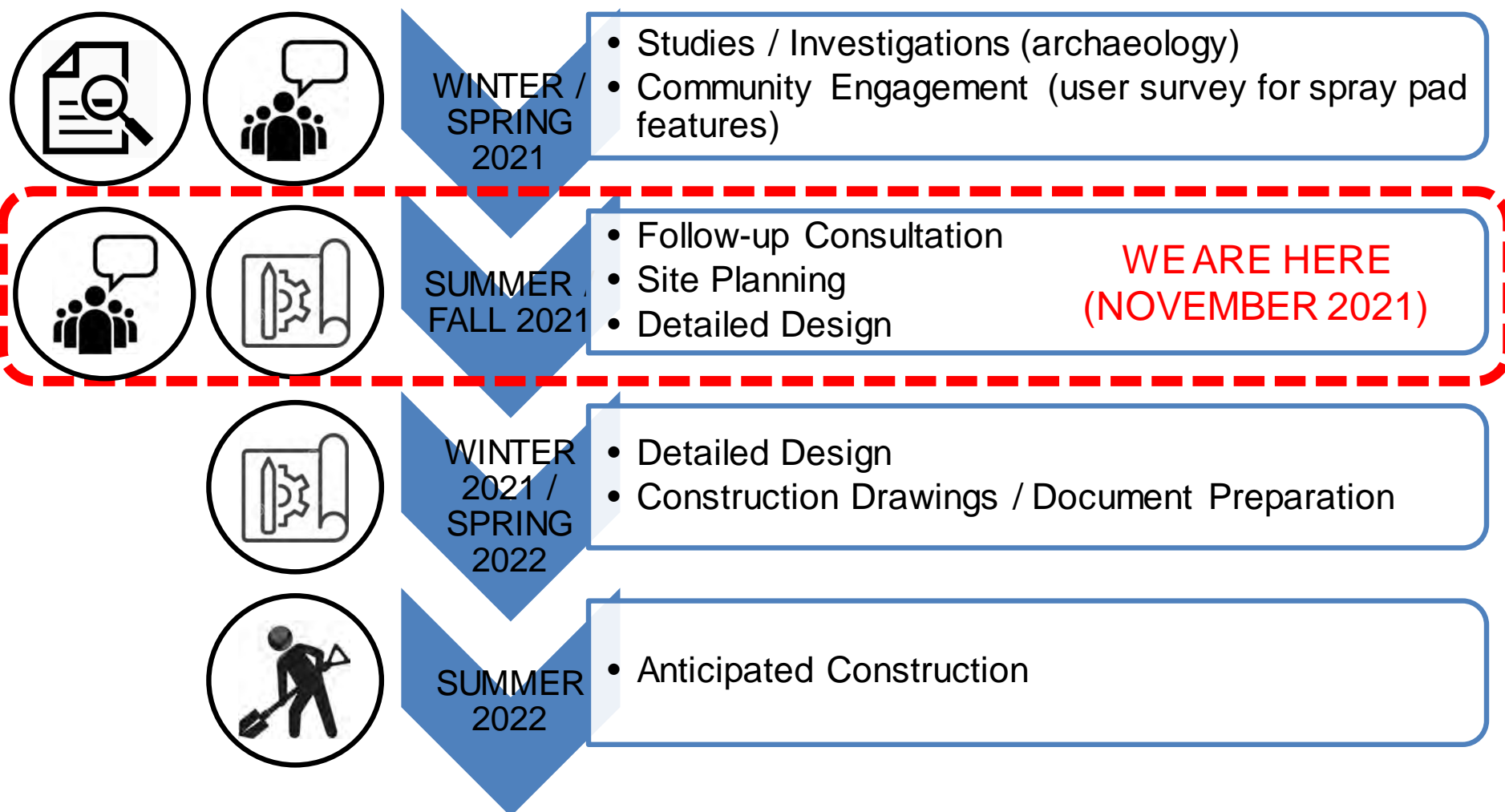
CONCEPT 2: STYLIZING THE CRYSTAL PALACE



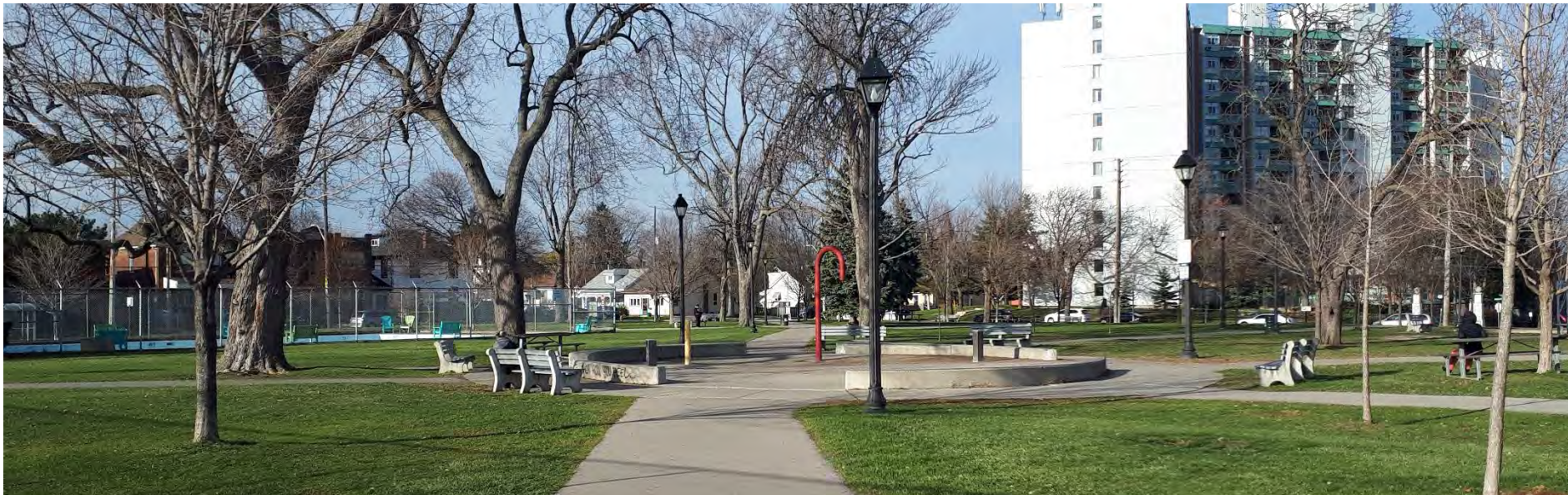
CONCEPT 2: STYLIZING THE CRYSTAL PALACE



TIMELINE



- Much-needed life cycle replacement work.
- Following through with the Master Plan implementation.
- Improvements will add value to the existing user experience in Victoria Park





HOW TO GET INVOLVED / STAY INFORMED

OUTREACH

ASK QUESTIONS



- Virtual Public Meeting
TONIGHT!

TELL US WHAT YOU THINK



- Online Survey
**OPEN UNTIL
DECEMBER 7**

STAY INFORMED



- Website Updates

engage.hamilton.ca



CONTACTS / WHO'S LISTENING

John Vandriel,
Landscape Architectural Services
Johnathan.Vandriel@hamilton.ca



THANK YOU

DISCUSSION / Q & A



www.engage.hamilton.ca/VictoriaPark
www.hamilton.ca/VictoriaParkImprovements