


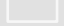





Appendix B

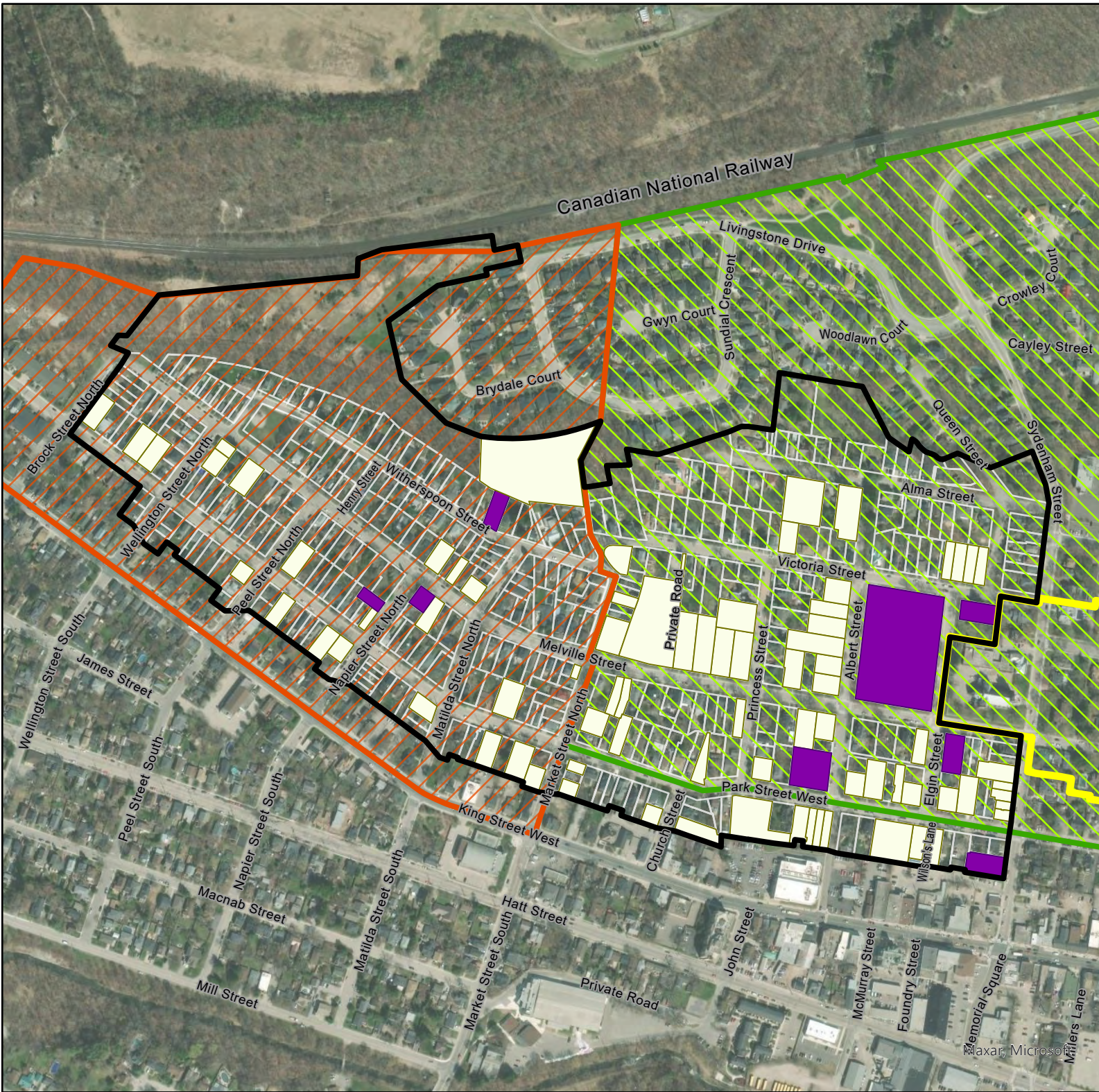
Fieldwork Map Figures/Findings

Figure 3 Heritage Status

Melville Street Heritage Conservation District
Dundas
City of Hamilton, Ontario

LEGEND

-  Study Area
-  Parcels
-  Cross-Melville Heritage Conservation District
- Heritage Status**
-  Designated (Part IV) (8)
-  Inventoried (80)
- Neighbourhoods**
-  Colborne
-  Sydenham



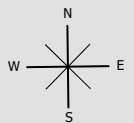
Source: City of Hamilton Open Data (c) 2023,
Aerial from MAXAR (c) 2021

Date: 25 May 2023

File: 0727AV

Scale: 1:5,500

Drawn: CF













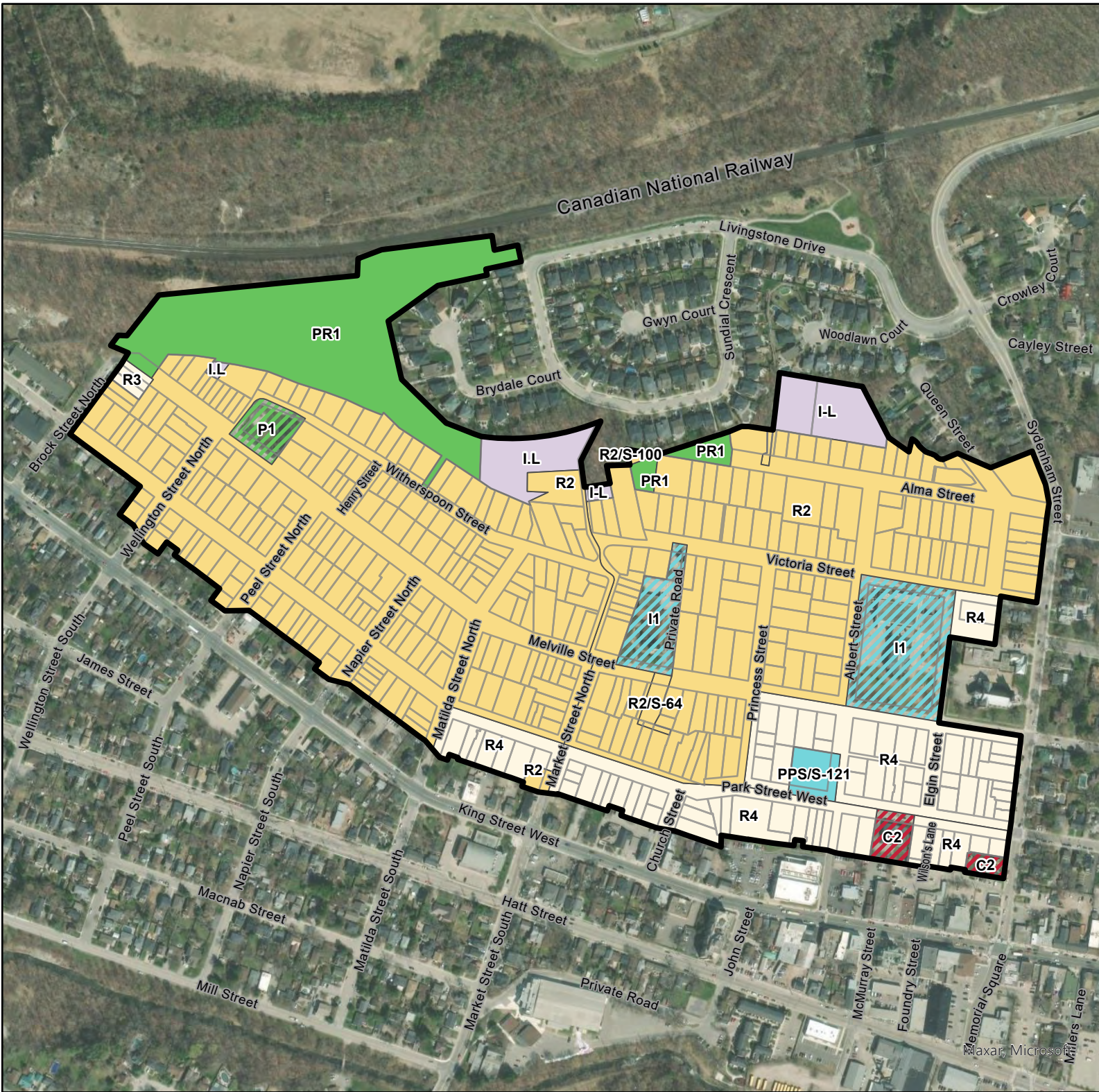
Document Path: K:\0727AV- Dundas Heritage Project\GIS\0727AV_MelvilleSt_HeritageInventory_v2.aprx

Figure 4 Zoning

Melville Street Heritage Conservation District
Dundas
City of Hamilton, Ontario

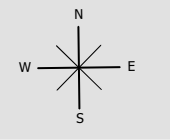
LEGEND

-  Study Area
-  Parcels
- Zoning By-Law No. 3581-86 Descriptions**
-  Light Industrial
-  Low Density Residential
-  Single Detached Residential
-  Park And Recreation
-  Public And Private Service
- Zoning By-Law No. 05-200 Descriptions**
-  Neighbourhood Commercial
-  Neighbourhood Institutional
-  Neighbourhood Park



Source: City of Hamilton Open Data (c) 2023,
Aerial from MAXAR (c) 2021

Date: 27 May 2023
File: 0727AV
Scale: 1:5,500
Drawn: CF




Document Path: K:\0727AV- Dundas Heritage Project\GIS\0727AV_MelvilleSt_HeritageInventory_v2.aprx

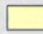
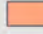
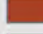
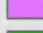



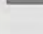
Figure 5 Type of Property

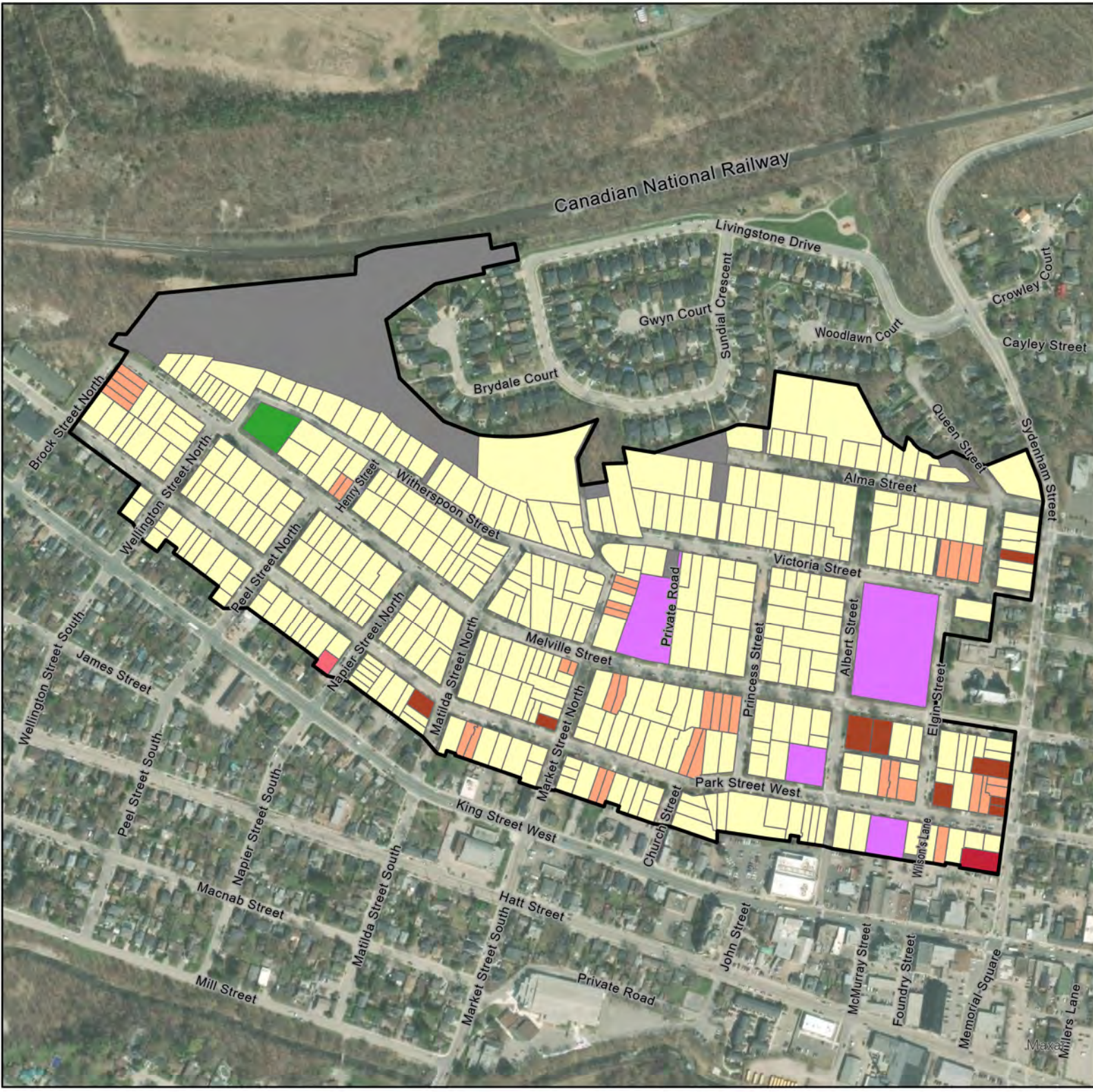
Melville Street Heritage Conservation District
Dundas
City of Hamilton, Ontario

LEGEND

 Study Area

Type of Property

-  Single-detached (359)
-  Semi-detached, related (37)
-  Multi-residential (9)
-  Institutional or Public Building (4)
-  Landscape Feature (1)
-  Commercial (1)
-  Mixed Use (1)
-  N/A or Other (9)



Source: City of Hamilton Open Data (c) 2023,
Aerial from MAXAR (c) 2021

Date: 21 Sep 2023

File: 0727AV

Scale: 1:5,500

Drawn: CF



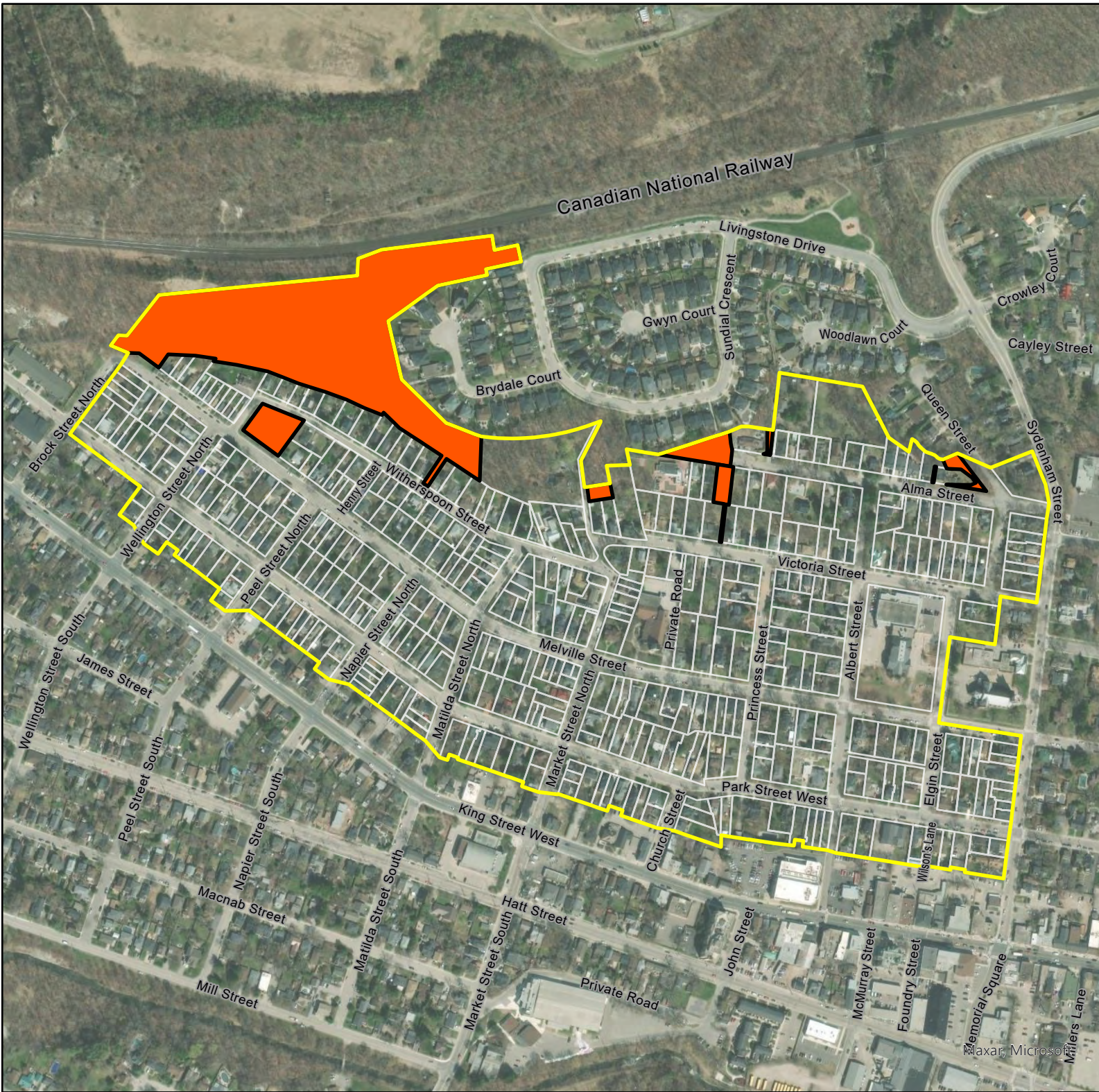
Document Path: K:\0727AV- Dundas Heritage Project\GIS\0727AV_MelvilleSt_HeritageInventory_v2.aprx

Figure 6 Vacant Properties (Contributing)

Melville Street Heritage Conservation District
Dundas
City of Hamilton, Ontario

LEGEND

- Vacant Properties (8)
- Study Area
- Parcels



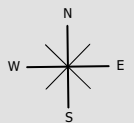
Source: City of Hamilton Open Data (c) 2023,
Aerial from MAXAR (c) 2021

Date: 27 May 2023

File: 0727AV

Scale: 1:5,500

Drawn: CF


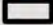





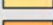
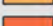



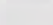


Document Path: K:\0727AV- Dundas Heritage Project\GIS\0727AV_MelvilleSt_HeritageInventory_v2.aprx

Figure 7 Construction Dates (20 years)

Melville Street Heritage Conservation District
Dundas
City of Hamilton, Ontario

LEGEND

-  Pre-1867 Buildings
-  Study Area
- Construction Date**
-  1830 to 1839 (2)
-  1840 to 1859 (22)
-  1860 to 1879 (51)
-  1880 to 1899 (81)
-  1900 to 1919 (135)
-  1920 to 1939 (49)
-  1940 to 1949 (44)
-  1960 to 1979 (7)
-  1980 to 1999 (9)
-  2000 to Present (12)
-  N/A or Unknown (9)



Source: City of Hamilton Open Data (c) 2023,
Aerial from MAXAR (c) 2021

Date: 29 Sep 2023
File: 0727AV
Scale: 1:5,500
Drawn: CF



Document Path: K:\0727AV- Dundas Heritage Project\GIS\0727AV_MelvilleSt_HeritageInventory_v2.aprx

Figure 8 Architectural Styles (General)

Melville Street Heritage Conservation District
Dundas
City of Hamilton, Ontario

LEGEND

Study Area

Parcels

Architectural Style / Influence

- Classical Revival (1830 - 1860) and Neo-Classical (1800 - 1860) (3)
- Regency (1830 - 1860) (1)
- Gothic Revival (1830 -1900) (14)
- Ontario Cottage (1840 -1900) (15)
- Worker's Cottage (1850 - 1910) (37)
- Late Victorian (1850 - 1910) (includes Romanesque Revival (1850 - 1910), Italianate (1850 - 1900), and Queen Anne Revival (1880 - 1910)) (45)
- Vernacular (95)
- Edwardian (1900 - 1930) (includes American Foursquare) (45)
- Bungalow (1900 - 1945) (18)
- Neo-Gothic (1900 - 1945) (1)
- Colonial Revival (1900 - Present) and Period Revivals (1900 - Present) (15)
- Victory Housing (1940 - 1950) (3)
- 1950s Contemporary (1945 - 1965) (13)
- Post Modern (1970 to Present) (27)
- Combination (3)
- Altered / Unknown / Other (77)

Source: City of Hamilton Open Data (c) 2023,
Aerial from MAXAR (c) 2021

Date: 25 Mar 2024

File: 0727AV

Scale: 1:5,500

Drawn: CF



Document Path: K:\0727AV\ Dundas Heritage Project\GIS\0727AV_MelvilleSt_HeritageInventory_23Mar2024.aprx



**PLANNING
URBAN DESIGN
& LANDSCAPE
ARCHITECTURE**

200-540 BEINGMANS CENTRE DRIVE, KITCHENER, ON, N2B 3X9 | P: 519.576.3650 | WWW.MHBCPLAN.COM

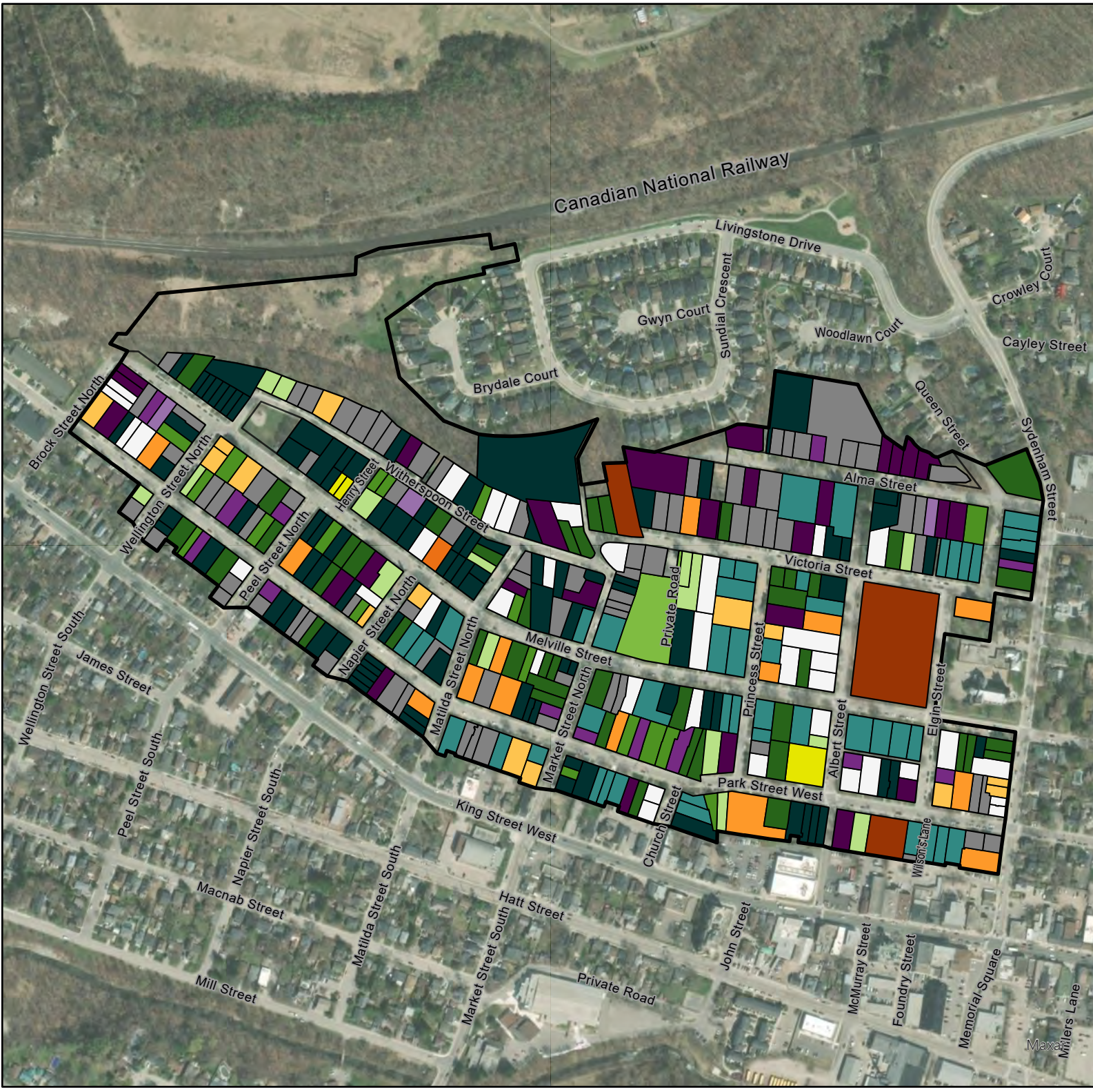







Figure 9 Integrity

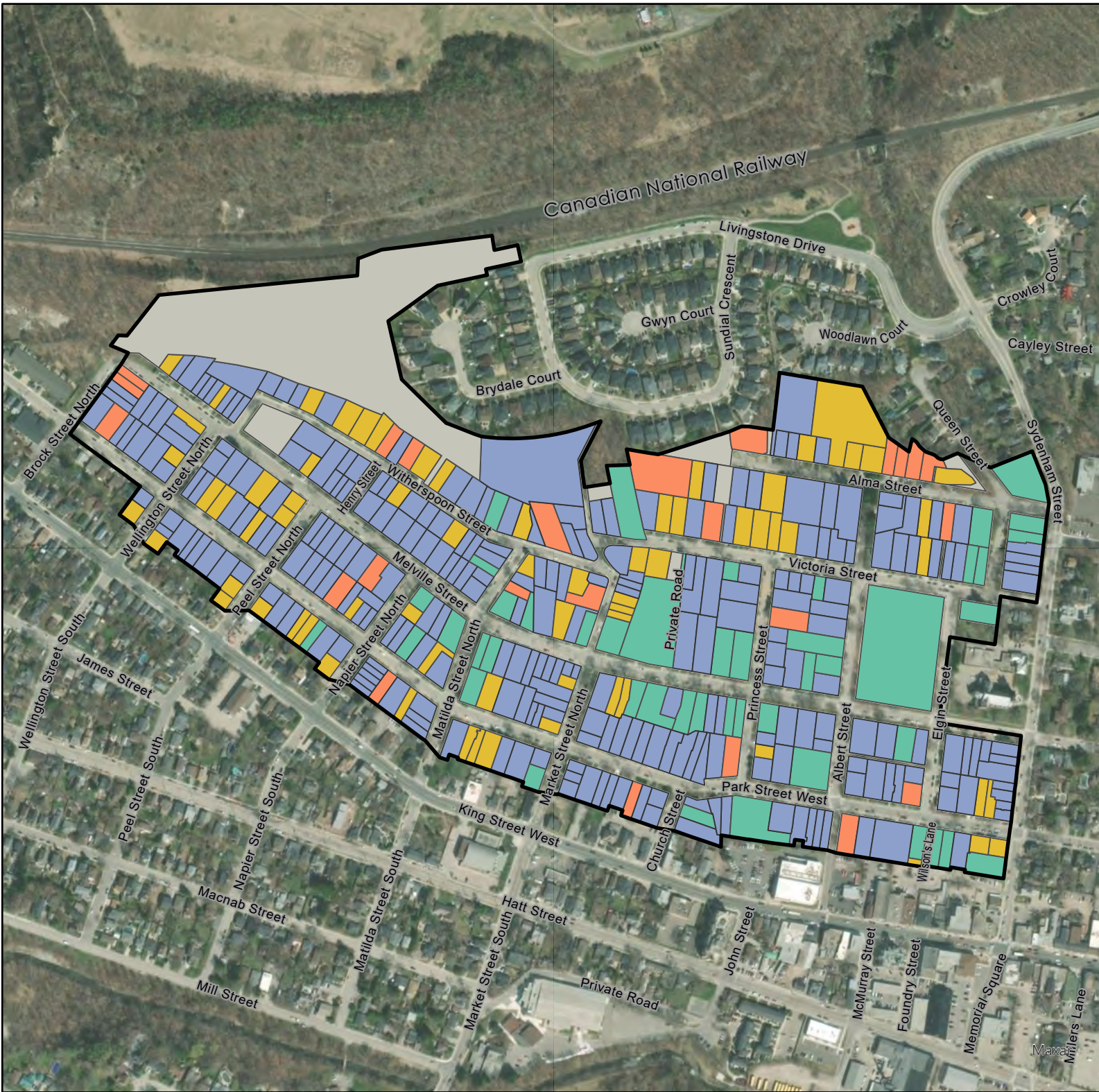
Melville Street Heritage Conservation District
Dundas
City of Hamilton, Ontario

LEGEND

 Study Area

Integrity

-  Compromised (69)
-  New/Recent Infill (24)
-  Modified (272)
-  Preserved/Intact (47)
-  N/A (9)



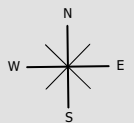
Source: City of Hamilton Open Data (c) 2023,
Aerial from MAXAR (c) 2021

Date: 25 Mar 2024

File: 0727AV

Scale: 1:5,500

Drawn: CF



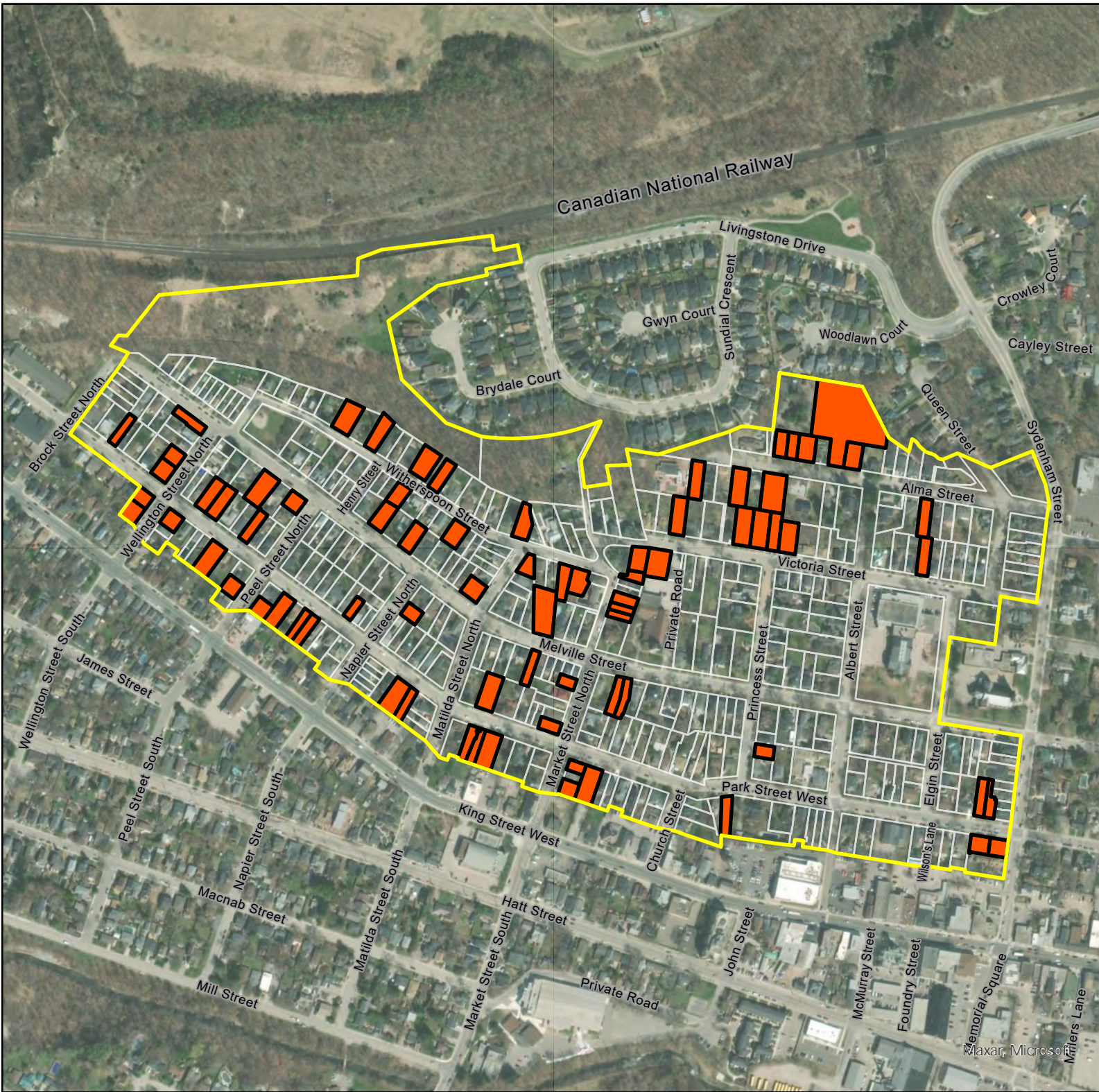
Document Path: K:\0727AV- Dundas Heritage Project\GIS\0727AV_MelvilleSt_HeritageInventory_v2.aprx

Figure 10 Significantly Altered Properties (Non-contributing)

Melville Street Heritage Conservation District
Dundas
City of Hamilton, Ontario

LEGEND

- Significantly altered/significant loss of heritage integrity (75)
- Study Area
- Parcels



Source: City of Hamilton Open Data (c) 2023,
Aerial from MAXAR (c) 2021

Date: 03 Oct 2023
File: 0727AV
Scale: 1: 5,500
Drawn: CF



Document Path: K:\0727AV- Dundas Heritage Project\GIS\0727AV_MelvilleSt_HeritageInventory_v2.aprx

Figure 11 Building Heights

Melville Street Heritage Conservation District
Dundas
City of Hamilton, Ontario

LEGEND

Study Area

Parcels

No. of Storeys

1 (87)

1.5 (123)

2 (87)

2.5 (109)

3 (5)

Irregular (1)



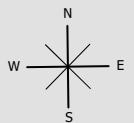
Source: City of Hamilton Open Data (c) 2023,
Aerial from MAXAR (c) 2021

Date: 25 Mar 2024

File: 0727AV

Scale: 1:5,500

Drawn: CF



Document Path: K:\0727AV- Dundas Heritage Project\GIS\0727AV_MelvilleSt_HeritageInventory_v2.aprx



PLANNING
URBAN DESIGN
& LANDSCAPE
ARCHITECTURE

200-540 BINGEMANS CENTRE DRIVE, KITCHENER, ON, N2B 3X9 | P: 519.576.3650 | WWW.MHBCPLAN.COM







Figure 12
Building Cladding

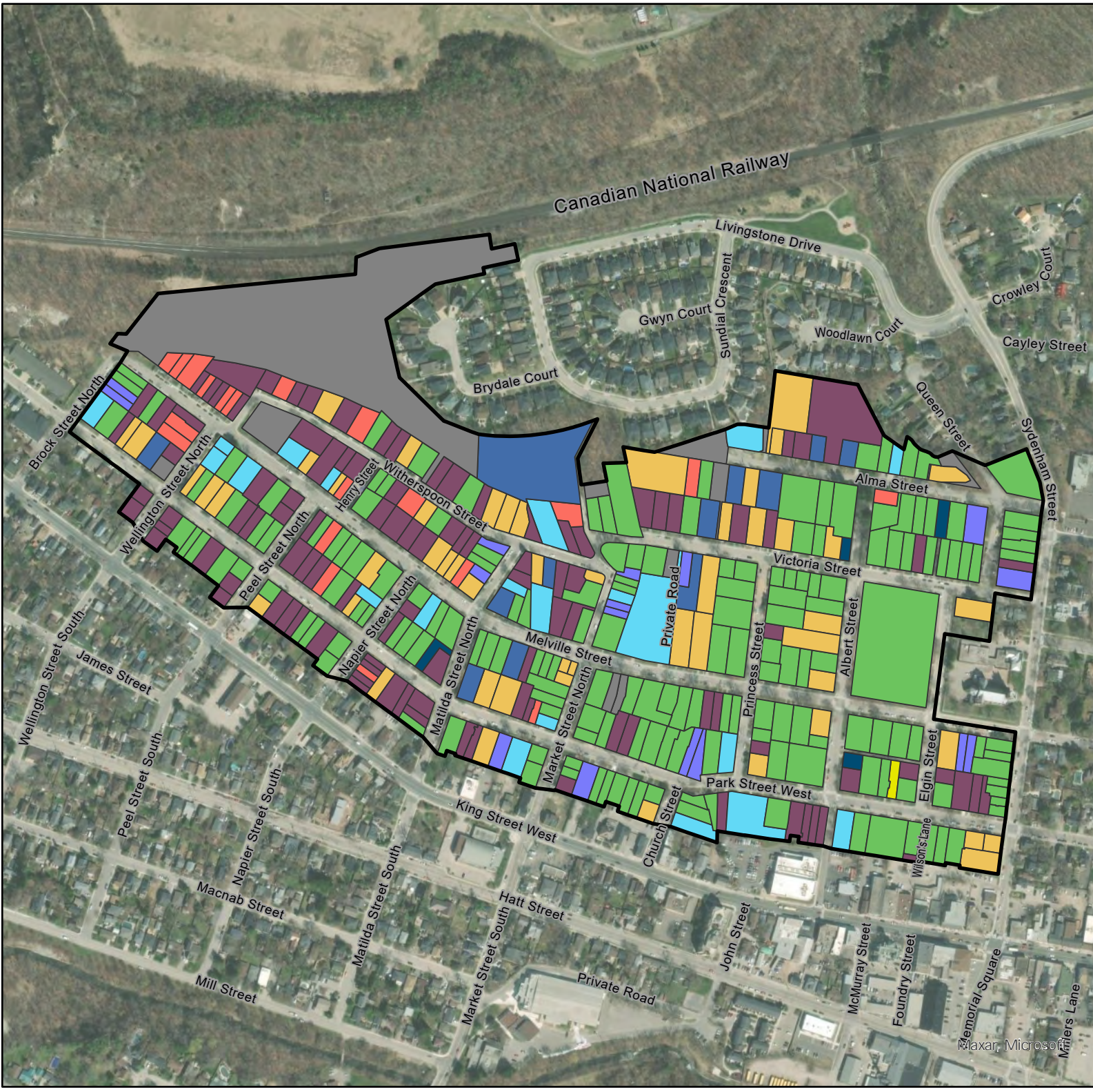
Melville Street Heritage Conservation District
Dundas
City of Hamilton, Ontario

LEGEND

 Study Area

Building Cladding Main

-  Brick (176)
-  Concrete (16)
-  Insulbrick (1)
-  Pebbledash (20)
-  Stone (21)
-  Stone Veneer (4)
-  Stucco (52)
-  Synthetic (107)
-  Wood (12)
-  N/A (12)



Source: City of Hamilton Open Data (c) 2023,
Aerial from MAXAR (c) 2021

Date: 03 Oct 2023

File: 0727AV

Scale: 1: 5,500

Drawn: CF



Document Path: K:\0727AV- Dundas Heritage Project\GIS\0727AV_MelvilleSt_HeritageInventory_v2.aprx

Figure 13
Roof Type and Materials

Melville Street Heritage Conservation District
 Dundas
 City of Hamilton, Ontario

LEGEND

Study Area

Parcels

Roof Type

- Combination (48)
- Flat (1)
- Gable (223)
- Gambrel (7)
- Hip (118)
- Jerkinhead (4)
- Mansard (3)
- Saltbox (8)

Roof Materials

- Asphalt Shingle (390)
- Metal (9)
- Slate (1)
- Tar / Gravel (1)
- Tile / Terra Cotta (1)
- Wood Shingle (4)
- Other (6)

Source: City of Hamilton Open Data (c) 2023,
 Aerial from MAXAR (c) 2021

Date: 02 Oct 2023

File: 0727AV

Scale: 1:5,500

Drawn: CF

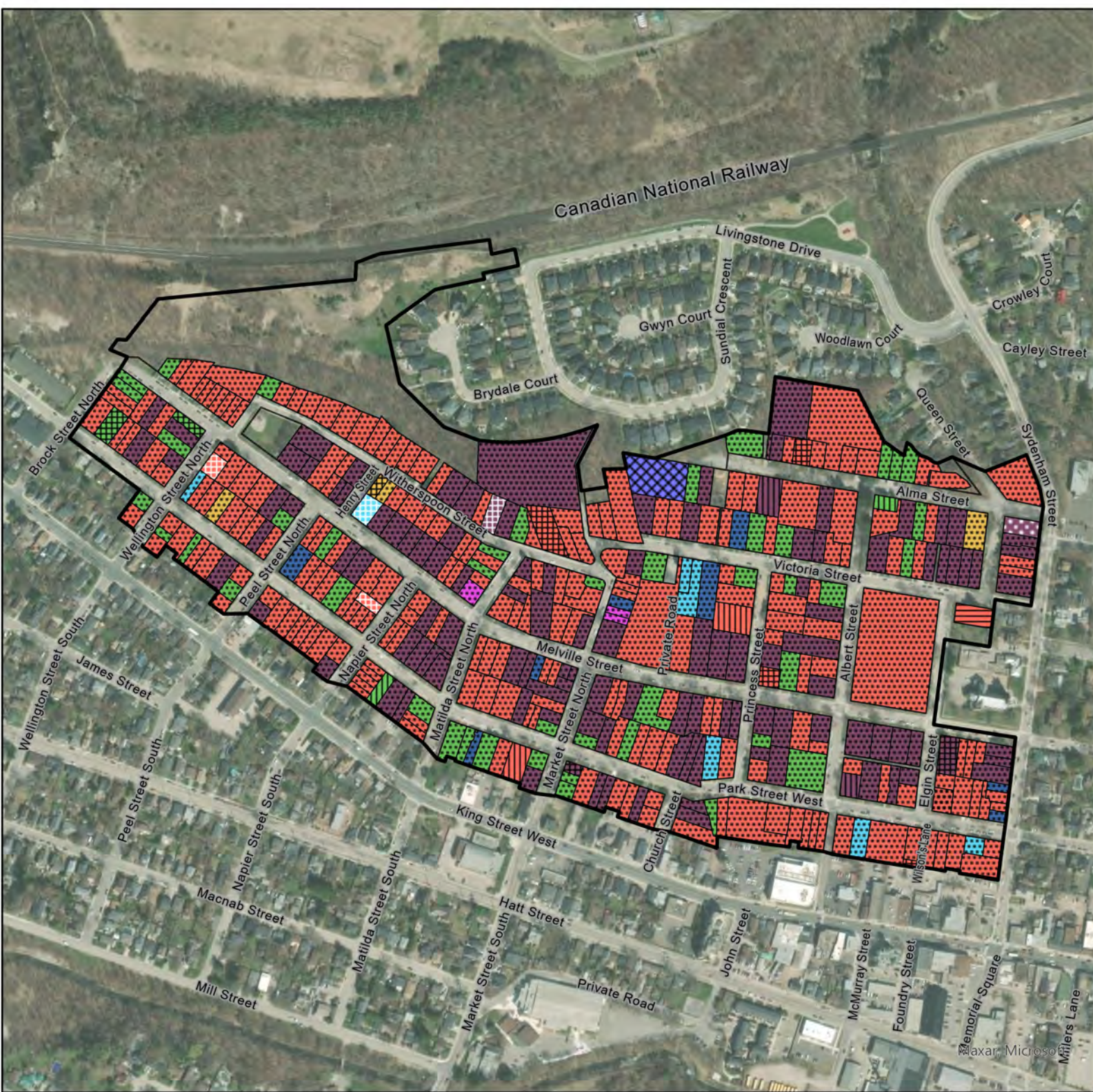


Document Path: K:\0727AV- Dundas Heritage Project\GIS\0727AV_MelvilleSt_HeritageInventory_v2.aprx



PLANNING
URBAN DESIGN
& LANDSCAPE
ARCHITECTURE

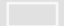
200-540 BINGEMANS CENTRE DRIVE, KITCHENER, ON, N2B 3X9 | P: 519.576.3650 | WWW.MHBCPLAN.COM

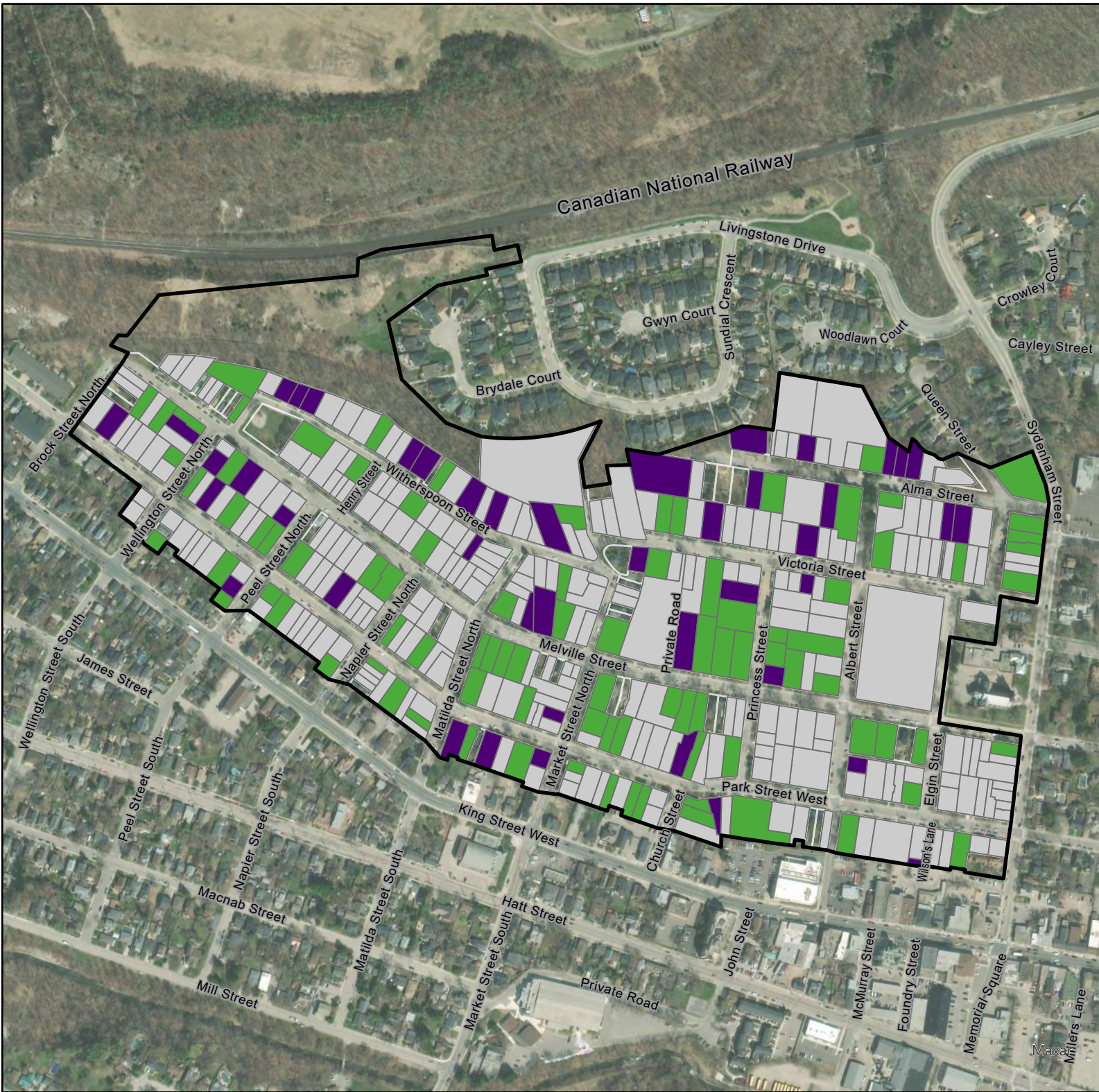


**Figure 14
Parking**

Melville Street Heritage Conservation District
Dundas
City of Hamilton, Ontario

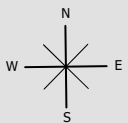
LEGEND

-  Study Area
-  Parcels
- Parking**
-  Attached Garage (44)
-  Detached Garage (92)
-  No garage/surface parking (249)



Source: City of Hamilton Open Data (c) 2023,
Aerial from MAXAR (c) 2021

Date: 27 May 2023
File: 0727AV
Scale: 1:5,500
Drawn: CF



Document Path: K:\0727AV- Dundas Heritage Project\GIS\0727AV_MelvilleSt_HeritageInventory_v2.aprx

Figure 15 Setbacks

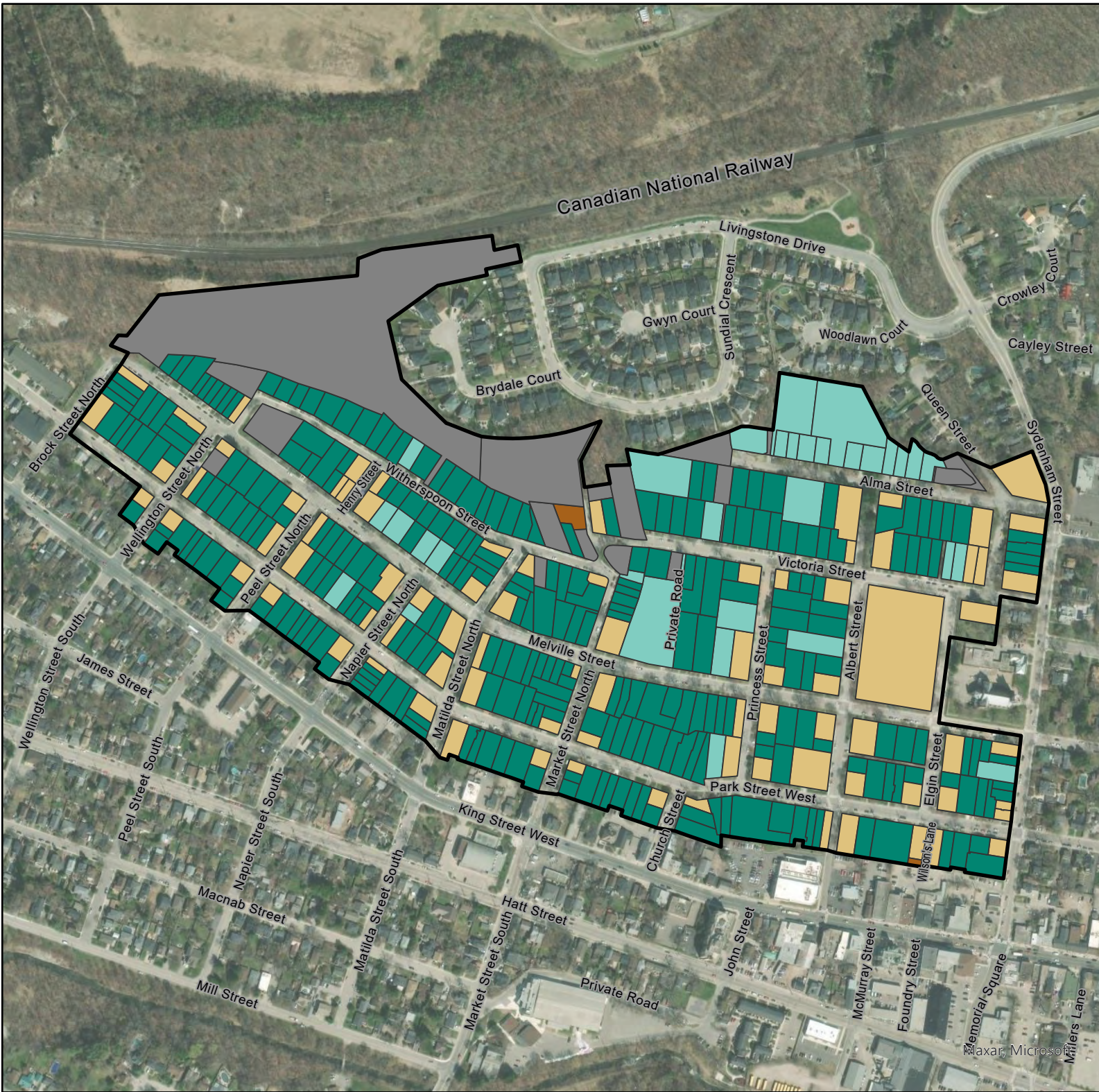
Melville Street Heritage Conservation District
Dundas
City of Hamilton, Ontario

LEGEND

Study Area

Setback

- At ROW (2)
- Corner Lot (85)
- Deep (32)
- Shallow (284)
- N/A and Other (18)



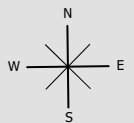
Source: City of Hamilton Open Data (c) 2023,
Aerial from MAXAR (c) 2021

Date: 28 May 2023

File: 0727AV

Scale: 1:5,500

Drawn: CF



Document Path: K:\0727AV- Dundas Heritage Project\GIS\0727AV_MelvilleSt_HeritageInventory_v2.aprx



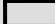
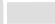

PLANNING
URBAN DESIGN
& LANDSCAPE
ARCHITECTURE

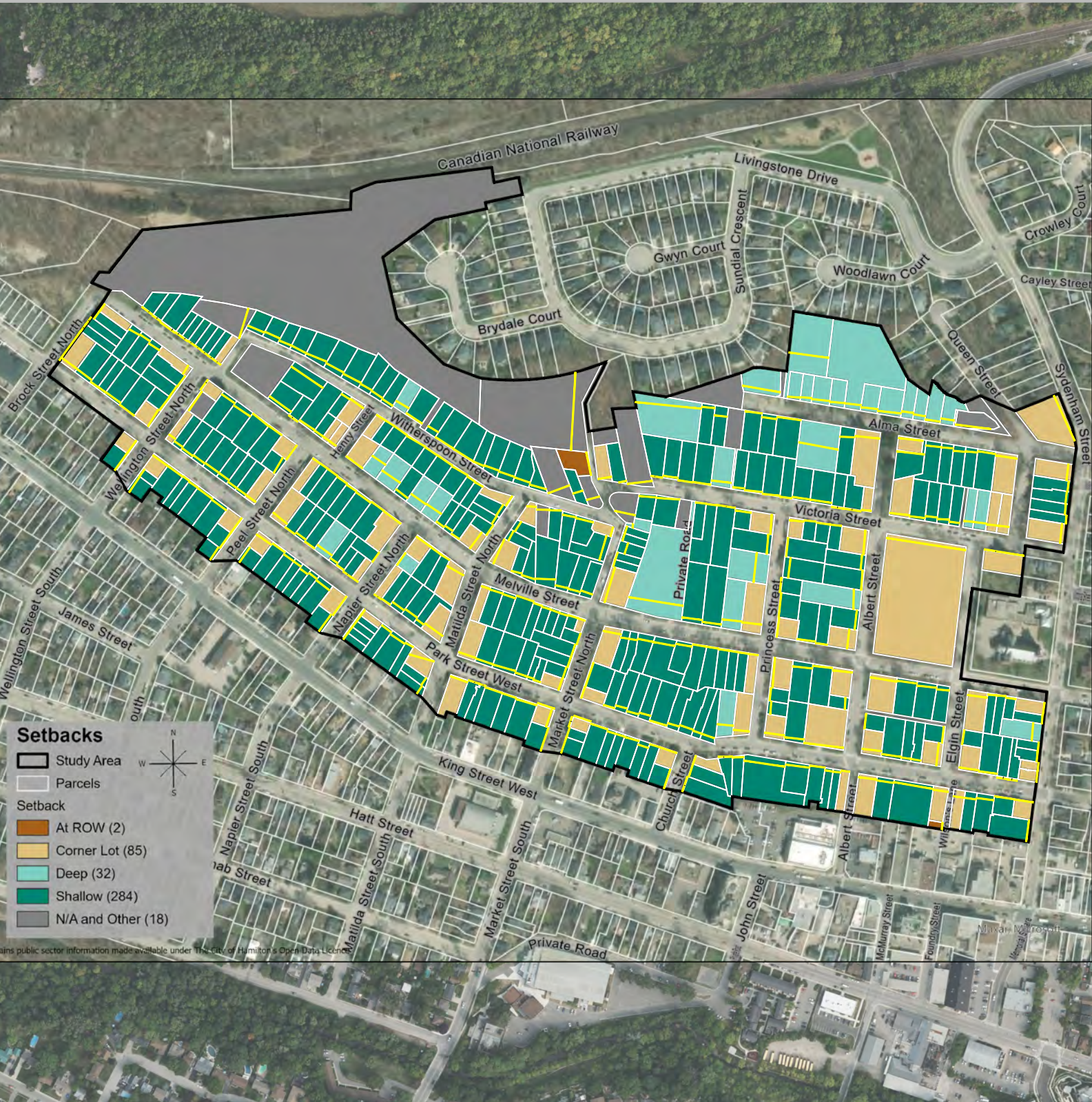
200-540 BINGEMANS CENTRE DRIVE, KITCHENER, ON, N2B 3X9 | P: 519.576.3650 | WWW.MHBCPLAN.COM

Figure 16 Property Setback Map



Melville Street
Dundas, ON
City of Hamilton

LEGEND

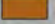

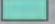

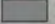
-  Study Area
-  Property Parcels
-  Building Setbacks



Setbacks

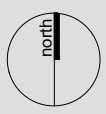
-  Study Area
-  Parcels

Setback

-  At ROW (2)
-  Corner Lot (85)
-  Deep (32)
-  Shallow (284)
-  N/A and Other (18)

Source: Contains public sector information made available under The City of Hamilton Open Data License; Aerial Photo retrieved from MAXAR (c) 2023

DATE:	May 4, 2023
SCALE:	n.t.s.
FILE:	0727AV
DRAWN:	LC and CCF




K:\0727AV-DUNDAS HERITAGE PROJECT\CAO\SETBACK_BASEDATA_04MAY2023.DWG

Figure 17

Infill - Non-contributing Properties


Melville Street Heritage Conservation District
Dundas
City of Hamilton, Ontario

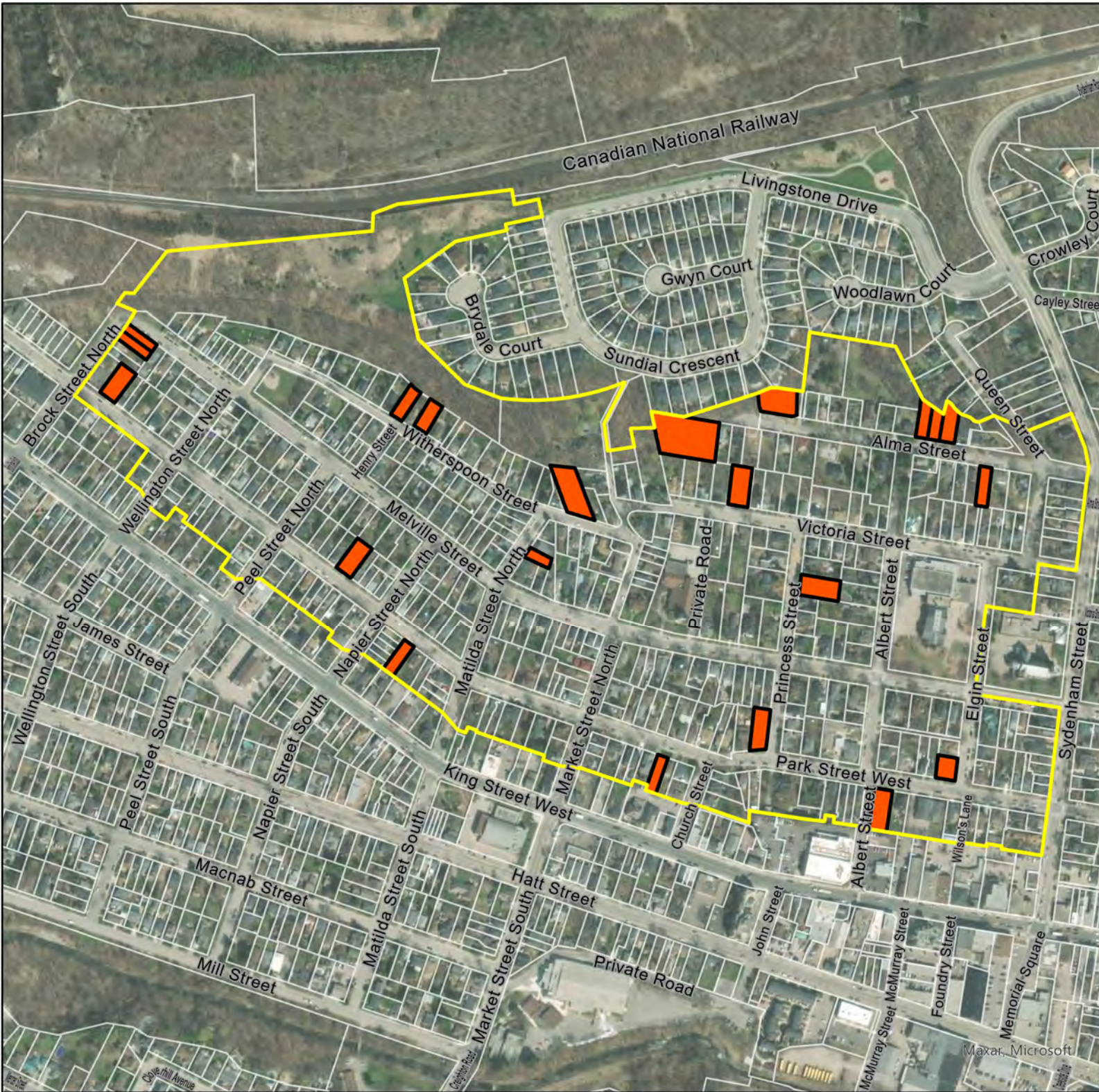
LEGEND

 Study Area

 Parcels

Infill based on Non-contributing Category

 Contemporary infill



Source: City of Hamilton Open Data (c) 2023,
Aerial from MAXAR (c) 2021

Date: 02 Oct 2023

File: 0727AV

Scale: 1:5,311

Drawn: CF



Document Path: K:\0727AV- Dundas Heritage Project\GIS\0727AV_MelvilleSt_HeritageInventory_v2.aprx

Figure 19 Landscape

Melville Street Heritage Conservation District
Dundas
City of Hamilton, Ontario

LEGEND

 Study Area

 Parcels

Trees (Diameter at Chest Height in cm)

-  1
-  5
-  10
-  50
-  100



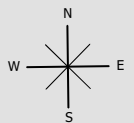
Source: City of Hamilton Open Data (c) 2023,
Aerial from MAXAR (c) 2021

Date: 29 May 2023

File: 0727AV

Scale: 1:5,500

Drawn: CF



Document Path: K:\0727AV- Dundas Heritage Project\GIS\0727AV_MelvilleSt_HeritageInventory_v2.aprx




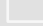



PLANNING
URBAN DESIGN
& LANDSCAPE
ARCHITECTURE

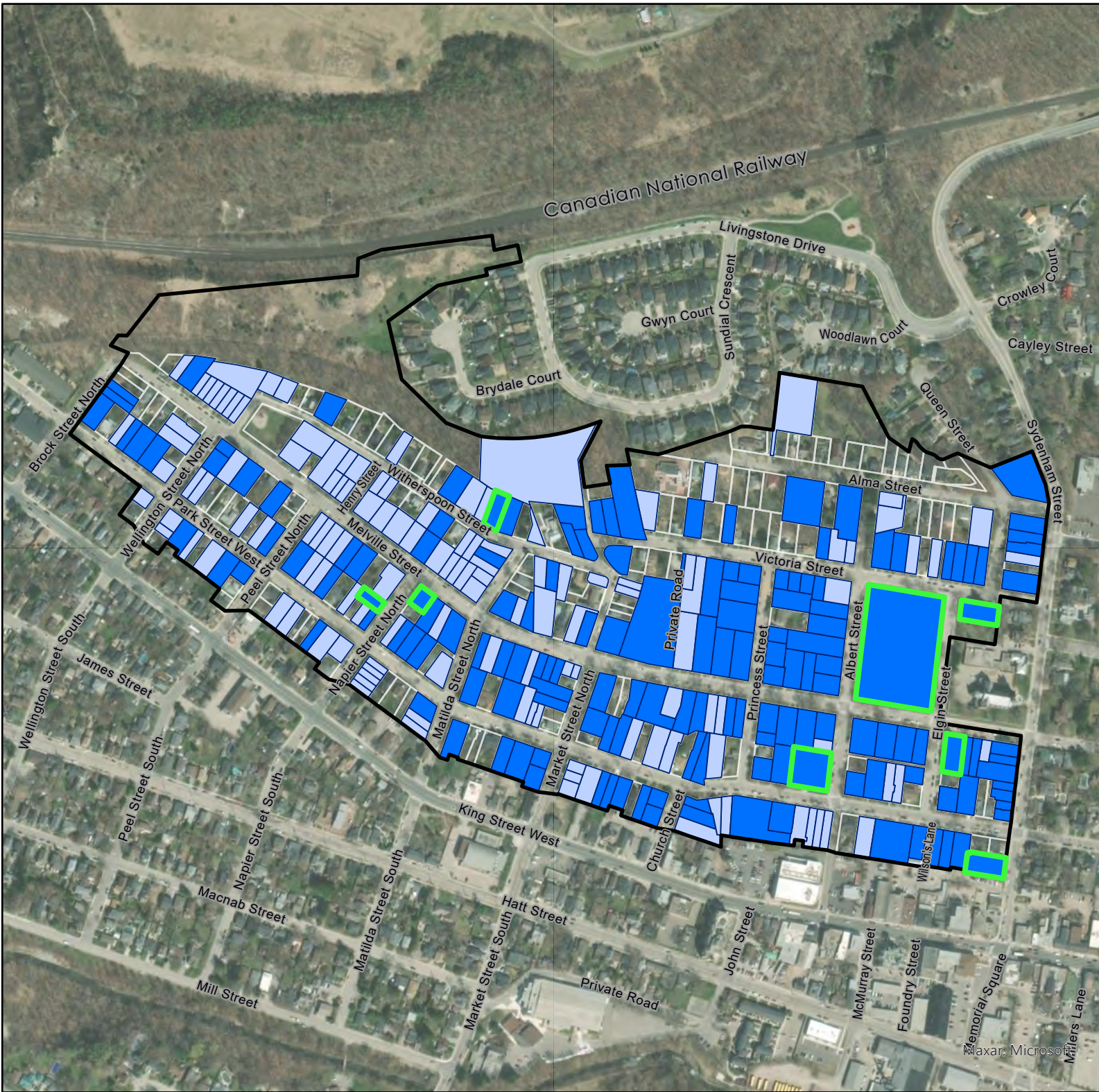
200-540 BINGEMANS CENTRE DRIVE, KITCHENER, ON, N2B 3X9 | P: 519.576.3650 | WWW.MHBCPLAN.COM

Figure 20
Contributing Properties

Melville Street Heritage Conservation District
 Dundas
 City of Hamilton, Ontario

LEGEND

-  Study Area
-  Parcels
-  Contributing A (161)
-  Contributing B (131)
- Heritage Status**
-  Designated (Part IV) (8)



Source: City of Hamilton Open Data (c) 2023,
 Aerial from MAXAR (c) 2021

Date: 25 Mar 2024
 File: 0727AV
 Scale: 1:5,500
 Drawn: CF



Document Path: K:\0727AV- Dundas Heritage Project\GIS\0727AV_MelvilleSt_HeritageInventory_v2.aprx

Figure 21 Proposed Heritage Conservation District Boundary

Melville Street Heritage Conservation District
Dundas
City of Hamilton, Ontario

LEGEND

Options

- Proposed Heritage Conservation District Boundary
- Study Area
- Parcels



Source: City of Hamilton Open Data (c) 2023,
Aerial from MAXAR (c) 2021

Date: 21 Sep 2023

File: 0727AV

Scale: 1:5,500

Drawn: CF



Document Path: K:\0727AV- Dundas Heritage Project\GIS\0727AV_MelvilleSt_HeritageInventory_v2.aprx