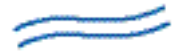


The Red Hill Valley Project / Map 1

LEGEND

Scale 1:5,000

Existing Creek



Relocated Creek



Grading



Cut Fill



Road



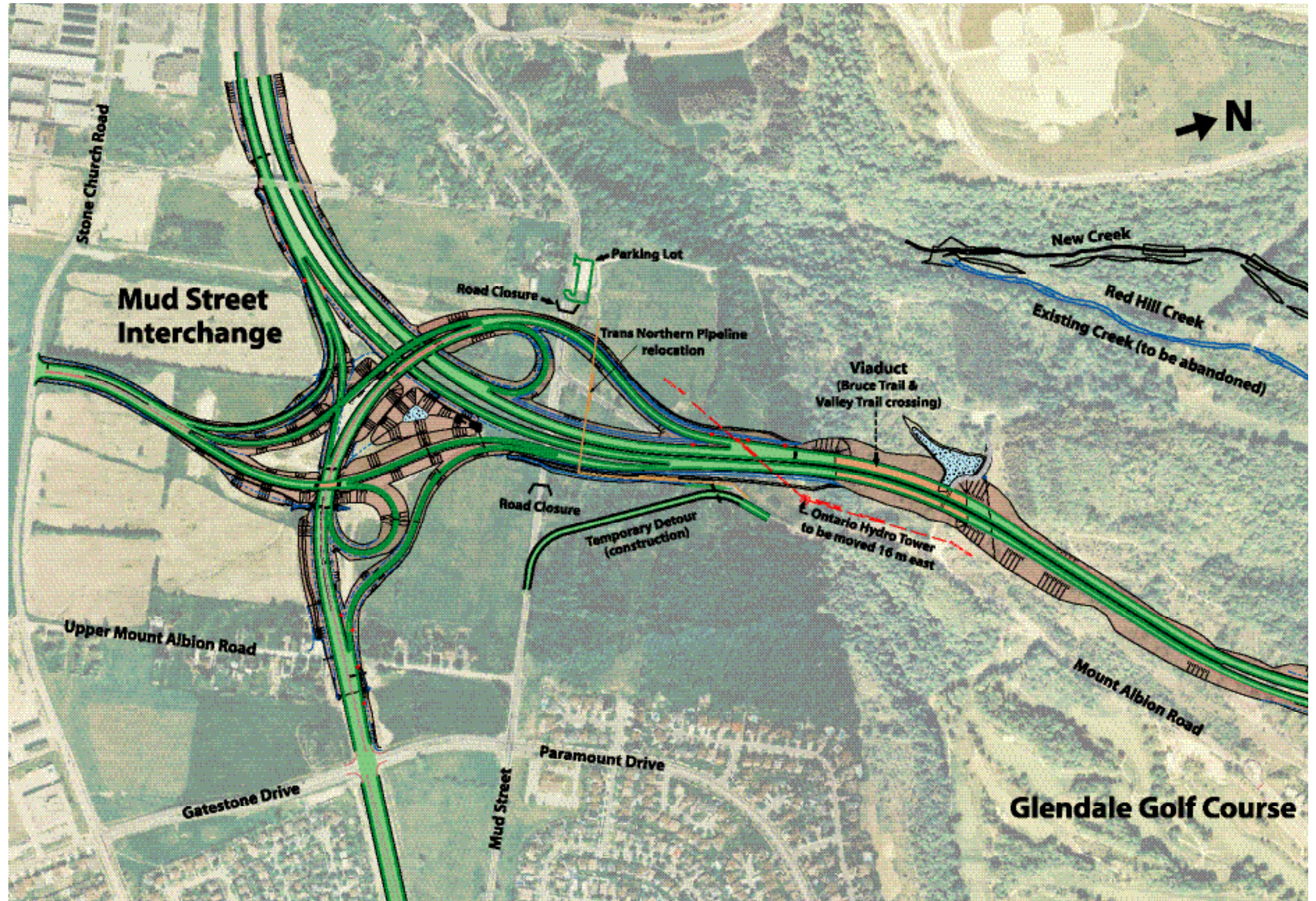
Storm Water Quality Pond



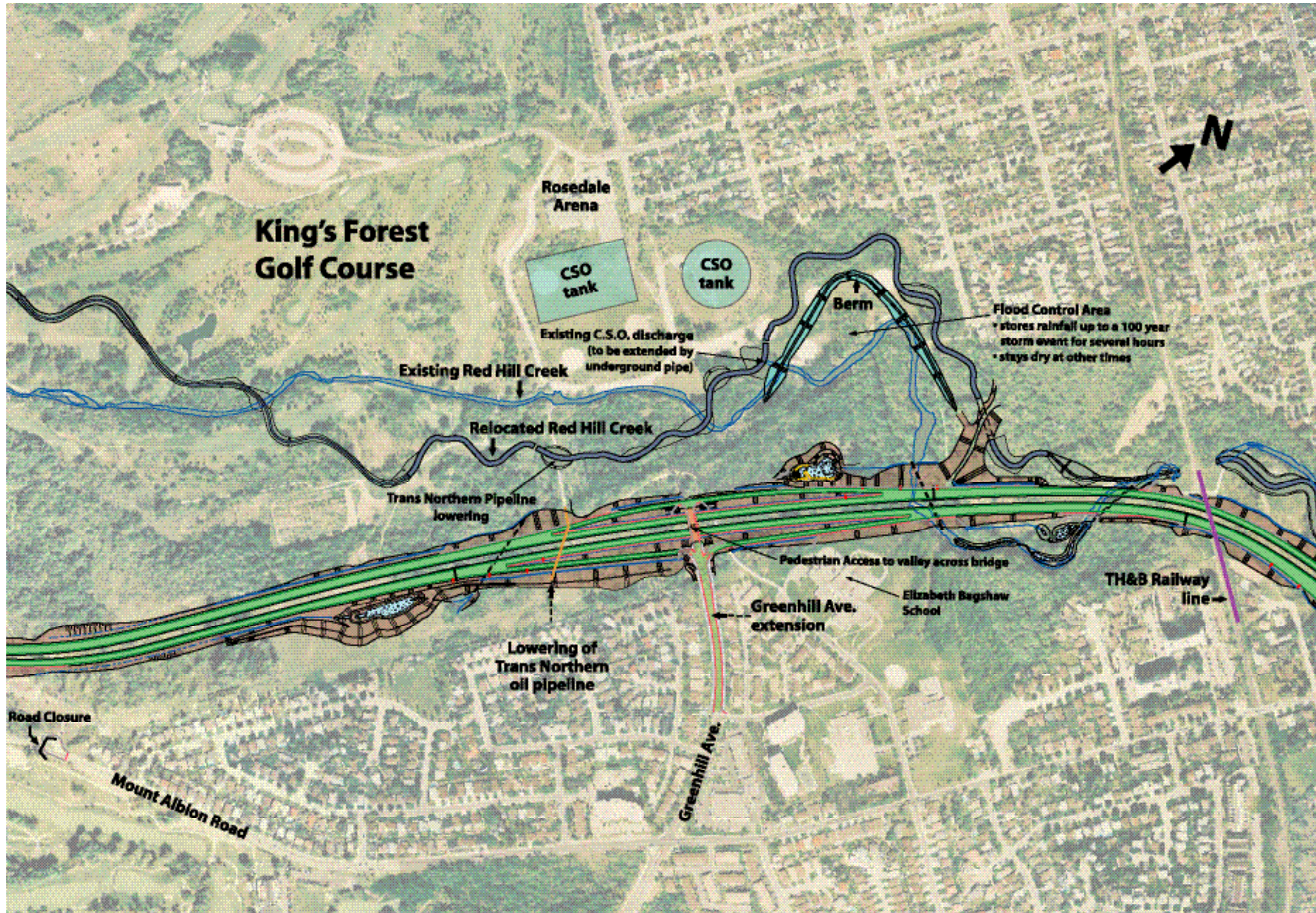
Combined Sewer Overflow Pipe (C.S.O)



Roadside Drainage Ditches



The Red Hill Valley Project / Map 2



3.6 The Red Hill Valley Project

- Expressway
- Red Hill Creek Natural Channel Realignment
- Stormwater Management Facilities
- Red Hill Combined Sewer Overflow Pipe

The Red Hill Valley Project / Map 3

LEGEND

Scale 1:5,000

Existing Creek



Relocated Creek



Grading



Cut Fill



Road



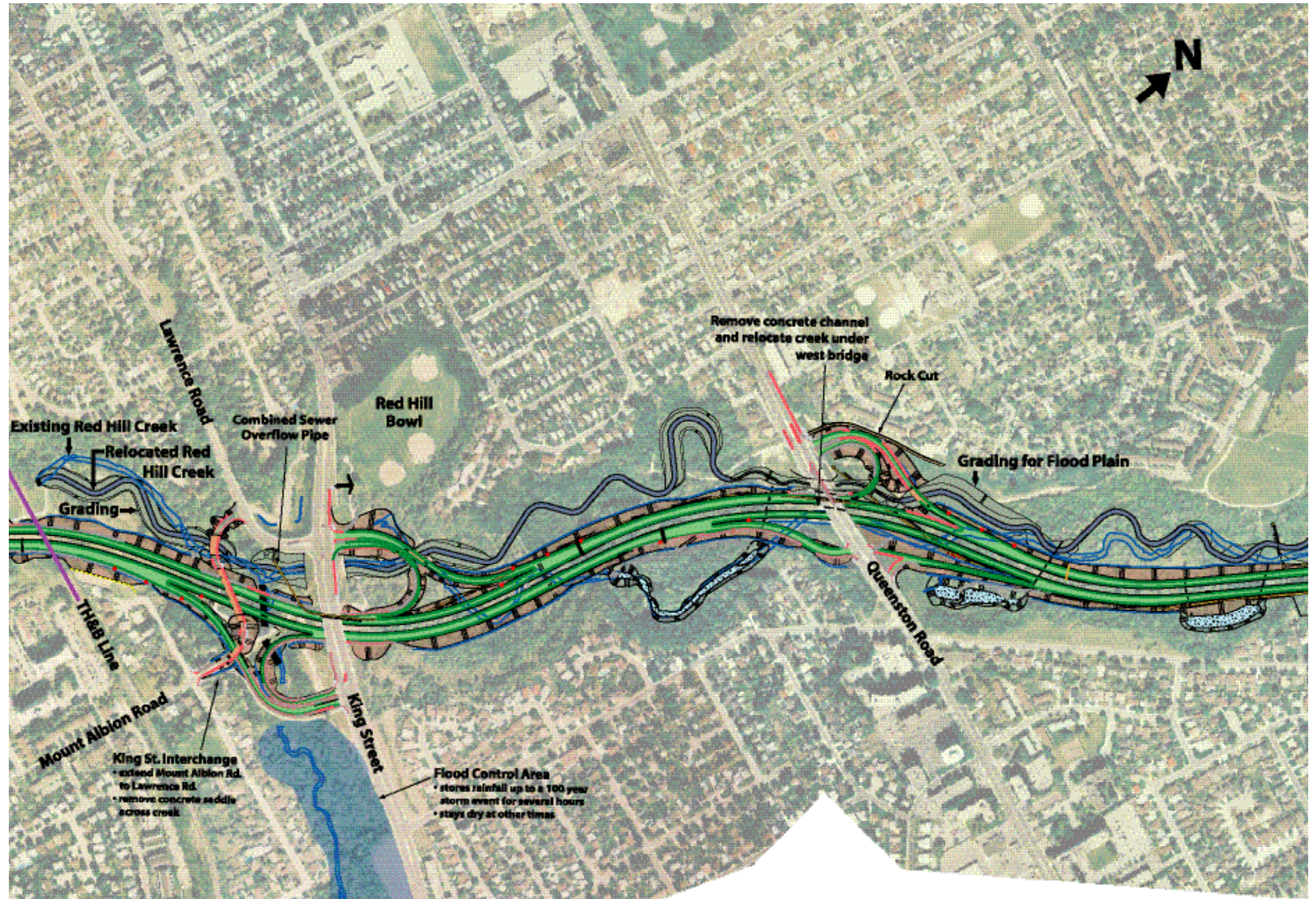
Storm Water Quality Pond



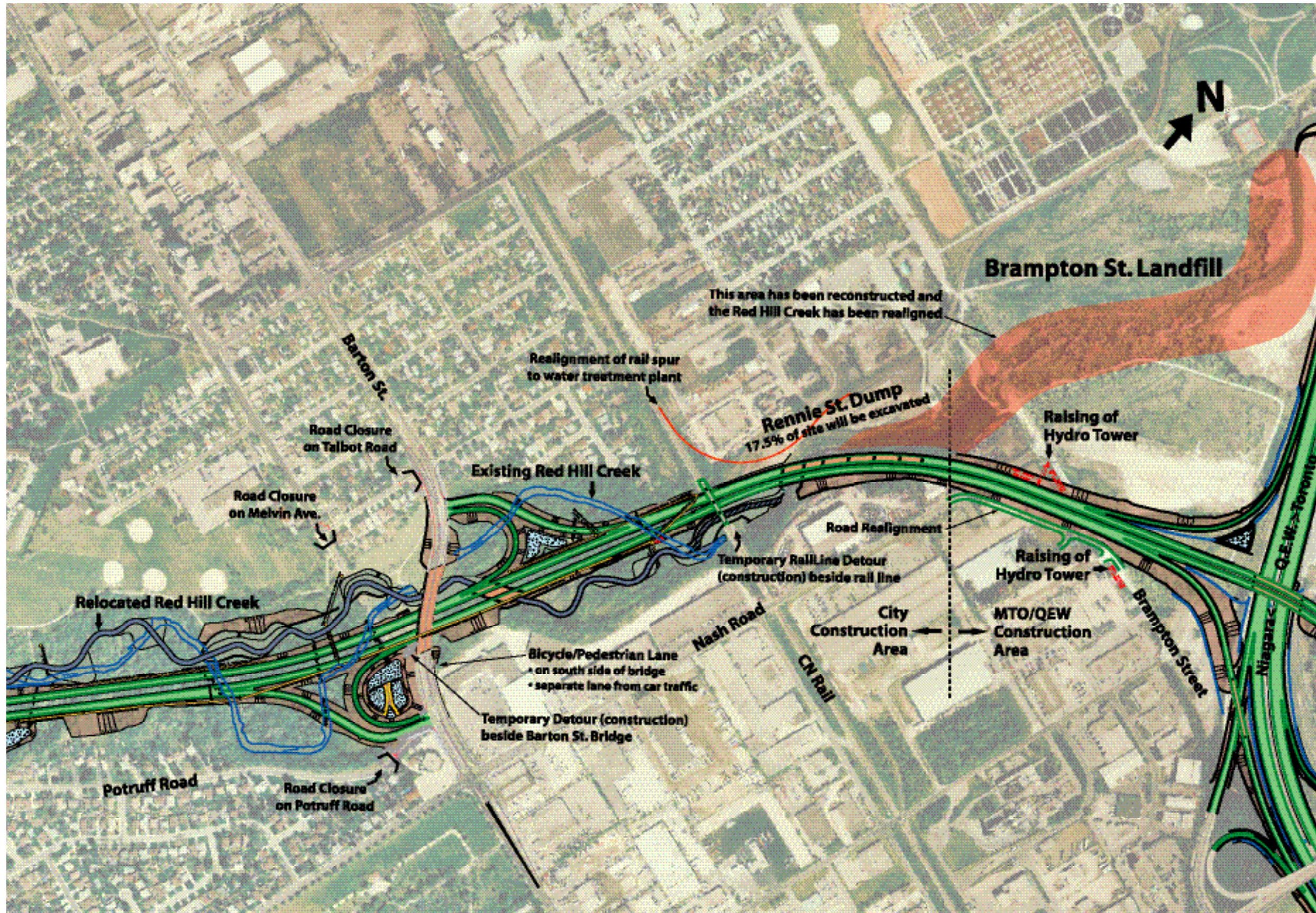
Combined Sewer Overflow Pipe (C.S.O)



Roadside Drainage Ditches



The Red Hill Valley Project / Map 4



3.6 The Red Hill Valley Project

Note:

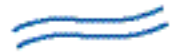
Rennie St./
Brampton St.
reconstruction
includes regrading
of the valley slopes,
installation of a
leachate collection
system at the
bottom of the slope
(west side)
and a realignment
of the creek.

The Red Hill Valley Project / Map 5

LEGEND

Scale 1:5,000

Existing Creek



Relocated Creek



Grading



Cut Fill



Road



Storm Water Quality Pond



Combined Sewer Overflow Pipe (C.S.O)



Roadside Drainage Ditches



The Red Hill Valley Project / Map 6



3.6 The Red Hill Valley Project