

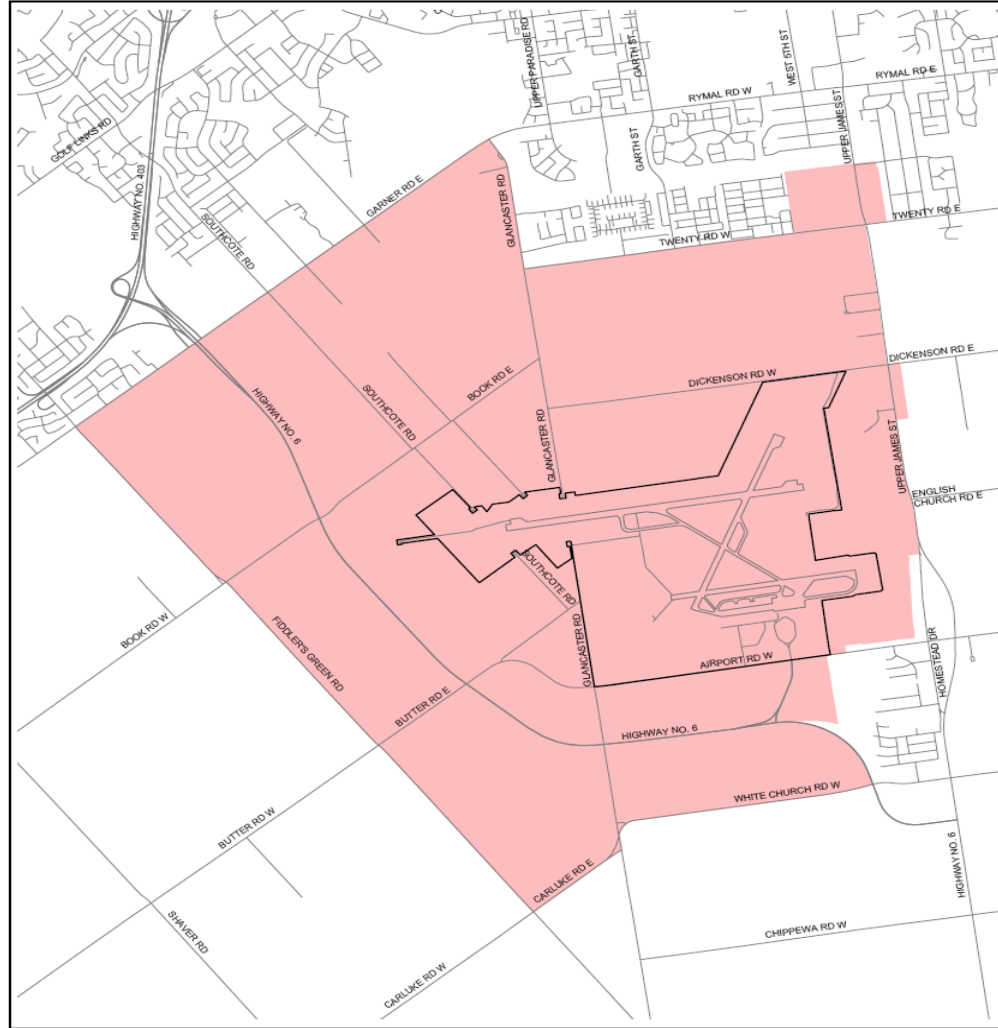


Hamilton

**Airport Employment Growth District  
Study Terms of Reference and  
Community Consultation**

May 22, 2007

# Study Area



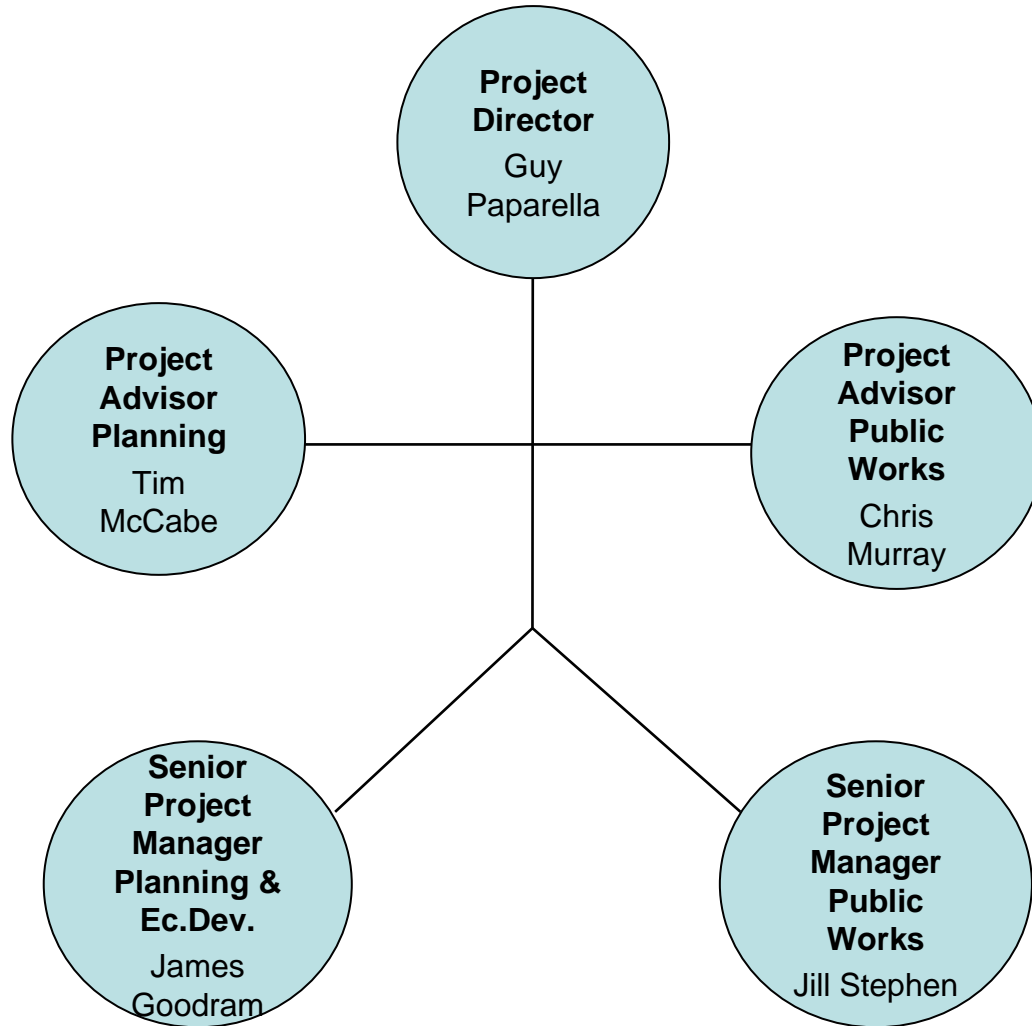
Hamilton

# Background

- Amendments to Official Plans – June 2005
- GRIDS
- Ontario Municipal Board Decision –  
September 2006



# Study Management



# Request for Proposal

- Study will follow a two – phase approach
- Phase 1 – Will result in a Scoping document so that a full understanding of opportunities, constraints and issues are identified.
- Phase 2 – Builds on the work of phase 1 and will result in a Land Use Plan and Master Plans for Transportation, Water/wastewater, Stormwater.



# Community Consultation

- Community Liaison Committee
- Dialogue with First Nations
- Consultation with other potentially affected parties
- Public Information Centres/Public Meetings
- City Web Site
- Community/Council Newsletters



[Hamilton](http://www.hamilton.ca)

# Community Liaison Committee

## **Mandate:**

Assist the consulting team in identifying issues, share information, comment on reports and presentations that will lead to the development of a secondary plan and servicing master plans for the Airport Employment Growth District.



Hamilton

# Community Liaison Committee

## **Draft membership of the CLC:**

- Elected officials from City Council
- First Nations Representation
- Community groups such as Environment Hamilton and the Chamber of Commerce
- Private Citizens
- a rep from Hamiltonians for Progressive Development, Tradeport International Corporation, Swisscan Properties Inc.



Hamilton

# Community Liaison Committee

## **Commitment:**

- Representatives are expected to attend monthly CLC meetings
- Representatives are expected to review any materials prior to the CLC meeting
- Representatives are expected to work constructively with other members, consultants and staff to move the project forward



# Community Liaison Committee

## Next Steps:

- Advertise for positions (ie. At your Service)
- Use the Selection Committee process established by Council
- Have a CLC meeting along with a professional facilitator to develop the Committee's Term of Reference and ensure that the CLC is representative
- Council will then be requested approve the Terms of Reference and final membership



# Timelines

<b>Milestone:</b>	<b>Date:</b>
Award of Contract – Phase 1	September 2007
First Public Information Centre	January 2008
Submission of Draft Phase 1 Report	May 2008
Submission of Final Phase 1 Report	June 2008
Project Completion (Phases 1 and 2)	September 2009



# Recommendations

- (a) That staff be authorized and directed to issue a Request for Proposal to engage the services of a consulting team to conduct Phase 1 of the Airport Employment Growth District Study per the attached Terms of Reference outlined in Appendix B of Report PED07153/PW07068.
  
- (b) That the General Managers of the Planning and Economic Development Department and the Public Works Department be authorized and directed to negotiate with the selected Phase 1 Consultant Team to continue with Phase 2 of the Study provided that performance expectations for Phase 1 are met or exceeded and costs are reflective of the expected work.



# Recommendations

- (c) That staff be authorized and directed to establish a Community Liaison Committee that will provide input to the Airport Employment Growth District Study throughout Phases 1 and 2 and report back to Committee of the Whole for their approval.
- (d) That decisions regarding the Airport Employment Growth District Study be presented and decided at special Committee of the Whole meetings for the duration of the project.



# Questions?



Hamilton