

4.0 THE PEOPLE OF HAMILTON

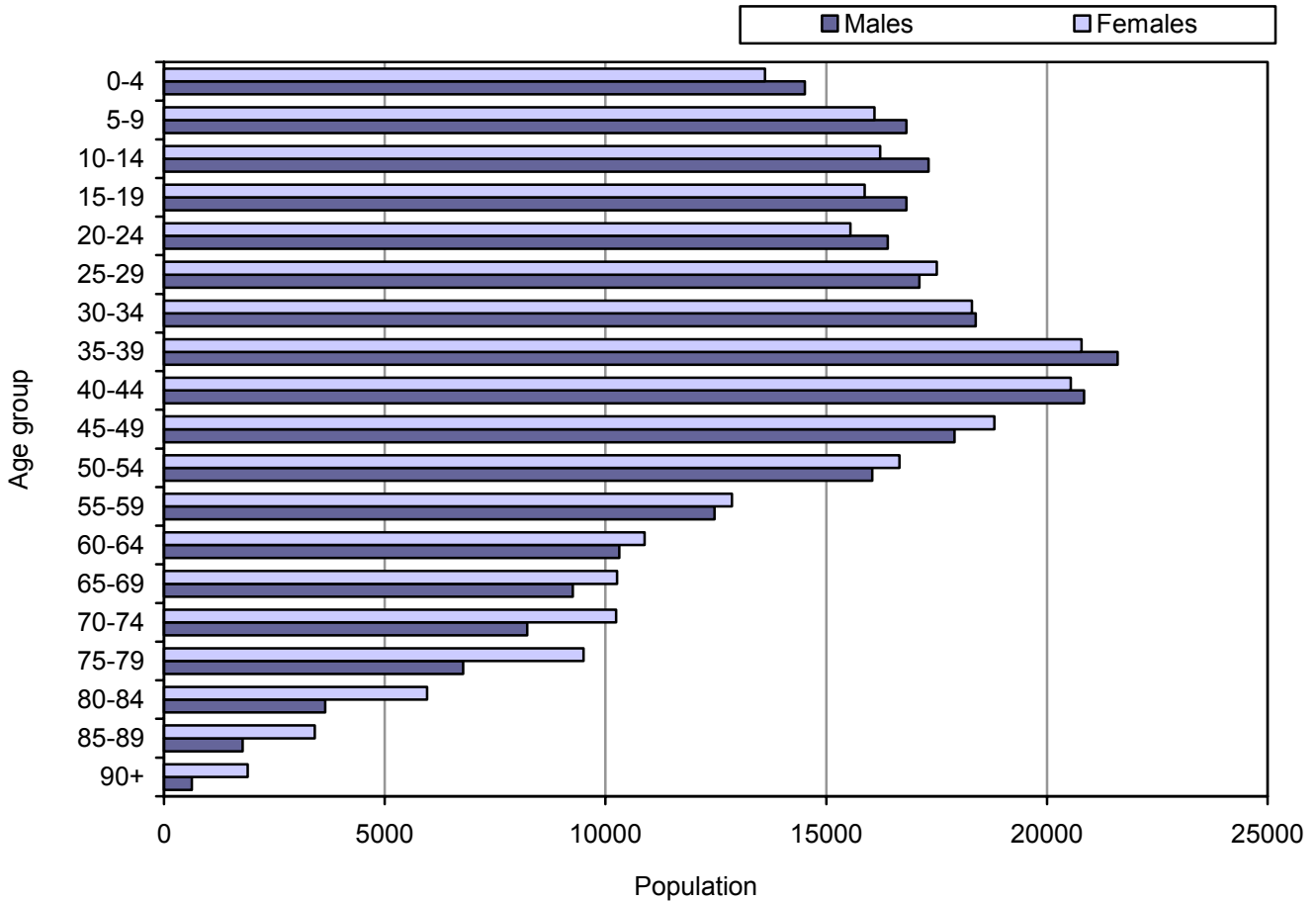
This section provides an overview of the demographic make-up of the population in the City of Hamilton. It starts with the basic population structure, both current and projected. It then provides information on the cultural diversity of the City of Hamilton's population and on family structure.



POPULATION BY AGE & GENDER

- Description:** ▪ Population distribution by age group and gender.
- Key Message:** ▪ The high population level in the 35 to 44 years age group is a combination of the 'baby boom' and increased immigration among this cohort that started in the late 1980's.
- There are significantly more females age 65 years and older than males in the City of Hamilton.

Population by age group and gender, City of Hamilton, 2001



Source: Statistics Canada, Census 2001



POPULATION PROJECTIONS

Description:

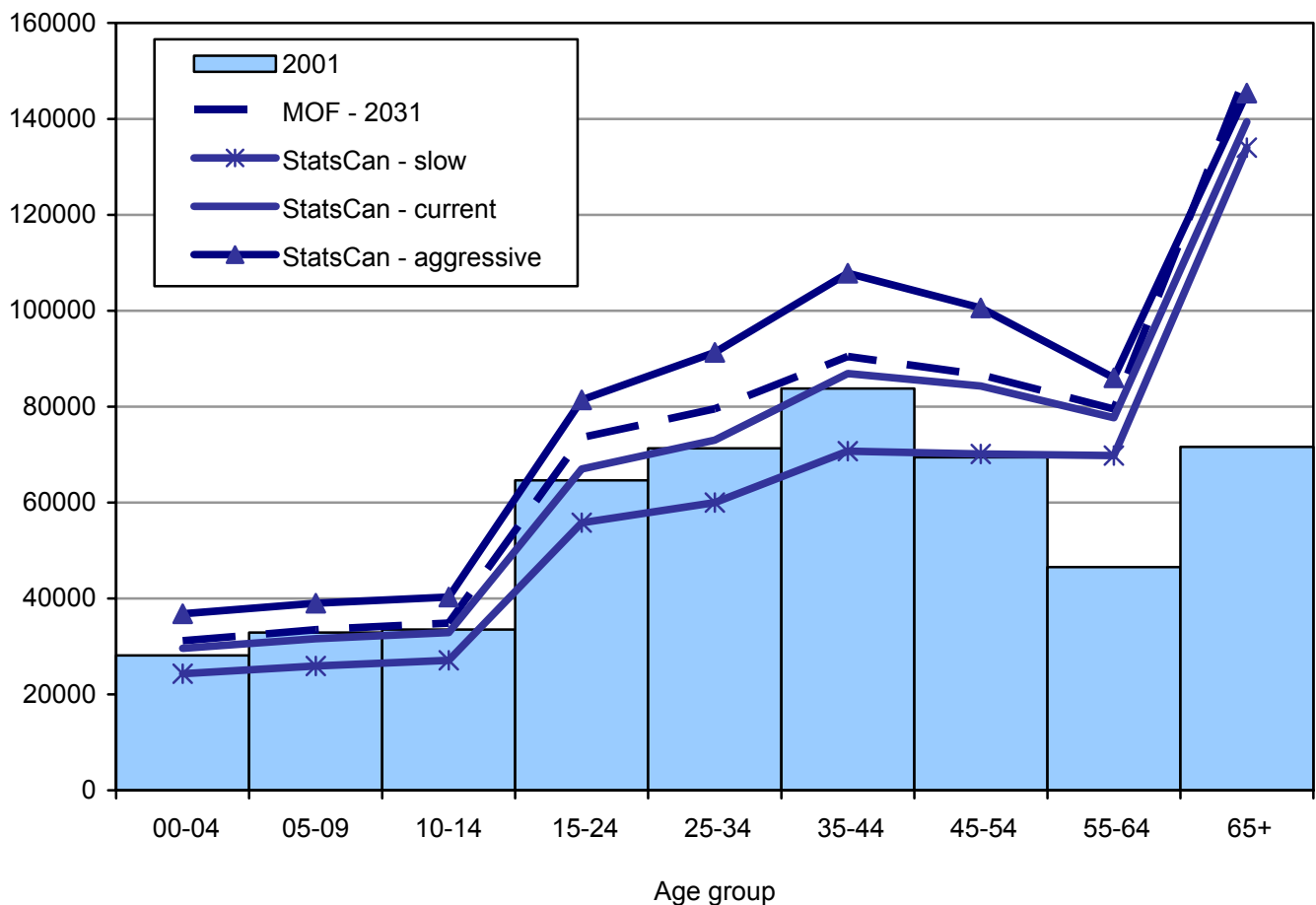
- Population composition by age group for 2001 and population projections by age group for the year 2031 as per the Ministry of Finance projections compared to Statistics Canada & The Centre for Spatial Economics' projections based on slow, current and aggressive growth scenarios as cited in the City of Hamilton's Growth Related Integrated Development Strategy (GRIDS).
- Population projections can assist in long-term planning and allocation of resources.

Key Message:

- The four different population projections all convey the same message that in the City of Hamilton in 2031, there will be a comparatively smaller proportion of children and youth aged 0 to 14 years and a comparatively larger proportion of the older population age 65 years and older.

Population by age group 2001, Population projections by age group 2031 (Ministry of Finance projections vs. Statistics Canada's slow, current and aggressive population growth scenarios), City of Hamilton

Population



Source: 2001 Population - Statistics Canada, Census 2001; Population Projections for 2031- Statistics Canada & The Centre for Spatial Economics and Ontario Ministry of Finance.



DEPENDENCY RATIO

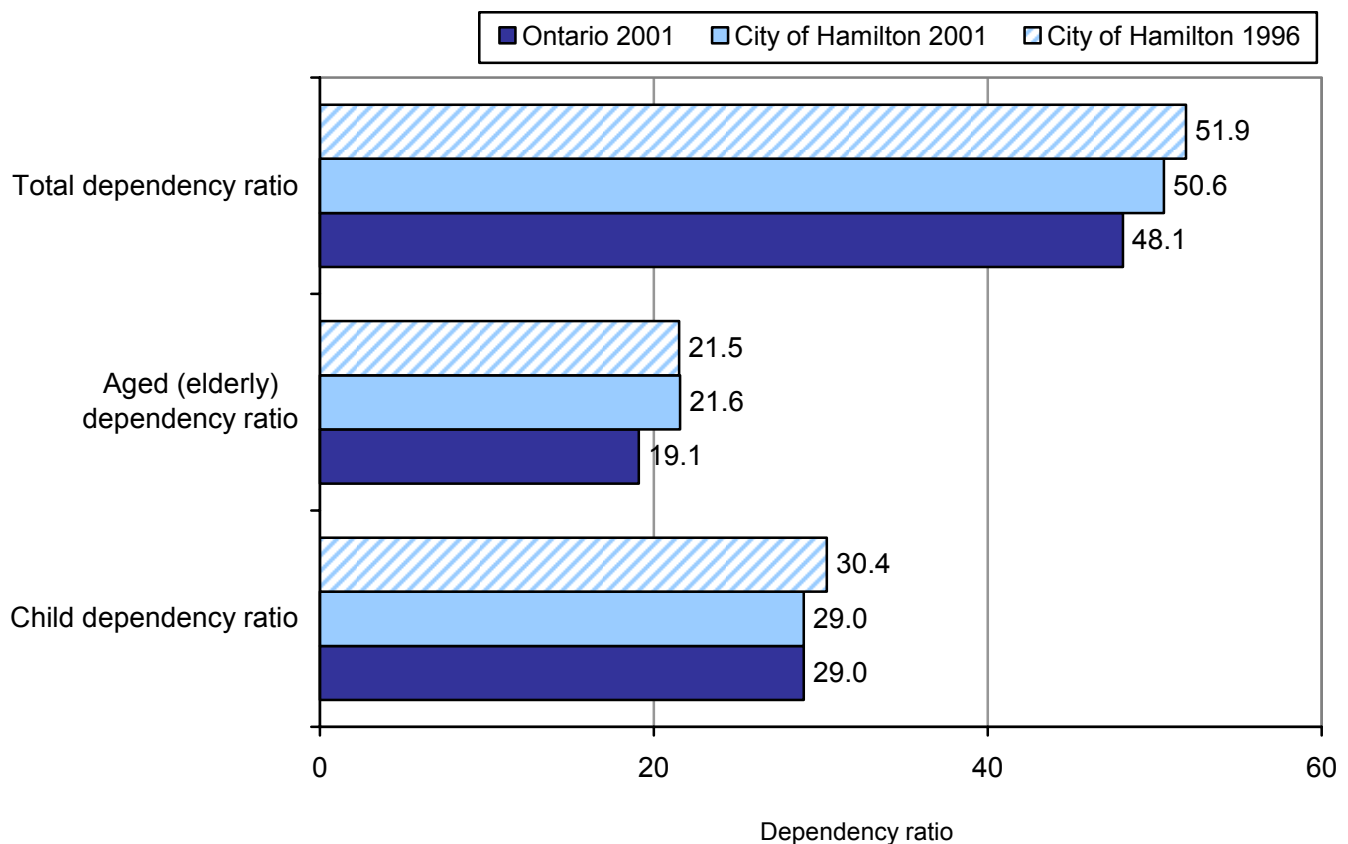
Description:

- A dependency ratio is a comparison of the populations considered dependent (children aged 0 to 14 years and the elderly aged 65 years and over) to the population of working age (aged 15 to 64 years).
- Presented as the number of dependents for every 100 people in the working age population.
- Dependency ratios are indicators of areas that are economically stressed due to the higher number of people who are likely economically dependent relative to those who are likely to be earning a wage.

Key Message:

- For every 100 working adults in the City of Hamilton in 2001, there were 29 child dependents and 22 elderly dependents, for a combined ratio of approximately 1 dependant for every 2 working adults.
- Since 1996, the City of Hamilton's child dependency ratio has decreased, but its aged dependency ratio has remained constant.
- The City of Hamilton's aged dependency ratio is slightly higher than the provincial average. The elderly dependency ratio will likely increase, as baby boomers enter retirement age.

Total, aged (elderly) and child dependency ratio, City of Hamilton 1996 and 2001, Ontario, 2001



Source: Statistics Canada, Census 1996 and 2001

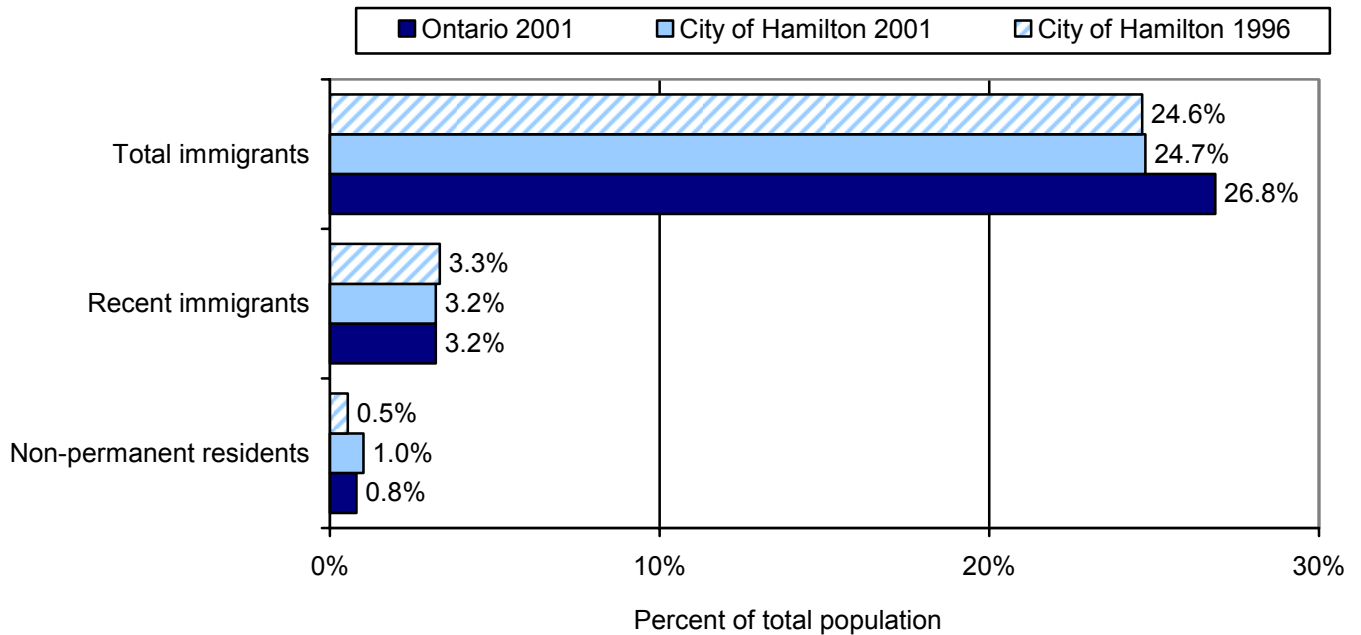


IMMIGRANTS

- Description:**
- Total immigrants refer to the percentage of people who are, or have been, landed immigrants in Canada.
 - Recent immigrants are landed immigrants who have come to Canada in the 5 years preceding the Census day.
 - Non-permanent residents refer to people from another country who had an employment authorization, a student authorization, a Minister's permit, or who were refugee claimants at the time of the census and the family members living with them.
 - Immigrants usually have health and social needs that are different from non-immigrants.

- Key Message:**
- A quarter of the City of Hamilton's population are immigrants or are foreign-born. This is a slightly smaller proportion than that for Ontario (24.7% vs. 26.8%).
 - The percentages of recent immigrants and non-permanent residents in the City of Hamilton population are consistent with the provincial percentages.
 - The proportion of non-permanent residents increased in 2001 over the 1996 proportion.

Total and recent immigrants, non-permanent residents, City of Hamilton 1996 and 2001, Ontario 2001



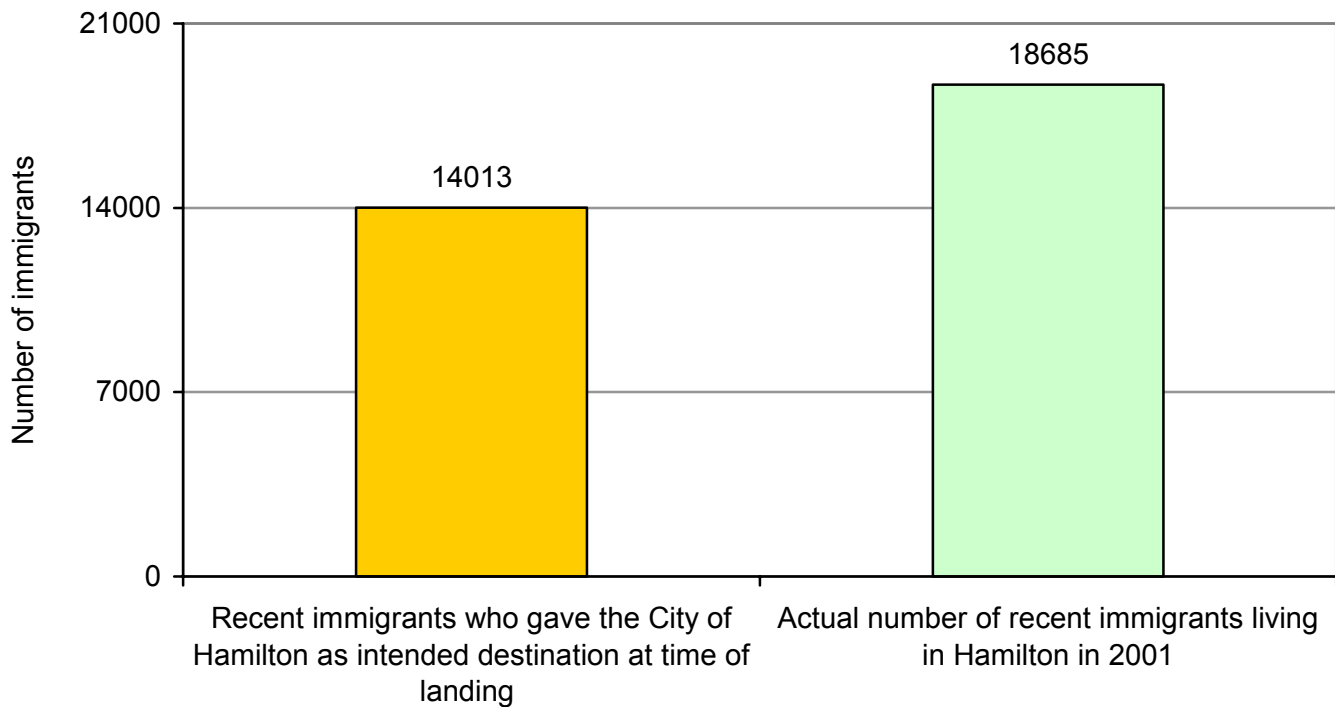
Source: Statistics Canada, Census 1996 and 2001



SECONDARY IMMIGRANTS

- Description:**
- Recent Immigrants who gave the City of Hamilton as their intended destination compared to the actual number of recent immigrants living in the City of Hamilton in 2001.
 - Recent immigrants refer to those who have immigrated during the last 5 years before the census (1996 to 2001).
 - Secondary immigration is when an immigrant moves from the original intended destination place they declared at the time of landing to another destination in Canada.
 - This differs from primary immigration which is when an immigrant arrives and lands into the place of intended destination in Canada directly from a country outside of Canada.
 - Information collected in the Census, only pertains to primary immigration and not to secondary immigration.
- Key Message:**
- There were 14013 recent immigrants to Canada who had declared the City of Hamilton as their intended destination when landing.
 - In 2001, the actual number of recent immigrants living in the City of Hamilton was 18685. This is approximately 133% of recent immigrants that had declared the City of Hamilton as their intended destination when landing and highlights the issue of secondary immigration in the City of Hamilton.

Immigrants who landed between 1991 and 2001 and gave the City of Hamilton as their intended destination compared to the actual number of immigrants who landed between 1991 and 2001 living in the City of Hamilton in 2001



Source: Canadian Labour and Business Centre, Citizenship and Immigration Canada data, Statistics Canada, Census Data

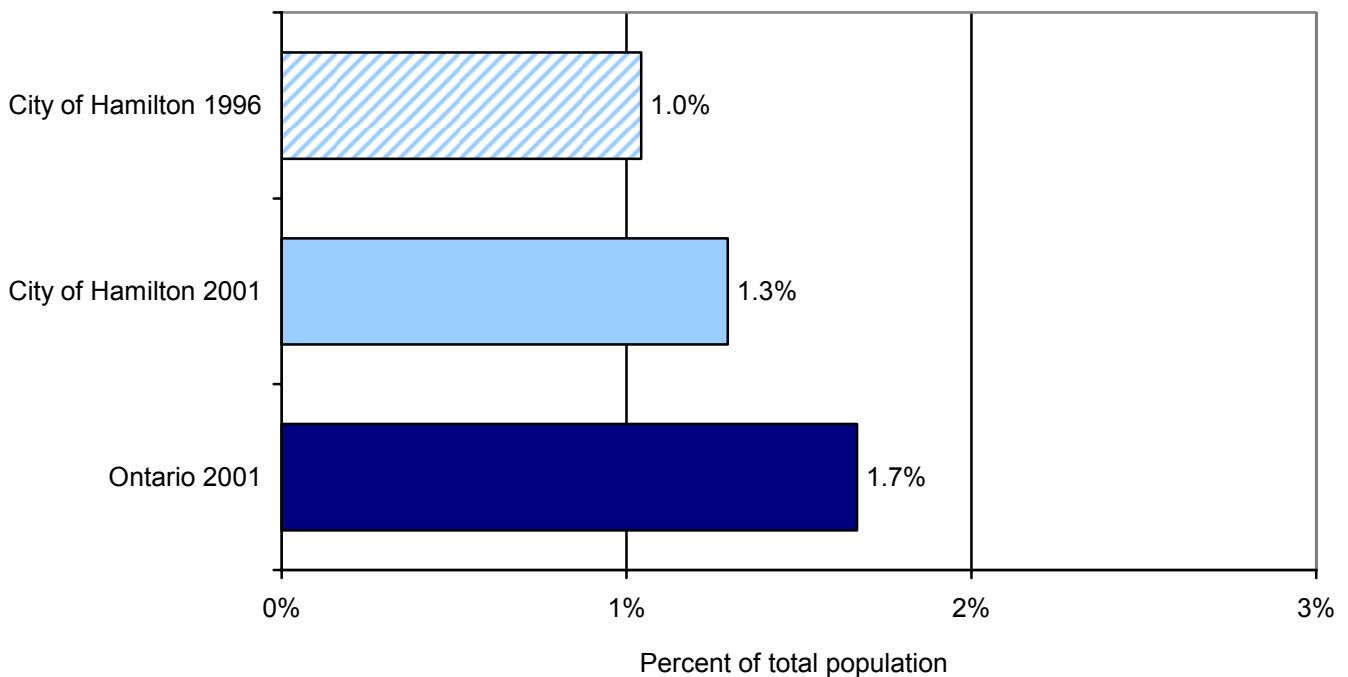


ABORIGINALS

- Description:**
- Aboriginal People are those persons who identified themselves with at least one Aboriginal group and/or those who reported being a Treaty Indian or a Registered Indian as defined by the Indian Act and/or those who were members of an Indian Band or First Nation.
 - Aboriginal persons usually have health and social needs that are different from non-aboriginal persons.

- Key Message:**
- A very small proportion (1.3%) of the City of Hamilton population report 'aboriginal self-identity'.
 - This has not changed significantly since 1996, and is comparable to the provincial proportion.

Aboriginal population, City of Hamilton 1996 and 2001, Ontario, 2001



Source: Statistics Canada, Census 1996 and 2001

- Limitations:**
- Aboriginal persons are under-represented on the Census. This is because the Census does not survey persons living on reservations, and the reservation is usually reported as their primary place of residence. This is despite the fact that the aboriginal population is relatively mobile and many aboriginal persons spend significant amounts of time living in the City of Hamilton. (Source: Key informant meeting with local aboriginal community workers, March 2004).



HOME LANGUAGE

- Description:**
- The top ten languages spoken at home by the population of the City of Hamilton.
 - Reflects the ethnic and cultural diversity in the community and is useful for addressing language-based barriers to services.

- Key Message:**
- A large majority of the City of Hamilton population speak English at home at least some of the time. This proportion is slightly higher than the provincial proportion, and significantly higher than the national proportion.
 - The next three most frequently reported languages spoken at home in the City of Hamilton are Italian, Polish and French.

Top ten languages spoken at home, City of Hamilton and corresponding Ontario proportions, 2001

	City of Hamilton	Ontario
English	91.5%	89.4%
Italian	3.3%	2.0%
Polish	1.6%	1.0%
French	1.5%	4.6%
Portuguese	1.4%	1.2%
Chinese	1.3%	3.6%
Serbian	1.0%	0.3%
Croatian	1.0%	0.3%
Arabic	1.0%	0.8%
Spanish	0.9%	1.1%

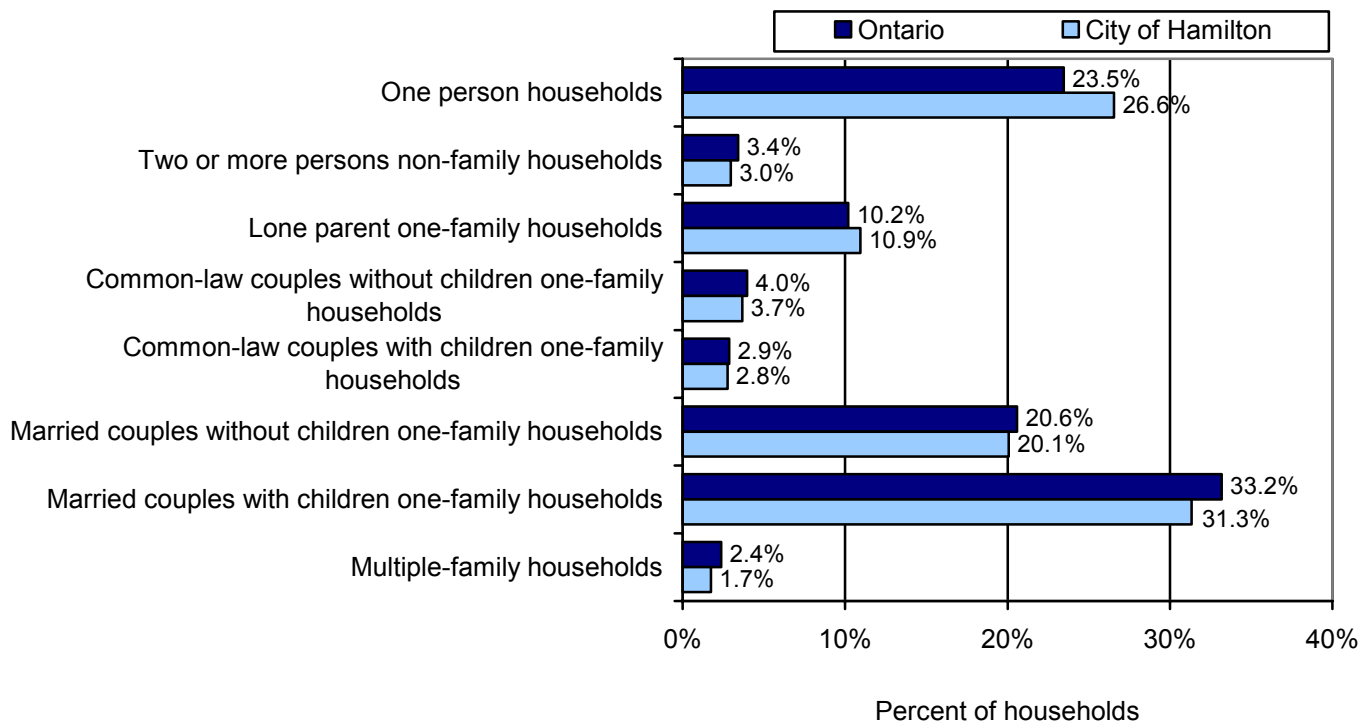
Source: Statistics Canada, Census 2001



FAMILY STRUCTURE

- Description:**
- Person or a group of persons who occupy the same private dwelling, by household type (one-family household, multiple-family household, or non-family households), expressed as percentage of all households.
 - One-family household refers to a single census family with or without other non-family persons including: married couples with or without children, couples living common-law with or without children, or lone parents living with one or more children.
 - Multiple-family household refers to households with two or more census families (with or without additional non-family persons).
 - Non-family household refers to either one person living alone or to a group of two or more people who share a private dwelling, but who do not constitute a census family
- Key Message:**
- Over half of households in the City of Hamilton are married couple one-family households with or without children, and greater than thirty percent of the City of Hamilton households are made up of married couples with children.
 - A quarter of the City of Hamilton households are comprised of one person living alone.
 - The breakdown of household types in the City of Hamilton is similar to that of Ontario with a few exceptions. When compared to Ontario, a smaller percentage of the City of Hamilton households consist of married couples with children, and a higher percentage of households consist of single persons living alone. The City of Hamilton also has a higher percentage of lone-parent households.

Private households by household type, City of Hamilton and Ontario, 2001



Source: Statistics Canada, Census 2001

