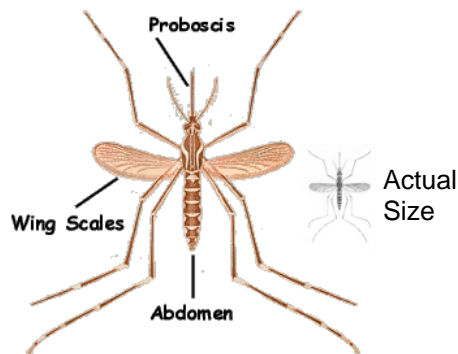


Mosquitoes and Mosquito-like insects

Typical Mosquito

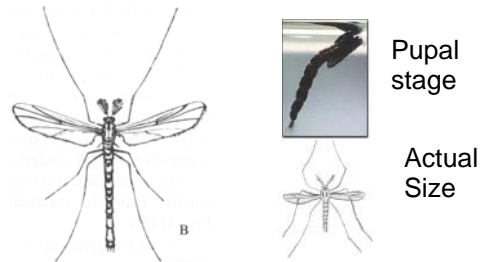


The key difference between mosquitoes and non biting mosquito look-alikes is the mouthparts.

Mosquitoes:

1. Bite using proboscis
2. Wings are same length as body
3. Breed in standing water
4. May carry diseases such as West Nile Virus

Midges



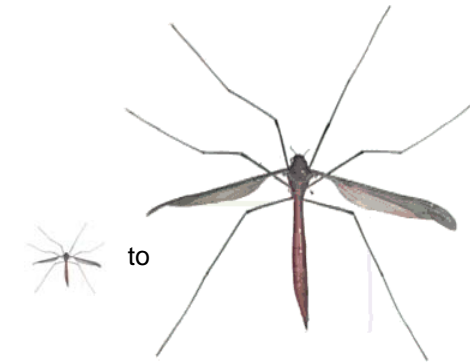
Midges resemble mosquitoes but do not bite. Although this insect may cause an annoyance when they occur in large numbers, they are not a public health problem and do not transmit diseases. Larvae develop in the mud at the bottom of ponds, lakes, and lagoons. Adult midges live about one week and usually appear during the months of April through September. Unusually large amounts of rain and increased air temperatures can accelerate the growth of midges.

Adult midges are attracted to light and will readily enter homes through open doors and windows at night time. During the day, adults may be observed resting on walls, fences and porches. When in flight they may be observed in "swarms" or "clouds".

Midges:

1. **Cannot bite** (no proboscis) or carry disease
2. Wings are shorter than body
3. Larvae develop in mud
4. Pupae can be seen at the surface of water

Crane Flies



Actual sizes. **Can be small to large**

Crane flies resemble large mosquitoes but do not bite. These insects are sometimes called mosquito hawks or mosquito eaters. In reality, the adults of this group feed on nectar or do not feed at all.

Crane flies lay their eggs in water or damp soil. The larvae feed on decaying plants, dead leaves, fungi, or roots of plants. Large numbers of adult crane flies emerge together. Males form swarms around treetops seeking females to mate with.

Crane flies:

1. **Cannot bite** or carry diseases
2. Wings are longer than the body
3. Develop in soil or water
4. Usually larger than mosquitoes