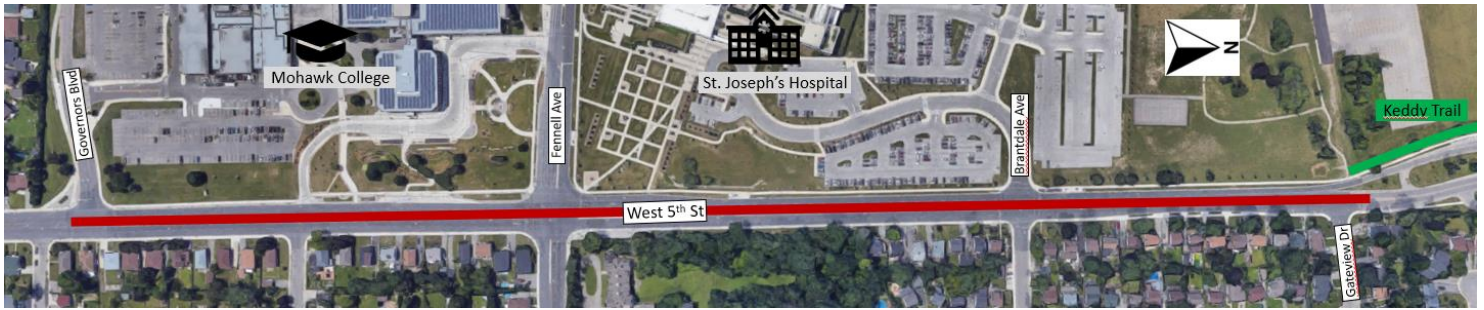


### Project Details

Project Boundary:	Gateview Dr to Governor's Blvd (Keddy Trail to Mohawk College)	Funding Source:	ICIP - AT Connections
Phase:	Design (consultant)	Project Length:	850m
Project #/ CMP #:	21-004/ 13 & 79	Ward:	8

### Key Map



### Description

Construct a two-way bicycle path along the west side of West 5th St behind the existing sidewalk; to connect the existing Keddy Trail to existing bicycle sharrow on West 5th St at the south edge of Mohawk College Campus. The project includes modifications at 3 signals.

### Precedent Images and Visualizations



Cootes Dr, Hamilton  
Multi-use path

Stone Church Rd, Hamilton  
Multi-use path



Governor's Rd, Hamilton  
Bicycle path



### Potential Impacts

HSR Route/Area	Impacts
20 - A Line Express	Minimal impacts at access to terminal (new crossing)
21 - Upper Kenilworth	
33 - Sanatorium	
35 - College	

### Parking Review

Parking Review	Impacts
Hospital parking lot	Approximately 3 stalls to be removed
On-street parking	There is no on-street parking along corridor

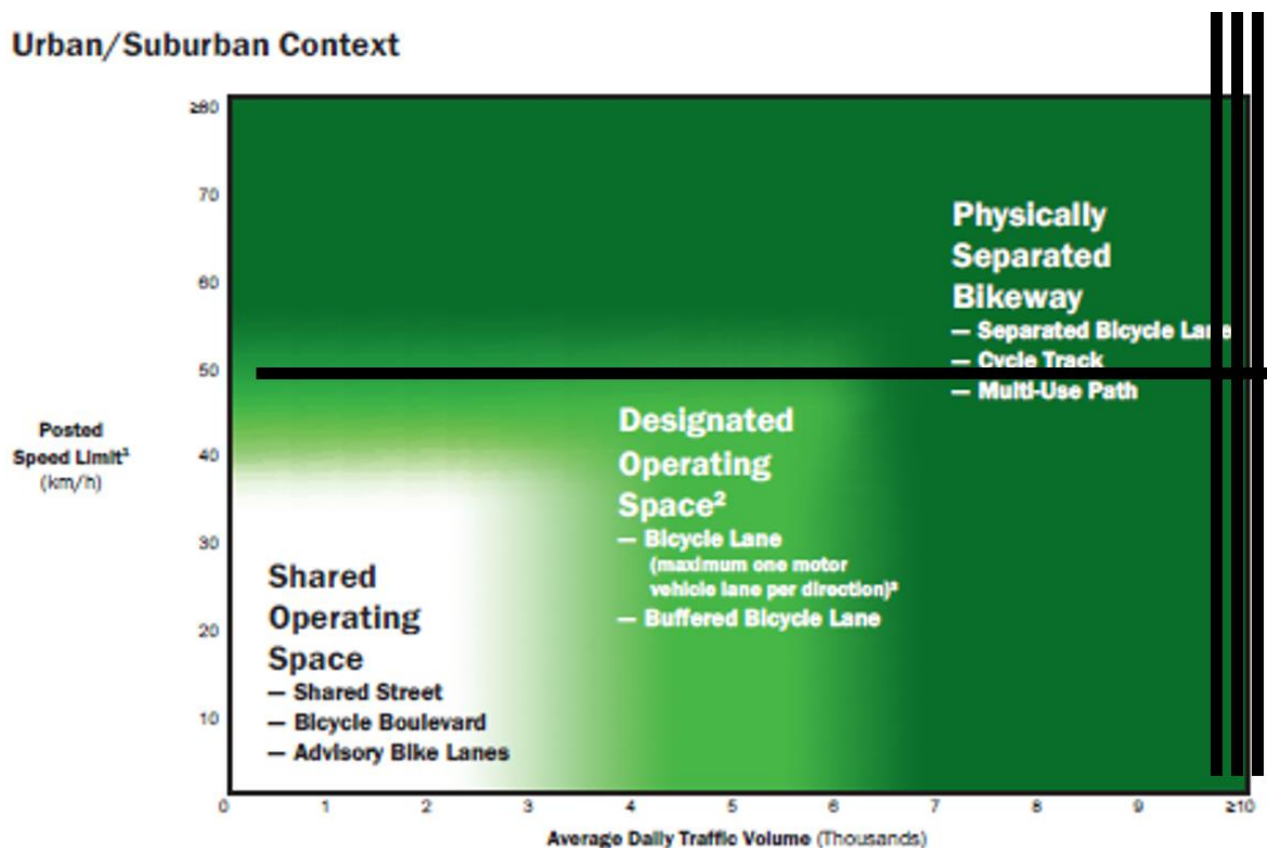
### Rationale

The newly-constructed Keddy Trail allows safe and direct cycling and pedestrian travel from downtown to the top of the escarpment. This West 5th bicycle path will allow cyclists to connect from the top of the Keddy across to Mohawk College, St Joseph's Hospital, and existing lanes south of West 5th and Governors.

According to the cycling facilities nomograph (OTM Book 18) and the complete streets audit tool, this arterial street should have a designated cycling operating space, which will be constructed as a bicycle path behind the sidewalk.

### Cycling Facilities Nomograph Alignment (OTM Book 18)

#### Urban/Suburban Context



## Strategic Alignment

### Capital Plan

There are no plans for any roadworks along the corridor as the street was recently rehabilitated.

### Transportation Master Plan

Action 15 - As part of the implementation of the cycling network, undertake an evaluation of Alternatives in order to select routes which maximize safety for cyclists and promote continuity of the network across the City

### Sustainable Mobility KPI's and Cycling Master Plan

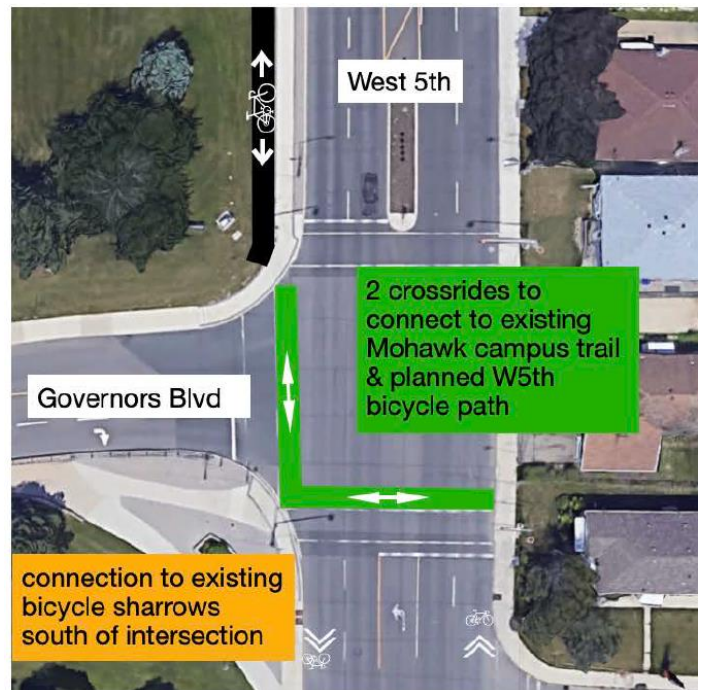
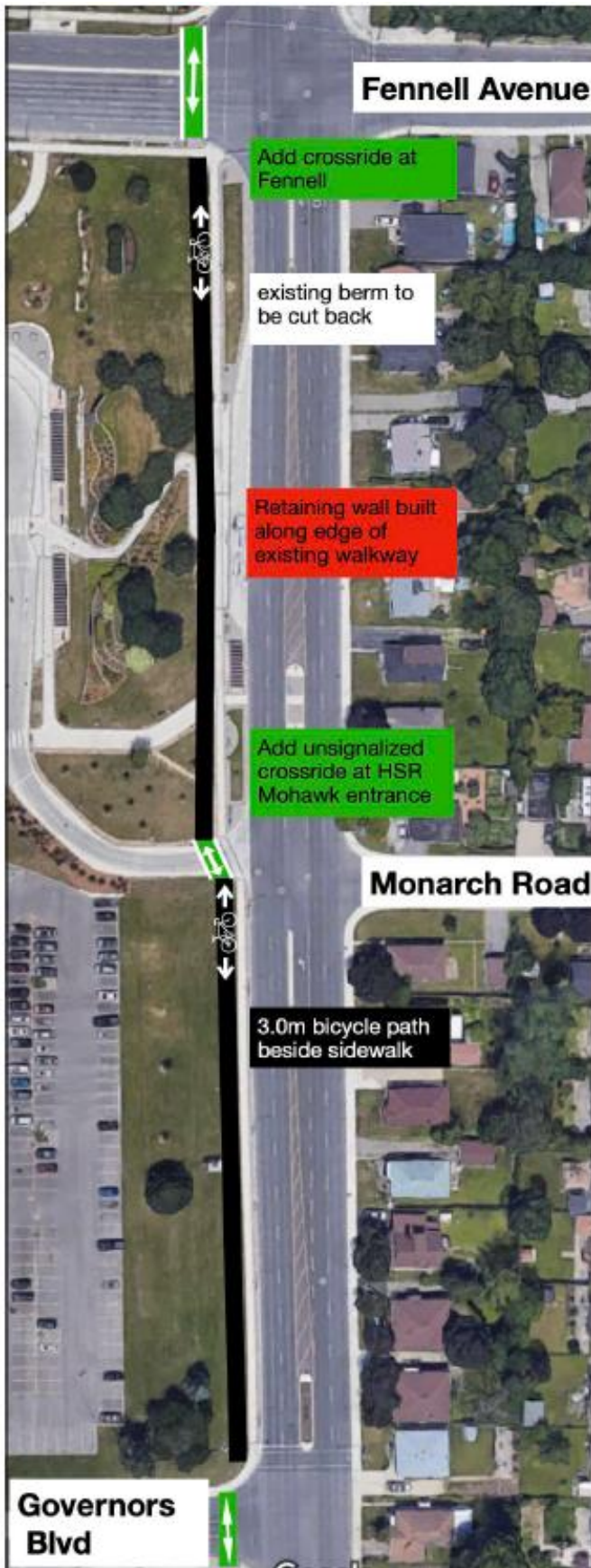
Increase kilometers of cycling infrastructure

Facilitate pandemic response through active transportation

## Detailed Maps



### Detailed Maps



**Cross Section Details**



North of Brantdale and south of Fennell: bicycle path adjacent to sidewalk on west side of street, avoiding existing trees.



Between Brantdale and Fennell: bicycle path follows edge of sidewalk, plants will be removed/relocated.

**Project Contacts**

**Project Feasibility and Outreach**

Danny Pimentel, Project Manager: [danny.pimentel@hamilton.ca](mailto:danny.pimentel@hamilton.ca)

**Project Design and Implementation**

Mushfiqur Rahman, Senior Project Manager: [mushfiqur.rahmen@hamilton.ca](mailto:mushfiqur.rahmen@hamilton.ca)