



Hamilton

1:300 OR AS SHOWN

L12



HAMILTON PIPELINE TRAIL MASTER PLAN

OCTOBER 2015



LEGEND

- PROPERTY LINE
- LONG TERM PIPELINE PATH OF TRAVEL
- SHORT TERM PIPELINE PATH OF TRAVEL
- EXISTING TREES TO REMAIN
- EXISTING TREES TO BE REMOVED
- PROPOSED TREE PLANTING
- PROPOSED SHRUB/ PERENNIAL PLANTING
- PROPOSED SEATING
- PROPOSED WAYFINDING ELEMENT
- PROPOSED PUBLIC ART
- PROPOSED WASTE RECEPTACLE
- ASPHALT PAVING
- CONCRETE PAVING
- PROPOSED PARKING SPACE REMOVAL
- TRAIL REALIGNMENT
- OPTICAL SPEED TABLE
- SHARROW
- SIGNED BIKE ROUTE
- BIKE LANE
- MIXED CROSSIDE
- PEDESTRIAN SIGNAL
- 100m TRAIL MARKER
- 1km TRAIL MARKER



Hamilton

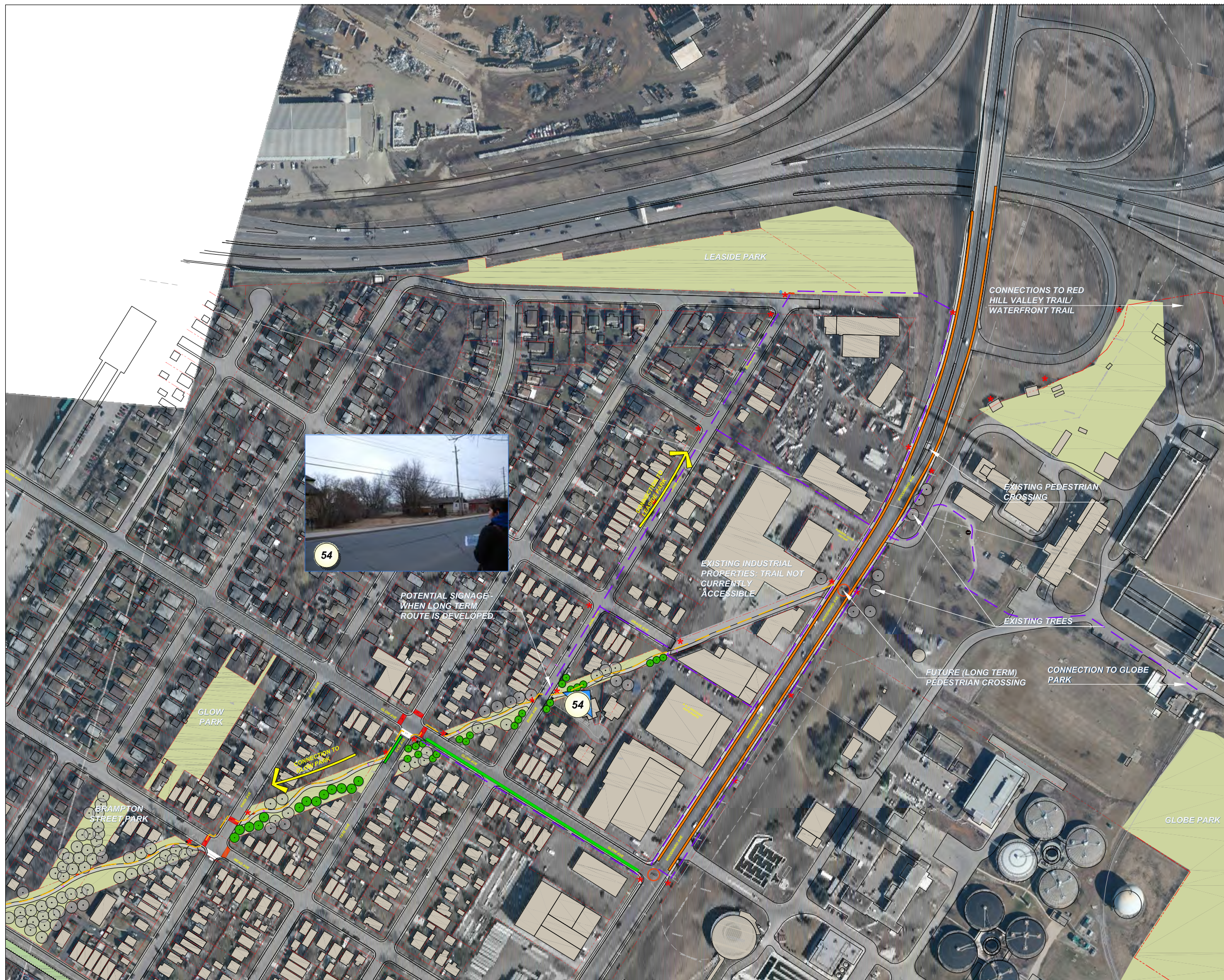
1:300 OR AS SHOWN

L13



HAMILTON PIPELINE TRAIL MASTER PLAN

OCTOBER 2015



LEGEND

- PROPERTY LINE
- LONG TERM PIPELINE PATH OF TRAVEL
- SHORT TERM PIPELINE PATH OF TRAVEL
- EXISTING TREES TO REMAIN
- EXISTING TREES TO BE REMOVED
- PROPOSED TREE PLANTING
- PROPOSED SHRUB/ PERENNIAL PLANTING
- PROPOSED SEATING
- PROPOSED WAYFINDING ELEMENT
- PROPOSED PUBLIC ART
- PROPOSED WASTE RECEPTACLE
- ASPHALT PAVING
- CONCRETE PAVING
- PROPOSED PARKING SPACE REMOVAL
- TRAIL REALIGNMENT
- OPTICAL SPEED TABLE
- SHARROW
- SIGNED BIKE ROUTE
- BIKE LANE
- MIXED CROSSRIDE
- PEDESTRIAN SIGNAL
- 100m TRAIL MARKER
- 1km TRAIL MARKER

A SHORT AND LONG TERM ROUTES (NORTHEAST SEGMENTS)
L13 1:1000

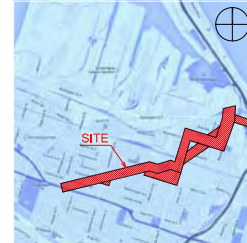
0m 10m 20m 50m 100m



Hamilton

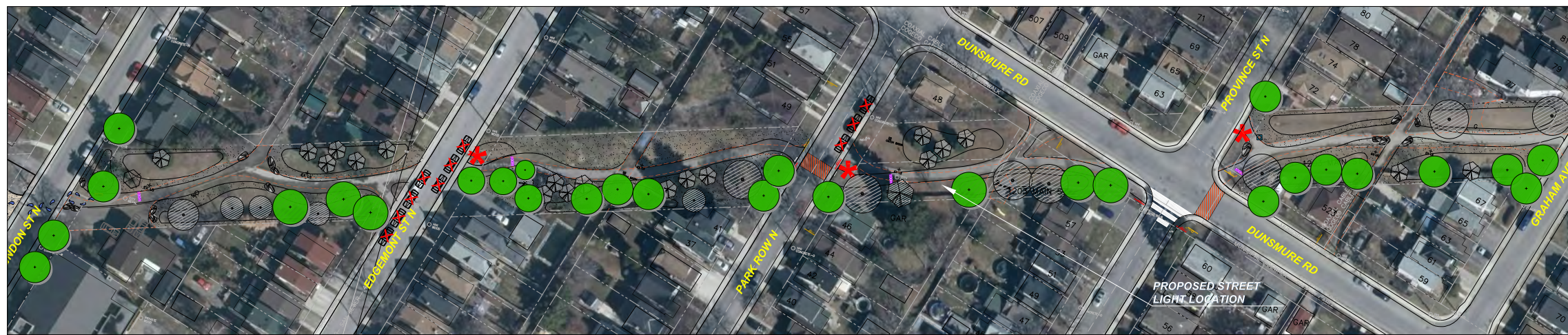
1:300 OR AS SHOWN

L14



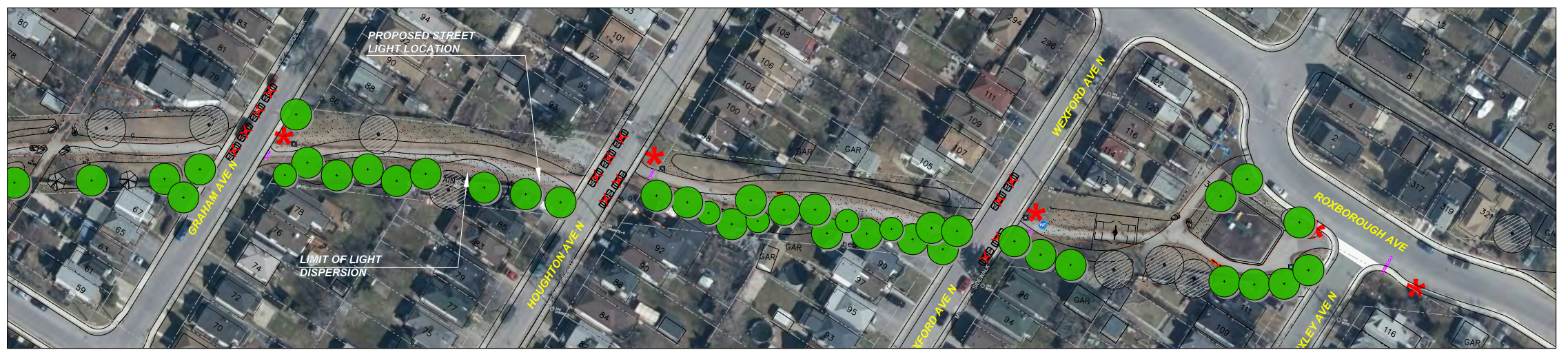
HAMILTON PIPELINE TRAIL MASTER PLAN

OCTOBER 2015



A LIGHTING
L14 1:400

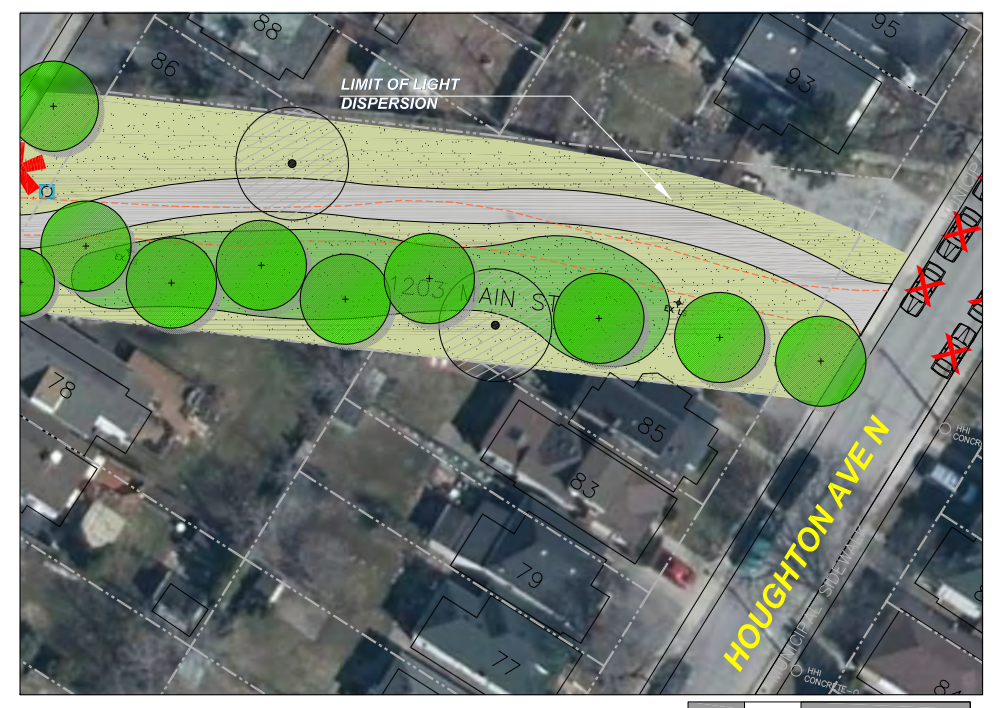
0m 5m 10m 20m 50m



B LIGHTING
L14 1:400

0m 5m 10m 20m 50m

NOTE:
THE LIGHTING SCHEMATICS SHOWN ON THE DRAWING ILLUSTRATES A TYPICAL SPACING WHICH MAY BE APPLIED THE LENGTH OF THE TRAIL. LIGHTING RECOMMENDATIONS BY ELECTRICAL CONSULTANT ARE BASED ON TRAIL WIDTH, AND HIGH PERFORMANCE LUMINAIRES.



C LIGHTING - ENLARGEMENT
L14 1:200

0m 5m 10m 25m

SILL Citylitter™ LED selux

Project: AS NOTED City: SEE LAYOUT

Series	Optics	Mounting	Light Engine	CCT	Finish	Voltage	Options
SL100	100° Beam	100° Beam	100W LED	3000K	Black	120V	SL100-100W-3000K

Sill Citylitter™ LED selux

File Information

File Name	Size	Created	Modified	Author	Options
Sill Citylitter™ LED.dwg	100KB	10/15/15	10/15/15	J. Smith	SL100-100W-3000K

City of Hamilton Public Works Department

STANDARD PARK LIGHT - YORK LUMINAIRE LED

PK-1433.04

NOT RECOMMENDED FOR TRAIL DUE TO WIDE LIGHT DISTRIBUTION PATTERN.

- LEGEND**
- PROPERTY LINE
 - LONG TERM PIPELINE PATH OF TRAVEL
 - SHORT TERM PIPELINE PATH OF TRAVEL
 - EXISTING TREES TO REMAIN
 - EXISTING TREES TO BE REMOVED
 - PROPOSED TREE PLANTING
 - PROPOSED SHRUB/ PERENNIAL PLANTING
 - PROPOSED SEATING
 - PROPOSED WAYFINDING ELEMENT
 - PROPOSED PUBLIC ART
 - PROPOSED WASTE RECEPTACLE
 - ASPHALT PAVING
 - CONCRETE PAVING
 - PROPOSED PARKING SPACE REMOVAL
 - TRAIL REALIGNMENT
 - OPTICAL SPEED TABLE
 - SHARROW
 - SIGNED BIKE ROUTE
 - BIKE LANE
 - MIXED CROSSIDE
 - PEDESTRIAN SIGNAL
 - 100m TRAIL MARKER
 - 1km TRAIL MARKER

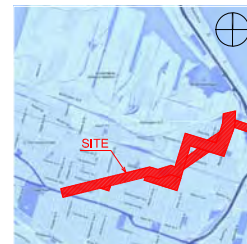
LIGHTING SCHEMATIC LAYOUT



Hamilton

1:300 OR AS SHOWN

L15

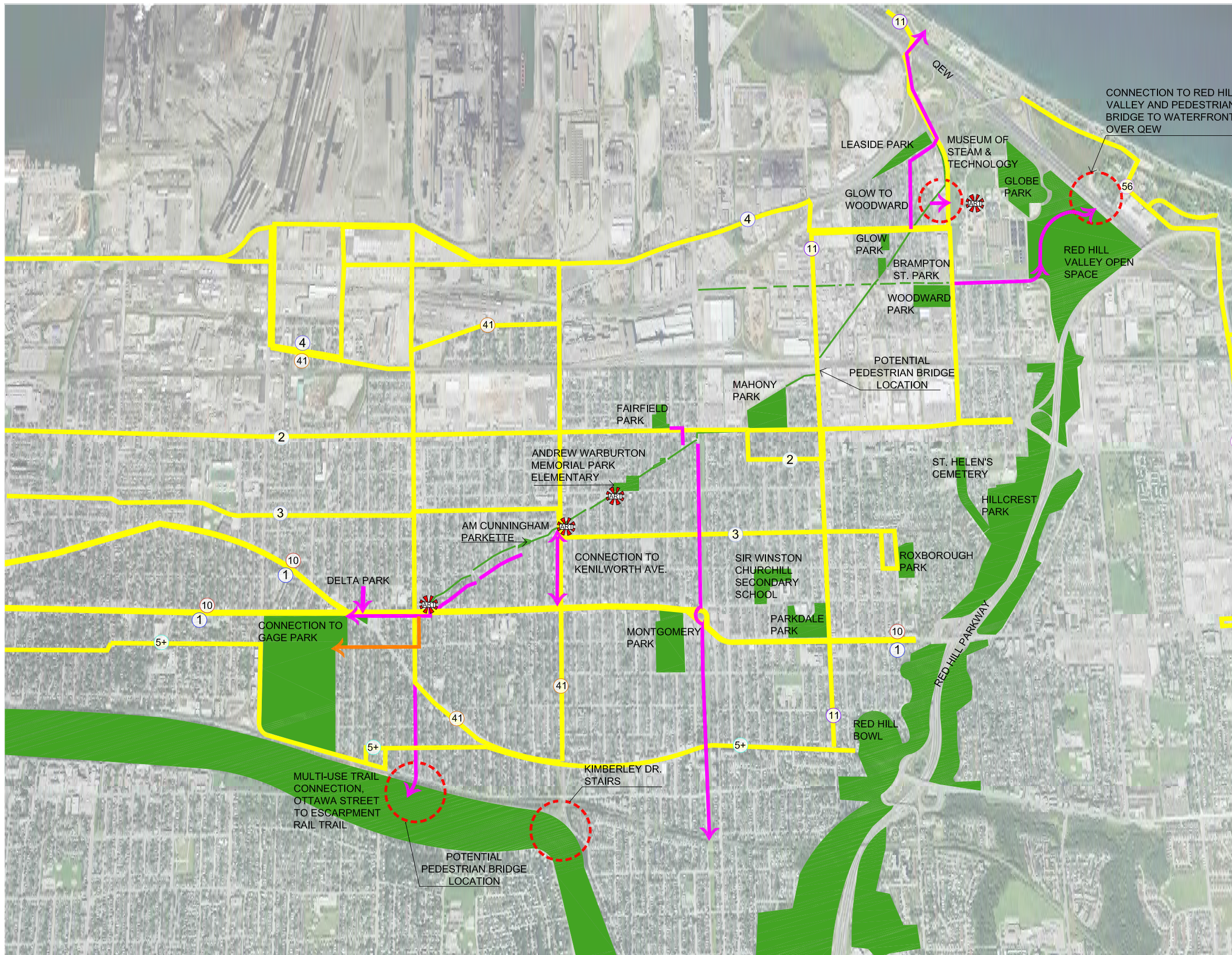


HAMILTON PIPELINE TRAIL MASTER PLAN

OCTOBER 2015

LEGEND

- BUS ROUTE
- BIKE ROUTE
- PEDESTRIAN ROUTE
- EXISTING PARK LAND
- PROPOSED PUBLIC ART



A CONNECTIONS + BUS ROUTES SURROUNDING TRAIL
L15 NTS



Hamilton

1:300 OR AS SHOWN

L16

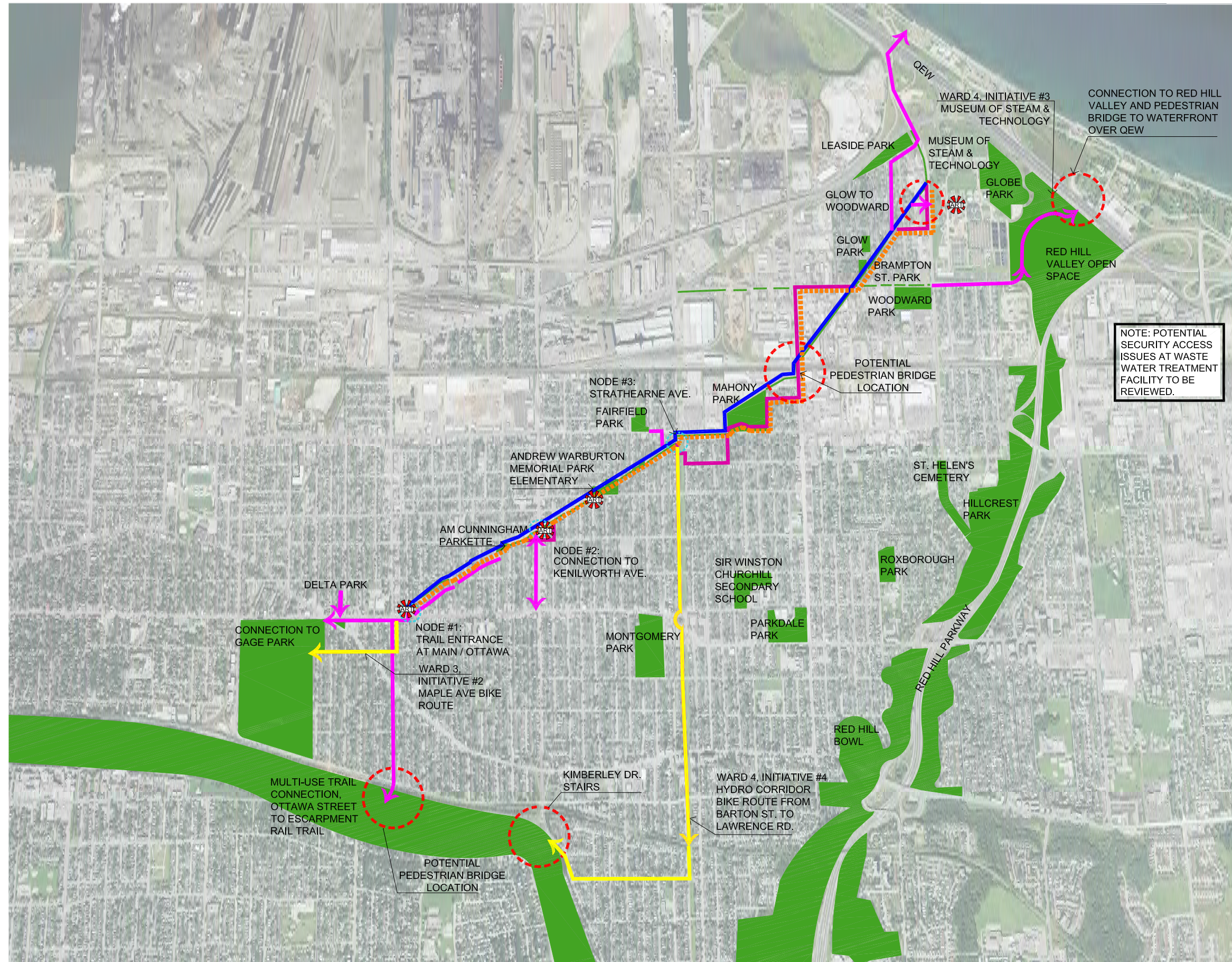


HAMILTON PIPELINE TRAIL MASTER PLAN

OCTOBER 2015

LEGEND

- SHORT TERM ROUTE
- LONG TERM ROUTE
- POSSIBLE ROUTE
- HAMILTON TRAILS MASTER PLAN INITIATIVES
- PROPOSED PUBLIC ART
- NODE - DIRECTIONAL MARKERS



NOTE: POTENTIAL SECURITY ACCESS ISSUES AT WASTE WATER TREATMENT FACILITY TO BE REVIEWED.