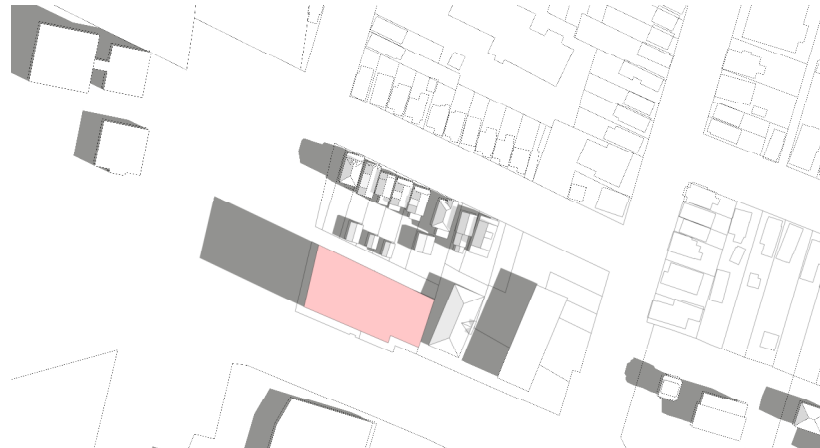
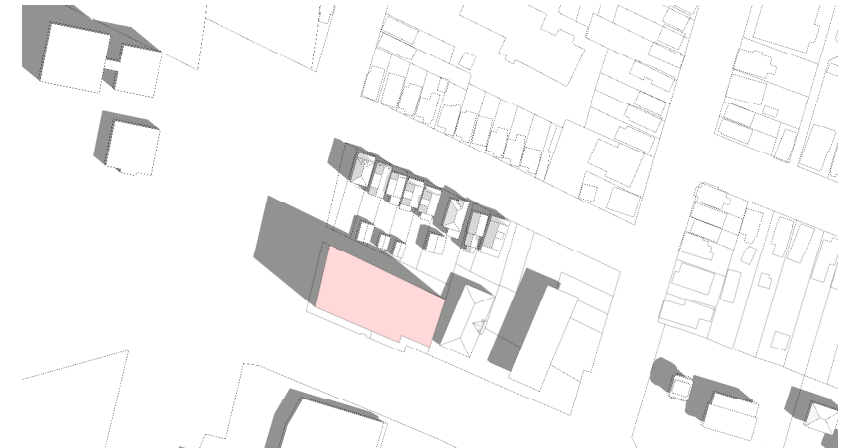




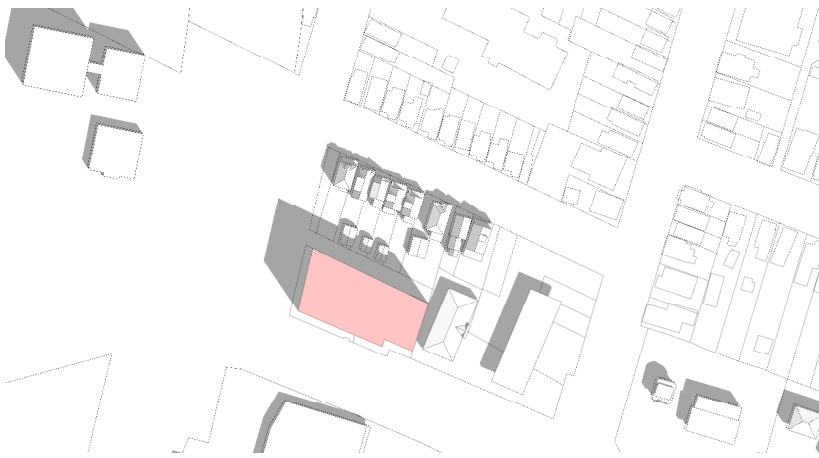
**Mar.21 @ 8:50am**  
**Sunrise + 1.5hrs**



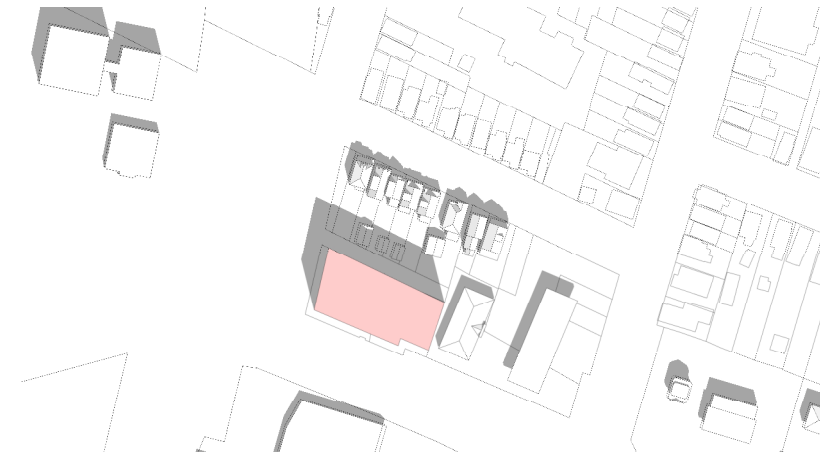
**Mar.21 @ 9:50am**



**Mar.21 @ 10:50am**



**Mar.21 @ 11:50am**



**Mar.21 @ 12:50pm**

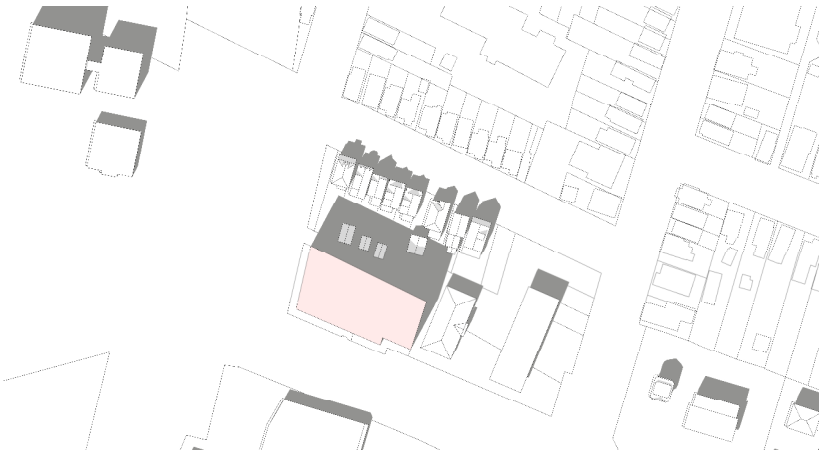


**Mar.21 @ 1.26pm**  
**Solar Noon**

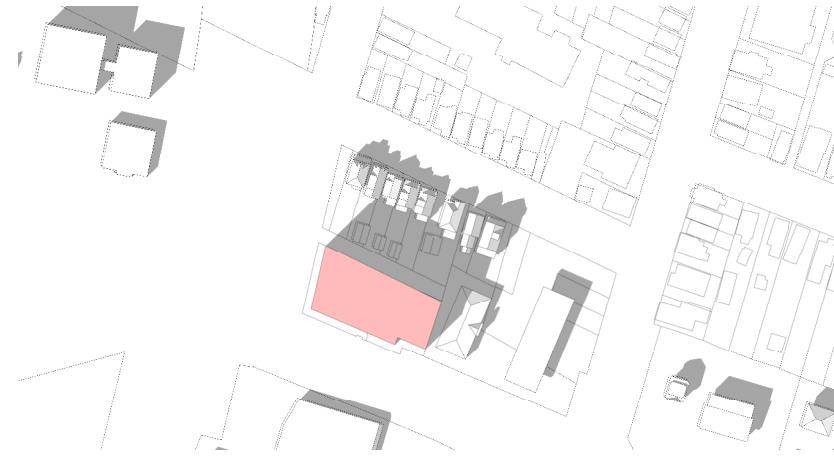
**DESIGN REVIEW PANEL PRESENTATION**  
676 King Street West

**LINTACK ARCHITECTS**  
INCORPORATED

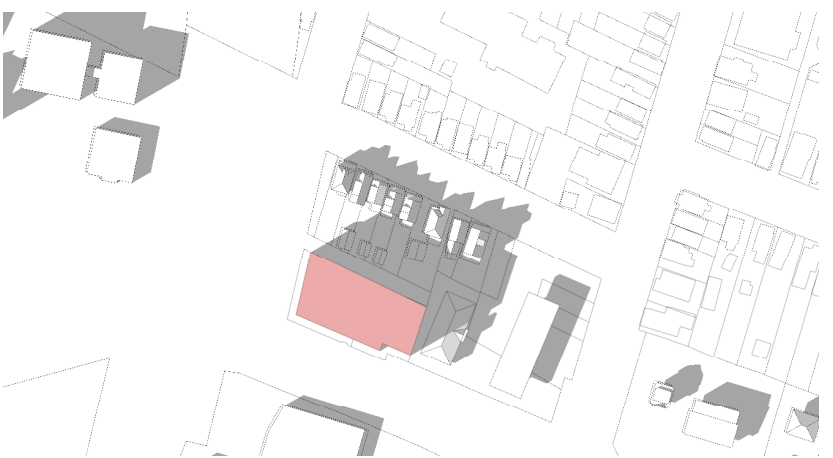
**SHADOW STUDY**  
March 21st  
As-of-Right – 22m



Mar.21 @ 2:50pm



Mar.21 @ 3:50pm



Mar.21 @ 4:50pm

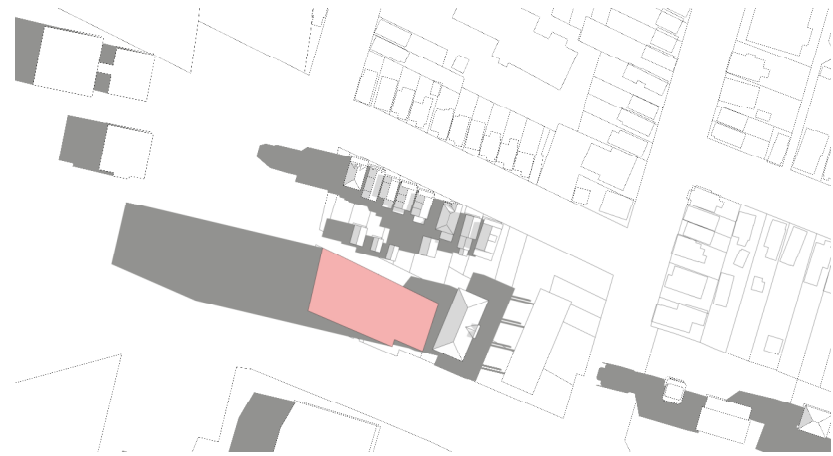


Mar.21 @ 6:03pm  
Sunset – 1.5hrs

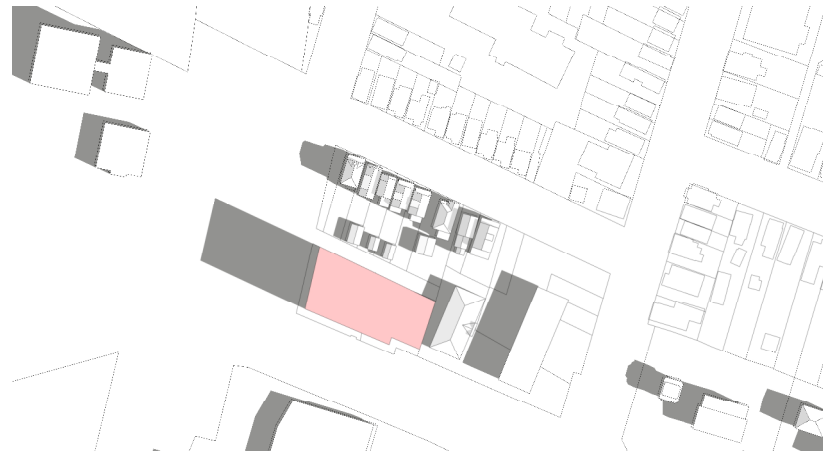
**DESIGN REVIEW PANEL PRESENTATION**  
676 King Street West

**LINTACK ARCHITECTS**  
INCORPORATED

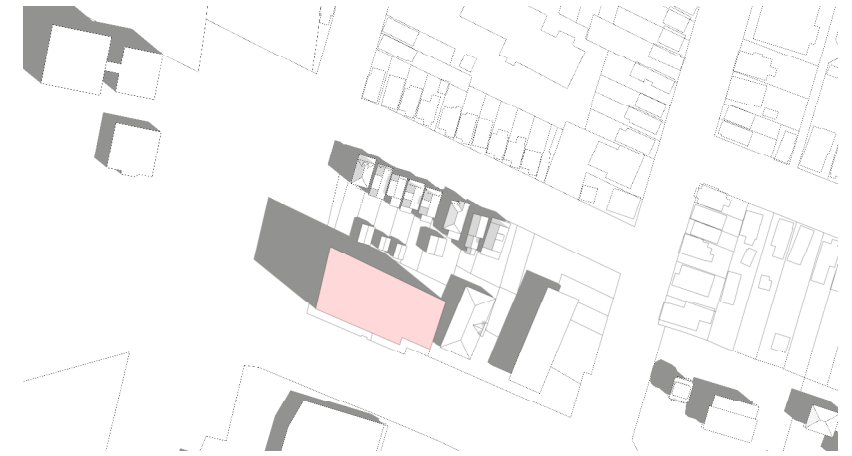
**SHADOW STUDY**  
March 21st  
As-of-Right – 22m



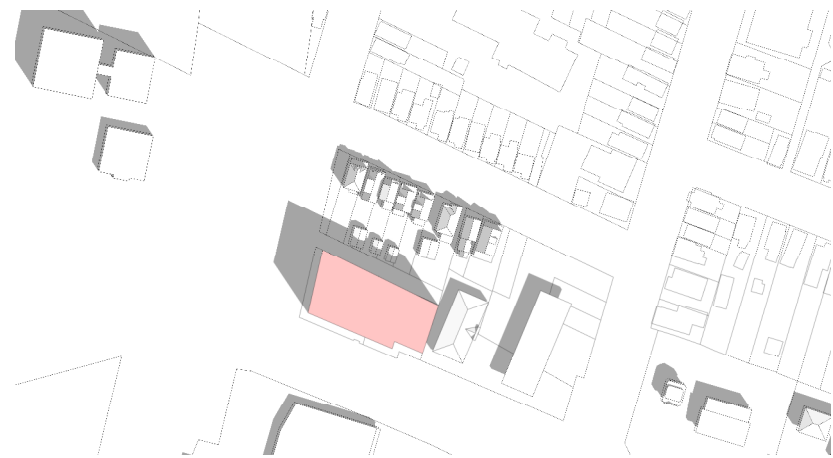
Sep.21 @ 8:35am  
Sunrise + 1.5hrs



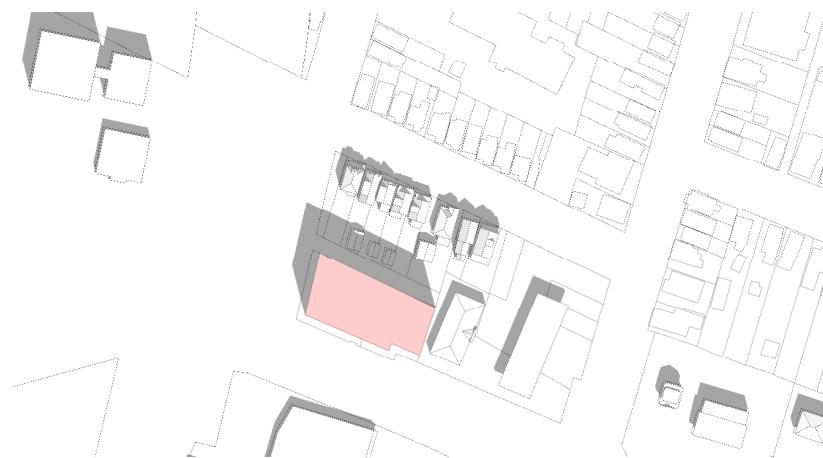
Sep.21 @ 9:35am



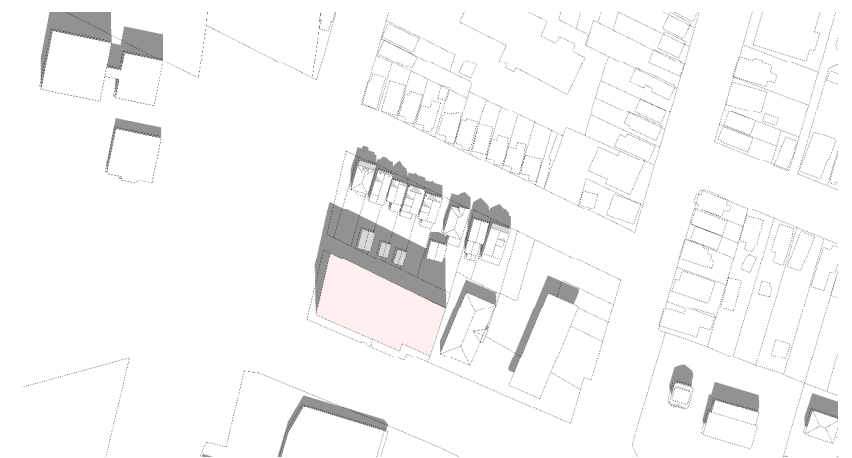
Sep.21 @ 10:35am



Sep.21 @ 11:35am



Sep.21 @ 12:35pm

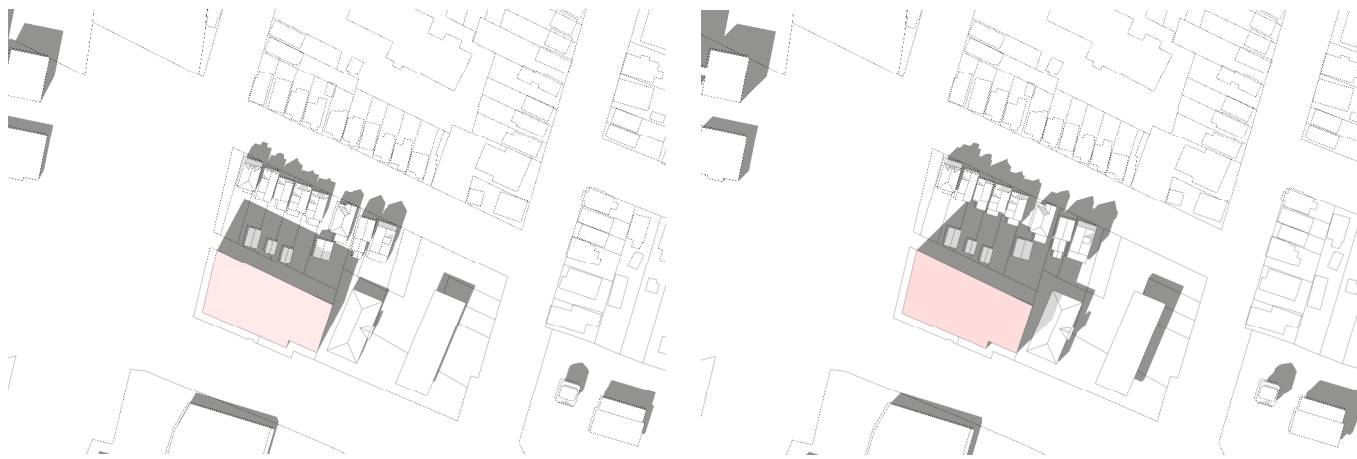


Sep.21 @ 1:12pm  
Solar Noon

**DESIGN REVIEW PANEL PRESENTATION**  
676 King Street West

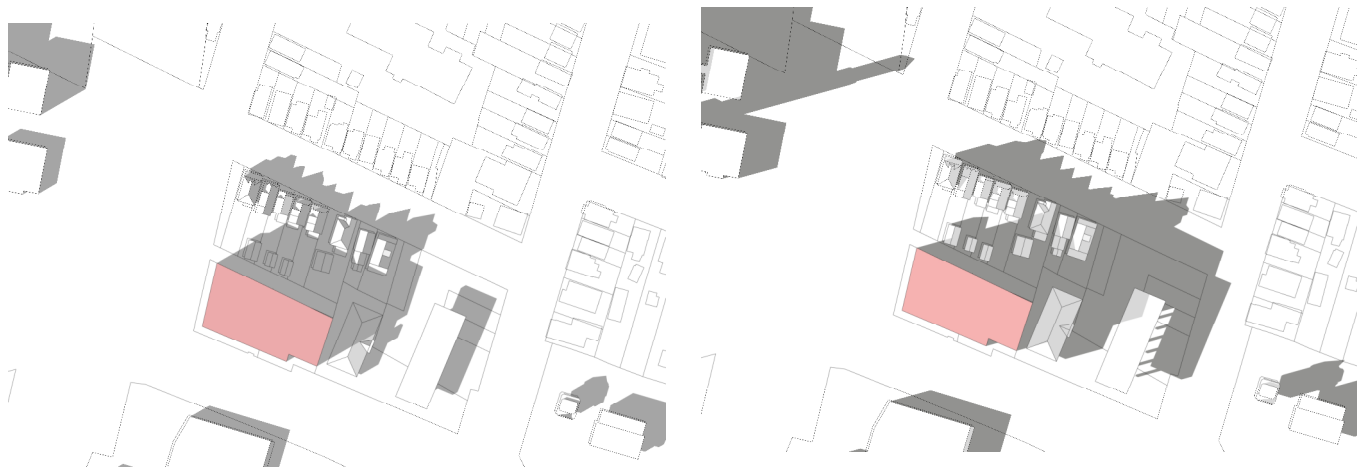
**LINTACK ARCHITECTS**  
INCORPORATED

**SHADOW STUDY**  
September 21st  
As-of-Right – 22m



**Sep.21 @ 2:35pm**

**Sep.21 @ 3:35pm**



**Sep.21 @ 4:35pm**

**Sep.21 @ 5:48pm**

**Analysis**

The City's Sun Shadow Guidelines include Impact Criteria and considerations analysis as follows:

Criteria A – Public Realm

Shadows from proposed development shall allow for a minimum of 3 hours of sun coverage between 10:00am and 4:00pm as measured from March 21<sup>st</sup> to September 21<sup>st</sup> on public sidewalks, and public and private outdoor amenity space such as patios, sitting areas, and other similar programs.

The As-of-Right condition allows for a minimum of 2 hours of sun coverage during the indicated times and dates on sidewalks on Breadalbane Street and does not cast shadows on King Street. Shadows begin to be cast on private amenity areas such as the backyards to the north between 11:00am and noon and continue to do so until after 4:00pm. The private amenity areas of 8 properties would be affected by new shadows cast by the As-of-Right condition.

Criteria B – Common Amenity Areas

Shadows from the proposed development shall allow for a minimum of 50% sun coverage at all times of the day as measured from March 21<sup>st</sup> to September 21<sup>st</sup> on public plazas, parks and open spaces, school yards, and playgrounds.

There are no shadow impacts from the As-of-Right condition on any public common amenity areas.

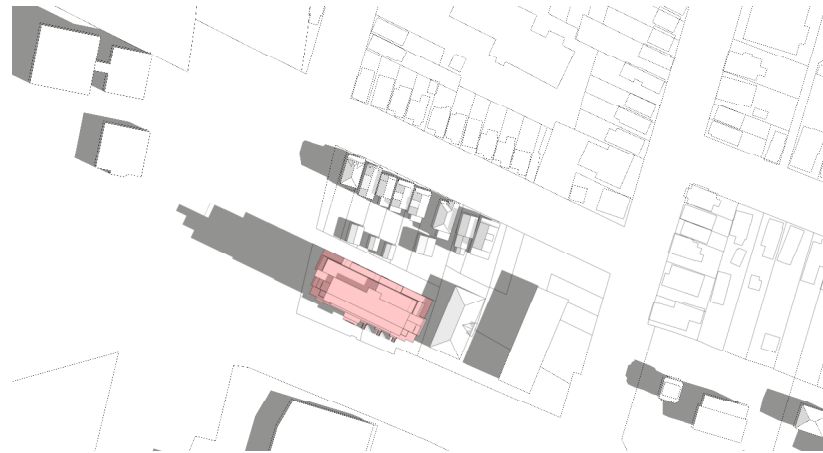
Criteria C – Primary Gathering Spaces in Downtown Hamilton

Downtown Hamilton contains a number of parks, squares, plazas and open space areas that serve as civic gathering spaces in the Downtown area. The quality, image and amenity of these spaces strongly affect how people perceive the Downtown. Development shall not cast any new net shadow between 10:00am and 4:00pm as measured from March 21<sup>st</sup> to September 21<sup>st</sup> on Gore Park, Prince's Square, City Hall Forecourt, Whithern Museum and Ferguson Station.

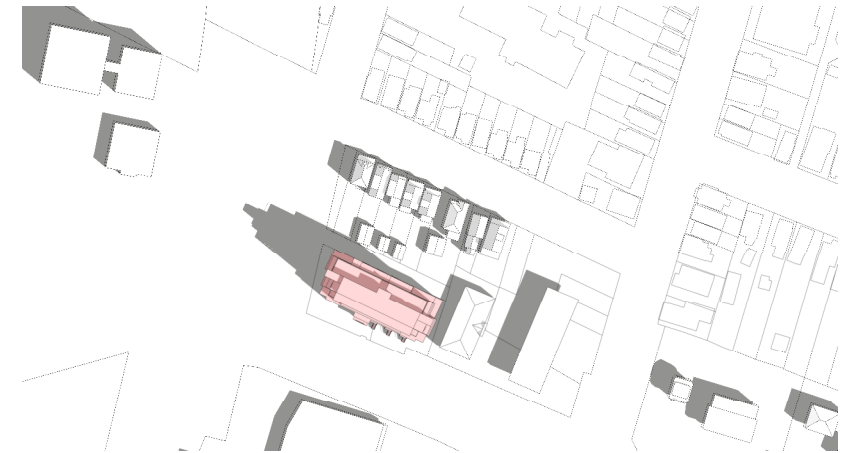
The As-of-Right condition does not cast any net new shadows on any primary gathering spaces in downtown Hamilton.



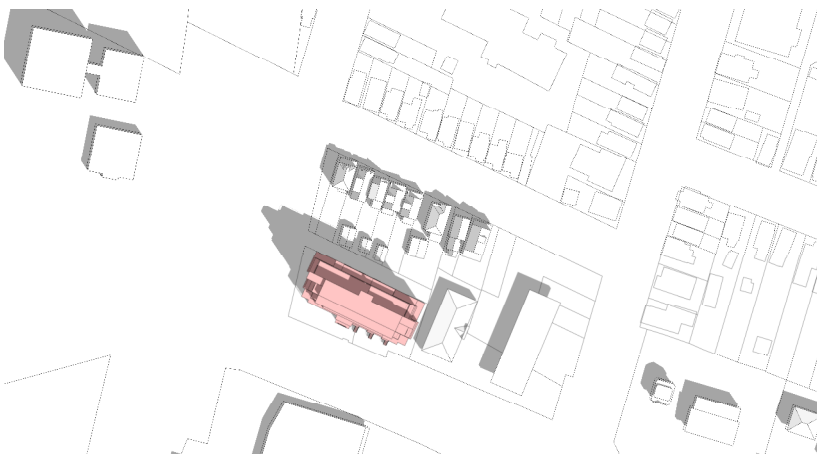
**Mar.21 @ 8:50am**  
**Sunrise + 1.5hrs**



**Mar.21 @ 9:50am**



**Mar.21 @ 10:50am**



**Mar.21 @ 11:50am**



**Mar.21 @ 12:50pm**

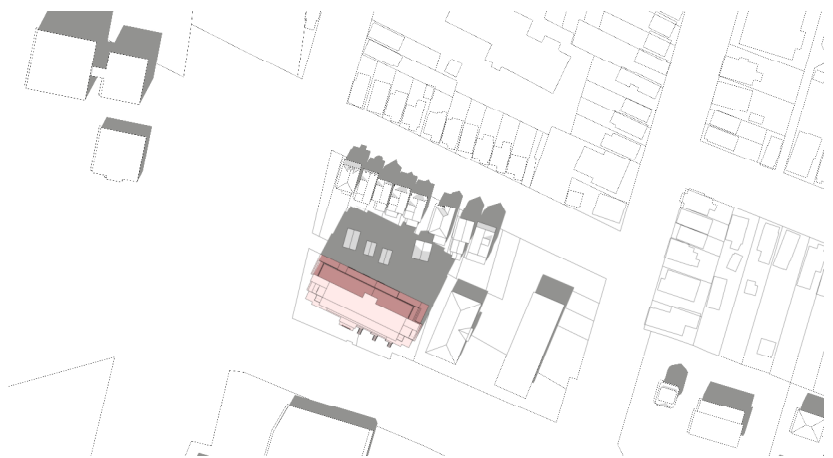


**Mar.21 @ 1:26pm**  
**Solar Noon**

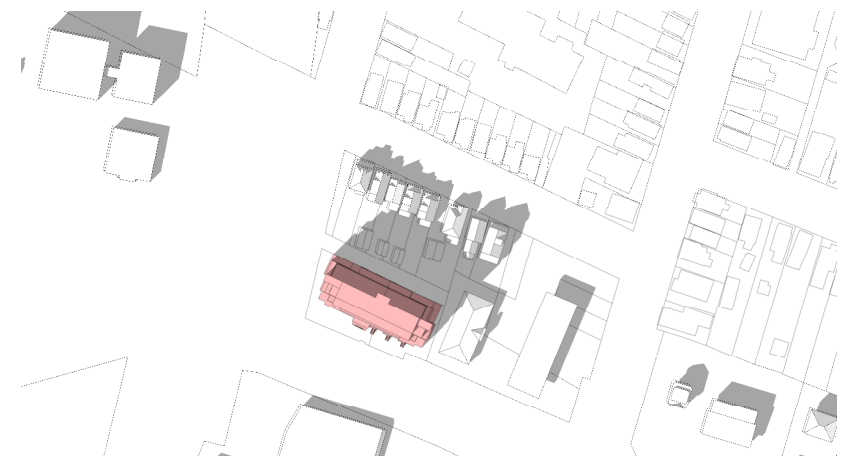
**DESIGN REVIEW PANEL PRESENTATION**  
676 King Street West

**LINTACK ARCHITECTS**  
INCORPORATED

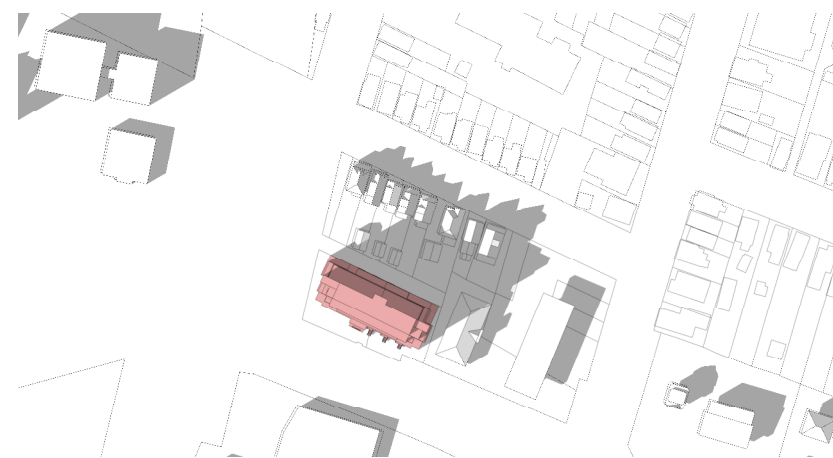
**SHADOW STUDY**  
March 21st  
Proposed 8-Storeys



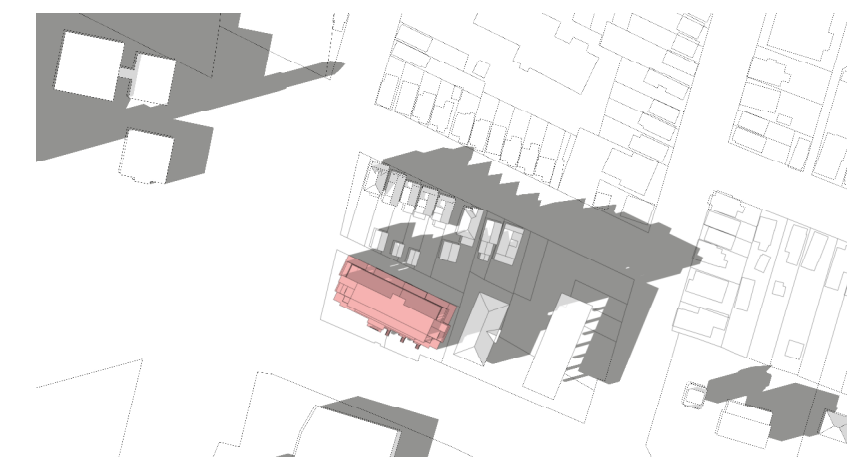
Mar.21 @ 2:50pm



Mar.21 @ 3:50pm



Mar.21 @ 4:50pm



Mar.21 @ 6:03pm  
Sunset – 1.5hrs

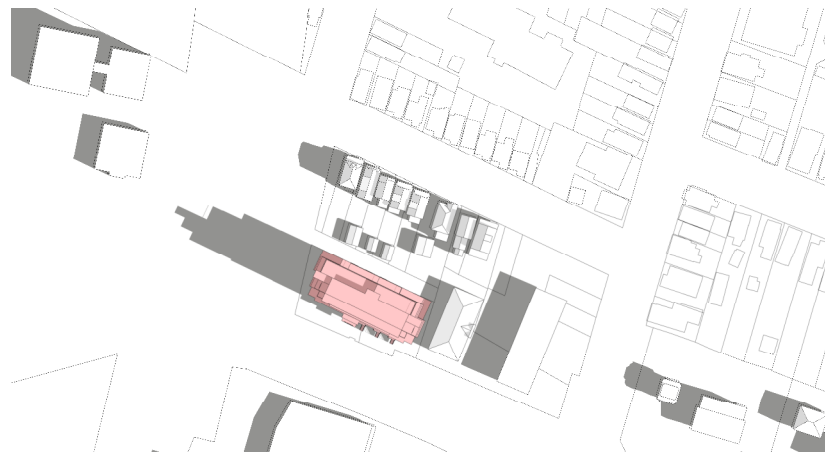
**DESIGN REVIEW PANEL PRESENTATION**  
676 King Street West

**LINTACK ARCHITECTS**  
INCORPORATED

**SHADOW STUDY**  
March 21st  
Proposed 8-Storeys



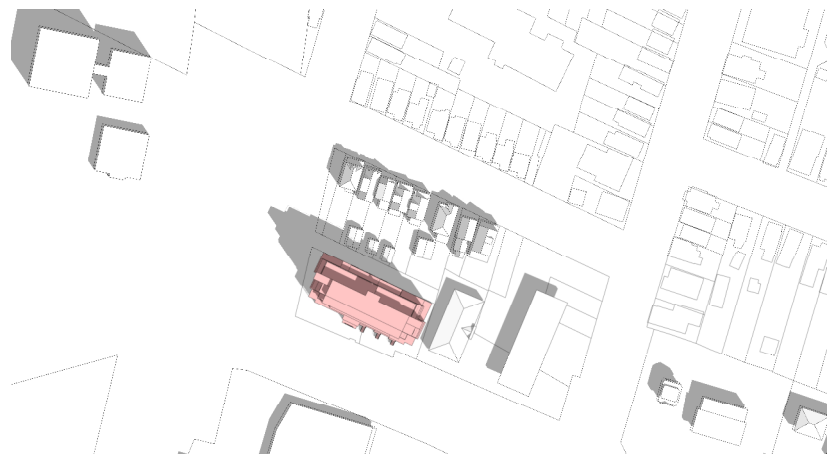
Sep.21 @ 8:35am  
Sunrise + 1.5hrs



Sep.21 @ 9:35am



Sep.21 @ 10:35am



Sep.21 @ 11:35am



Sep.21 @ 12:35pm



Sep.21 @ 1:12pm  
Solar Noon

**DESIGN REVIEW PANEL PRESENTATION**  
676 King Street West

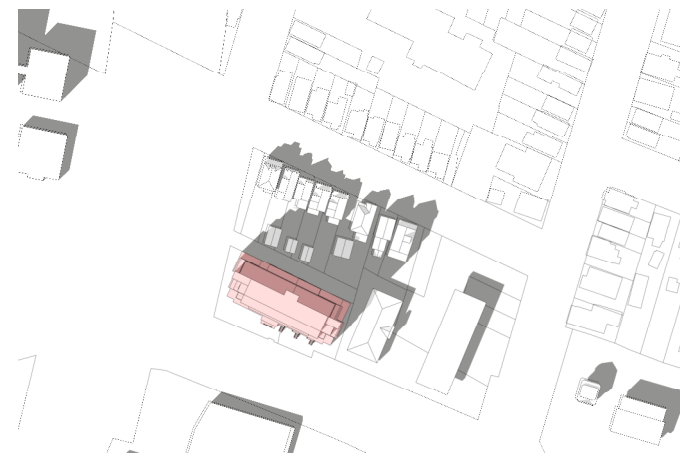
**LINTACK ARCHITECTS**  
INCORPORATED

**SHADOW STUDY**  
September 21st  
Proposed 8-Storeys

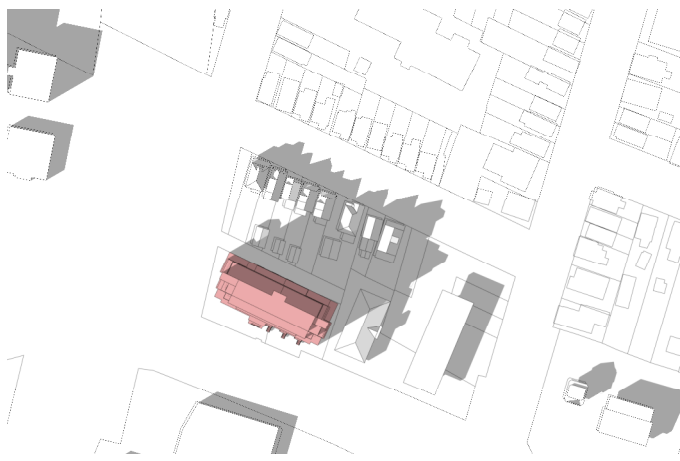




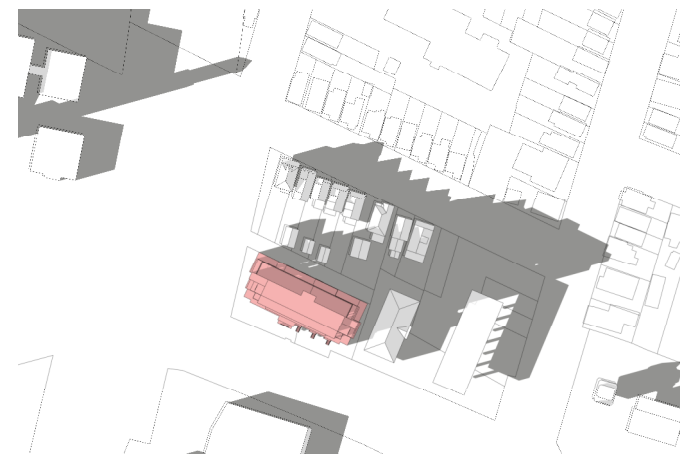
Sep.21 @ 2:35pm



Sep.21 @ 3:35pm



Sep.21 @ 4:35pm



Sep.21 @ 5:48pm

**Analysis**

The City's Sun Shadow Guidelines include Impact Criteria and considerations analysis as follows:

**Criteria A – Public Realm**

Shadows from proposed development shall allow for a minimum of 3 hours of sun coverage between 10:00am and 4:00pm as measured from March 21<sup>st</sup> to September 21<sup>st</sup> on public sidewalks, and public and private outdoor amenity space such as patios, sitting areas, and other similar programs.

The proposed condition also allows for a minimum of 2 hours of sun coverage during the indicated times and dates on sidewalks on Breadalbane Street and does not cast shadows on King Street. As with the As-of-Right condition, shadows begin to be cast on private amenity areas such as the backyards to the north between 11:00am and noon and continue to do so until after 4:00pm. The private amenity areas of the same 8 properties would be affected by new shadows cast by the proposed condition as are affected by the As-of-Right condition.

**Criteria B – Common Amenity Areas**

Shadows from the proposed development shall allow for a minimum of 50% sun coverage at all times of the day as measured from March 21<sup>st</sup> to September 21<sup>st</sup> on public plazas, parks and open spaces, school yards, and playgrounds.

There are no shadow impacts from the proposed condition on any public common amenity areas.

**Criteria C – Primary Gathering Spaces in Downtown Hamilton**

Downtown Hamilton contains a number of parks, squares, plazas and open space areas that serve as civic gathering spaces in the Downtown area. The quality, image and amenity of these spaces strongly affect how people perceive the Downtown. Development shall not cast any new net shadow between 10:00am and 4:00pm as measured from March 21<sup>st</sup> to September 21<sup>st</sup> on Gore Park, Prince's Square, City Hall Forecourt, Whithern Museum and Ferguson Station.

The proposed condition does not cast any net new shadows on any primary gathering spaces in downtown Hamilton.