



Hamilton

Concession Street and Mountain Brow Boulevard 2023 Construction Project

PUBLIC INFORMATION CENTRE (PIC)

Tuesday July 5, 2022

6:30 to 8:30PM

Carmen's Banquet Centre

Agenda

- Welcome from Councillor Tom Jackson
- Housekeeping Rules
- Representatives
- Project Details
- Question and Answer Session
- Meeting Adjournment

House Keeping Rules

- Microphones will be Muted.
 - Question and Answer Session will follow the Presentation.
 - Emails Responses will be provided to Questions that are not answered during the allotted time or require Consultation with City Staff.
-

- Please email any questions to:
Lin.Dou@hamilton.ca
- Tonight's PowerPoint Presentation will be available through the Councillors Office.
- For this presentation and other project information please visit the Concession St and Mountain Brow Improvements Project Website:
www.hamilton.ca/mountainbrow

Staff Representatives

- Engineering Services inclusive of:
 - ❖ Susan Jacob → Acting Director, Engineering Services, Public Works
 - ❖ Mike Becke → Acting Manager, Design, Public Works
 - ❖ Mitchell Knott → Acting Senior Project Manager, Design, Public Works
 - ❖ Lin Dou and Nasrin Firouzbakht → Design Team
 - ❖ Chris McCafferty → Manager, Design, Planning and Economic Development

- Transportation Operation & Maintenance inclusive of:
 - ❖ Mike Field → Acting Director, Transportation, Operations and Maintenance, Public Works
 - ❖ Lanre Akindipe → Senior Project Manager, Transportation Systems, Public Works
 - ❖ Mushfiqur Rahman → Senior Project Manager, Transportation Engineering, Public Works
 - ❖ Bakir Fayad → Project Manager, Pedestrian and Cycling Engineering, Public Works

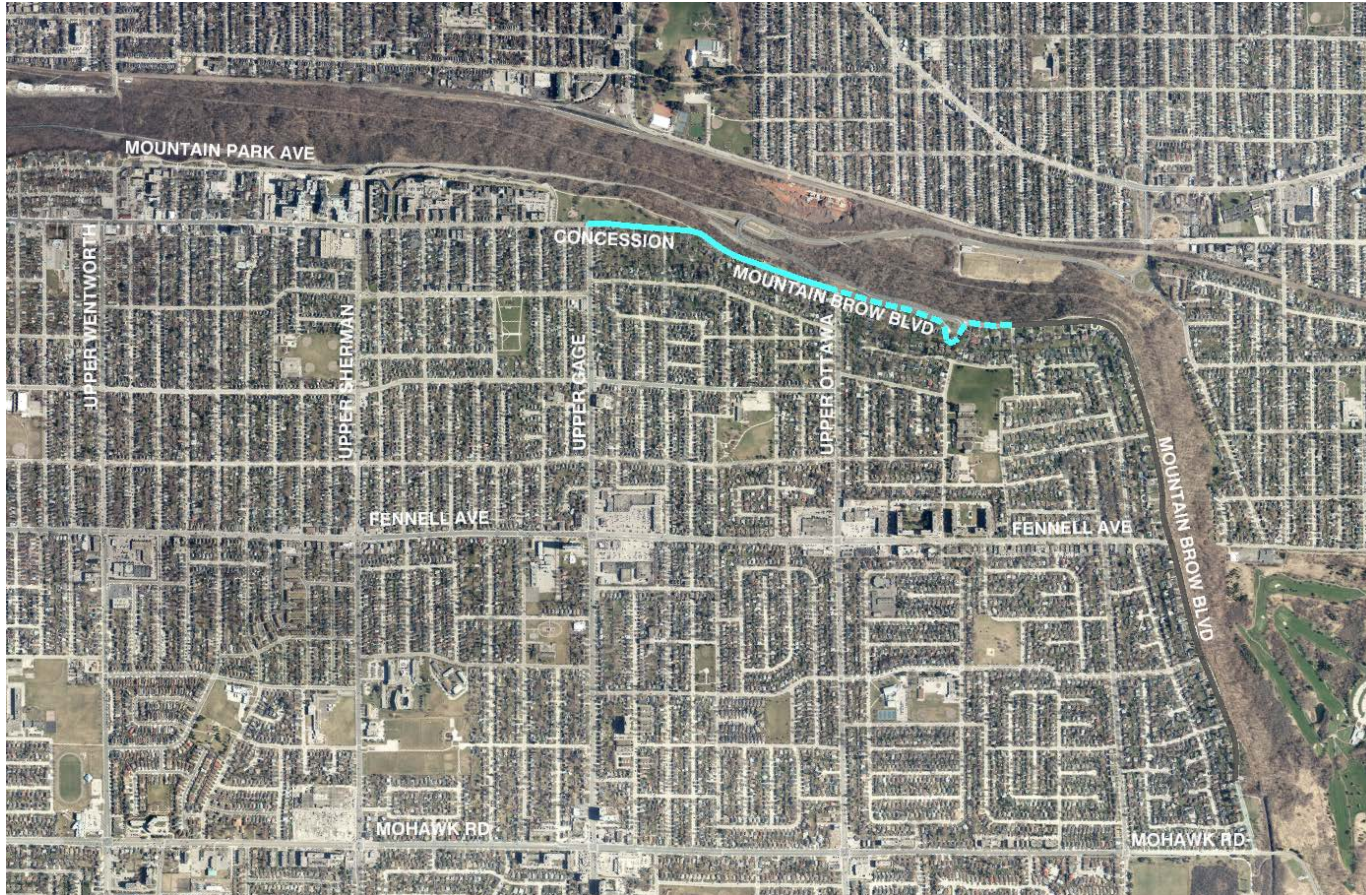
General Details

(as previously presented in January 2022)

Project Limits

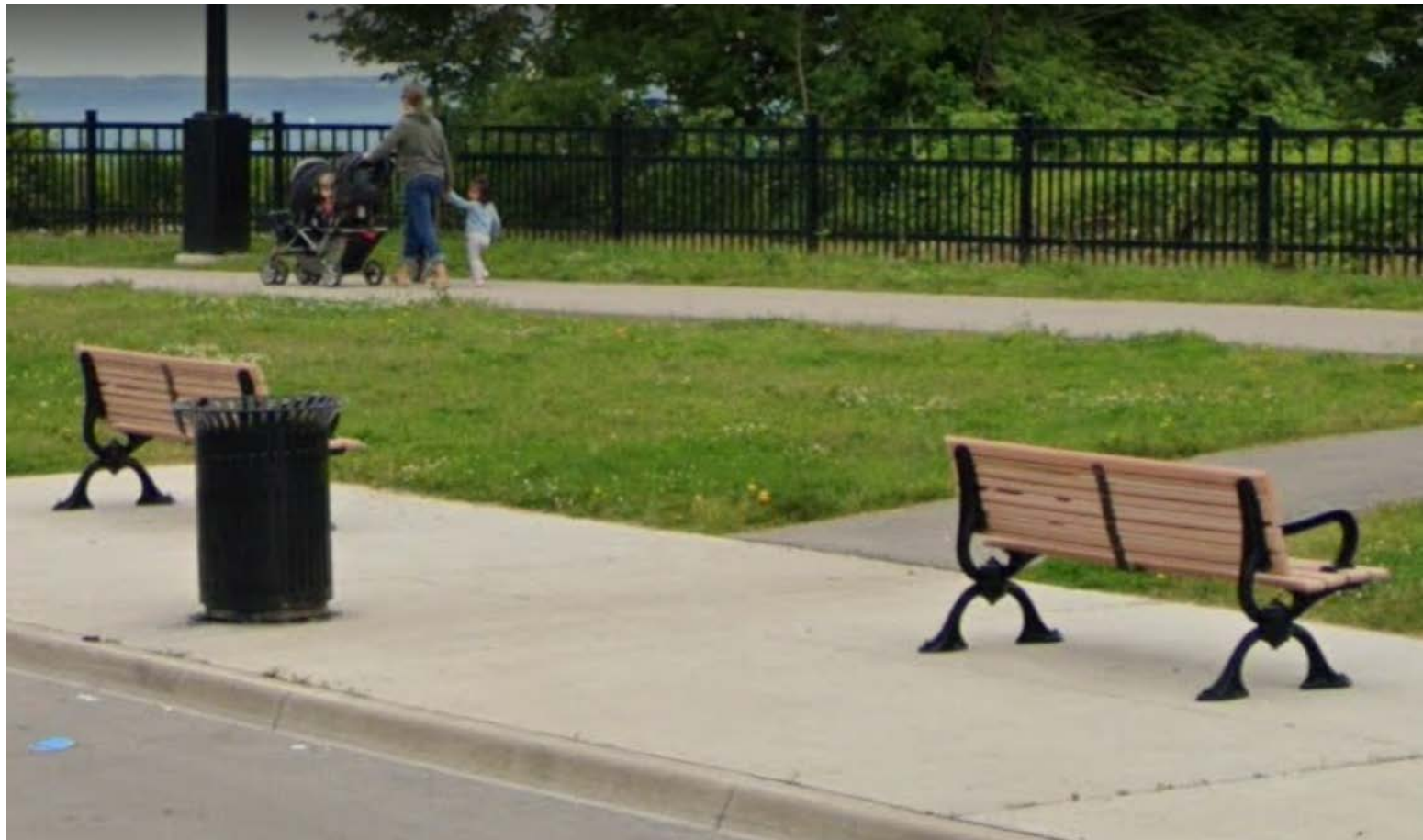
Concession/Mountain Brow Blvd
From: Upper Gage Ave
To: Oakcrest Dr

Active Transportation Improvements,
Sidewalk Construction, Road
Reconstruction and Resurfacing



Street Furniture

Shall be provided consistent with those used in the completed Mountain Brow Blvd project.



Solar Lighting

Shall be provided on the Escarpment side of the Road where gaps are identified by an Illumination Review. Products will be consistent with those used in the completed Mountain Brow Blvd project.



Ornamental Fencing

Shall be provided consistent with the completed Mountain Brow Blvd project except that the height will be increased to 1.5m as required by the Constrained Corridor and to address User Safety.



Revised Project Scope: Concession and Mountain Brow

Upper Gage to Upper Ottawa

- Roadway Construction/Narrowing and Watermain Replacement

Upper Ottawa to Oakcrest

- Roadway Rehabilitation

Mountain Drive Park to Upper Ottawa

- Active Transportation Facilities
 - North Side
 - ... Multi-Use Path and Sidewalks
 - South Side
 - ... Proposed Sidewalk removed from Project
- Installation of Black Ornamental Fencing adjacent to Escarpment
- Solar Lighting Review for Active Transportation Facilities
- Conversion of Billy Foley Parkette Parking Lot to Layby Parking

Upper Ottawa to Oakcrest

- Active Transportation Facilities - Repurposing South Curb Lane to provide a:
 - ... Raised Multi-Use Facility

Finalized Design Upper Gage to Oakcrest

Key Components:

- ...Multi-Use path provided from Mountain Drive Park to Upper Ottawa (North Side - Elevated)
- ...Multi-Use path provided from Upper Ottawa to Oakcrest (South Side - Elevated)
- ...2 eastbound Vehicular Lanes maintained through Traffic Circle
- ...Boulevard widened adjacent to the Sidewalk along Mountain Drive Park (North Side)

Notes:

- ...Sidewalk has been deleted from Upper Gage to Upper Ottawa (South Side)
- ... Property Acquisition at 4 Mountain Brow Boulevard is no longer required
- ...Tree Removals identified from Rendell to Upper Ottawa are no longer required but 2 trees have been identified for removal in front of 154/164 Mountain Brow Boulevard



CONCESSION ST

MOUNTAIN PARK AVENUE

EAST 39th

UPPER GAGE

REVISED

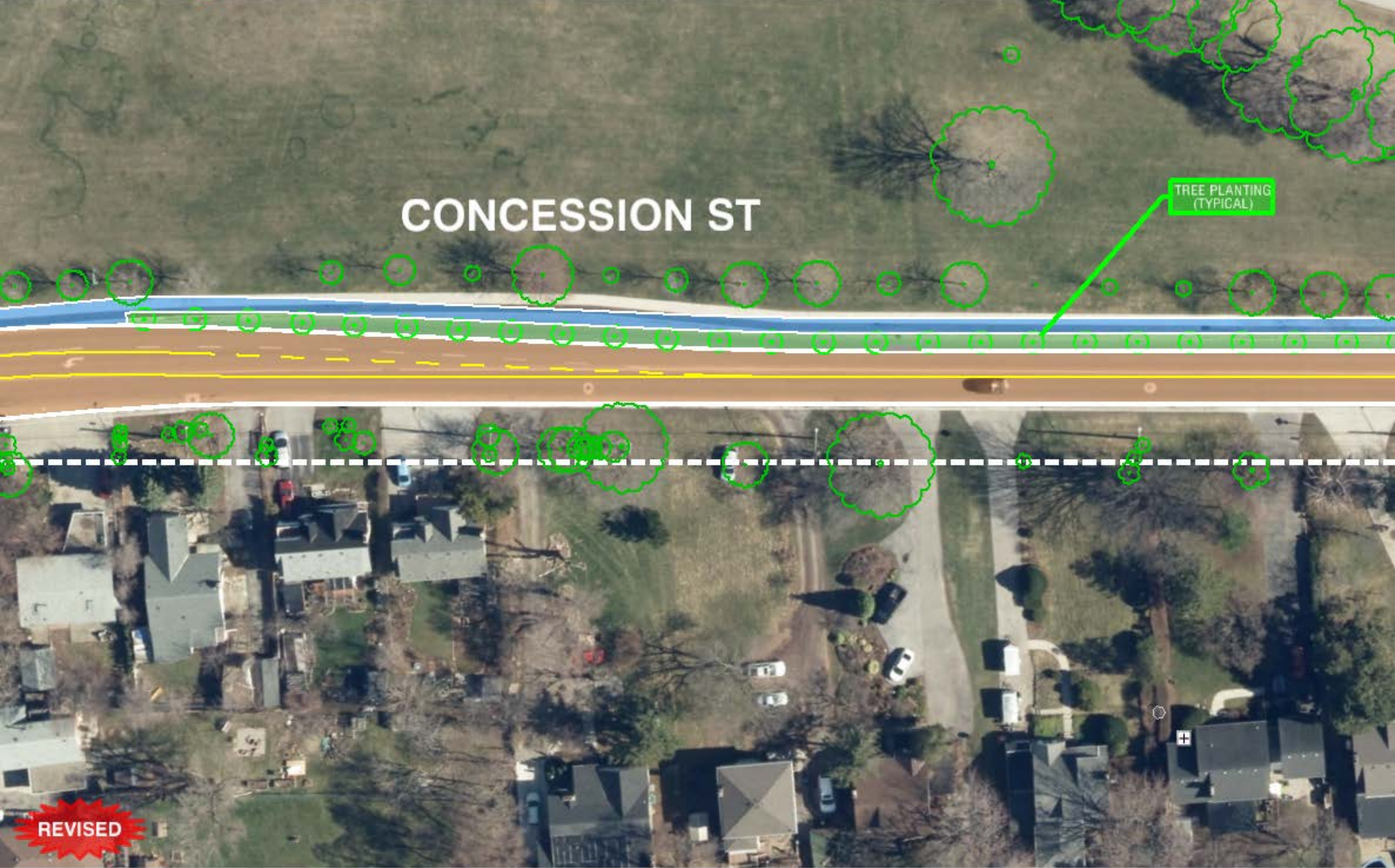
ROADS

ASPHALT MULTI-USE FACILITY

CONCRETE SIDEWALK AND AMENITY AREAS

CONCESSION ST

TREE PLANTING
(TYPICAL)

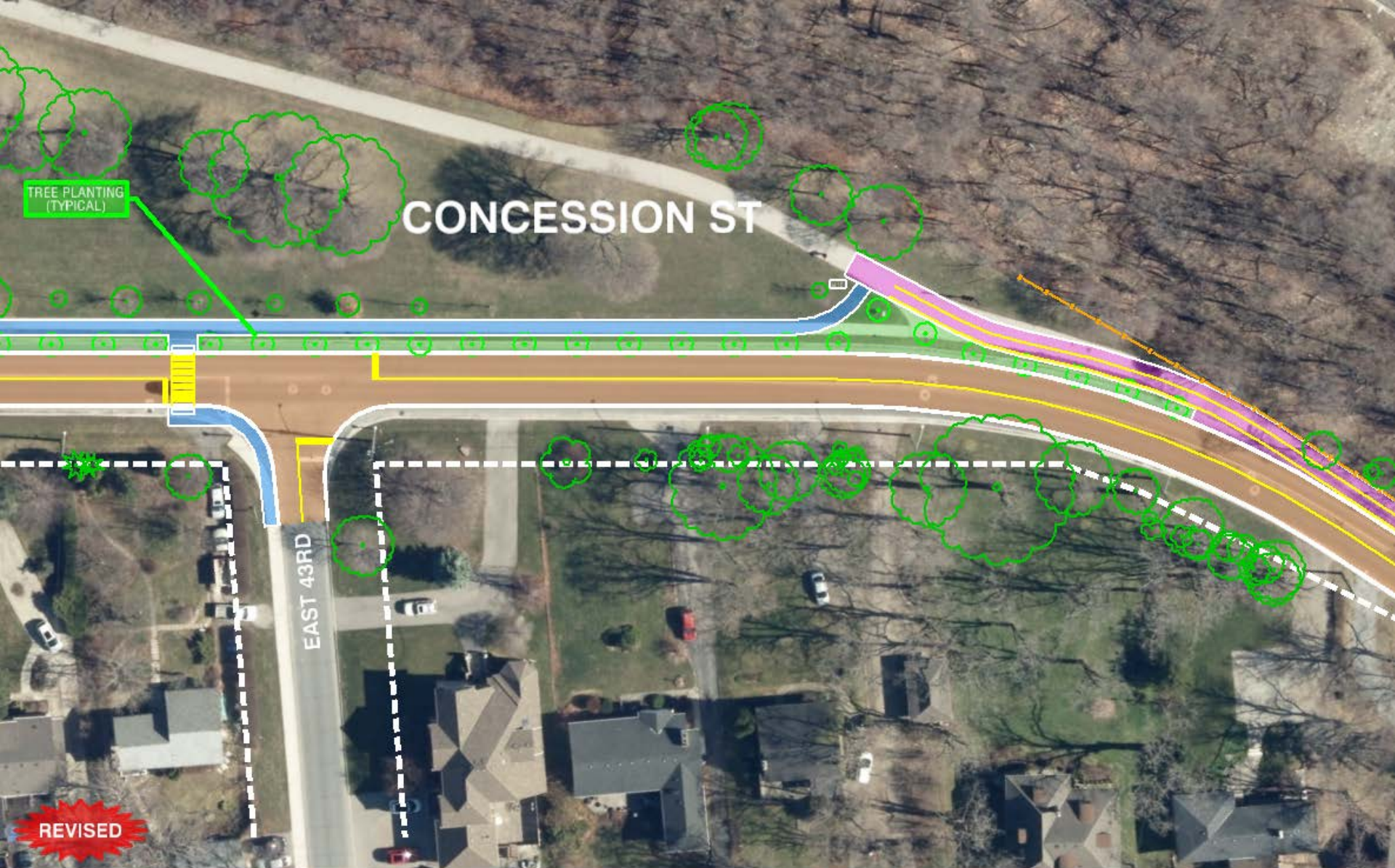


REVISED

ROADS

ASPHALT MULTI-USE FACILITY

CONCRETE SIDEWALK AND AMENITY AREAS



TREE PLANTING (TYPICAL)

CONCESSION ST

EAST 43RD

REVISED

ROADS

ASPHALT MULTI-USE FACILITY

CONCRETE SIDEWALK AND AMENITY AREAS

MOUNTAIN BROW BLVD

1.5m DECORATIVE FENCE ADJACENT TO MULTI-USE PATH (TYPICAL)

1.2m DECORATIVE FENCE ADJACENT TO CONCRETE SIDEWALK (TYPICAL)

TREE PLANTING (TYPICAL)

REVISED

- ROADS
- ASPHALT MULTI-USE FACILITY
- CONCRETE SIDEWALK AND AMENITY AREAS

KENILWORTH ACCESS

MOUNTAIN BROW BLVD

CONVERSION TO LAY-BY STYLE PARKING

TREE PLANTING (TYPICAL)

1.2m DECORATIVE FENCE ADJACENT TO CONCRETE SIDEWALK (TYPICAL)

GUIDERAIL

REVISED

ROADS

ASPHALT MULTI-USE FACILITY

CONCRETE SIDEWALK AND AMENITY AREAS

KENILWORTH ACCESS

MOUNTAIN BROW BLVD

1.2m DECORATIVE FENCE ADJACENT TO CONCRETE SIDEWALK (TYPICAL)

1.5m DECORATIVE FENCE ADJACENT TO MULTI-USE PATH (TYPICAL)

GUIDERAIL

MOUNTAIN BROW

UPPER OTTAWA

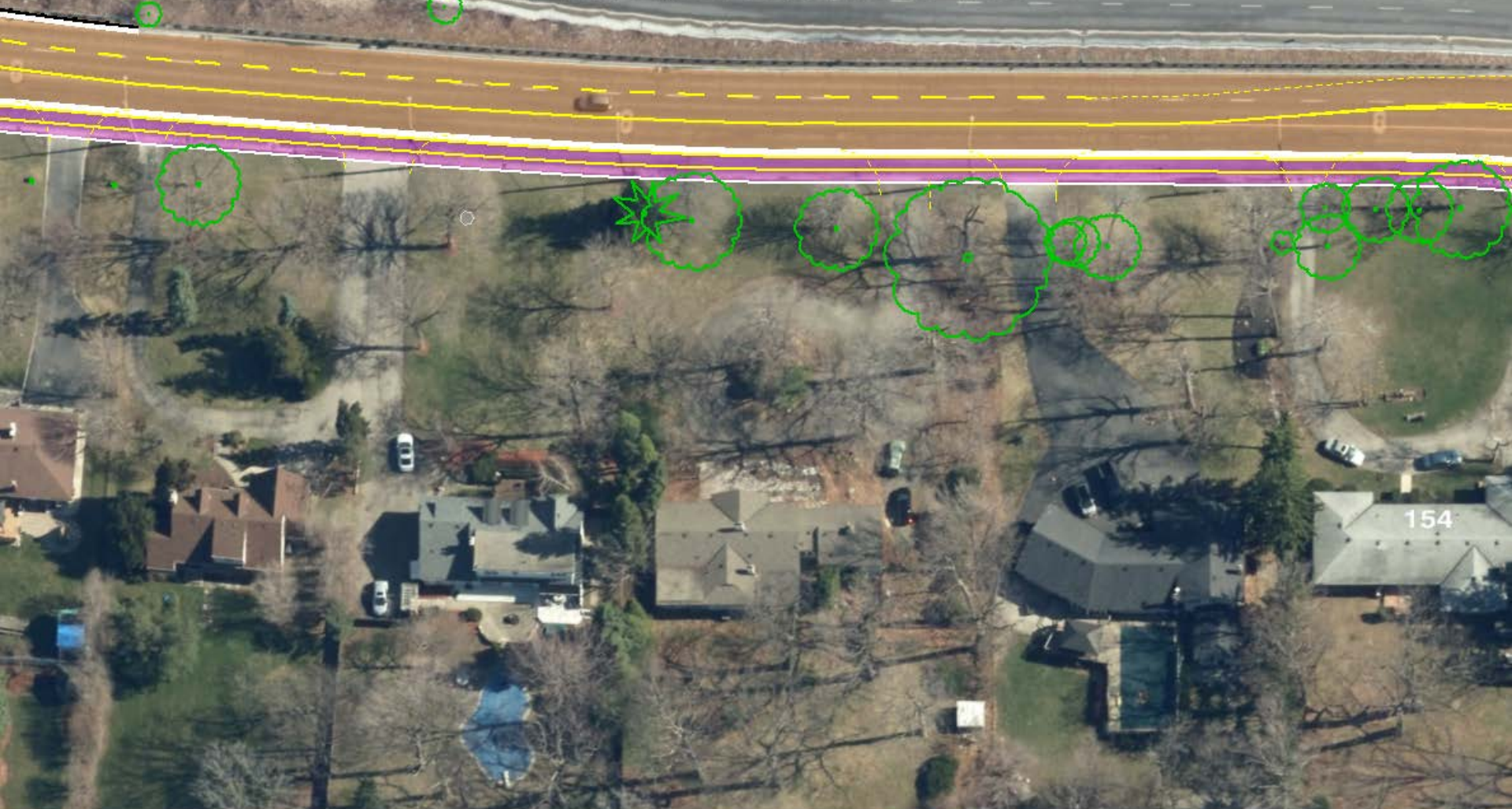
REVISED

ROADS

ASPHALT MULTI-USE FACILITY

CONCRETE SIDEWALK AND AMENITY AREAS

KENILWORTH ACCESS



ROADS

ASPHALT MULTI-USE AND CYCLING FACILITY

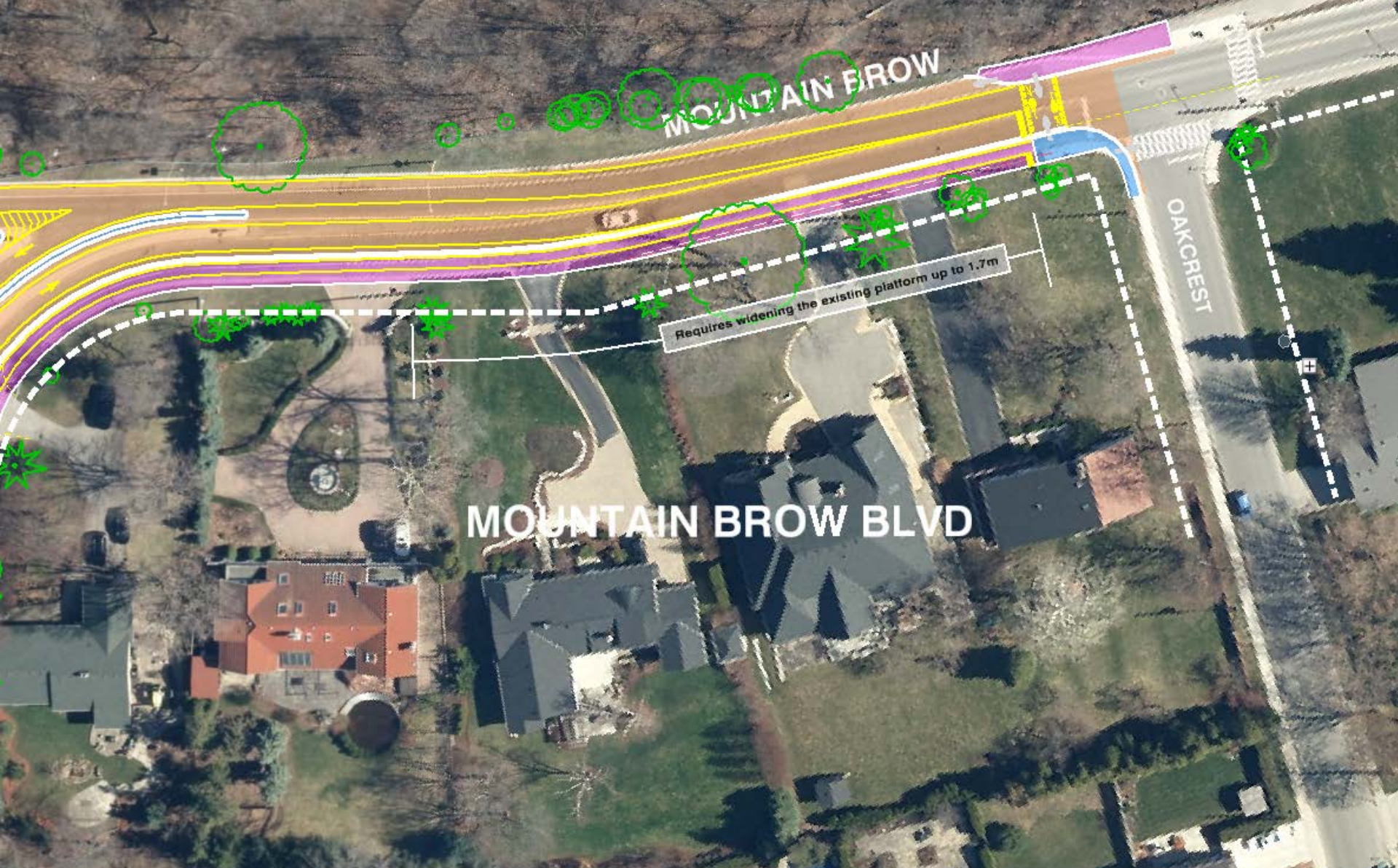
CONCRETE SIDEWALK AND AMENITY AREAS

KENILWORTH ACCESS

MOUNTAIN BROW BLVD

TREE REMOVAL

ROADS ASPHALT MULTI-USE AND CYCLING FACILITY CONCRETE SIDEWALK AND AMENITY AREAS



ROADS

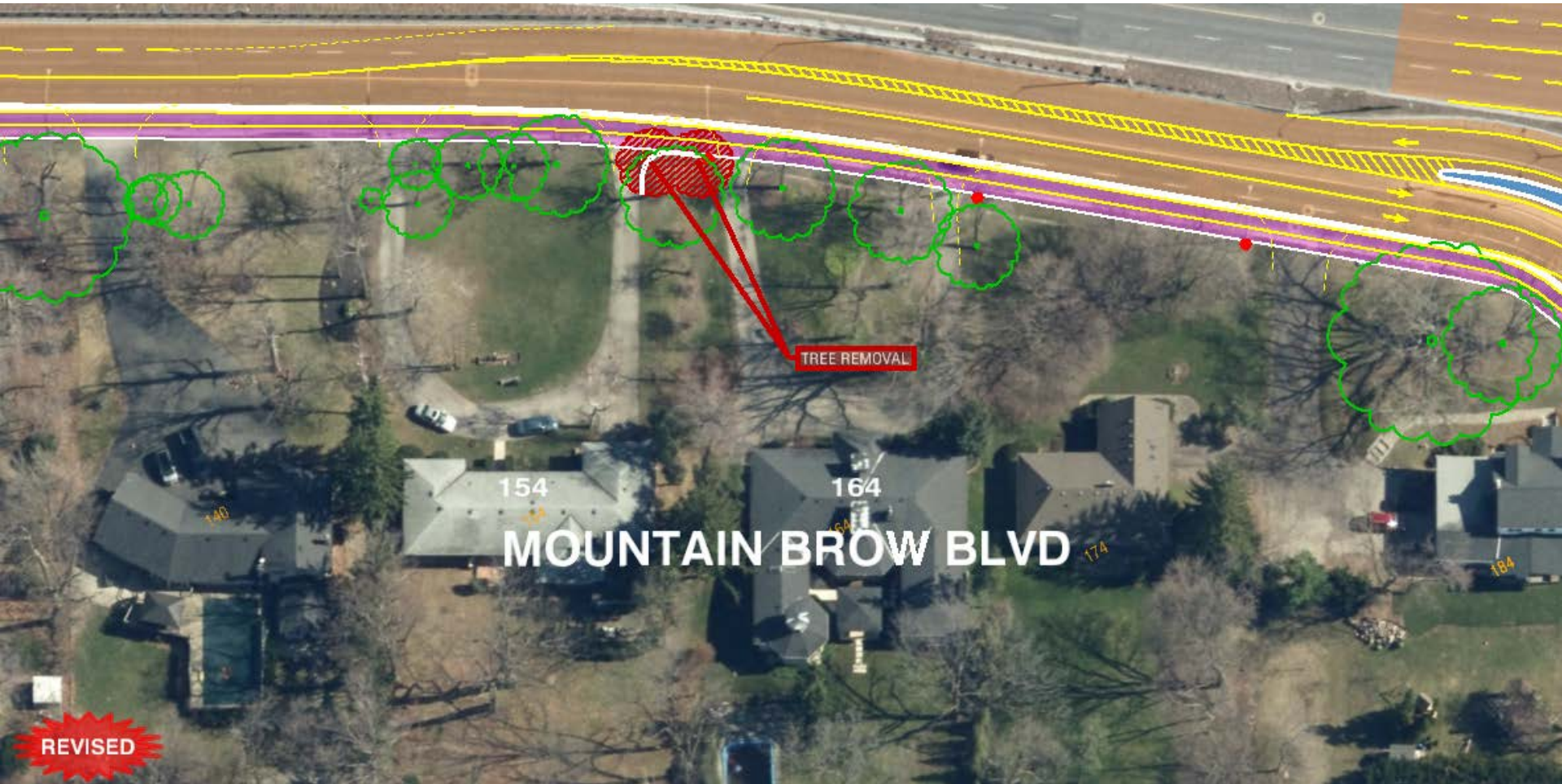
ASPHALT MULTI-USE AND CYCLING FACILITY

CONCRETE SIDEWALK AND AMENITY AREAS

Revised Tree Removals

Revised Tree Removals

Previously Identified Removals Avoided in Redesign



Multi-Use Path and Sidewalk Treatments

Adjacent to Mountain Drive Park (North Side)

Widen Boulevard and Plant Trees



Mountain Drive Park to Upper Ottawa (North Side)

Raised Multi-Use Path



South Side - Upper Ottawa to Oakcrest

Raised Multi-Use Path



Questions and Answers

Thank You for your Feedback

City of Hamilton Contact Information

Concession/Mountain Brow

Lin Dou

Lin.Dou@hamilton.ca

905-546-2424 ext. 2437