



Hamilton

1:300 OR AS SHOWN

L6



HAMILTON PIPELINE TRAIL MASTER PLAN

OCTOBER 2015



LEGEND

- PROPERTY LINE
- LONG TERM PIPELINE PATH OF TRAVEL
- SHORT TERM PIPELINE PATH OF TRAVEL
- EXISTING TREES TO REMAIN
- EXISTING TREES TO BE REMOVED
- PROPOSED TREE PLANTING
- PROPOSED SHRUB/ PERENNIAL PLANTING
- PROPOSED SEATING
- PROPOSED WAYFINDING ELEMENT
- PROPOSED PUBLIC ART
- PROPOSED WASTE RECEPTACLE
- ASPHALT PAVING
- CONCRETE PAVING
- PROPOSED PARKING SPACE REMOVAL
- TRAIL REALIGNMENT
- OPTICAL SPEED TABLE
- SHARROW
- SIGNED BIKE ROUTE
- BIKE LANE
- MIXED CROSSRIDE
- IPS PEDESTRIAN SIGNAL
- 100m TRAIL MARKER
- 1km TRAIL MARKER

A POTENTIAL ALTERNATE TRAIL ROUTE AND FAIRFIELD PARK CONNECTION
L6 1:500



Hamilton

1:300 OR AS SHOWN

L7



HAMILTON PIPELINE TRAIL MASTER PLAN

OCTOBER 2015



LEGEND

- PROPERTY LINE
- LONG TERM PIPELINE PATH OF TRAVEL
- SHORT TERM PIPELINE PATH OF TRAVEL
- EXISTING TREES TO REMAIN
- EXISTING TREES TO BE REMOVED
- PROPOSED TREE PLANTING
- PROPOSED SHRUB/ PERENNIAL PLANTING
- PROPOSED SEATING
- PROPOSED WAYFINDING ELEMENT
- PROPOSED PUBLIC ART
- PROPOSED WASTE RECEPTACLE
- ASPHALT PAVING
- CONCRETE PAVING
- PROPOSED PARKING SPACE REMOVAL
- TRAIL REALIGNMENT
- OPTICAL SPEED TABLE
- SHARROW
- SIGNED BIKE ROUTE
- BIKE LANE
- MIXED CROSSRIDE
- IPS PEDESTRIAN SIGNAL
- 100m TRAIL MARKER
- 1km TRAIL MARKER

A L7 POTENTIAL ALTERNATE TRAIL ROUTE - STRATHEARNE TO MAHONY PARK 1:500

0m 10m 20m 50m 100m



Hamilton

1:300 OR AS SHOWN

L8



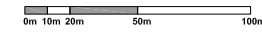
HAMILTON PIPELINE TRAIL MASTER PLAN

OCTOBER 2015

- LEGEND**
- PROPERTY LINE
 - LONG TERM PIPELINE PATH OF TRAVEL
 - SHORT TERM PIPELINE PATH OF TRAVEL
 - EXISTING TREES TO REMAIN
 - ⊗ EXISTING TREES TO BE REMOVED
 - PROPOSED TREE PLANTING
 - PROPOSED SHRUB/ PERENNIAL PLANTING
 - PROPOSED SEATING
 - ✳ PROPOSED WAYFINDING ELEMENT
 - PROPOSED PUBLIC ART
 - PROPOSED WASTE RECEPTACLE
 - ASPHALT PAVING
 - CONCRETE PAVING
 - PROPOSED PARKING SPACE REMOVAL
 - TRAIL REALIGNMENT
 - OPTICAL SPEED TABLE
 - SHARROW
 - SIGNED BIKE ROUTE
 - BIKE LANE
 - MIXED CROSSRIDE
 - IPS PEDESTRIAN SIGNAL
 - 100m TRAIL MARKER
 - 1km TRAIL MARKER



A MAHONY PARK
L8 1:500





Hamilton

1:300 OR AS SHOWN

L9



HAMILTON PIPELINE TRAIL MASTER PLAN

OCTOBER 2015

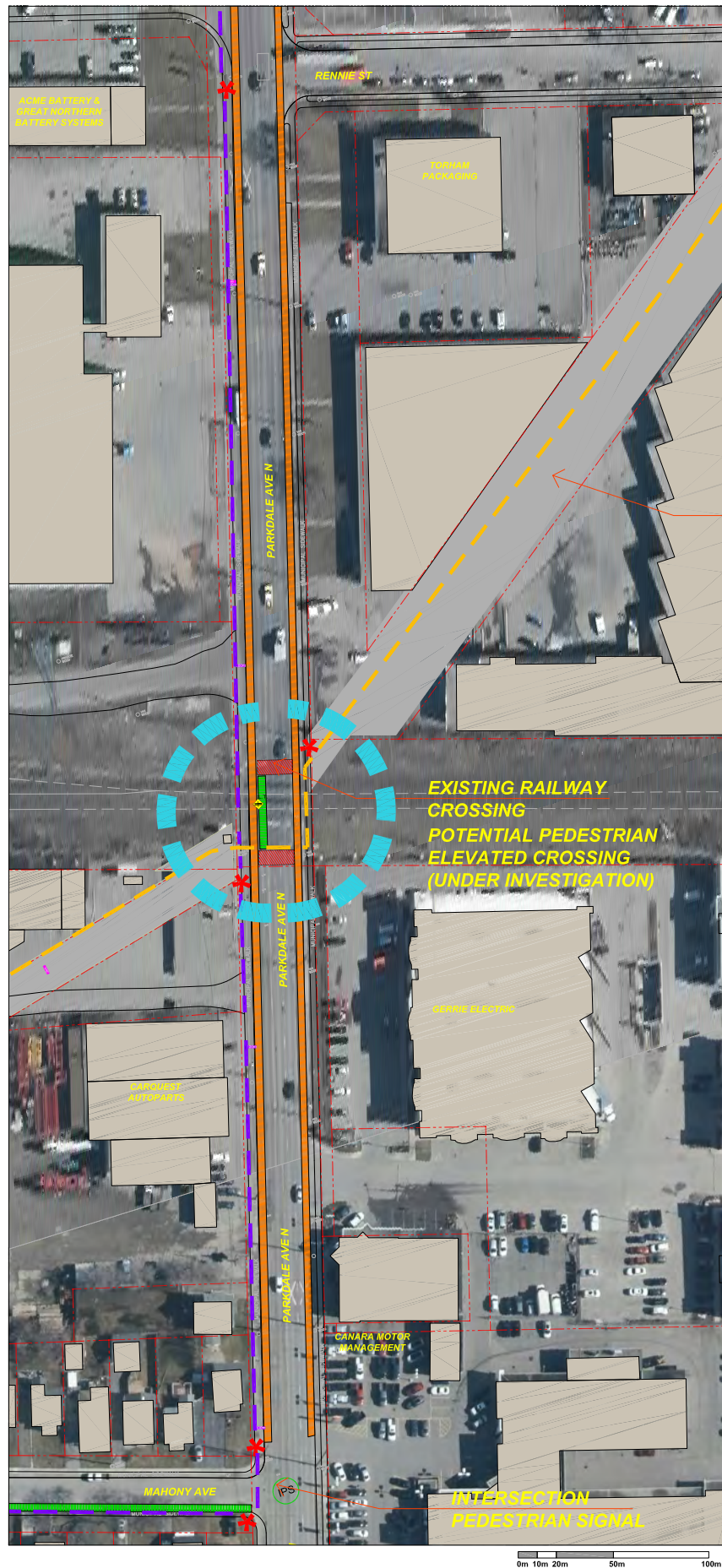


LEGEND

- PROPERTY LINE
- LONG TERM PIPELINE PATH OF TRAVEL
- SHORT TERM PIPELINE PATH OF TRAVEL
- EXISTING TREES TO REMAIN
- EXISTING TREES TO BE REMOVED
- PROPOSED TREE PLANTING
- PROPOSED SHRUB/ PERENNIAL PLANTING
- PROPOSED SEATING
- PROPOSED WAYFINDING ELEMENT
- PROPOSED PUBLIC ART
- PROPOSED WASTE RECEPTACLE
- ASPHALT PAVING
- CONCRETE PAVING
- PROPOSED PARKING SPACE REMOVAL
- TRAIL REALIGNMENT
- OPTICAL SPEED TABLE
- SHARROW
- SIGNED BIKE ROUTE
- BIKE LANE
- MIXED CROSSRIDE
- PEDESTRIAN SIGNAL
- 100m TRAIL MARKER
- 1km TRAIL MARKER

A MAHONY PARK, MOHONY AVE, PARKDALE AVE.
L9 1:500

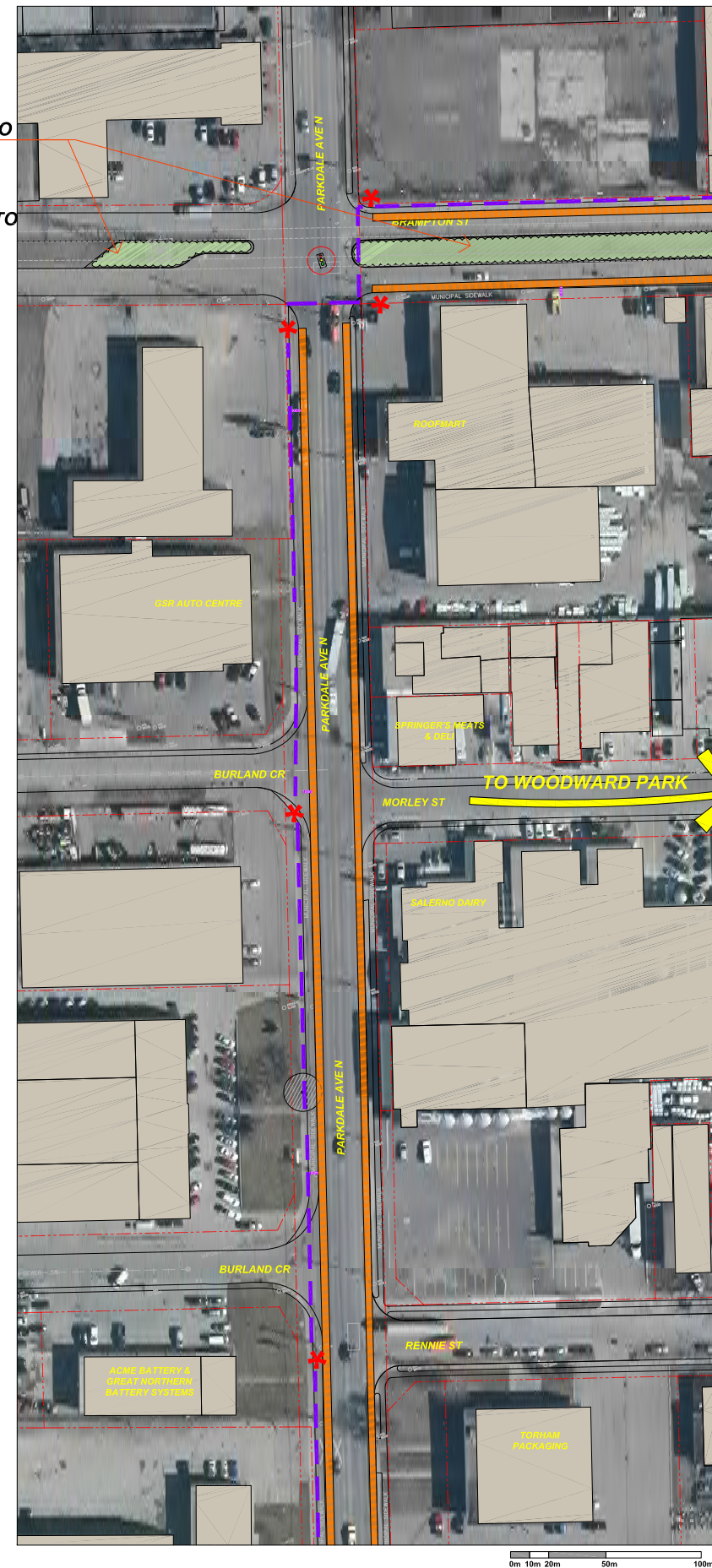




A PARKDALE AVE. N
L10 1:500

**INDUSTRIAL LANDS
CURRENTLY
INACCESSIBLE FOR
TRAIL DEVELOPMENT**

**BRAMPTON ST. HYDRO
EASEMENT.
POLLINATOR PLANTS
(MEADOW) FROM
STRATHEARNE AVE. TO
WOODWARD AVE.**



B PARKDALE AVE. N
L10 1:500



**HAMILTON PIPELINE
TRAIL MASTER PLAN**
OCTOBER 2015

LEGEND

- PROPERTY LINE
- LONG TERM PIPELINE PATH OF TRAVEL
- SHORT TERM PIPELINE PATH OF TRAVEL
- EXISTING TREES TO REMAIN
- ⊗ EXISTING TREES TO BE REMOVED
- PROPOSED TREE PLANTING
- PROPOSED SHRUB/ PERENNIAL PLANTING
- PROPOSED SEATING
- ⊗ PROPOSED WAYFINDING ELEMENT
- ⊗ PROPOSED PUBLIC ART
- ⊗ PROPOSED WASTE RECEPTACLE
- ASPHALT PAVING
- CONCRETE PAVING
- PROPOSED PARKING SPACE REMOVAL
- TRAIL REALIGNMENT
- OPTICAL SPEED TABLE
- SHARROW
- SIGNED BIKE ROUTE
- BIKE LANE
- MIXED CROSSRIDE
- IPS PEDESTRIAN SIGNAL
- 100m TRAIL MARKER
- 1km TRAIL MARKER



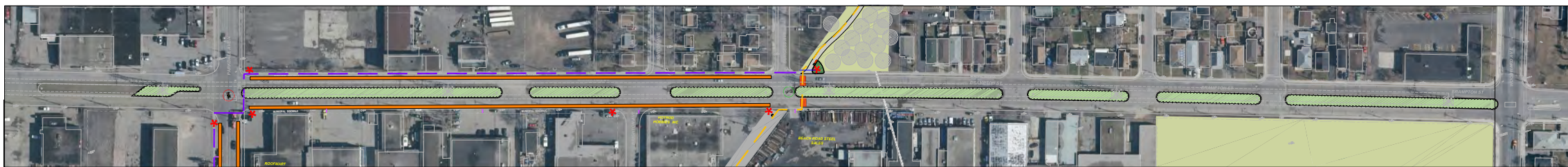
Hamilton

1:300 OR AS SHOWN

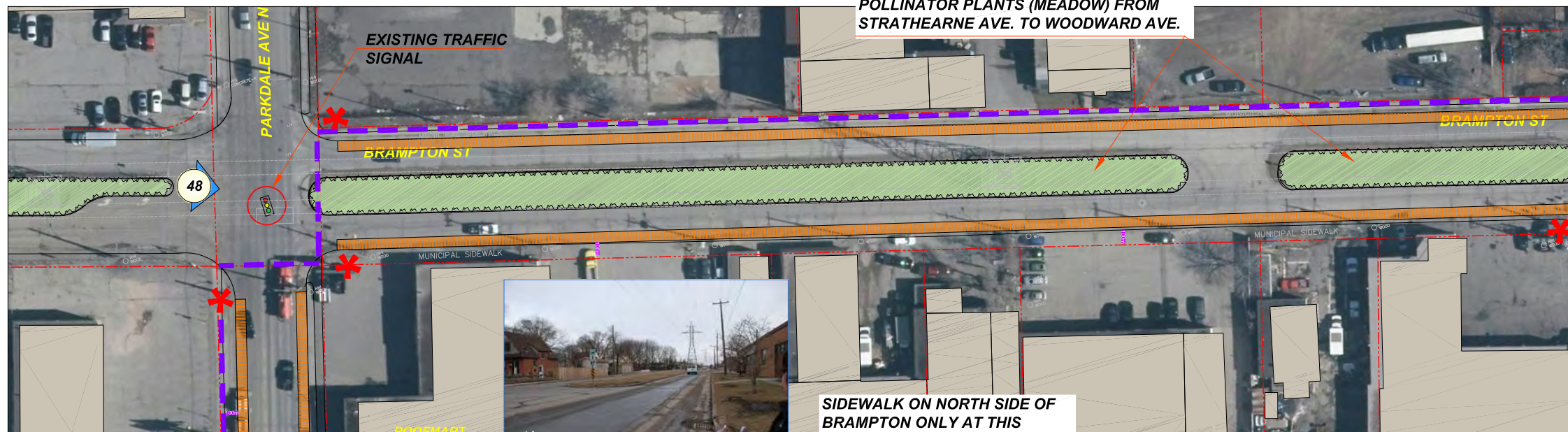
L11



HAMILTON PIPELINE TRAIL MASTER PLAN
OCTOBER 2015



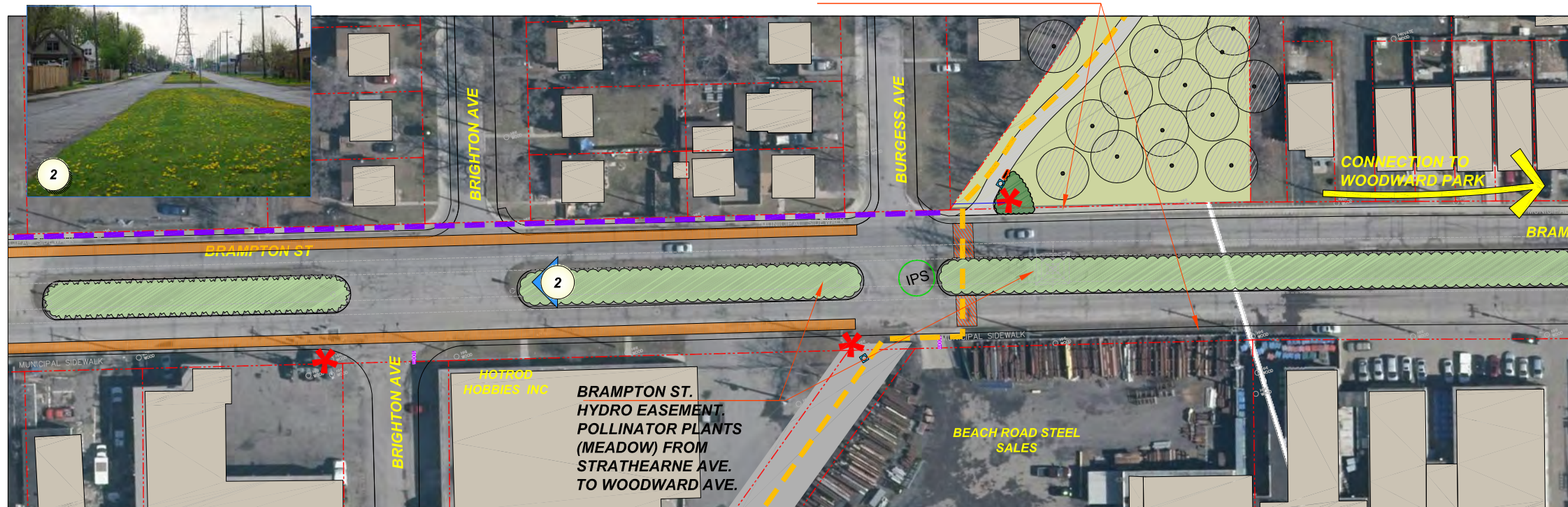
EXTENTS OF POLLINATOR GARDEN ON BRAMPTON ST.
FROM STRATHEARNE AVE. TO WOODWARD AVE.



BRAMPTON ST. HYDRO EASEMENT.
POLLINATOR PLANTS (MEADOW) FROM
STRATHEARNE AVE. TO WOODWARD AVE.

SIDEWALK ON NORTH SIDE OF
BRAMPTON ONLY AT THIS
LOCATION.
EXISTING SIDEWALK ON SOUTH
SIDE ALONG PARK FRONTAGE.

A BRAMPTON ST.
1:300



BRAMPTON ST.
HYDRO EASEMENT.
POLLINATOR PLANTS
(MEADOW) FROM
STRATHEARNE AVE.
TO WOODWARD AVE.

CONNECTION TO
WOODWARD PARK

B BRAMPTON ST., BRIGHTON AVE TO BURGESS AVE.
1:300

- LEGEND
- PROPERTY LINE
 - LONG TERM PIPELINE PATH OF TRAVEL
 - SHORT TERM PIPELINE PATH OF TRAVEL
 - EXISTING TREES TO REMAIN
 - ⊗ EXISTING TREES TO BE REMOVED
 - PROPOSED TREE PLANTING
 - PROPOSED SHRUB/ PERENNIAL PLANTING
 - PROPOSED SEATING
 - ✳ PROPOSED WAYFINDING ELEMENT
 - PROPOSED PUBLIC ART
 - PROPOSED WASTE RECEPTACLE
 - ASPHALT PAVING
 - CONCRETE PAVING
 - PROPOSED PARKING SPACE REMOVAL
 - TRAIL REALIGNMENT
 - OPTICAL SPEED TABLE
 - SHARROW
 - SIGNED BIKE ROUTE
 - BIKE LANE
 - MIXED CROSSRIDE
 - IPS PEDESTRIAN SIGNAL
 - 100m TRAIL MARKER
 - 1km TRAIL MARKER