

APPENDIX D
Public and Agency Consultation

NOTICES



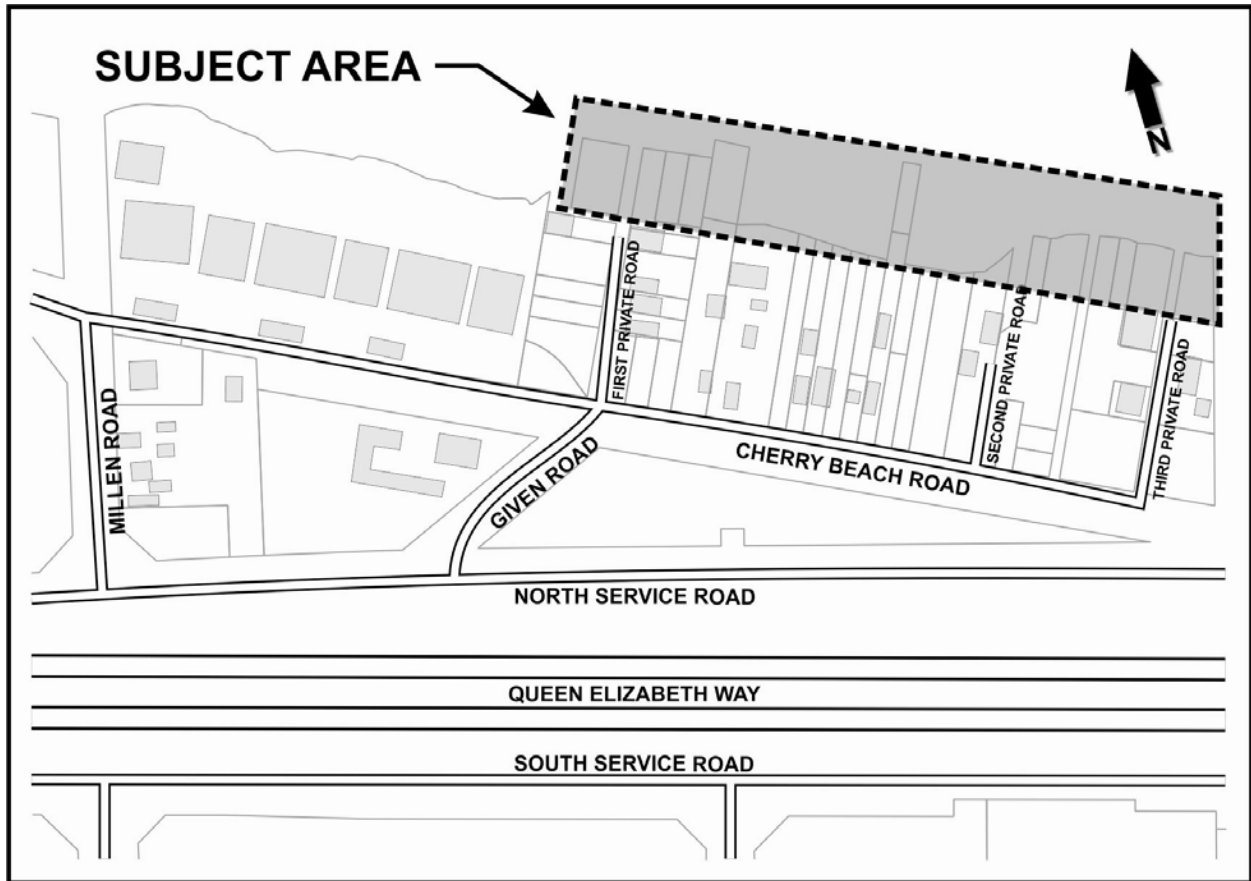
Hamilton
Public Works

NOTICE OF STUDY COMMENCEMENT & PUBLIC INFORMATION CENTRE

CHERRY BEACH SHORELINE PROTECTION MUNICIPAL CLASS ENVIRONMENTAL ASSESSMENT

The City of Hamilton by way of this notice is announcing commencement of this study and is inviting public input and comment. A **Public Information Centre** will be held:

DATE: May 3, 2012
TIME: 6:30 p.m. to 8:30 p.m.
LOCATION: Our Lady of Peace
Catholic Elementary School
252 Dewitt Rd, Stoney Creek, ON L8E 2R1



THE PROCESS

The study is being conducted as a Schedule B project and is intended to satisfy Phases 1 and 2 of the Municipal Engineers Association's (MEA's) Class Environmental Assessment (Class EA) process. This will involve a process of problem/opportunity identification, evaluation of alternative solutions, and selection of a preferred solution. Stakeholder consultation is an important part of the EA process, and a key component of the study.

THE STUDY

Cherry Beach is located in the Stoney Creek lower end neighbourhood on Lake Ontario, east of Millen Road. The study area, as shown on the accompanying map, is bounded by Lake Ontario to the north, North Service Road to the south, runs from west of 1 Private Road to east of 3 Private Road. The study area consists of publicly owned lands and of residences, many of which were former cottages. More recent residential developments are located adjacent to the study area to the east and west. The City of Hamilton is interested in creating a park/open space in the area.

Previous shoreline engineering assessment identified high erosion rates and a very steep bank with no established vegetation. As a result of the review, the City has initiated this Class EA process to further examine the potential effects on property or lands that may be unsafe for development and to identify appropriate erosion mitigation measures and a preferred conceptual design.

PUBLIC INFORMATION CENTRE

A Public Information Centre will be held to present the Phase 1 and Phase 2 findings for Cherry Beach Shoreline Protection Infrastructure Municipal Class EA Study. The intent of the public consultation is to present the findings to date and to obtain feedback and public input into the evaluation and selection of alternative solutions.

PUBLIC COMMENTS INVITED

Questions or comments about the study can be directed to the attention of the Project Managers:

Chris Gainham
Senior Project Manager
Environment & Sustainable Infrastructure
Division, Public Works Department
City of Hamilton
400-77 James St. North
Hamilton, ON L8R 2K3
P: 905.546.2424 Ext. 3421
F: 905.546.4491
Christopher.Gainham@hamilton.ca

Grace Tesa, P. Eng.
Project Manager
Dillon Consulting Ltd
235 Yorkland Blvd Suite 800
Toronto, ON M2J 4V8
P: 416.229.4647 ext.2344
F: 416.229.4692
GTesa@dillon.ca

Please contact the City Project Manager regarding disability accommodation requirements.

Information will be collected in accordance with the *Freedom of Information and Protection of Privacy Act*. With the exception of personal information, all comments will become part of the public record.

This Notice Issued April 20 & 27, 2012

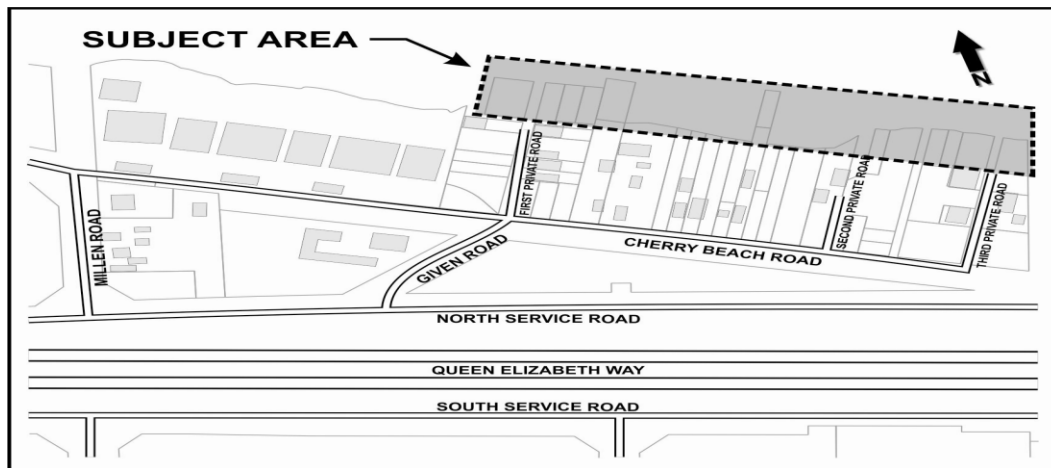


Hamilton
Public Works

**NOTICE OF COMPLETION
CHERRY BEACH SHORELINE PROTECTION
INFRASTRUCTURE CLASS ENVIRONMENTAL ASSESSMENT**

THE STUDY





The City of Hamilton has completed a Schedule B, Class Environmental Assessment to identify the recommended alternative solution for protecting the Cherry Beach Shoreline located in Stoney Creek on Lake Ontario, east of Millen Road. The study was conducted in accordance with the requirements for Schedule B projects as described in the Municipal Engineers Association’s *Municipal Class Environmental Assessment* document (as amended in 2011). Previous shoreline engineering assessment identified high erosion rates and a very steep bank with no established vegetation. The current study and the public consultation process identified constructing a new revetment along the Cherry Beach Shoreline as the preferred alternative solution. The revetment will be a two layer structure consisting of armour stones overlaying a layer of rip rap.



PUBLIC REVIEW PERIOD

A Project File Report (PFR) describing the planning process followed and the conclusions is now available for the 30-day public review period. The Report will be available from September 15, 2014 through October 15, 2014. Subject to comments received as a result of this Notice and receipt of necessary approvals, the City of Hamilton intends to proceed to the design and construction phases as outlined in the Project File Report.

The Project File Report is available for review at the following locations:

Locations	Office of the City Clerk 71 Main Street West City Hall, 1 st Floor Hamilton, ON, L89 4Y5 	City Centre Public Works Department 77 James Street North, Suite 400, Hamilton, ON L8R 2K3 	Hamilton Public Library (Stoney Creek Branch) 777 Highway8 Stoney Creek, ON L8E 5J4 	City Website http://www.hamilton.ca/CityDepartments/PublicWorks/Environment+Sustainable+Infrastructure/StrategicPlanning/StrategicEnvironmentalPlanningProjects/Cherry+Beach+Shoreline.htm 
Telephone	(905) 546-CITY		(905) 643-2912	
Working Hours	8:30 a.m. to 4:30 p.m.		Call or Check at http://www.hpl.ca	

Please contact the City Project Manager regarding disability accommodation requirements as soon as possible.

PUBLIC COMMENT PROCESS

If after reviewing the document, you have questions or concerns please follow this procedure:

1. Contact the following staff to discuss your questions or concerns:

Bhajan Sarker, P.Eng Project Manager Infrastructure Planning and Systems Design Hamilton Water Division Public Works Department City of Hamilton 400-77 James St. North Hamilton, ON L8R 2K3 Phone: (905)546-2424 Ext. 5109 Fax: (905)546-4491 Email: bhajan.sarker@hamilton.ca	Grace Tesa, P.Eng Project Manager Associate, Dillon Consulting Limited 235 Yorkland Blvd, Suite 800 Toronto, ON M2J 4V8 Phone: (416) 229-4647 Ext. 2344 Fax: (416) 229-4692 Email: gtesa@dillon.ca
--	--

2. Arrange a meeting with the above if you have significant concerns that may require more detailed explanation.
3. If you raise major concerns, the City will attempt to negotiate a resolution of the issues. A mutually acceptable time period for this negotiation will be set. If the issues remain unresolved, you may request the Minister of the Environment and Climate Change, by order, to require the City to comply with Part II of the Environmental Assessment Act before proceeding with the project.

Requests must be submitted in writing to the Minister of the Environment and Climate Change within the 30-day review period (by October 15, 2014):

Minister of the Environment and Climate Change
77 Wellesley Street West, 11th Floor, Ferguson Block
Toronto, ON M7A 2T5

A copy of the letter must also be sent to the City of Hamilton, to the attention of the Project Manager (address above).

Information will be collected in accordance with the *Freedom of Information and Protection of Privacy Act*. With the exception of personal information, all comments will become part of the public record.

This Notice Issued September 11 & 18, 2014.

PIC PRESENTATION

Welcome

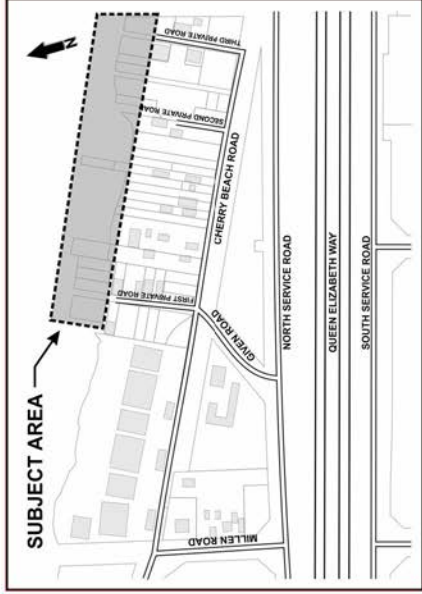
Cherry Beach Shoreline Protection Infrastructure Conceptual Design and Class EA
Public Information Centre
Date: May 3, 2012

Cherry Beach Shoreline Protection Infrastructure Conceptual Design and Class EA

Public Information Centre

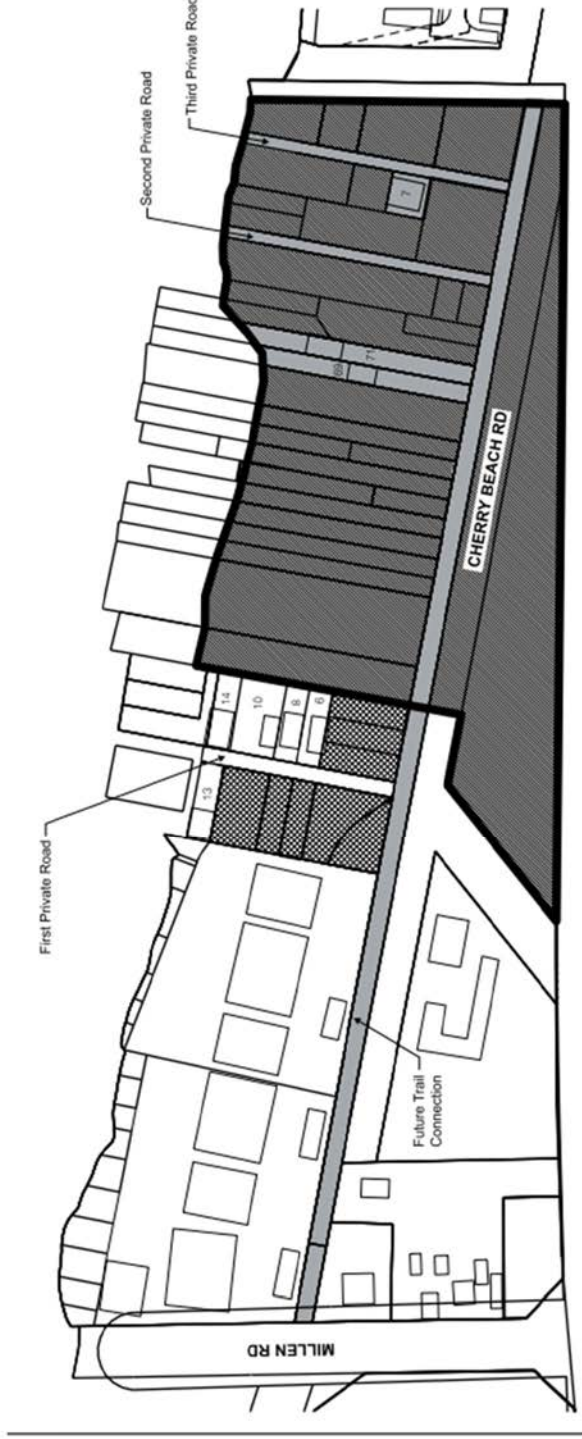
May 3, 2012

Study Area



- Cherry Beach neighbourhood is located in lower Stoney Creek on Lake Ontario, east of Millen Road.
- The study area is bounded by Lake Ontario to the north, Cherry Beach Road to the south and runs from west of 1 Private Road to east of 3 Private Road.

Core Area (City Owned Lands) - 2.77 ha (6.84 acres)
 City Owned Lands Outside Core Area - 0.29 ha (0.73 acres)
 Lands to be Acquired - 0.60 ha (1.48 acres)



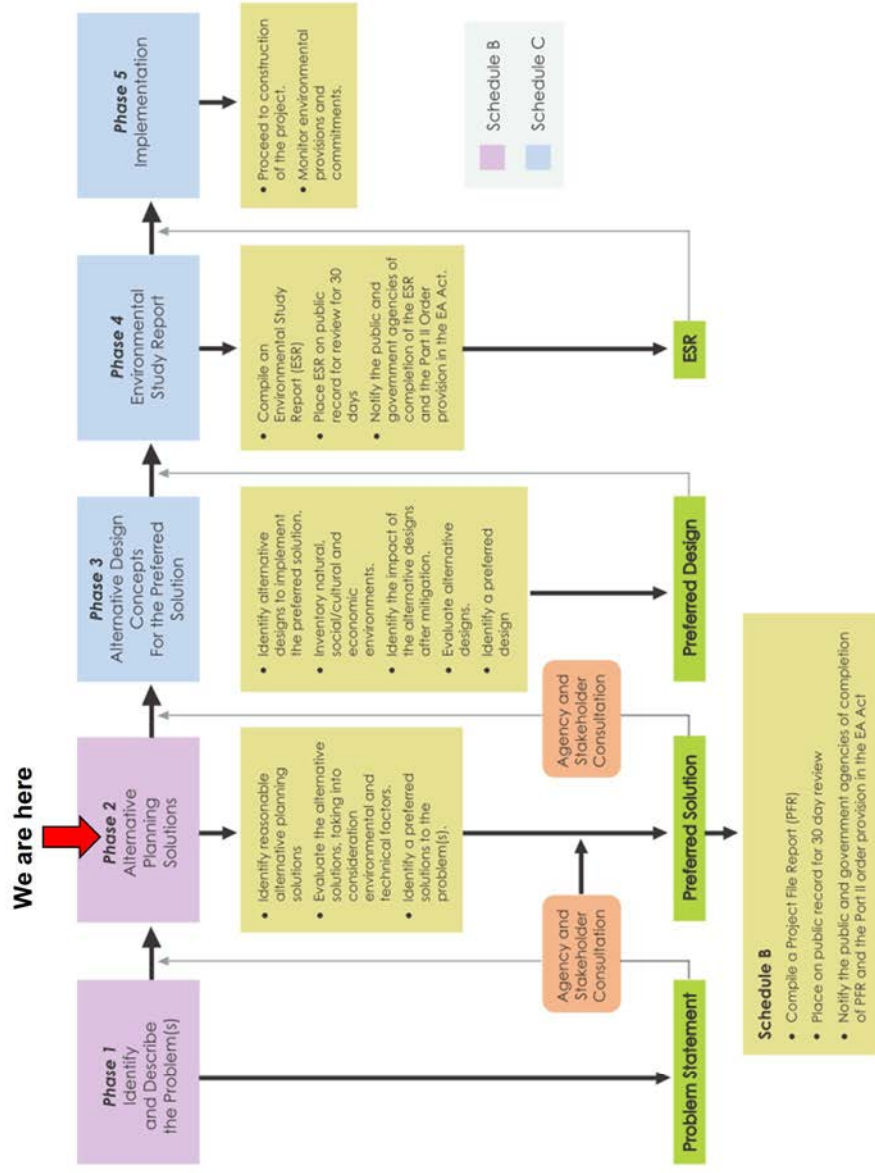
The Municipal Class EA Process

Municipal infrastructure is planned using the Class Environmental Assessment process. Key steps in the process for Cherry Beach shoreline infrastructure improvements include:

- Phase 1 – Determining the problem/opportunity
- Phase 2 – Identifying and evaluating alternative ways to protect the shoreline. The preliminary preferred alternatives are presented at this PIC for public input.

If it is determined that the recommended alternative is defined as a Schedule B project under the Class EA, a Project File report will be prepared for public review and comment.

If the recommended alternative is defined as a Schedule C project, Phases 3 and 4 will be completed.



Existing Conditions – Land Use



- Mixed Land Use
- Mainly vacant lands
- Predominantly City owned properties

Existing Conditions – Terrestrial Environment



- Endangered Species Act screening report submitted to agencies identifying natural features (Area of Natural and Scientific Interest, Environmentally Sensitive Areas, etc.) and Species at Risk (SAR)
- Field work included tree inventory, botanical survey, Ecological Land Classification, incidental wildlife observations
- Data sources including Natural Heritage Information Centre database, Land Information Ontario mapping, City Official Plan schedules and forestry mapping
- Predominantly vacant urban lands undergoing succession
- Marginal habitat for two SAR: Eastern Milksnake and Chimney Swift

Existing Conditions – Aquatic Environment



- Endangered Species Act screening report submitted to agencies identifying natural features (Area of Natural and Scientific Interest, Environmentally Sensitive Areas, etc.) and Species at Risk (SAR)
- Field work included incidental wildlife observations and aquatic habitat assessment
- Data sources including Natural Heritage Information Centre database, Land Information Ontario mapping, City Official Plan schedules, Department of Fisheries and Ocean Fish and Mussel Mapping
- No records of aquatic SAR with the potential to occur in the study area
- No critically limiting aquatic features; suitable habitat for baitfish and foraging habitat for predatory species

Existing Conditions – Shoreline



View of the East end of Site, Looking East



View of Eroding Bank in Eastern Part of Site, Looking West



View of Rubble and Armour Stone in Central Part of Site, Looking West



View of the West End of Site, Looking West

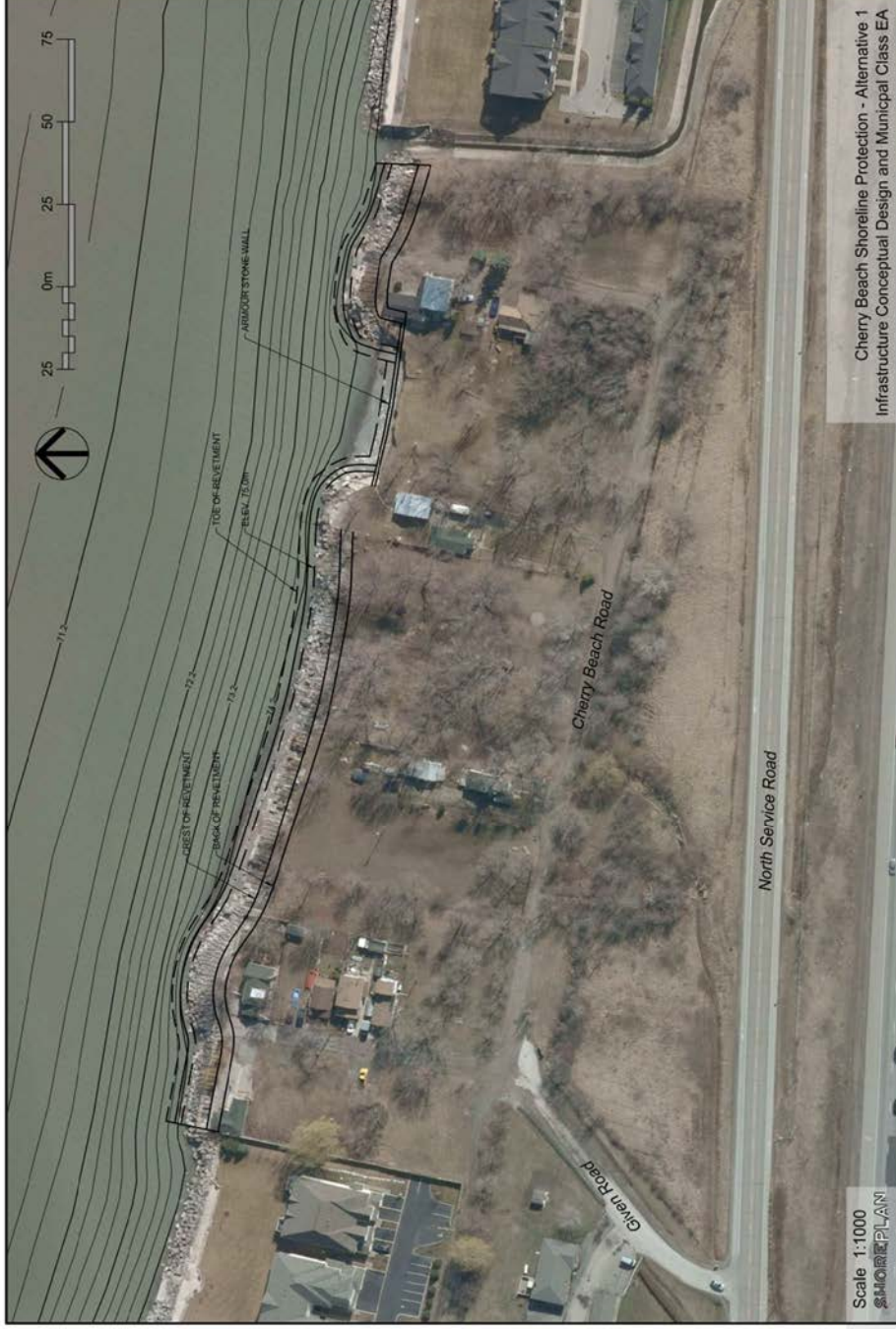
Existing Conditions – Shoreline Erosion Hazard



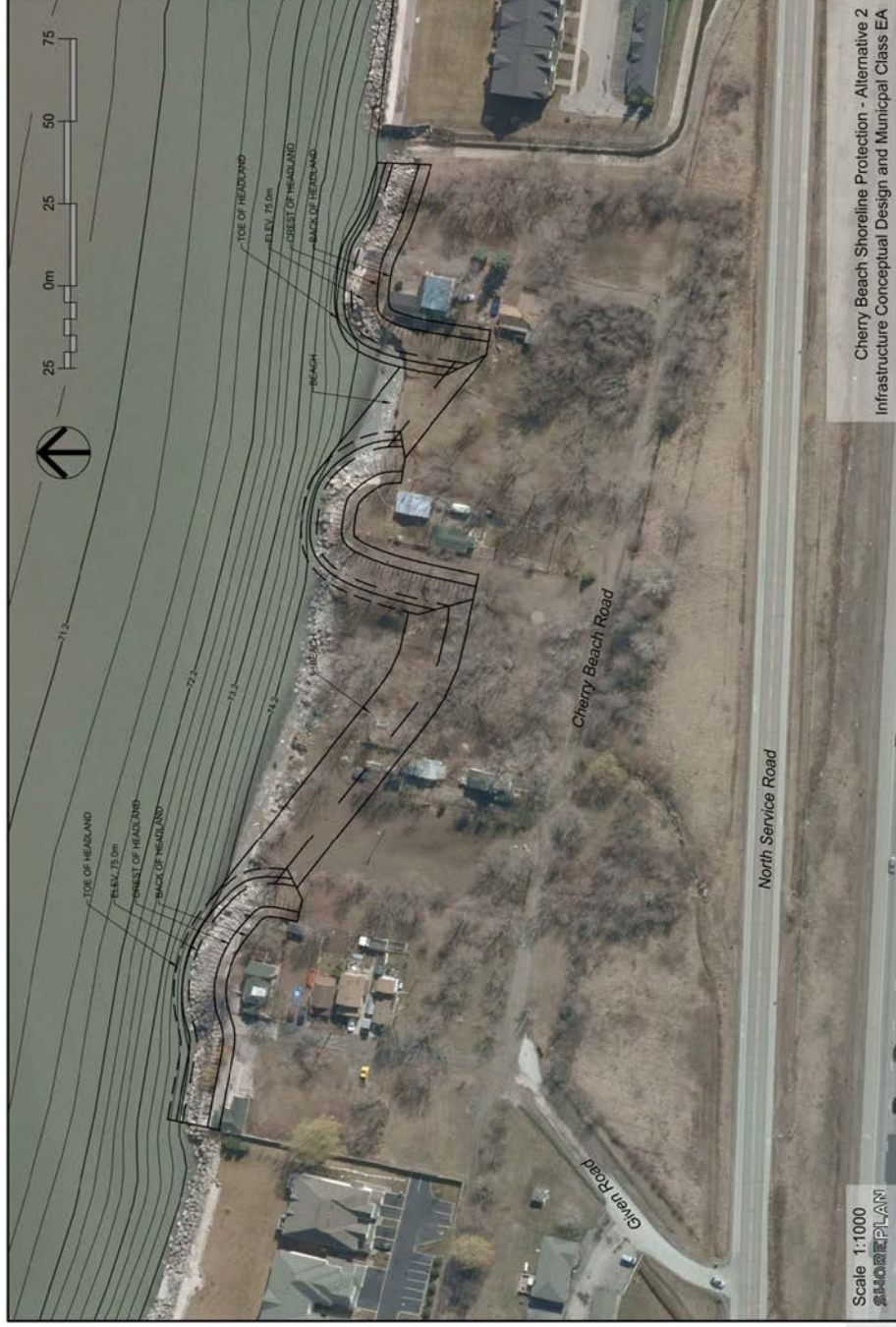
Problem and Opportunity Statement

The Cherry Beach shoreline is being subject to naturally occurring erosion processes that are effecting property and lands and limiting the development potential of the area. Parkland/open space is planned for the area and erosion mitigation measures may be required to stabilize the area for future use and development, and to provide an opportunity to enhance those uses.

Alternative Concept 1 – Revetment



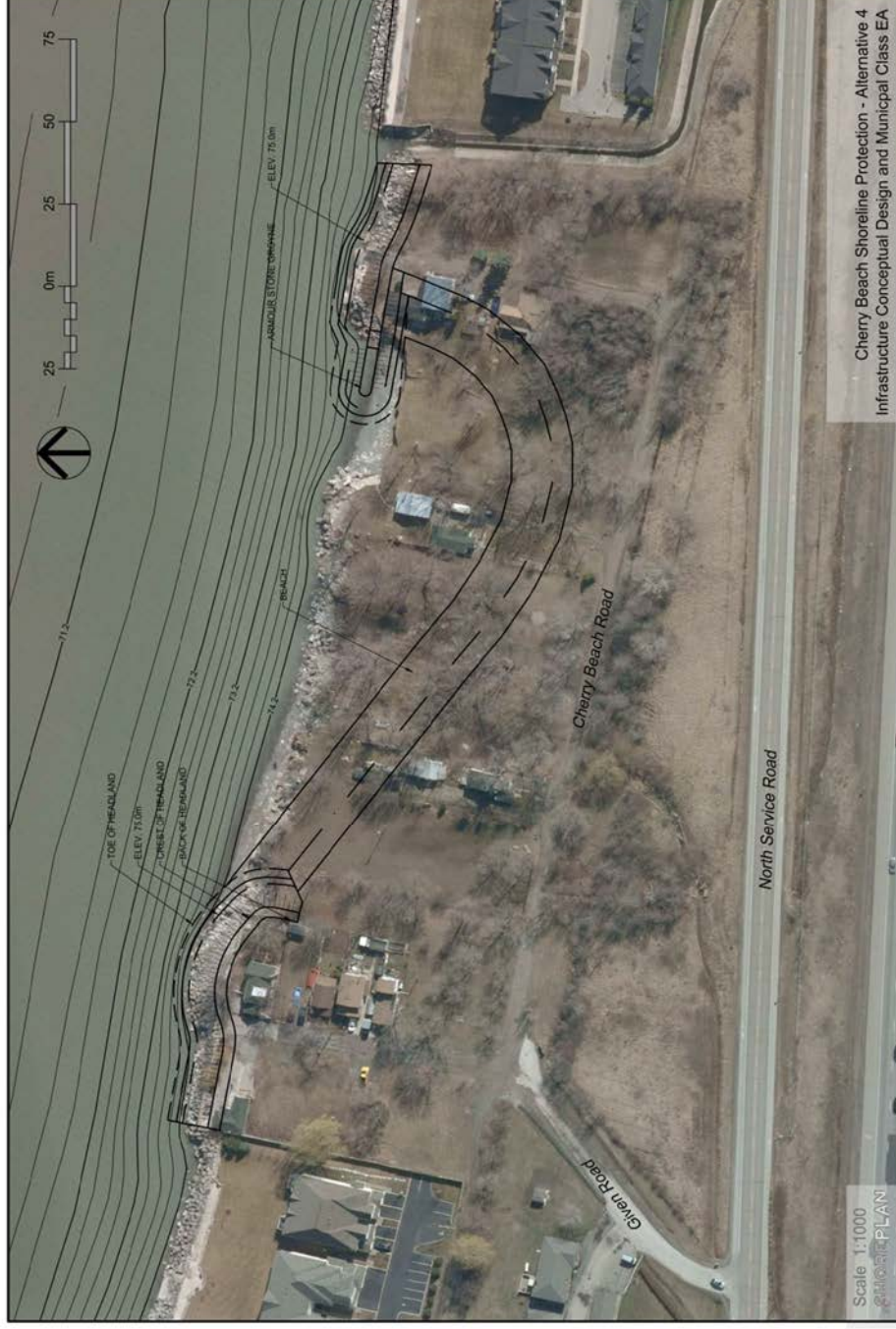
Alternative Concept 2 – Three Headlands, Two Beach Cells



Alternative Concept 3 – Two Groynes, Headland, One Beach Cell



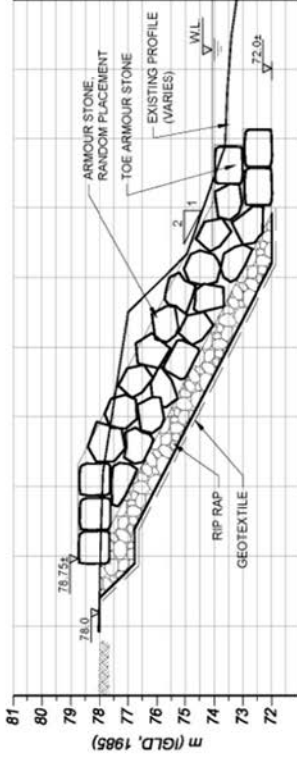
Alternative Concept 4 – One Groyne, Headland, One Beach Cell



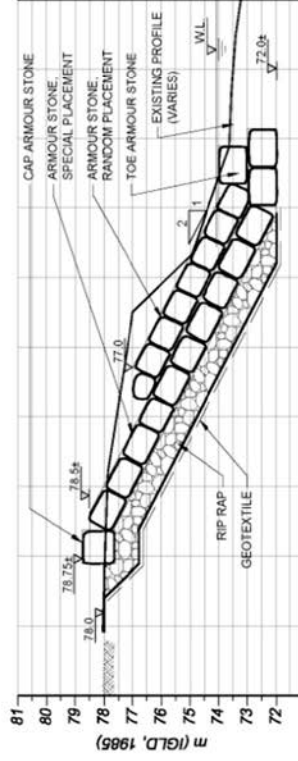
Alternative Concept 5 – Three Long Groynes, Two Beach Cells



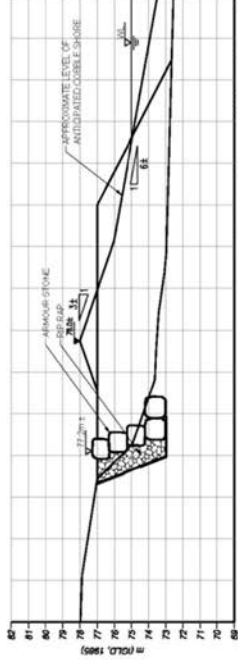
Alternatives – Preliminary Details



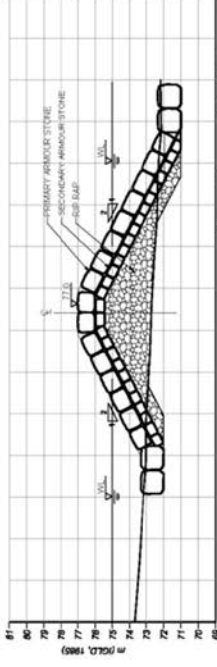
Armour Stone Revetment (Random Placement)



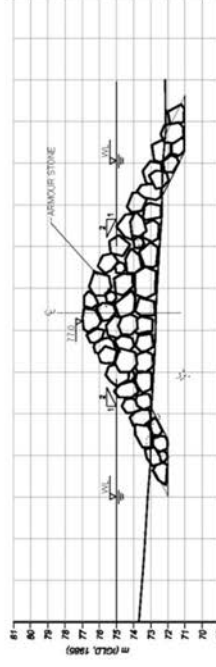
Armour Stone Revetment (Special Placement)



Armour Stone Wall and Beach



Armour Stone Groyne (Double Layer)



Armour Stone Groyne (Random Placement)

Evaluation Matrix

Criteria	Alternative 1 Revetment	Alternative 2 Three Headlands Two Beach Cells	Alternative 3 Two Groynes and Headland One Beach Cell	Alternative 4 One Groyne and Headland One Beach	Alternative 5 Three LONG Groynes Two Beach Cells
NATURAL ENVIRONMENT					
Aquatic Habitat	-	-	X	X	X
Habitat Linkages	-	-	-	-	-
Terrestrial Habitat	✓	-	-	-	✓
Vegetation	✓	-	X	X	✓
SOCIO-ECONOMIC & CULTURAL ENVIRONMENT					
Maximize available parkland and recreational opportunities	✓	✓	X	X	✓
Access to water	-	✓	✓	✓	✓
Appearance	-	✓	✓	X	X
Capital cost	-	-	-	-	-
Maintenance cost	-	-	-	-	X
Historic and cultural features or resources	✓	X	X	X	✓
Impact on adjacent property	-	-	-	-	X
Public safety	✓	✓	✓	✓	✓
Views and vistas	-	✓	✓	✓	X

✓ Represents a positive impact X Represents a negative impact - Represents neither a positive nor negative impact (neutral)

Evaluation Matrix

Criteria	Alternative 1 Revetment	Alternative 2 Three Headlands Two Beach Cells	Alternative 3 Two Groynes and Headland One Beach Cell	Alternative 4 One Groyne and Headland One Beach	Alternative 5 Three LONG Groynes Two Beach Cells
PHYSICAL CONSIDERATIONS					
Littoral drift	X	X	X	X	X
Other coastal processes	-	✓	-	-	✓
Surface drainage	-	-	-	-	-
Unique landforms	-	-	-	-	-
Uprift/downdrift impacts	-	-	-	-	-
Water quality and circulation	-	X	X	X	X
TECHNICAL AND ENGINEERING					
Erosion mitigation	✓	✓	✓	✓	✓
Existing structures and infrastructure	-	-	-	-	-
Risk to life and property	✓	✓	✓	✓	✓
Scheduling (phasing and implementation)	✓	✓	X	X	✓
OVERALL EVALUATION					
	Equally Preferred	Equally Preferred	Equally Preferred	Least Preferred	Least Preferred

✓ Represents a positive impact
 X Represents a negative impact
 - Represents neither a positive nor negative impact (neutral)

Preliminary Preferred Alternatives

- Based on the evaluation, three alternatives, Concepts 1, 2 and 3 have been identified as equally preferred. Two alternatives, Concepts 4 and 5, were identified as least preferred.
- Cost was not a key factor in determining the preliminary preferred alternative
- Each of the three preliminary preferred alternatives have benefits over the other depending on the ultimate land ownership scenario as follows:
 - Concept 1 – Private roads and remaining desired residential properties in the study area cannot be purchased.
 - Concept 2 – Private roads are purchased by the City but the remaining desired residential properties are not.
 - Concept 3 – Private roads and all remaining desired residential properties are purchased by the City.

Next Steps

- After comments have been considered, the preferred recommended alternative will be identified and the Municipal Class EA schedule under which it falls is confirmed.
- If the recommended alternative is Schedule B:
 - A Project File report will be prepared and made available for public comment including the opportunity to request a Part II Order under the Environmental Assessment Act to elevate the project to an individual EA
 - If no Part II Orders received, the project will proceed to implementation.
- If the recommended alternative is Schedule C, Phases 3 and 4 of the Class EA will be completed as follows:
 - Phase 3 – Alternative design concepts will be identified and evaluated for the preferred alternative and additional consultation will take place.
 - Phase 4 – An Environmental Study Report will be completed and made available for public comment including the opportunity to request a Part II Order. If no Part II Orders are received, the project will proceed to implementation.

Thank You for Attending Tonight

Before you leave:

- Please take handouts from the information table
- Sign the attendance sheet
- Ask any questions you may have about this project
(*just look for someone with a nametag*)

We would like to hear from you!

- Comment sheets are available at the sign in table. Please fill in your thoughts, ideas, concerns, and questions about this project.
- If you would like to be included in our mailing list please leave us with the necessary information on the comment sheet and/or sign-in sheet.

Contact Information

Bhajan Sarker, P. Eng.
Project Manager

Environmental & Sustainable
Infrastructure Division, Public
Works Department
City of Hamilton

400-77 James St. North

Hamilton, ON L8R 2K3

P: (905) 546-2424 ext. 5109

F: (906) 546-4491

Bhajan.sarker@hamilton.ca

Grace Tesa, P. Eng.
Project Manager

Dillon Consulting Ltd

235 Yorkland Blvd Suite 800

Toronto, ON M2J 4V8

P: (416) 229-4647 ext. 2344

F: (416) 229-4692

Gtesa@dillon.ca



STAKEHOLDER MEETINGS

**CITY OF HAMILTON
CHERRY BEACH SHORELINE PROTECTION INFRASTRUCTURE
CONCEPTUAL DESIGN AND CLASS EA**

STAKEHOLDER MEETING AGENDA

DATE: Thursday, June 26, 2014

TIME: 5:00 p.m.

LOCATION: Council Chambers, Stoney Creek Municipal Building

PURPOSE: Stakeholder Meeting – Condominium Associations

AGENDA ITEMS

1. Introductions
2. Updated Project Overview
3. Selection of the Preferred Alternative
4. Next Steps
5. Other Business

DILLON CONSULTING LIMITED
TORONTO, ONTARIO

File: 12-5934

Distribution:
Project Team Contact List

**CITY OF HAMILTON
CHERRY BEACH SHORELINE PROTECTION INFRASTRUCTURE
CONCEPTUAL DESIGN AND CLASS EA**

STAKEHOLDER MEETING AGENDA

DATE: Thursday, June 26, 2014

TIME: 7:00 p.m.

LOCATION: Council Chambers, Stoney Creek Municipal Building

PURPOSE: Stakeholder Meeting – Landowners

AGENDA ITEMS

1. Introductions
2. Updated Project Overview
3. Selection of the Preferred Alternative
4. Next Steps
5. Other Business

DILLON CONSULTING LIMITED
TORONTO, ONTARIO

File: 12-5934

Distribution:
Project Team Contact List

KEY DATES

Summer 2014	Meeting with local stakeholders to provide updated project overview and selection of the preferred alternative
Fall 2014	Hamilton City Council approval of the Class Environmental Assessment, Project File Report
Fall 2014	Notice of Project Completion issued (by mail and newspaper publication)
	Project File available for mandatory 30-day public and agency review period

CITY OF HAMILTON
CHERRY BEACH SHORELINE PROTECTION INFRASTRUCTURE
CONCEPTUAL DESIGN AND CLASS ENVIRONMENTAL ASSESSMENT (EA)
MINUTES OF KEY STAKEHOLDER CONSULTATION SESSION: CONDO BOARD

DATE: Thursday, June 26, 2014

TIME: 5 PM - 6 PM

LOCATION: Council Chamber, Stoney Creek Municipal Building, 777 Highway 8,
Stoney Creek, ON

PRESENT:

Representative from Condominium Board # 281
Representative from Condominium Board # 298
Representative from Condominium Board # 298
Representative from Bal Harbour Condominiums

City of Hamilton Staff

Dillon Consulting Limited and Shoreplan Engineering Project Team

*In addition to the Condominium Board Representatives, residents from the Condominiums were also in attendance but did not sign the sign-in sheet.

FILE: 12-5934

Introduction/Background:

The consultation session began with the representative from Dillon Consulting providing and overview of the history of the project and the current stage, along with a description of the three alternatives and in particular the preferred option, that of a revetment to be installed along City of Hamilton owned land in the study area. An explanation of the assessment and comparison between the three options was also provided.

Questions and Answers:

The following questions and discussion points were raised during the course of the session:

Q. Why was cobble selected as the beach material and will it be maintained?

A. Grace Tesa responded to say that the beach would be maintained, and that further detail would be provided by the representative from Shoreplan upon her arrival. The answer to this question was that cobble material would be stable for this location. Smaller material like sand would move along the shore thus a larger grain material was selected that would not get carried away easily.

Q. What is the intent for the proposed park?

A. The purpose and intended uses for the park were explained by the City representatives as being primarily geared towards passive uses, which would include some seating, walking areas, a trail, opportunities for walking along the shoreline, etc.

Q. Would there be any intended change to the landscape as a result of the project?

A. The preferred option of a revetment is not intended to induce a significant change to the landscape. The protection will extend slightly into the water in some areas but would primarily involve protection at the shoreline.

Q. Would there be any costs such as for fish removal in order to create space for the revetment, as had been the case in another similar protection scheme at another location?

A. There would be some minimal encroachment into the water, and for that purpose regulators from the Department of Fisheries and Oceans would be involved to ensure that all activities are sensitive to the existing habitat.

Q. Was there any consideration given to the effects of climate change?

A. Climate change was considered with respect to future water level changes based on current projections, and the management thereof. Water levels in Lake Ontario are controlled and will be regulated differently in the future.

Q. Some of the homeowners with property along the shore have installed protective walls – what type of protection will be applied for their sections of the shore? Are there any plans to acquire the sections of privately owned shoreline?

A. The intended protection will only be applied to City owned property, although the City plans to approach the landowners in the area to explore the possibility of negotiating with them to acquire their property as well. In the event that privately-owned land would not be acquired, then the preferred option would be implemented around the private property and restricted to City-owned land. There was also a brief discussion to identify the private and City-owned roads in the study area according to the aerial images provided to participants.

One attendee provided background on a section of the shoreline outside of the study area where a stone protection was installed in front of a steel sheet pile wall and subsequently began to fail because of the waves hitting the protection which led to scouring of the lake bed and shoreline during heavy storms.

Q. Will there be any changes to this plan for the preferred option?

A. The representatives from the City of Hamilton and Dillon Consulting confirmed that the presented plan for the preferred option would not change in any significant way but minor changes could be required during the detailed design phase. No changes are expected as a result of comments received during the 30 days review period which is scheduled for October 2014. All of the presented options would have the same design life of 25-50 years.

One attendee explained that the condo board had had some issues with the owner/builder of the condominium complex and the shorewall that was constructed. The shorewall was recently repaired which required persistence in order to ensure that the shorewall was appropriately repaired.

Q. What are the next steps for the project?

A. The representatives from the City of Hamilton and Dillon Consulting explained that the EA process was nearly complete. Following the stakeholder consultation meetings (tonight) the Project File Report will be submitted to the City for final review and approval. Once the report is approved by City Council, it will be posted for 30 day review period (open for public and agency review). The next steps after the completion of the EA would include securing budget for the project for detailed design and construction. Construction would have to take place following MNR timing windows. Phasing of the project would be considered as a possibility because of the way the structure in the preferred option is segregated across the beach, but this would be confirmed during the detailed design phase to follow after the Class EA process is complete.

Q. Will there be an access to the beach once the project is complete?

A. The representative from Shoreplan Engineering explained that stairs could be installed to provide an access to the beach once the project is complete, this detail would be at the discretion of the City and resolved during detailed design.

Q. When the project is complete will there be a park that is maintained?

A. The representatives from the City of Hamilton explained that the detailed design of the park had not been conducted, and maintenance provisions would be considered at that time.

Q. Will the park area attract other animals, including geese?

A. The representatives from the City of Hamilton explained that geese would be attracted to a manicured lawn or area, and as bird droppings would be of concern (as they are in other areas of Lake Ontario where the spread of E.coli is higher) it would be important to make an effort to prevent a large population of geese from congregating near the shore.

Q. Will EA amendment be required if the preferred option is implemented in additional areas of the shoreline, at a later date?

A. Private property does not require an environmental assessment. The representative from Shoreplan Engineering suggested that replacing existing shoreline protection is a pre-approved activity and would not require the City to undertake an environmental assessment. .

General Discussion:

The representatives from the City of Hamilton and Dillon Consulting requested all attendees to provide any additional questions to Dillon Consulting within the upcoming one to two weeks, as the City would be preparing to present a report to the Council in September. It was also noted that if possible all questions should be raised during the session to address them in a timely manner and move forward with the process. A notice of completion would be issued confirm the ending of the Class Environmental Assessment. A 30-day review period then be open for final comments

and feedback. All stakeholders would receive notification of this via mail and newspaper announcements.

One of the representatives from the Condominium Board identified an area at one end of the shore on the condominium beach where a ditch had been installed and the rocks placed as a protective barrier on the beach had subsequently been moved. The City of Hamilton confirmed that they would look into the matter and consider it in their detailed design. The attendee who raised the issue committed to sending photographs of the problem area to Dillon Consulting and the City of Hamilton.

Errors and/or Omissions:

These minutes were prepared by Zahra Jaffer who should be notified immediately of any errors and/or omissions. Comments should be provided within 5 business days, after which the minutes will be finalized.

DILLON CONSULTING LIMITED
Toronto, ONTARIO

July 8, 2014

Distribution:
Attendees
File

CITY OF HAMILTON
CHERRY BEACH SHORELINE PROTECTION INFRASTRUCTURE
CONCEPTUAL DESIGN AND CLASS ENVIRONMENTAL ASSESSMENT (EA)
MINUTES OF STAKEHOLDER CONSULTATION SESSION: PROPERTY OWNERS

DATE: Thursday June 26 2014

TIME: 7 PM – 8 PM

LOCATION: Council Chamber, Stoney Creek Municipal Building, 777 Highway 8, Stoney Creek, ON

PRESENT:

Representatives from 69 Cherry Beach Road

Representatives from The Lakeshore Motel

City of Hamilton Staff

Dillon Consulting Limited and Shoreplan Engineering Project Team

FILE: 12-5934

Introduction/Background:

The consultation session began with the representative from Dillon Consulting providing an overview of the history of the project and the current stage, along with a description of the three alternatives and in particular the preferred option, that of a revetment to be installed along City of Hamilton owned land in the study area. An explanation of the assessment and comparison between the three options was also provided.

Questions and Answers:

The following questions and discussion points were raised during the course of the session:

Q. Will there be any uses applied to the development area indicated in the study map, aside from a park?

A. The representatives from the City of Hamilton explained that the current intended function of the development area was a passive park. The property owners expressed concern that the land may be used later on for other developments, and requested assurances that this would not happen. The City of Hamilton representatives directed the attendees to contact Rob Norman at the City of Hamilton, who would address their concerns.

One of the representatives from 69 Cherry Beach Road indicated that there was no revetment on their section of the beach currently, but there is a large breakwall installed by the previous owner, and requested an absolute guarantee from the City representatives that the implementation of the preferred option would pose no damage to his section of the shoreline, which comprises of approximately 50 feet of shoreline. The representative from 69 Cherry Beach Road also indicated intent to pursue legal action against the City should there be any reduction or effects to their property.

The representatives from the City of Hamilton and Shoreplan Engineering explained that the type of structure being proposed is very substantial and would also provide some protection to the 69 Cherry Beach Road property. The representative from 69 Cherry Beach Road inquired as to why there had been no discussion of the preferred option being extended onto their property as well, as this may have some cost-reduction benefits to the City from not having to segregate the revetment to go around his section of the beach. The representatives from the City of Hamilton responded that they would look into the matter further and that generally there would be a cost-sharing agreement between the City and the private owner to implement these works.

Q. The first time the proposal was presented at the public consultation session in 2012, the protection extended across private properties at the western limit of the study area. Why has that changed?

A. The representatives from the City of Hamilton and Dillon Consulting explained that after further review and consultation, it was resolved that the protection area be shortened, thus restricting the sites for the installation of the protection solely to City-owned shoreline.

Q. What will happen to water runoff during the implementation of the preferred option? Representatives from The Lakeshore Motel explained that water has been ponding on their property due to differential grading across the area, and the owners expressed concern about water continuing to overflow on their property due to a blocked culvert leading towards the Lake. The representatives from 69 Cherry Beach Road also noted that there had been water flow over their property following major rainstorms, and requested that this be looked into to ensure that their property wall (stone wall) did not sustain damage.

A. The representatives from the City of Hamilton and Shoreplan Engineering confirmed that they would look into the issue during the detailed design phase, and that the existing drainage would be maintained with implementing the preferred option.

Q. Have there been any plans to bring servicing (i.e., sewers and water infrastructure) to the proposed park area?

A. The representatives from the City of Hamilton indicated that there were no current plans and could not speak to those elements as the detailed design for the proposed park had not yet been carried out.

General Discussion:

The representatives from the City of Hamilton and Dillon Consulting relayed the forthcoming schedule for the project, involving a budgeting process within the City department to ensure that all required funds were allocated prior to the implementation phase. A Notice of Completion of the Class EA process would be posted on the City website and issued to all attendees by mail as well as via newspaper announcements. This would then be followed by a review period of 30 days during which any other questions/comments by the public or agencies would be addressed. Following this, a detailed design of the revetment would be undertaken, after which another round of reviews by the regulatory authorities and lead agencies would follow to secure the required approvals. Once the constructed, there would be intermittent checks to ensure the integrity of the structure. The representative from 69 Cherry Beach Road asked if the shore protection would cut into the bank or extend into the lake. The structure will be designed to balance encroachment into the bank and the lake bed but this would be confirmed during detailed design. The representative from 69 Cherry Beach Road noted that there had been previous dumping of materials in the Lake in the study area.

Representatives from the City of Hamilton invited attendees to come forward and speak at the next Council meeting to raise any concerns they have, which would involve registering with the Clerk's office. The representative from 69 Cherry Beach Road also requested that a copy of the minutes from the consultation session be shared with the City's legal department, and representatives from the City of Hamilton agreed that the Risk Department would be copied on the minutes for their reference.

The concern with respect to the urgency of an intervention to protect the shoreline was expressed by all attendees and acknowledged by the representatives from the City of Hamilton. The representative from 69 Cherry Beach Road noted having witnessed surveying being conducted to monitor shoreline erosion over 8 years prior, which was confirmed by City of Hamilton representatives.

The general timeline for the project was indicated as implementation taking place in 2016, following detailed design and approvals. Given the potential for in-water works, there are timing windows during which the revetment could be constructed. During the detailed design phase, the potential to phase the revetment would be explored with regard to the anticipated cost.

Errors and/or Omissions:

These minutes were prepared by Zahra Jaffer who should be notified immediately of any errors and/or omissions. Comments should be provided within 5 business days, after which the minutes will be finalized.

DILLON CONSULTING LIMITED
Toronto, ONTARIO

July 8, 2014

Distribution:
Attendees
File

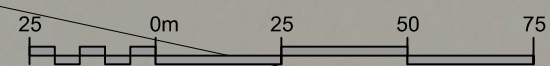
City of Hamilton

Cherry Beach Shoreline Protection Class Environmental Assessment

Stakeholder Consultation Session

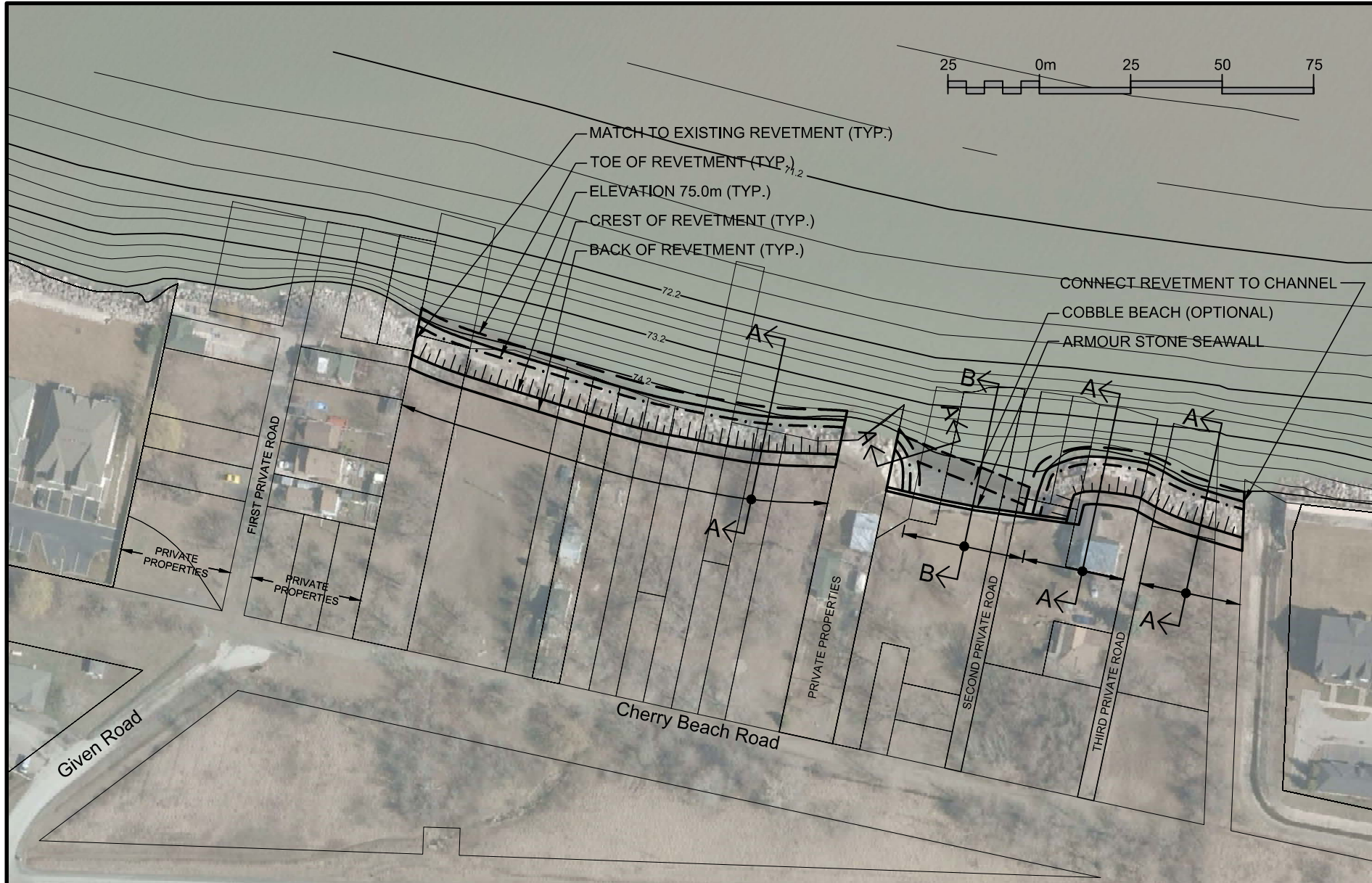
Dillon Consulting Limited

Shoreplan Engineering Limited



- MATCH TO EXISTING REVETMENT (TYP.)
- TOE OF REVETMENT (TYP.)
- ELEVATION 75.0m (TYP.)
- CREST OF REVETMENT (TYP.)
- BACK OF REVETMENT (TYP.)

- CONNECT REVETMENT TO CHANNEL
- COBBLE BEACH (OPTIONAL)
- ARMOUR STONE SEAWALL



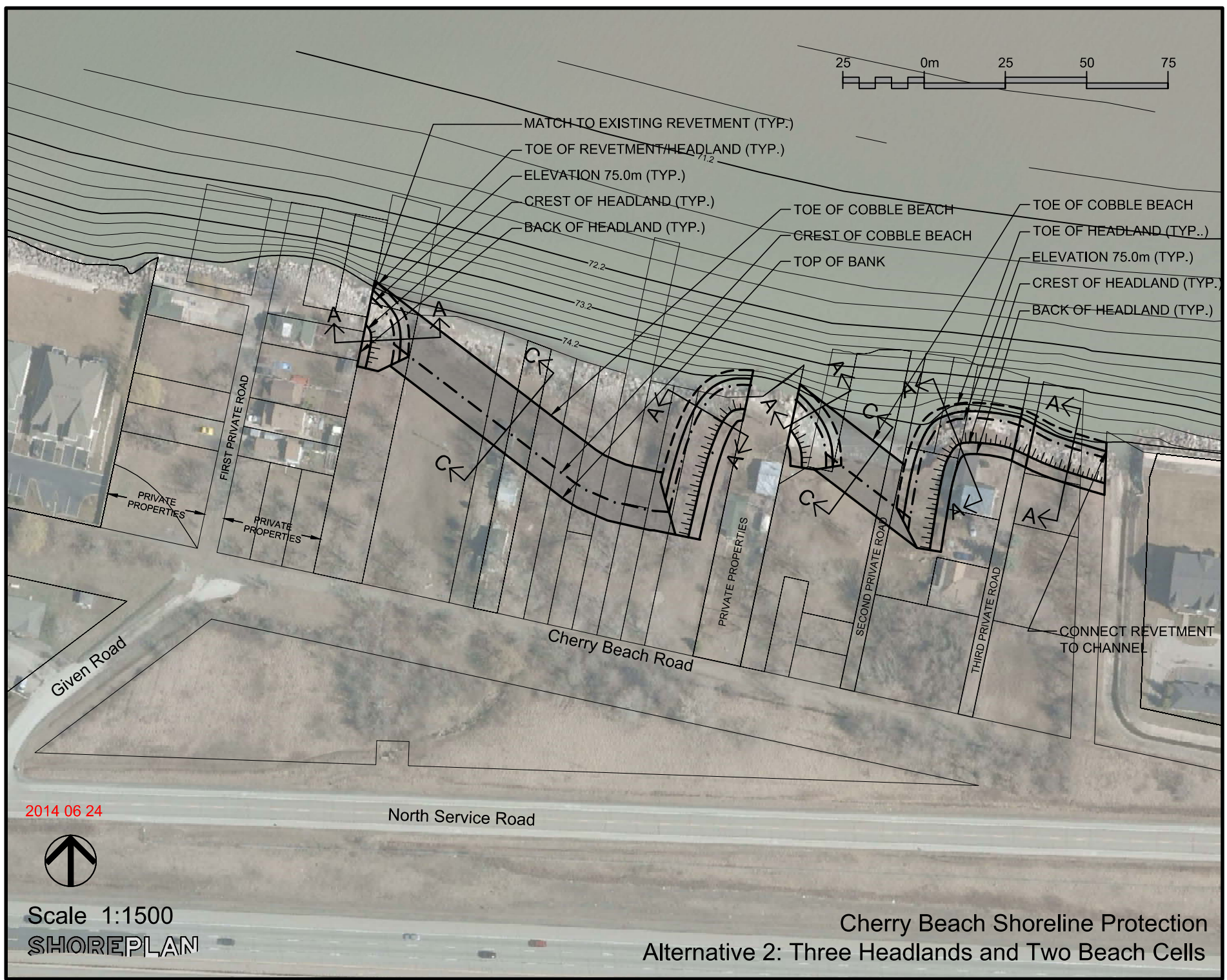
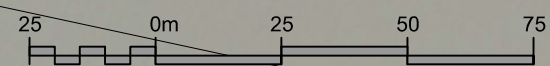
2014 06 24

North Service Road



Scale 1:1500
SHOREPLAN

Cherry Beach Shoreline Protection
Alternative 1: Revetment



2014 06 24



Scale 1:1500
SHOREPLAN

Cherry Beach Shoreline Protection
Alternative 2: Three Headlands and Two Beach Cells

COMMENTS RECEIVED

Bullough, Brent <bbullough@dillon.ca>

Fwd: Cherry Beach Shoreline Protection Infrastructure Concept and Municipal Class EA - Agency Meeting Invitation NEATS 34214

1 message

----- Forwarded message -----

From: **Craigs, Jeremy** <jeremy.craigs@tc.gc.ca>

Date: Fri, Jul 20, 2012 at 1:43 PM

Subject: RE: Cherry Beach Shoreline Protection Infrastructure Concept and Municipal Class EA - Agency Meeting Invitation NEATS 34214

To: "bbullough@dillon.ca" <bbullough@dillon.ca>

Cc: NWP Website - Site internet PEN <NWPontario-PENontario@tc.gc.ca>

Hi Brent;

Thank you for the information regarding the above referenced project. We will not be attending the meeting however we have reviewed the information, and note the following:

Transport Canada is responsible for the administration of the *Navigable Waters Protection Act* (NWPA), which prohibits the construction or placement of any "works" in navigable waters without first obtaining approval. If any of the related project undertakings cross or affect a potentially navigable waterway, the proponent should prepare and submit an application in accordance with the requirements as outlined in the attached Application Guide and Form. Any questions about the NWPA application process should be directed to the Navigable Waters Protection Program at **(519) 383-1863** or NWPontario-PENontario@tc.gc.ca.

Please review the [Minor Works and Waters \(Navigable Waters Protection Act\) Order](#), established to outline the specific standards and criteria under which Transport Canada considers a work as a minor and does not require an application under the NWPA. It is the responsibility of the applicant, prior to submitting an application to the Navigable Waters Protection Program for review, to assess whether their work meets the criteria, as described, and, therefore, falls within one of the excluded classes. An application will only be required if it is determined that the work cannot meet the criteria established for that particular "class" of excluded work.

Thank you,

Jeremy Craigs

23/07/2012

Dillon Consulting Mail - Fwd: Cherry Beach Shoreline Protection Infrastructure Concept and Municipal Cl...

Environmental Officer, Transport Canada - Ontario Region (PHE)
4900 Yonge Street, North York, ON M2N 6A5 Phone: [416-952-0502](tel:416-952-0502)



Bullough, Brent <bbullough@dillon.ca>

RE: Cherry Beach Shoreline Protection Infrastructure Concept and Municipal Class EA - Agency Meeting Invitation

1 message

Morton, Emily <Emily.Morton@dfo-mpo.gc.ca>
To: "Bullough, Brent" <bbullough@dillon.ca>

Thu, Jul 12, 2012 at 2:25 PM

Hi Brent,

I will not be attending the Cherry Beach Shoreline Protection meeting. I have spoken with the Hamilton Conservation Authority and I understand they will be attending. As part of Fisheries and Oceans Canada and Hamilton Conservation Authority Level 2 agreement, the conservation authority will initially screen the project and contact Fisheries and Oceans Canada if they feel the project will require a Fisheries Act Authorization.

Thanks,

Emily
Emily Morton

Fish Habitat Biologist / Biologiste de l'habitat du poisson

Ontario-Great Lakes Area / Secteur de l'Ontario et des Grands Lacs
Central & Arctic Region / Région du Centre et de l'Arctique

Fisheries and Oceans Canada / Pêches et Océans Canada

Government of Canada / Gouvernement du Canada

905-639-0411

Fax/télécopieur: 905-639-3549

3027 Harvester Road, Suite 304 / 3027 chemin Harvester, pièce 304

P.O. Box 85060 / Boite postale 85060

Burlington, ON L7R 4K3

Emily.Morton@dfo-mpo.gc.ca

From: Bullough, Brent [mailto:bbullough@dillon.ca]

Sent: July 11, 2012 12:09 PM

To: david.marriott@ontario.ca; darren.kenny@conservationhamilton.ca; barbara.slattery@ontario.ca; Gibson, Dave; moussem@tc.gc.ca; SATTARS@tc.gc.ca

Cc: james.omara@ontario.ca; joad.durst@ontario.ca; tspeck@conservationhamilton.ca; Morton, Emily; Bhajan Sarker; Grace Tesa; 125934

Subject: Cherry Beach Shoreline Protection Infrastructure Concept and Municipal Class EA - Agency Meeting Invitation

Good Afternoon,

As detailed in the attached invitation, the City of Hamilton has initiated the above Class EA is asking that you or a designate from your organization attend a meeting on July 24, 2012 from 1-3 pm at the Hamilton City Centre to hear about and provide feedback on the recommended design alternative.

Representatives from the following agencies are being invited to this meeting.

- Ministry of the Environment
- Ministry of Natural Resources
- Hamilton Conservation Authority
- Fisheries and Oceans Canada
- Transport Canada

City staff and the consultation team will be in attendance as well.

We ask that you RSVP by responding to this email or by contacting me, Brent Bullough, at [416-229-4647 ext. 2343](tel:416-229-4647).

Thank You,

Brent



Brent Bullough
Dillon Consulting Limited
235 Yorkland Blvd Suite 800
Toronto, Ontario, M2J 4Y8
T - 416.229.4647 ext. 2343
F - 416.229.4692
M - 416.356.8447
BBullough@dillon.ca
www.dillon.ca

 *Please consider the environment before printing this email*

This message is directed in confidence solely to the person(s) named above and may contain privileged, confidential or private information which is not to be disclosed. If you are not the addressee or an authorized representative thereof, please contact the undersigned and then destroy this message.

Ce message est destiné uniquement aux personnes indiquées dans l'entête et peut contenir une information privilégiée, confidentielle ou privée et ne pouvant être divulguée. Si vous n'êtes pas le destinataire de ce message ou une personne autorisée à le recevoir, veuillez communiquer avec le soussigné et ensuite détruire ce message.



Tesa, Grace <gtesa@dillon.ca>

Cherry Beach Road - Shoreline Protection Project - Notice of Study Commencement

1 message

Marriott, David (MNR) <David.Marriott@ontario.ca>

Tue, Apr 24, 2012 at 2:22 PM

To: christopher.gainham@hamilton.ca

Cc: "Slattery, Barbara (ENE)" <barbara.slattery@ontario.ca>, "Mills, Devin (MNR)" <devin.mills@ontario.ca>, gtesa@dillon.ca

Hi Chris,

The Ministry of Natural Resources (MNR) is in receipt of the Notice of Study Commencement, regarding the Cherry Beach Road shoreline protection project in the City of Hamilton (Stoney Creek). It is understood that the study is to be completed in accordance with the requirements for a Schedule B project as described under the Municipal Class Environmental Assessment (EA) process, pursuant to the *Environmental Assessment Act*.

Ministry staff notes that an authorization(s) under the *Public Lands Act* may be required to support the implementation of the project. When the information becomes available for review, the Ministry requires circulation on the alternatives being considered to determine the potential implications of the legislation.

The Ministry appreciates your attention to the above comments.

Please contact the undersigned if further comment or clarification is required.

Thanks

Dave

Dave Marriott

District Planner

Ministry of Natural Resources, Guelph District

1 Stone Road West

Guelph ON, N1G 4Y2

(P) [519-826-4926](tel:519-826-4926)

5/3/12

Dillon Consulting Mail - Cherry Beach Road - Shoreline Protection Project - Notice of Study Commencem...

(F) [519-826-6849](tel:519-826-6849)

email: david.marriott@ontario.ca

Bullough, Brent <bbullough@dillon.ca>

Fwd: Cherry Beach Class EA ESA Screening_Existing Conditions_Agency Info Request

1 message

----- Forwarded message -----

From: **Marriott, David (MNR)** <David.Marriott@ontario.ca>

Date: Wed, Jul 4, 2012 at 9:57 AM

Subject: RE: Cherry Beach Class EA ESA Screening_Existing Conditions_Agency Info Request

To: drestivo@dillon.ca

Cc: "Mills, Devin (MNR)" <devin.mills@ontario.ca>, "Beriault, Karine (MNR)" <Karine.Beriault@ontario.ca>, "Slattery, Barbara (ENE)" <barbara.slattery@ontario.ca>

Hi David,

The Ministry is in receipt of the email below inquiring about the *Public Lands Act*, and the ESA Screening technical memorandum dated April 5, 2012. Ministry staff have reviewed the documentation and offer the following comments for your consideration. It is understood that the Municipal Class Environmental Assessment (EA - Schedule B) will identify appropriate erosion mitigation measures for the shoreline of Lake Ontario within the study area.

Ministry staff notes that the parcel(s) within the study area are lapped by the water's of Lake Ontario. The beach areas within the study area (referred to as 'seasonally inundated shorelands') are privately owned uplands that are regulated under the *Public Lands Act* for erosion control measures (e.g. shorewalls and breakwalls). Any improvements or repairs to existing erosion control measures, or the development of new measures, will require review and potential approval from the Ministry under the *Public Lands Act* and its regulations. The bed of the Lake is Crown Land as well, and any shoreline improvements that occupy the bed will require approval and separate occupational authority under the Act. It is recommended that the technical memorandum (e.g. Section 5.0) acknowledge the *Public Lands Act* as appropriate.

Ministry staff also understands that new groynes are being evaluated under the EA as a potential erosion mitigation alternative. Please be advised that the Ministry would not be supportive of new groynes as the technically preferred alternative under the *Public Lands Act*.

The technical memorandum's approach to species at risk excluded occurrences that predated 1991 (e.g. 'historical observations' > 20 years). The memorandum also states that this approach is consistent with provincial recovery strategies and past MNR guidance. Please be advised that this approach is not supported by the Ministry. Since the Province has not been surveyed comprehensively for the presence of listed species, the date of an observation or the absence of a record is not an appropriate indicator for the absence of species at risk from an area. An occurrence is useful to flag the presence of the species in the area, but is not an appropriate tool to determine whether a species is absent from the area, or whether it should be surveyed for.

It is understood that a single preliminary site investigation was conducted on February 28, 2012. The Ministry would appreciate if further rationale could be provided to support the site investigation timing, to appropriately screen for potential habitat conditions (e.g. Ecological Land Classification methodology, presence/absence of non-woody plants).

Table 4 provides a screening for potential species at risk. Ministry staff notes that Eastern Musk Turtle (threatened) has been recorded approximately 2.2 km west of the site. It is also recommended that the habitat descriptions for Butternut (endangered if retainable), Monarch (special concern) and Blanding's Turtle (threatened) be reviewed. For example:

- i. Butternut grows in many places, other than moist well drained soils in deciduous forests;
- ii. The habitat description for Monarch provides a patch size threshold of > 0.5 hectares. Please note that there is no minimum patch size requirement for the species; and
- iii. Blanding's Turtle are also known to in-habitat shoreline environments.

If further comment or clarification is required please contact the undersigned.

Thanks

Dave

Dave Marriott

District Planner

Ministry of Natural Resources, Guelph District

1 Stone Road West

Guelph ON, N1G 4Y2

(P) [519-826-4926](tel:519-826-4926)

(F) [519-826-6849](tel:519-826-6849)

email: david.marriott@ontario.ca

Ministry of the Environment
West Central Region

Ministère de l'Environnement



119 King Street West
12th Floor
Hamilton, Ontario L8P 4Y7
Tel.: 905 521-7640
Fax: 905 521-7820

119 rue King ouest
12e étage
Hamilton (Ontario) L8P 4Y7
Tél. : 905 521-7640
Télec. : 905 521-7820

April 20, 2012

Ms Grace Tesa
Dillon Consulting Ltd.
235 Yorkland Boulevard, Suite 800
Toronto, Ontario
M2J 4V8

Dear Ms Tesa:

**Re: Notice of Commencement
Cherry Beach Shoreline Protection MEA Class EA Study**

Thank you for your Notice advising of the commencement of the above-noted project to assess potential effects on property and lands that may be unsafe for development due to steep banks within this area and to identify appropriate erosion mitigation measures and an appropriate conceptual plan for development within this area. You have advised that the project is going to be undertaken following the requirements for Schedule "B" projects, as provided by the MEA Class EA. As you are aware, Schedule "B" projects require that a Project File be prepared. The Project File should be organized in such a way as to clearly demonstrate that the appropriate steps in Phases 1 and 2 have been followed and explain the following:

- background to the project and any earlier studies that may have been done;
- the nature and extent of the problem or opportunity, to explain the source of the concern or issue and the need for a solution;
- description/inventory of the environment;
- the alternative solutions considered and the evaluation process followed to select the preferred solution;
- follow-up commitments, including any monitoring necessary; and,
- the public consultation program employed and how concerns that were raised have been addressed.

The Project File must contain a complete record of all activities associated with the planning of the Project and shall include:

- correspondence;
- copies of notices, letters, bulletins relating to public consultation;
- memoranda to file explaining the proponent's rationale in developing stages of the project; and,
- copies of reports prepared by consultants and others.

The project documentation must be maintained in such a way that it is suitable for easy review by the public at any time. Once the Project File is finalized a Notice of Completion is required to be issued, allowing the public at least a 30 calendar day period during which documentation may be reviewed and comment and input submitted to the municipality.

Please note that as part of the required stakeholder and agency consultation, proponents are advised to contact the following agencies to determine potentially affected Aboriginal communities in the project area. You are encouraged to visit the ministry's website at <http://www.ene.gov.on.ca/en/eaab/aboriginal-resources.php> for the most up to date contact

list in this regard. Once identified, you are advised to provide notification directly to the Aboriginal communities who may be affected by the project and provide them with an opportunity to participate in any planned public consultation sessions and comment on the project.

We request that you forward one copy of the Notice of Completion and be prepared to provide the complete Project File to this Office for our review, filing and potential comments if requested.

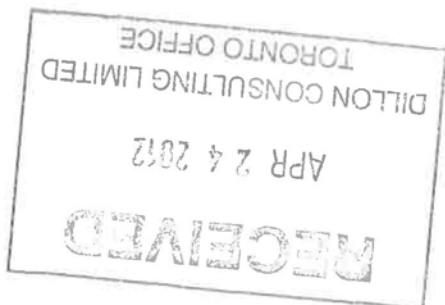
You are also reminded that when concerns are raised during the public comment period, the concerned party should be consulted in an attempt to resolve the concerns. Discussions to this end should proceed for an appropriate period of time, even if this means the 30-day review period is exceeded. The concerned party must be advised that if such discussions are unsuccessful at resolving the concerns, they can submit a Part II Order request if they have not already done so to the Minister within a further seven calendar days following the end of discussions.

Should you have any questions regarding the Class EA process, please feel free to contact me at (905) 521-7864 or at Barbara.slattery@ontario.ca.

Sincerely,

Barbara Slattery

Barbara Slattery
EA/Planning Coordinator





Bullough, Brent <bbullough@dillon.ca>

Fwd: FW: Cherry Beach Shoreline Protection EA Study

1 message

From: Roszler, Greg (MTO) [<mailto:Greg.Roszler@ontario.ca>]
Sent: Tuesday, May 22, 2012 10:12 AM
To: Gainham, Christopher
Subject: Cherry Beach Shoreline Protection EA Study

Christopher,

We have reviewed the Cherry Beach Shoreline Protection proposal in Stoney Creek and we have no comments or concerns as the study area is outside of the Ministry of Transportation's permit control area. Therefore, MTO will not require any future circulation of subsequent submissions for this project.

If you have any questions, please feel free to contact me.

Regards,

Greg Roszler
Project Manager
Corridor Management Section
Ministry of Transportation
1201 Wilson Avenue
Downsview, Ontario
M3M 1J8
Phone: (416) 235-5124
Fax: (416) 235-4267



Niagara Escarpment Commission

232 Guelph St.
Georgetown, ON L7G 4B1
Tel: 905-877-5191
Fax: 905-873-7452
www.escarpment.org

Commission de l'escarpment du Niagara

232, rue Guelph
Georgetown ON L7G 4B1
No de tel. 905-877-5191
Télécopieur 905-873-7452
www.escarpment.org



Ontario's Niagara Escarpment
A World Biosphere Reserve

April 27, 2012

Chris Gainham
Senior Project Manager
Environment & Sustainable Infrastructure Division
Public Works Department
City of Hamilton
400 – 77 James Street North
Hamilton, ON L8R 2K3

Dear Mr. Gainham:

**RE: Notice of Study Commencement
Cherry Beach Shoreline Protection
Municipal Class Environmental Assessment Study**

The Niagara Escarpment Commission (NEC) received the above noted Notice of Study Commencement regarding identifying appropriate erosion mitigation measures and a preferred conceptual design for the Cherry Beach Shoreline within the Municipality of Hamilton.

This area is outside the Niagara Escarpment Plan.

Therefore, the Niagara Escarpment Commission has **no comment** on this project, and no further correspondence is required on this project.

Thank you for the opportunity to comment.

Yours very truly,


Ken Whitbread
Manager

KW:jw

RECEIVED MAY 02 2012



Tesa, Grace <gtesa@dillon.ca>

RE: Cherry Beach Class EA ESA Screening_Existing Conditions_Agency Info Request

1 message

Kenny, Darren <Darren.Kenny@conservationhamilton.ca>

Thu, Apr 12, 2012 at 4:28 PM

To: "Restivo, David" <drestivo@dillon.ca>, "Buck, Graham (MNR)" <graham.buck@ontario.ca>, "Gibson, Dave" <Dave.Gibson@dfo-mpo.gc.ca>

Cc: "Jennings, Lisa" <Lisa.Jennings@conservationhamilton.ca>, "McDonell, Lesley" <Lesley.McDonell@conservationhamilton.ca>, Jonathan Harris <JHarris2@dillon.ca>, Grace Tesa <gtesa@dillon.ca>, 125934 <125934@dillon.ca>, "Plosz, Catherine" <Catherine.Plosz@hamilton.ca>, "Fazio, Margaret" <Margaret.Fazio@hamilton.ca>

David,

Please be advised that our office does not comment directly on ESA screenings, Graham Buck with the MNR will provide comment in that regard.

However, our office does comment on Environmental Impact Studies completed as part of Class EAs. In this capacity, we provide the following comments:

Site Investigation Methodology

- Three season botanical inventory must be completed (inventories to be conducted during spring, summer and late fall in order to capture spring (ephemeral), summer and fall blooming plants). Inventories conducted during the winter months are not accepted.
- Breeding Bird Survey requires a minimum of 2 visits during the breeding bird season that are at least 10 days apart – See **Ontario Breeding Bird Atlas protocols** for further guidance. *Please note that breeding bird surveys are especially critical when dealing with birds legislated under the **Migratory Birds Convention Act, 1994 (1994, c.22)**.*
- Assessment of the study area for presence of significant natural heritage features including significant wildlife and their habitat should be completed. Please see **Natural Heritage Reference Manual for Natural Heritage Polices of the Provincial Policy Statement, 2005, 2nd Edition** and **MNR Significant Wildlife Habitat Technical Guidelines, 2000** for further information.

- Incidental wildlife survey throughout study area (both within and adjacent to natural heritage features) should be completed. Wildlife includes: mammals, amphibians, reptiles, Lepidoptera species, Odonata species, and non breeding/migrant birds. Surveys are to include coverage of all habitats represented within study area. Trace evidence should also be considered during the surveys. This includes: scat, tracks, carcasses, owl pellets, hair etc.
- Since the surveys were conducted during the winter months, it is suggested that incidental wildlife surveys be conducted along with the botanical inventory survey during the proper time of year.

Aquatic Assessment – Minimum Requirements

-

- Fisheries Assessment is to be conducted during a time of year when water levels are conducive to fish passage and utilization of the system by fish is present.
- Determination of the presence or absence of fish habitat (direct or indirect) as defined by the federal **Fisheries Act and DFO - Policy for the Management of Fish Habitat in Ontario** needs to be completed. HCA staff will review the EA under the Level II Agreement with the Department of Fisheries and Oceans Canada (DFO)

Request for additional information

Unfortunately HCA does not have any additional data available for the study area. The vast majority of the data requested would be provided by MNR.

It should be noted that our office has received no prior circulations nor had any previous consultation on this EA. Therefore, the above comments are based solely on the report contents. It should also be noted that the majority of the lands involved in the EA are regulated for development by the HCA and that any proposed shoreline protection works and/or other development of lands within the regulated area will require a permit from our office. Shoreline protection works will be required to be engineer designed.

If you have any questions regarding these comments, please contact me.

Darren Kenny, B.Sc., (Hons.)

Watershed Officer

Hamilton Conservation Authority

P.O. Box 81067, 838 Mineral Springs Road

5/3/12

Dillon Consulting Mail - RE: Cherry Beach Class EA ESA Screening_Existing Conditions_Agency Info Re...

Ancaster, Ontario L9G 4X1

Tel - 905-525-2181, ext. 131

Fax - 905-648-4622

darren.kenny@conservationhamilton.ca

Website - www.conservationhamilton.ca

The contents of this e-mail and any attachments are intended for the named recipient(s).

This e-mail may contain information that is privileged and confidential.

If you have received this message in error or are not the named recipient(s),

please notify the sender and permanently delete this message without reviewing,

copying, forwarding, disclosing or otherwise using it or any part of it in any form whatsoever.

Thank you.



Hamilton
Public Works

COMMENT FORM

**Cherry Beach Shoreline Protection Infrastructure
Conceptual Design and Class Environmental Assessment
Public Information Centre
May 3, 2012**

RECEIVED MAY 16 2012

THANK YOU for attending our Public Information Centre.

Please take a few minutes and provide us with your thoughts and comments on the project. Comments received will be considered during completion of the environmental assessment process.

In conjunction with the Cherry Beach Shoreline Protection project, consideration should be given to the outflow from the storm sewer at the west side of our property (Seaside Village) as it is washing away our wall protection.

Please check here if you would like to be added to the project contact list and provide your name and contact information below.

Name: _____
Email: _____
Address: _____

Comments can be left at the registration table or sent by May 18, 2012 to either of the following:

Bhajan Sarker, P. Eng.
Project Manager
Environmental & Sustainable
Infrastructure Division
Public Works Department
City of Hamilton
400-77 James St. North
Hamilton, ON L8R 2K3
P: (905) 546-2424 ext. 5109
F: (906) 546-4491
Bhajan.sarker@hamilton.ca

Grace Tesa, P. Eng.
Project Manager
Dillon Consulting Limited
235 Yorkland Blvd Suite 800
Toronto, ON M2J 4V8
P: (416) 229-4647 ext. 2344
F: (416) 229-4692
Gtesa@dillon.ca

From:

Sent: September 10, 2012 11:08 AM

To: Sarker, Bhajan

Subject: Cherry Beach Shoreline Protection

Just to let you know I'm still interested in the shoreline protection, but have changed my e-mail address from
to

Seaside Village



Hamilton
Public Works

COMMENT FORM

**Cherry Beach Shoreline Protection Infrastructure
Conceptual Design and Class Environmental Assessment
Public Information Centre
May 3, 2012**

THANK YOU for attending our Public Information Centre.

Please take a few minutes and provide us with your thoughts and comments on the project. Comments received will be considered during completion of the environmental assessment process.

*Alternate 5 is my preferred choice.
If we can build Pier 4/Bayfront Park
into the water we can build
Alternate 5! Buy all existing homes
at Cherry Beach and convert
this whole area into a large park.*

Please check here if you would like to be added to the project contact list and provide your name and contact information below.

Name: _____

Email: _____

Address _____

Comments can be left at the registration table or sent by May 18, 2012 to either of the following:

Bhajan Sarker, P. Eng.
Project Manager
Environmental & Sustainable
Infrastructure Division
Public Works Department
City of Hamilton
400-77 James St. North
Hamilton, ON L8R 2K3
P: (905) 546-2424 ext. 5109
F: (906) 546-4491
Bhajan.sarker@hamilton.ca

Grace Tesa, P. Eng.
Project Manager
Dillon Consulting Limited
235 Yorkland Blvd Suite 800
Toronto, ON M2J 4V8
P: (416) 229-4647 ext. 2344
F: (416) 229-4692
Gtesa@dillon.ca



City of Hamilton
City Hall, 71 Main Street West
Hamilton, Ontario
Canada L8P 4Y5

Infrastructure and Source Water Planning
Public Works Department
Physical Address: 77 James St N Suite 400
Phone: 905-546-2424 Fax: 905-546-2627

Hamilton

July 11, 2012

**Re: Invitation to Stakeholder Meeting:
Cherry Beach Shoreline Protection Infrastructure Concept and Municipal Class Environmental
Assessment**

The City of Hamilton has initiated the Cherry Beach Shoreline Protection Infrastructure Conceptual Design and Municipal Class Environmental Assessment (Class EA). Cherry Beach is located in Stoney Creek on the southwest shore of Lake Ontario and the site consists of approximately 300 metres of shoreline. An earlier review of the site and erosion processes indicated high erosion rates and the presence of a very steep bank with no established vegetation. Dillon Consulting Limited and Shoreplan Engineering were retained to complete the Municipal Class EA process and the Conceptual Design for Cherry Beach Shoreline Protection Infrastructure.

The study has progressed through Phase 2 of the Class EA process and we are now in Phase 3. As part of Phase 2, the existing conditions were defined, the problem was confirmed, and alternative solutions were evaluated. A Public Information Centre was held on May 3, 2012 to present the alternative solutions. Alternative designs for each solution were also presented to provide more information on what each alternative might entail. Based on feedback from the public and other stakeholders, a recommended design alternative has been identified and is considered a Schedule C project under the Municipal Class EA. To comply with the Environmental Assessment Act, the study will follow Phases 1 to 4 of the Municipal Class Environmental Assessment (EA) process (October 2000, as amended in 2007). As such, the recommended alternative will be presented to local stakeholder and agencies for their input on the evaluation and identified mitigation measures. The results of the study will be documented in an Environmental Study Report.

As part of the agency consultation, we wish to extend an invitation to you or your designate to attend a meeting to hear about and provide feedback on the recommended design alternative, including the evaluation process and identified mitigation measures. This meeting will take place on **July 24, 2012 from 1 to 3 pm at City Centre, Suite 400, Room # 400E, 77 James St N, Hamilton, ON L8R 2K3**. If you or your designate are unable to attend in person, we will also provide you with the option of calling into the meeting.

If you have any questions, please contact the undersigned at 905-546-2424 extension 5109 or email at bhajan.sarker@hamilton.ca.

We thank you for considering this invitation and look forward to your response.

Sincerely,

Bhajan Sarker, P.Eng.
Project Manager
Infrastructure & Source Water Planning
Environment & Sustainable Infrastructure Division
Public Works Department, City of Hamilton



Roadhouse, Emily <eroadhouse@dillon.ca>

UPDATED Invitation to Stakeholder Meeting - Cherry Beach Shoreline Protection Infrastructure Concept and Municipal Class Environmental Assessment

1 message

Roadhouse, Emily <eroadhouse@dillon.ca>

Wed, Oct 23, 2013 at 10:47 AM

To: "monique.mousseau" <monique.mousseau@tc.gc.ca>, "derren.kenny" <derren.kenny@conservationhamilton.ca>, "mike.stone" <mike.stone@conservationhamilton.ca>, "barbara.slattery" <barbara.slattery@ontario.ca>, "david.marriott" <david.marriott@ontario.ca>
Cc: Grace Tesa <gtesa@dillon.ca>, 125934 <125934@dillon.ca>

Update: Please note that the stakeholder meeting will take place on November 6, 2013 from 10:00 a.m. to 12:00 p.m.

Good Morning,

The City of Hamilton has initiated the Cherry Beach Shoreline Protection Infrastructure Conceptual Design and Municipal Class Environmental Assessment (Class EA). Cherry Beach is located in Stoney Creek on the southwest shore of Lake Ontario and the site consists of approximately 300 metres of shoreline. An earlier review of the site and erosion processes indicated high erosion rates and the presence of a very steep bank with no established vegetation. Dillon Consulting Limited and Shoreplan Engineering were retained to complete the Municipal Class EA process and the Conceptual Design for Cherry Beach Shoreline Protection Infrastructure.

As part of the agency consultation, we wish to extend an invitation to you or your designate to attend a meeting to hear about and provide feedback on the updated recommended design alternative, including the evaluation process and identified mitigation measures. This meeting will take place on **November 6, 2013 from 10:00 a.m. to 12:00 p.m. at City Centre, Suite 400, Room # TBD, 77 James St N, Hamilton, ON L8R 2K3.** If you or your designate are unable to attend in person, we will also provide you with the option of calling into the meeting.

Tentative Agenda :

- Introductions
- Project Updated Overview
- Alternative Methods
- Next Steps
- Others

Additional details and review materials will be provided in advance of the meeting.

We thank you for considering this invitation and look forward to your response.

Sincerely,

Emily Roadhouse, M.Sc.
Planner

Emily Roadhouse
Dillon Consulting Limited



130 Dufferin Avenue Suite 1400
London, Ontario, N6A 5R2
T - 519.438.1288 ext. 1315
F - 519.672.8209
ERoadhouse@dillon.ca
www.dillon.ca

 Please consider the environment before printing this email

DILLON CONSULTING LIMITED
235 Yorkland Blvd.
Suite 800
Toronto, Ontario
M2J 4Y8

Att: Grace Tesa P.Eng.

Re: Cherry Beach Shoreline Project

Dear Ms. Tesa

As per our meeting last Thursday evening June 26th at the Stoney Creek Municipal offices, we wish to follow up on a conversation we had regarding the storm sewer water that will enter Lake Ontario at the corner of this proposed project, and the effect it is having on the existing corner of our property.

The two corners will only be approximately 8 meters apart from each other, and we have sent you a series of pictures showing you where the water comes from, and what effect this surge of water has had on our property at this outlet to the lake.

Picture "A" shows the two massive outlets that come from the QEW and east of our location.

Picture "B" shows how these two outlets combine into one 26 meter long trench that takes a right curve and heads toward the lake.

Picture "C" shows you a gradual downhill trench that continues from the curve and is 24 meters long.

The water at this point from a thunderstorm or heavy rainstorm has now picked up tremendous speed, and it hits a section of the trench which is approximately a 4 meter drop to the lake. We have seen this surge hit so hard and fast, that it has caused the water to jut up into the air 3 meters high. (see picture "D")

Picture "E" gives you an idea of how our armour stone was when it was originally put in. This picture was taken 30 meters from the corner of the trench.

Pictures "F" & "G" are taken from our corner next to the trench. As you can plainly see, the majority of the rocks are submerged, and many of the large armour stone pieces are 10 to 15 meters out in the lake.

We are pointing out this potential problem for your project, as you will need to consider how to more fully protect your corner of the shoreline.

We would also ask the City of Hamilton, to consider lifting and resetting back into place our armour stone to our corner while they have the heavy equipment working there for this project.

We have sent you 6 copies of this letter, and 6 sets of pictures for you to distribute to the people who attended our meeting, and anyone else who should be made aware of this potential problem. Please give one copy to our councilor Maria Pearson.

Thank you for your time, and we would welcome anyone involved with this project to come and view our situation. We hope this will help you with any decisions you make in securing the shoreline for all of us to enjoy.

Yours truly _____

President
Seaside Village WCC 281







