

### LOCATION PLAN

PROPOSED PERMANENT CLOSURE AND SALE OF PORTION OF ROAD ALLANCE ABUTTING 40 MAPLE DRIVE

CITY OF HAMILTON  
PUBLIC WORKS DEPARTMENT

### LEGEND



**SUBJECT LANDS**

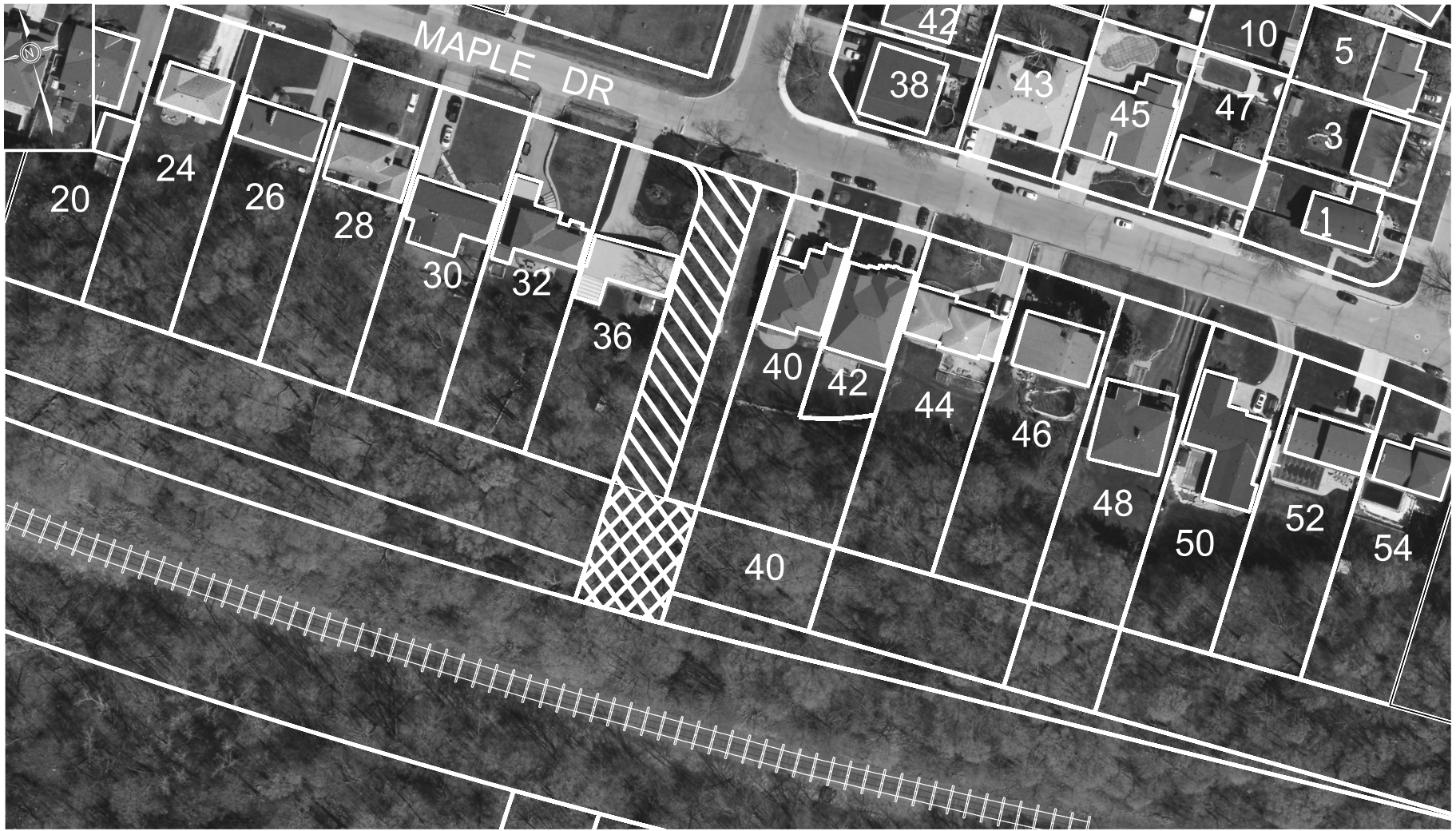


**Lands Approved for Closure through PW16112**

DATE: JANUARY 31, 2019

Not to Scale

REFERENCE FILE NO : PW19

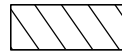


Hamilton

PROPOSED PERMANENT CLOSURE AND  
SALE OF PORTION OF ROAD ALLANCE  
ABUTTING 40 MAPLE DRIVE

Geomatics & Corridor Management Section  
Public Works Department

LEGEND



Lands Approved  
for Closure through  
PW16112



SUBJECT LANDS

26/03/2019  
Sketch By: CF