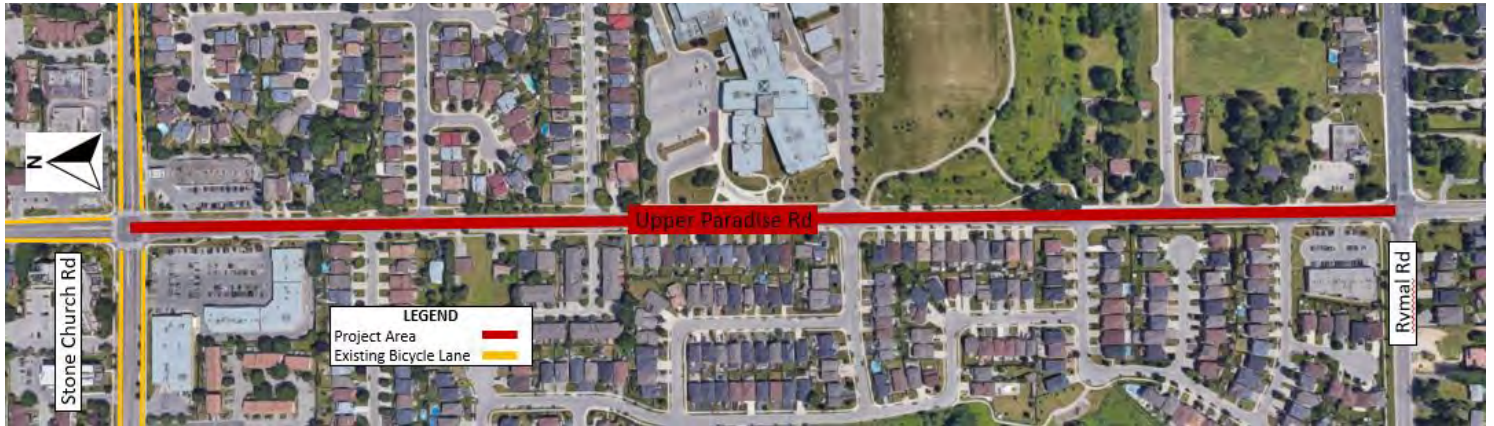


Upper Paradise Rd

Project Details

Project Boundary:	Stone Church Rd to Rymal Rd	Funding Source:	On-Street Cycling 2021
Phase:	Design/Implement 2023	Project Length:	1.0 km
Ward:	14		

Key Map



Description

Add buffered bicycle lanes, within existing roadway. Include intersection crossing treatments at Upper Paradise Rd and Stone Church Rd as well as barriers at intersections. Consider what protected intersection elements could be included at the intersection of Upper Paradise Rd and Stone Church Rd.

Precedent Images and Visualizations



Upper Paradise Rd, Hamilton
Buffered bicycle lanes with barriers



Paramount Rd, Hamilton
Buffered bicycle lanes

Potential Impacts

HSR Route/Area	Impacts
34 - Upper Paradise	Minimal impact is anticipated

Parking Review

Existing parking metered (6 in total) spaces on the west side of Upper Paradise Rd, south of Stone Church Rd would need to be removed and/or relocated to accommodate bicycle lanes.

Rationale

This project will complete the last segment of bicycle lanes on Upper Paradise Rd between Rymal Rd and Scenic Dr and provide a connection to the Stone Church Rd bicycle lanes.

According to the cycling facilities nomograph (OTM Book 18) and the complete streets audit tool, this collector street should have, at a minimum, designated cycling operating space, which will be marked by paint. In addition to OTM Book 18, Transportation Association of Canada's (TAC), Safety Performance of Bicycle Infrastructure in Canada provides a bicycle facility selection flow chart. The TAC flow chart identifies, at a minimum, buffered bicycle lanes. Inclusion of a painted buffer and/or barriers, should be considered where possible.

Strategic Alignment

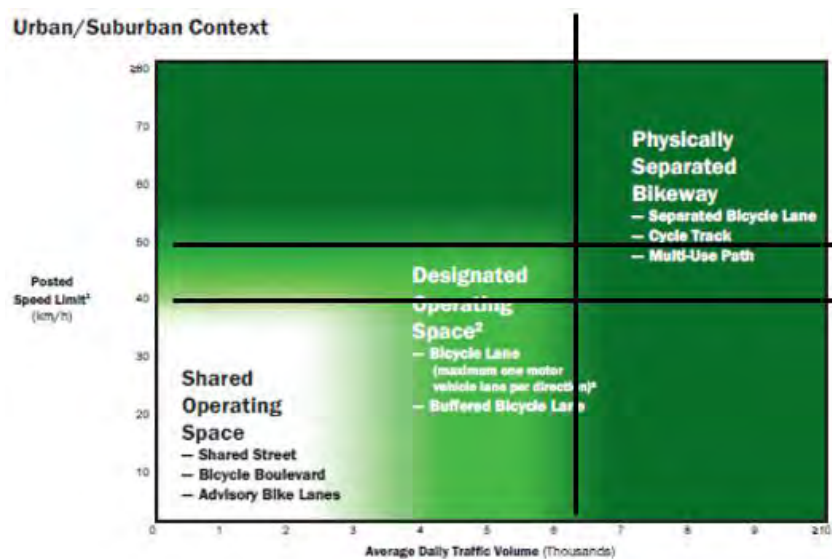
This project will connect to existing bicycle lanes on Upper Paradise Rd north of Stone Church Rd as well as the bicycle lanes on Stone Church Rd. These cycling facilities will complete the Upper Paradise Rd cycling corridor spanning from Scenic Dr to Rymal Rd.

According to the cycling facilities nomograph (OTM Book 18) and the complete streets audit tool, this collector street should have a designated cycling operating space, which will be marked by paint, concrete curbs and flexposts.

Cycling Facilities Nomograph Alignment

Stone Church Rd-Kurdon
(40km/h)
 NB: 6,339
 SB: 6,740

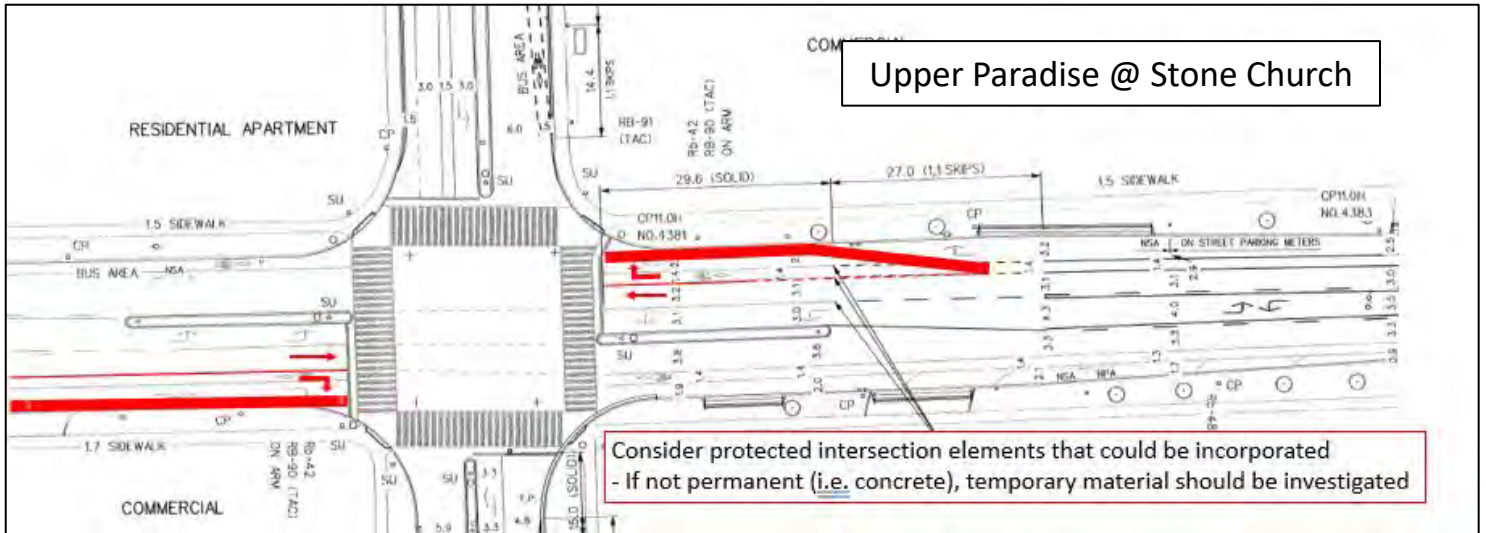
Richview-Meadowbank
(50km/h)
 NB: 5,791
 SB: 5,843



Detailed Maps



Detailed Maps



Cross Section Details

