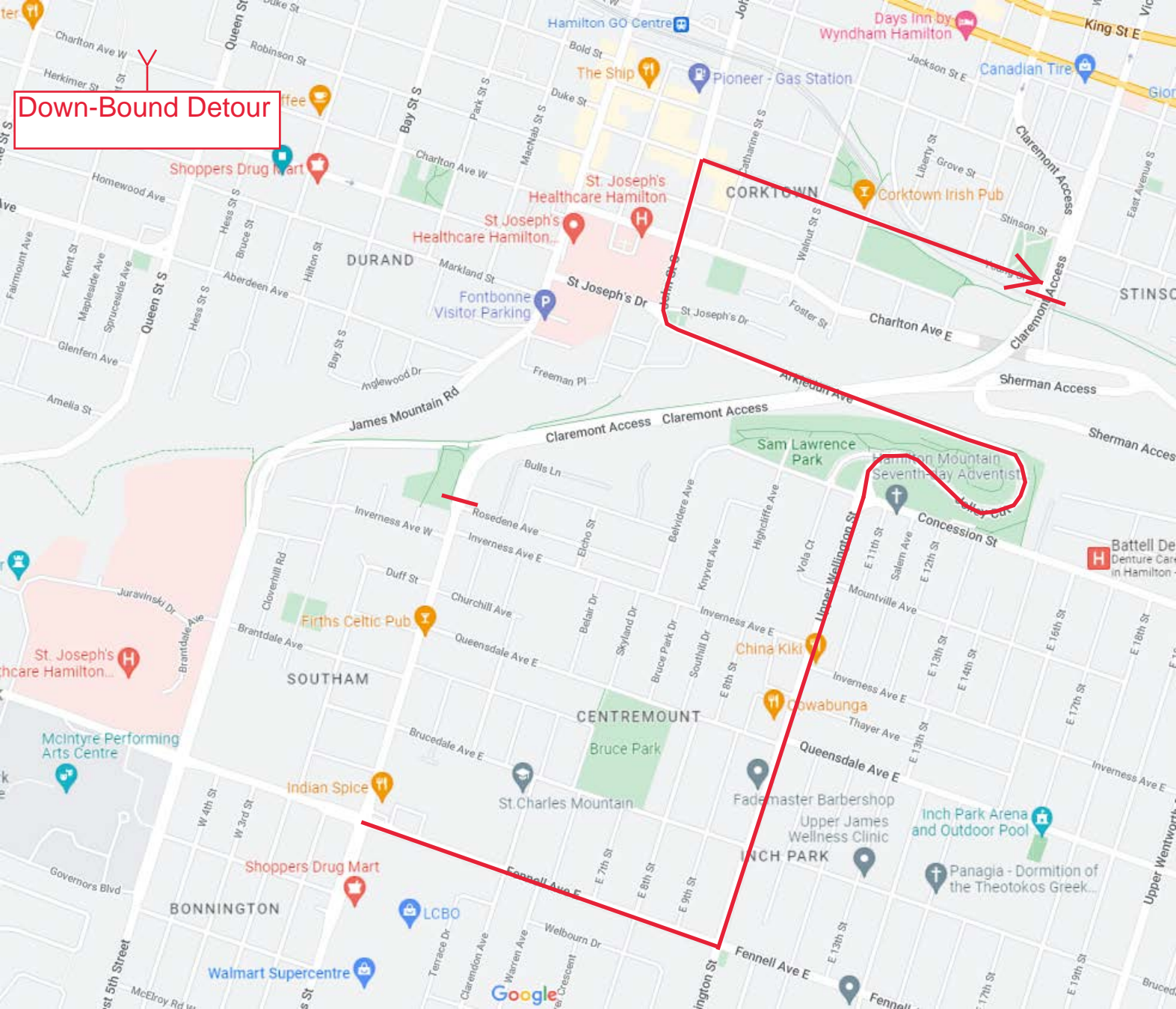
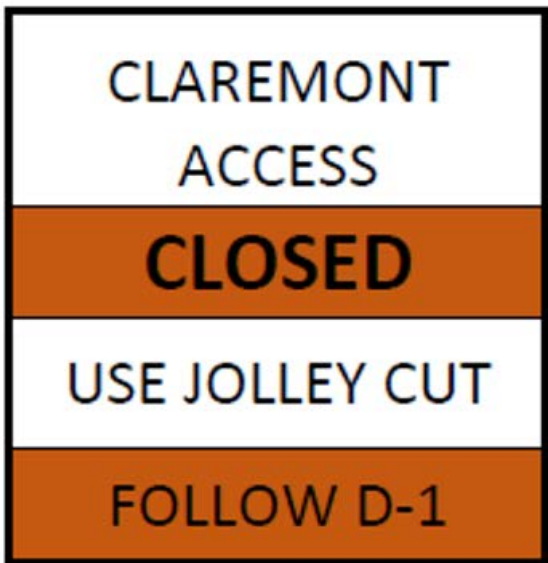


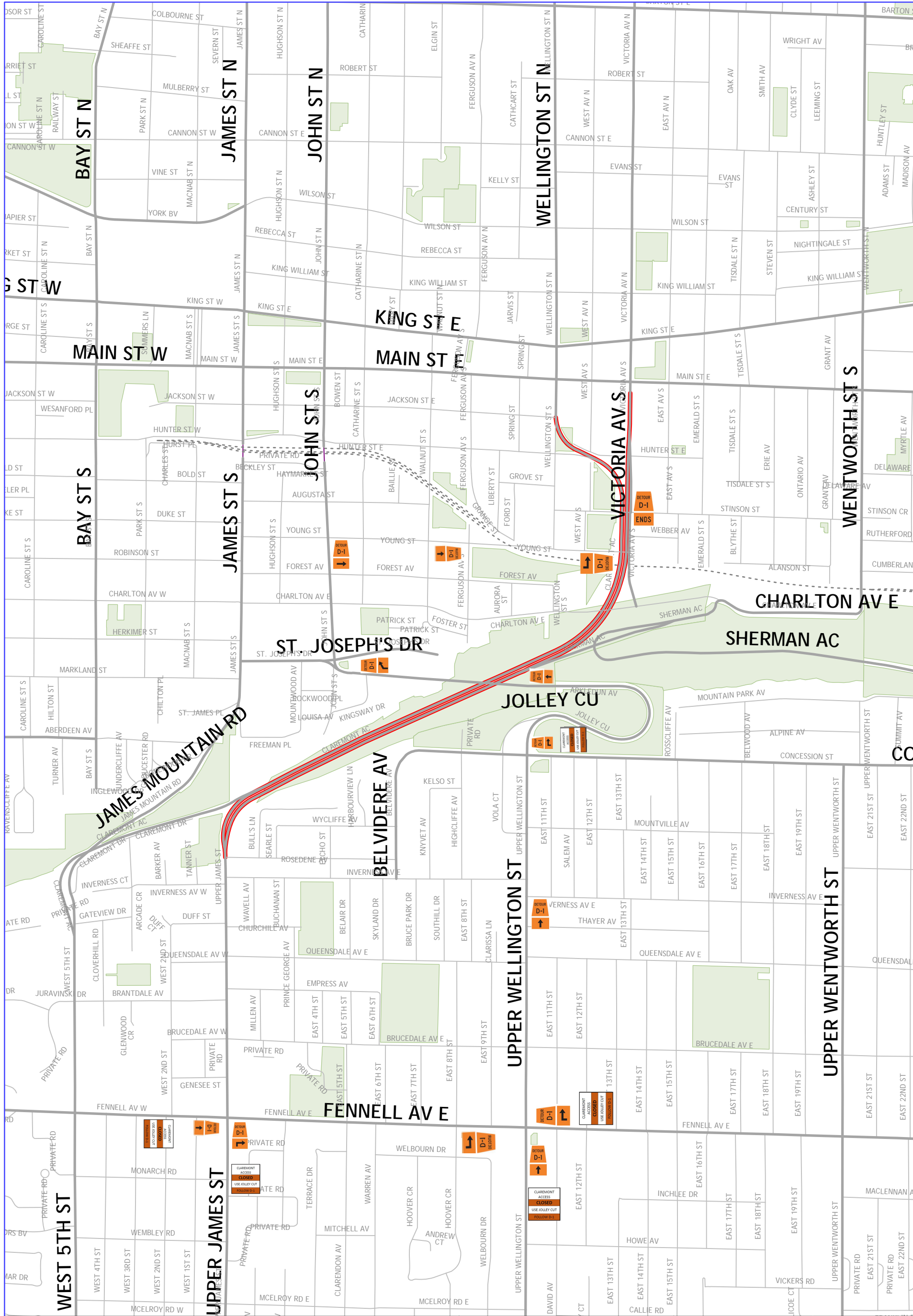
# Down-Bound Detour






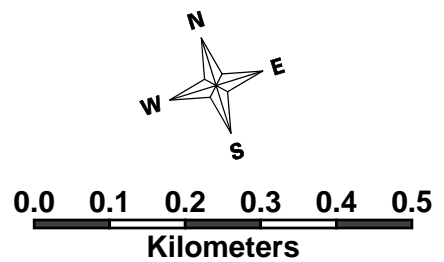
Sign to be 4' x 4'

Number of signs required for  
the project: 5

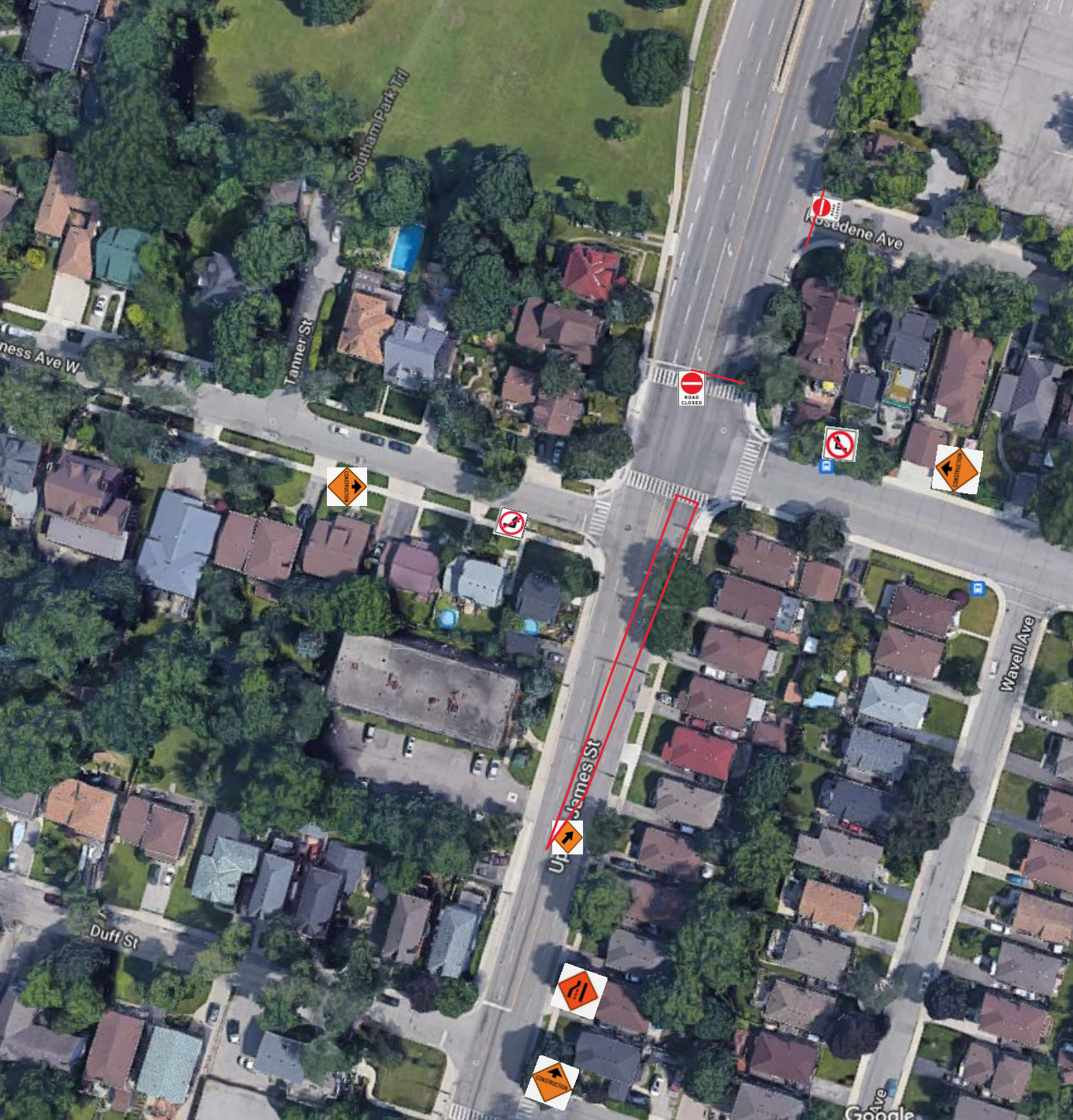


# CLAREMONT ACCESS ROAD CLOSURE

**LEGEND**  
 LIMITS OF ROAD CLOSURE







Rosedene Ave

Tanner St

Southam Park Trl

Business Ave W

James St

Wavell Ave

Duff St

Ave



## UI-8

## Intersection: Near-Side Right or Left Through Lane Closed

## Multi-Lane Undivided

Mobile Operations

Intermittent

Very Short Duration

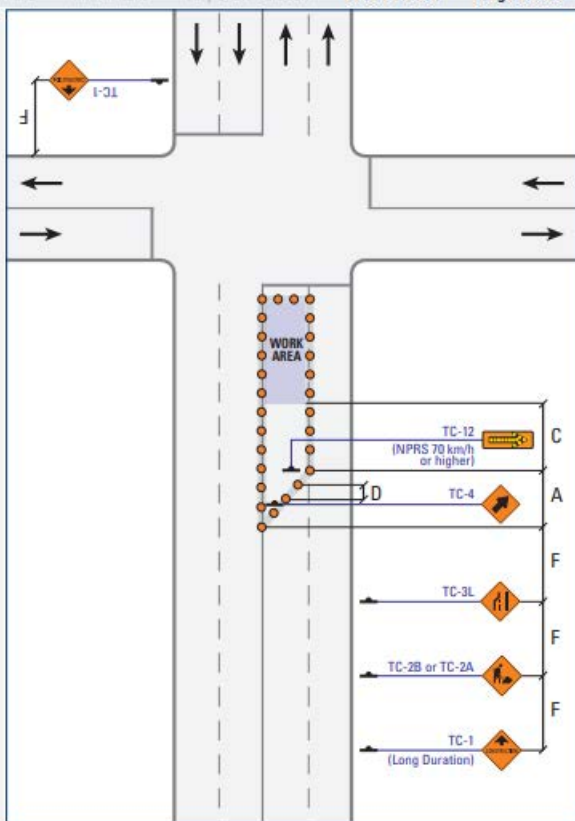
Short Duration

Long Duration

## NOTES

i) Right Through Lane Closed: mirror image (for Markers, TC-12, TC-4).

For further detail on Work Zone components, see [Table B \(Short/Long, pg. 241\)](#)



## Normal Posted Regulatory Speed (km/h)

Label	Description	50	60	70	80	90
<b>A</b>	Taper Length for Full Lane Closure (m)	60	85	155	180	200
<b>C</b>	Longitudinal Buffer Area (LBA) (m)	(30)	(40)	50	60	75
<b>D</b>	Maximum Distance between Markers (m)	6	9	9	12	12
	Minimum Number of Markers for Taper	5	7	9	11	13
<b>F</b>	Distance between Construction Signs (m)	50	90	120	140	150



Place a PVMS board on the east side of Upper James St, 137m north of Mohawk Rd

Message "Claremont Access Closed"



Pho Binh Minh Vietnamese · S Samir Super Market

Royal Bank

Lighthouse Inspections Mississauga/...

Tony's NOFRILLS Hamilton

Hot Dog & Su

Canadian Tire Gas+

Simoniz Touchless Wash

Purolator

Neighbours

Welcome to the Digital Age

Measure distance

Click on the map to add to your path

Total distance: 137.28 m (450.39 ft)

