



STAGE 2 SHORTLISTED PROPOSAL

Title:

Artist:

Conductor
Karen Ho Fatt



Artist Concept Statement

Concept – “Conductor”

The structure envisioned consists of 2 bent steel pipes in a V shape supporting 2 cube forms. Attached to these cubes are 5 ‘pipes’ on either end of two large cable arms. The two arms are offset and connect into a circle at the base. The structure would stand on a concrete surface. The cube is an architectural building block and a unit of a grid, alluding to the City of Hamilton. The cubes are open, the surrounding environment beyond their frames moves as the viewer changes position. These open cubes metaphorically represents the present and future growth of the City. The 5 posts appear to continue infinitely into the ‘distance’ and repeat themselves as they interconnect in many directions. This pattern references ideas of transmission, distribution and expansion. The cube appears ‘invisible’ due to its open structure.

The 5 posts allude to the 5 John’s who were instrumental in bringing Hydroelectric power to the City of Hamilton. The posts also reference electric cables/lines, the means by which AC power is brought into the City.

The central supporting “wave” column alludes to the visionary Nikola Tesla, the source and creator of the AC electric current on which the City is built and from which all power emanates. The structure would consist of metal pipes, welded and shaped into a ‘wave’ of ‘water’ that seems to continue infinitely at either end; referencing the water providing infinite energy to the city as well as continued progress. The wave also alludes to the sine pattern of the AC current and the rise and fall of water associated with hydroelectric dams. The circular base, alludes to the turbines that convert water to electricity.

The ‘cables’ would be made of steel in a copper colour in an AC current wave pattern design laser cut into the pipes. Copper is suggested colour as this is the most common means by which electric current is transmitted. The balance of structure would be aluminum colored to suggest the clarity of water and also aluminum which is used in electrical transmission. The overall balanced and asymmetrical design of the structure embodies Tesla’s “spirit of innovation.”

The contrast of contemporary clean materials and textures creates tension, reflects the surrounding natural environment and the urban environment and industry. The open design also permits the wind to pass through more easily. (The 5 posts may vaguely reference wind power).

The sculpture reflects the social (immigration through movement), environmental (clean sustainable energy), physical (city growth) impact of AC power through abstract representations; materials and shapes of structure as outlined in the paragraphs above. Our changing relationship to energy from the visible to invisible (water power to electric transmission) is addressed through the overall design.

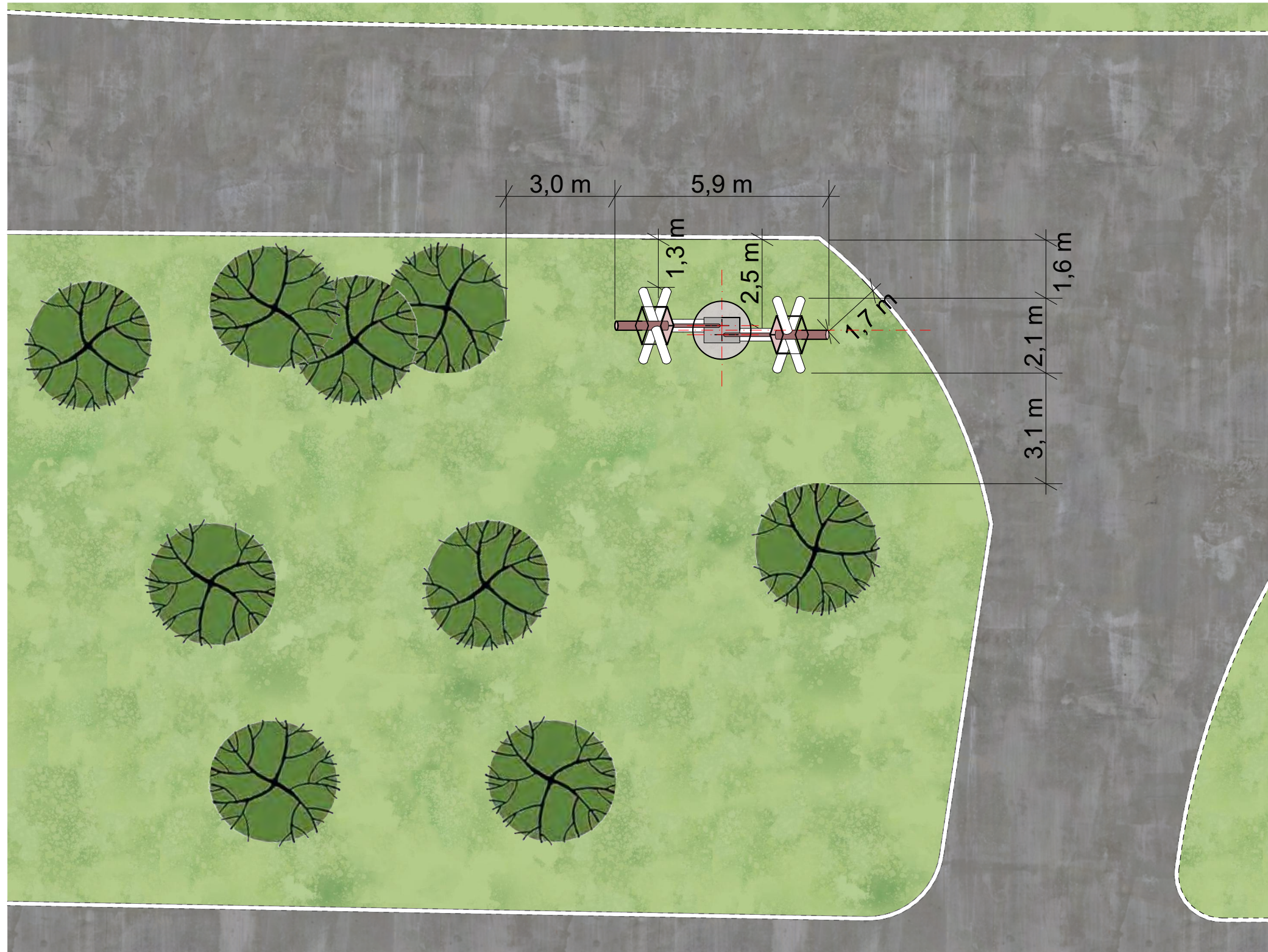
HAMILTON THE ELECTRIC CITY PUBLIC ART

Conductor

Karen Ho Fatt

Site Plan

Site plan
Scale 1:100

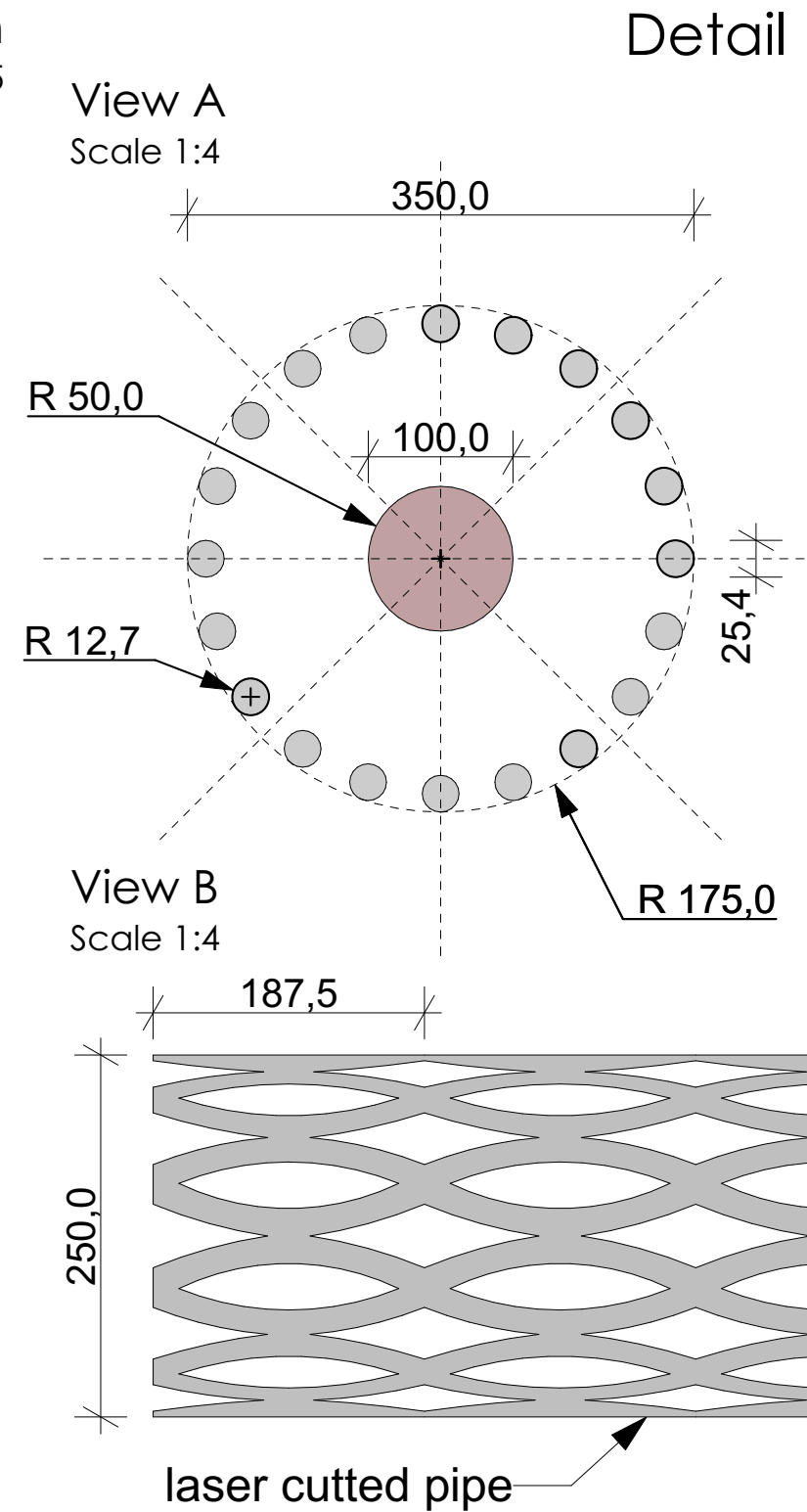
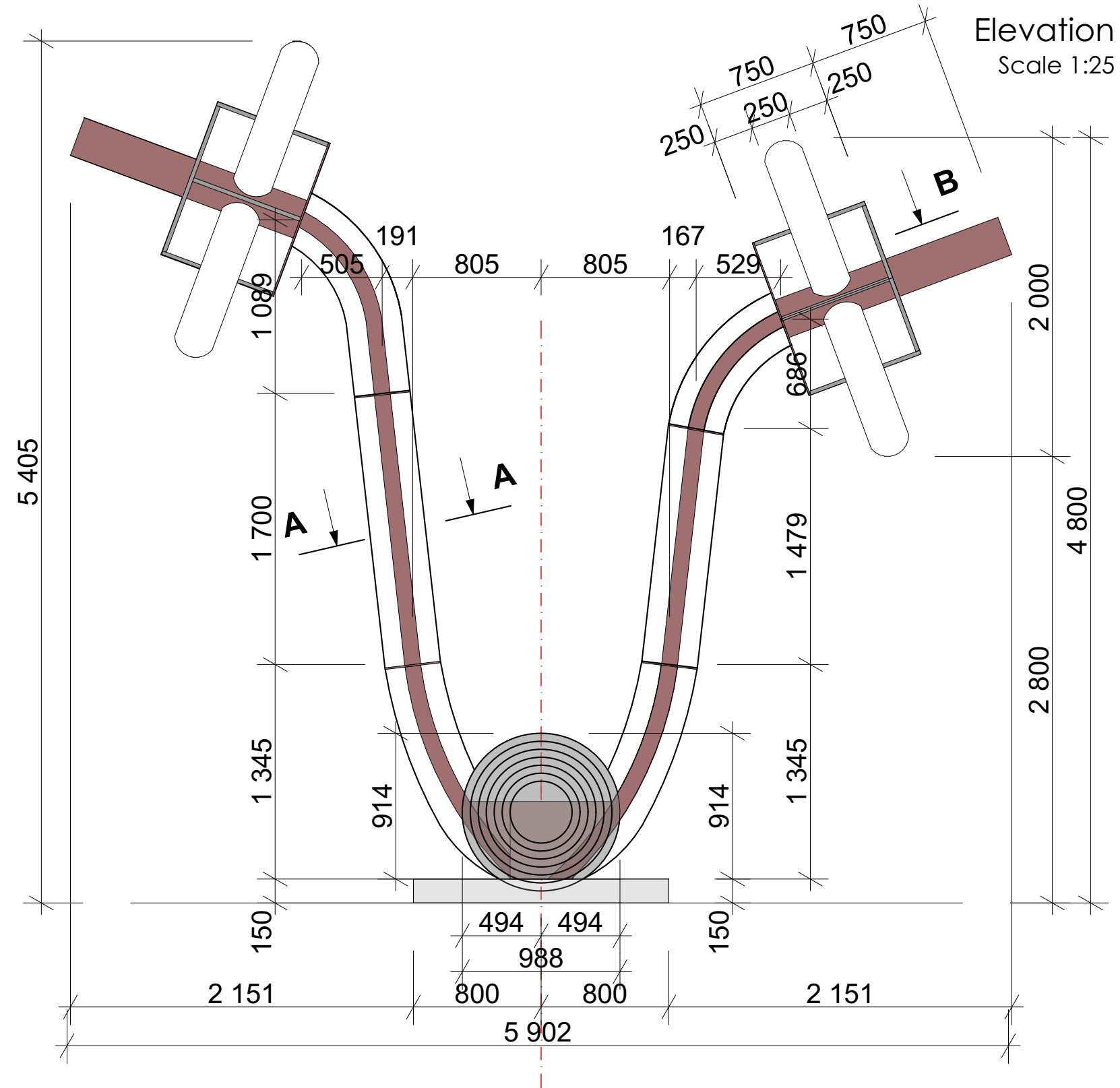


HAMILTON THE ELECTRIC CITY PUBLIC ART

Conductor

Karen Ho Fatt

Elevation and Details



HAMILTON THE ELECTRIC CITY PUBLIC ART

Conductor

Karen Ho Fatt

Rendering

