



STAGE 2 SHORTLISTED PROPOSAL

Title: **Empowered: Hamilton the Electric City**

Artist: **Ted Fullerton**



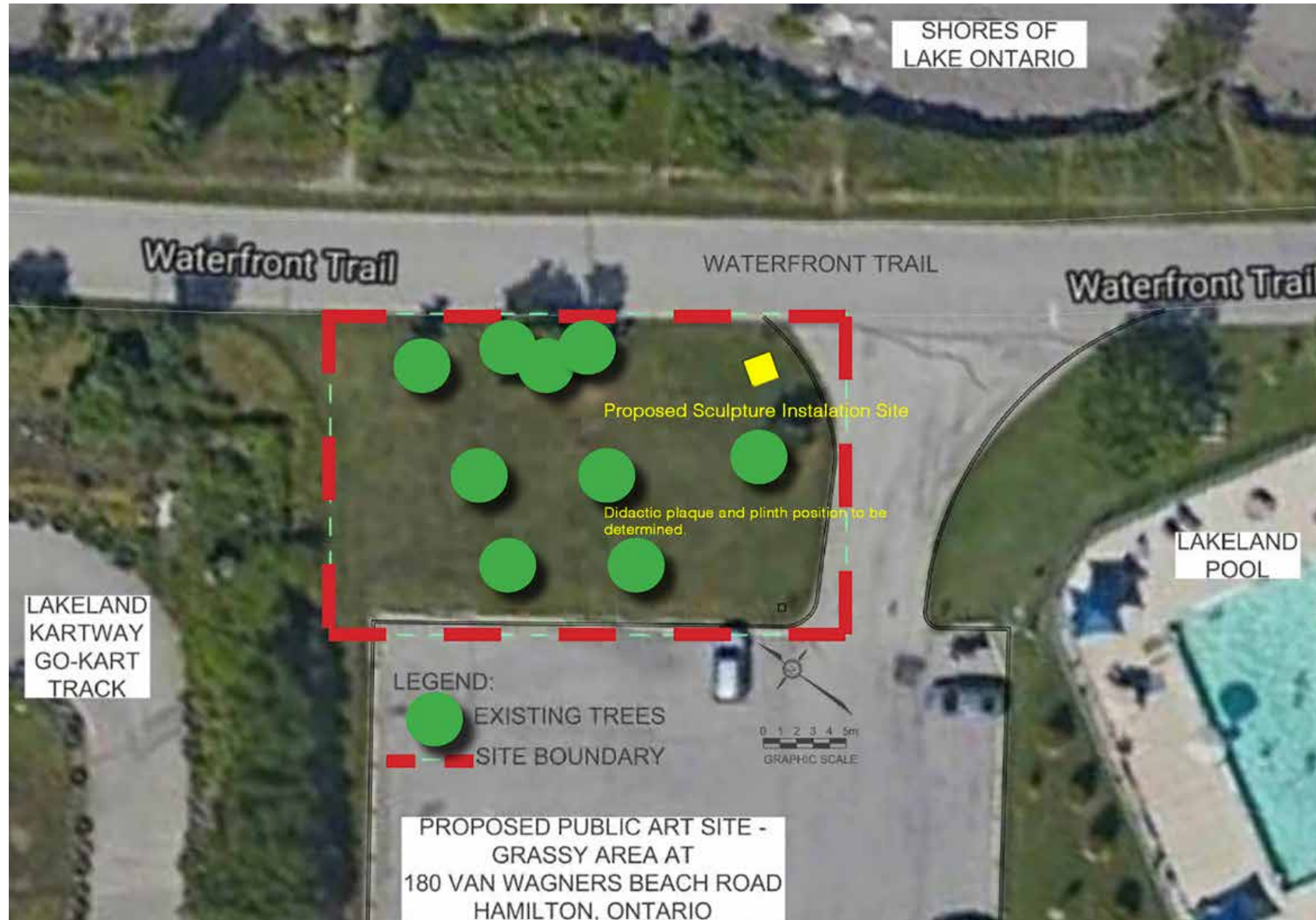
Artist Concept Statement

Empowered: Hamilton the Electric City

This sculpture titled, Empowerment: Hamilton the Electric City is a visual statement that celebrates Hamilton as being internationally recognized as the “Electric City.” Being the first major city in Canada for its innovation, led by 5 entrepreneurs referred to as The Five Johns, Hamilton utilized new technologies that allowed hydro-electricity to be transmitted long distances in a cost-effective way. The sculpture’s title Empowerment is a word that infers the individual and society is more “prosperous” in daily life, “connecting” with how AC power has and continues to be a technology of historical change.

Utilizing an iconic image associated with AC power like an electrical plug while in association to “the figure,” this sculpture implies and speaks emblematically to the individual, cultural growth, expansion and innovation embodied by the inventor Nikola Tesla. Nikola Tesla, inventor and electrical engineer is attributed to the production, transmission and application of electric power. However, the sculpture also draws a parallel with the notion of human “connection.” The title of the sculpture Empowered symbolically implies how electricity has played a significant role within human communication, industry, citizenry, transportation, recreation and leisure while “embracing” the importance of environmental sustainability. Green electricity is suggestively implied by the “spirited” green electric plug placed within an organic, garden-like footprint. Further, the symbolic colour of green is intended to speak to the essence and spirit of human ingenuity, ideals, and environmental stewardship, emphasizing the conviction of a responsive awareness and accountable “connection” with electrical ingenuity and our natural environment.

To contextualize the sculpture regarding the project goals and to convey the history and impact of hydroelectric-AC power in Hamilton, a didactic plaque and plinth will be placed in relation to the sculpture. This will not only give insight and awareness into the sculpture’s symbolic and representational associations but allow a “pedestrian draw” to the sculpture for an additional involved experience, awareness, and appreciation.



HAMILTON THE ELECTRIC CITY PUBLIC ART

Empowered

Ted Fullerton

Elevation and Details

Empowered: Hamilton the Electric City

Digital Concept Drawing - to scale

The total height of this proposed sculpture will be approximately 4.76m (15'4").

The figure will be life size 1.82m (6') cast in bronze with a dark brown and subtle oxidized green patination.

It will be surmounted on a monumental upright standing generic wall plug coloured an earth green.

The total height of the wall plug from grade level (i.e. ground) to the top two metallic coloured prongs will be approximately 2.84m (9'4").

The height of the wall plug from grade level to the bottom of the two prongs will be approximately 2.23m (7'4").

The organic wood fibre footprint will be 3.65m wide by 3.65m in length (12' x 12').



Empowered: Hamilton the Electric City

Digital Concept Drawing - to scale

Total Height of Sculpture:
Approximately
4.76m (15' 4")

Cast Bronze Figure:
Height: 1.82m (6')

Two 1.90cm (.75") diameter stainless steel pins 10.16cm (4") long extend down from the interior underside of the sculptures feet connecting to the two plug prongs.

Prongs:
Height: 60.96cm (2')
Length: 5.08cm (2")
Width: 30.48cm (12")

Plug Length:
0.91m (3')

Plug Width:
0.76m (2.5')

Height from Bottom of Prongs to Grade Level:
2.23m (7' 4")

Plug Cord (e.g. two hollow internal steel tubes above grade level):
Height: 2.13m (7')
Width of single tube: 15.24cm (6")
Width of both tubes: 30.48cm (12")

Concrete Footing:
Height: 30.48cm (1')
Length: 1.82m (6')
Width: 1.82m (6')

Engineered Wood Fibre with Border (below grade level):
Depth: 30.48cm (12")
Length: 3.65m (12')
Width: 3.65m (12')



HAMILTON THE ELECTRIC CITY PUBLIC ART

Empowered

Ted Fullerton

Elevation and Details

Empowered: Hamilton the Electric City

Digital Concept Drawing - to scale

Cast Bronze Figure:

1.82m (6')
Two Stainless steel pins 10.16cm (4") long extending down from the interior underside of the sculptures feet.

Two Plug Prongs:

5.08cm (2") L
30.48cm (12") W
60.96cm (2') H

Steel Plate A:

0.91m (3') L
0.76m (2.5') W
5.08cm (2") H

Steel Plate B:

0.91m (3') L
0.76m (2.5') W
5.08cm (2") H
Note: 2% cross slope for rain runoff.

Plug Wire:

Two round HSS tubes - 2.13m (7') H above grade
5.24cm (6") D
0.95cm (0.38") T
Both structural tubes that comprise the wall plug wire will be welded together with a combined width of 30.48cm (12").

30.48cm (12") H of compressed woodchips (EWF) with geotextile landscape fabric and loose fill pea gravel on compacted sub-base.

Engineered Wood Fibre Footprint:

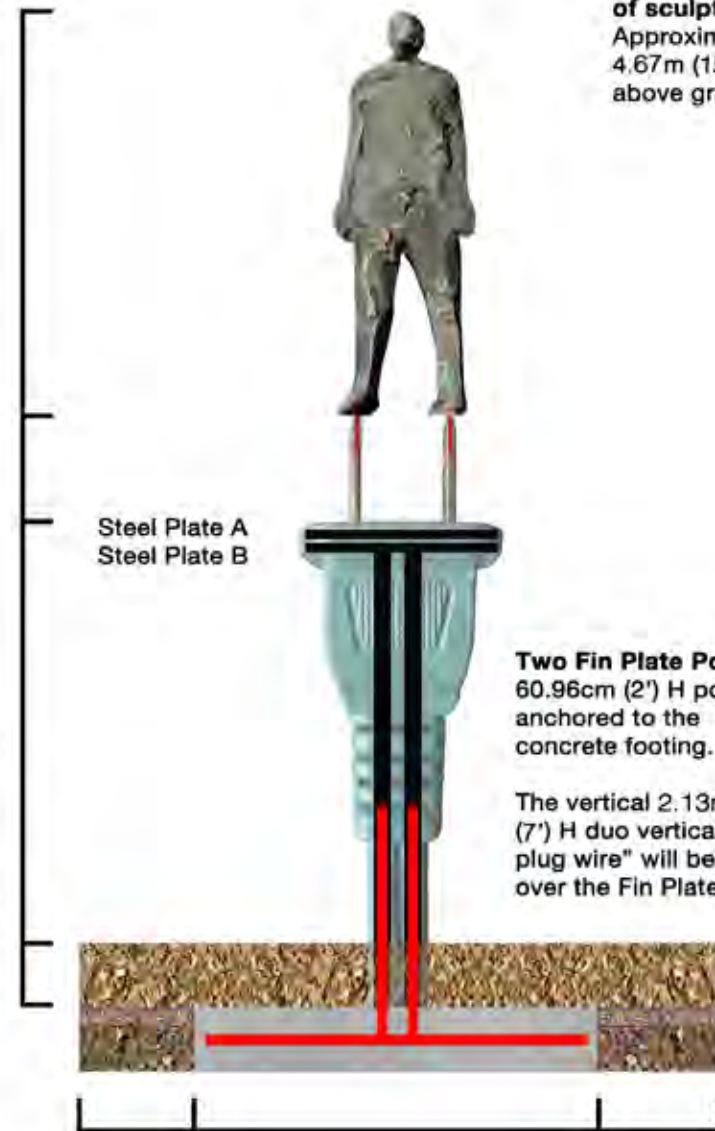
30.48 (12") H x 3.65m (12') L x 3.65m (12') W

Concrete Footing:

1.82m (6') L x 1.82m (6') W x 30.48cm (1') H

Total Height of sculpture:

Approximately 4.67m (15'4") above grade



Wall Plug Structural Schematic

Digital Concept Drawing - to scale.

Total Height of Wall Plug:

2.84m (9' 4") above grade

Plug Prongs:

5.08cm (2") L
30.48cm (12") W
60.96cm (2') H

Prongs are spaced 45.72cm (18") W apart from each other.

Steel Plate A:

(with oval corners)
0.91m (3') L
0.76m (2.5') W
5.08cm (2") H

Steel Plate B:

(with oval corners)
Consisting of two vertical steel armature tubes welded to Plate B with 2% cross slope for rain runoff.
0.91m (3') L
0.76m (2.5') W
5.08cm (2") H

Plug Wire (HSS Structural Tubes):

Two round tubes that comprise the armature will be welded together:
2.13m (7') H - above grade.
0.95cm (0.38") T
15.24cm (6") D
Combined Width: 30.48cm (12")

Two holes will be drilled at the top of each steel plug prong allowing the connection of the sculpture figure:
2.54cm (1") D
10.16cm (4") L

Extended SS pins will be inserted to securely surmount the bronze figure:
1.90cm (3/4") D

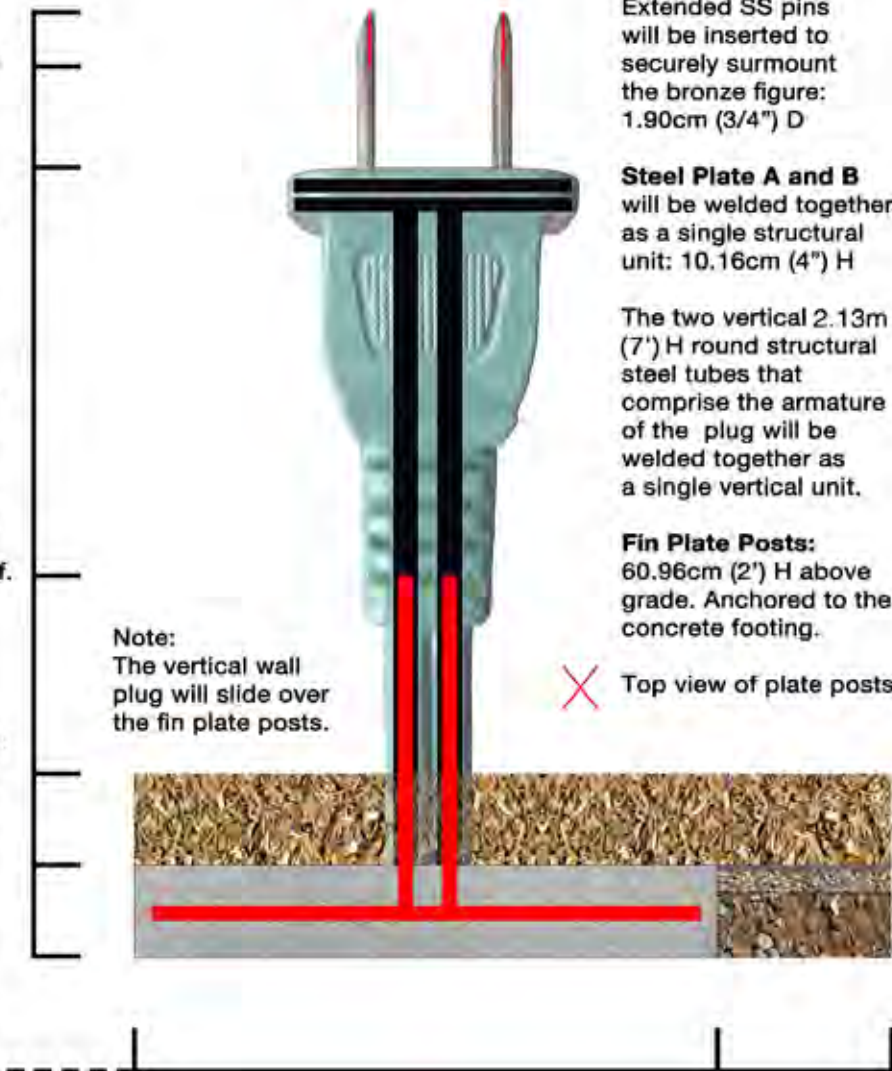
Steel Plate A and B will be welded together as a single structural unit: 10.16cm (4") H

The two vertical 2.13m (7') H round structural steel tubes that comprise the armature of the plug will be welded together as a single vertical unit.

Fin Plate Posts:
60.96cm (2') H above grade. Anchored to the concrete footing.

Note:
The vertical wall plug will slide over the fin plate posts.

Top view of plate posts.



Wood Fibre Footprint: 30.48 (12") H x 3.65m (12') L x 3.65m (12') W

Concrete Footing: 1.82m (6') L x 1.82m (6') W x 30.48cm (1') H

HAMILTON THE ELECTRIC CITY PUBLIC ART

Empowered

Ted Fullerton

Rendering

