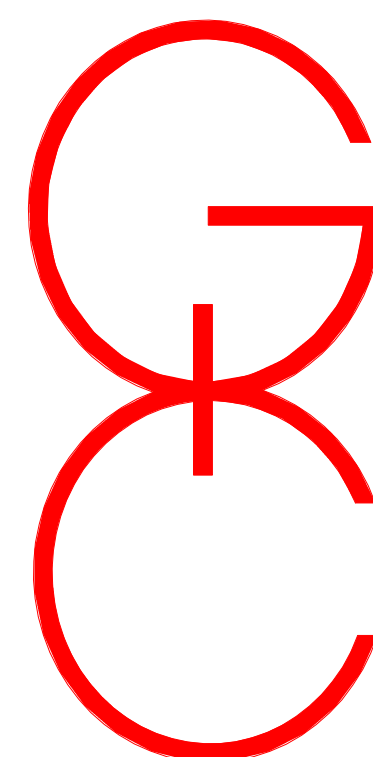


PROPOSED DEVELOPMENT
48 FERGUSON STREET
THE HI-RISE GROUP INC.

HAMILTON

ONTARIO



GRAZIANI
+
CORAZZA
ARCHITECTS INC.

8400 JANE STREET, BUILDING D - SUITE 300 CONCORD, ON L4K 4L8
T. 905.795.2601 F. 905.795.2844 WWW.GC-ARCHITECTS.COM

CLIENT:

The Hi-Rise Group Inc.

25 Imperial Street, Suite 200,
Toronto, Ontario
M5P 1R9

T. 416 484 1230

PLANNER:

Urban Solutions Planning &
Land development Consultants Inc.

3 Studebaker, Unit 1
Hamilton, Ontario
L8L 0C8

T. 905 546 1087

ARCHITECT:

Graziani + Corazza Architects Inc.

8400 Jane St. Building D-Suite 300
Concord, Ontario
L4K 4L8
T. 905 795 2601
F. 905 795 2844

LANDSCAPE ARCHITECT:

Whitehouse Urban Design

3 Studebaker Place, Unit 1
Hamilton, ON
L8L 0C8

T. 905 546 1087

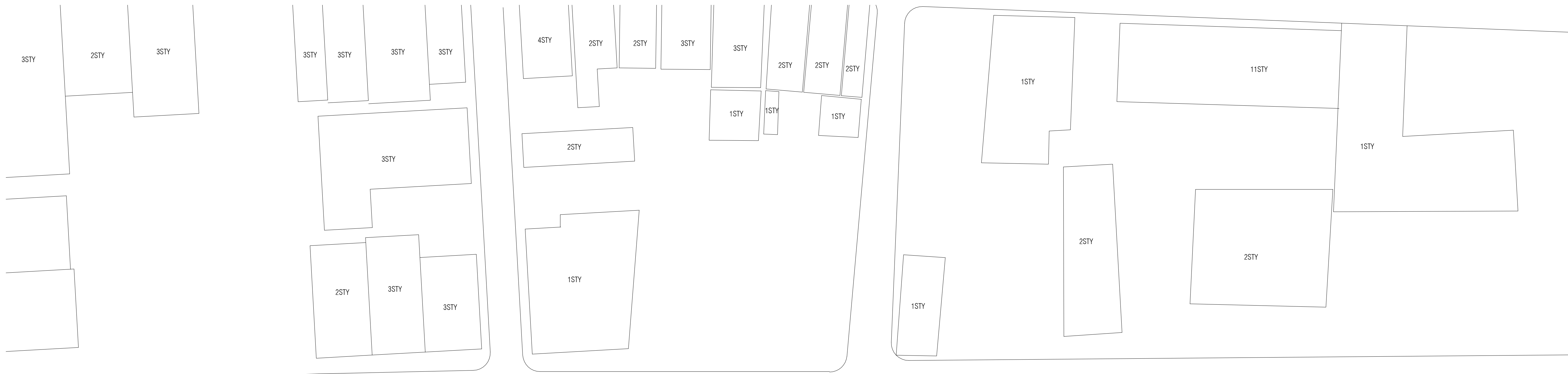
SURVEYOR:

A.T. McLaren Limited

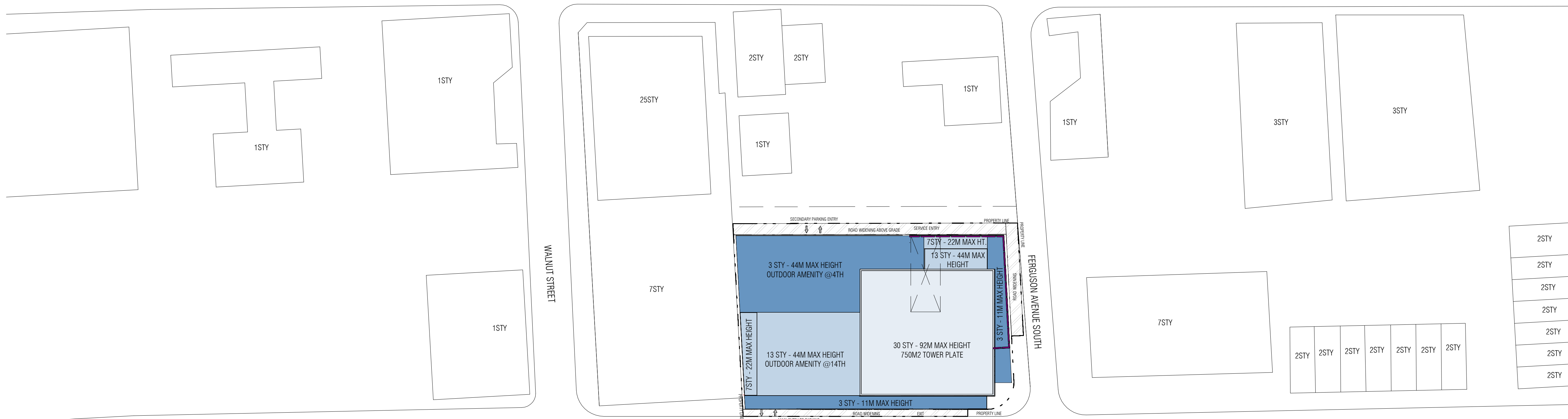
69 John Street South, Suite 230
Hamilton, Ontario
L8N 2B9

T. 905 527 8559

TRANSPORTATION:



MAIN STREET



JACKSON STREET



THIS DRAWING, AS AN INSTRUMENT OF SERVICE, IS PROVIDED BY AND IS THE PROPERTY OF GRAZIANI + CORAZZA ARCHITECTS INC. THE CONTRACTOR MUST VERIFY AND ACCEPT RESPONSIBILITY FOR ALL DIMENSIONS AND CONDITIONS ON SITE AND MUST NOTIFY GRAZIANI + CORAZZA ARCHITECTS INC. OF ANY VARIATIONS FROM THE SUPPLIED INFORMATION. GRAZIANI + CORAZZA ARCHITECTS INC. IS NOT RESPONSIBLE FOR THE ACCURACY OF SURVEY, STRUCTURAL, MECHANICAL, ELECTRICAL, ETC. ENGINEERING INFORMATION SHOWN ON THIS DRAWING. REFER TO THE APPROPRIATE ENGINEERING DRAWINGS BEFORE PROCEEDING WITH THE WORK. CONSTRUCTION MUST CONFORM TO ALL APPLICABLE CODES AND REQUIREMENTS OF THE AUTHORITIES HAVING JURISDICTION, UNLESS OTHERWISE NOTED. NO INVESTIGATION HAS BEEN UNDERTAKEN OR REPORTED ON BY THIS OFFICE IN REGARDS TO THE ENVIRONMENTAL CONDITION OF THIS SITE.

THIS DRAWING IS NOT TO BE SCALED. ALL ARCHITECTURAL SYMBOLS INDICATED ON THIS DRAWING ARE GRAPHIC REPRESENTATIONS ONLY. THIS DRAWING IS NOT TO BE USED FOR CONSTRUCTION PURPOSES UNTIL COUNTERSIGNED BY THE ARCHITECT.

CONDITIONS FOR ELECTRONIC INFORMATION TRANSFER:

ELECTRONIC INFORMATION IS SUPPLIED TO THE OTHER ASSOCIATED FIRMS TO ASSIST THEM IN THE EXECUTION OF THEIR WORK/REVIEW. THE RECIPIENT FIRMS MUST DETERMINE THE COMPLETENESS/APPROPRIATENESS/RELEVANCE OF THE INFORMATION IN RESPECT TO THEIR PARTICULAR RESPONSIBILITY.

GRAZIANI + CORAZZA ARCHITECTS INC. SHALL NOT BE RESPONSIBLE FOR:
 1. ERRORS, OMISSIONS, INCOMPLETENESS DUE TO LOSS OF INFORMATION IN WHOLE OR PART WHEN INFORMATION IS TRANSFERRED.
 2. TRANSMISSION OF ANY VIRUS OR DAMAGE TO THE RECEIVING ELECTRONIC SYSTEM WHEN INFORMATION IS TRANSFERRED.

Issuances

1	Jun.23.2023	Issued for DRP	BG
---	-------------	----------------	----

Issued for revisions

**GRAZIANI
CORAZZA
ARCHITECTS**

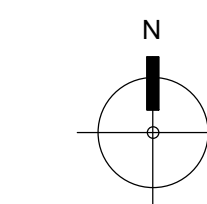
8400 JANE STREET, BUILDING D SUITE 300, CONCORD, ONTARIO L4V 4J8
 PHONE: 905.755.2801 FAX: 905.755.2844 WWW.GC-ARCHITECTS.COM

PROPOSED MIXED USE DEVELOPMENT

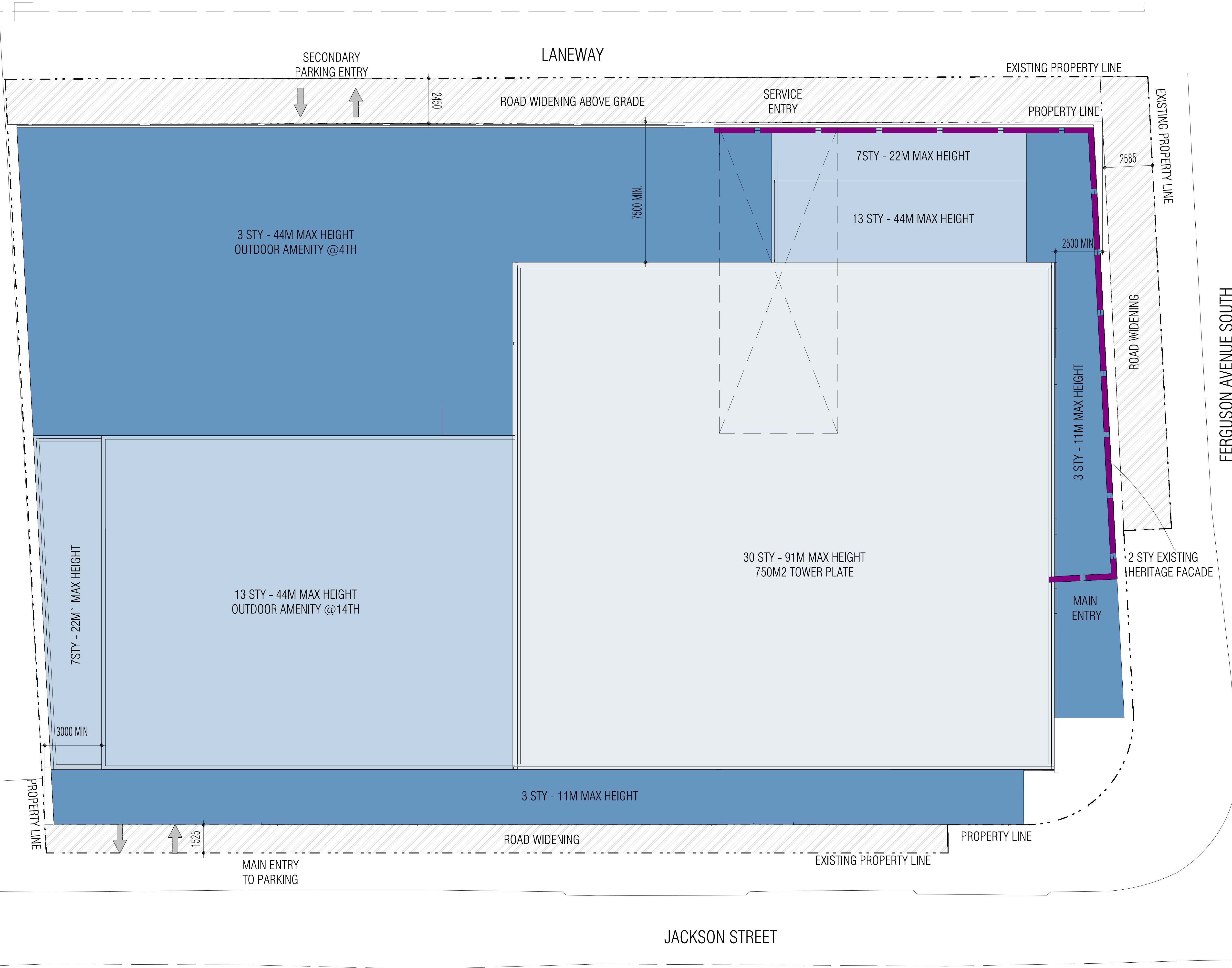
48 FERGUSON AVE SOUTH

Project Architect: B.Graziani
 Assistant Designer: R.Lincoln
 Drawn By: D.Arora
 Checked By: Checker
 Plot Date: JUNE.26.2023
 Job #: 2055.22

CONTEXT PLAN



1:500 A.100



THIS DRAWING, AS AN INSTRUMENT OF SERVICE, IS PROVIDED BY AND IS THE PROPERTY OF GRAZIANI + CORAZZA ARCHITECTS INC. THE CONTRACTOR MUST VERIFY AND ACCEPT RESPONSIBILITY FOR ALL DIMENSIONS AND CONDITIONS ON SITE AND MUST NOTIFY GRAZIANI + CORAZZA ARCHITECTS INC. OF ANY VARIATIONS FROM THE SUPPLIED INFORMATION. GRAZIANI + CORAZZA ARCHITECTS INC. IS NOT RESPONSIBLE FOR THE ACCURACY OF SURVEY, STRUCTURAL, MECHANICAL, ELECTRICAL, ETC. ENGINEERING INFORMATION SHOWN ON THIS DRAWING. REFER TO THE APPROPRIATE ENGINEERING DRAWINGS BEFORE PROCEEDING WITH THE WORK. CONSTRUCTION MUST CONFORM TO ALL APPLICABLE CODES AND REQUIREMENTS OF THE AUTHORITIES HAVING JURISDICTION, UNLESS OTHERWISE NOTED. NO INVESTIGATION HAS BEEN UNDERTAKEN OR REPORTED ON BY THIS OFFICE IN REGARD TO THE ENVIRONMENTAL CONDITION OF THIS SITE.

THIS DRAWING IS NOT TO BE SCALED. ALL ARCHITECTURAL SYMBOLS INDICATED ON THIS DRAWING ARE GRAPHIC REPRESENTATIONS ONLY. THIS DRAWING IS NOT TO BE USED FOR CONSTRUCTION PURPOSES UNTIL COUNTERSIGNED BY THE ARCHITECT.

CONDITIONS FOR ELECTRONIC INFORMATION TRANSFER:

ELECTRONIC INFORMATION IS SUPPLIED TO THE OTHER ASSOCIATED FIRMS TO ASSIST THEM IN THE EXECUTION OF THEIR WORK/REVIEW. THE RECIPIENT FIRMS MUST DETERMINE THE COMPLETENESS, APPROPRIATENESS, RELEVANCE, OF THE INFORMATION IN RESPECT TO THEIR PARTICULAR RESPONSIBILITY.

GRAZIANI + CORAZZA ARCHITECTS INC. SHALL NOT BE RESPONSIBLE FOR:

1. ERRORS, OMISSIONS, INCOMPLETENESS DUE TO LOSS OF INFORMATION IN WHOLE OR PART WHEN INFORMATION IS TRANSFERRED.
2. TRANSMISSION OF ANY VIRUS OR DAMAGE TO THE RECEIVING ELECTRONIC SYSTEM WHEN INFORMATION IS TRANSFERRED.

Issues:

1 Jun.23.2023 Issued for DRP BG

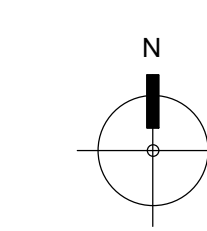
Issued for revisions

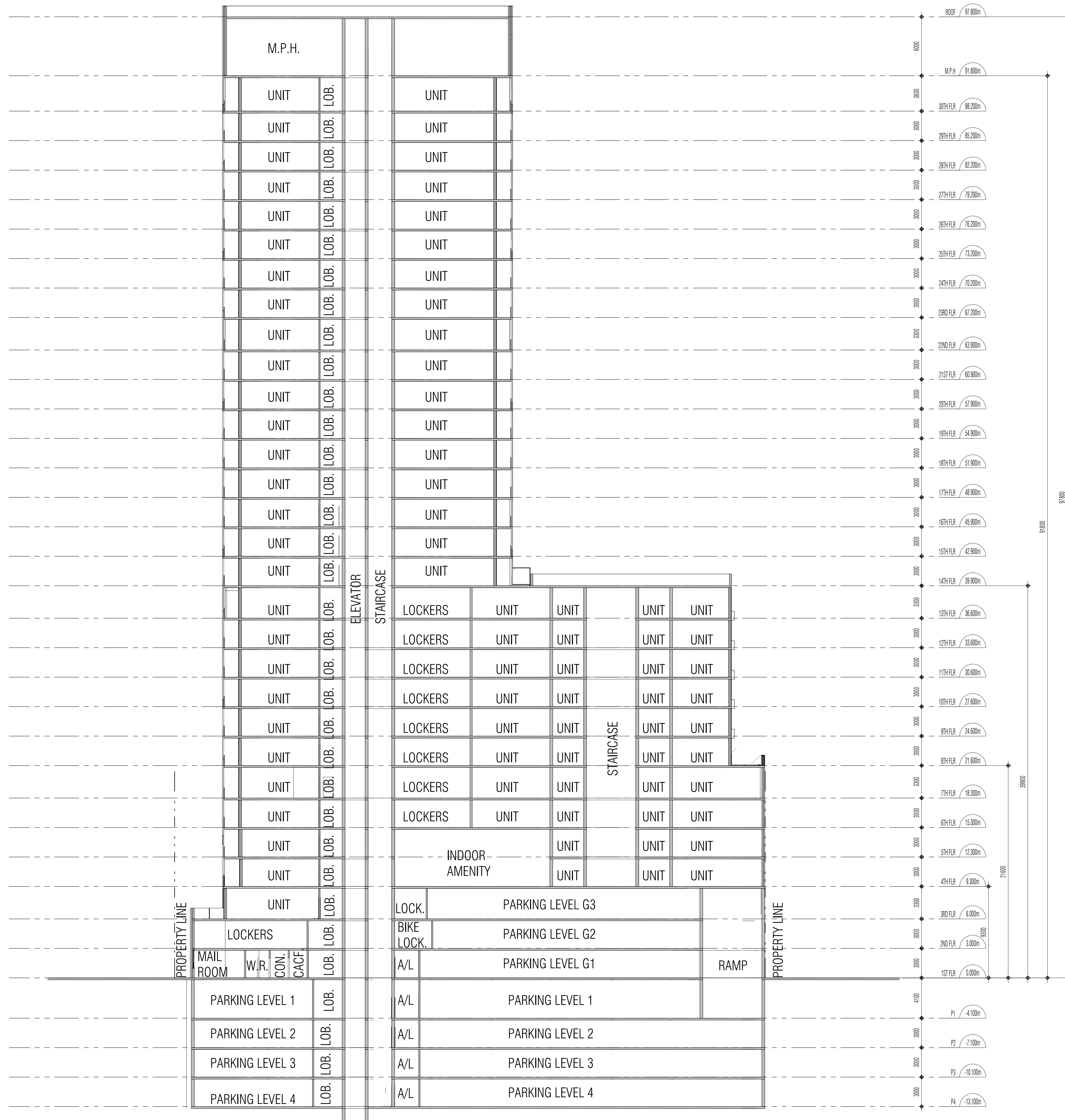
 <p>GRAZIANI CORAZZA ARCHITECTS</p>	+	+
<p>8400 JANE STREET, BUILDING D SUITE 300, CONCORD, ONTARIO L4V 4L8 PHONE: 905.755.2801 FAX: 905.755.2844 WWW.GC-ARCHITECTS.COM</p>	+	+

PROPOSED MIXED USE DEVELOPMENT
48 FERGUSON AVE SOUTH

Project Architect: B.Graziani
 Assistant Designer: R.Lincoln
 Drawn By: D.Arora
 Checked By: Checker
 Plot Date: JUNE.26.2023
 Job #: 2055.22

SITE PLAN
 1:100 A.101





THIS DRAWING, AS AN INSTRUMENT OF SERVICE, IS PROVIDED BY AND IS THE PROPERTY OF GRAZIANI + CORAZZA ARCHITECTS INC. THE CONTRACTOR MUST VERIFY AND ACCEPT RESPONSIBILITY FOR ALL DIMENSIONS AND CONDITIONS ON SITE AND MUST NOTIFY GRAZIANI + CORAZZA ARCHITECTS INC. OF ANY VARIATIONS FROM THE SUPPLIED INFORMATION. GRAZIANI + CORAZZA ARCHITECTS INC. IS NOT RESPONSIBLE FOR THE ACCURACY OF SURVEY, STRUCTURAL, MECHANICAL, ELECTRICAL, ETC. ENGINEERING INFORMATION SHOWN ON THIS DRAWING. REFER TO THE APPROPRIATE ENGINEERING DRAWINGS BEFORE PROCEEDING WITH THE WORK. CONSTRUCTION MUST CONFORM TO ALL APPLICABLE CODES AND REQUIREMENTS OF THE AUTHORITIES HAVING JURISDICTION, UNLESS OTHERWISE NOTED. NO INVESTIGATION HAS BEEN UNDERTAKEN OR REPORTED ON BY THIS OFFICE IN REGARD TO THE ENVIRONMENTAL CONDITION OF THIS SITE.

THIS DRAWING IS NOT TO BE SCALED. ALL ARCHITECTURAL SYMBOLS INDICATED ON THIS DRAWING ARE GRAPHIC REPRESENTATIONS ONLY. THIS DRAWING IS NOT TO BE USED FOR CONSTRUCTION PURPOSES UNTIL COUNTERSIGNED BY THE ARCHITECT.

CONDITIONS FOR ELECTRONIC INFORMATION TRANSFER:

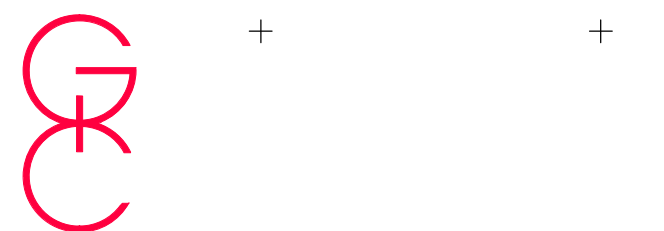
ELECTRONIC INFORMATION IS SUPPLIED TO THE OTHER ASSOCIATED FIRMS TO ASSIST THEM IN THE EXECUTION OF THEIR WORK/REVIEW. THE RECIPIENT FIRMS MUST DETERMINE THE COMPLETENESS/APPROPRIATENESS/RELEVANCE OF THE INFORMATION IN RESPECT TO THEIR PARTICULAR RESPONSIBILITY.

GRAZIANI + CORAZZA ARCHITECTS INC. SHALL NOT BE RESPONSIBLE FOR:
 1. ERRORS, OMISSIONS, INCOMPLETENESS DUE TO LOSS OF INFORMATION IN WHOLE OR PART WHEN INFORMATION IS TRANSFERRED.
 2. TRANSMISSION OF ANY VIRUS OR DAMAGE TO THE RECEIVING ELECTRONIC SYSTEM WHEN INFORMATION IS TRANSFERRED.

Issues:

1 Jun.23.2023 Issued for DRP BG

Issued for revisions



**GRAZIANI
CORAZZA
ARCHITECTS**

8400 JANE STREET, BUILDING D SUITE 300, CONCORD, ONTARIO L4V 4L8 L4V 4L8
 PHONE: 905.755.2801 FAX: 905.755.2844 WWW.GC-ARCHITECTS.COM

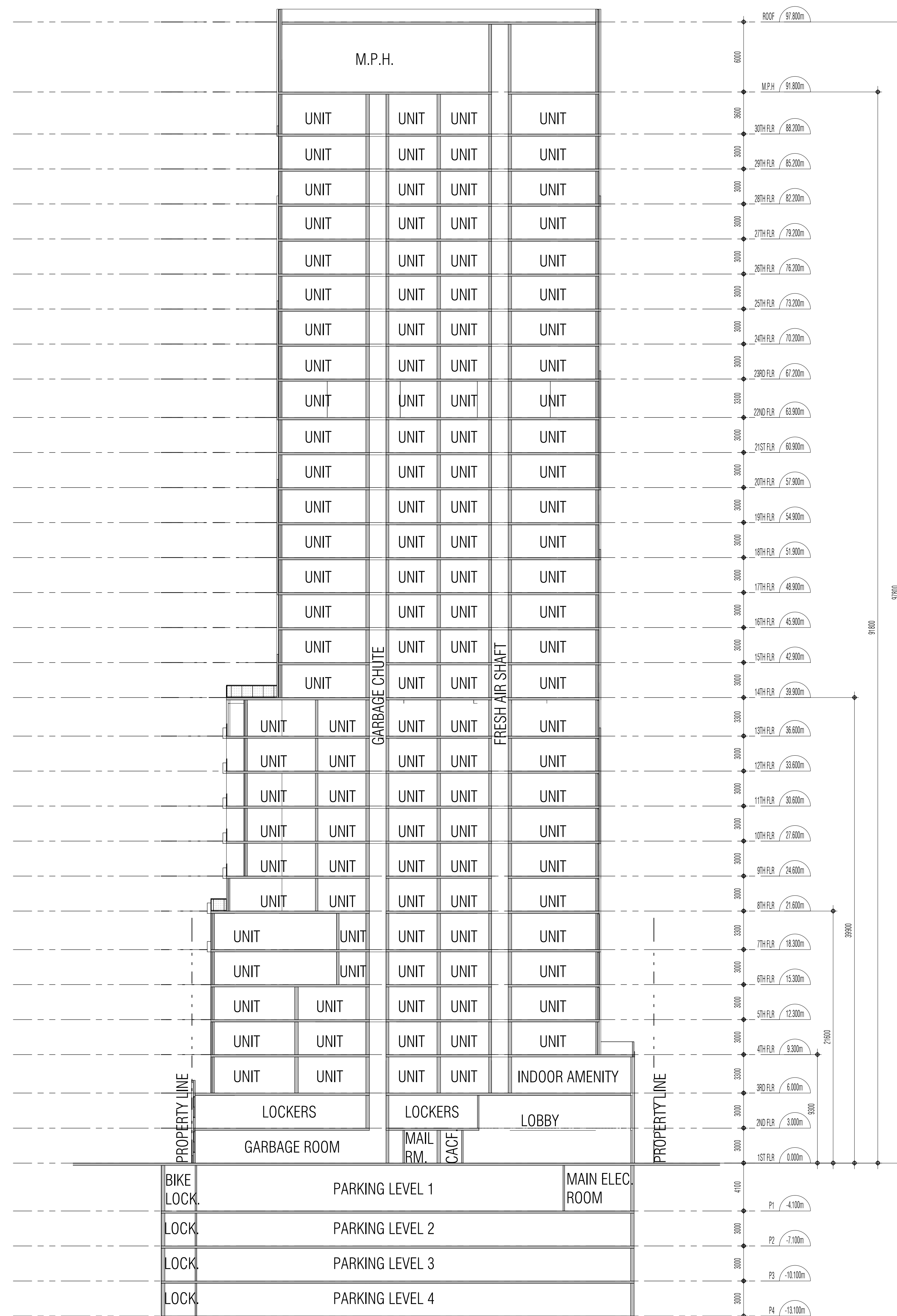
PROPOSED MIXED USE DEVELOPMENT

48 FERGUSON AVE SOUTH

Project Architect: B.Graziani
 Assistant Designer: R.Lincoln
 Drawn By: D.Arora
 Checked By: Checker
 Plot Date: JUNE.26.2023
 Job #: 2055.22

SECTION A-A

1:200 A.501



THIS DRAWING, AS AN INSTRUMENT OF SERVICE, IS PROVIDED BY AND IS THE PROPERTY OF GRAZIANI + CORAZZA ARCHITECTS INC. THE CONTRACTOR MUST VERIFY AND ACCEPT RESPONSIBILITY FOR ALL DIMENSIONS AND CONDITIONS ON SITE AND MUST NOTIFY GRAZIANI + CORAZZA ARCHITECTS INC. OF ANY VARIATIONS FROM THE SUPPLIED INFORMATION. GRAZIANI + CORAZZA ARCHITECTS INC. IS NOT RESPONSIBLE FOR THE ACCURACY OF SURVEY, STRUCTURAL, MECHANICAL, ELECTRICAL, ETC., ENGINEERING INFORMATION SHOWN ON THIS DRAWING. REFER TO THE APPROPRIATE ENGINEERING DRAWINGS BEFORE PROCEEDING WITH THE WORK. CONSTRUCTION MUST CONFORM TO ALL APPLICABLE CODES AND REQUIREMENTS OF THE AUTHORITIES HAVING JURISDICTION, UNLESS OTHERWISE NOTED. NO INVESTIGATION HAS BEEN UNDERTAKEN OR REPORTED ON BY THIS OFFICE IN REGARD TO THE ENVIRONMENTAL CONDITION OF THIS SITE.

THIS DRAWING IS NOT TO BE SCALED. ALL ARCHITECTURAL SYMBOLS INDICATED ON THIS DRAWING ARE GRAPHIC REPRESENTATIONS ONLY. THIS DRAWING IS NOT TO BE USED FOR CONSTRUCTION PURPOSES UNTIL COUNTERSIGNED BY THE ARCHITECT.

CONDITIONS FOR ELECTRONIC INFORMATION TRANSFER:

ELECTRONIC INFORMATION IS SUPPLIED TO THE OTHER ASSOCIATED FIRMS TO ASSIST THEM IN THE EXECUTION OF THEIR WORK/REVIEW. THE RECIPIENT FIRMS MUST DETERMINE THE COMPLETENESS/APPROPRIATENESS/RELEVANCE OF THE INFORMATION IN RESPECT TO THEIR PARTICULAR RESPONSIBILITY.

GRAZIANI + CORAZZA ARCHITECTS INC. SHALL NOT BE RESPONSIBLE FOR:
 1. ERRORS, OMISSIONS, INCOMPLETENESS DUE TO LOSS OF INFORMATION IN WHOLE OR PART WHEN INFORMATION IS TRANSFERRED.
 2. TRANSMISSION OF ANY VIRUS OR DAMAGE TO THE RECEIVING ELECTRONIC SYSTEM WHEN INFORMATION IS TRANSFERRED.

Issues

1	Jun.23.2023	Issued for DRP	BG
---	-------------	----------------	----

Issued for revisions

**GRAZIANI
CORAZZA
ARCHITECTS**

8400 JANE STREET, BUILDING D SUITE 300, CONCORD, ONTARIO L4K 4L8
 PHONE: 905.755.2801 FAX: 905.755.2844 WWW.GC-ARCHITECTS.COM

PROPOSED MIXED USE DEVELOPMENT

48 FERGUSON AVE SOUTH

Project Architect:	B. Graziani
Assistant Designer:	R. Lincoln
Drawn By:	D. Arora
Checked By:	Checker
Plot Date:	JUNE 26 2023
Job #	2055.22

SECTION B-B