

ROOF		
15TH FLOOR-MPH	5.50	
14TH FLOOR	3.55	
13TH FLOOR	3.25	
12TH FLOOR	2.95	
11TH FLOOR	2.95	
10TH FLOOR	2.95	
9TH FLOOR	2.95	
8TH FLOOR	2.95	
7TH FLOOR	3.25	
6TH FLOOR	2.95	
5TH FLOOR	2.95	
4TH FLOOR	2.95	
3RD FLOOR	2.95	
2ND FLOOR	2.95	
GROUND FLOOR	4.92	



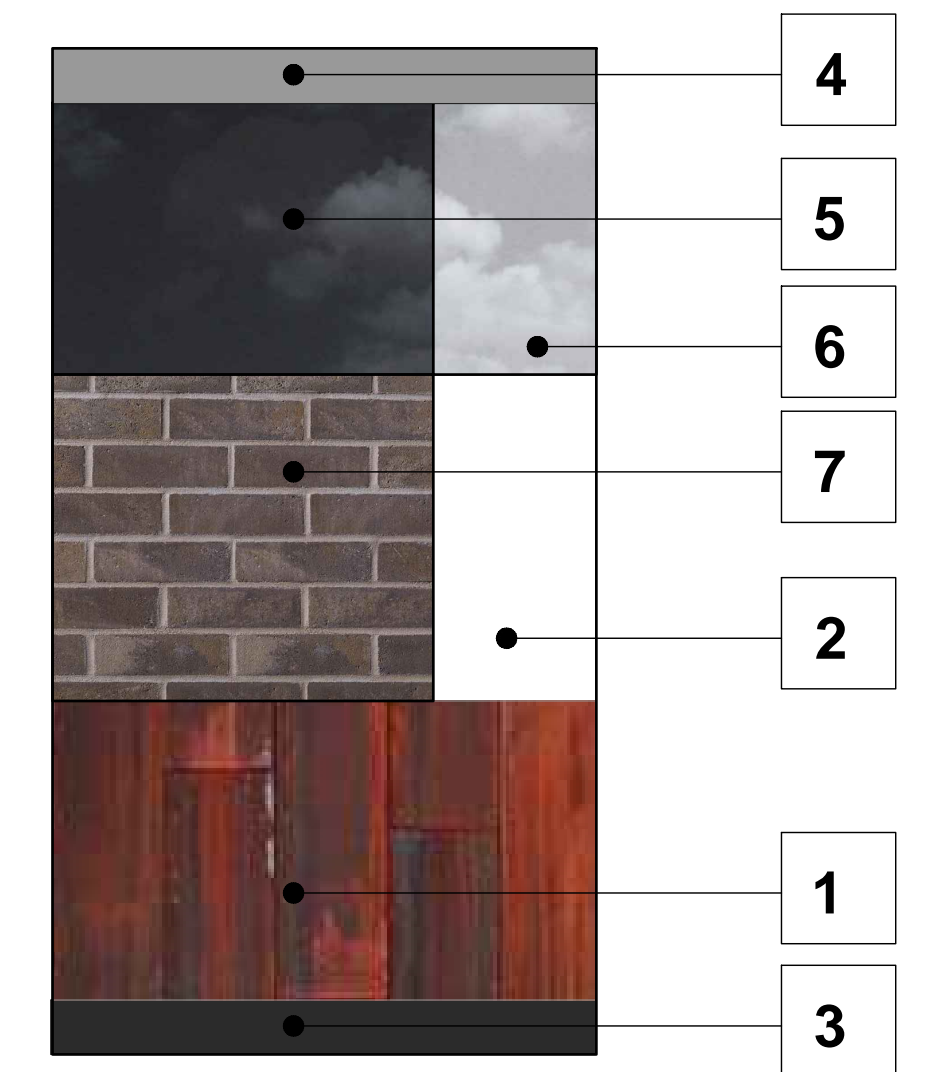
EAST ELEVATION

ROOF		
15TH FLOOR-MPH	5.50	
14TH FLOOR	3.55	
13TH FLOOR	3.25	
12TH FLOOR	2.95	
11TH FLOOR	2.95	
10TH FLOOR	2.95	
9TH FLOOR	2.95	
8TH FLOOR	2.95	
7TH FLOOR	3.25	
6TH FLOOR	2.95	
5TH FLOOR	2.95	
4TH FLOOR	2.95	
3RD FLOOR	2.95	
2ND FLOOR	2.95	
GROUND FLOOR	4.92	



NORTH ELEVATION

MATERIAL SAMPLE



ROOF		
15TH FLOOR-MPH	5.50	
14TH FLOOR	3.55	
13TH FLOOR	3.25	
12TH FLOOR	2.95	
11TH FLOOR	2.95	
10TH FLOOR	2.95	
9TH FLOOR	2.95	
8TH FLOOR	2.95	
7TH FLOOR	3.25	
6TH FLOOR	2.95	
5TH FLOOR	2.95	
4TH FLOOR	2.95	
3RD FLOOR	2.95	
2ND FLOOR	2.95	
GROUND FLOOR	4.92	



WEST ELEVATION

ROOF		
15TH FLOOR-MPH	5.50	
14TH FLOOR	3.55	
13TH FLOOR	3.25	
12TH FLOOR	2.95	
11TH FLOOR	2.95	
10TH FLOOR	2.95	
9TH FLOOR	2.95	
8TH FLOOR	2.95	
7TH FLOOR	3.25	
6TH FLOOR	2.95	
5TH FLOOR	2.95	
4TH FLOOR	2.95	
3RD FLOOR	2.95	
2ND FLOOR	2.95	
GROUND FLOOR	4.92	



SOUTH ELEVATION

LEGEND

- 1 METAL OR CERAMIC PANEL
COLOUR AS PER ELEVATIONS
- 2 METAL OR COMPOSITE PANEL
COLOUR RANGE: WHITE
- 3 ALUMINUM WINDOW SYSTEM COLOUR RANGE: DARK GRAY
- 4 ALUMINUM WINDOW SYSTEM COLOUR RANGE: LIGHT GRAY
- 5 VISION GLASS 1: DARK TINT
- 6 VISION GLASS 2: CLEAR
- 7 BRICK FINISH - COLOUR RANGE BROWN