

UNDERGROUND PARKING EXHAUST GRATE  
- REFER TO SITE PLAN

GAS REGULATOR  
- REFER TO SITE PLAN

PERMEABLE PAVERS  
- SEE DETAIL D2, L-1

EXISTING FIRE HYDRANT TO REMAIN  
- REFER TO SITE PLAN

EXTENT OF BUILDING OVERHANG ABOVE  
- REFER TO ARCHITECTURAL

CITY OF HAMILTON URBAN BRAILLE SIDEWALK TO CONTINUE THROUGH UNDERGROUND PARKING ENTRANCE AS SHOWN  
- SEE DETAILS ON L-3 TO L-5

RETAINING WALL  
- REFER TO ENGINEERING PLAN

BIKE RACKS (5 UNITS = 10 SPACES)  
- SEE DETAIL D4, L-2  
- BIKE RACKS TO BE SURFACE MOUNTED TO 150mm DEPTH CONCRETE PAD AS SHOWN

SIAMISE CONNECTION  
- REFER TO ENGINEERING PLAN

STREET TREE PLANTING TYP.  
- CITY OF HAMILTON FORESTRY DEPARTMENT TO DETERMINE SPECIES  
- TREES TO BE PLANTED BY THE CITY OF HAMILTON

TREE GRATES WITH TREE GUARDS (3 UNITS)  
- SEE DETAIL D1, L-2

PRECAST CONCRETE BENCH - WL-08 (1 UNIT)  
- TO BE PINNED TO CONCRETE PAD BELOW BENCH  
- SEE DETAIL D3, L-2

EXTENT OF STRATAVAULT SOIL CELLS  
44m<sup>2</sup> TOTAL @ 1m DEPTH, 21.3m<sup>3</sup> PER TREE  
- SEE DETAIL D2, L-2

EXISTING CITY OF HAMILTON URBAN BRAILLE SIDEWALK TO REMAIN.  
- ANY DAMAGE TO SIDEWALK DURING CONSTRUCTION TO BE REPAIRED TO ORIGINAL CONDITION  
- SEE DETAILS ON L-3 TO L-5

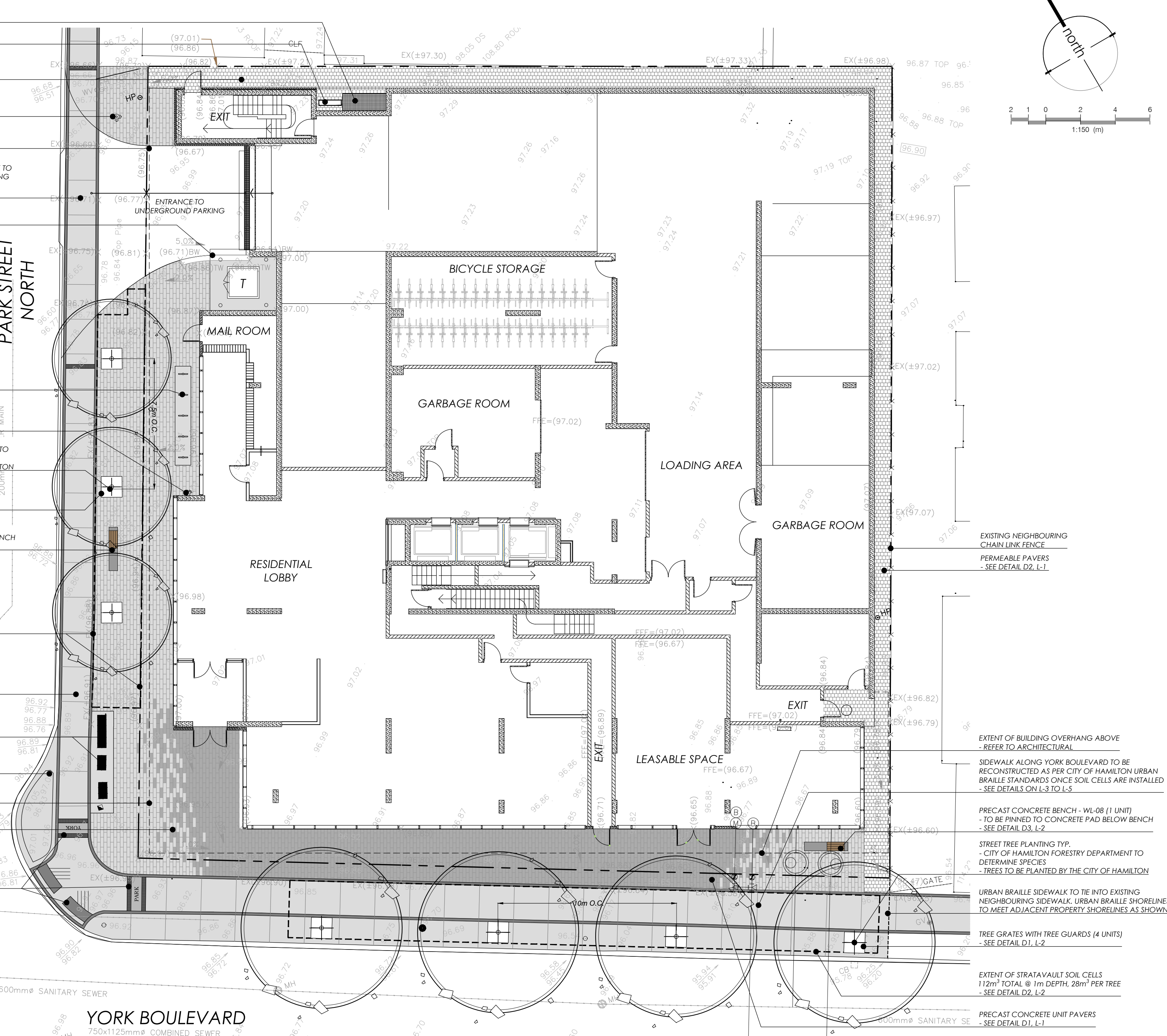
EXISTING UTILITY BOXES TO REMAIN

EXISTING PLANTER TO BE REMOVED AND REPLACED WITH 150mm DEPTH CONCRETE  
- SEE DETAIL D3, L-2

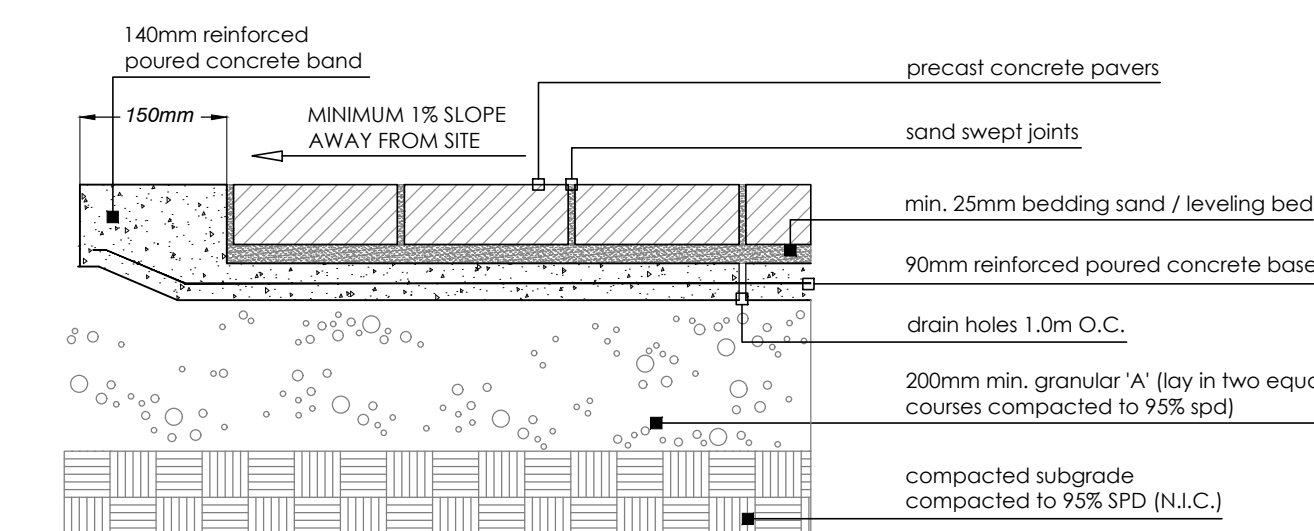
EXTENT OF BUILDING OVERHANG ABOVE  
- REFER TO ARCHITECTURAL

PRECAST CONCRETE UNIT PAVERS  
- SEE DETAIL D1, L-1

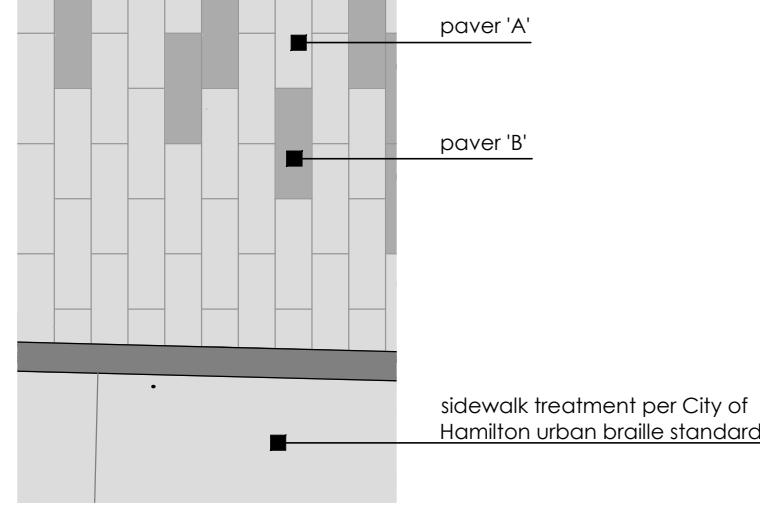
CORNER CROSSING AS PER CITY OF HAMILTON URBAN BRAILLE STANDARDS  
- SEE DETAILS ON L-3 TO L-5



SECTION - PAVERS ON CONCRETE



PAVER LEGEND



NOTES:

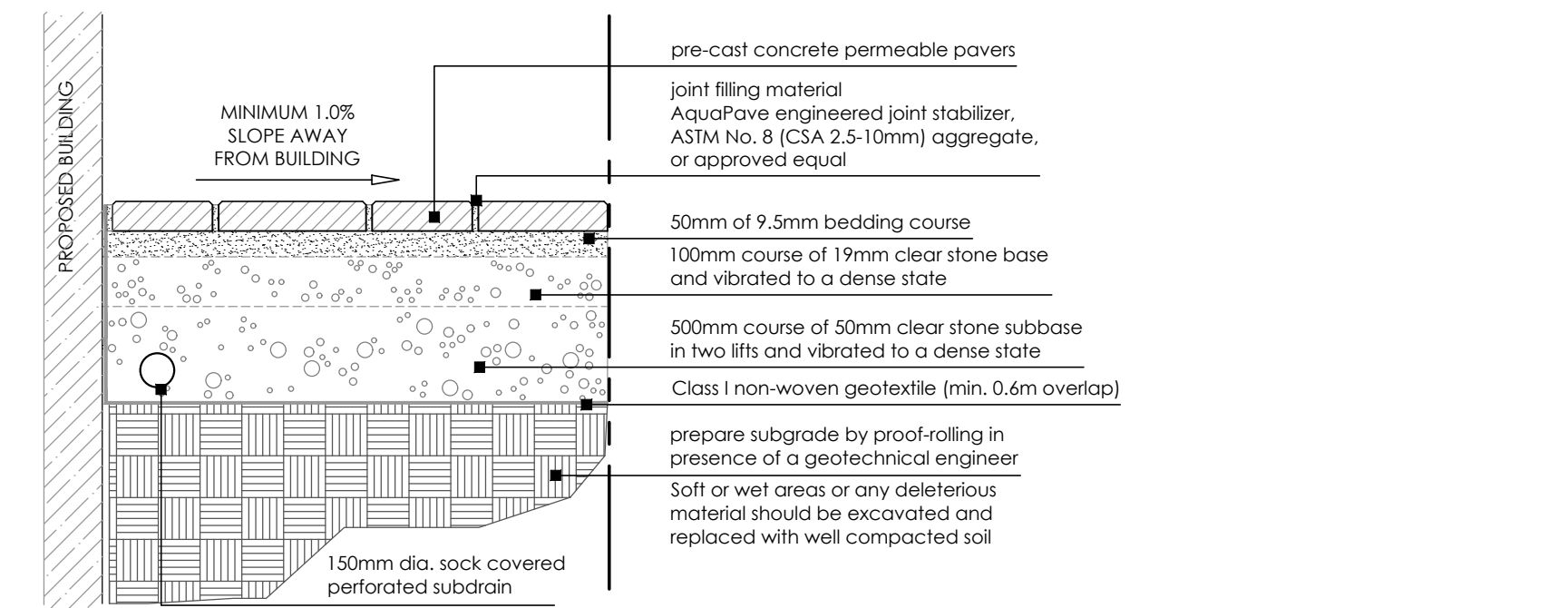
1. Paver types are as follows:

TYPE	DESCRIPTION	PATTERN	SIZE	COLOUR	LOCATION
A'	Techo-Bloc - Industria Smooth (or approved equal)	Field	600 x 200mm	Greyed Nickel	Ground Level Entrances
B'	Techo-Bloc - Industria Smooth (or approved equal)	Field	600 x 200mm	Shale Grey	Ground Level Entrances

2. Unit pavers are 100mm thick. Contractor to provide samples on site to be approved by Landscape Architect and/ or Owner.

3. Colours to be confirmed prior to construction

SECTION



NOTES:

1. Paver types are as follows:

TYPE	DESCRIPTION	PATTERN	SIZE	COLOUR	LOCATION
A'	Techo-Bloc - Hydra Commercial (or approved equal)	Field	200 x 300mm	Shale Grey	Ground Level (North & East property line walkway)

2. Unit pavers are 100mm thick. Contractor to provide samples on site to be approved by Landscape Architect and/ or Owner.

3. Colours to be confirmed prior to construction

LANDSCAPE NOTES:

- All work to be carried out in accordance with by-laws and codes having jurisdiction over site location.
- Complete all work to the satisfaction of the Landscape Architect.
- Report any changes, discrepancies or substitutions to the Landscape Architect for review. Obtain approval from the Landscape Architect before proceeding.
- It is the contractor's responsibility to determine existing service locations.
- Exact locations of plant material will be determined by placement of site services such as hydro vaults, meters, utilities roof rain water leaders, driveways, light standards, etc.
- All plant material locations to be staked or marked out and approved by Landscape Architect prior to installation.
- Supply all plant material in accordance with the Canadian Standards for Nursery Stock (8th ed.).
- Install plant material according to details shown.
- Supply and place mulch in accordance with Canadian Landscape Standard (Section 10, Mulching). Disturbed soil areas around trees and shrubs are to be covered with shredded conifer bark mulch such as 'Cedar Bark Mulch' by All Treat Forms or 'Classic Cedar Mulch' by Gro-Bark, or approved equivalent. Alternative mulches must be approved by the Landscape Architect.
- Contractor to utilize layout dimensions where provided
- Provide planting bed area as noted on the drawing or to accommodate mature size of plant material.
- All support systems must be removed by the contractor at time of final acceptance. No extras will be paid to complete this work
- Supply and place topsoil in accordance with Canadian Landscape Standard (Section 4, Grading & Drainage and Section 6, Growing Medium) to a minimum depth of 150mm unless otherwise specified.
- Supply and place sod in accordance with Canadian Landscape Standard (Section 7, Lawns & Grass and Section 8, Turfgrass Sod) unless otherwise specified.
- Supply and place seed in accordance with Canadian Landscape Standard (Section 4, Grading & Drainage and Section 6, Growing Medium) unless otherwise specified. All 5:1 or greater slopes to be seeded with facier. Contractor to provide necessary erosion control protection as required to ensure soil stabilization and proper seed germination.
- All dimensions in meters unless otherwise noted.
- If discrepancies arise between plant material count shown on drawing and plant list, the drawing shall be considered correct.
- Contractor to provide minimum one (1) year warranty (including trees on municipal property) from date accepted on all work unless otherwise specified.
- Any site plan or grading and servicing shown is for information only. Refer to approved drawing.
- Not for construction unless stamped, signed and dated by Landscape Architect.
- Drawings not to be reproduced without written consent from Landscape Architect.
- Approval of landscape plan to be obtained from municipality.
- All plant material to be planted a minimum of 1.0m from any swales or ditches.
- For grading and servicing information refer to the consulting Engineer's drawings.
- For lighting information and power distribution refer to the electrical consultant's drawings.

CITY OF HAMILTON LANDSCAPE NOTES:

- Any plant material substitutions require the approval of the City of Hamilton.
- Plant material and fencing shall be minimum to be provided by the owner. Any additions must comply to the zoning by-law.
- Any sodding, planting or work on lands abutting the property from the lot lines to sidewalk and curbing, shall be to the satisfaction of the City of Hamilton.
- All landscaping shall be installed prior to the end of the first growing season following the occupancy of the development.
- Unless otherwise specified all landscaped areas are to be sodded.
- Unless otherwise specified all undeveloped areas shall be undisturbed and kept free and clear of debris and maintained.

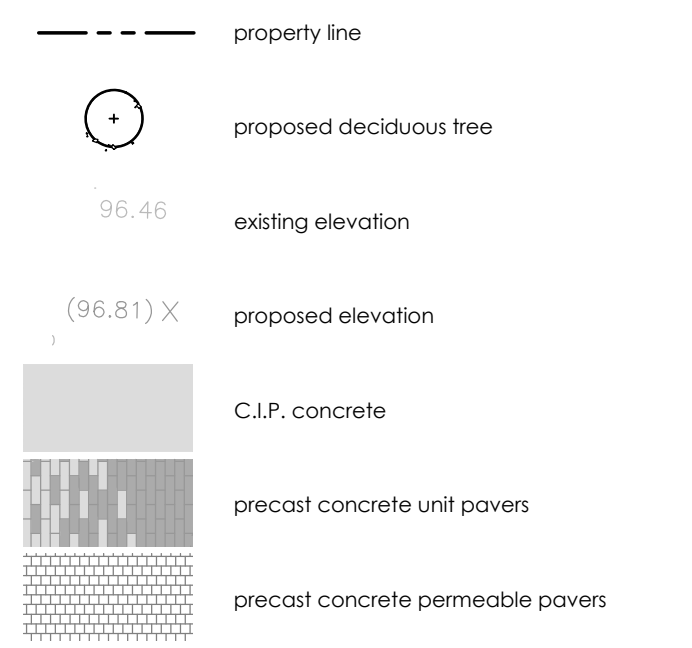
PLANTING NOTES (HAMILTON):

- Soil mixture: four (4) parts native soil, one (1) part well rotted compost. If existing soil is not suitable provide triple mix topsoil or approved equal.
- Saucer shall be soaked with water and mulched immediately following planting.
- Matted shrubs shall be planted in continuous mulched beds unless otherwise noted.
- Staking schedule:  
 < 30mm caliper size/ 2000mm ht. - one stake  
 30-50mm caliper size/ 2500mm ht. - two stakes  
 > 50mm caliper - no stakes
- All support systems must be removed once tree is established.
- All trees to be straight and planted vertically regardless of slope.
- Top of root flare shall be positioned 50mm above grade.
- As per the City of Hamilton Planting Policy ensure that the root ball of the proposed trees is large enough to accommodate at least 75 percent of the fibrous root system (e.g. for 50mm caliper trees the root ball diameter must be 70cm minimum).
- No single species shall make up more than 20% of the total street tree population, where the development includes 20 or more tree plantings.
- Shall be spaced a minimum of 8 meters and maximum of 10 meters apart where proposed along non-residential frontage, such as park blocks.
- New sidewalks, paving or asphaltting shall allow 1.5 m<sup>2</sup> of breathing space for tree roots, and shall include such construction materials such as interlocking stone, rubber mats and steel grating to allow for this breathing space.
- Individually planted trees in new sidewalk installations shall include 2 m<sup>2</sup> of soil and a grouping of 2 or more trees in a soil bed shall include 16m<sup>2</sup> of soil per tree.

KEY MAP - N.T.S.



LEGEND

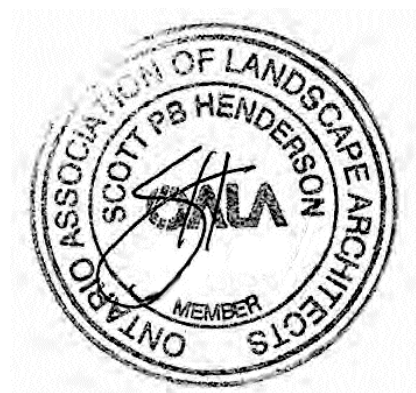


NOT FOR CONSTRUCTION  
ISSUED FOR REVIEW & COMMENTS ONLY

REVISIONS/ SUBMISSIONS

#	DATE	DESCRIPTION
1	2022-12-19	Issued for 1st SPA Submission

STAMP



CLIENT  
Belmont Equity (58 York) Hamilton Inc.

MUNICIPALITY  
City of Hamilton

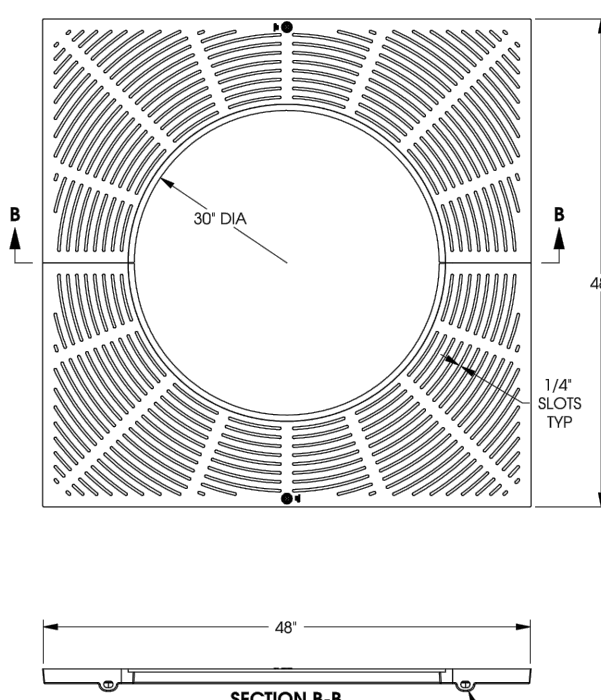
PROJECT  
58 York Boulevard

SHEET  
Landscape Plan

adesso design inc.  
landscape architecture

218 Locke Street South, 2nd Floor  
Hamilton, ON L8P 4B4  
1.905.526.8876  
www.adessodesigninc.ca

8954 PLAZA Set



**Product Number**  
89540101

**Design Features**  
Material: 304 SS  
Finish: Grey (RAL 7035)

**Design Lead**  
Ravi Thamb  
Chris Ross  
Sofia Torres  
Caitlin  
Vikramjit  
- Designer/Manufacturer

**Certification**  
ASTM A307  
-  
Country of Origin: USA

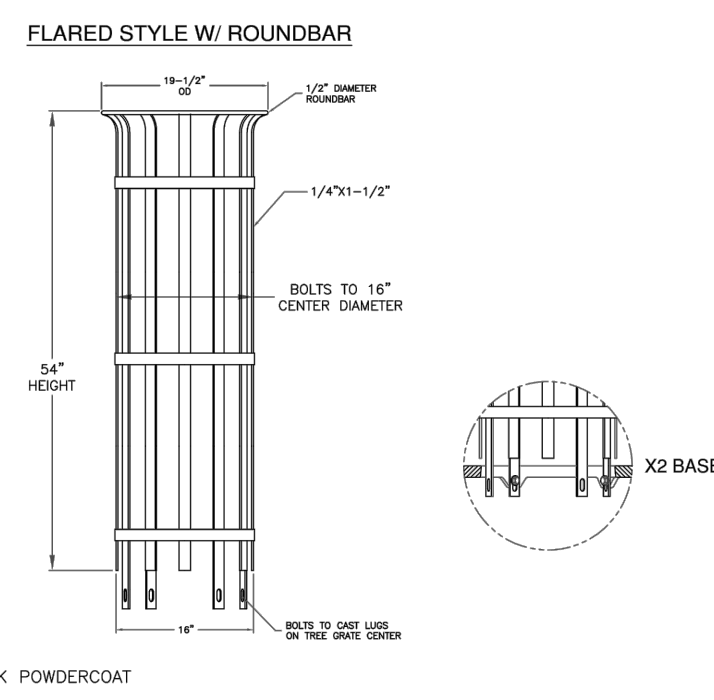
**Major Components**  
89540101

**Drawing Revision**  
11/02/2019 Designer: DEW  
09/16/2021 Revised By: JAH

**Disclaimer**  
EJ is not responsible for any errors or omissions in this drawing. The user is responsible for verifying all dimensions and specifications. This drawing is intended for informational purposes only. It is not to be used for construction without the approval of EJ.

**Contact**  
800.826.4853  
ej@ej.com

8954 Series, Flare W/ Round Bar



**Product Number**  
89540101

**Design Features**  
Material: 304 SS  
Finish: Grey (RAL 7035)

**Design Lead**  
Ravi Thamb  
Chris Ross  
Sofia Torres  
Caitlin  
Vikramjit  
- Designer/Manufacturer

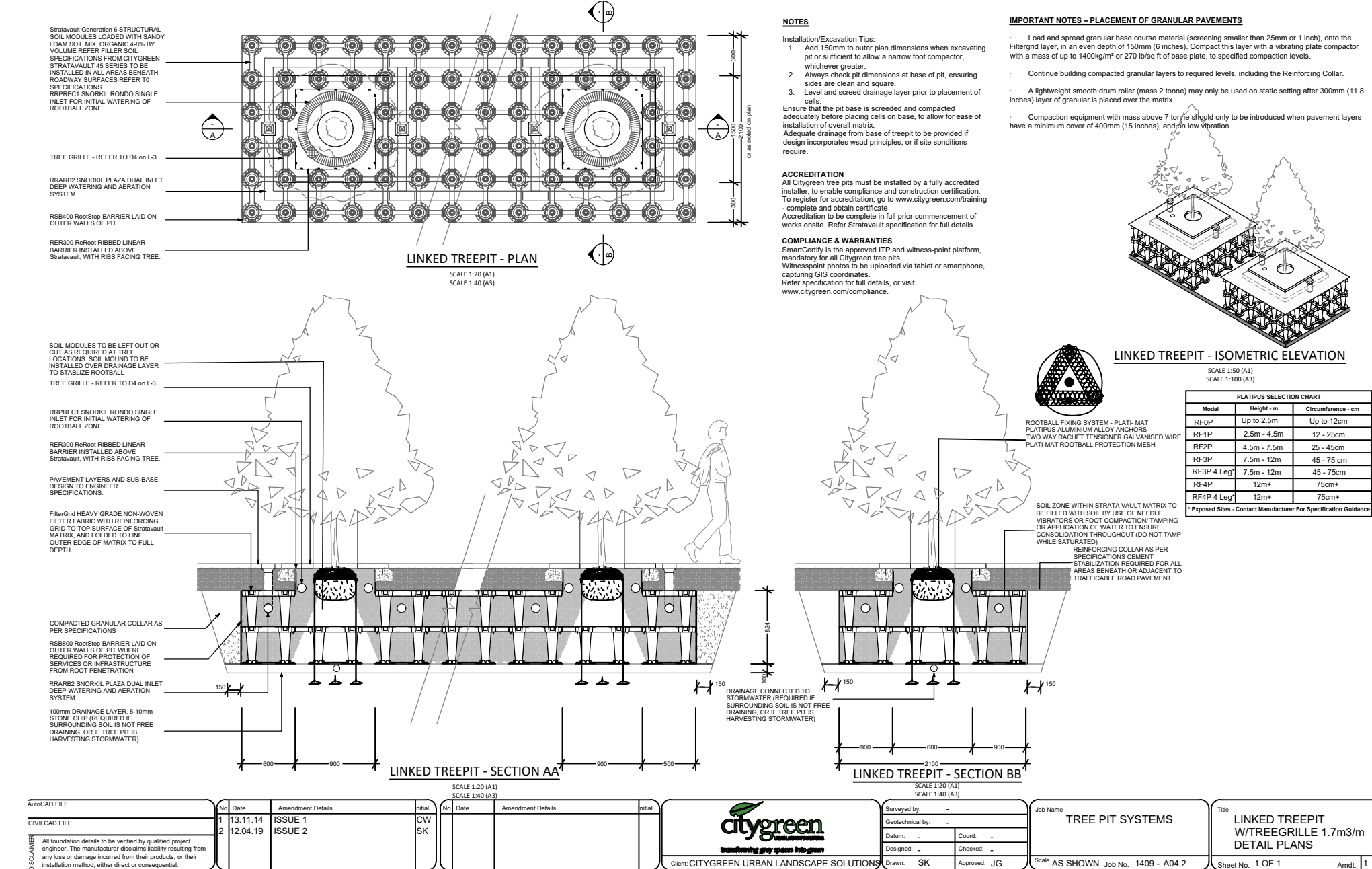
**Certification**  
ASTM A307  
-  
Country of Origin: USA

**Major Components**  
89540101

**Drawing Revision**  
11/02/2019 Designer: DEW  
09/16/2021 Revised By: JAH

**Disclaimer**  
EJ is not responsible for any errors or omissions in this drawing. The user is responsible for verifying all dimensions and specifications. This drawing is intended for informational purposes only. It is not to be used for construction without the approval of EJ.

**Contact**  
800.826.4853  
ej@ej.com



ROOTBALL FIXING SYSTEM NOTES:

- All soil cell/municipal trees are to be installed with Platipus aluminum anchors, two-way ratchet tensioned galvanized wire Platipus rootball protection mesh.
  - Materials to be provided to the City of Hamilton per install.
  - Install as per manufacturers specifications.
- Platipus - Earth Anchoring Systems (or approved equal)  
T: +44 (0) 1737 762300  
E: info@platipus.com

NOTES:

- Installation to be completed in accordance with manufacturers specifications.
- Area drains to connect to perforated pipe running the complete distance of the soil trench. Perforated pipe to be located at the top of the soil trench to allow for proper infiltration.

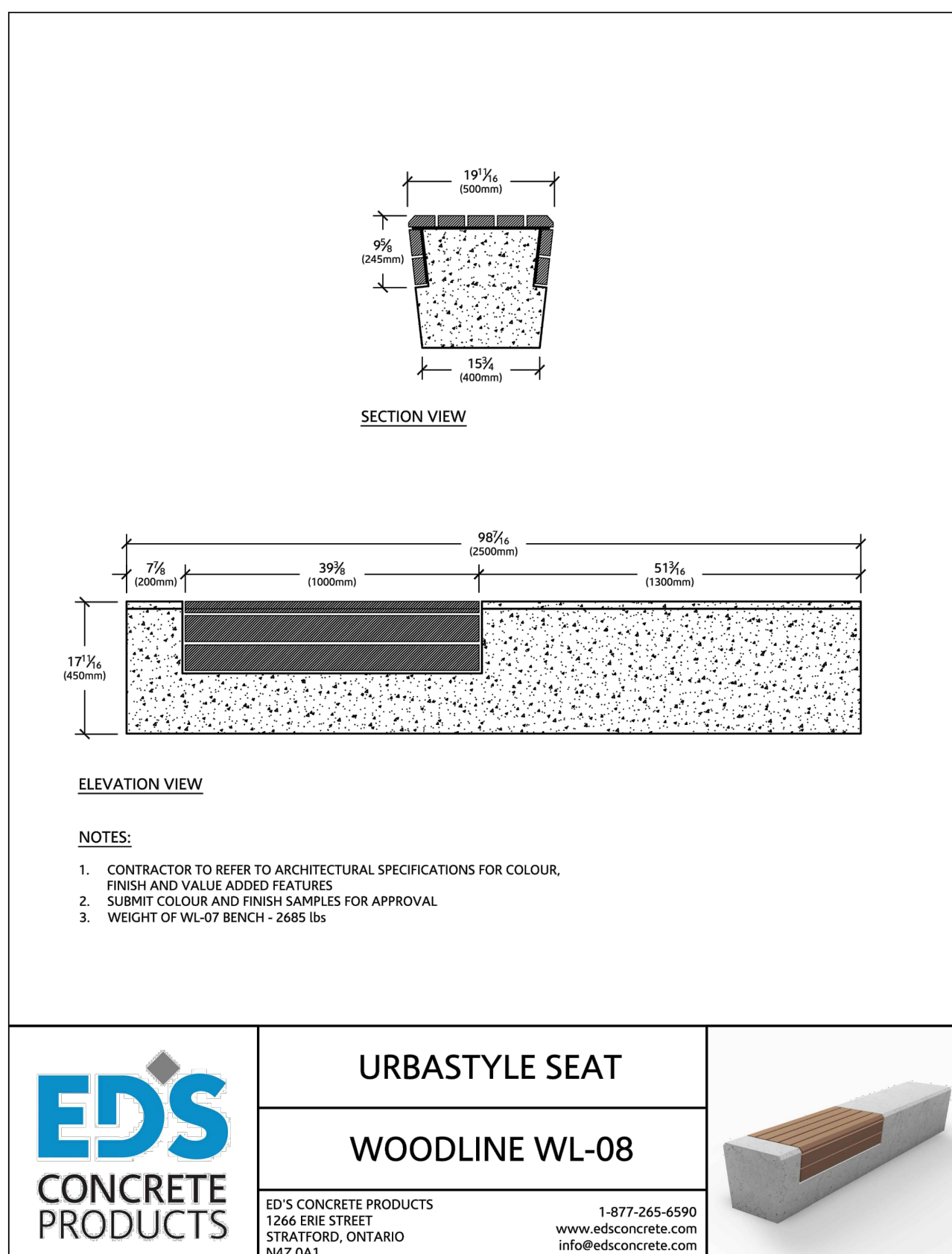
Tree Grate & Tree Guard by EJ (or approved equal)

1  
L-2

Stratavault Soil Cell by CityGreen or approved equal

Scale: NTS

2  
L-2



Precast Concrete Benches by Ed's Concrete (or approved equal)

3  
L-2



EP 5950 Bike rack

**SPECIFICATIONS**  
Frame: Flats and plates made of welded steel  
Finish: Hot-dipped galvanized and polyester powder coated  
Slot: 51mm X 76mm (2" X 3")  
Fasteners: Stainless steel

**AVAILABLE**  
5950 2 bikes per rack

**COVERINGS**  
JAT Jatoba  
IPE Ipe  
HWA Select hardwood

Prof.: 185mm (7 1/4") Long.: 214mm (8 1/2") Haut.: 762mm (30") Poids : 14 kg (30 lb)

Bicycle logo included  
This bike rack must be anchored.  
Our warranty applies when our product is properly installed and anchored.

**CONCRETE SLAB AND ANCHORS**  
7005 1 slab 610mm X 610mm X 152mm (24" X 24" X 6")  
QS 4 stainless steel kwik bolts  
QAV 4 drop-in anchors with stainless steel theft-proof bolts

Confidential information contained herein is the property of Equiparc. Intended use is limited to professionals specifying Equiparc's products and their client details. All information is not to be copied or disclosed to others without the written consent of Equiparc. All rights reserved - Equiparc, Manufacturer of Equiparc de Paris Inc.

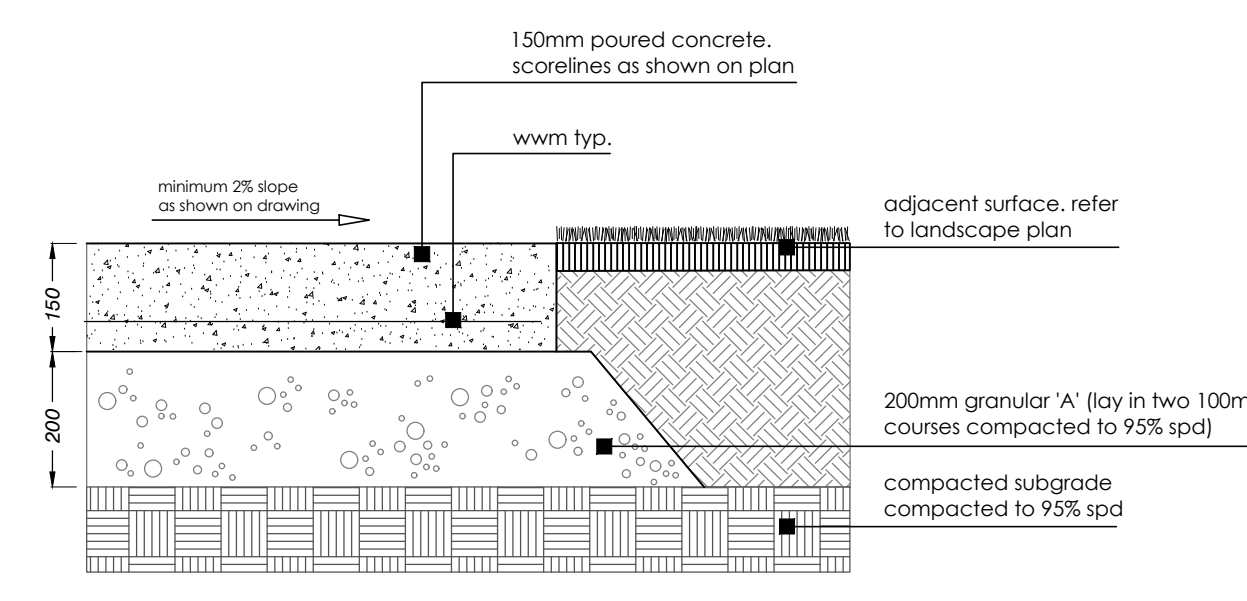
**DESIGN DURABILITY EXPERTISE** 1001 James Brindley Street, Saint-Jerome/Richelieu, Québec J2R 0C1 Canada  
Tel.: 450-340-1832 / 1 800 363-9284  
info@equiparc.com | equiparc.com

Bike Rack by Equiparc (or approved equal)

4  
L-2

Cast in Place Concrete

Scale: NTS



CONCRETE NOTES:

- Do concrete materials and methods of concrete construction in accordance with structural engineering drawings.
- Contractor to verify accuracy of concrete details and reinforcement prior to installation.
- For construction materials refer to structural engineering drawings and specifications.
- Concrete mix to provide compressive strength of 28MPa at 28 days, entrained air of 6% to 1% and slump at point of discharge of 60mm, or as per structural engineering drawings and specifications.
- Pour concrete in favorable weather conditions, inform the landscape architect of any adverse weather impacts prior to pouring.
- Pour concrete in uniform layers of continuous lengths between expansion joints. An expansion joint is required where placing has been suspended for 30 minutes.
- Provide control joints/expansion joints as shown on drawings or as per structural engineering drawings. Landscape architect is to be notified 24 hours prior to cutting score lines for review and approval of layout onsite.
- Repair defective areas while concrete is still plastic, or remove defective work and replace with new concrete.
- Concrete areas will not be accepted if:
  - fails to meet requirements of this specification;
  - contains excessive honeycombing or embedded debris;
  - 28 days average strength in any defined area is less than 95% of specified minimum strength;
  - surface irregularities;
  - damaged or chipped;
  - poor workmanship.
- It is the contractor's responsibility to maintain and protect concrete areas until time of final acceptance.

5  
L-2

NOT FOR CONSTRUCTION  
ISSUED FOR REVIEW & COMMENTS ONLY

#	DATE	DESCRIPTION
1	2022-12-19	Issued for 1st SPA Submission



CLIENT  
Belmont Equity (58 York) Hamilton Inc.

MUNICIPALITY  
City of Hamilton

PROJECT  
58 York Boulevard

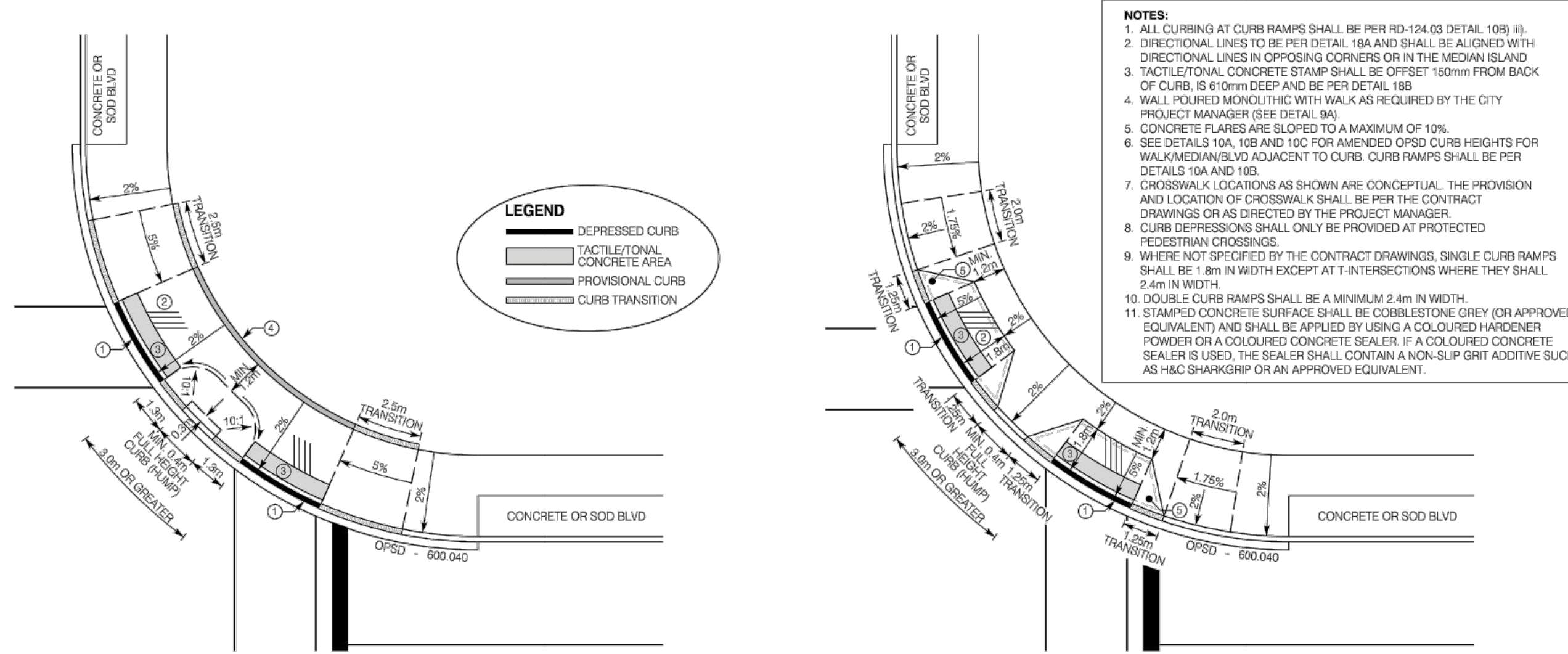
SHEET  
Details

L-2

adesso design inc.  
landscape architecture

218 Locke Street South, 2nd Floor  
Hamilton, ON L8P 4B4  
t. 905.526.8876  
www.adessodesigninc.ca

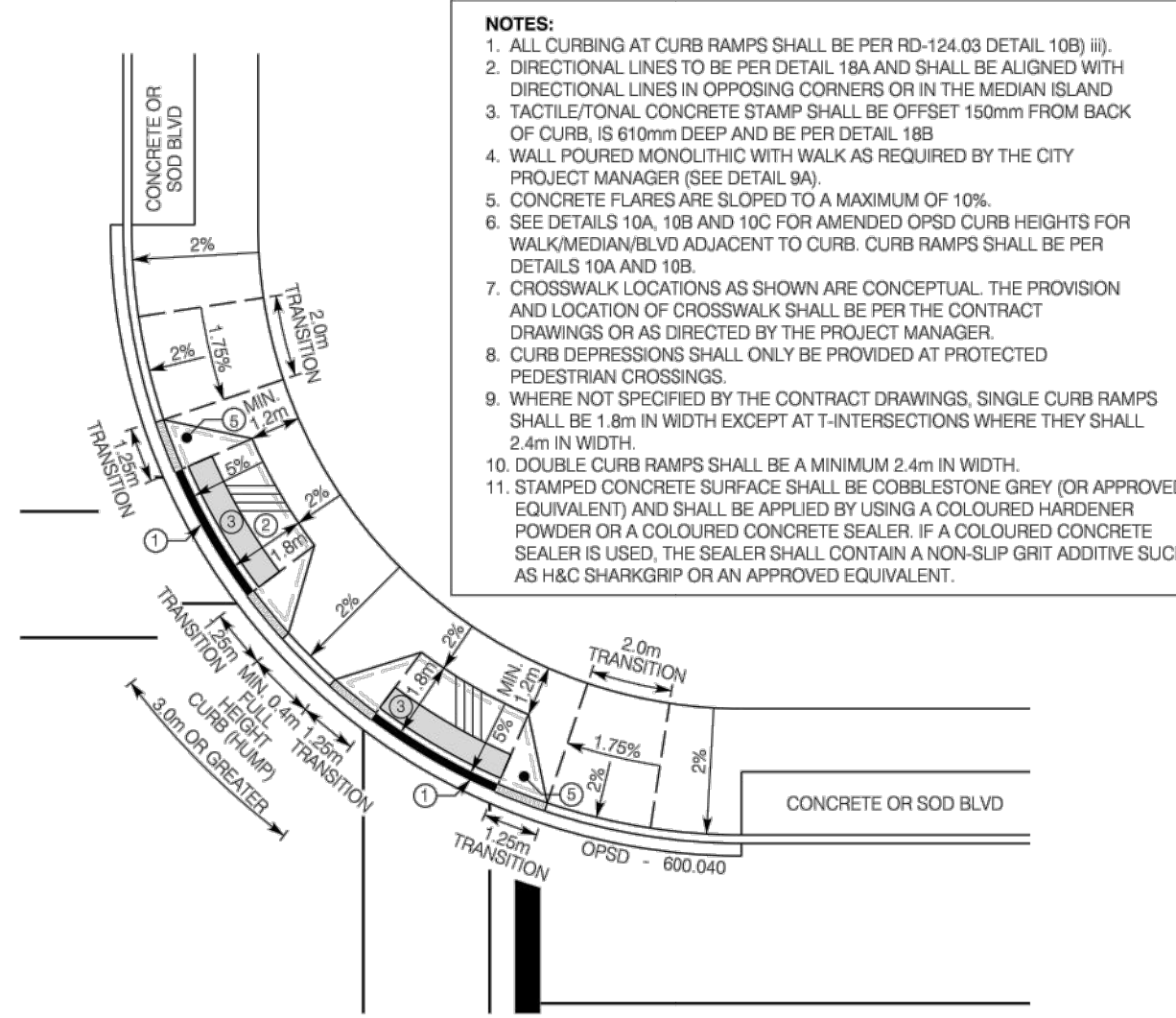




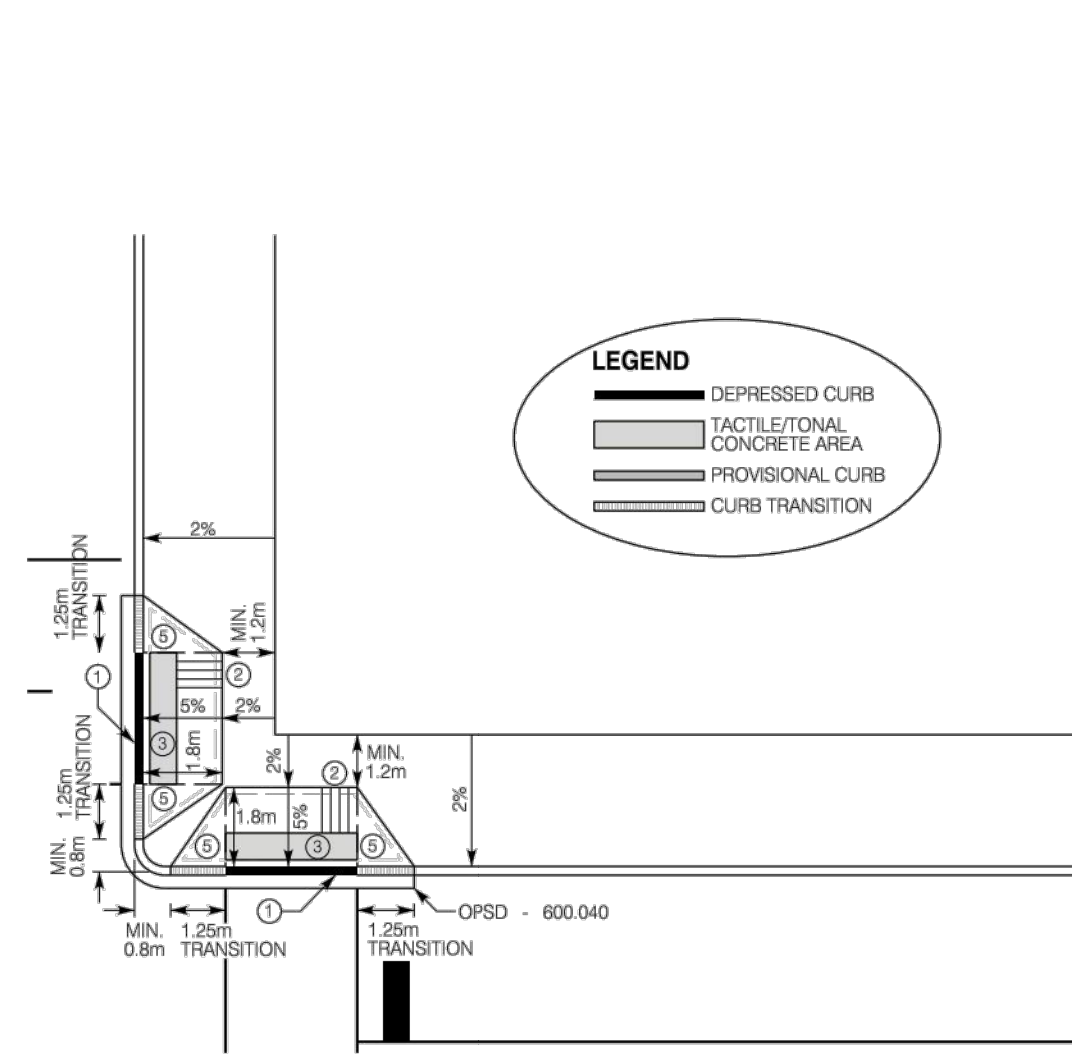
P R E F E R R E D T R E A T M E N T

5A WALK ADJACENT TO CURB (VARIABLE WIDTH)

5 SEPARATED CROSSWALKS  
DISTANCE GREATER OR EQUAL TO 3.0m



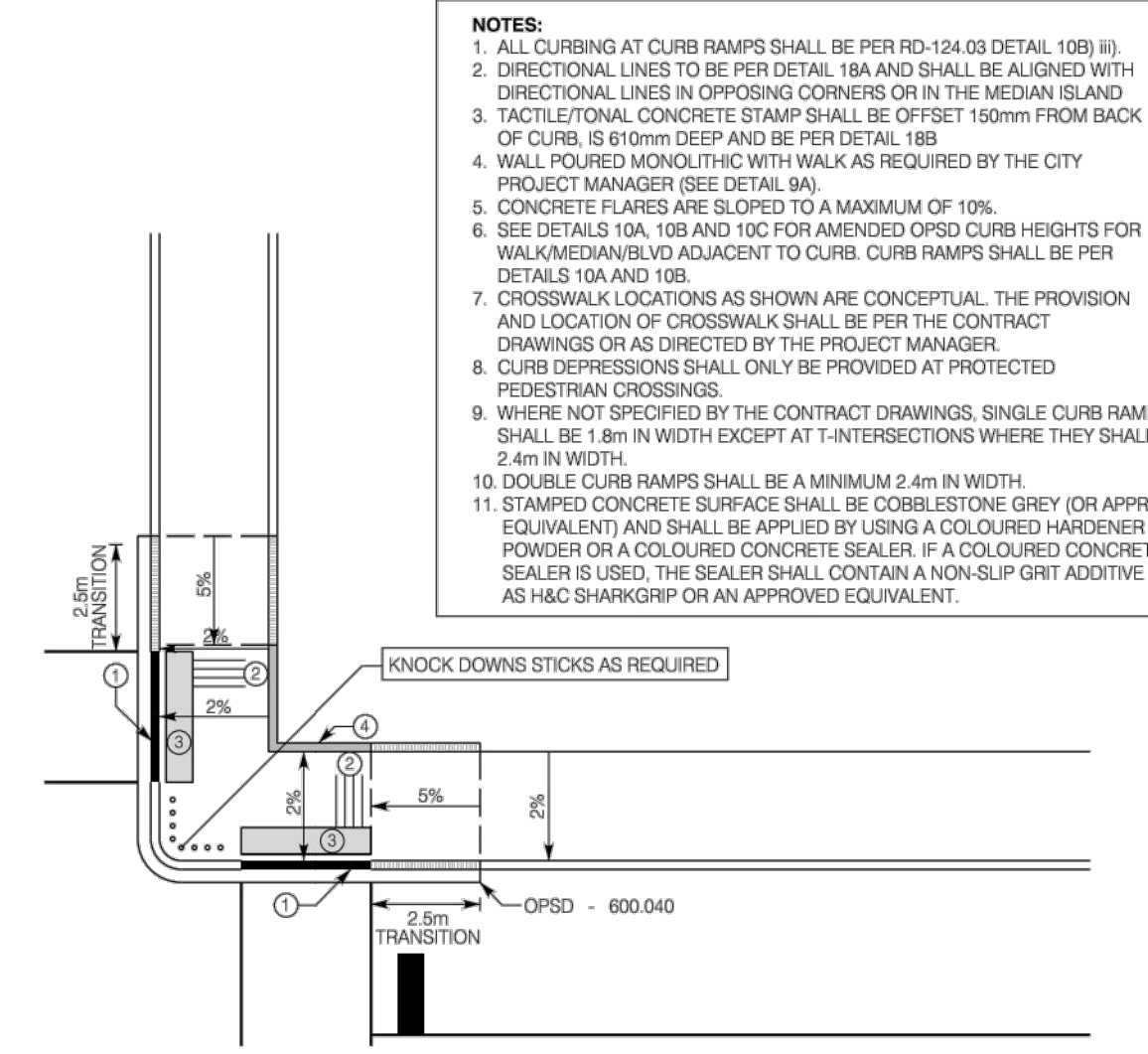
5B WALK ADJACENT TO CURB (3.0m WIDTH OR GREATER)  
BACK OF WALK ELEVATION MAINTAINED  
SEPARATE CURB RAMP POUR



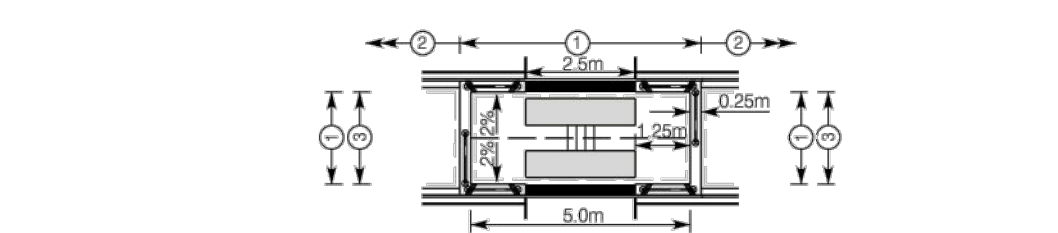
P R E F E R R E D T R E A T M E N T

6A WALK ADJACENT TO CURB (3.0m WIDTH OR GREATER)

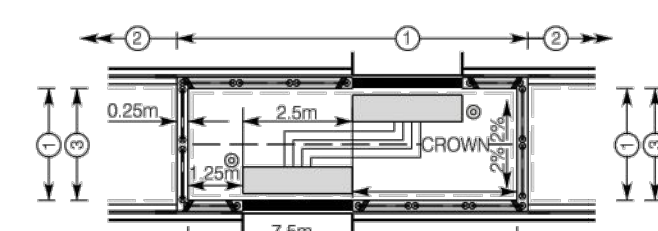
6 1m RADIUS AT BANNED TURNS



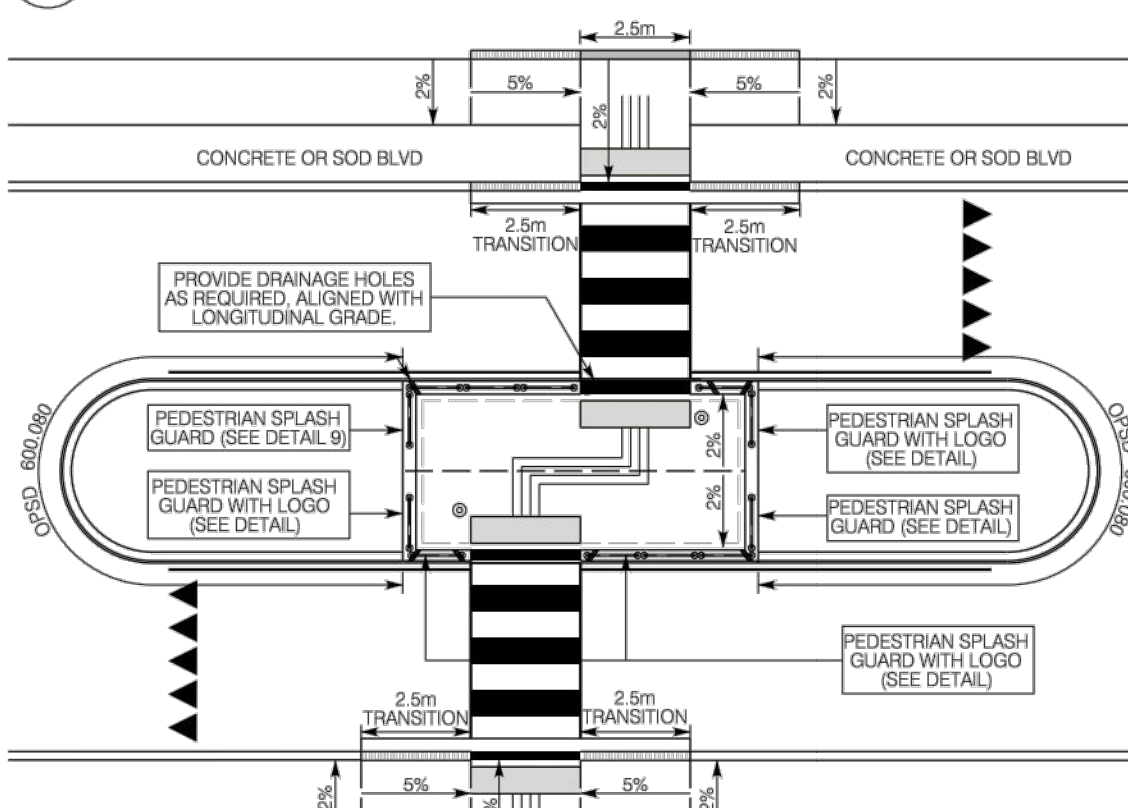
6B WALK ADJACENT TO CURB (VARIABLE WIDTH)



7A PEDESTRIAN CORRAL - MEDIAN LANE WIDTHS - 3.0m TO 3.4m



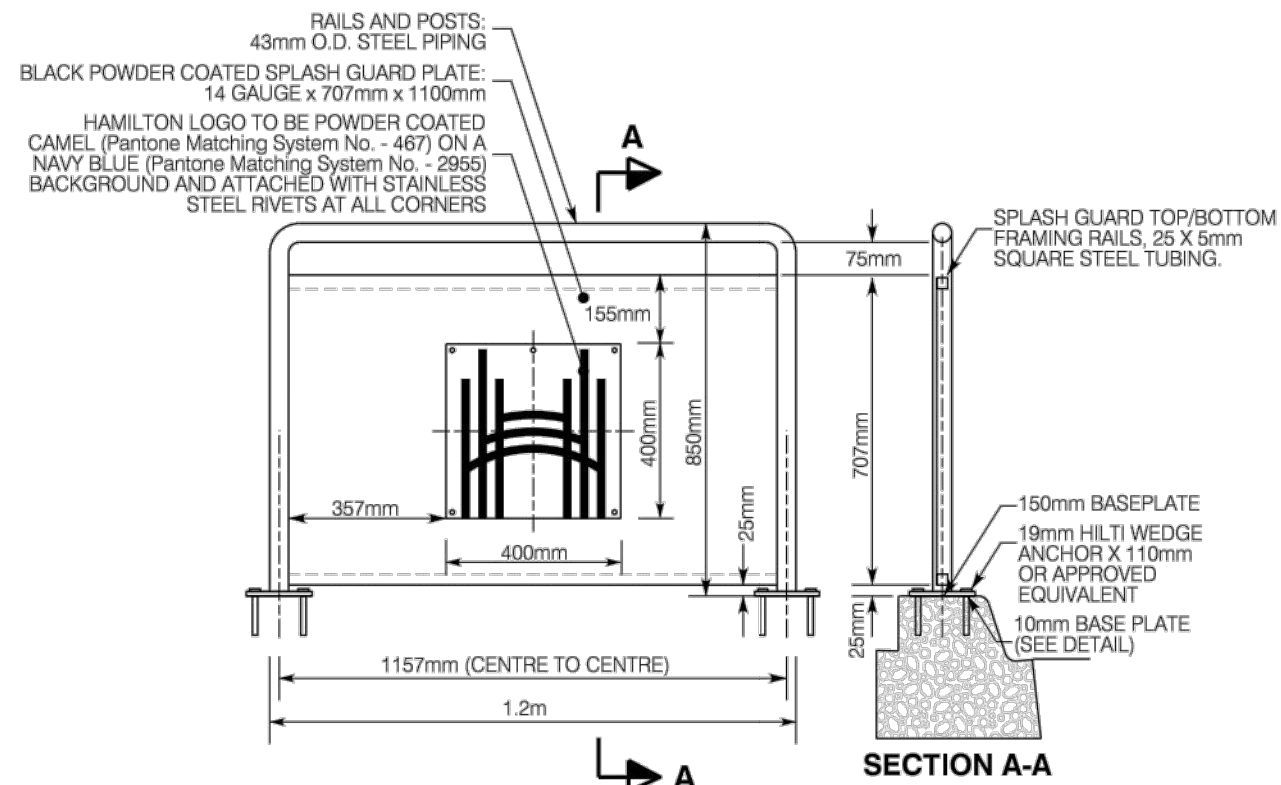
7B PEDESTRIAN CORRAL - MEDIAN LANE WIDTHS - 3.45m OR GREATER



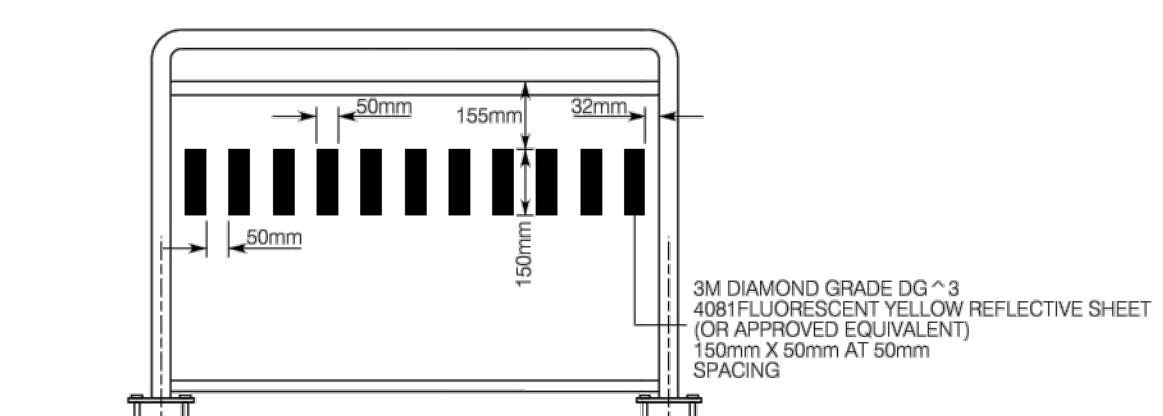
NOTES:  
1. SEE DETAIL 10C - AMENDED OPSD CURB HEIGHTS WALK/MEDIAN/BLVD ADJACENT TO CURB  
2. MEDIAN RAMPS FULL HEIGHT AND DEPRESSED (ADDITIONAL DEPTH AND WIDTH) - OPSD - 600.080 (MODIFIED)  
3. CURB SHALL BE OPSD - 600.080 (UNMODIFIED)  
4. SEE DETAIL 10C - AMENDED OPSD CURB HEIGHTS WALK/MEDIAN/BLVD ADJACENT TO CURB\*\*\* WITHOUT GUTTER

7C GENERAL

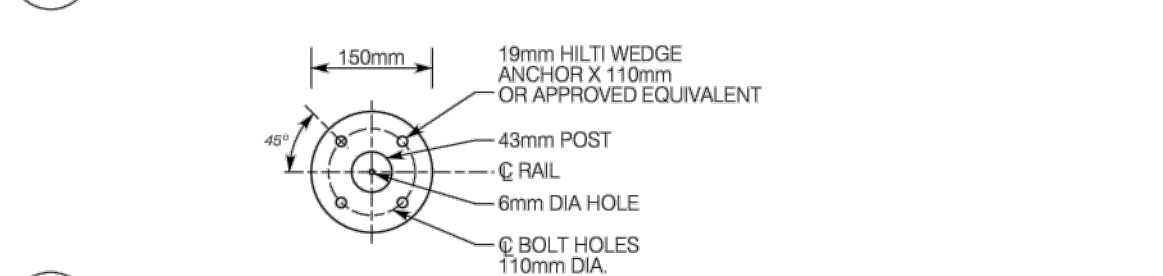
7 MEDIAN ISLANDS - PROTECTED CROSSING



8A PLAN AND SECTION (OUTER FACE)

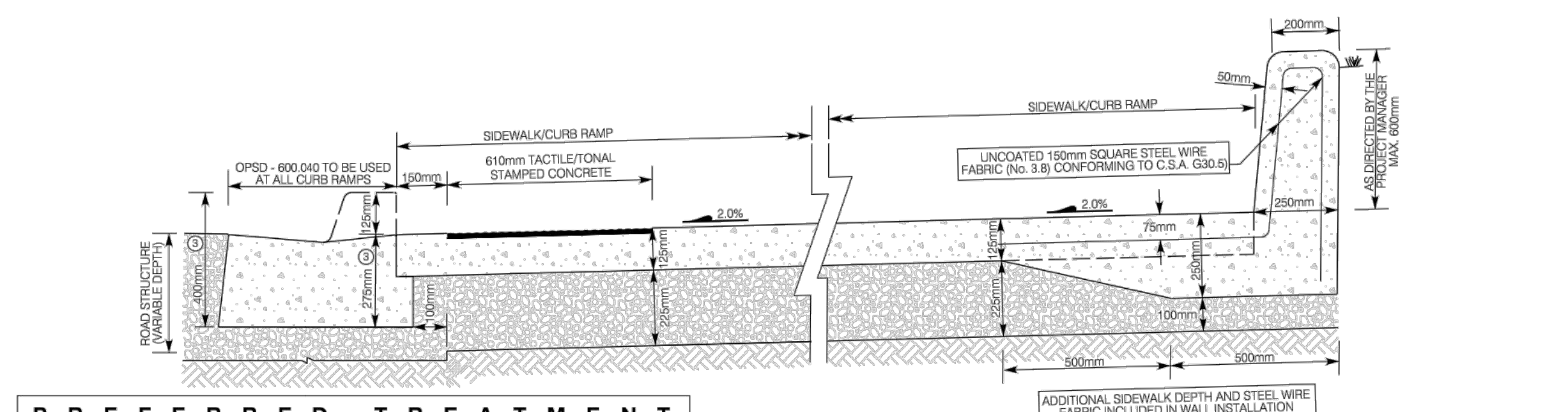


8B PLAN AND SECTION (INNER FACE)



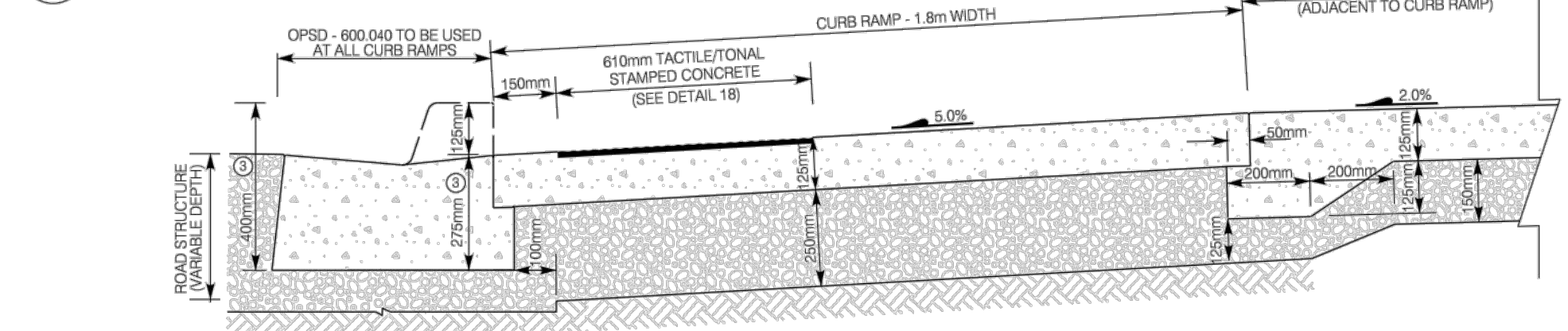
8C BASE PLATE DETAIL

8 SPLASH GUARD

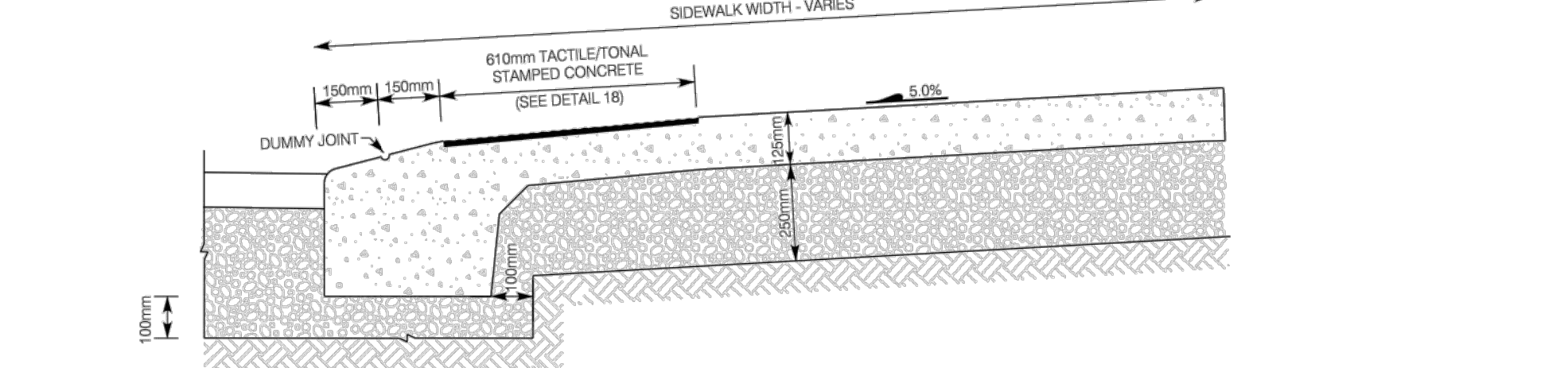


P R E F E R R E D T R E A T M E N T

9A COMBINED SIDEWALK AND CURB RAMP



9B INDEPENDENT SIDEWALK AND CURB RAMP



9C COMBINED SIDEWALK AND CURB

9 CURB RAMPS

City of Hamilton Public Works Department	
CITY OF HAMILTON - INTEGRATED ACCESSIBILITY - SIDEWALK/URBAN BRaille GUIDELINES	
DRAWING SHEET: ARE: IN: VILLAGE/STREET: DATE: JULY 2017	REV: NO: 1 FORMERLY: HAMILTON STD. NO.: RD-124.02

NOT FOR CONSTRUCTION  
ISSUED FOR REVIEW & COMMENTS ONLY

#	DATE	DESCRIPTION
1	2022-12-19	Issued for 1st SPA Submission



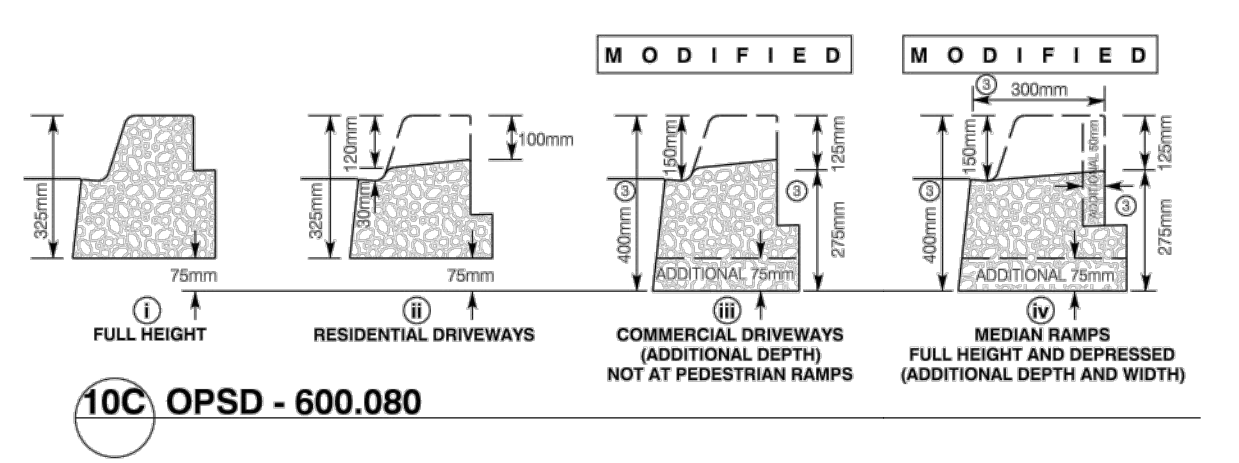
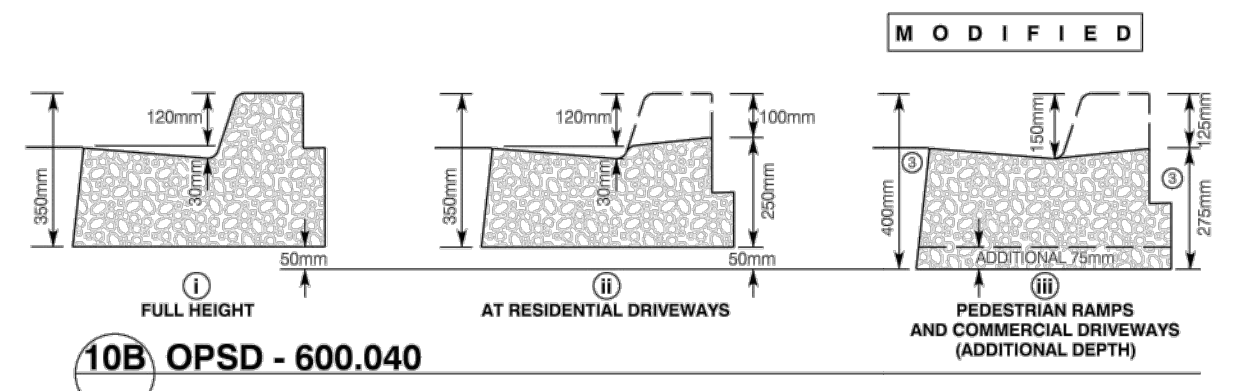
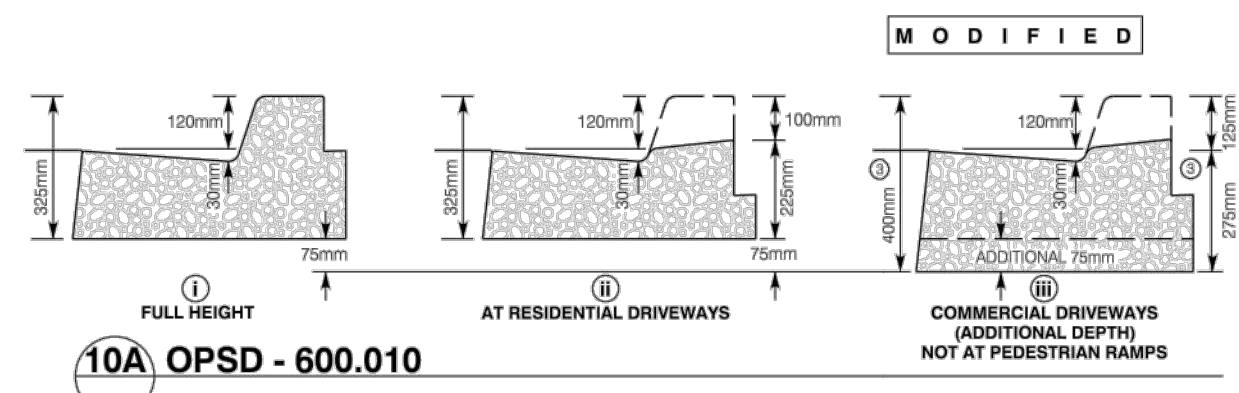
CLIENT  
Belmont Equity (58 York) Hamilton Inc.  
MUNICIPALITY  
City of Hamilton

PROJECT  
58 York Boulevard

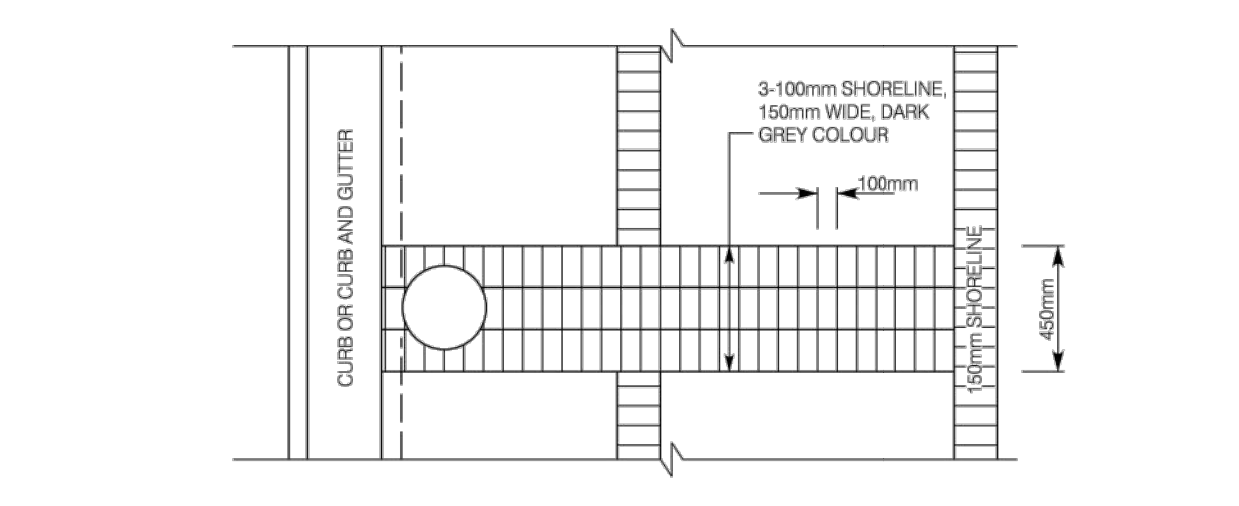
SHEET  
Hamilton STD#124.02  
Urban Braille - TYP Details L-4

adesso design inc.  
landscape architecture

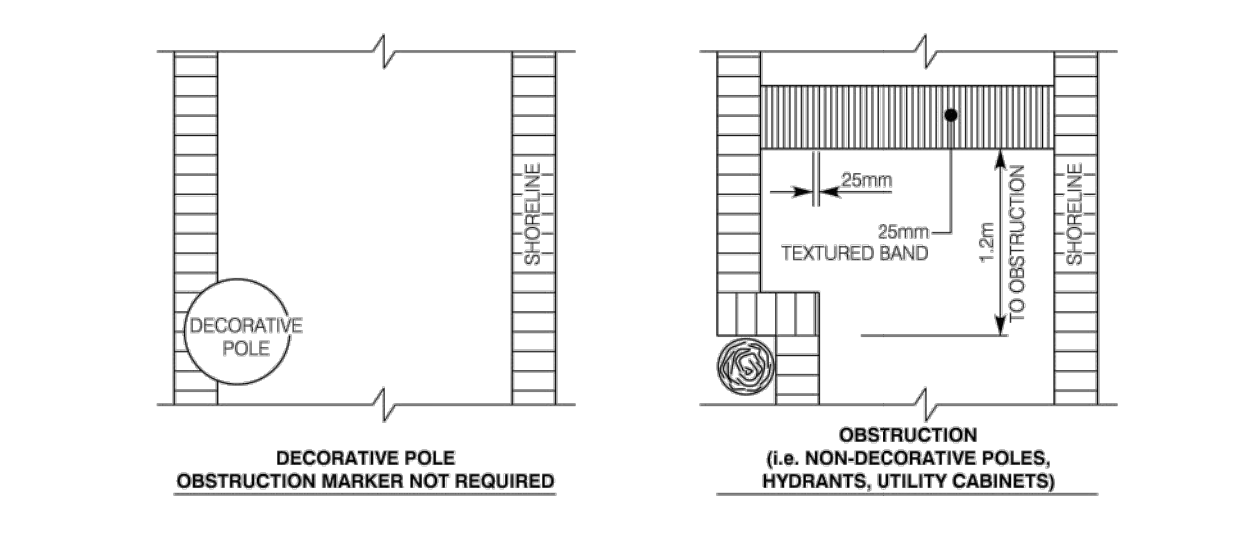
218 Locke Street South, 2nd Floor  
Hamilton, ON L8P 4B4  
t. 905.526.8876  
www.adessodesigninc.ca



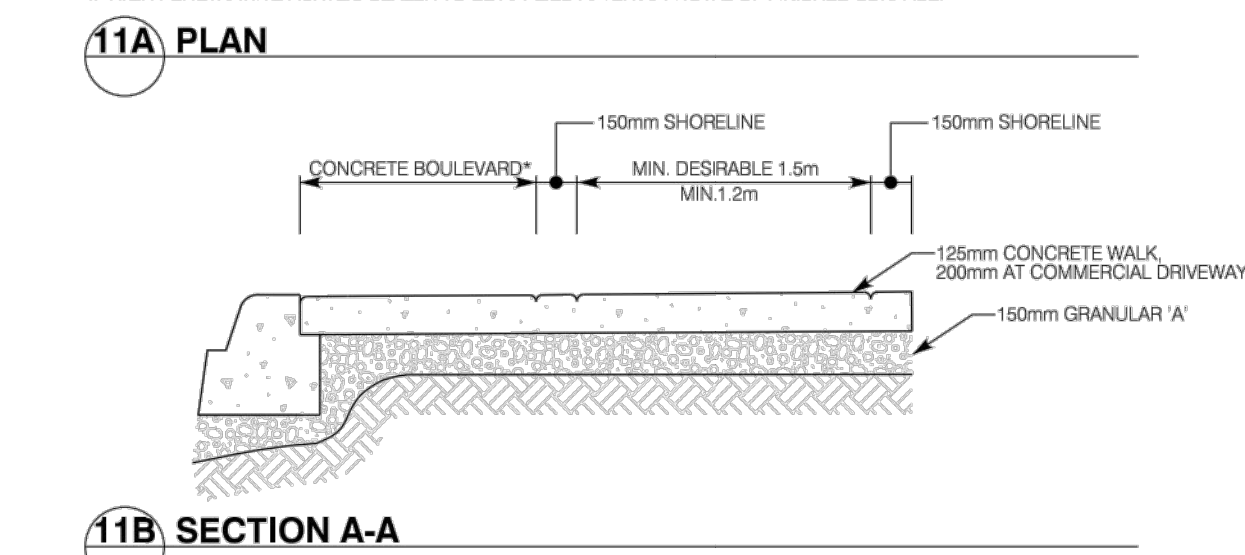
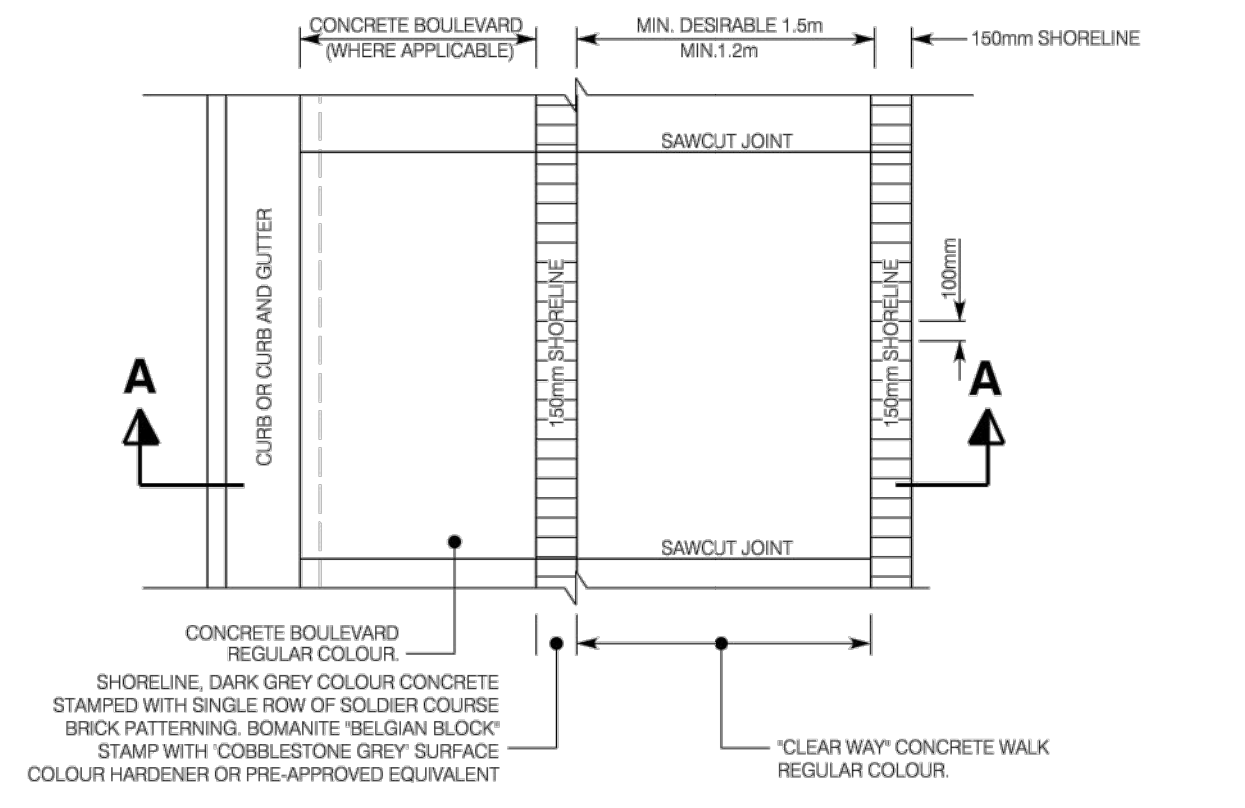
10 AMENDED OPSD CURB HEIGHTS WALK/MEDIAN/BLVD ADJACENT TO CURB



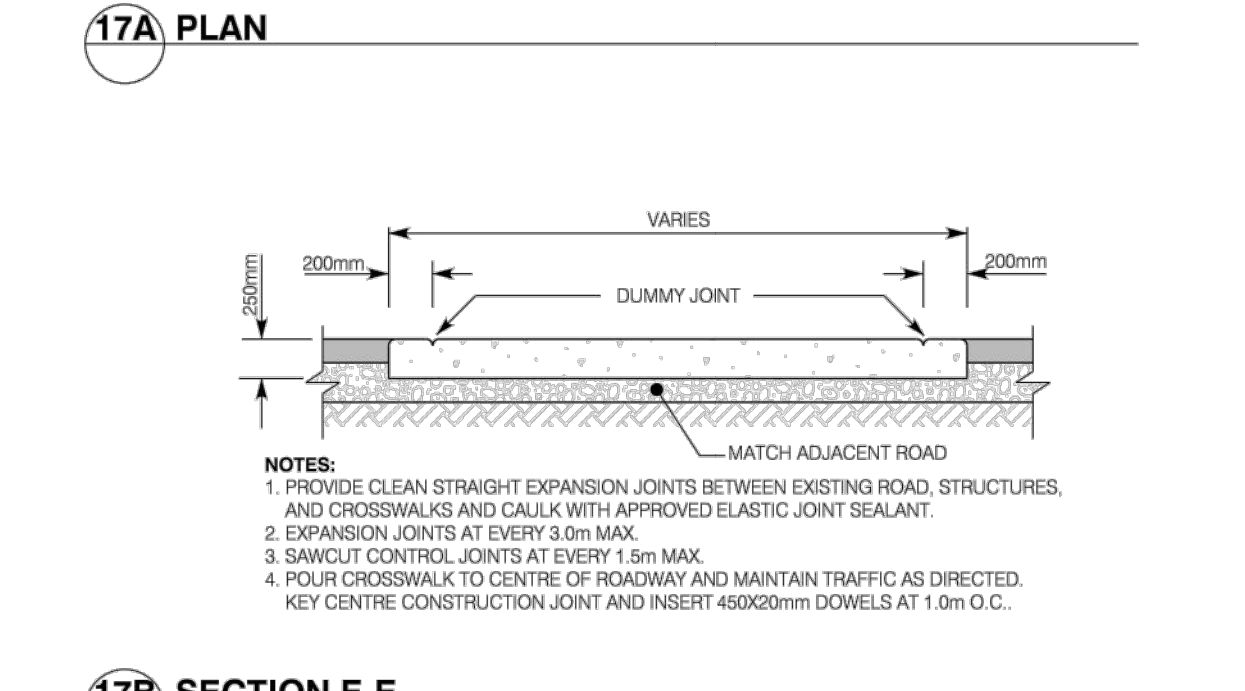
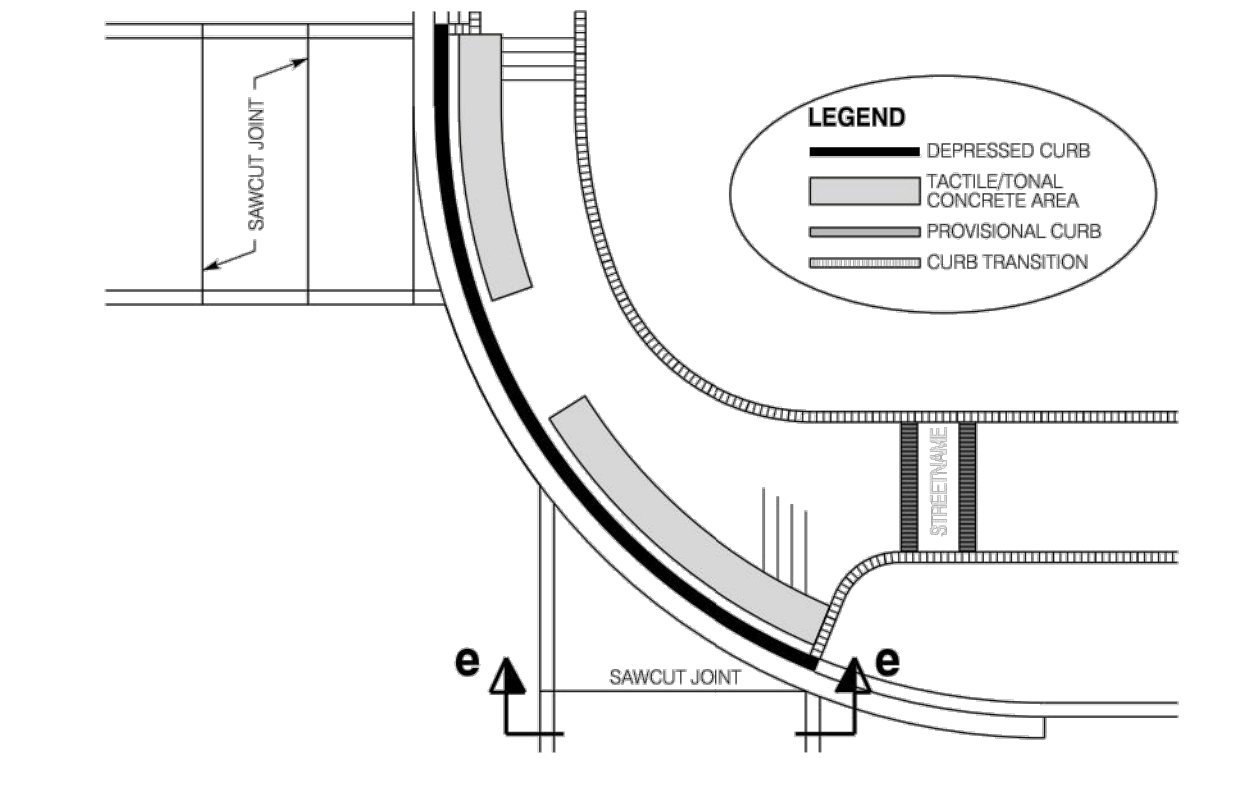
15 SHORELINES - TRANSIT STOP (450mm WIDE)



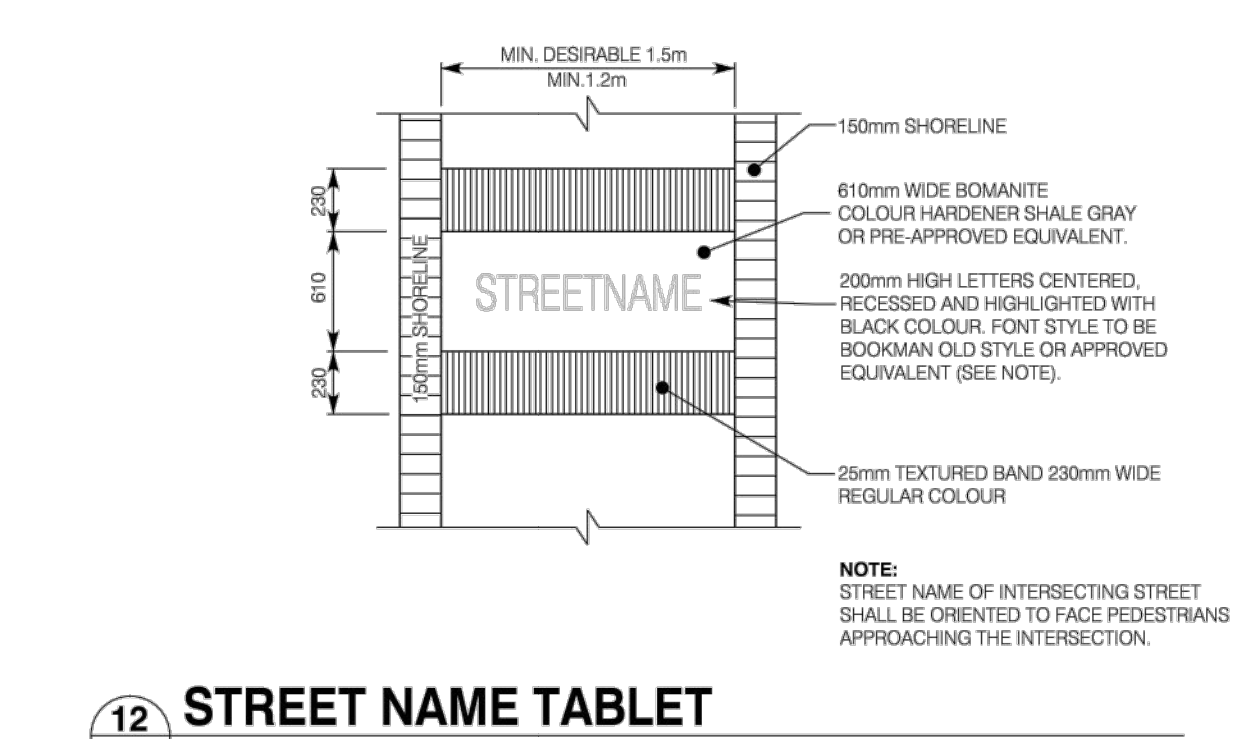
16 25mm TEXTURED BAND - OBSTRUCTIONS



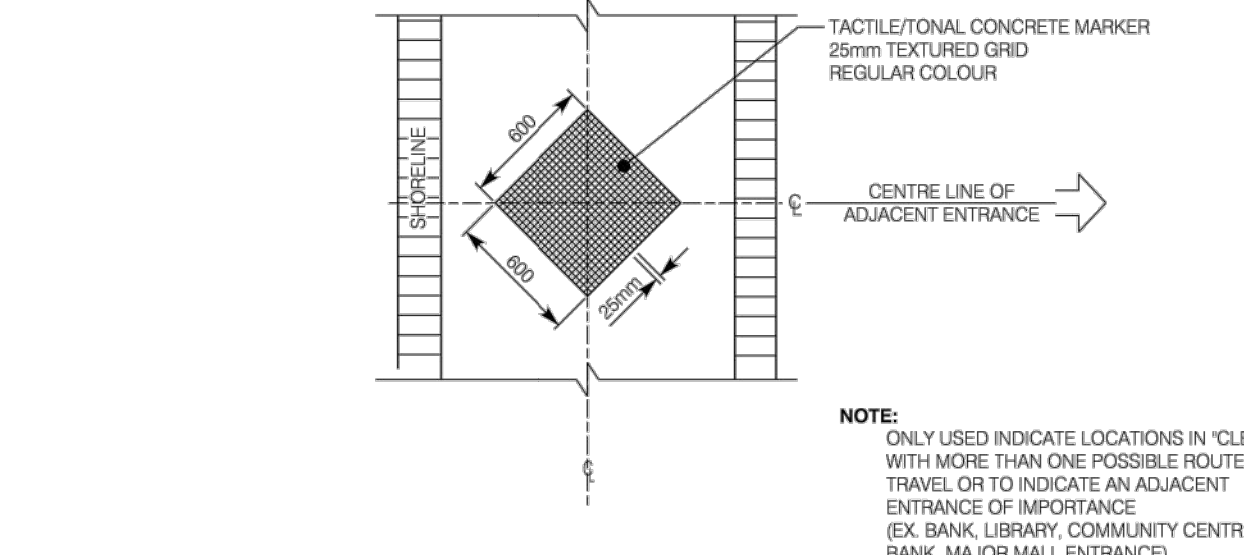
11 URBAN BRAILLE SIDEWALK/BOULEVARD SECTIONS AND DETAILS



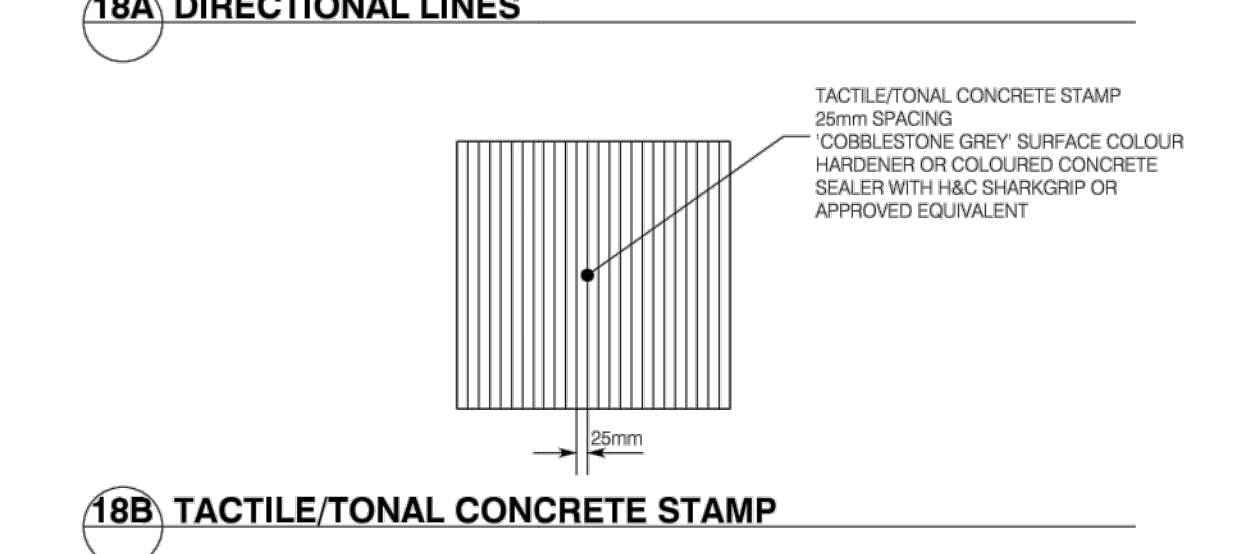
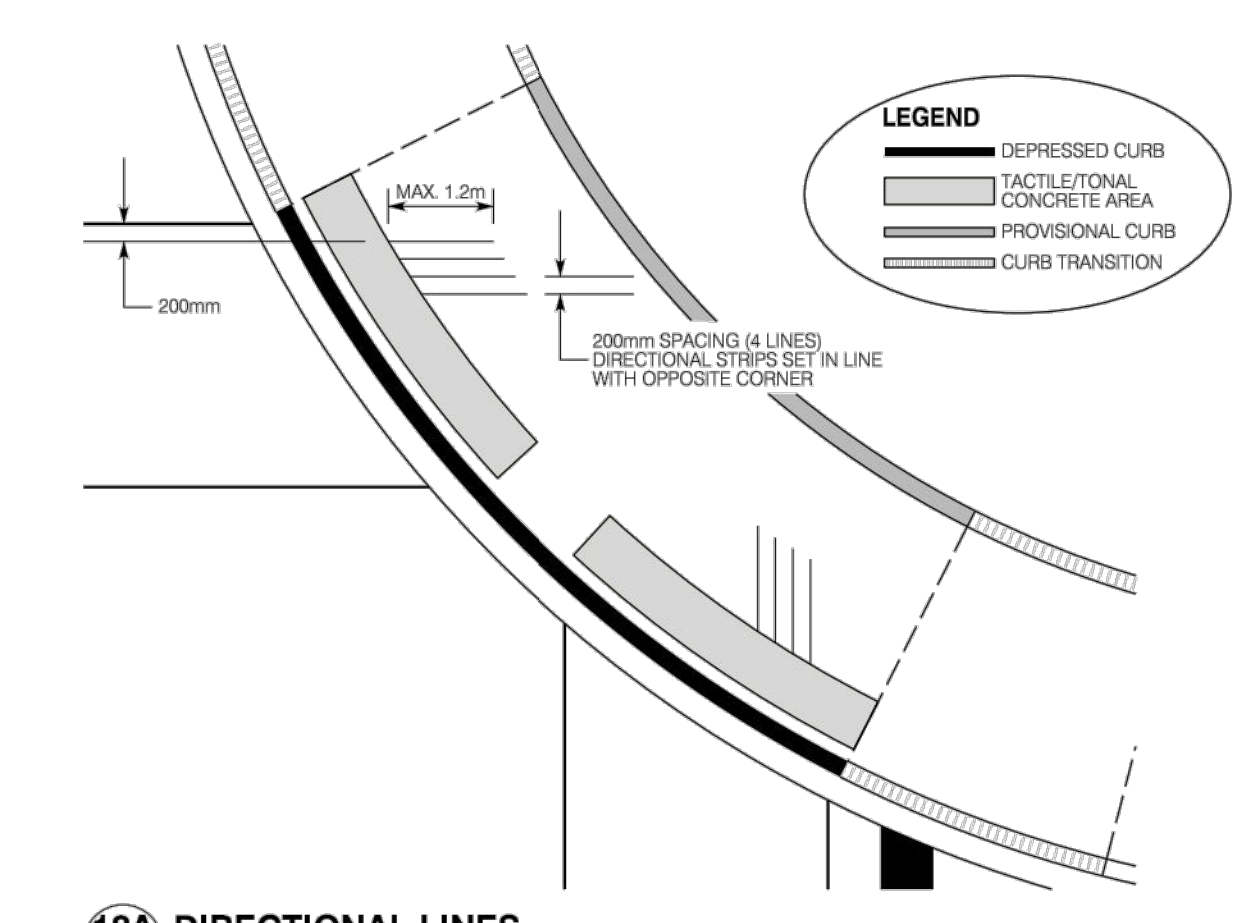
17 CONCRETE CROSSWALK



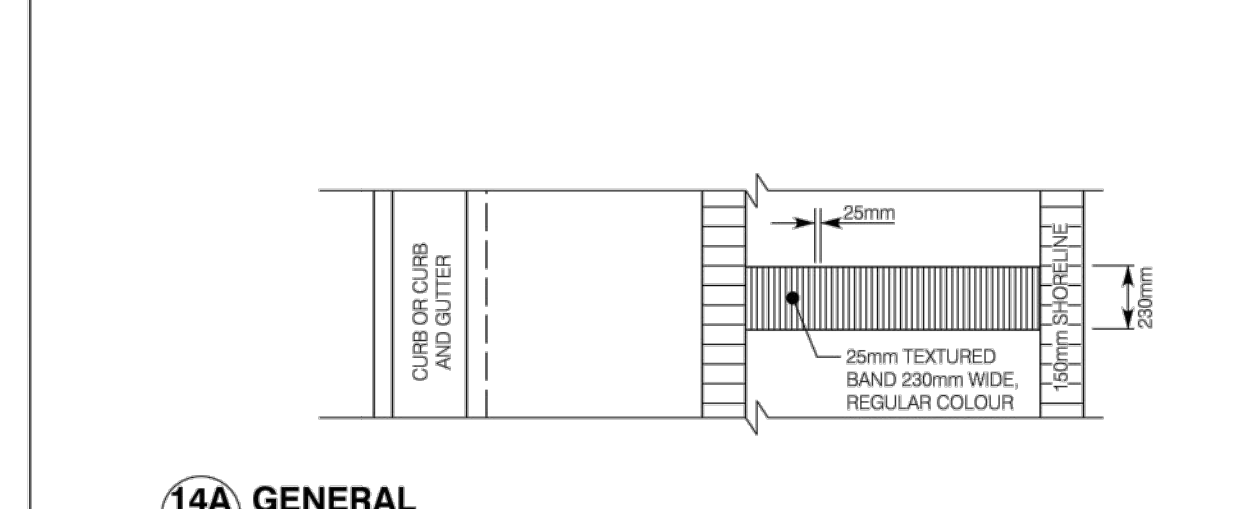
12 STREET NAME TABLET



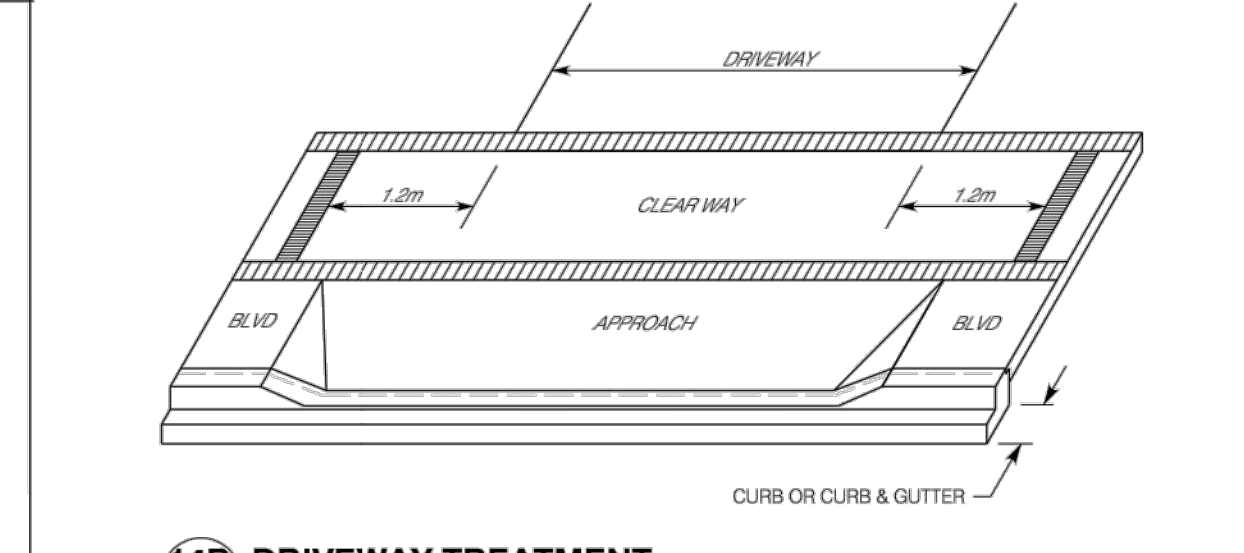
13 ENTRANCE DIAMOND AND DECISION NODE MARKER



18 DIRECTIONAL LINES AND TACTILE/TONAL CONCRETE STAMP

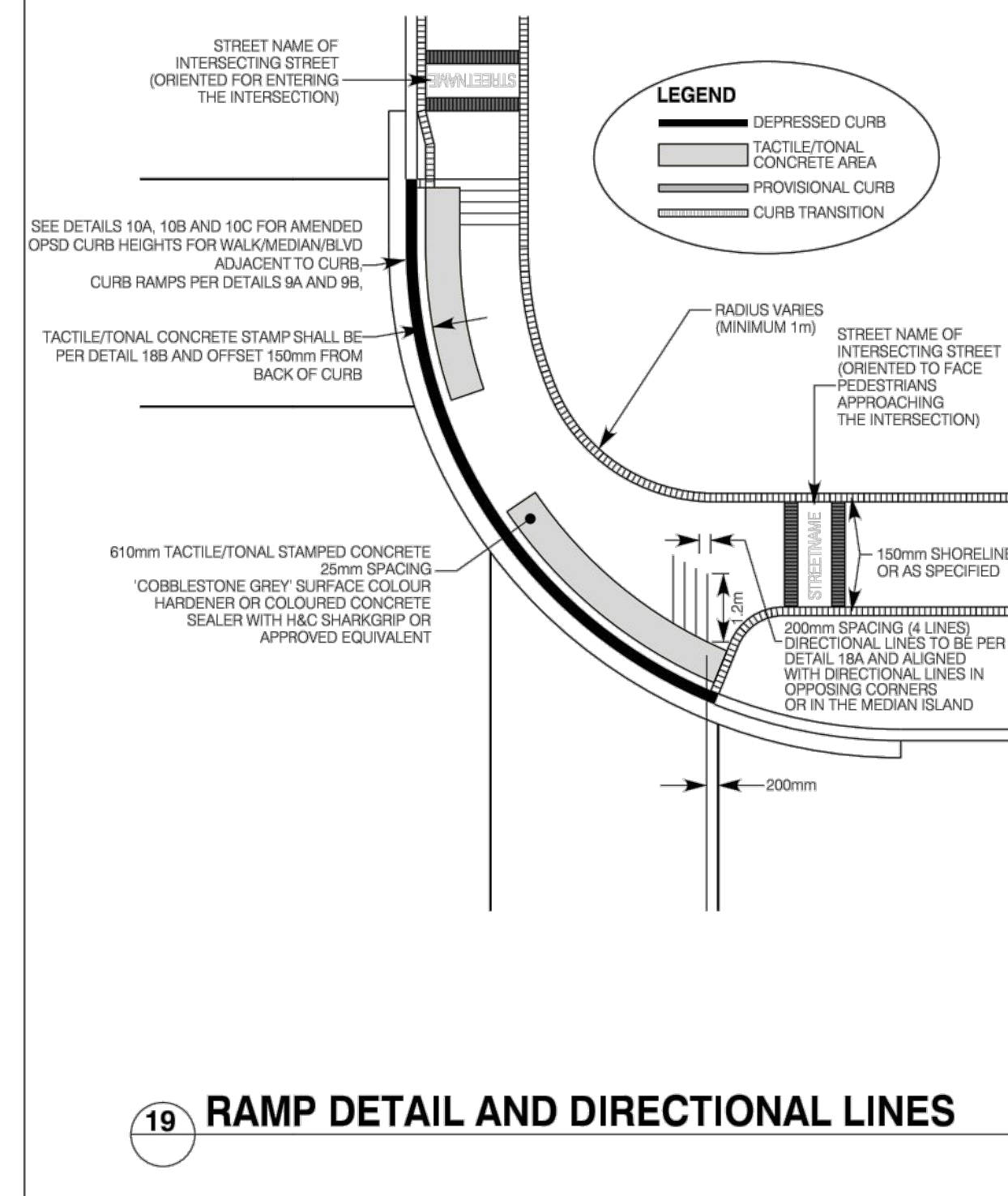


14A GENERAL



14B DRIVEWAY TREATMENT

14 25mm TEXTURED BAND - DRIVEWAYS



19 RAMP DETAIL AND DIRECTIONAL LINES

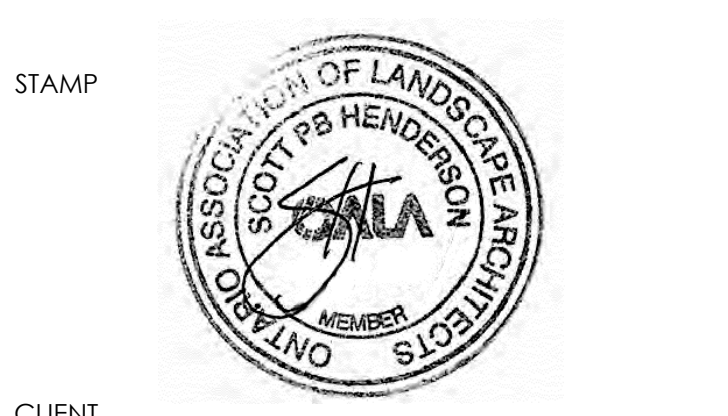
City of Hamilton  
Public Works Department

CITY OF HAMILTON - INTEGRATED ACCESSIBILITY - SIDEWALK/URBAN BRAILLE GUIDELINES

DATE: JULY 2017  
REV. NO. 1  
FORMERLY: HAMILTON STD NO. RD-124.03

NOT FOR CONSTRUCTION  
ISSUED FOR REVIEW & COMMENTS ONLY

#	DATE	DESCRIPTION
1	2022-12-19	Issued for 1st SPA Submission



CLIENT  
Belmont Equity (58 York) Hamilton Inc.

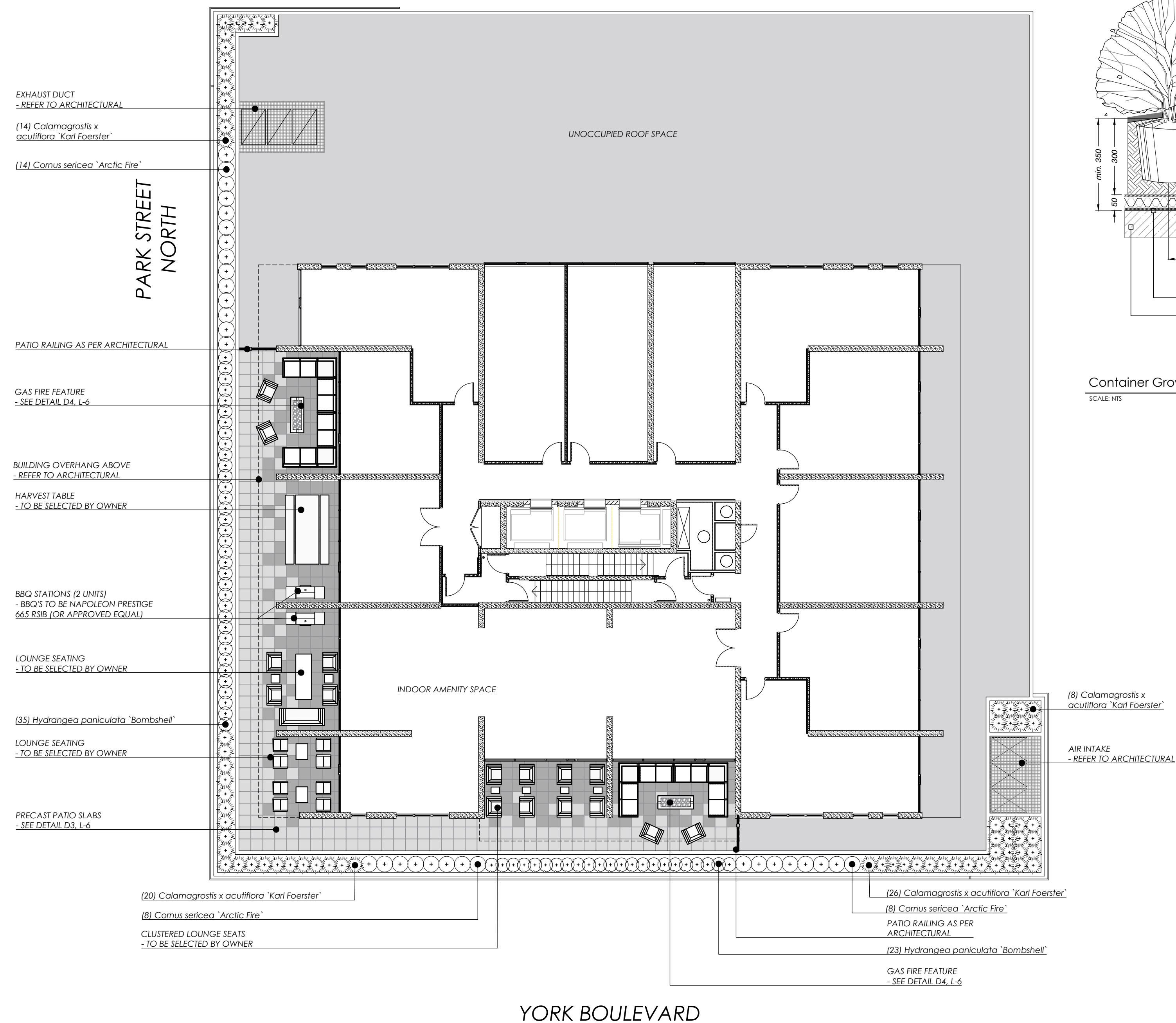
MUNICIPALITY  
City of Hamilton

PROJECT  
58 York Boulevard

SHEET  
Hamilton STD#124.03  
Urban Braille - TYP Details L-5

adesso design inc.  
landscape architecture

218 Locke Street South, 2nd Floor  
Hamilton, ON L8P 4B4  
t. 905.526.8876  
www.adessodesigninc.ca



### PLANT SCHEDULE ROOFTOP AMENITY

SHRUBS	BOTANICAL NAME	COMMON NAME	SIZE	COND.	MATURE HT. (M)	MATURE SPR. (M)	O.C. (M)	REMARKS
30	Cornus sericea 'Arctic Fire'	Arctic Fire Dogwood	50cm	#3 cont.	1.0	1.0	0.80	
58	Hydrangea paniculata 'Bombshell'	Bombshell Hydrangea	30cm	#3 cont.	0.70	0.70	0.60	

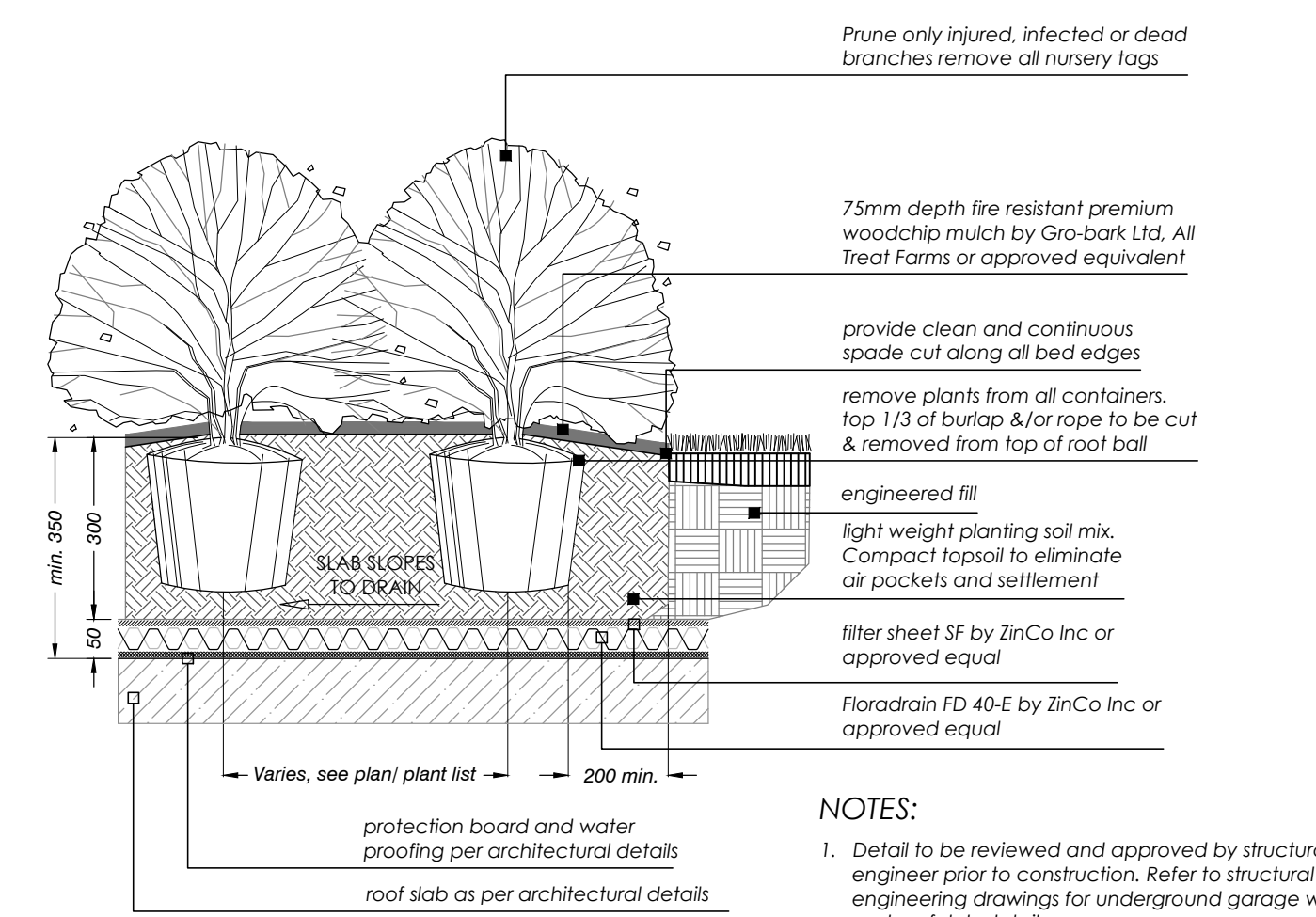
GRASSES	BOTANICAL NAME	COMMON NAME	SIZE	COND.	MATURE HT. (M)	MATURE SPR. (M)	O.C. (M)	REMARKS
68	Calamagrostis x acutiflora 'Karl Foerster'	Karl Foerster Feather Reed Grass	-	#1 cont.	1.25	0.60	0.50	

### ROOFTOP PLANTING NOTES:

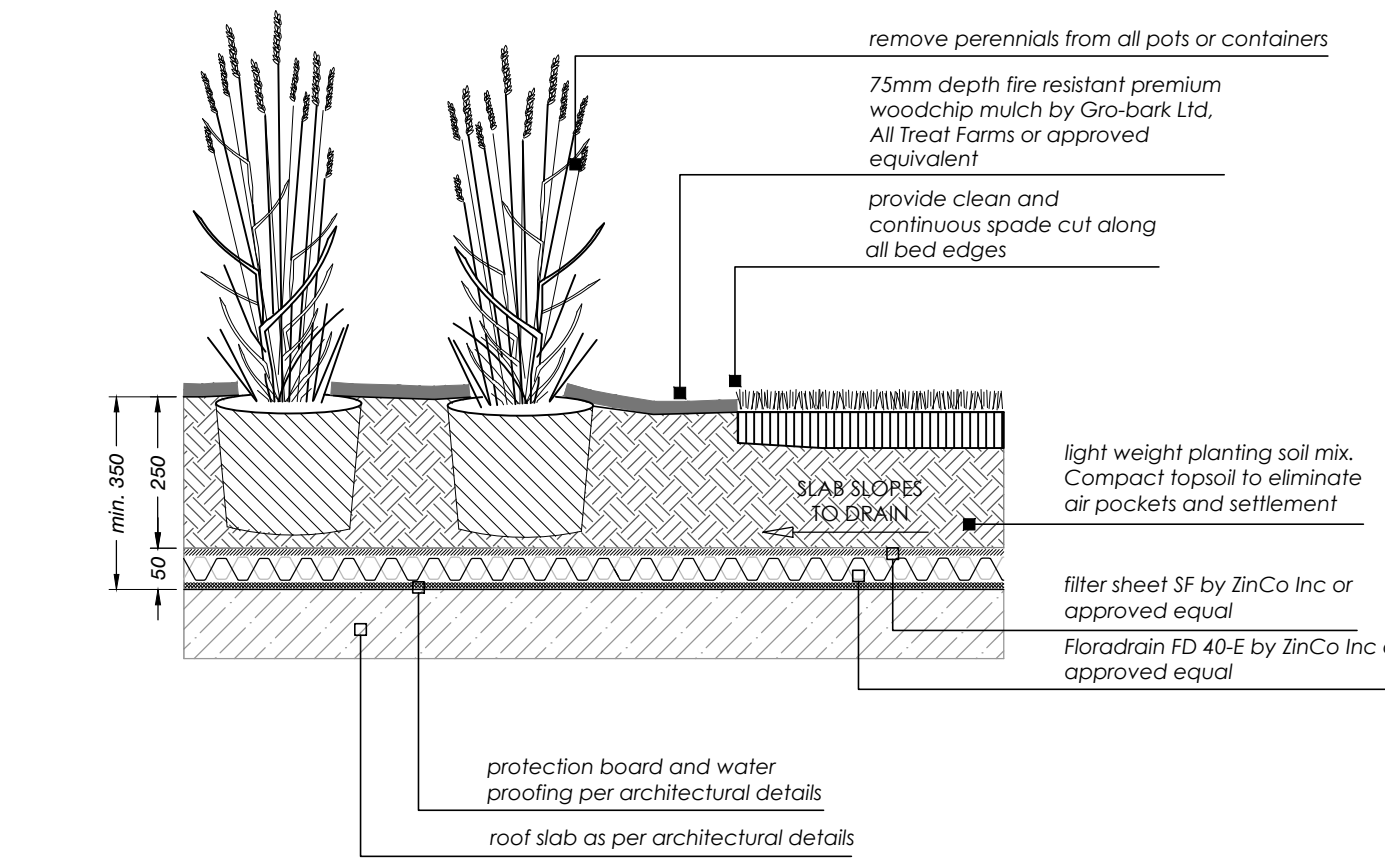
- Roof top soil mixture (light weight) or approved equal:
  - Lightweight aggregate: 35%-60%
  - Coarse sand (USGA): 25%-30%
  - Organic (compost): 15%-33%
  - Air content at maximum water capacity: 15% at 45%\*
- Max. particle size is 16mm. Min. particle size is 0.05mm. Optimal range: 1-12.5mm in diameter.
- Soil mixture will be light weight and will be free of weed seeds.
- Growing medium/soil mixture to be finalized with manufacturer/supplier prior to installation and will be appropriate to local climate and building situation.
- Growing medium/soil mixture will be ordered from a local supplier.
- If growing medium is left exposed for a period of time it should be covered with an erosion blanket, blanket to be firmly secured to roof.
- All mulch on rooftop to be fire resistant.
- All dimensions are in mm unless otherwise noted.

### ROOFTOP NOTES:

- All fencing and structure fastening details to be reviewed and approved by structural engineer prior to construction.
- Roof top materials to be reviewed and approved by structural engineer prior to construction with respect to weight and loading capacity.
- For roof drainage refer to architectural/engineering drawings.
- For roof top guardrail details refer to architectural drawings.
- All construction to conform to local building codes.
- Contractor responsible for permitting as required.
- Contractor to verify with general contractor/roof membrane supplier that constructed works will not adversely affect membrane warranty.
- Planting medium as specified or approved equal. Utilize light weight soil enriched with high quality compost elements, frost resistant, meeting FLL standards.
- Soil should be sampled annually and fertilizer applied as needed. Fertilizer will vary with plant selection, exposure, and irrigation practices.
- All beds to be irrigated to serve the needs of the proposed planting.

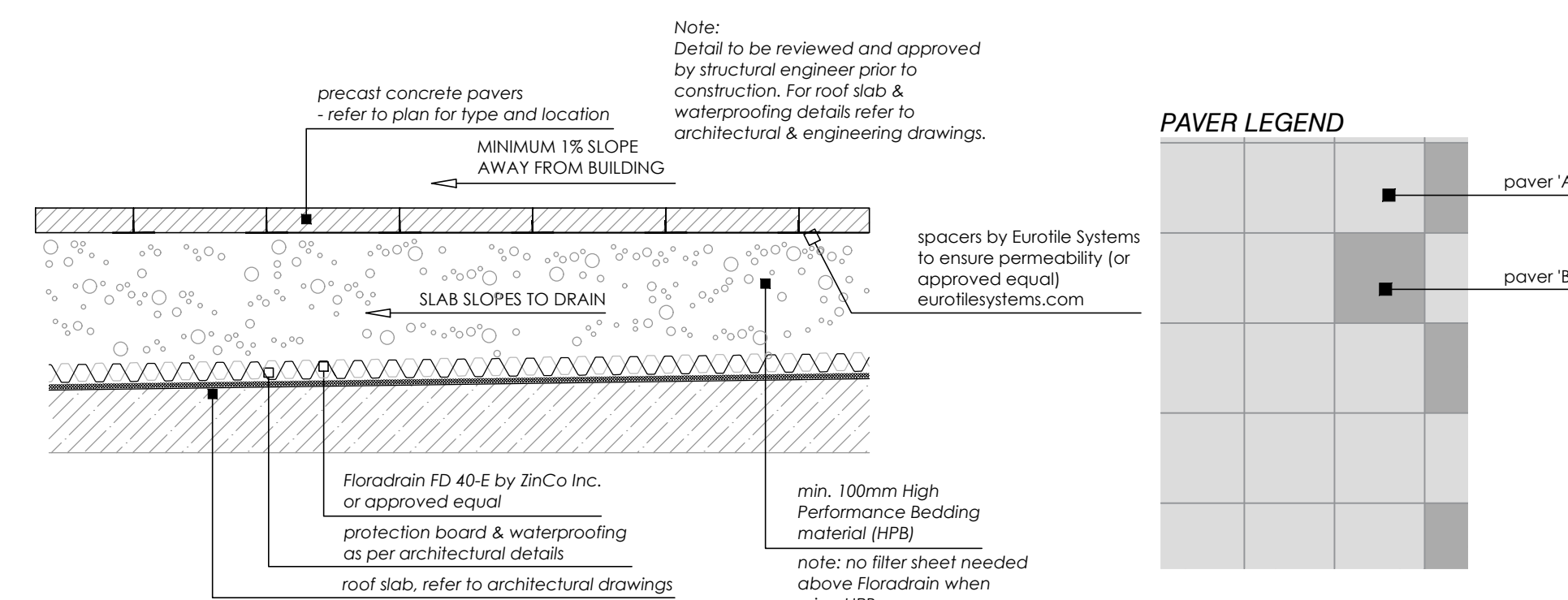


Container Grown Shrub (on slab)



Container Grown Perennial (on slab)

### SECTION - ROOFTOP APPLICATION



**PAVER LEGEND**

[Square with diagonal lines]	paver 'A'
[Square with horizontal lines]	paver 'B'

### NOTES:

- Paver types are as follows:
 

TYPE	DESCRIPTION	PATTERN	SIZE	COLOUR	LOCATION
'A'	Techo-Bloc - Industria Smooth (or approved equal)	Field	600 x 400mm	Greyed Nickel	Roof top
'B'	Techo-Bloc - Industria Smooth (or approved equal)	Field	600 x 600mm	Shale Grey	Roof top
- Unit pavers are 60mm thick. Contractor to provide samples on site to be approved by Landscape Architect and/ or Owner.
- Colours to be confirmed prior to construction.

### Pre-Cast Concrete Patio Slabs - Rooftop

Scale: NTS



The Sonoma fire pit is handmade by Dekko in North America. Ships with your choice of NG or LP burner, one decorative aggregate option and chrome ON/OFF key.

Size: 72"W x 33"D x 16"H  
CSA/UL Approved Burner Assembly

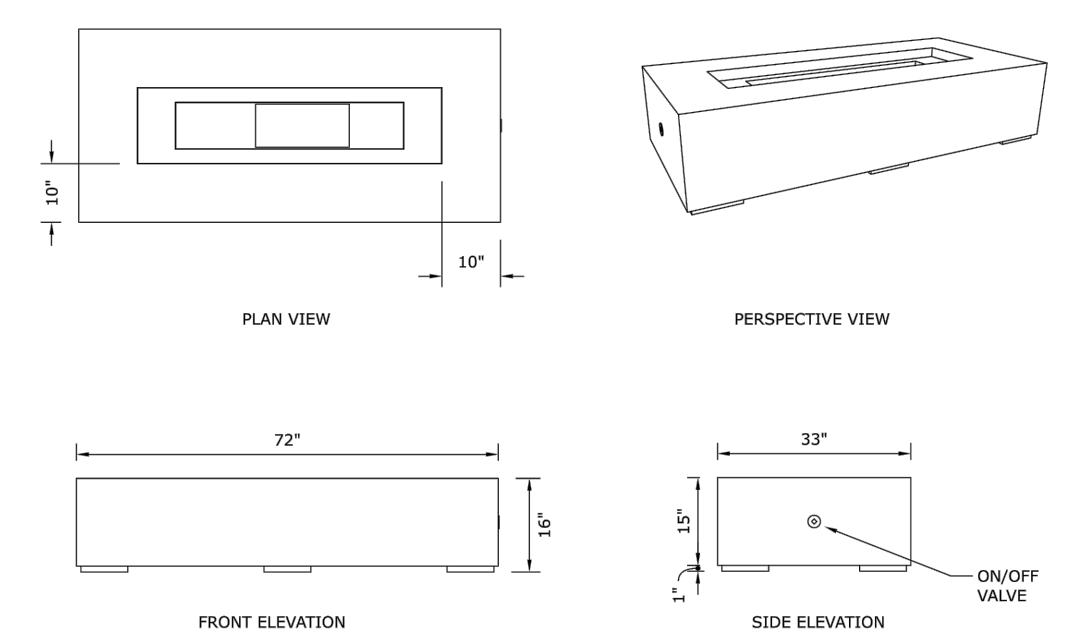
Manual Ignition	Electronic Ignition
BTU/Hr: 65,000	150,000
Weight: 215 lbs	215 lbs
Fuel Options: NG/LP	NG/LP

Optional Accessories:

- Propane Tank Cover 16"W x 16"D x 21"H
- Glass Wind Guard 55"W x 15"D x 6"H
- Wind Weather Cover
- Powder Coated Aluminum Table Top 72"W x 33"D

Colour Options: NATURAL, LIMESTONE, CLAY, ASH, SANDSTONE, CHARCOAL

Decorative Aggregate Options: IVORY BEACH STONE, SLATE BEACH STONE, BLACK LAVA ROCK



### Gas Fire Feature by Dekko or approved equal

Scale: NTS

NOT FOR CONSTRUCTION  
ISSUED FOR REVIEW & COMMENTS ONLY

### REVISIONS/ SUBMISSIONS

#	DATE	DESCRIPTION
1	2022-12-19	Issued for 1st SPA Submission

STAMP



CLIENT  
Belmont Equity (58 York) Hamilton Inc.

MUNICIPALITY  
City of Hamilton

PROJECT  
58 York Boulevard

SHEET  
Rooftop Amenity

L-6

adesso design inc.  
landscape architecture



218 Locke Street South, 2nd Floor  
Hamilton, ON L8P 4B4  
t. 905.526.8876  
www.adessodesigninc.ca