



**Engineering,
Scientific,
Planning and
Management
Consultants**

2781 Lancaster Road
Suite 200
Ottawa ON
Canada K1B 1A7

Bus 613 738 0708
Fax 613 738 0721

www.jacqueswhitford.com

**Jacques
Whitford**

**An Environment
of Exceptional
Solutions**

Registered to
ISO 9001:2000 &
ISO 14001:1996

100% Post
Consumer
Content 

FINAL REPORT

**Stage 1 Archaeological
Assessment, Watercourses 5
and 6 Class Environmental
Assessment Study, Stoney
Creek, City of Hamilton,
Ontario**

CITY OF HAMILTON

**Project No. 1020491
CIF # P002-094-2006**

PROJECT NO. 1020491

REPORT TO City of Hamilton
77 James Street North, Suite 320
Hamilton, ON L8R 2K3

ON Stage 1 Archaeological Assessment,
Watercourses 5 and 6 Environmental
Assessment Study, Stoney Creek, City Of
Hamilton, Ontario

February 8, 2007

Jacques Whitford
Suite 200, 2781 Lancaster Road
Ottawa, ON K1B 1A7

Phone: 613-738-0708
Fax: 613-738-0721



Table of Contents

1.0	INTRODUCTION	1
1.1	Proposed Project Components.....	1
2.0	PROJECT AREA	6
3.0	EXISTING CONDITIONS	8
3.1	PREHISTORIC RESOURCES	8
3.2	HISTORIC RESOURCES	9
4.0	STUDY RESULTS	11
5.0	RECOMMENDATIONS	14
6.0	CLOSURE	15
7.0	REFERENCES	16
7.1	Literature Cited	16
7.2	Personal Communications	16

List of Figures

Figure 1.1 - Location of Project Area	2
Figure 1.2 - North End of Project Area, Showing Watercourses 5 and 6 and Proposed Works.....	3
Figure 1.3 - South End of Project Area, Showing Watercourses 5 and 6 and Proposed Works.....	4
Figure 1.4 - Location of Watercourses 6.1, 6.2 and 6.3.....	5
Figure 2.1 - Soil Types in the Project Area.....	7
Figure 3.1 - Project Area as Shown on 1875 Page and Smith Historical Atlas	10
Figure 3.2 - Approximate Location of Buildings From 1875 Atlas Over Current Air Photos, North End of Project Area	12
Figure 3.3 - Approximate Location of Buildings From 1875 Atlas Over Current Air Photos, South End of Project Area	13

List of Tables

Table 1.1 - Proposed Drainage Improvement Works, Watercourses 5 and 6.....	1
Table 3.1 - Registered Heritage Buildings.....	9

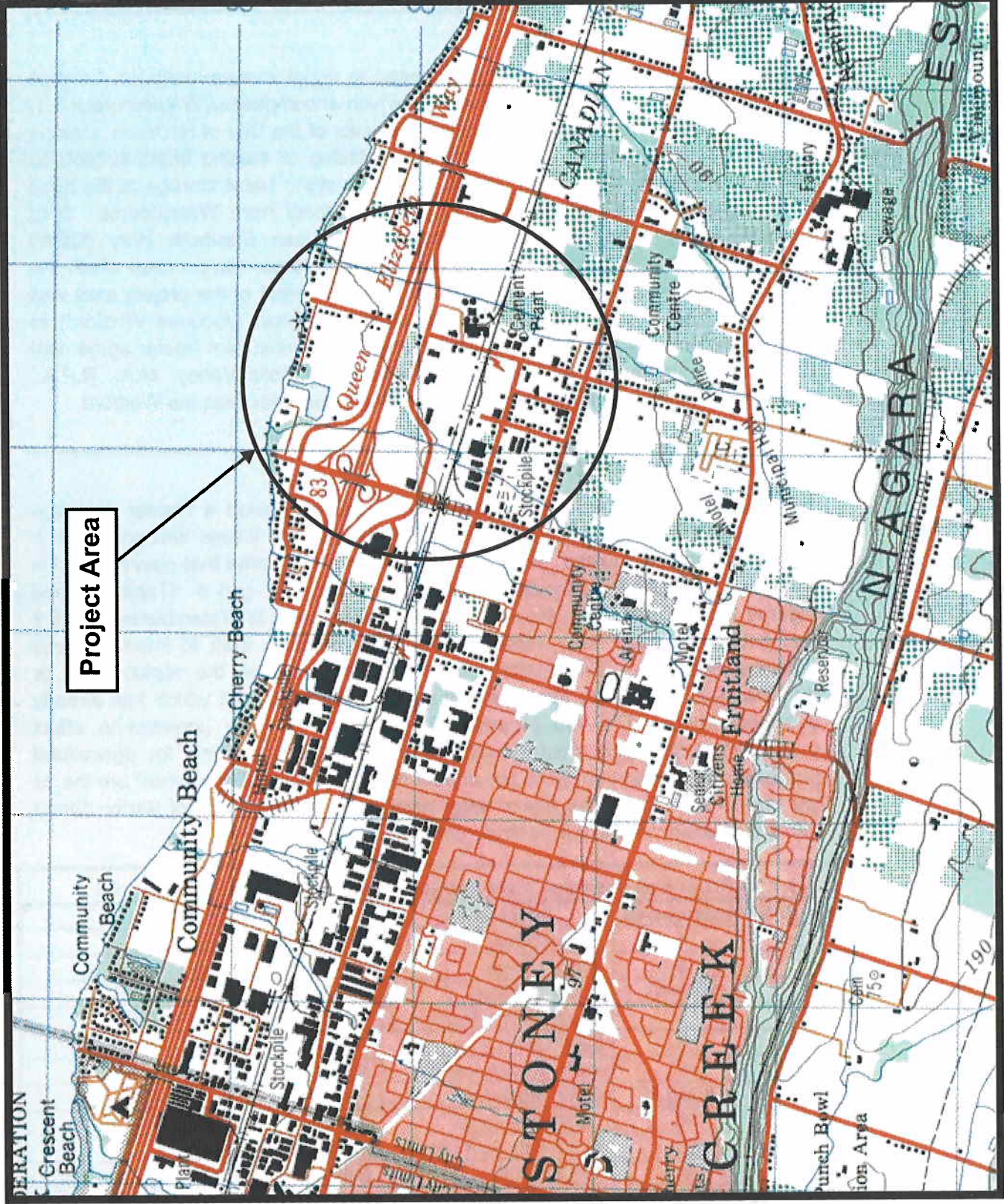
1.0 INTRODUCTION

The City of Hamilton (the City) has proposed to make improvements to drainage systems at Watercourses 5 and 6 (an area which encompasses Watercourses 5.1, 6.1, 6.2 and 6.3) in Stoney Creek, within the limits of the City of Hamilton, Ontario (Figure 1.1). Specifically the City will be replacing or making improvements to existing culverts on both watercourses, improving storm water storage at the head of Watercourse 5, and creating a diversion channel from Watercourse 6 to Watercourse 5 along the south side of the Queen Elizabeth Way (QEW) expressway. As part of the Class Environmental Assessment process which the City is undertaking, a Stage 1 Archaeological Assessment of the project area was required. The City contracted Jacques Whitford Limited (Jacques Whitford) to undertake the Stage 1 assessment under an existing Consultant Roster agreement (#18 - Archaeology). The report was prepared by Colin Varley, M.A., R.P.A., Senior Archaeologist and Heritage Planning Consultant with Jacques Whitford.

1.1 Proposed Project Components

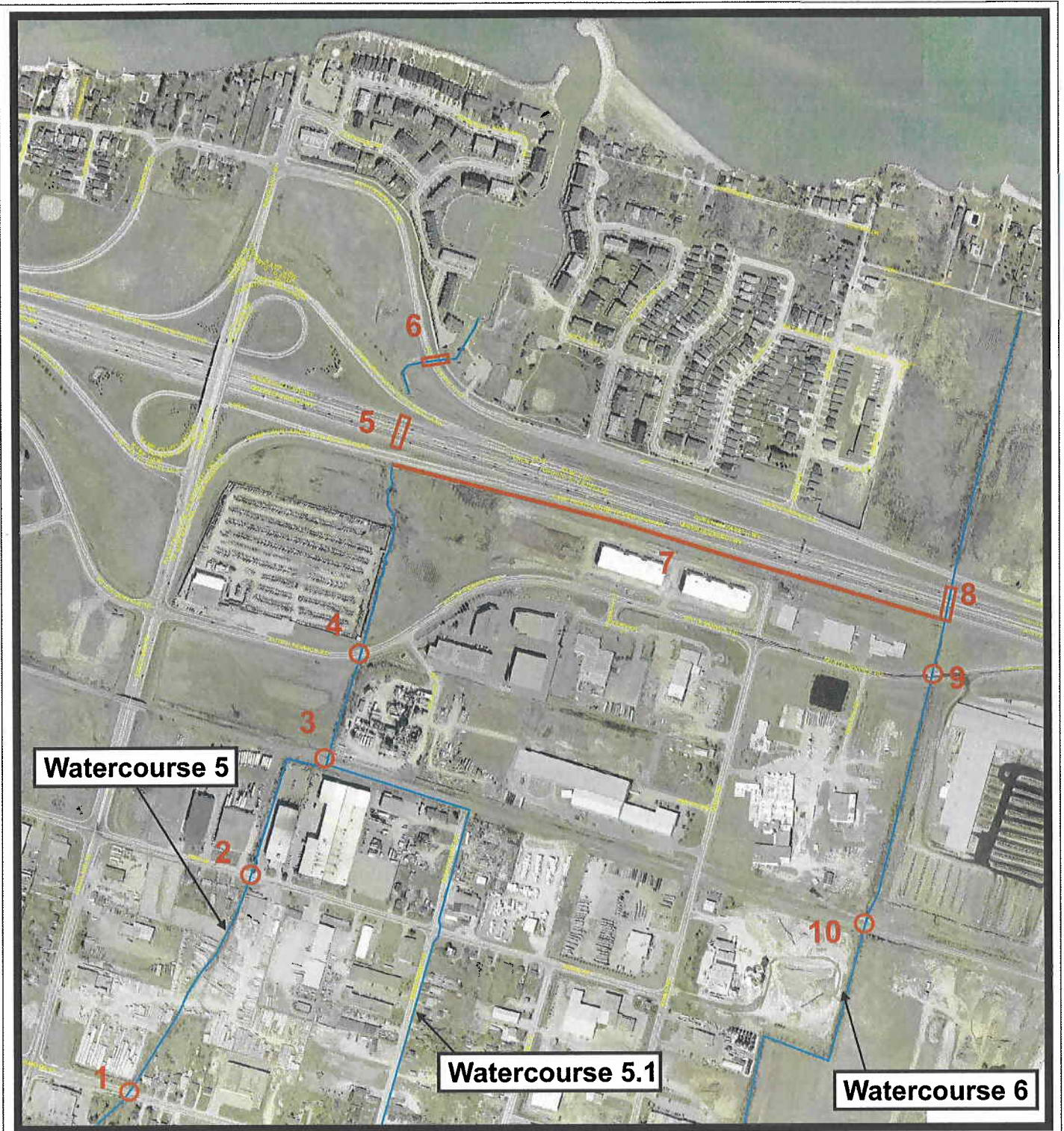
The Corporation of the City of Stoney Creek commissioned a Master Drainage Plan, submitted in 1990, that addressed future drainage issues and contained a number of proposed works. Additional reports completed after that plan resulted in a number of proposed projects for Watercourses 5, 5.1, and 6 (Table 1.1 and Figures 1.2, 1.3, and 1.4). Recommended improvements to Watercourses 6.1, 6.2 and 6.3 had already been made redundant by previous work to improve those drainage channels. The majority of the projects involve the replacement or refurbishment of existing infrastructure within limits of ground which has already been disturbed. The two projects which appear to have potential to affect previously undisturbed ground (with the exception of ploughing for agricultural purposes, which does not seriously impact on archaeological resources) are the as yet undefined limits of the storm water management area south of Barton Street and the diversion channel from Watercourse 6 to 5 south of the QEW.

Map ID #	Watercourse	Intersection	Proposed Work
1	5	Barton Street	Culvert replacement
2	5	Arvin Avenue	Culvert underpinning
3	5 and 5.1	C.N.R. rail line	Culvert replacement
4	5	South Service Road	Culvert underpinning
5	5	QEW Core Lanes	Culvert replacement
6	5	North Service Road	Addition of culvert cell
7	5 and 6	QEW, South Side	Flexible mat diversion channel
8	6	QEW Core Lanes	Culvert replacement
9	6	South Service Road	Culvert underpinning
10	6	C.N.R. rail line	Culvert replacement
11	5	South of Barton Street	Storm Water Management storage area
12	6	Barton Street	Culvert replacement

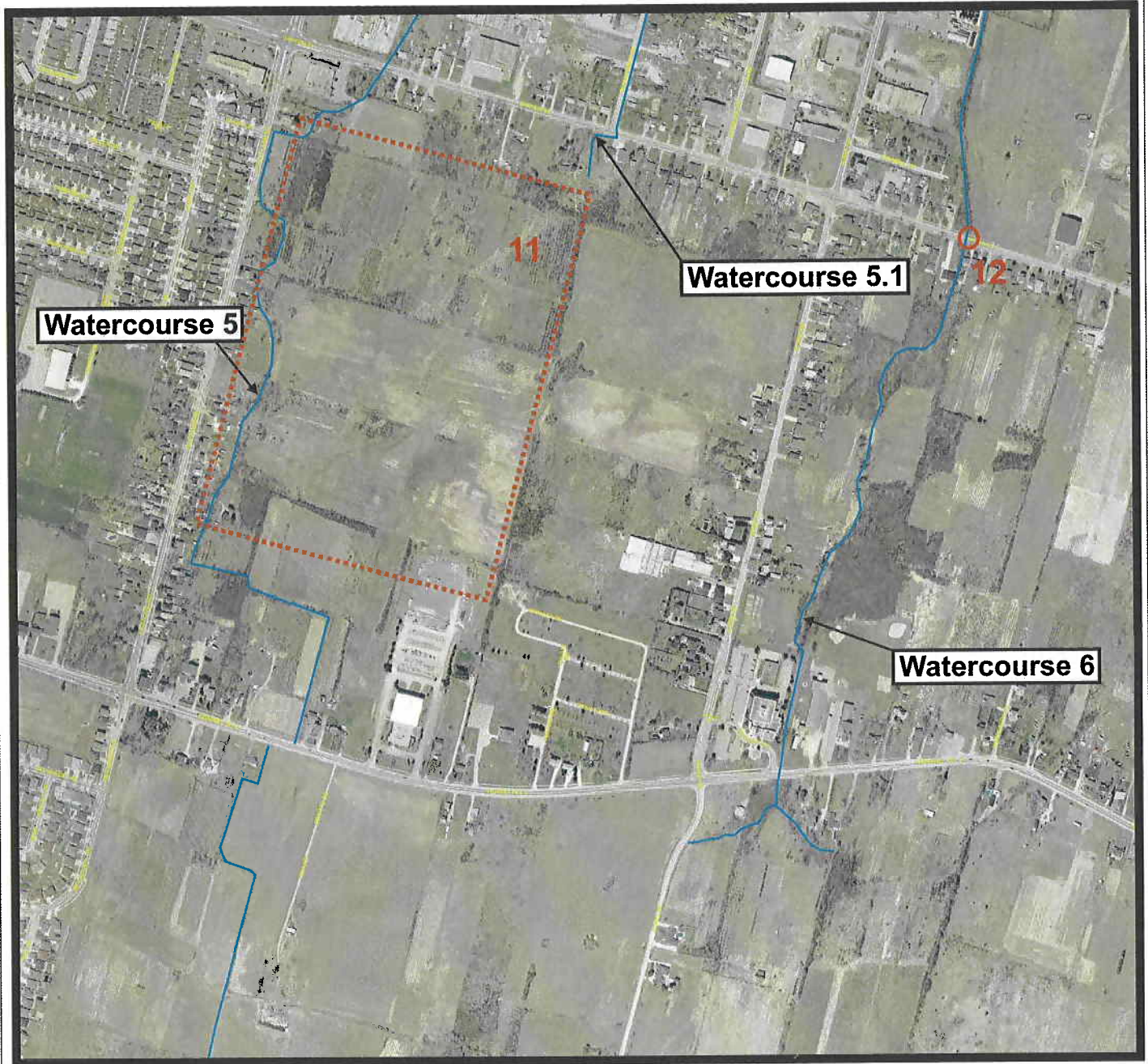


Project Area

Figure 1.1 - Location of Project Area



**Figure 1.2 - North End of Project Area,
Showing Watercourses 5, 5.1 and 6 and Proposed Works**



**Figure 1.3 - South End of Project Area,
Showing Watercourses 5, 5.1 and 6 and Proposed Works**

