

# Route Change



**Detour: July 28 – August 22, 2025: Routes 5A Delaware, 16 Ancaster, 41 Mohawk, and 43 Stone Church**

Due to reconstruction work at the Meadowlands Terminal in Ancaster, routes 5A Delaware, 16 Ancaster, 41 Mohawk, and 43 Stone Church will be on detour from Monday, July 28, 2025, at 7:00 AM to Friday, August 22, 2025, at 6:00 PM. Detour details and routing maps are provided below.

## **Detour Details:**

### **Route 5A Delaware**

Eastbound to The Meadowlands: From Golflinks Road and Legend Court, left on Legend Court, continue north and east on Legend Court, then east on Martindale Crescent to the Temporary Recovery Point on Martindale Crescent behind Sobey's.

Westbound from The Meadowlands: From the Temporary Recovery Point on Martindale Crescent behind Sobey's, continue east on Martindale Crescent, right on Neville Drive, right on Golflinks Road, and resume regular westbound routing.

### **Route 16 Ancaster**

Eastbound to The Meadowlands: From Golflinks Road and Legend Court, left on Legend Court, continue north and east on Legend Court, then east on Martindale Crescent, right on Neville Drive to the Temporary Recovery Point on Neville Drive south of Martindale Crescent.

Westbound from The Meadowlands: From the Temporary Recovery Point on Neville Drive south of Martindale Crescent, continue south on Neville Drive, right on Golflinks Road, and resume regular westbound routing.

**905-546-2489**  
**hamilton.ca/HSRdetours**  
**@HSR**



# Route Change



## **Route 41 Mohawk**

Westbound to The Meadowlands: From Golflinks Road and Martindale Crescent, continue west on Golflinks Road, right on Legend Court, and continue north and east on Legend Court to the Temporary Recovery Point on Legend Court west of Martindale Crescent.

Eastbound from The Meadowlands: From the Temporary Recovery Point on Legend Court west of Martindale Crescent, continue east on Legend Court, east on Martindale Crescent, right on Neville Drive, left on Golflinks Road, and resume regular eastbound routing.

## **Route 43 Stone Church**

Westbound to The Meadowlands: From Martindale Crescent and Neville Drive, left on Neville Drive to the Temporary Recovery Point on Neville Drive south of Martindale Crescent.

Eastbound from The Meadowlands: From the Temporary Recovery Point on Neville Drive south of Martindale Crescent, continue south on Neville Drive, left on Golflinks Road, and resume regular eastbound routing.

**Stop closures and temporary stop locations:**

**905-546-2489**  
**hamilton.ca/HSRdetours**  
**@HSR**



# Route Change

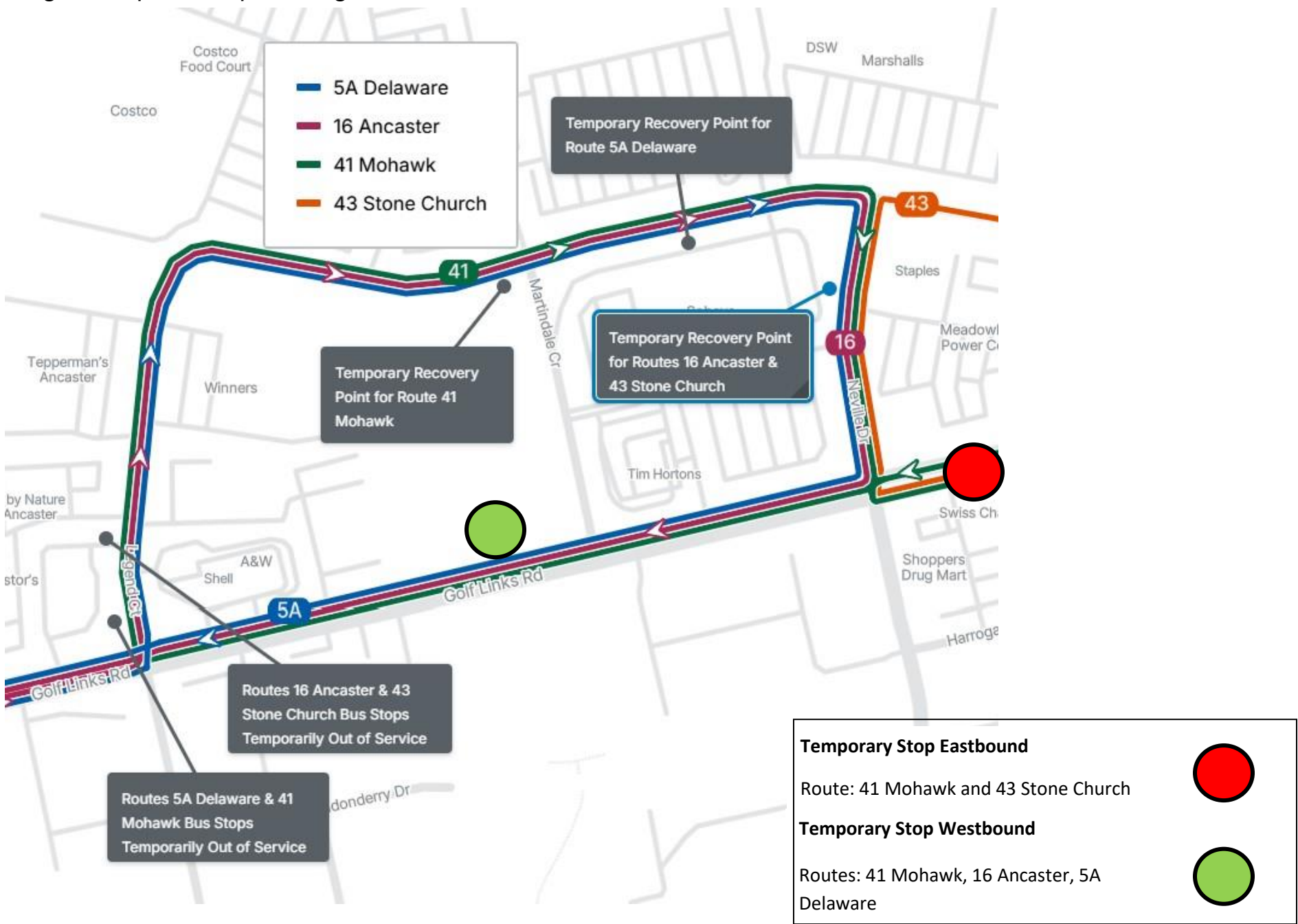


All boardings and drop-offs will occur at designated Temporary Recovery Points as outlined above. No additional stop closures or temporary stops are planned.

**Note:** A map showing the detour routings for all affected routes is available on the next page.

**Detour map:** Routes 5A Delaware, 16 Ancaster, 41 Mohawk & 43 Stone Church – Meadowlands Terminal Closure

*Image description: Map showing detour as described above.*



905-546-2489  
hamilton.ca/HSRdetours  
@HSR

