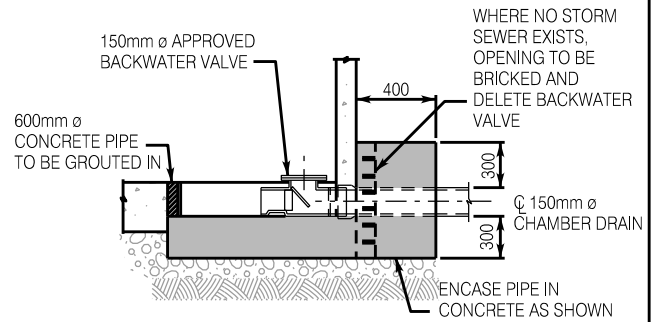
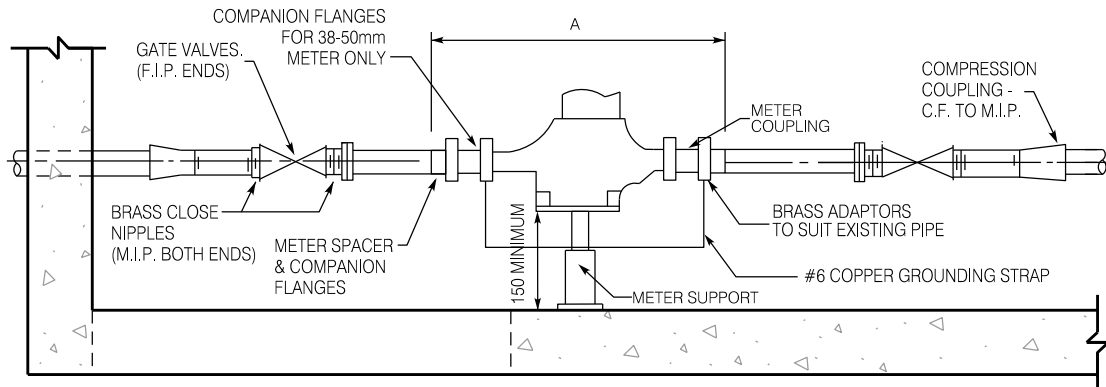


CHAMBER SIDE VIEW



BACKWATER VALVE DETAIL



METER SIDE VIEW

NOTES:

1. CHAMBER DIA. TO BE 1500mm.
2. CHAMBER FRAME AND COVER (OPSD 402.010)
3. PRECAST CONCRETE SECTIONS TO CONFORM TO A.S.T.M. C-478.
4. ALL CONCRETE TO BE 30 MPa., 28 DAY STRENGTH, TYPE 50 CEMENT.
5. ALL ADJUSTMENTS TO CHAMBER COVERS SHALL BE MADE WITH POURED CONCRETE.
6. STEPS TO BE ALUMINUM PLACED AT 300mm C.C. AS PER OPSD 405.010.
7. METER SUPPLIED AND INSTALLED BY CITY.
8. CHAMBER TO BE LOCATED ON PRIVATE PROPERTY AT THE PROPERTY LINE AS NOTED
9. METER TO BE PLACED MIN 150mm FROM CHAMBER FLOOR.
10. ALL VALVES TO BE GATE VALVES.
11. METER COUPLINGS TO BE F.I.P. TO C.F.
12. COMPANION FLANGES FOR 38-50mm METER ONLY.

		MIN. DIMENSION A (mm)	
		THREADED FITTINGS	SOLDERED FITTINGS
METER SIZE (mm)	16	500	450
	20	575	475
	25	600	525
	38 - 50	750	750

City of Hamilton
Public Works Department

**PIPING AND CHAMBER FOR RESIDENTIAL
16mm TO 50mm DIA. METER INSTALLATION**

DIMENSIONS SHOWN ARE IN MILLIMETRES
UNLESS OTHERWISE NOTED (N.T.S.)

DATE
January 2020

REV No
1

FORMERLY: WM-209

HAMILTON STD No

WM-209.01