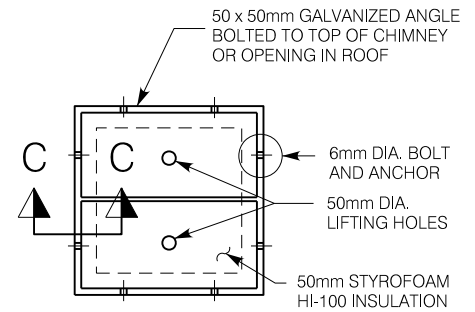
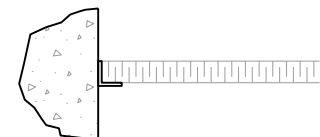


**SECTION B-B
DOGHOUSE DETAIL**



**CHAMBER COVER
INSULATION DETAIL
PLAN VIEW**



SECTION C-C

NOTES:

1. PRECAST CHAMBERS AND SECTIONS SHALL BE MANUFACTURED TO ASTM C-478, CSA, MEET H-20 S16 LOADING REQUIREMENTS AND IN ACCORDANCE WITH THE APPROVED PRODUCTS LIST.
2. FILL ALL JOINTS AND LIFTING HOLES (INSIDE & OUT) 15mm THICK WITH 1:3 NON-SHRINK MORTAR MIX.
3. ALL ADJUSTMENTS TO CHAMBER AND KEY COVERS SHALL BE MADE WITH POURED CONCRETE.
4. ALL CONCRETE TO BE 32 MPa., TYPE 50 CEMENT.
5. FASTEN INSULATION TO CEILING WITH 50mm DIA. WASHERS (GALVANIZED) & 6mm DIA. TAPCON CONCRETE ANCHORS @ 450mm CENTRES.
6. DOGHOUSE OPENING TO BE CUT OUT MIN. 50mm LARGER THAN O.D. OF PROPOSED WATERMAIN. PIPE TO BE WRAPPED WITH MIN. 50mm THICK OF PLAST MASTIC MATERIAL. REMAINING CAVITY TO BE GROUTED.
7. ALL FLANGES TO BE IN ACCORDANCE WITH ANSI / AWWA
8. ALL METAL COMPONENTS IN VALVE CHAMBERS, INCLUDING STAINLESS STEEL NUTS AND BOLTS, SHALL HAVE A PROTECTIVE CORROSION TAPE COATING SYSTEM (PRIMER, MASTIC AND TAPE). PROTECTIVE CORROSION TAPE COATING IS NOT REQUIRED ON VALVE BODIES.
9. CHAMBER PIPING SHALL BE DUCTILE IRON CLASS 54.
10. WATERPROOF MEMBRANE SHALL BE APPLIED TO ALL CHAMBER WALLS PRIOR TO BACKFILLING.
11. APPROVED RESTRAINED COUPLING SHALL BE IN ACCORDANCE WITH THE APPROVED PRODUCTS LIST.

CHAMBER SIZE TABLE	
VALVE SIZE	CHAMBER SIZE
150mm	1500mm Ø
200mm	1500mm Ø
300mm	1800mm Ø

City of Hamilton
Public Works Department

**CHECK VALVE AND CHAMBER
150mm DIA. TO 300mm DIA. WATERMAINS**

DIMENSIONS SHOWN ARE IN MILLIMETRES
UNLESS OTHERWISE NOTED (N.T.S.)

DATE
February 2021

REV No

FORMERLY:

HAMILTON STD No

WM-201.05