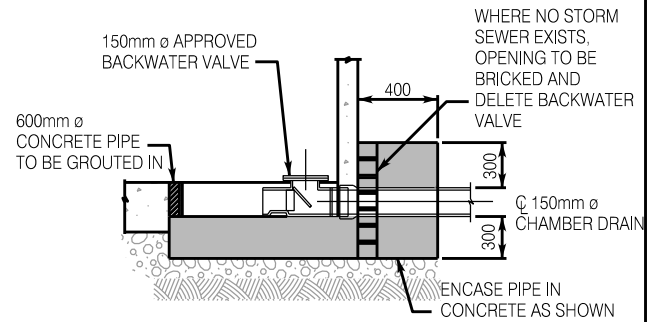
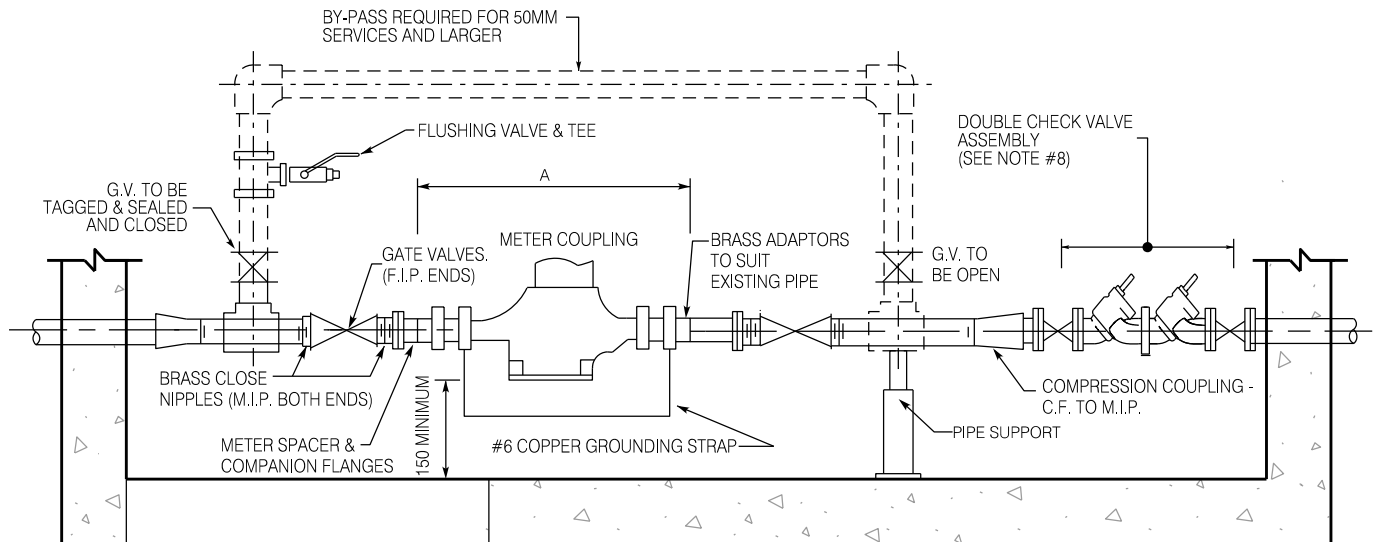


CHAMBER SIDE VIEW



BACKWATER VALVE DETAIL



METER SIDE VIEW

NOTES:

1. CHAMBER FRAME AND COVER (OPSD 402.010).
2. PRECAST CONCRETE SECTIONS TO CONFORM TO A.S.T.M. C-478.
3. ALL CONCRETE TO BE 30 MPa., 28 DAY STRENGTH, TYPE 50 CEMENT.
4. ALL ADJUSTMENTS TO CHAMBER COVERS SHALL BE MADE WITH POURED CONCRETE.
5. METER SUPPLIED AND INSTALLED BY CITY.
6. METER TO BE PLACED MIN 150mm FROM CHAMBER FLOOR.
7. CHAMBER TO BE LOCATED ON PRIVATE PROPERTY AT THE PROPERTY LINE.
8. APPLICABLE BACKFLOW PREVENTION ASSEMBLY TO BE PLACED NO MORE THAN 3.0m DOWNSTREAM OF THE METER/BY-PASS ASSEMBLY.
9. WHERE UNABLE TO CONNECT TO STORM SEWER PLACE DOUBLE CHECK VALVE IN INSULATED ENCLOSURE AS PER WM-209.03.
10. ALL VALVES TO BE GATE VALVES.
11. METER COUPLINGS TO BE F.I.P TO C.F.
12. COMPANION FLANGES FOR 38-50mm METER ONLY.

PD - POSITIVE DISPLACEMENT METER
CMP - COMPOUND METER

METER SIZE	CHAMBER DIAMETER 'B' (mm)
16-25	1500
38 - 50	1800

MIN. DIMENSIONS (mm)			
A			
METER TYPE		METER SIZE	THREADED FITTINGS
		SOLDERED FITTINGS	
PD		16	500
		20	575
		25	600
		38 - 50	750
CMP		50	850

City of Hamilton
Public Works Department

**PIPING AND CHAMBER FOR MULTI-UNIT RESIDENTIAL
(3 STOREYS AND ABOVE) OR ICI MODERATE HAZARD
16mm TO 50mm DIA. METER INSTALLATION**

DIMENSIONS SHOWN ARE IN MILLIMETRES
UNLESS OTHERWISE NOTED (N.T.S.)

DATE
JANUARY 2020

REV No
1

FORMERLY: WM209

HAMILTON STD No

WM-209.02