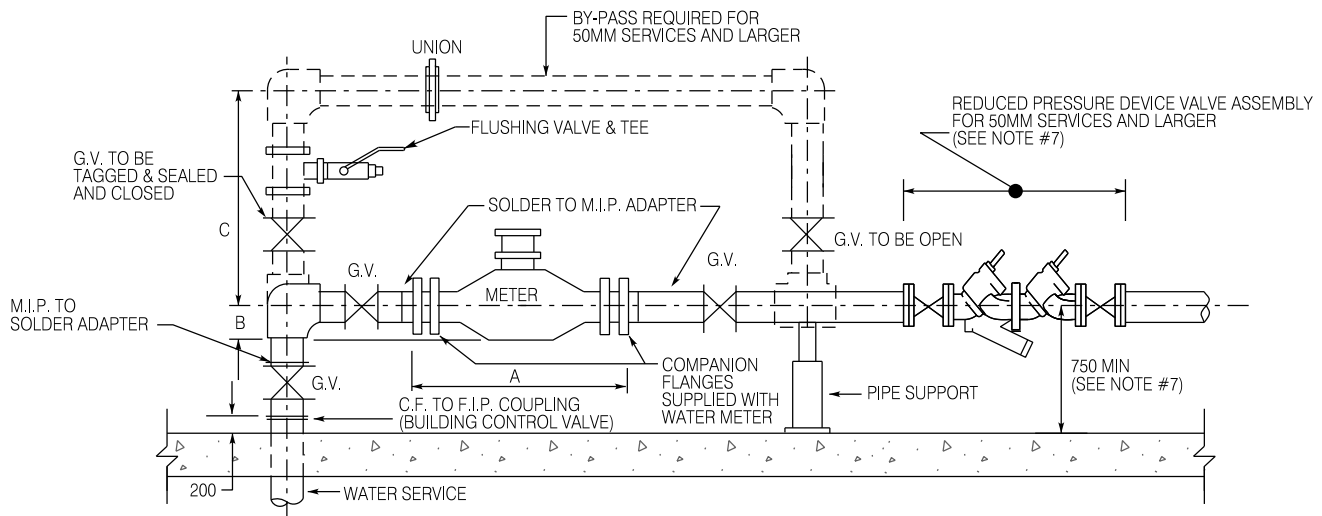


**PIPING FOR 16mm DIA. TO 50mm DIA. METER WITH BY-PASS USING RIGID COPPER PIPE (SOLDERED FITTINGS & GATE VALVES)**



**PIPING WITH 16mm DIA. TO 50mm DIA. METER WITH BY-PASS USING BRASS PIPE (F.I.P. THREADED FITTINGS & GATE VALVES)**

**NOTES:**

1. G.V. - GATE VALVE
2. ALL GATE VALVES TO BE INSTALLED WITH VALVE STEM IN HORIZONTAL POSITION
3. METER SUPPLIED AND INSTALLED BY CITY
4. APPROVED PIPE JOINT COMPOUND TO BE USED ON ALL THREADED JOINTS
5. BY-PASS PIPING NOT REQUIRED FOR SINGLE FAMILY DWELLING
6. MIN. 4-13mm DIA S.S. ANCHOR RODS, S.S. NUTS & S.S. WASHERS, OR, UNI FLANGE ADAPTER OR APPROVED EQUAL
7. APPLICABLE BACKFLOW PREVENTION ASSEMBLY TO BE PLACED NO MORE THAN 3.0m DOWNSTREAM OF THE METER/BY-PASS ASSEMBLY, AND KEPT A MINIMUM OF 750mm FROM FLOOR.

		MIN. DIMENSIONS (mm)				
		METER SIZE	A		B	C
	THREADED FITTINGS		SOLDERED FITTINGS			
METER TYPE	PD	16	500	450	44	750
		20	575	475	44	750
		25	600	525	50	750
		38 - 50	750	750	59	750
	CMP	50	850	850	81	750

PD - POSITIVE DISPLACEMENT METER

CMP - COMPOUND METER

City of Hamilton  
Public Works Department

**PIPING FOR ICI, HIGH HAZARD  
16mm TO 50mm DIA. METER  
FOR INTERNAL INSTALLATION**

DIMENSIONS SHOWN ARE IN MILLIMETRES UNLESS OTHERWISE NOTED (N.T.S.)

DATE: DRAFT  
JUNE 2019

REV No

FORMERLY: WM-210

HAMILTON STD No

**WM-210.03**