

NOTE

1. A "Verification of Tree Protection Letter" by the tree management professional is to be provided to the Director of Planning at the City of Hamilton to confirm that all tree protection measures have been installed prior to the undertaking of any grading activities.

2. Any arborist completing tree removals on-site is required to have a tree cutting licence with the City of Hamilton. Please contact the City's licensing section (licensing@hamilton.ca) for licensing or further information.

HAND PRUNING /DIGGING NOTE

NOTE:

1. Any work within the dripelines of a tree to be preserved, to be completed carefully by hand under supervision of a qualified tree professional. Any required root pruning to be completed by a qualified tree professional.

NOTE:

1. Permission for removal of Tree 66, 67, 68, and 69 from the Neighbouring landowner(s) is required prior to construction.

2. Neighbouring landowner(s) shall be notified of any possible impact to Tree 3-6, Tree 7-26, and Tree 31-51 prior to construction.

PRIVATE TREES >10cm DBH TO BE REMOVED:	30
MUNICIPAL TREES TO BE REMOVED*:	3
REQUIRED COMPENSATION TREES (1:1):	33
FUTURE STREET TREES:	18
PROPOSED TREES (SEE LANDSCAPE PLAN)	20
OUTSTANDING COMPENSATION TREES TO BE COMPENSATED FOR THROUGH CASH-IN-LIEU PAYMENT	0

*Removal of municipal trees requires approval from City of Hamilton Urban Forestry prior to removal.



Tree #3



Tree #6



Tree #27



Tree #51



Tree #68 - 69



Tree #77-78

KEY MAP - N.T.S.



LEGEND

- property line
- 2 existing tree number (refer to chart)
- existing vegetation to remain
- existing vegetation to be removed
- existing elevations
- tree protection fence (with silt fence)
- see detail D1, L-2

NOT FOR CONSTRUCTION
ISSUED FOR REVIEW & COMMENTS ONLY

NOTE:
Vegetation inventory undertaken by Adesso Design Inc., on 2025-06-02.

REVISIONS/ SUBMISSIONS

#	DATE	DESCRIPTION
1	2025-06-12	Issued for review
2	2025-08-20	Issued for submission

STAMP



CLIENT
Royal Living Development Group
MUNICIPALITY
City of Hamilton

PROJECT
1694 Upper James Street
Hamilton, ON

MUNICIPAL FILE NUMBER

SHEET
Tree Protection Plan

L-1

adesso design inc.
landscape architecture

69 John Street South, Suite 250
Hamilton, ON L8N 2B9
t. 905.526.8876
www.adessodesigninc.ca

EXISTING VEGETATION IDENTIFICATION TABLE

Tree #	Species (Common Name)	Species (Botanical Name)	DBH (cm)	Crown Class*	Condition**	Crown Width (m)	Comments	Potential Impacts from Construction	Ownership	Recommendation
1	Crimson King Norway Maple	Acer platanoides 'Crimson King'	52	D	G	5	Included bark, not surveyed	Conflict with proposed building	Private	Remove
2	Japanese Maple	Acer palmatum	9, 11, 10, 8, 6	D	G	4.5	Unions at base, not surveyed	Conflict with proposed building	Private	Remove
3	Eastern White Cedar	Thuja occidentalis	28	D	FG	3	Not surveyed	None	Neighbouring	Save
4	Black Walnut	Juglans nigra	15	CD	P	3.5	Peeling bark, dead/broken branches, not surveyed	None	Neighbouring	Save
5	Black Walnut	Juglans nigra	15, 13	CD	FG	4	Union at base, asymmetrical crown, not surveyed	None	Neighbouring	Save
6	Silver Maple	Acer saccharinum	102	CD	FG	13	Wire through canopy, not surveyed	None	Neighbouring	Save
7	Eastern White Cedar	Thuja occidentalis	16	CD	F	1.5	Cut leaders, included bark, not surveyed	None	Neighbouring	Save
8	Eastern White Cedar	Thuja occidentalis	12	CD	F	1.5	Asymmetrical crown, cut leader, not surveyed	None	Neighbouring	Save
9	Eastern White Cedar	Thuja occidentalis	10	CD	FG	1.5	Asymmetrical crown, not surveyed	None	Neighbouring	Save
10	Eastern White Cedar	Thuja occidentalis	11	CD	F	1.5	Asymmetrical crown, cut leader, not surveyed	None	Neighbouring	Save
11	Eastern White Cedar	Thuja occidentalis	10, 11	CD	F	1.5	Cut leaders, not surveyed	None	Neighbouring	Save
12	Eastern White Cedar	Thuja occidentalis	10	CD	FG	1.5	Asymmetrical crown, cut leader, not surveyed	None	Neighbouring	Save
13	Eastern White Cedar	Thuja occidentalis	15	CD	F	1.5	Included bark, multiple leaders, cut leaders, not surveyed	None	Neighbouring	Save
14	Eastern White Cedar	Thuja occidentalis	12	CD	F	1.5	Asymmetrical crown, cut leader, not surveyed	None	Neighbouring	Save
15	Eastern White Cedar	Thuja occidentalis	13	CD	F	1.5	Included bark, cut leaders, asymmetrical crown, not surveyed	None	Neighbouring	Save
16	Eastern White Cedar	Thuja occidentalis	10	CD	FG	1.5	Asymmetrical crown, cut leader, not surveyed	None	Neighbouring	Save
17	Big Tooth Maple	Acer grandidentatum	12, 12	CD	P	2	Cut stems, epicormic branching, growing in chain link fence, not surveyed	None	Boundary	Save
18	Big Tooth Maple	Acer grandidentatum	25	CD	P	2.5	Cut stem, epicormic branching, growing in chain link fence, not surveyed	None	Boundary	Save
19	Eastern White Cedar	Thuja occidentalis	12	CD	FG	1.5	Asymmetrical crown, cut leader, not surveyed	None	Neighbouring	Save
20	Eastern White Cedar	Thuja occidentalis	11	CD	FG	1	Cut leader, not surveyed	None	Neighbouring	Save
21	Eastern White Cedar	Thuja occidentalis	15	CD	F	1.5	Asymmetrical crown, cut leader, not surveyed	None	Neighbouring	Save
22	Eastern White Cedar	Thuja occidentalis	14	CD	F	1	Asymmetrical crown, cut leader, not surveyed	None	Neighbouring	Save
23	Eastern White Cedar	Thuja occidentalis	14	CD	F	1.5	Asymmetrical crown, cut leader, not surveyed	None	Neighbouring	Save
24	Eastern White Cedar	Thuja occidentalis	10	CD	FG	1	Cut leader, not surveyed	None	Neighbouring	Save
25	Eastern White Cedar	Thuja occidentalis	15	CD	F	1.5	Cut leaders, included bark, not surveyed	None	Neighbouring	Save
26	Eastern White Cedar	Thuja occidentalis	12	CD	FG	2	Asymmetrical crown, cut leader, not surveyed	None	Neighbouring	Save
27	White Mulberry	Morus alba	12, 10	CD	F	3.5	Union at base, asymmetrical crown, not surveyed	Conflict with proposed underground	Private	Remove
28	White Spruce	Picea glauca	46	CD	G	4.5		Conflict with proposed parking area	Private	Remove
29	Colorado Blue Spruce	Picea pungens	40	CD	G	4	Slight lean east	Conflict with proposed driveway	Private	Remove
30	Eastern White Cedar	Thuja occidentalis	15	CD	FP	2	Lean east, cavity at base, included bark	Conflict with proposed driveway	Private	Remove
31	Eastern White Cedar	Thuja occidentalis	14	CD	F	1.5	Cut leader, wire above, not surveyed	None	Neighbouring	Save
32	Eastern White Cedar	Thuja occidentalis	13	CD	F	1.5	Asymmetrical crown, cut leader, not surveyed	None	Neighbouring	Save
33	Eastern White Cedar	Thuja occidentalis	13	CD	F	1.5	Asymmetrical crown, not surveyed	None	Neighbouring	Save
34	Eastern White Cedar	Thuja occidentalis	11	CD	F	1.5	Included bark, cut leader, asymmetrical crown, not surveyed	None	Neighbouring	Save
35	Eastern White Cedar	Thuja occidentalis	12, 15, 14	CD	FP	2	Union at base, asymmetrical crown, cut leaders, not surveyed	None	Neighbouring	Save
36	Eastern White Cedar	Thuja occidentalis	10	CD	F	1.5	Asymmetrical crown, cut leader, not surveyed	None	Neighbouring	Save
37	Eastern White Cedar	Thuja occidentalis	13	CD	FP	1.5	Asymmetrical crown, dead/broken branches, cut leader, not surveyed	None	Neighbouring	Save
38	Eastern White Cedar	Thuja occidentalis	10	CD	G	1.5	Asymmetrical crown, not surveyed	None	Neighbouring	Save
39	Eastern White Cedar	Thuja occidentalis	14	CD	F	1.5	Cut leader, not surveyed	None	Neighbouring	Save
40	Eastern White Cedar	Thuja occidentalis	15	CD	F	1.5	Asymmetrical crown, cut leader, not surveyed	None	Neighbouring	Save

41	Eastern White Cedar	Thuja occidentalis	11	CD	FG	1	Cut leader, not surveyed	None	Neighbouring	Save
42	Eastern White Cedar	Thuja occidentalis	11	CD	FG	1.5	Asymmetrical crown, cut leader, not surveyed	None	Neighbouring	Save
43	Eastern White Cedar	Thuja occidentalis	10	CD	FG	1.5	Asymmetrical crown, not surveyed	None	Neighbouring	Save
44	Eastern White Cedar	Thuja occidentalis	12	CD	FG	1.5	Asymmetrical crown, not surveyed	None	Neighbouring	Save
45	Eastern White Cedar	Thuja occidentalis	11	CD	FG	1.5	Asymmetrical crown, cut leader, not surveyed	None	Neighbouring	Save
46	Eastern White Cedar	Thuja occidentalis	16	CD	FG	2	Cut leader, not surveyed	None	Neighbouring	Save
47	Eastern White Cedar	Thuja occidentalis	11	CD	FG	1.5	Broken leader	None	Neighbouring	Save
48	Eastern White Cedar	Thuja occidentalis	12	CD	FG	1.5	Broken leader	None	Neighbouring	Save
49	Eastern White Cedar	Thuja occidentalis	35, 30, 30	CD	F	4.5	Asymmetrical crown, union at base, included bark	None	Neighbouring	Save
50	Eastern White Cedar	Thuja occidentalis	38, 20	CD	FP	5	Dead/broken branches, poor form, union at base	None	Neighbouring	Save
51	Norway Spruce	Picea abies	90	CD	FG	7	Treehouse in canopy, dead/broken branches, not surveyed	Minor grading within roof zone	Neighbouring	Save
52	Norway Maple	Acer platanoides	36	CD	FG	7.5	Slight lean east, asymmetrical crown	Conflict with proposed underground	Private	Remove
53	Eastern White Cedar	Thuja occidentalis	18	S	P	2	Slight lean west, asymmetrical crown, dead/broken branches	Conflict with proposed underground	Private	Remove
54	Eastern White Cedar	Thuja occidentalis	14	S	P	1	75% canopy dieback	Conflict with proposed underground	Private	Remove
55	Eastern White Cedar	Thuja occidentalis	19	S	P	2	Epicormic branches, dead/broken branches, asymmetrical crown	Conflict with proposed underground	Private	Remove
56	Eastern White Cedar	Thuja occidentalis	10	S	P	1	Dead/broken branches, epicormic branching	Conflict with proposed underground	Private	Remove
57	Eastern White Cedar	Thuja occidentalis	11	S	P	1	Asymmetrical crown, epicormic branching, dead/broken branches	Conflict with proposed underground	Private	Remove
58	Eastern White Cedar	Thuja occidentalis	15	S	FP	1	Asymmetrical crown, dead/broken branches	Conflict with proposed underground	Private	Remove
59	Eastern White Cedar	Thuja occidentalis	14	CD	F	2	Slight lean west, asymmetrical crown	Conflict with proposed underground	Private	Remove
60	Eastern White Cedar	Thuja occidentalis	12	S	FP	1.5	Included bark	Conflict with proposed underground	Private	Remove
61	Eastern White Cedar	Thuja occidentalis	13	CD	F	1	Included bark, asymmetrical crown, sparse crown	Conflict with proposed underground	Private	Remove
62	Eastern White Cedar	Thuja occidentalis	20	CD	F	1.5	Asymmetrical crown, sparse crown	Conflict with proposed underground	Private	Remove
63	Norway Maple	Acer platanoides	21	CD	FG	3.5	Slight lean east	Conflict with proposed underground	Private	Remove
64	Colorado Blue Spruce	Picea pungens	30	CD	FG	3	Dead/broken branches	Conflict with proposed underground	Private	Remove
65	Eastern White Cedar	Thuja occidentalis	19	CD	F	2.5	Corrected sweep, asymmetrical crown, broken leader	Conflict with proposed driveway	Private	Remove
66	Norway Maple	Acer platanoides	27	CD	FG	4	Grapevine competition in canopy, bar at base	Grading within root zone	Boundary	Remove
67	Black Walnut	Juglans nigra	23	D	G	5		Conflict with proposed driveway	R.O.W.	Remove
68	Siberian Elm	Ulmus pumila	38	D	F	5.5	Epicormic branching, gravel in root zone, previous pruning	Grading within root zone	R.O.W.	Remove
69	Siberian Elm	Ulmus pumila	58	D	FG	10.5	Dead/broken branches, gravel in root zone	Grading within root zone	R.O.W.	Remove
70	Red Pine	Pinus resinosa	32	D	FG	4	Dead/broken branches, asphalt in root zone	Conflict with proposed building	Private	Remove
71	Colorado Blue Spruce	Picea pungens	30	CD	G	3		Conflict with proposed building	Private	Remove
72	Japanese Maple	Acer palmatum	18, 17	CD	F	4.5	Unions at base, included bark, cavity at union, asymmetrical crown, not surveyed	Conflict with proposed building	Private	Remove
73	Colorado Blue Spruce	Picea pungens	30	CD	G	3		Conflict with proposed building	Private	Remove
74	Eastern White Cedar	Thuja occidentalis	10	D	FP	1.5	Asymmetrical crown, previous pruning	Conflict with proposed building	Private	Remove
75	Silver Maple	Acer saccharinum	96	D	FP	14	Dead/broken branches, asymmetrical crown, slight lean north	Conflict with proposed building	Private	Remove
76	Eastern White Cedar	Thuja occidentalis	12	CD	F	1.5	Slight lean east, epicormic branching, asymmetrical crown, not surveyed	Conflict with proposed building	Private	Remove
77	Colorado Blue Spruce	Picea pungens	48	CD	G	5	Asymmetrical crown	Conflict with proposed building	Private	Remove
78	Colorado Blue Spruce	Picea pungens	30	CD	FG	2.5	Epicormic branching, slight lean south	Conflict with proposed building	Private	Remove
79	Common Pear	Pyrus communis	37	D	FP	4.5	Lean south, wire through canopy, dead/broken branches, cavities up trunk	None	Private	Save

* CROWN CLASS
Dominant - (D) Emergent canopy (receives full sunlight)
Co-dominant - (C) Not fully emergent (top of canopy receives sunlight)
Intermediate - (I) Sub-canopy tree (receives partial sunlight)

** CONDITION - consideration of trunk integrity, crown structure and crown vigor
Good - few or no issues related to trunk integrity, crown structure or crown vigor
Fair - minor issues related to trunk integrity, crown structure (form, some dead or damaged branches) or crown vigor (20-60% healthy foliage)
Poor - issues with trunk integrity such as cavities or exposed dead wood, poor crown structure (poor form, no clear leader, significant dead or damaged branches) or poor crown vigor (<20% healthy foliage)

CONDITION OF TREES
The decision to remove or retain a tree is subject to the forecasted development impacts, the structural condition of the tree (e.g. cracks, cavities, decay, weak branching, leaning, hazard potential), the biological condition of the tree (e.g. pest or disease concerns, overall health) and the suitability of the tree in its location (e.g. hardness, soil conditions, salt tolerance, visual obstruction, available soil volume)

CHART LEGEND/CODES
DBH: Diameter at Breast Height (cm)
Trunk Integrity (TI): G = Good, F = Fair, P = Poor
Crown Structure (CS): G = Good, F = Fair, P = Poor
Crown Vigor (CV): G = Good, F = Fair, P = Poor
Crown Class: D = Dominant, CD = Codominant, I = Intermediate, S = Suppressed

NOTE:
Written permission from the neighbouring property owner is required prior to removal or injury of any boundary tree(shared ownership) or any tree that is not fully on the subject property.

MIGRATORY BIRDS AND NESTS:

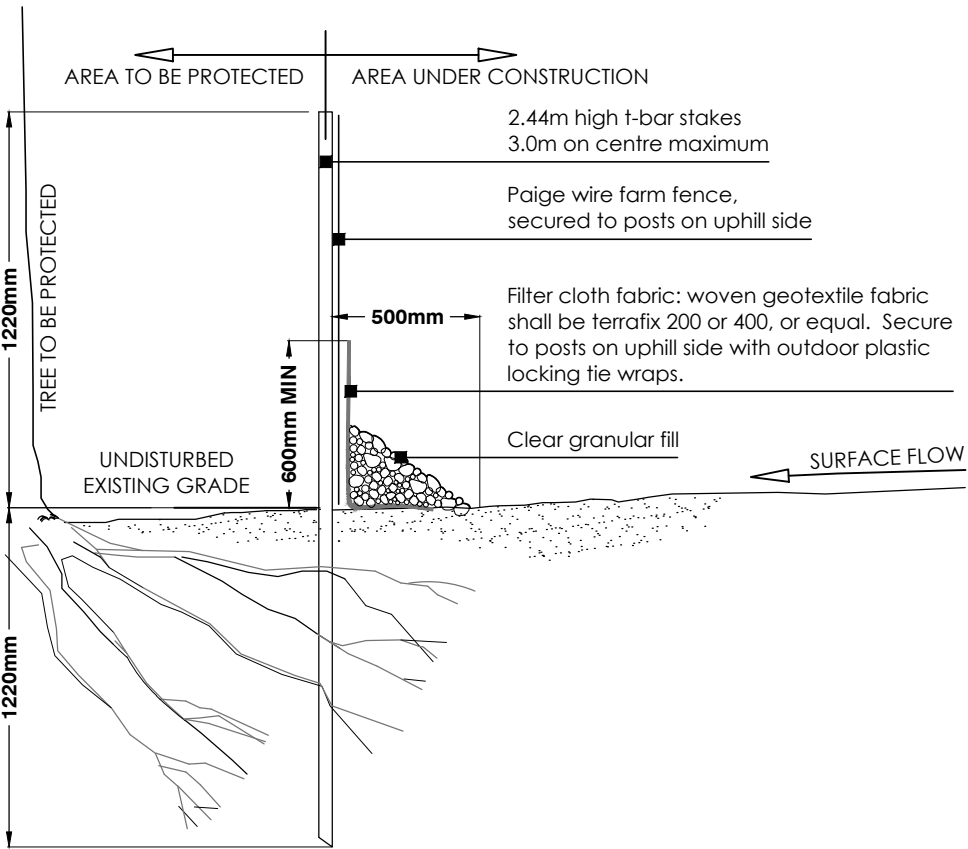
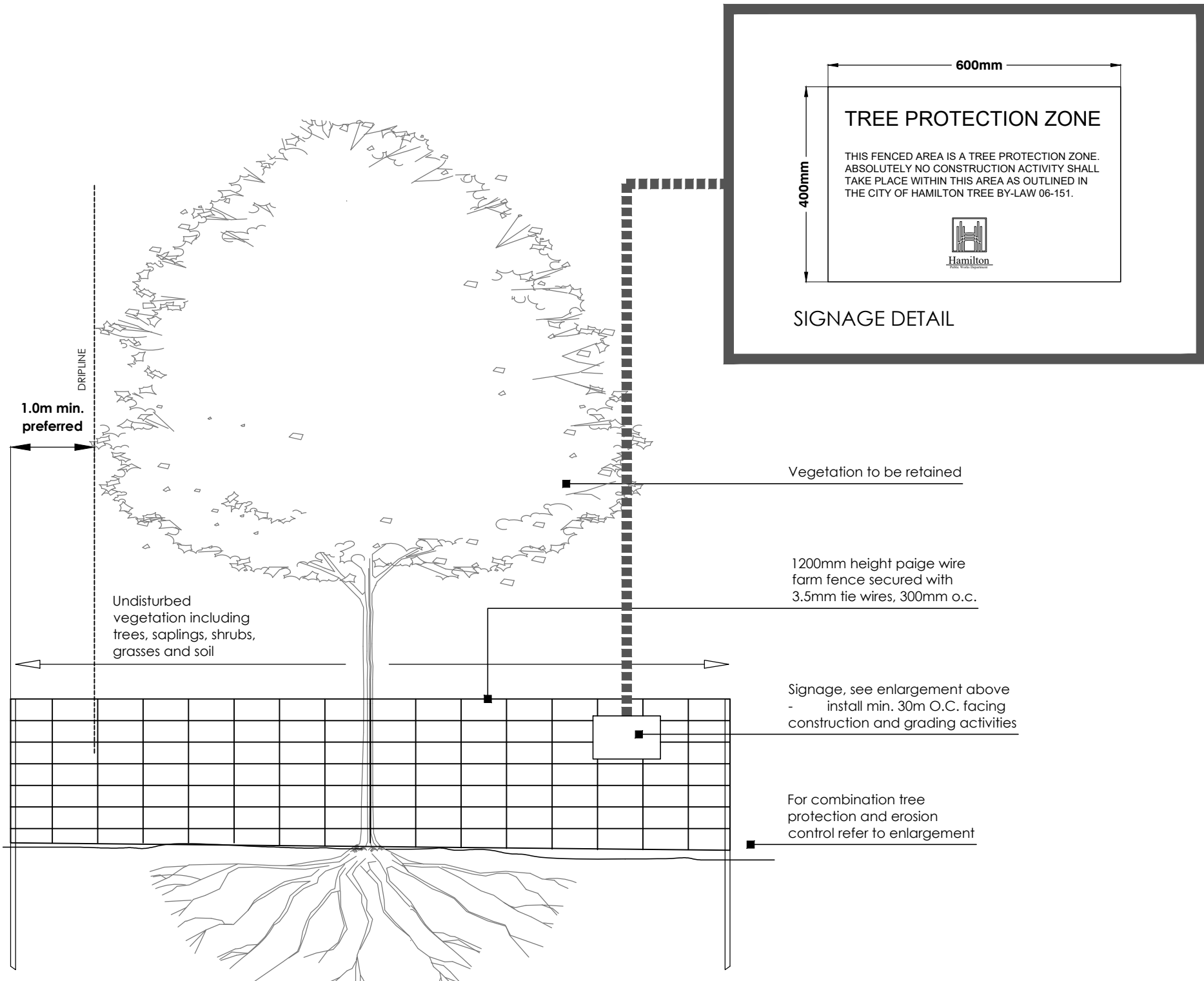
- The Owner and Contractor must be aware of the Migratory Birds Convention Act, 1994 - specifically:
 - No tree removal or construction activity shall contravene the Act.
 - Construction activities with the potential to harm migratory birds or their nest should be restricted from March 15 to August 31.
 - If work must occur during the migratory bird breeding season, a nest survey should be taken by a qualified avian biologist.
 - A mitigation plan (showing active nests and appropriate buffers) may be required for review and approval by the Canadian Wildlife Services.

TREE REMOVAL:

- No trees shall be removed prior to municipal approvals of the Tree Management/Tree Preservation Plan.

BOUNDARY TREES:

- Note that boundary trees are protected under the Ontario Forestry Act. Boundary trees are defined in the Forestry Act (Section 10.2) and are considered shared or co-owned property. The Forestry Act indicates that it is a prosecutable offense for one co-owner to injure or cut down a boundary tree without the other co-owner's permission.
- Written permission from the neighbouring property owner is required prior to removal or injury of any boundary tree(shared ownership) or any tree that is not fully on the subject property.
- An SA certified Arborist should be on site prior to any work being performed within the rootzone of a boundary or neighbouring tree to perform root pruning as required.



NOTES:

- The area within the dripline of all existing trees shall be properly protected with temporary fencing.
- The area within the protective fencing shall remain undisturbed with no construction activity, grade changes, surface treatment, compaction, or excavation. Area shall not be used for the storage of building materials or equipment access/storage or project related garbage.
- Tree protection measures shall be installed prior to any demolition, tree removal or construction and shall remain until the completion of fine grading and sodding or seeding.
- Prune all trees for dead, diseased, weak or hazardous branches only. Also trim back branches which will interfere with construction, prune for structural restoration where necessary.
- No stockpiles and/or excavated material shall be placed within the tree preservation area.
- No rigging cable shall be wrapped around or installed to trees.
- Where root systems of protected trees are exposed directly adjacent to or damaged by construction work they are to be root pruned and the area back filled with topsoil to prevent root desiccation. An Arborist is required to be on site for any injury or cutting to the root system or surface roots of a protected tree.
- Any fine grading within the preservation area is to be done by hand, no heavy equipment is permitted within the preservation zone.
- Sediment accumulations to be removed by subdivider/builder when sediment deposits reach within 150mm of top of filter fabric barrier.
- City of Hamilton Urban Forester to be contacted and a site visit to be coordinated between the City of Hamilton, the Developer and the qualified arborist performing tree service prior to any alteration of municipal trees.
- A copy of the approved and signed Vegetation Management Plan will be on site for the duration of construction and available upon request from the City of Hamilton Forestry & Horticulture representative.
- This detail does not represent any particular tree species.

NOT FOR CONSTRUCTION
ISSUED FOR REVIEW & COMMENTS ONLY

NOTE:
Vegetation inventory undertaken by Adesso Design Inc., on 2025-06-02.

REVISIONS/ SUBMISSIONS

#	DATE	DESCRIPTION
1	2025-06-12	Issued for review
2	2025-08-20	Issued for submission

STAMP



CLIENT
Royal Living Development Group
MUNICIPALITY
City of Hamilton

PROJECT
1694 Upper James Street
Hamilton, ON

MUNICIPAL FILE NUMBER

SHEET
Tree Protection Plan

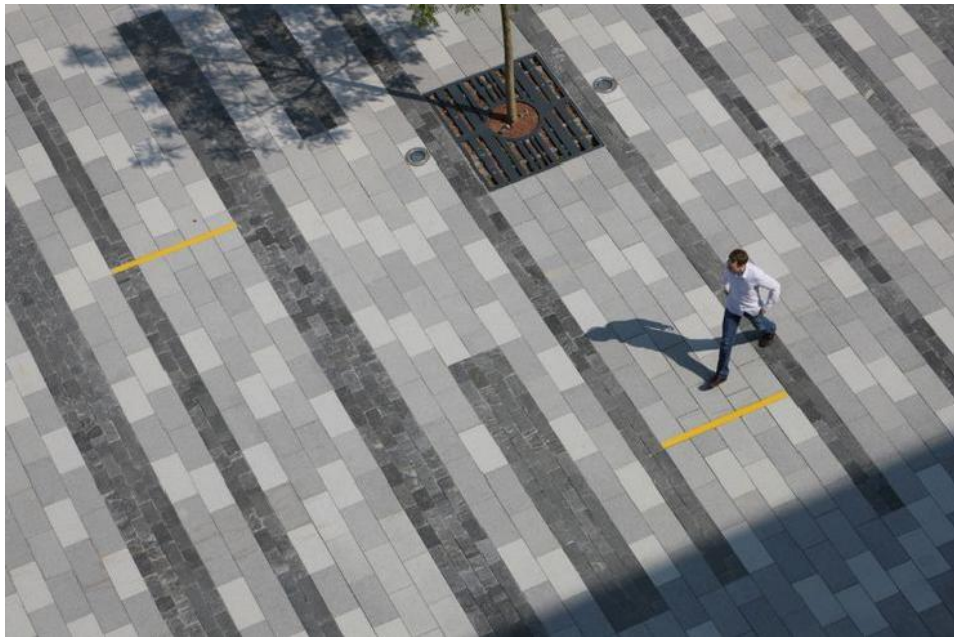
L-2

adesso design inc.
landscape architecture



69 John Street South, Suite 250
Hamilton, ON L8N 2B9
t. 905.526.8876
www.adessodesigninc.ca

CONCEPT



LINEAR PAVING PATTERN WITH BANDING



WOODEN BENCHES



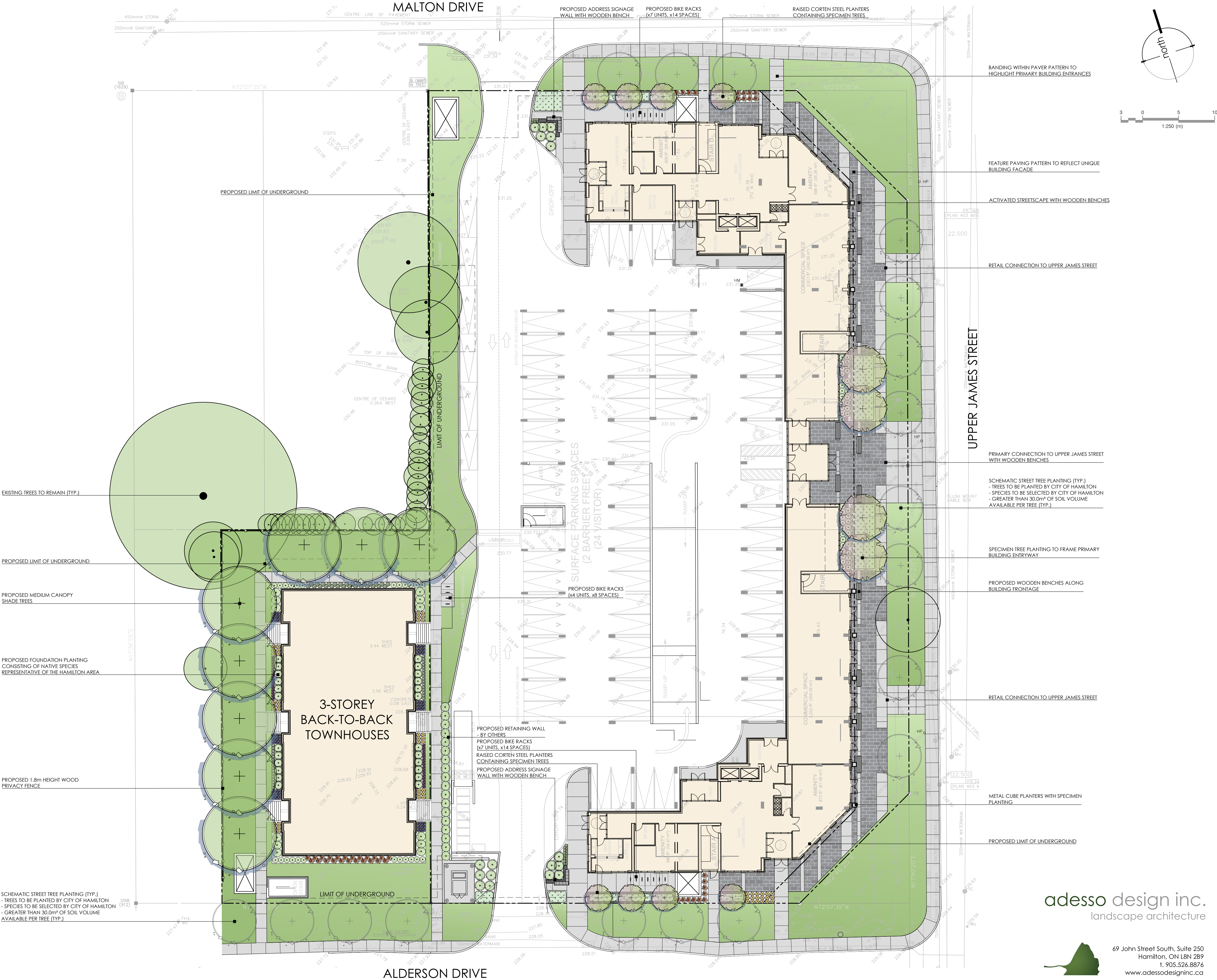
MONUMENT ADDRESS SIGNAGE WITH INTEGRATED SEATING



RAISED CORTEN STEEL PLANTERS

1694 UPPER JAMES STREET &
18 ALDERSON DRIVE
CITY OF HAMILTON

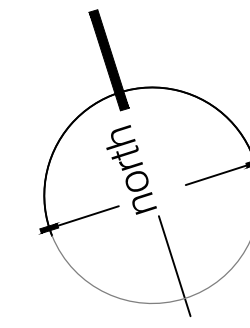
DATE (08/20/2025)



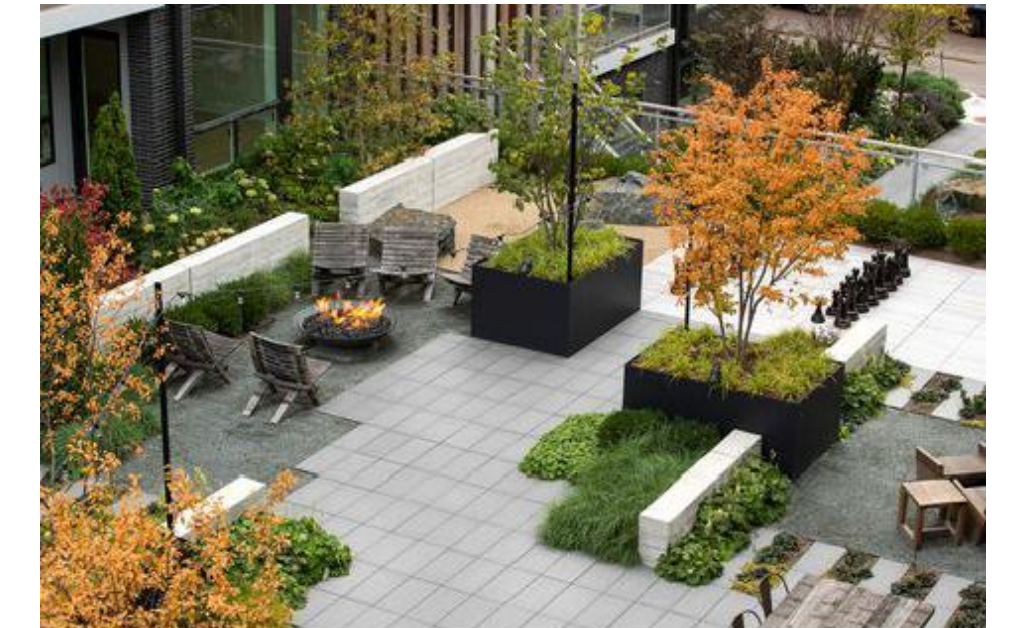
CENTRAL GATHERING AREA WITH COLOURFUL/FLEXIBLE SEATING ELEMENTS

A scenic view of a lakeside patio. The patio is constructed from large, flat, grey stones and features a circular stone fire pit in the center. Several wooden Adirondack chairs are arranged around the fire pit. The patio is bordered by a dense forest of tall evergreen trees on the left and a calm lake on the right. The sky is clear and blue.

DATE (08/20/2025)



PROPOSED CORTEN STEEL CUBE PLANTERS
CONTAINING SMALL FLOWERING TREES



ARTIFICIAL TURF AREAS