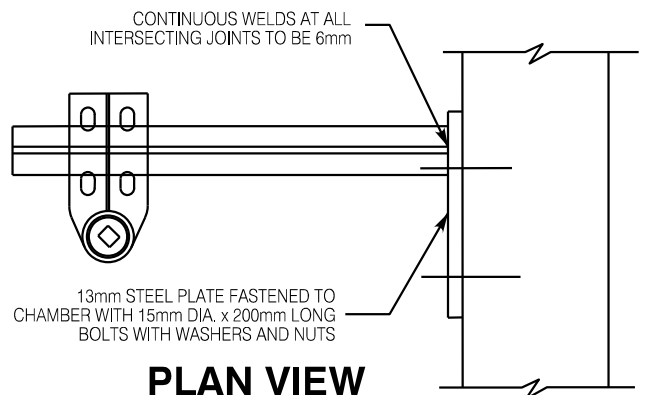
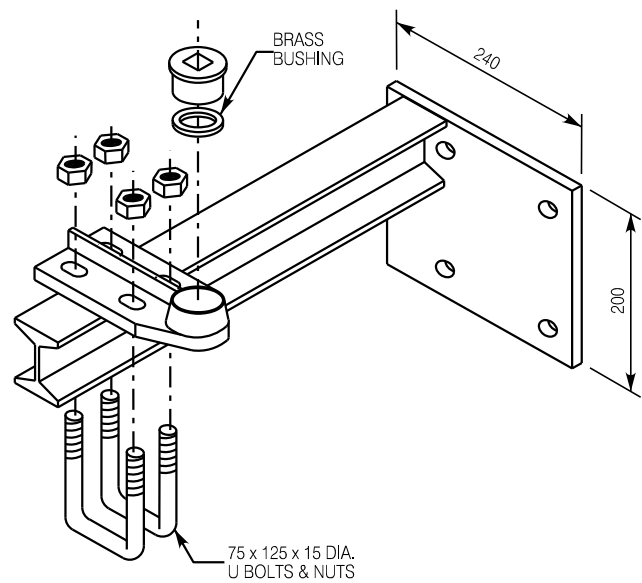
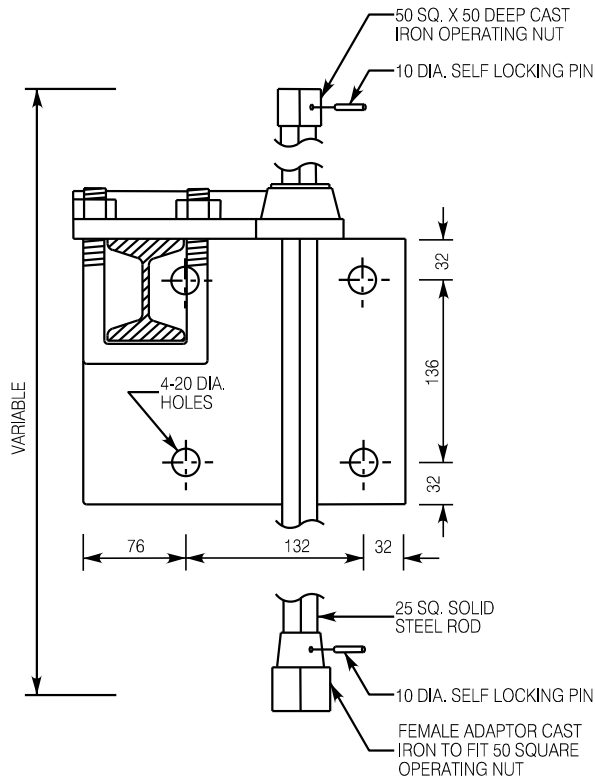


ELEVATION



PLAN VIEW

NOTES:

1. STEM EXTENSIONS, BRACKET COMPONENTS AND FASTENERS SHALL BE STAINLESS STEEL
2. WELDING SHALL CONFORM TO W47.1 AND CSA W59

City of Hamilton
Public Works Department

VALVE STEM EXTENSION SUPPORT BRACKET

DIMENSIONS SHOWN ARE IN MILLIMETRES
UNLESS OTHERWISE NOTED (N.T.S.)

DATE
June 2025

REV No
1

FORMERLY:

HAMILTON STD No

WM-215.04