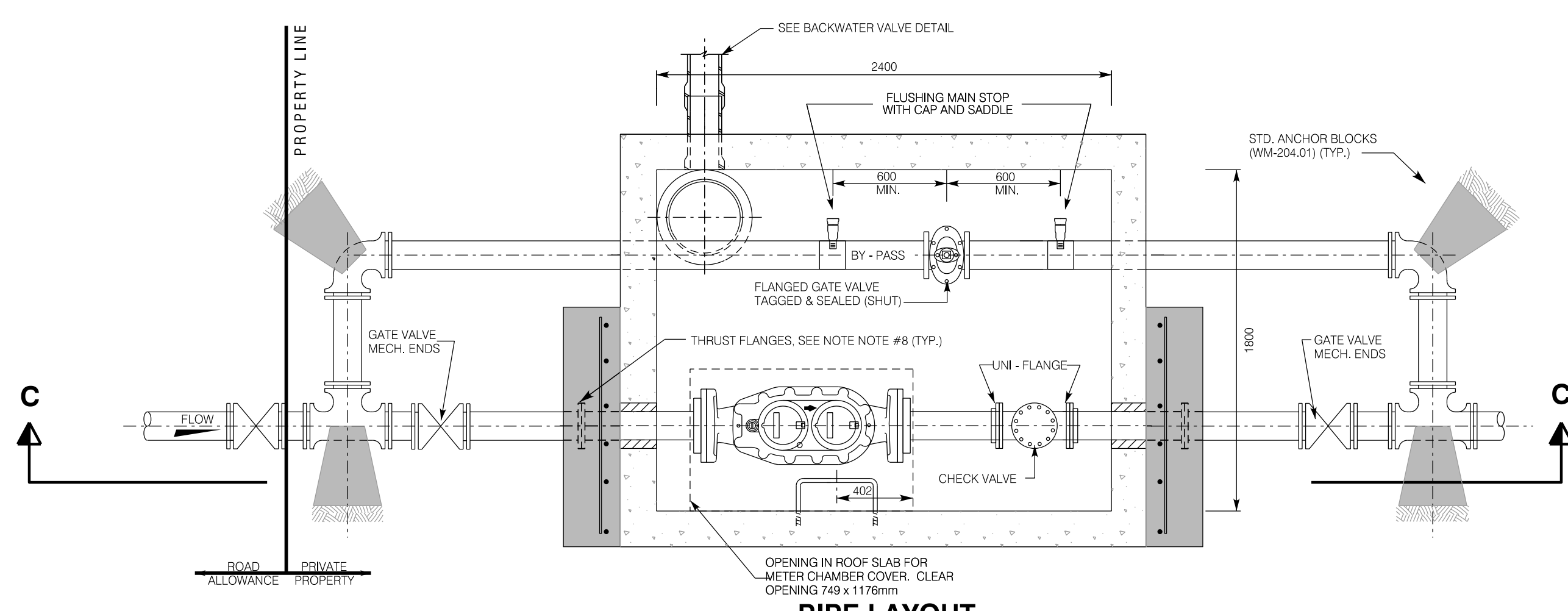
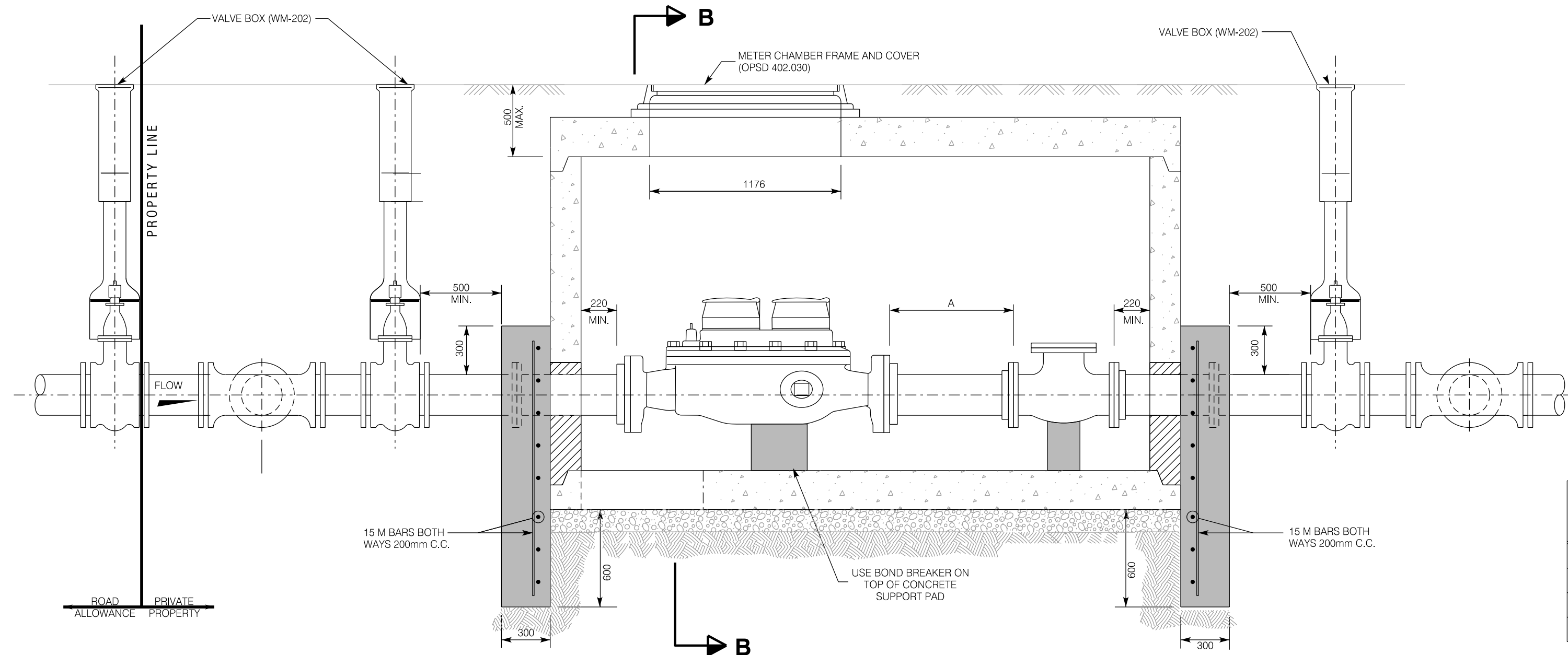


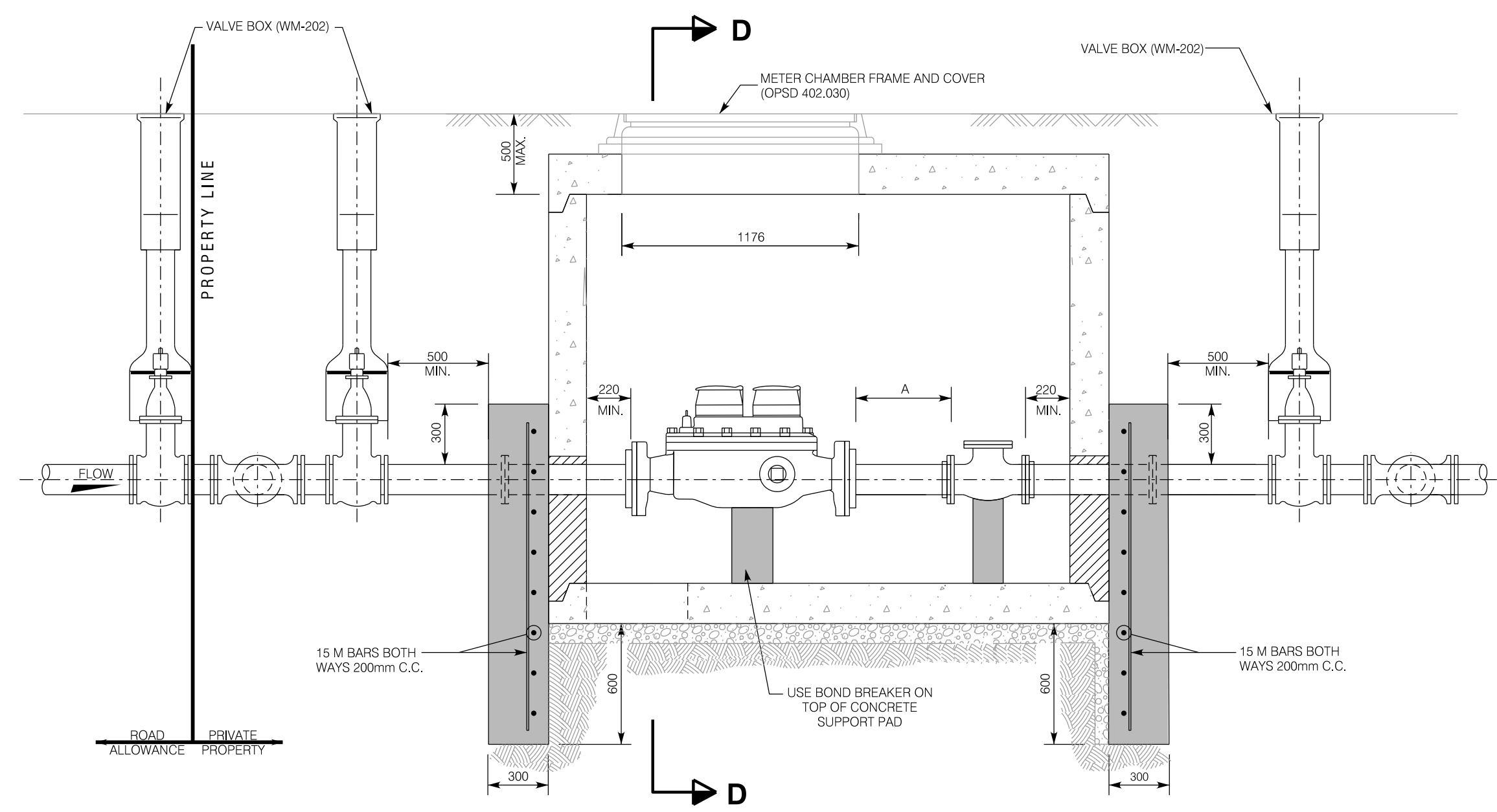
PIPE LAYOUT
 METER CHAMBER FOR 200mm & 250mm DIA. WATER METER



PIPE LAYOUT
 METER CHAMBER FOR 100mm & 150mm DIA. WATER METER

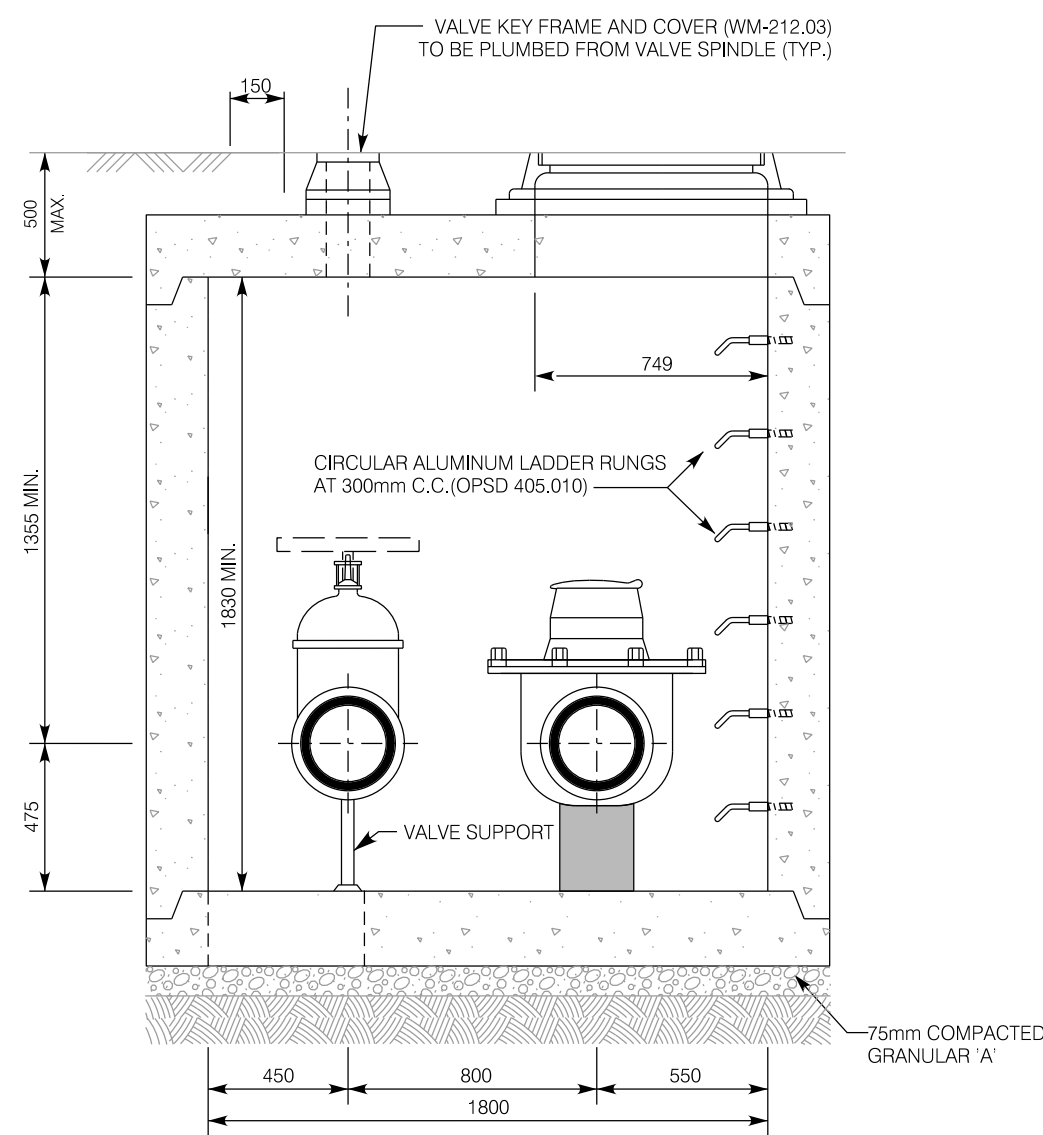


SECTION A-A
 200mm & 250mm DIA. WATER METER

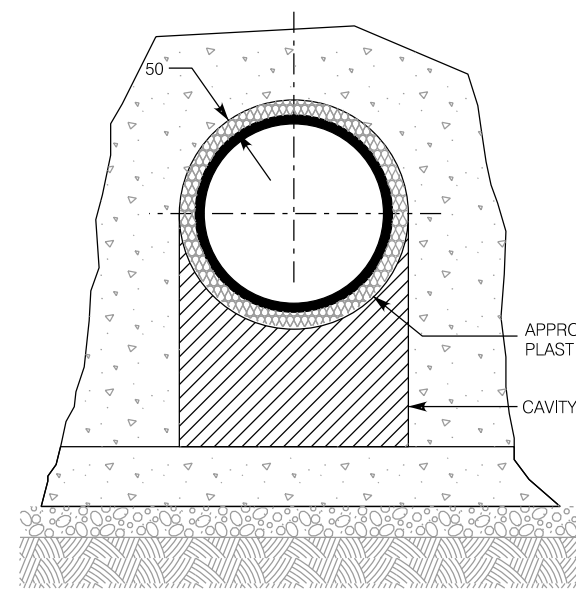


SECTION C-C
 100mm & 150mm DIA. WATER METER

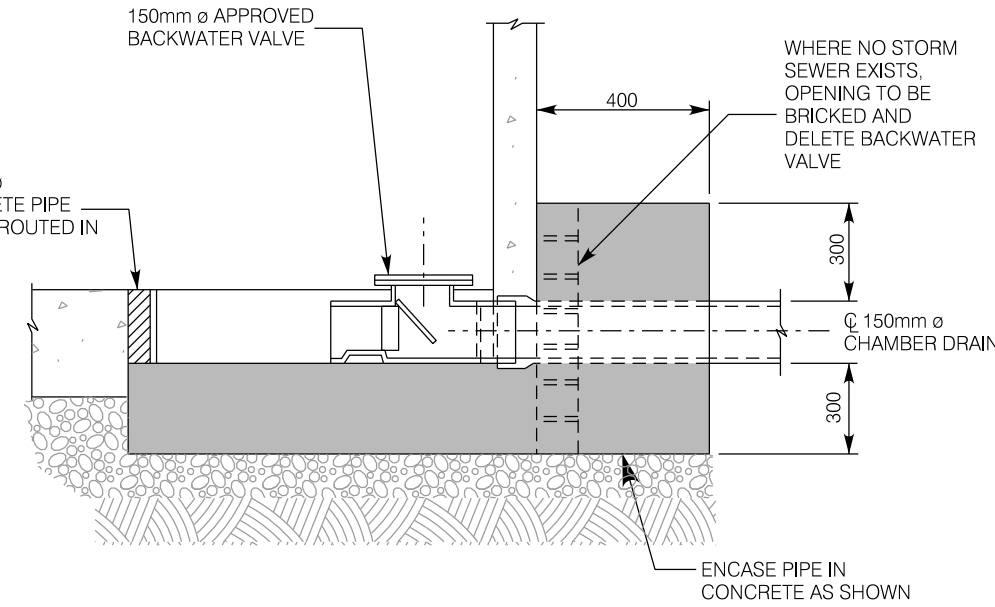
METER SIZE	CHAMBER LENGTH (mm)
200mm METER	3000
250mm METER	3500



SECTION B-B
 200mm & 250mm DIA. WATER METER



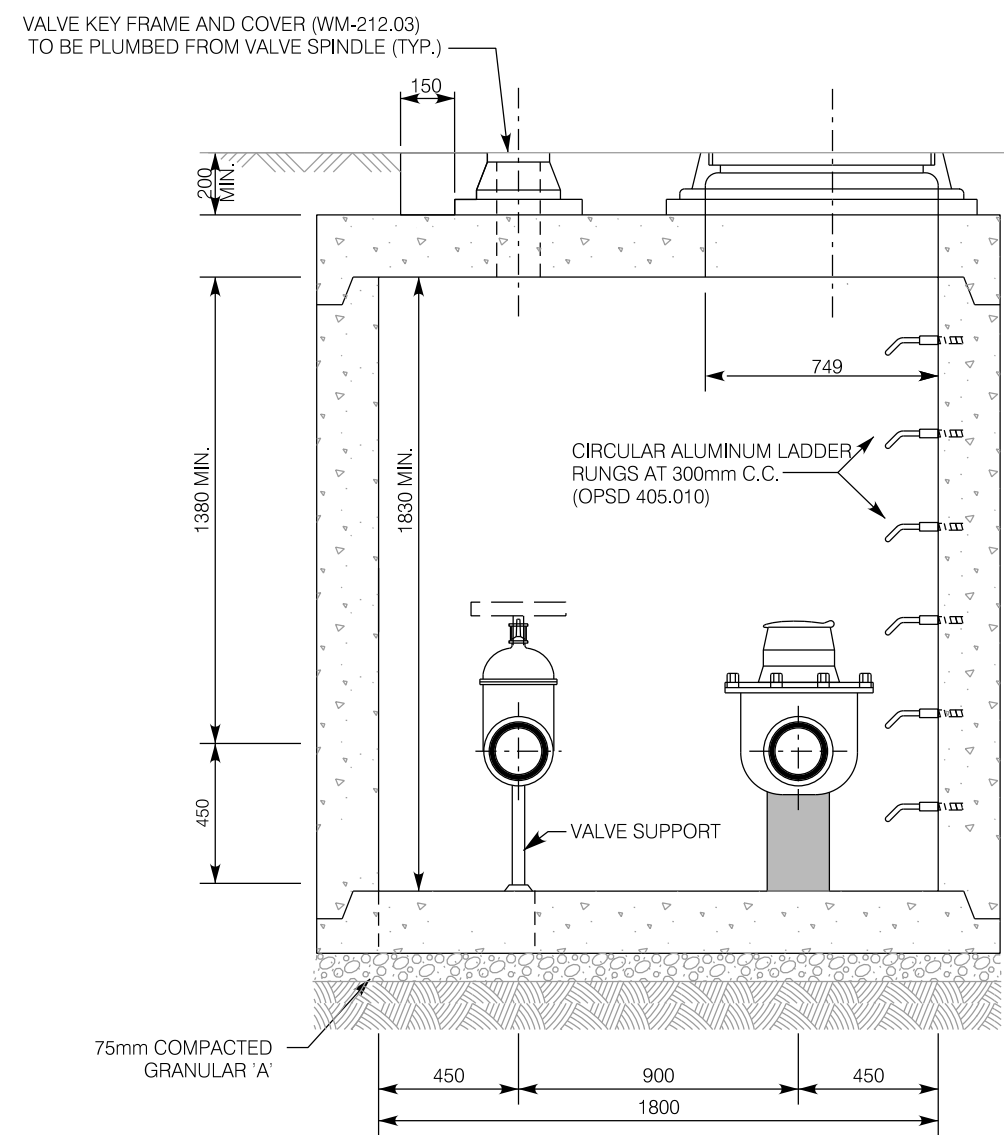
DOGHOUSE DETAIL



BACKWATER VALVE DETAIL

- NOTES:
1. PRECAST SECTIONS TO BE MANUFACTURED TO ASTM C-478 AND CSA SPECIFICATIONS.
 2. FILL ALL JOINTS AND LIFTING HOLES (INSIDE & OUT) 15mm THICK WITH 1:3 NON-SHRINK MORTAR MIX.
 3. ALL ADJUSTMENTS TO CHAMBER AND KEY BOX COVERS SHALL BE MADE WITH POURED CONCRETE.
 4. ALL CONCRETE TO BE 40 MPa, STRENGTH, TYPE 50 CEMENT.
 5. ALL REINFORCING TO BE HIGH BOND STRUCTURAL GRADE.
 6. DOGHOUSE OPENING TO BE MIN. 50mm LARGER THAN O.D. OF PROPOSED WATERMAIN. PIPE TO BE WRAPPED WITH MIN. 50mm THICK OF APPROVED PLAST MASTIC MATERIAL. REMAINING CAVITY TO BE GROUTED. (SEE DOGHOUSE DETAIL).
 7. ALL FLANGES SHALL BE IN ACCORDANCE WITH ANSI / AWWA C 115 / A 21.15 DRILLED TO USAS STANDARD B 16.1, CLASS 125.
 8. ALL METAL COMPONENTS INSIDE CHAMBERS, INCLUDING STAINLESS STEEL NUTS AND BOLTS, SHALL HAVE A PROTECTIVE CORROSION TAPE COATING SYSTEM (PRIMER, MASTIC AND TAPE). PROTECTIVE CORROSION TAPE COATING (PRIMER, MASTIC AND TAPE) IS NOT REQUIRED ON VALVE OR HYDRANT BODIES.
 9. WALL THICKNESS FOR PRECAST CHAMBER SHALL BE 200mm MIN. CAP & BASE TO BE 250mm MIN.

COMPACT GRANULAR	PRECAST CONCRETE	POURED IN PLACE CONCRETE	GROUT
------------------	------------------	--------------------------	-------



SECTION D-D
 100mm & 150mm DIA. WATER METER

City of Hamilton Public Works Department			
PIPING AND CHAMBER FOR MULTI-UNIT RESIDENTIAL 100mm TO 250mm DIA. METER INSTALLATION (1800mm x 2400mm/3000mm/3500mm PRECAST METER CHAMBERS)			
DIMENSIONS SHOWN ARE IN MILLIMETERS UNLESS OTHERWISE NOTED (N.T.S.)	DATE: DRAFT JUNE 2019	REV NO: FORMERLY WM-234	HAMILTON STD NO: WM-234.01