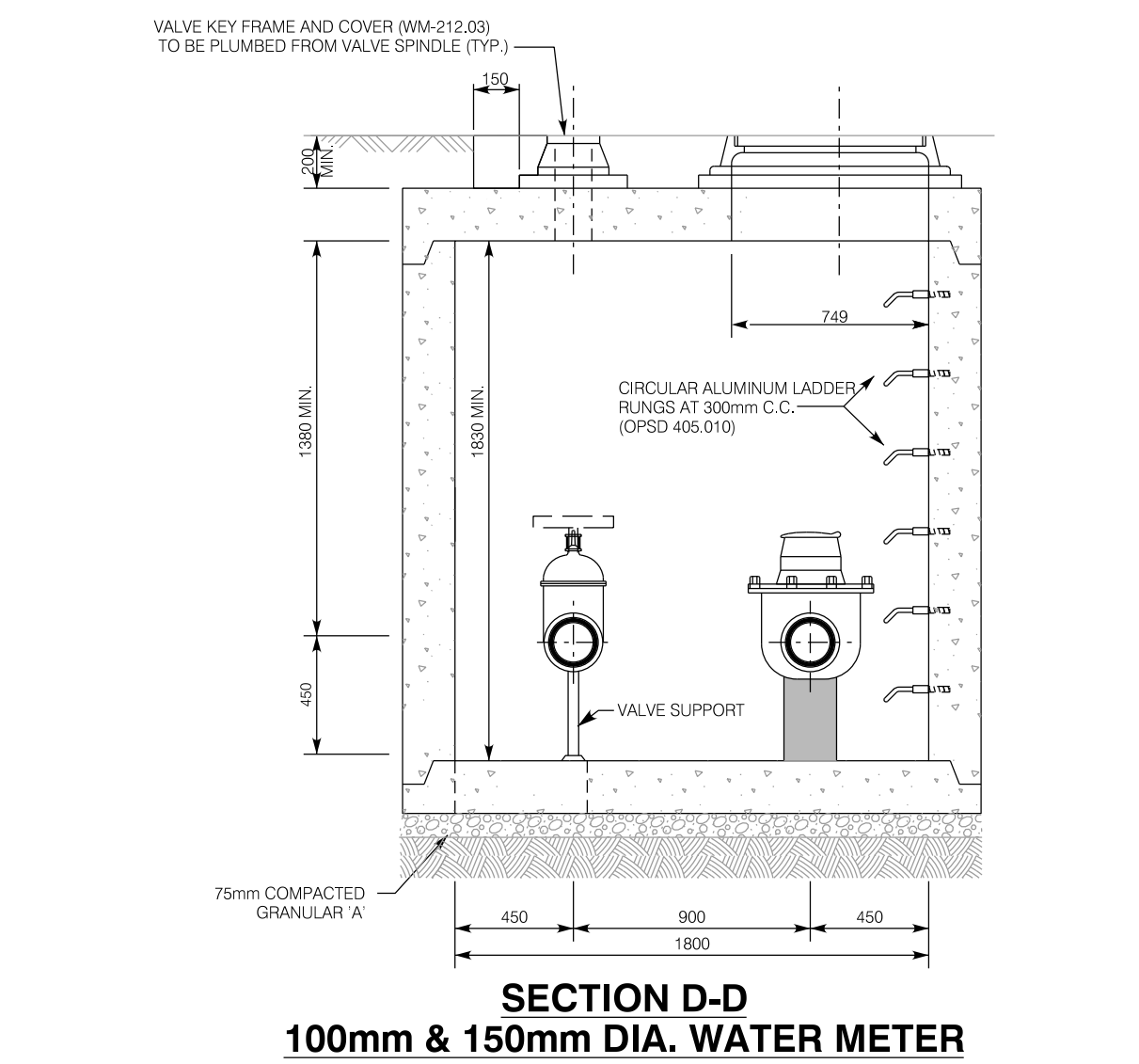


- NOTES:
1. PRECAST SECTIONS TO BE MANUFACTURED TO ASTM C-478 AND CSA SPECIFICATIONS.
  2. FILL ALL JOINTS AND LIFTING HOLES (INSIDE & OUT) 15mm THICK WITH 1:3 NON-SHRINK MORTAR MIX.
  3. ALL ADJUSTMENTS TO CHAMBER AND KEY BOX COVERS SHALL BE MADE WITH POURED CONCRETE.
  4. ALL CONCRETE TO BE 40 MPa STRENGTH, TYPE 50 CEMENT.
  5. ALL REINFORCING TO BE HIGH BOND STRUCTURAL GRADE.
  6. DOGHOUSE OPENING TO BE MIN. 50mm LARGER THAN C.O.D. OF PROPOSED WATERMAIN. PIPE TO BE WRAPPED WITH MIN. 50mm THICK OF APPROVED PLAST MASTIC MATERIAL. REMAINING CAVITY TO BE GROUTED. (SEE DOGHOUSE DETAIL).
  7. ALL METAL COMPONENTS INSIDE CHAMBERS, INCLUDING STAINLESS STEEL NUTS AND BOLTS, SHALL HAVE A PROTECTIVE CORROSION TAPE COATING SYSTEM (PRIMER, MASTIC AND TAPE). PROTECTIVE CORROSION TAPE COATING (PRIMER, MASTIC AND TAPE) IS NOT REQUIRED ON VALVE OR HYDRANT BODIES.
  8. FASTEN INSULATION TO CEILING WITH 50mm DIA. WASHERS (GALVANIZED) & 6mm DIA. TAPCON CONCRETE ANCHORS @ 450mm CENTRES.
  9. WALL THICKNESS FOR PRECAST CHAMBER SHALL BE 200mm MIN. CAP & BASE TO BE 250mm MIN.
  10. APPLICABLE BACKFLOW PREVENTION ASSEMBLY TO BE PLACED NO MORE THAN 3.0m DOWNSTREAM OF THE METER/BY-PASS ASSEMBLY.
  11. FOR HEATING INCLOSURE INSTALLATION REFER TO BY LAW B64.10-11.



City of Hamilton Public Works Department			
PIPING AND CHAMBER FOR ICI, HIGH HAZARD 100mm TO 250mm DIA. METER INSTALLATION (1800mm x 2400mm AND 1800mm x 3000mm PRECAST METER CHAMBERS)			
DIMENSIONS SHOWN ARE IN MILLIMETERS UNLESS OTHERWISE NOTED (N.T.S.)	DATE: DRAFT JUNE 2019	REV NO: FORMERLY WM-234	HAMILTON STD NO: WM-234.03