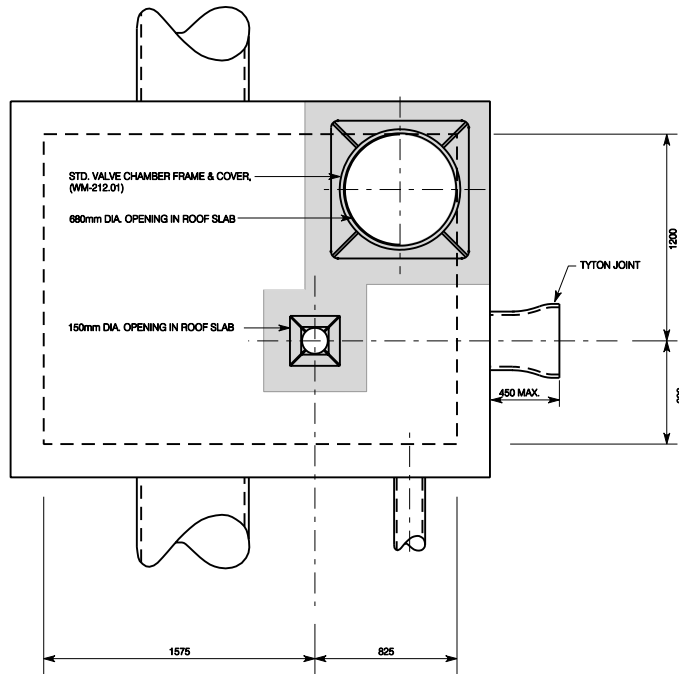
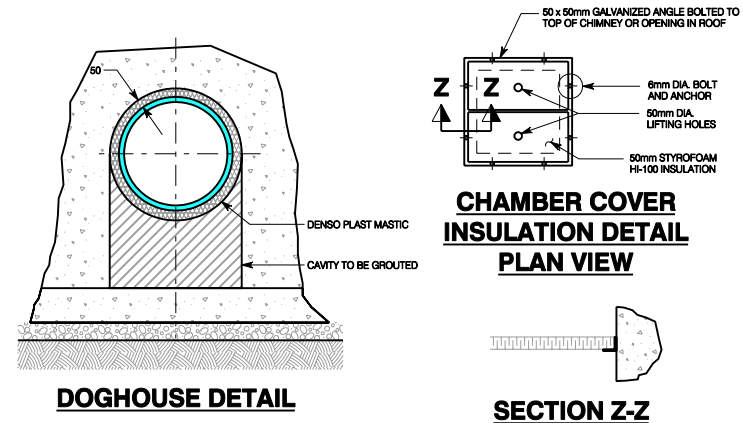


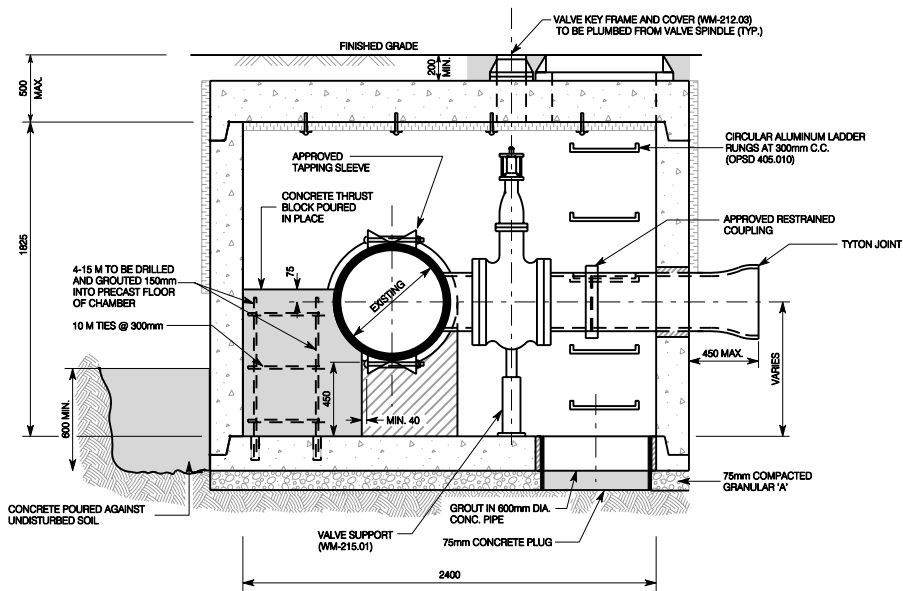
PIPE LAYOUT



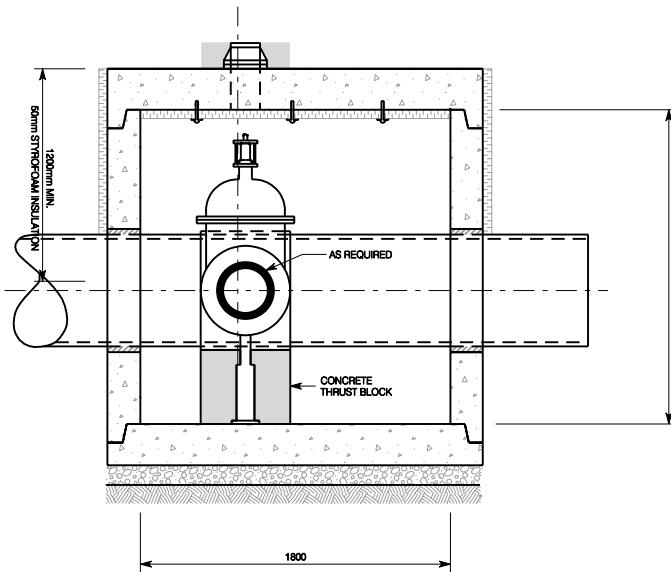
ROOF PLAN



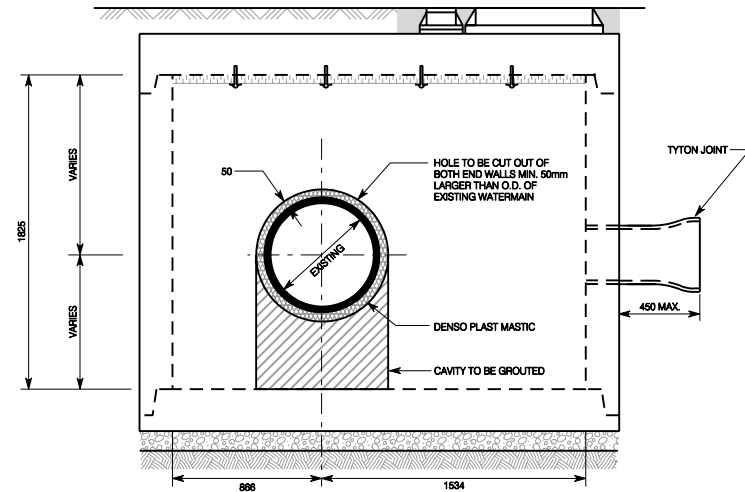
SECTION Z-Z



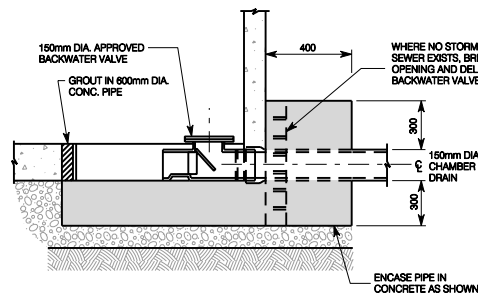
SECTION A-A



SECTION B-B



WALL ELEVATION



BACKWATER VALVE DETAIL

- NOTES:
1. PRECAST SECTIONS TO BE MANUFACTURED TO ASTM C-478 AND CSA SPECIFICATIONS.
  2. FILL ALL JOINTS AND LIFTING HOLES (INSIDE & OUT) 15mm THICK WITH 1:3 NON-SHRINK MORTAR MIX.
  3. ALL ADJUSTMENTS TO CHAMBER AND KEY COVERS SHALL BE MADE WITH POURED CONCRETE.
  4. ALL CONCRETE TO BE 30 MPa, TYPE 60 CEMENT.
  5. ALL REINFORCING TO BE HIGH BOND STRUCTURAL GRADE.
  6. FASTEN INSULATION TO CEILING WITH 50mm DIA. WASHERS (GALVANIZED) & 6mm DIA. TAPCON CONCRETE ANCHORS @ 450mm CENTRES.
  7. DOGHOUSE OPENING TO BE CUT OUT MIN. 50mm (LARGER THAN O.D. OF PROPOSED WATERMAIN. PIPE TO BE WRAPPED WITH MIN. 50mm THICK OF DENSO PLAST MASTIC. REMAINING CAVITY TO BE GROUTED. (SEE DOGHOUSE DETAIL).
  8. ALL FLANGES TO BE IN ACCORDANCE WITH ANSI / AWWA.
  9. SUPPLY AND APPLY DENSO CORROSION PROTECTION AS SPECIFIED, TO ALL STEEL, CAST OR DUCTILE IRON SURFACES, SADDLES, (INCLUDING BALES) VALVES, FLANGES, NUTS AND BOLTS, ETC.
  10. CHAMBER PIPING TO BE CLASS 64 FOR DUCTILE IRON.
  11. WALL THICKNESS FOR PRECAST CHAMBER SHALL BE 200mm MIN. CAP & BASE TO BE 250mm MIN.

PRECAST CONCRETE    POURED IN PLACE CONCRETE    GROUT

City of Hamilton  
Public Works Department

1800 x 2400mm PRECAST TAPPING VALVE CHAMBER FOR 100mm DIA. D.I.  
TAPPING OFF 400mm TO 600mm DIA. WATERMAIN

DIMENSIONS SHOWN ARE IN MILLIMETRES UNLESS OTHERWISE NOTED (N.T.S.) DATE: November 2005 REV No: FORMERLY: RWS-303 HAMILTON STD No: WM-235