

Appendix J:

Composite Utility Plan

SUPPLEMENTAL LEGEND:

- EXISTING R.O.W.

PROPOSED 36m R.O.W.

PROPOSED GRADING

HYDRO AERIAL
- HYDRO UNDERGROUND

COMMUNICATION UNDERGROUND

COMMUNICATION AERIAL
- WATERMAIN

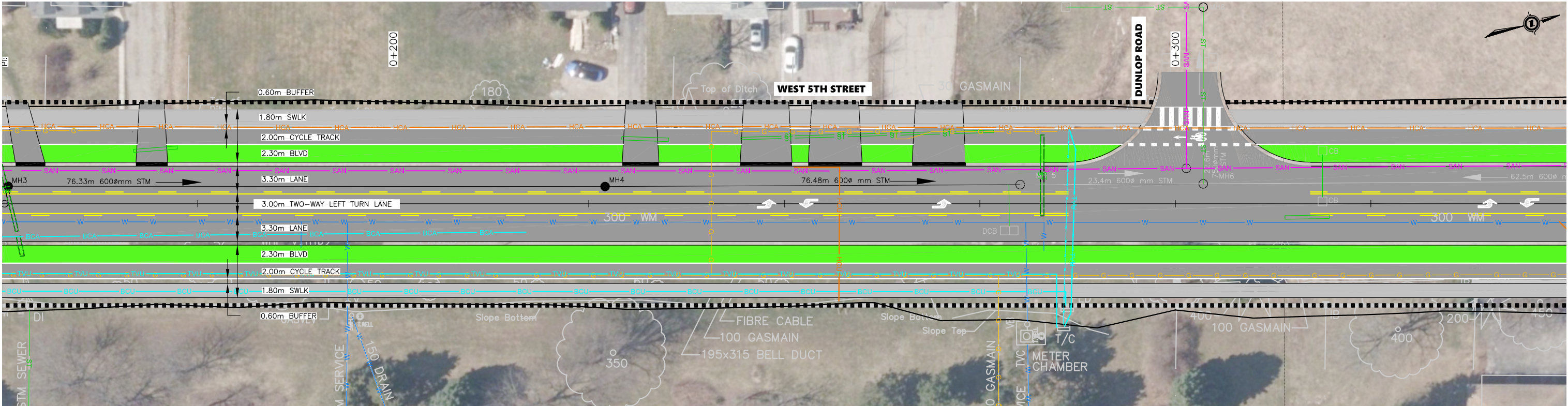
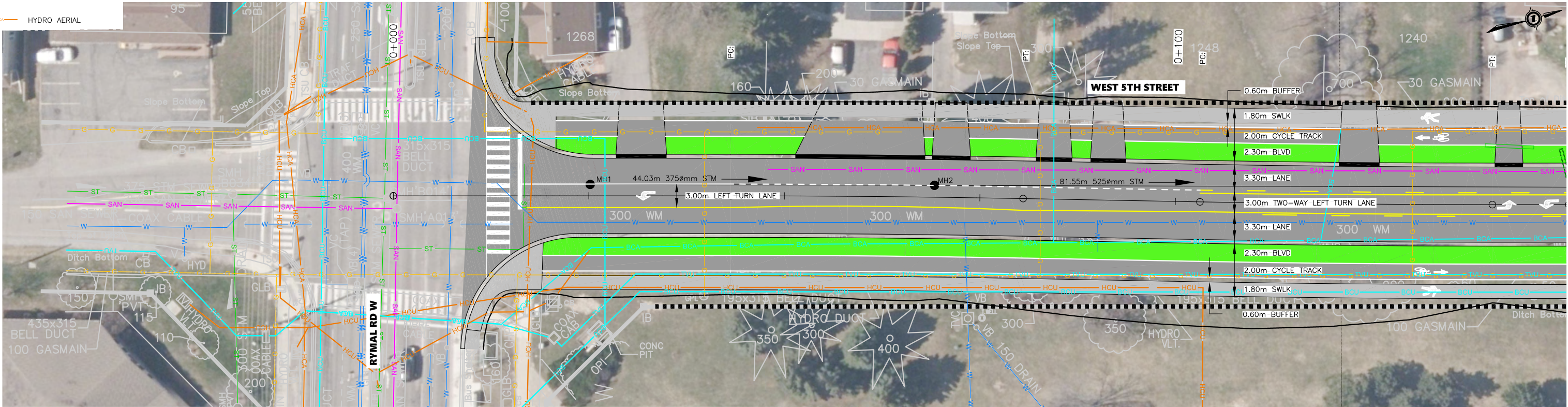
STORM SEWER

SANITARY SEWER
- BELL UNDERGROUND

BELL AERIAL

UNDERGROUND GAS
- PROPOSED ROADWAY/CYCLE TRACK

PROPOSED SIDEWALK



EXISTING SERVICES	DRAWING #, SOURCE	DATE	CONSTRUCTED SERVICES	COMPLETION	DETAILS	No.	REVISIONS	DATE	CONSULTANT
					DESIGN	MK			
					DRAWN BY	MK			
					CHECKED	IB			
					APPROVED	IB			
					DATE	AUGUST 2025			
						165001381			

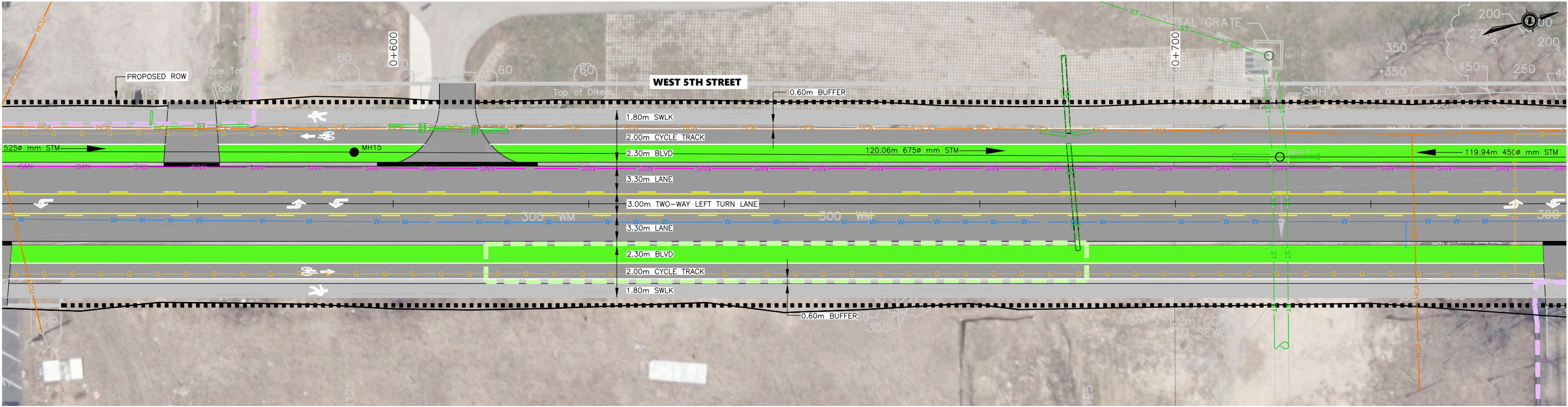
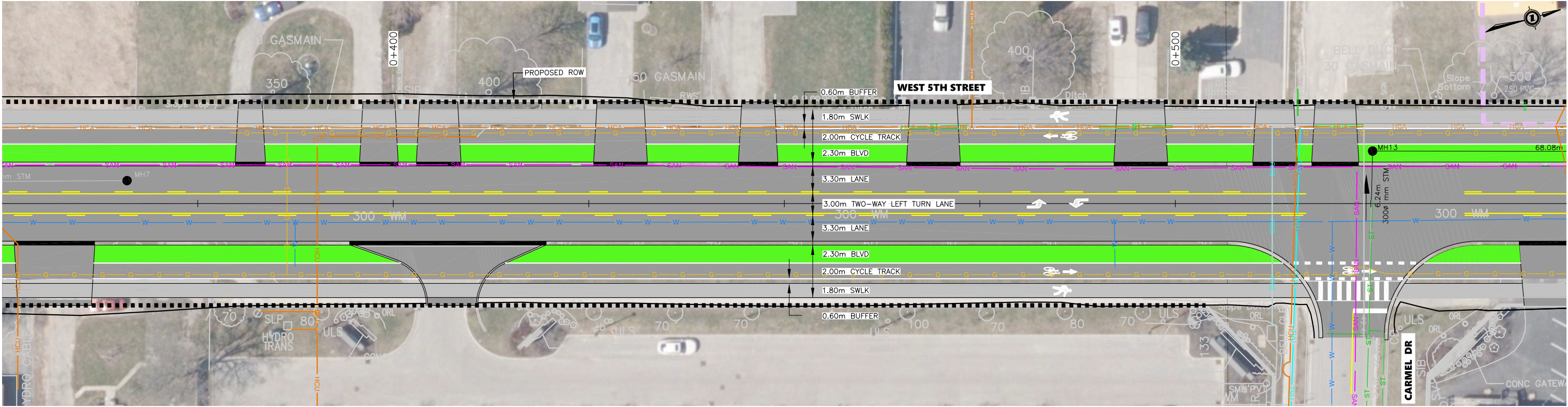
CONSULTANT OR DIVISION

Stantec Consulting Ltd.
1305 Riverbend Road #400
London ON Canada
N6K 0J5
Tel. 519.645.2007
Fax. 519.645.6575
www.stantec.com

ENGINEER'S STAMP

Hamilton

SCALE	TITLE	PROJECT No.
	WEST 5TH STREET EA	
	WEST 5TH STREET COMPOSITE UTILITY PLAN	SHEET No. 01
		PLAN FILE No.



EXISTING SERVICES	DRAWING #, SOURCE	DATE	CONSTRUCTED SERVICES	COMPLETION	DETAILS	No.	REVISIONS	DATE	CONSULTANT	CONSULTANT OR DIVISION	ENGINEER'S STAMP	SCALE	TITLE	PROJECT No.
					DESIGN	MK				<div><div>Stantec Consulting Ltd. 1305 Riverbend Road #400 London ON Canada N6K 0J5 Tel. 519.645.2007 Fax. 519.645.6575 www.stantec.com</div></div>	<div></div>	WEST 5TH STREET EA	02	
					DRAWN BY	MK								
					CHECKED	IB								
					APPROVED	IB								
					DATE	AUGUST 2025								
						165001381							WEST 5TH STREET COMPOSITE UTILITY PLAN	PLAN FILE No.

SUPPLEMENTAL LEGEND:

- EXISTING R.O.W.

PROPOSED 36m R.O.W.

PROPOSED GRADING

HYDRO UNDERGROUND

COMMUNICATION UNDERGROUND

COMMUNICATION AERIAL

HYDRO AERIAL

WATERMAIN

STORM SEWER

SANITARY SEWER

BELL UNDERGROUND

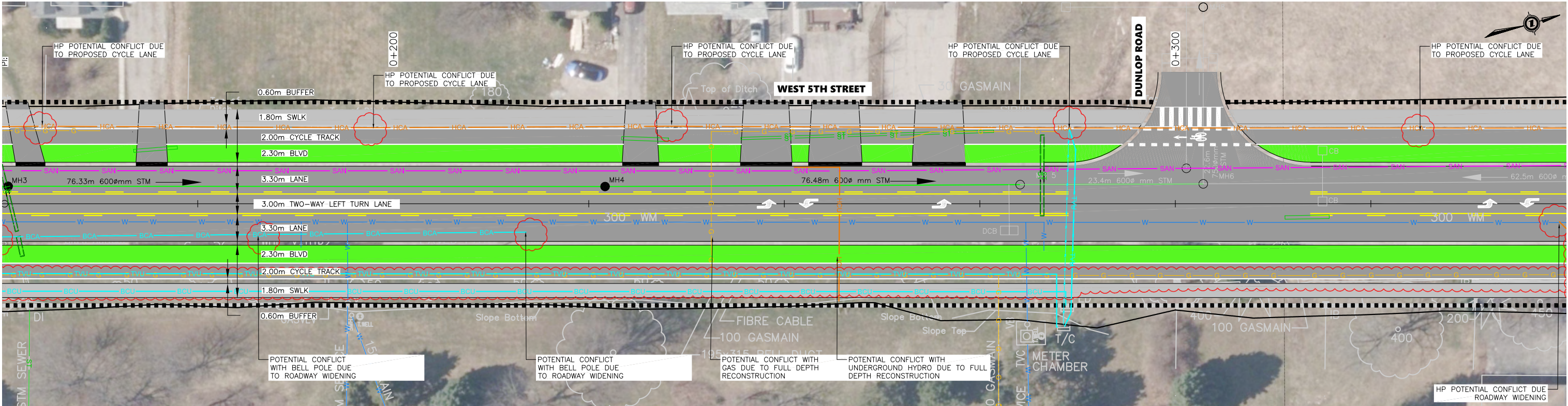
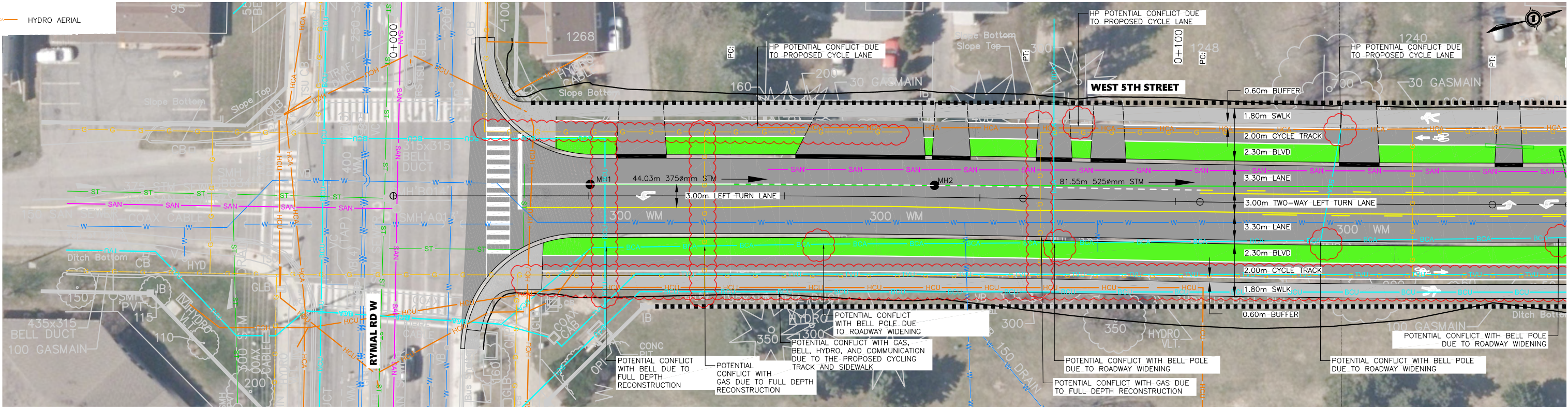
BELL AERIAL

UNDERGROUND GAS

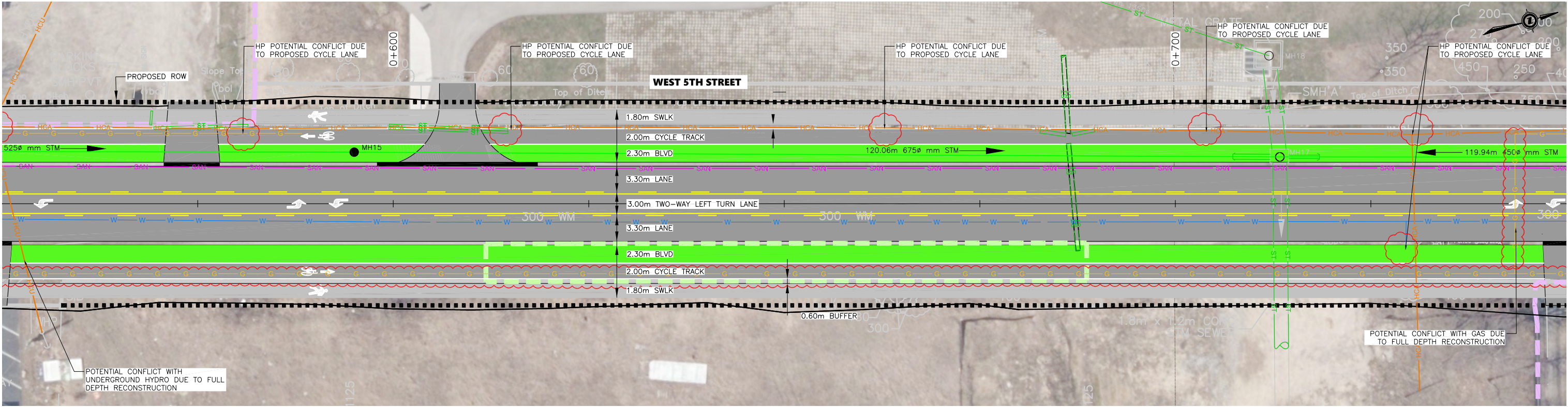
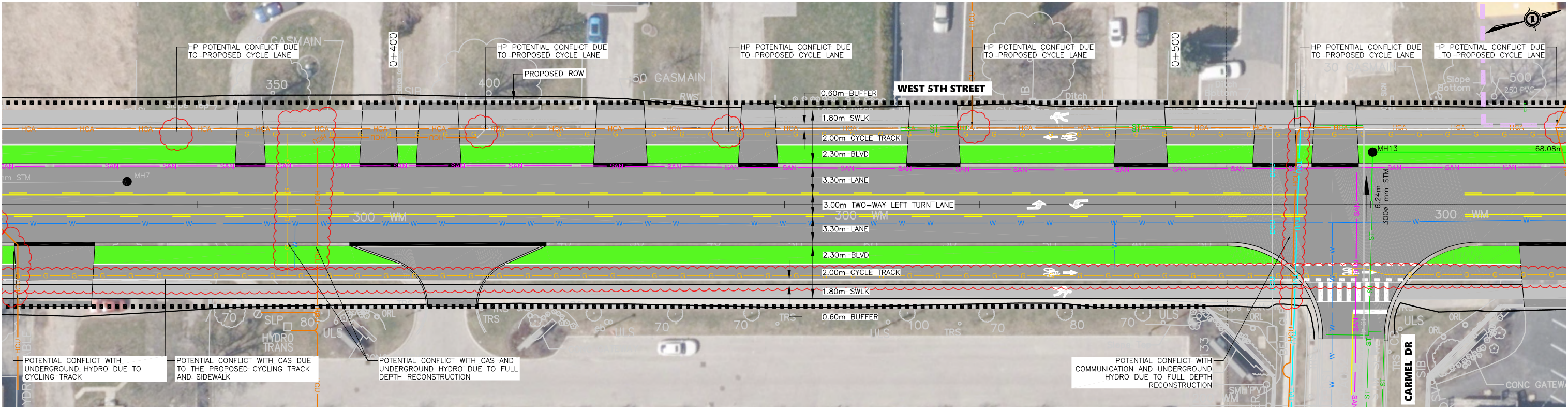
POTENTIAL CONFLICT

PROPOSED ROADWAY/CYCLE TRACK

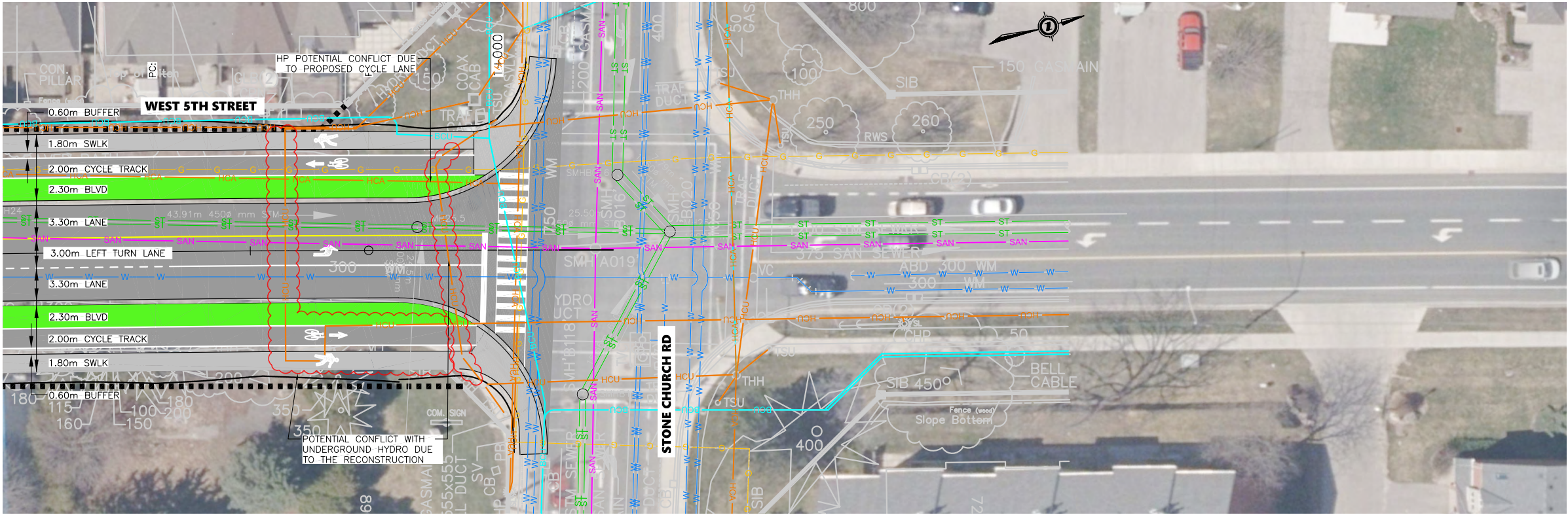
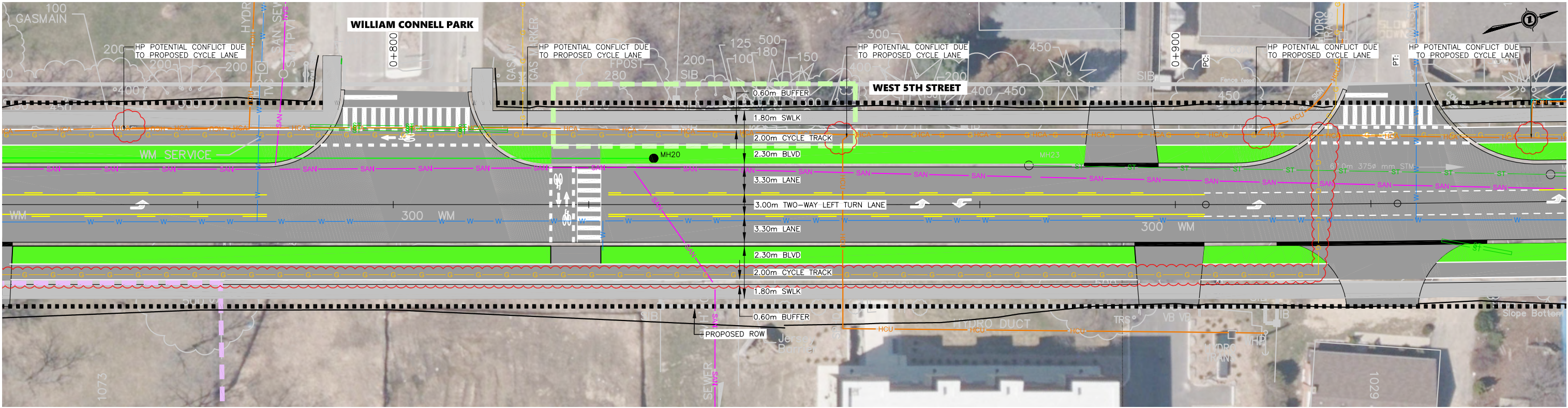
PROPOSED SIDEWALK



EXISTING SERVICES	DRAWING #, SOURCE	DATE	CONSTRUCTED SERVICES	COMPLETION	DETAILS	No.	REVISIONS	DATE	CONSULTANT	CONSULTANT OR DIVISION	ENGINEER'S STAMP	SCALE	TITLE	PROJECT No.
					DESIGN	MK				Stantec Consulting Ltd.			WEST 5TH STREET EA	
					DRAWN BY	MK				1305 Riverbend Road #400			WEST 5TH STREET	SHEET No.
					CHECKED	DE				London ON Canada			UTILITY CONFLICT PLAN	01
					APPROVED	IB				N6K 0J5				PLAN FILE No.
					DATE	AUGUST 2025				Tel. 519.645.2007				
										Fax. 519.645.6575				
										www.stantec.com				
						165001381								



EXISTING SERVICES	DRAWING #, SOURCE	DATE	CONSTRUCTED SERVICES	COMPLETION	DETAILS	No.	REVISIONS	DATE	CONSULTANT	CONSULTANT OR DIVISION	ENGINEER'S STAMP	SCALE	TITLE	PROJECT No.
					DESIGN MK					Stantec Consulting Ltd.			WEST 5TH STREET EA	
					DRAWN BY MK					1305 Riverbend Road #400			WEST 5TH STREET	SHEET No.
					CHECKED DE					London ON Canada			UTILITY CONFLICT PLAN	02
					APPROVED IB					N6K 0J5				PLAN FILE No.
					DATE AUGUST 2025					Tel. 519.645.2007				
										Fax. 519.645.6575				
										www.stantec.com				
						165001381								



EXISTING SERVICES	DRAWING #, SOURCE	DATE	CONSTRUCTED SERVICES	COMPLETION	DETAILS	No.	REVISIONS	DATE	CONSULTANT	CONSULTANT OR DIVISION	ENGINEER'S STAMP	SCALE	TITLE	PROJECT No.
		11/20/2023			DESIGN	1				Stantec Consulting Ltd.			WEST 5TH STREET EA	
					DRAWN BY	2				1305 Riverbend Road #400			WEST 5TH STREET	03
					CHECKED	3				London ON Canada			UTILITY CONFLICT PLAN	
					APPROVED	4				N6K 0J5				
					DATE	5				Tel. 519.645.2007				
						6				Fax. 519.645.6575				
						7				www.stantec.com				
						8								
						9								
						10								
						11								
						12								
						13								
						14								
						15								
						16								
						17								
						18								
						19								
						20								
						21								
						22								
						23								
						24								
						25								
						26								
						27								
						28								
						29								
						30								
						31								
						32								
						33								
						34								
						35								
						36								
						37								
						38								
						39								
						40								
						41								
						42								
						43								
						44								
						45								
						46								
						47								
						48								
						49								
						50								
						51								
						52								
						53								
						54								
						55								
						56								
						57								
						58								
						59								
						60								
						61								
						62								
						63								
						64								
						65								
						66								
						67								
						68								
						69								
						70								
						71								
						72								
						73								
						74								
						75								
						76								
						77								
						78								
						79								
						80								
						81								
						82								
						83								
						84								
						85								
						86								
						87								
						88								
						89								
						90								
						91								
						92								
						93								
						94								
						95								
						96								
						97								
						98								
						99								
						100								
						101								
						102								
						103								
						104								
						105								
						106								
						107								
						108								
						109								
						110								
						111								
						112								
						113								
						114								
						115								
						116								
						117								
						118								
						119								
						120								
						121								
						122								
						123								
						124								
						125								
						126								
						127								
						128								
						129								
						130								
						131								
						132								
						133								
						134								
						135								
						136								
						137								
						138								
						139								
						140								
						141								
						142								
						143								
						144								
						145								
						146								
						147								
						148								
						149								
						150								
						151								
						152								
						153								
						154								
						155								
						156								
						157								
						158								
						159								
						160								
						161								
						162								
						163								
						164								
						165								
						166								
						167								
						168								
						169								
						170								
						171								
						172								
						173								
						174								
						175								
						176								
						177								