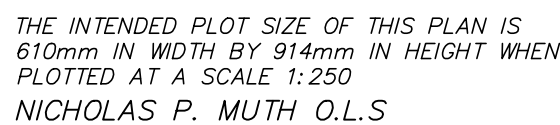
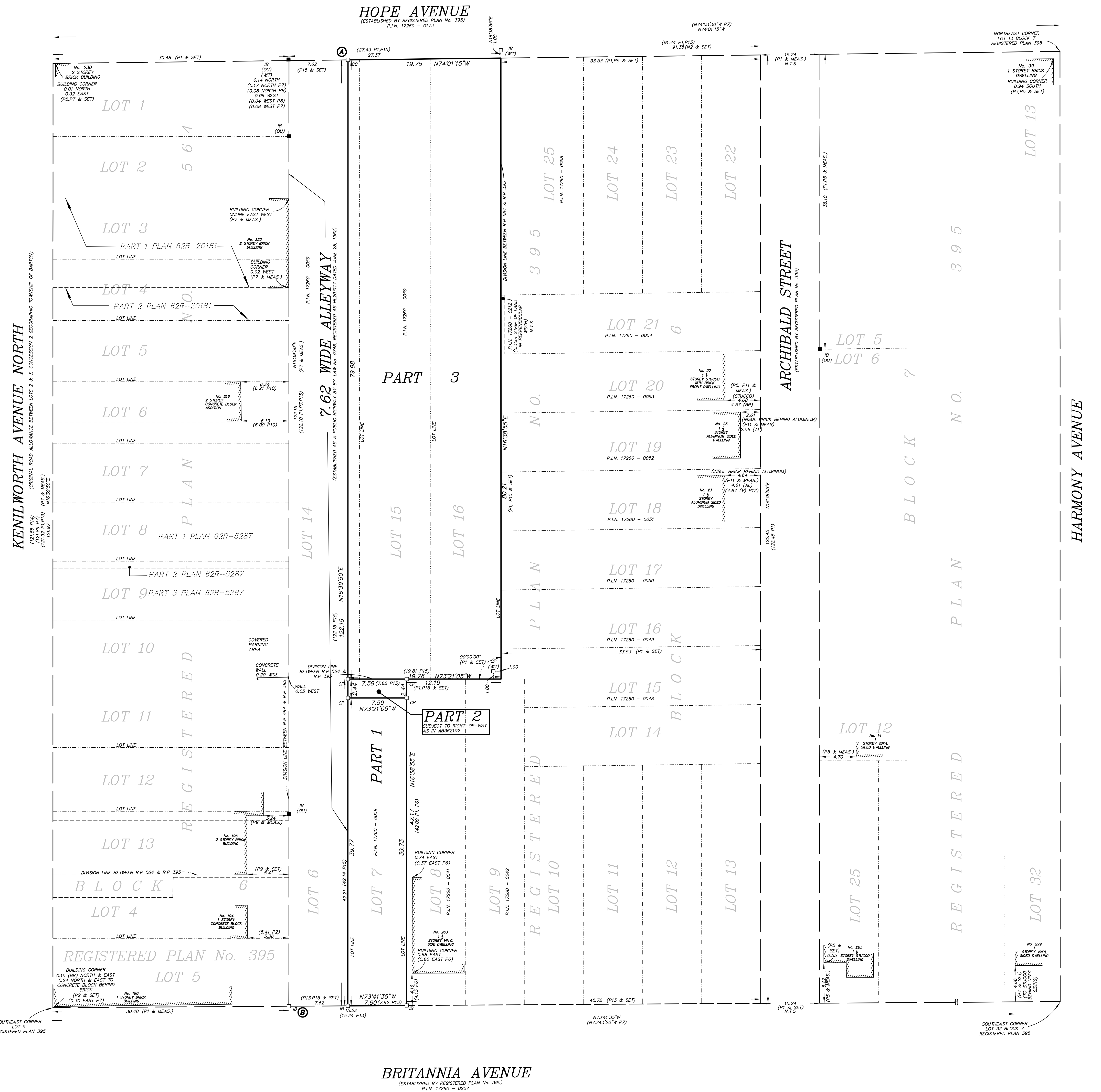


THE INTENDED PLOT SIZE OF THIS PLAN IS  
610mm IN WIDTH BY 914mm IN HEIGHT WHEN  
PLOTTED AT A SCALE 1:250  
NICHOLAS P. MUTH O.L.S



PART 2 IS SUBJECT TO A RIGHT-OF-WAY AS IN AB362102  
PARTS 1, 2 & 3 COMPRISE PART OF P.I.N 17260-0059



NOTE:  
BUILDING MEASUREMENT TIES TAKEN TO FOUNDATION UNLESS NOTED OTHERWISE  
METRIC:  
DISTANCES & COORDINATES SHOWN ON THIS PLAN ARE IN METRES AND  
CAN BE CONVERTED TO FEET BY DIVIDING BY 0.3048

DISTANCES ARE GROUND AND CAN BE CONVERTED TO GRID BY MULTIPLYING BY THE COMBINED SCALE FACTOR OF 0.999707

OBSERVED REFERENCE POINTS: UTM ZONE 17, NAD83 (CSRS)(2010) COORDINATES TO URBAN ACCURACY PER SEC. 14 (2) OF O.REG. 216/10		
POINT ID	NORTHING	EASTING
(A)	4788933.790	596890.596
(B)	4788818.906	596848.246

FOR BEARING COMPARISON A ROTATION OF 02°27'35" COUNTERCLOCKWISE WAS APPLIED TO PLANS P1, P2, P4, P5, P6 P8, P11, P12, P13, P14 TO CONVERT TO GRID BEARINGS.

**SURVEYOR'S CERTIFICATE:**

I CERTIFY THAT:

1. THE SURVEY AND PLAN ARE CORRECT AND IN ACCORDANCE WITH THE SURVEY ACT, THE SURVEYORS ACT, LAND TITLES ACT AND THE REGULATIONS MADE UNDER THEM.


2. THE SURVEY WAS COMPLETED ON the 31st day of OCTOBER, 2024

\_\_\_\_\_  
DATE

\_\_\_\_\_  
NICHOLAS P. MUTH  
ONTARIO LAND SURVEYOR

THIS PLAN OF SURVEY RELATES TO AOLS PLAN SUBMISSION FORM NUMBER  
V=-----

---

 **A. J. Clarke and Associates Ltd.**

**SURVEYORS • PLANNERS • ENGINEERS**

25 MAIN STREET WEST, SUITE 300  
HAMILTON, ONTARIO, L8P 1H1  
TEL. 905-528-8761 FAX 905-528-2289  
email: [ajc@ajclarke.com](mailto:ajc@ajclarke.com)