

**LEGEND**

- Study Area
- Additional Lands (Unsurveyed)
- Subject Property
- Drainage Feature <sup>1</sup>

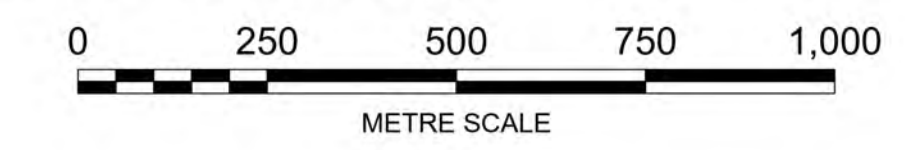
**Subwatersheds**

- Hannon Creek
- Sinkhole Creek
- Stoney Creek
- Upper Davis Creek
- West Twenty Mile Creek
- East Twenty Mile Creek



<sup>1</sup> - Watercourses as labelled by Geohub Ontario mapping. Subject to refinement following field studies

**NOTE: The information contained within this figure is preliminary and will be refined during further study.**



North American Datum 1983  
 Universal Transverse Mercator Projection Zone 17  
 Scale: 1:10,000  
 Page Size: ANSI D (22 x 34 inches)

Drawn: SM  
 Checked: DJ  
 Date: Apr 14, 2026

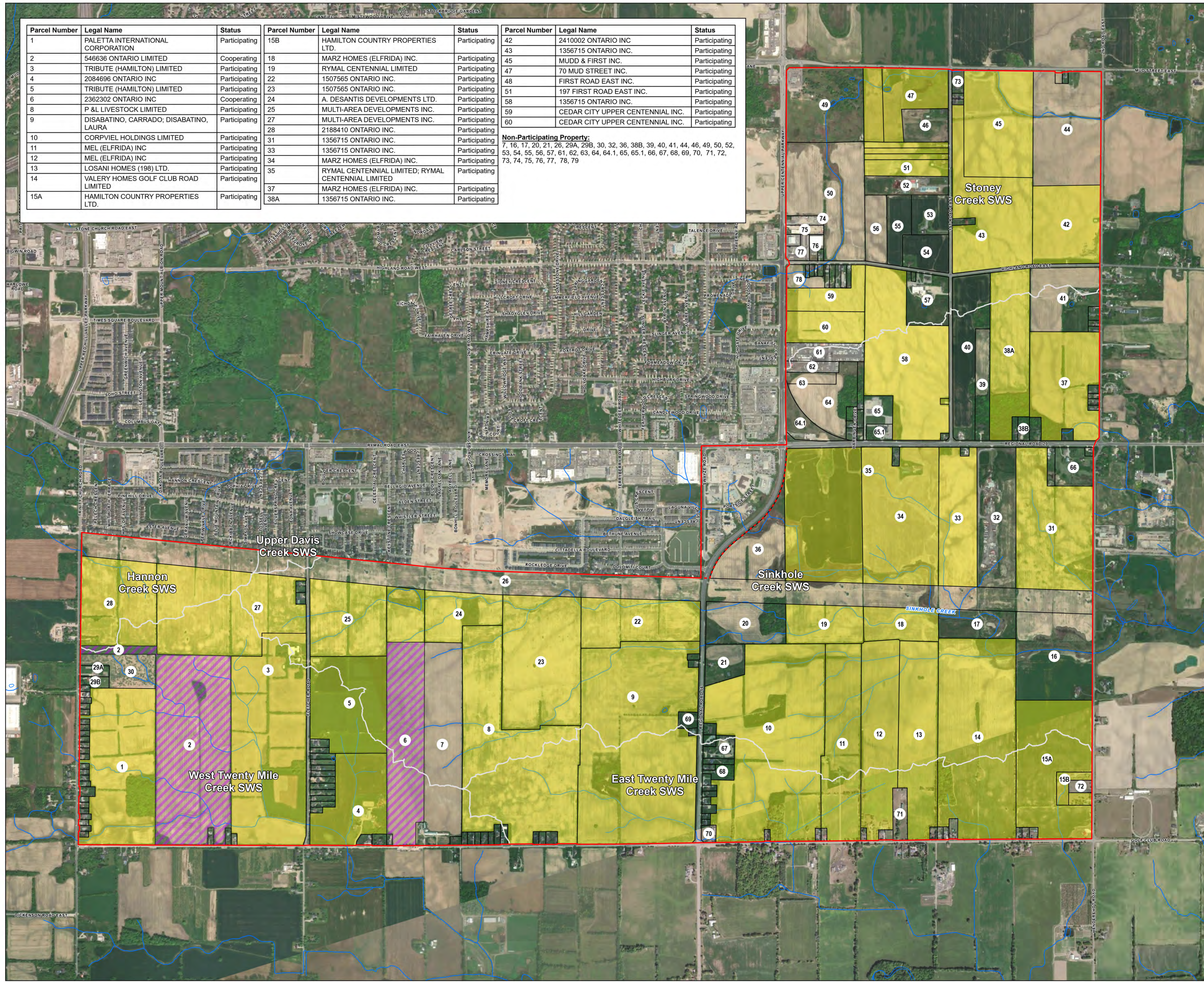
Source Notes:  
 Imagery (2022) provided by Bramalea region map service. Contains information licensed under the Open Government Licence – Ontario.

CLIENT  
 Elfrida Community Builders Group Inc.

PROJECT  
 Elfrida Subwatershed Plan

  	TITLE <b>Elfrida Subwatersheds / Study Area</b>
	REF. NO. 2306301-1-1
	<b>Figure 1.3.1</b>

Parcel Number	Legal Name	Status	Parcel Number	Legal Name	Status	Parcel Number	Legal Name	Status
1	PALETTA INTERNATIONAL CORPORATION	Participating	15B	HAMILTON COUNTRY PROPERTIES LTD.	Participating	42	2410002 ONTARIO INC	Participating
2	546636 ONTARIO LIMITED	Cooperating	18	MARZ HOMES (ELFRIDA) INC.	Participating	43	1356715 ONTARIO INC.	Participating
3	TRIBUTE (HAMILTON) LIMITED	Participating	19	RYMAL CENTENNIAL LIMITED	Participating	45	MUDD & FIRST INC.	Participating
4	2084696 ONTARIO INC	Participating	22	1507565 ONTARIO INC.	Participating	47	70 MUD STREET INC.	Participating
5	TRIBUTE (HAMILTON) LIMITED	Participating	23	1507565 ONTARIO INC.	Participating	48	FIRST ROAD EAST INC.	Participating
6	2362302 ONTARIO INC	Cooperating	24	A. DESANTIS DEVELOPMENTS LTD.	Participating	51	197 FIRST ROAD EAST INC.	Participating
8	P & L LIVESTOCK LIMITED	Participating	25	MULTI-AREA DEVELOPMENTS INC.	Participating	58	1356715 ONTARIO INC.	Participating
9	DISABATINO, CARRADO, DISABATINO, LAURA	Participating	27	MULTI-AREA DEVELOPMENTS INC.	Participating	59	CEDAR CITY UPPER CENTENNIAL INC.	Participating
10	CORPVEL HOLDINGS LIMITED	Participating	28	2188410 ONTARIO INC.	Participating	60	CEDAR CITY UPPER CENTENNIAL INC.	Participating
11	MEL (ELFRIDA) INC	Participating	31	1356715 ONTARIO INC.	Participating	<b>Non-Participating Property:</b> 7, 16, 17, 20, 21, 26, 29A, 29B, 30, 32, 36, 38B, 39, 40, 41, 44, 46, 49, 50, 52, 53, 54, 55, 56, 57, 61, 62, 63, 64, 64.1, 65, 65.1, 66, 67, 68, 69, 70, 71, 72, 73, 74, 75, 76, 77, 78, 79		
12	MEL (ELFRIDA) INC	Participating	33	1356715 ONTARIO INC.	Participating			
13	LOSANI HOMES (198) LTD.	Participating	34	MARZ HOMES (ELFRIDA) INC.	Participating			
14	VALERY HOMES GOLF CLUB ROAD LIMITED	Participating	35	RYMAL CENTENNIAL LIMITED; RYMAL CENTENNIAL LIMITED	Participating			
15A	HAMILTON COUNTRY PROPERTIES LTD.	Participating	37	MARZ HOMES (ELFRIDA) INC.	Participating			
			38A	1356715 ONTARIO INC.	Participating			



**LEGEND**

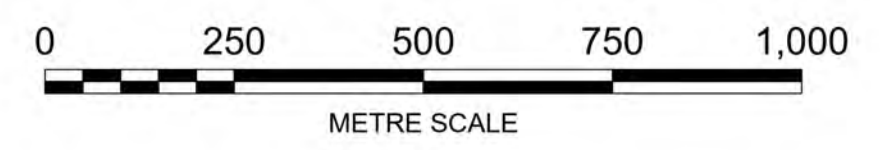
- Study Area
- Additional Lands (Unsurveyed)
- Subwatershed Boundary

**Subject Properties**

- Participating Property
- Participating Property (As of January 2026)<sup>1</sup>
- Cooperating Owner
- Non Participating Property
- Drainage Feature<sup>2</sup>

1 - As of January 2026, due to changes in land ownership, these parcels are now considered participating properties. However, as no field surveys were conducted on these lands between 2023 and 2025, these parcels are considered to be unassessed.  
 2 - Watercourses as labelled by Geohub Ontario mapping. Subject to refinement following field studies

**NOTE: The information contained within this figure is preliminary and will be refined during further study.**



North American Datum 1983  
 Universal Transverse Mercator Projection Zone 17  
 Scale: 1:10,000  
 Page Size: ANSI D (22 x 34 inches)

Drawn: SM  
 Checked: DJ  
 Date: Apr 14, 2026



Source Notes:  
 Imagery (2022) provided by Bramalea region map service. Contains information licensed under the Open Government Licence - Ontario.

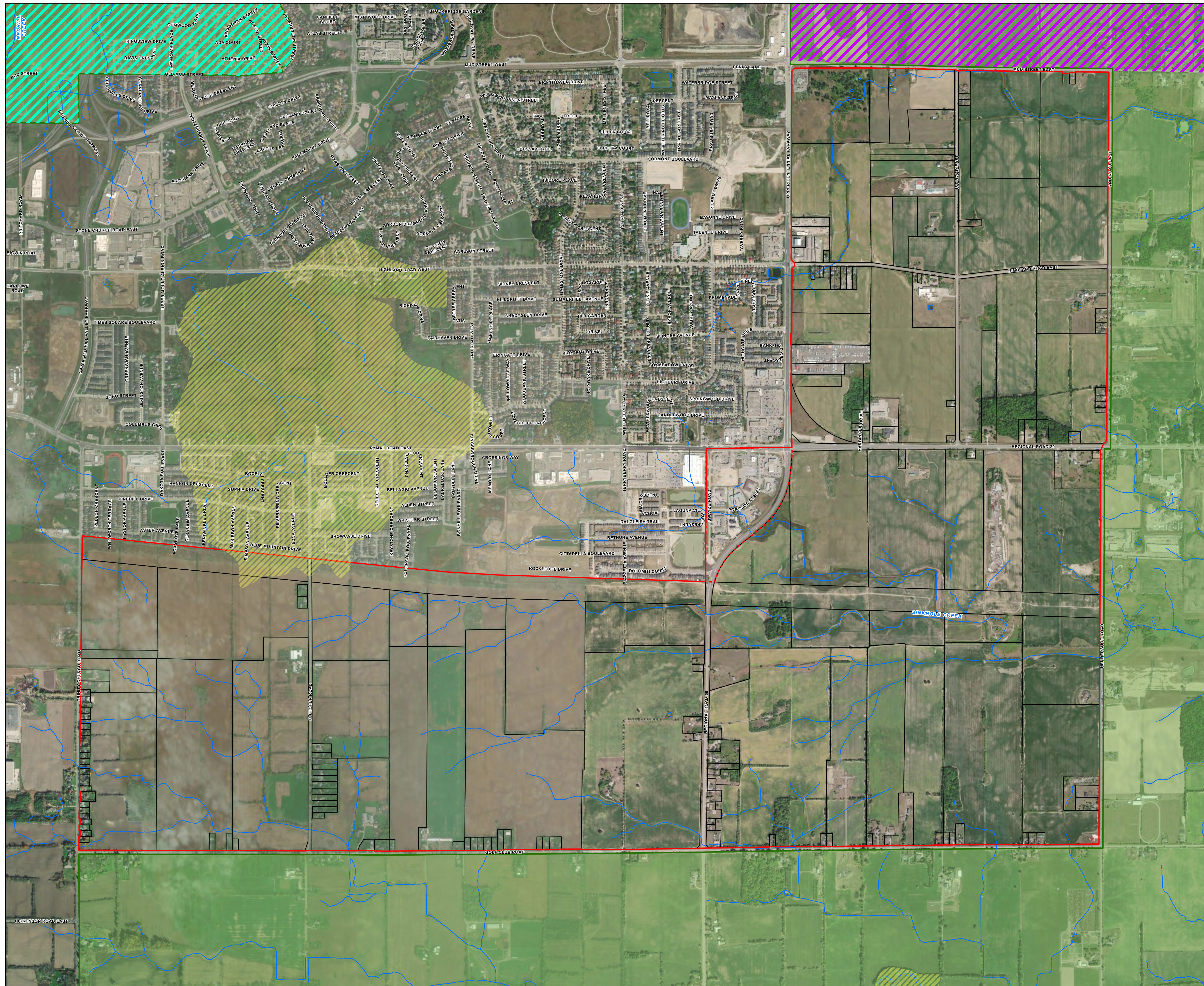
CLIENT  
 Elfrida Community Builders Group Inc.

PROJECT  
 Elfrida Subwatershed Plan

TITLE  
**Land Ownership Mapping**

REF. NO.  
 2306301-2-1

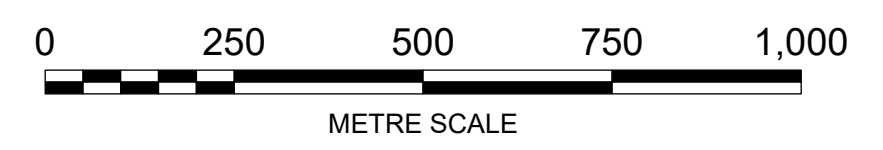
**Figure 1.4.1**



- LEGEND**
- Study Area
  - Additional Lands (Unsurveyed)
  - Subject Property
  - Greenbelt "Protected Countryside" Land Use Designation
  - Greenbelt Specialty Crop Area
  - Niagara Escarpment Plan
  - Eramosa Karst Provincial Earth Science ANS1<sup>1</sup>
  - Drainage Feature<sup>2</sup>

1 - Geohub Ontario  
 2 - Watercourses as labelled by Geohub Ontario mapping. Subject to refinement following field studies.

**NOTE: The information contained within this figure is preliminary and will be refined during further study.**



North American Datum 1983  
 Universal Transverse Mercator Projection Zone 17  
 Scale: 1:10,000  
 Page Size: ANSI D (22 x 34 inches)

Drawn: SM  
 Checked: DJ  
 Date: Jan 26, 2026



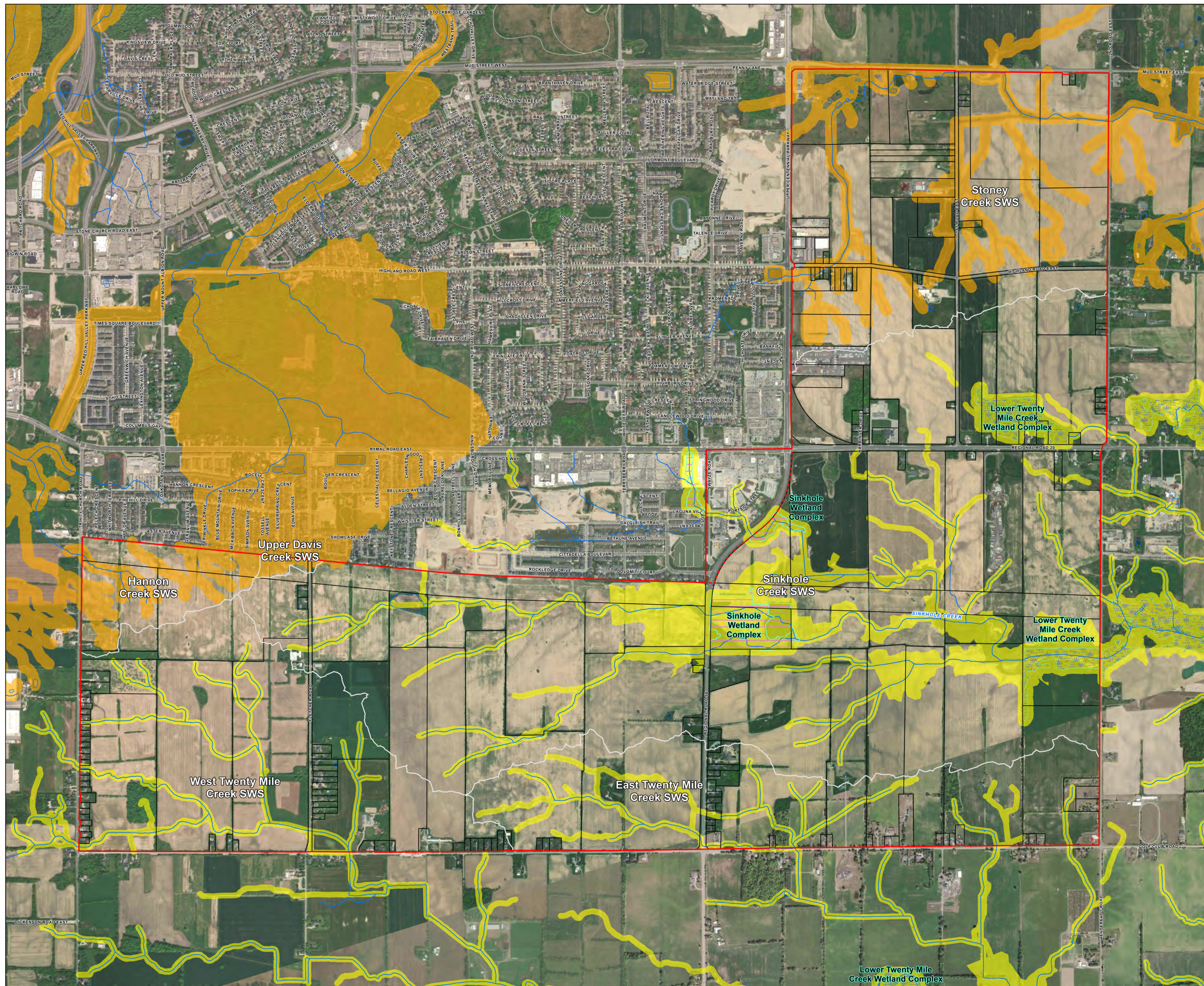
Source Notes:  
 Imagery (2022) provided by Bramalea region map service. Contains information licensed under the Open Government Licence – Ontario.

CLIENT  
 Elfrida Community Builders Group Inc.

PROJECT  
 Elfrida Subwatershed Plan



TITLE	<b>Provincial Policy Areas</b>
REF. NO.	2306301-3-1
<b>Figure 2.2.1</b>	



**LEGEND**

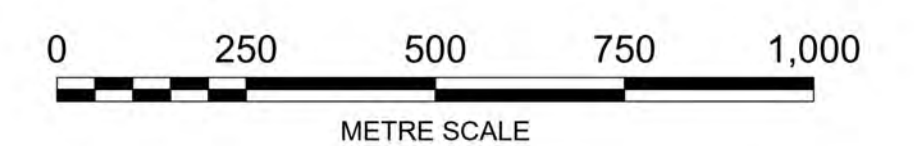
- Study Area
- Additional Lands (Unsurveyed)
- Subject Property
- Subwatershed Boundary
- NPCA Regulated Area (Approximate)
- HCA Regulated Area
- Drainage Feature<sup>1</sup>

**Wetland<sup>2,3</sup>**

- Unevaluated
- Evaluated-Other
- Evaluated-Provincially Significant

1 - Watercourses as labelled by Geohub Ontario mapping. Subject to refinement following field studies.  
 2 - To be further assessed in subsequent studies.  
 3 - Geohub Ontario

**NOTE: The information contained within this figure is preliminary and will be refined during further study.**



North American Datum 1983  
 Universal Transverse Mercator Projection Zone 17  
 Scale: 1:10,000  
 Page Size: ANSI D (22 x 34 inches)

Drawn: SM  
 Checked: DJ  
 Date: Apr 14, 2026



Source Notes:  
 Imagery (2022) provided by Bramalea region map service. Contains information licensed under the Open Government Licence – Ontario.

CLIENT  
 Elfrida Community Builders Group Inc.

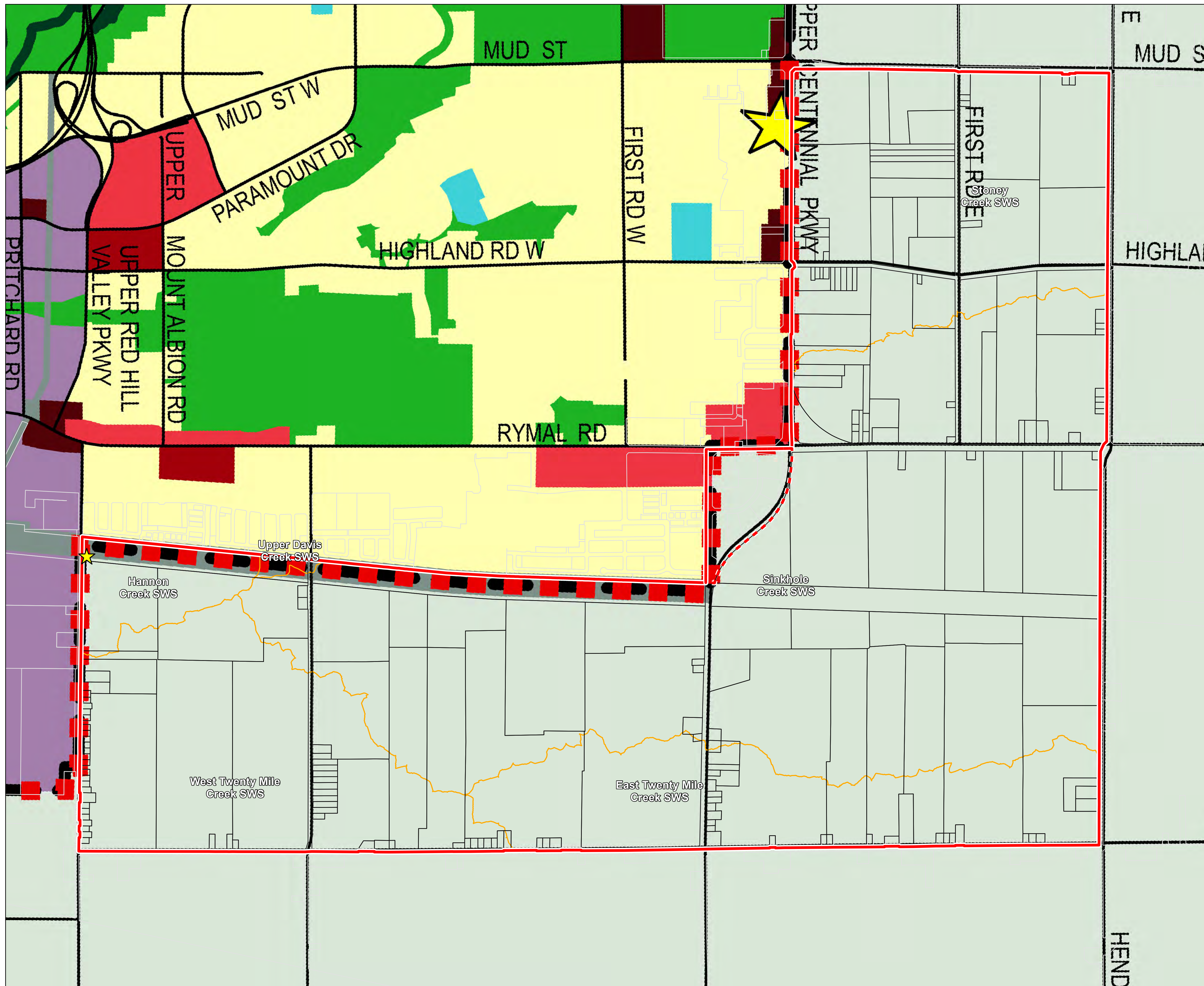
PROJECT  
 Elfrida Subwatershed Plan



TITLE  
**HCA/NPCA Regulated Areas  
 (O.Reg. 41/24)**

REF. NO.  
 2306301-4-1

**Figure 2.2.2**



**LEGEND**

- Study Area
- Additional Lands (Unsurveyed)
- Subject Property
- Subwatershed Boundary

**Urban Hamilton Official Plan (UHOP) Land Use Designation<sup>1</sup>**

- Neighbourhoods
- Open Space
- Institutional
- Utility

**Commercial and Mixed Use Designations**

- Arterial Commercial
- Mixed Use - Medium Density
- District Commercial

**Employment Area Designations**

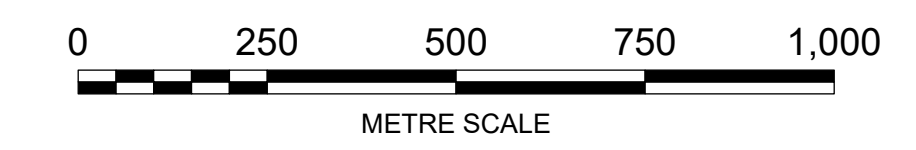
- Business Park

**Other Features**

- Rural Area
- ★ UHOPA NO. 69 APPEALS

1 - Contains City of Hamilton data made available under a Data Licensing Agreement for exclusive use in the Elfrida Subwatershed Study, dated August 29, 2025.

**NOTE: The information contained within this figure is preliminary and will be refined during further study.**



North American Datum 1983  
 Universal Transverse Mercator Projection Zone 17  
 Scale: 1:10,000  
 Page Size: ANSI D (22 x 34 inches)

Drawn: SM  
 Checked: DJ  
 Date: Jan 26, 2026



Source Notes:  
 Imagery (2022) provided by Bramalea region map service. Contains information licensed under the Open Government Licence - Ontario.

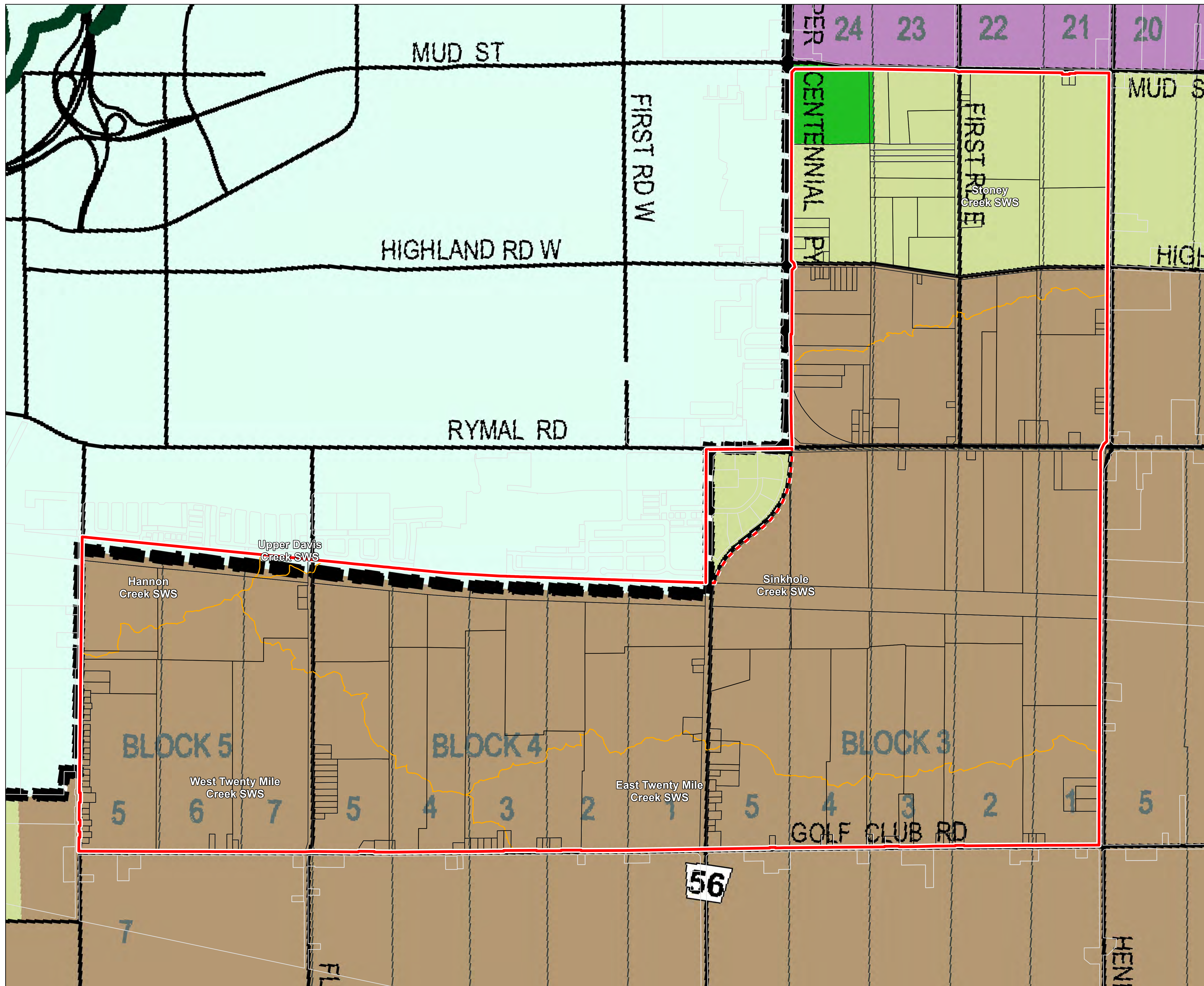
CLIENT  
 Elfrida Community Builders Group Inc.

PROJECT  
 Elfrida Subwatershed Plan

TITLE  
**Existing Land Use Designations (UHOP)**

REF. NO.  
 2306301-2.3.1(a)-1

**Figure 2.3.1(a)**



**LEGEND**

- Study Area
- Additional Lands (Unsurveyed)
- Subject Property
- Subwatershed Boundary

**Rural Hamilton Official Plan (RHOP) Land Use Designation<sup>1</sup>**

Rural Land Use Designations

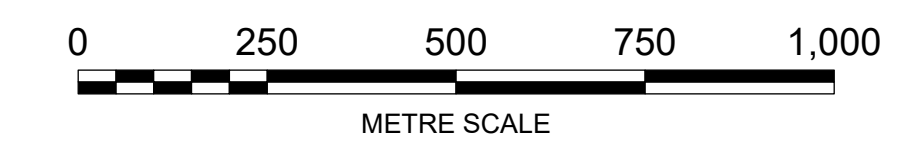
- Agriculture
- Specialty Crop
- Rural
- Open Space

Other Features

- Urban Area

1 - Contains City of Hamilton data made available under a Data Licensing Agreement for exclusive use in the Elfrida Subwatershed Study, dated August 29, 2025.

**NOTE: The information contained within this figure is preliminary and will be refined during further study.**



North American Datum 1983  
 Universal Transverse Mercator Projection Zone 17  
 Scale: 1:10,000  
 Page Size: ANSI D (22 x 34 inches)

Drawn: SM  
 Checked: DJ  
 Date: Jan 26, 2026

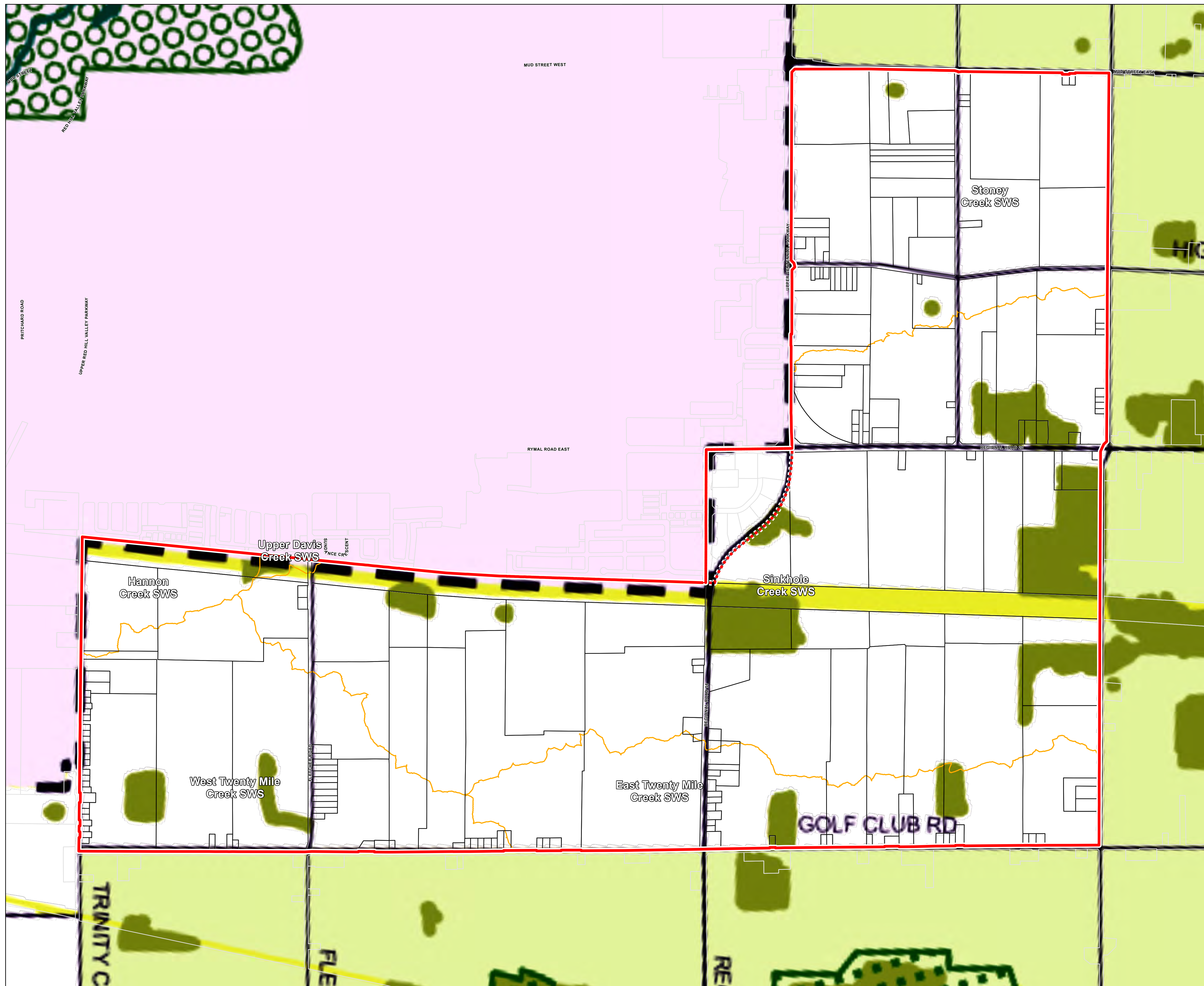


Source Notes:  
 Imagery (2022) provided by Bramalea region map service. Contains information licensed under the Open Government Licence - Ontario.

CLIENT  
 Elfrida Community Builders Group Inc.

PROJECT  
 Elfrida Subwatershed Plan

	TITLE <b>Existing Land Use Designations (RHOP)</b>
	REF. NO. 2306301-2.3.1(b)-1
<b>Figure 2.3.1(b)</b>	

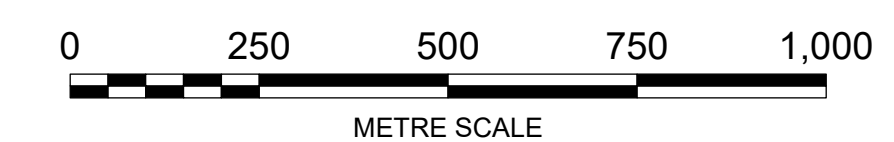


LEGEND

- Study Area
- Additional Lands (Unsurveyed)
- Subject Property
- Subwatershed Boundary
- Natural Heritage Features<sup>1</sup>**
  - Core Area
  - Linkage
  - Greenbelt Protected Countryside
  - Niagara Escarpment Plan
  - Greenbelt Natural Heritage System
- Other Features<sup>1</sup>**
  - Urban Area

1 - Contains City of Hamilton data made available under a Data Licensing Agreement for exclusive use in the Elfrida Subwatershed Study, dated August 29, 2025.

**NOTE: The information contained within this figure is preliminary and will be refined during further study.**



North American Datum 1983  
Universal Transverse Mercator Projection Zone 17

Scale: 1:10,000  
Page Size: ANSI D (22 x 34 inches)

Drawn: SM  
Checked: DJ  
Date: Jan 26, 2026

Source Notes:  
Imagery (2022) provided by Bramalea region map service. Contains information licensed under the Open Government Licence – Ontario.



NORTH

CLIENT  
Elfrida Community Builders Group Inc.

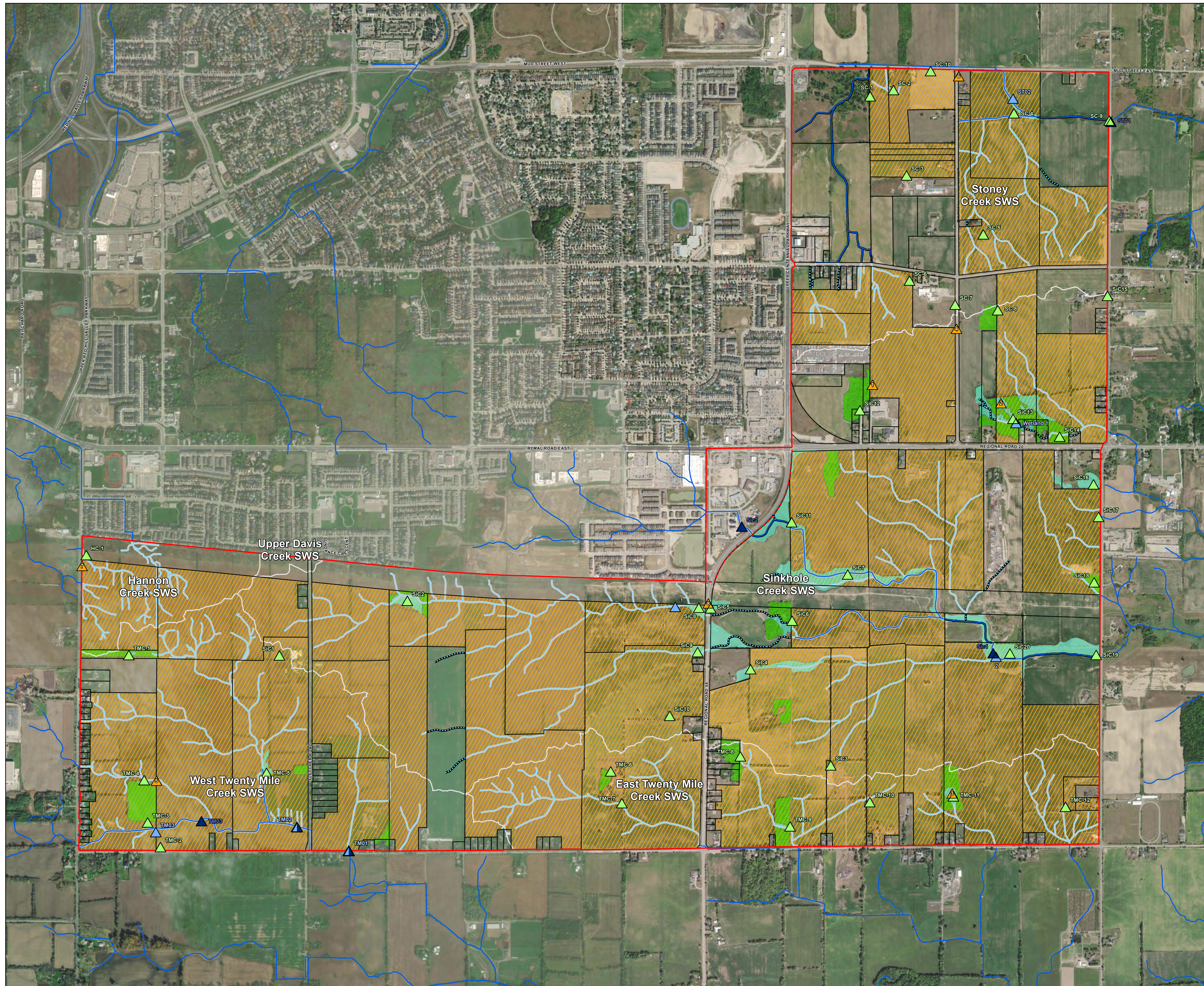
PROJECT  
Elfrida Subwatershed Plan



TITLE  
**Natural Cover  
(as per RHOP Schedule B)**

REF. NO. 2306301-2.3.2-1

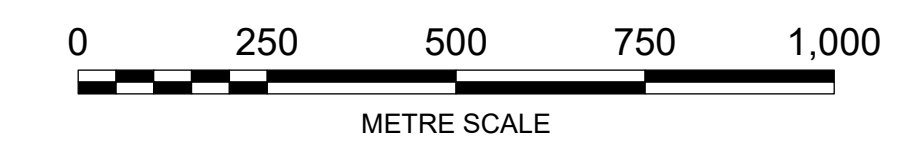
**Figure 2.3.2**



- LEGEND**
- Study Area
  - Additional Lands (Unsurveyed)
  - Subwatershed Boundary
  - Subject Property
  - Wetland<sup>1</sup>
  - Woodland<sup>1</sup>
  - Breeding Bird Survey Area
  - Drainage Feature<sup>2</sup>
  - Headwater Drainage Feature (HDF)<sup>1,3</sup>
  - Unevaluated Drainage Feature within Non-Participating Land
  - Evaluated Drainage Feature within Participating Land
- Wildlife Monitoring Locations**
- ▲ Breeding Amphibian Survey Location
  - ▲ Benthic Sampling Station
  - ▲ Fish Sampling Station
  - ▲ Breeding Bird Point Count Location

1 - Verified through 2023-2025 field investigations.  
 2 - Watercourses as labelled by Geohub Ontario mapping. Subject to refinement following field studies, data has been refined in specific locations based off field observations and satellite imagery to better reflect current conditions.  
 3 - HDF classifications within non participating properties were assessed based on the most conservative adjacent HDF classification.  
 4 - Winter wildlife survey locations can be reviewed on Figure 3.1.4 - Winter Wildlife Survey.

**NOTE:** The information contained within this figure is preliminary and will be refined during further study. Features delineated within non-participating properties will need to be verified at a later date, refer to Fig 1.4.1 for list of non-participating properties.



North American Datum 1983  
 Universal Transverse Mercator Projection Zone 17  
 Scale: 1:10,000  
 Page Size: ANSI D (22 x 34 inches)

Drawn: SM  
 Checked: DJ  
 Date: Jan 26, 2026



Source Notes:  
 Imagery (2022) provided by Bramalea region map service. Contains information licensed under the Open Government Licence – Ontario.

CLIENT  
 Elfrida Community Builders Group Inc.

PROJECT  
 Elfrida Subwatershed Plan

	TITLE <b>Wildlife Survey Locations</b>
	REF. NO. 2306301-3.1.1-1
<b>Figure 3.1.1</b>	