



# CLEAN WATER STARTS HERE

Understanding Source Water  
Protection

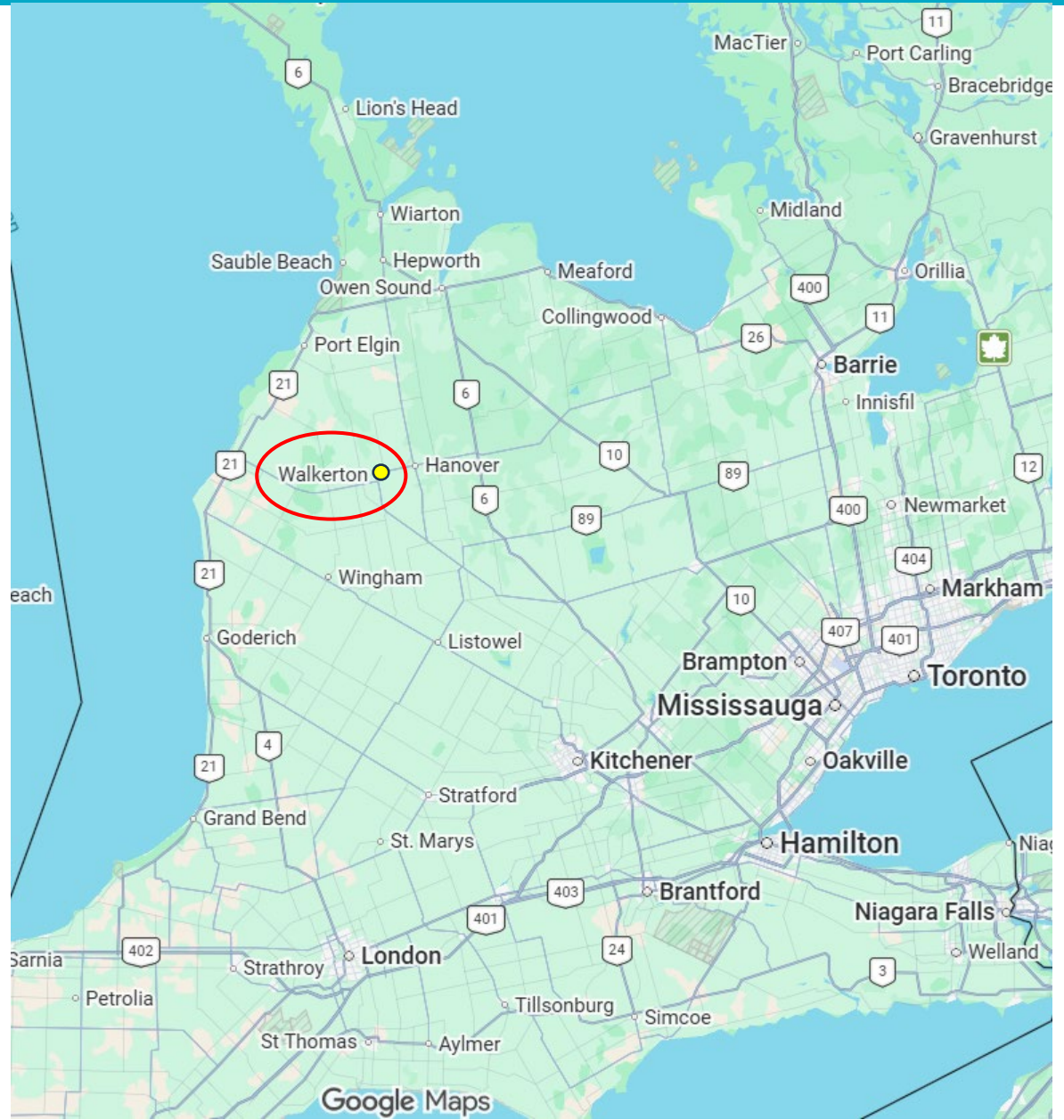
April 2026

# SOURCE WATER PROTECTION



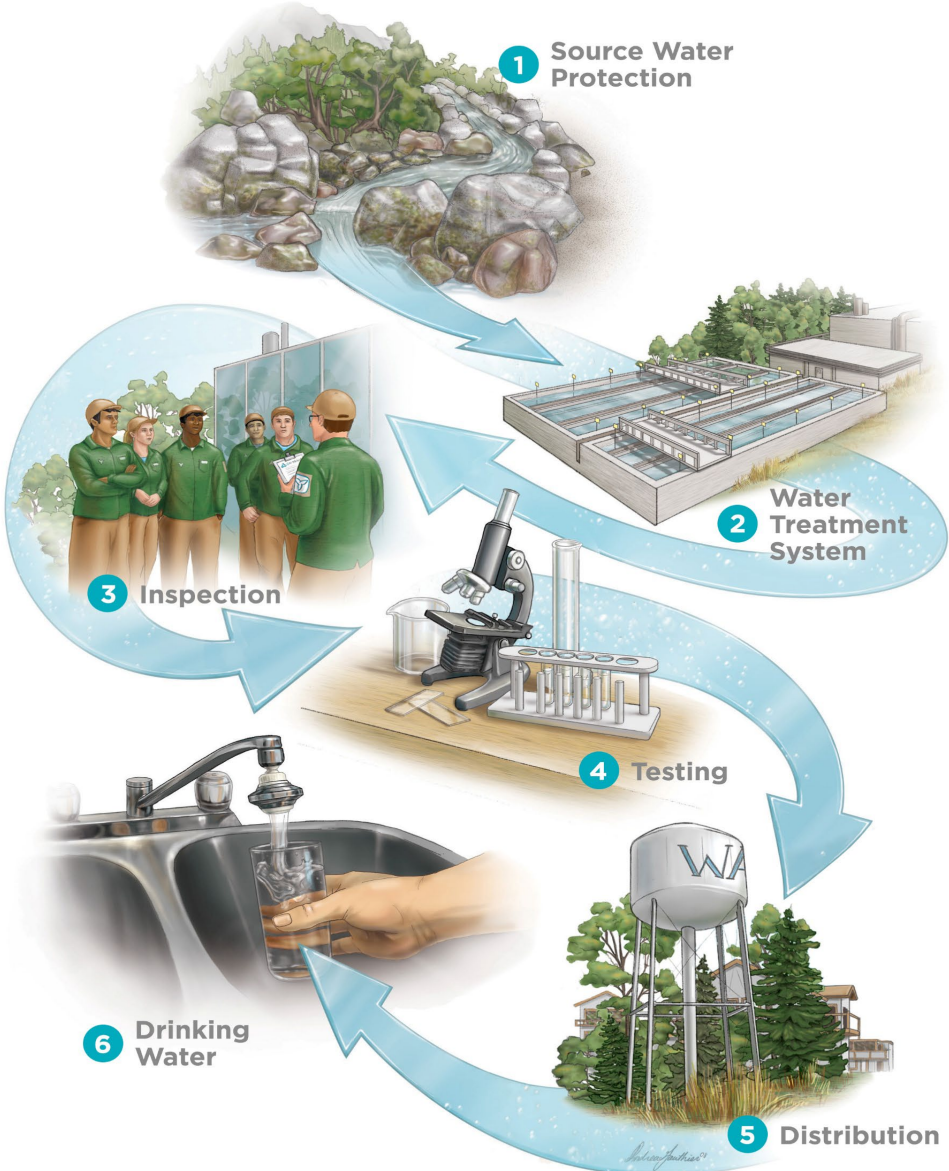
Do you know where  
your drinking water  
comes from?

# WALKERTON – MAY 2000

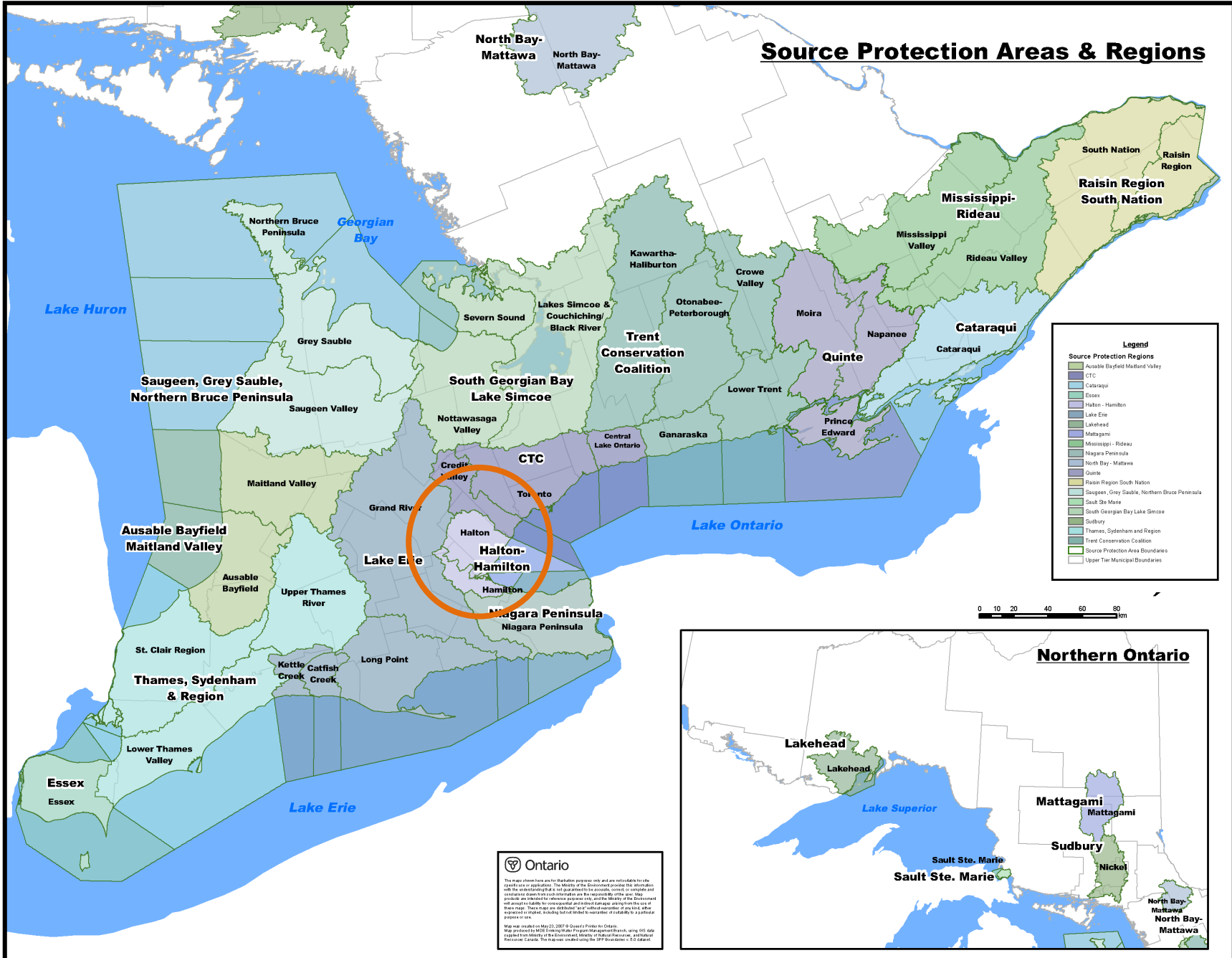


# MULTI-BARRIER APPROACH

**DRINKING WATER**  
**SOURCE PROTECTION**  
Our Actions Matter



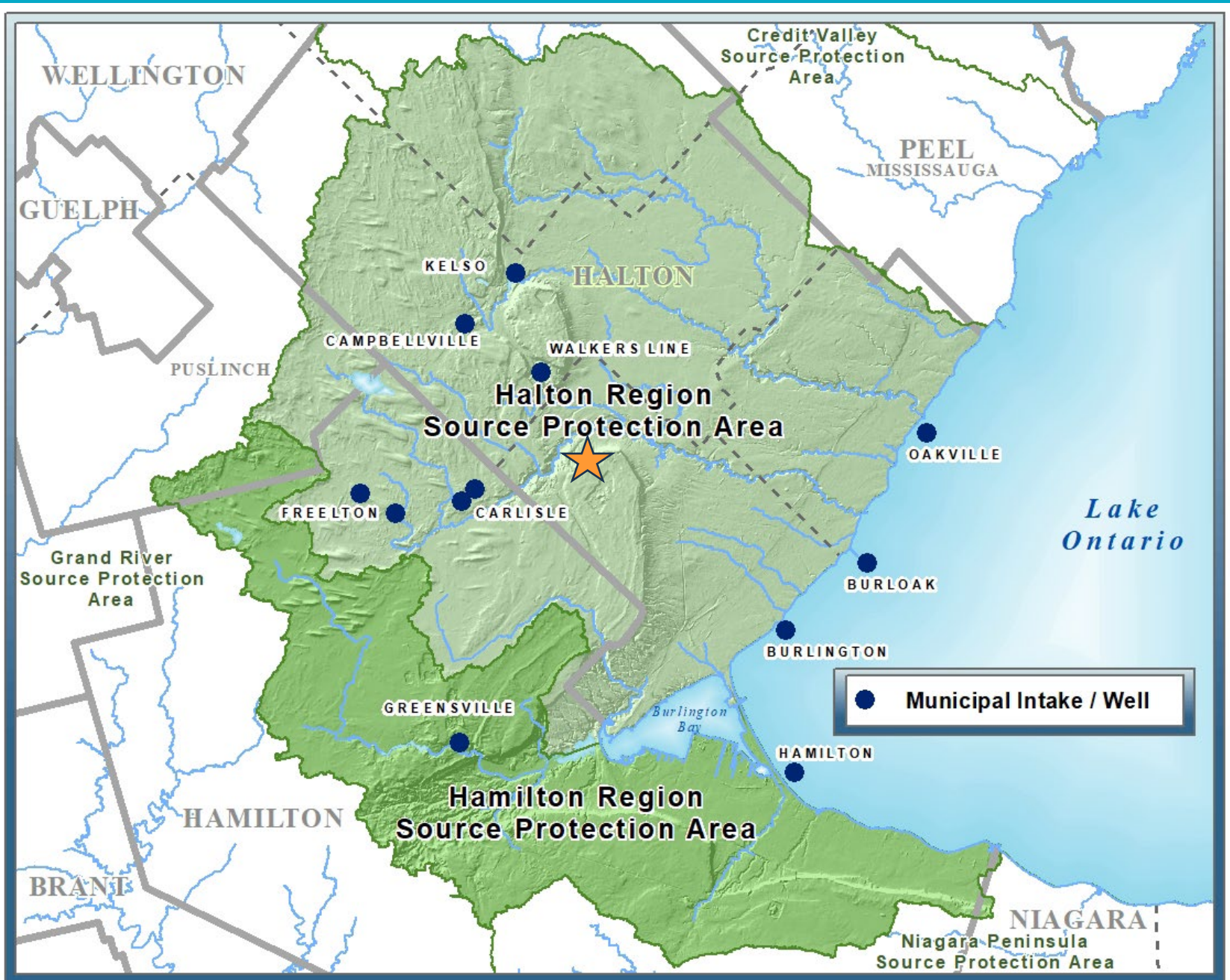
# Source Protection Areas & Regions



**Ontario**

This map shows the boundaries of the Source Protection Regions, which are not subject to change. The Ministry of the Environment provides this information for informational purposes only. The Ministry of the Environment is not responsible for the accuracy, completeness, or timeliness of the information. The Ministry of the Environment is not liable for any damages or losses resulting from the use of this map. These maps are distributed as provided and are not intended to be used for any other purpose. All rights reserved. © 2015 Ontario Ministry of the Environment.





# SOURCE PROTECTION COMMITTEE



# HALTON-HAMILTON SOURCE PROTECTION PLAN



## SOURCE PROTECTION PLAN

**This document contains two Source Protection Plans for the following Source Protection Areas:**

- Halton Region
- Hamilton Region

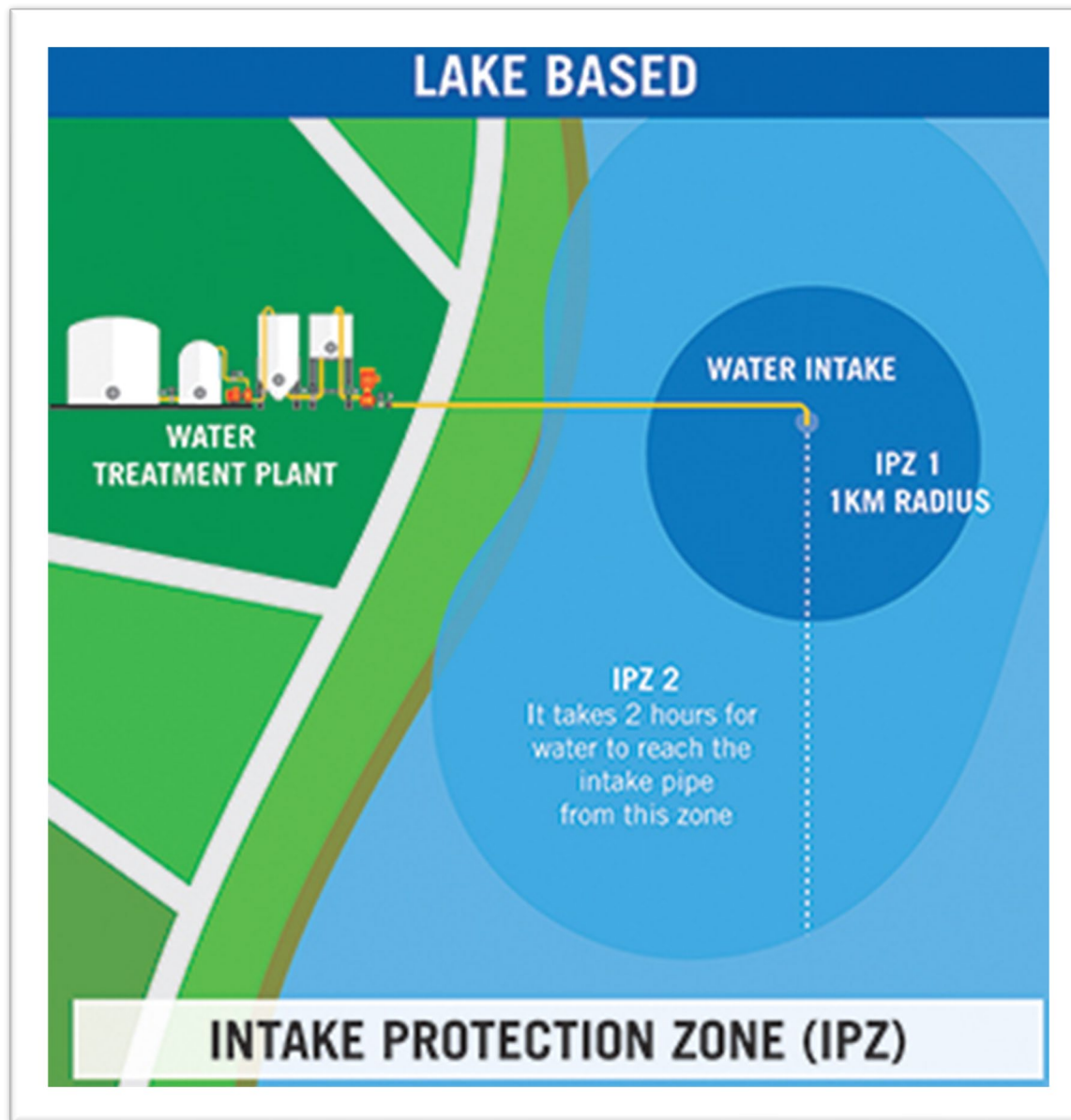
**Policies included apply to both Source Protection Areas.**

- Initially approved by the Ministry of the Environment and Climate Change on August 5, 2015
- In effect since December 31, 2015
- Amendment approved January 30, 2019
- Proposed Updates: March 15, 2022

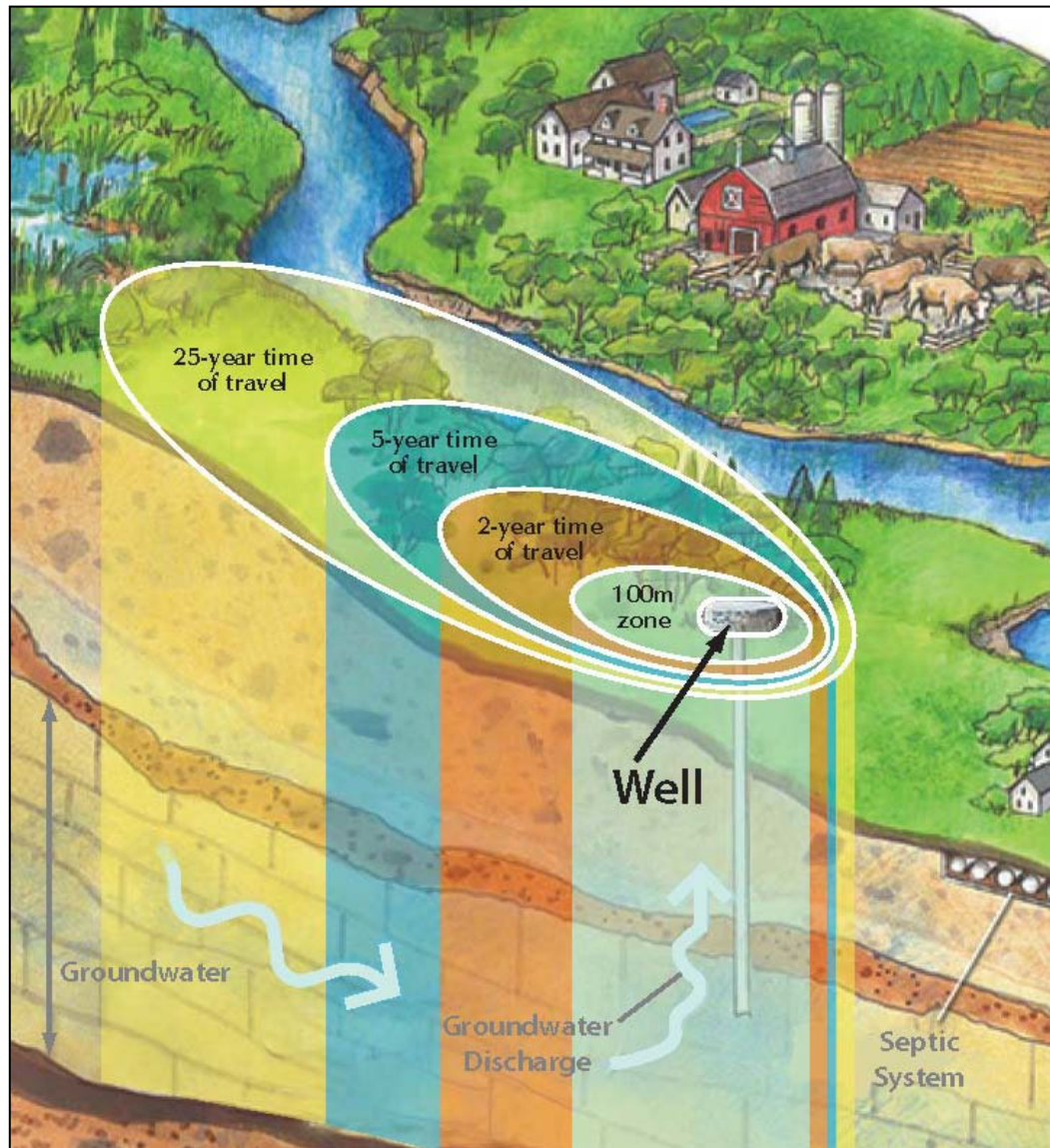
# VULNERABLE AREAS



# INTAKE PROTECTION ZONE



















# WELLHEAD PROTECTION AREA



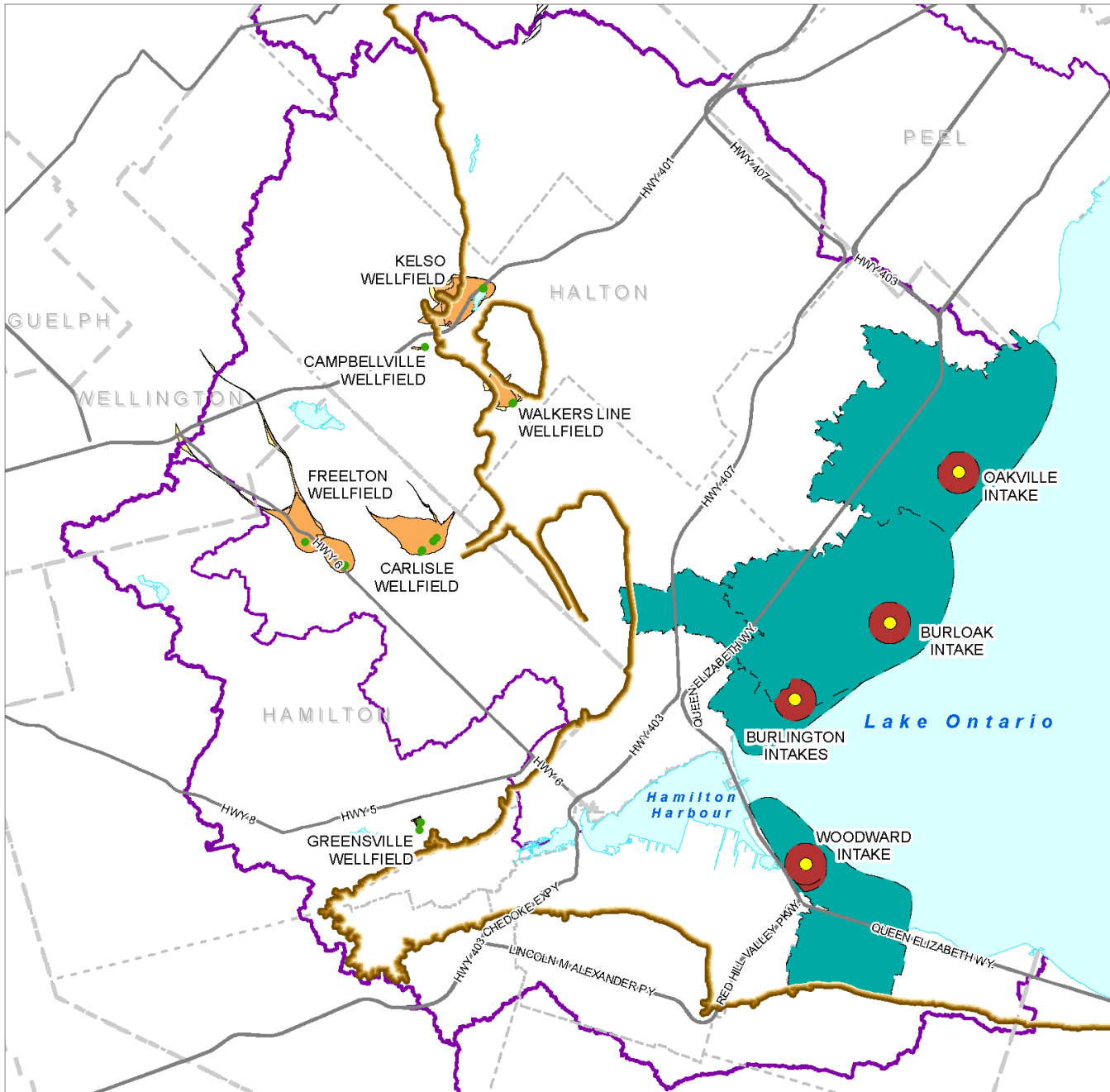
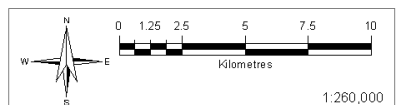
**Halton-Hamilton  
Intake Protection Zones  
and Wellhead Protection  
Areas**

**Legend**

-  Source Protection Region
-  Source Protection Area
-  Municipal Intake
-  Upper Tier Municipality
-  Lower Tier Municipality
-  Niagara Escarpment
-  Highway
- Intake Protection Zone (IPZ)**
-  1
-  2
-  Waterbody
-  Well
- Wellhead Protection Area (WHPA)**
-  A
-  B
-  C
-  D
-  Issue Contributing Area

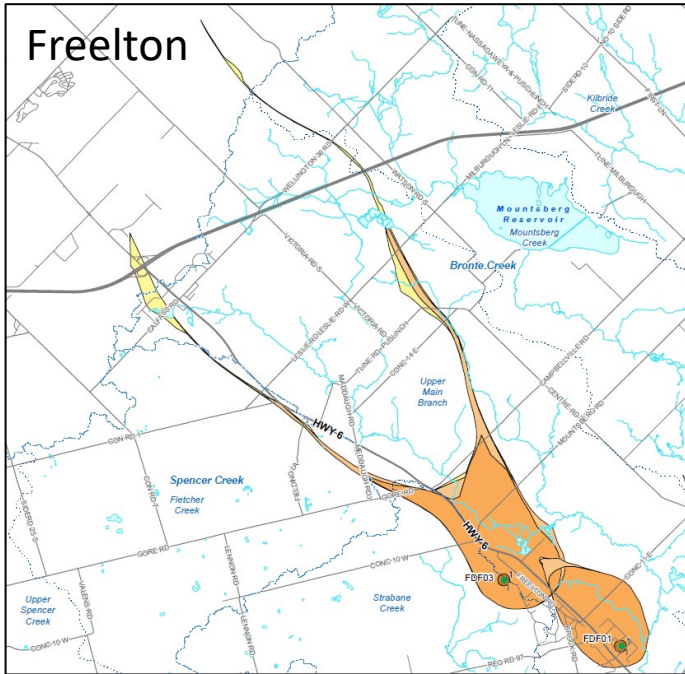
Source : Earthfix Groundwater Model, Ministry of Natural Resources, Stantec Consulting

Projection : UTM NAD 83 Zone 17  
Date : May 2023

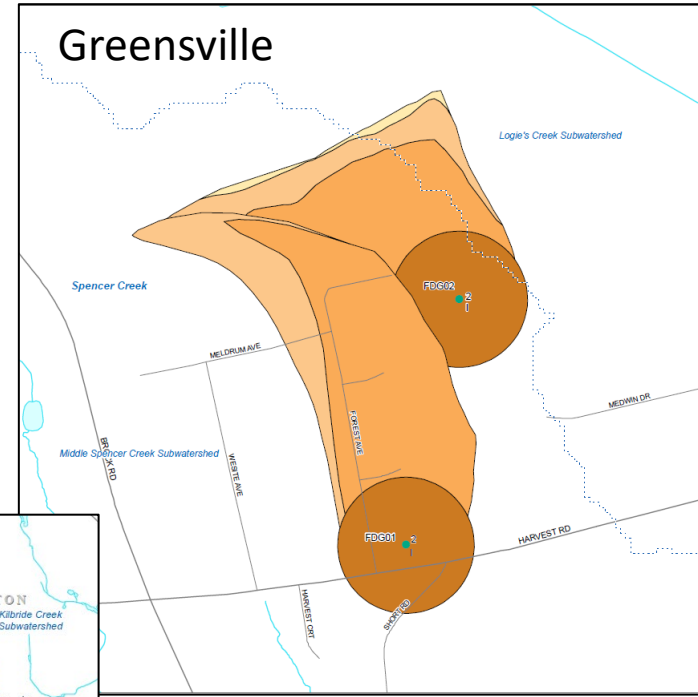


# WELLHEAD PROTECTION AREAS

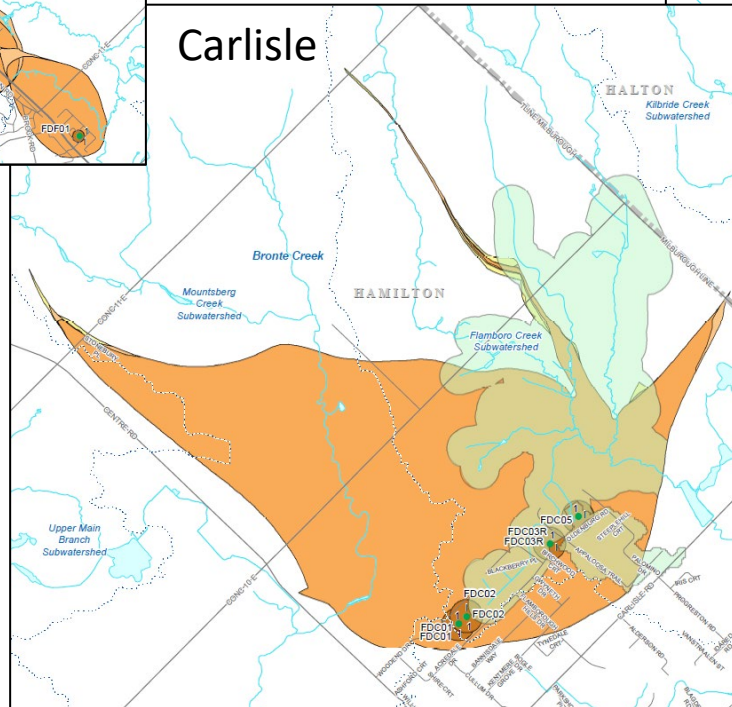
## Freelton



## Greenville



## Carlisle



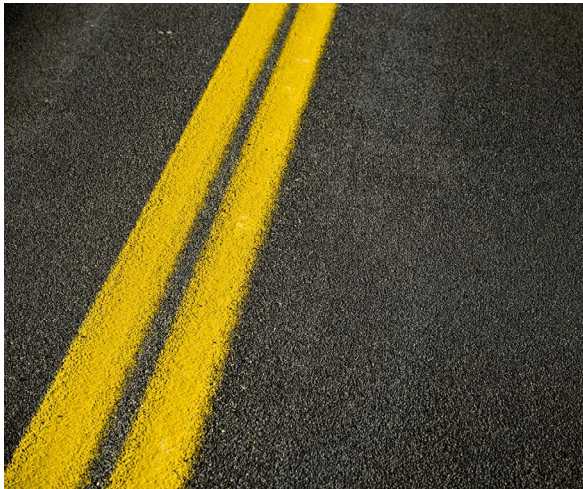
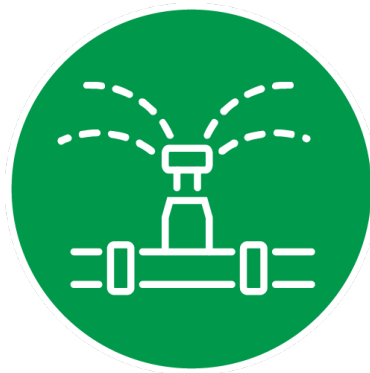
### Legend

- Watersheds
- Subwatersheds
- Roads**
  - Highway
  - Regional
  - Local
- ~ Hydrography
- ◡ Waterbody
- Municipal Well
- Wellhead Protection Area (WHPA)**
  - A (100 metre)
  - B (2 year)
  - C (5 year)
  - D (25 year)

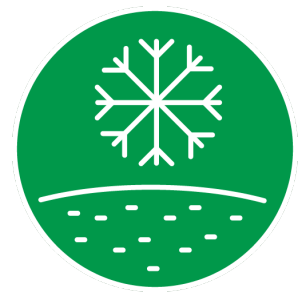
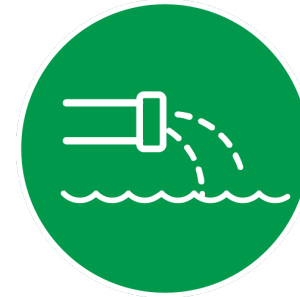
*The Clean Water Act, 2006  
identifies 22 activities that pose  
threats to the quality and quantity  
of drinking water sources.*

*Ontario Regulation 287/07*

# WATER QUANTITY THREATS



# WATER QUALITY THREATS



# SEPTIC SYSTEMS



Septic systems can release contaminants if they leak, overflow, or fail.



# SOURCE PROTECTION PLAN POLICIES

## Managing Activities



- Education & Outreach
- Incentives
- Best Management Practices
- Land Use Planning
- Risk Management Plans
- Prohibition

# SOURCE PROTECTION SUCCESS

## **5** *Ways to Protect Drinking Water*

1. Do not pour hazardous liquids down the drain or toilet.
2. Only use road salt when necessary.
3. Check your home heating fuel tanks for leaks.
4. Have your septic system inspected regularly.
5. Clean up your pet's waste.

#SourceWaterON

Thank you