

Appendix B:

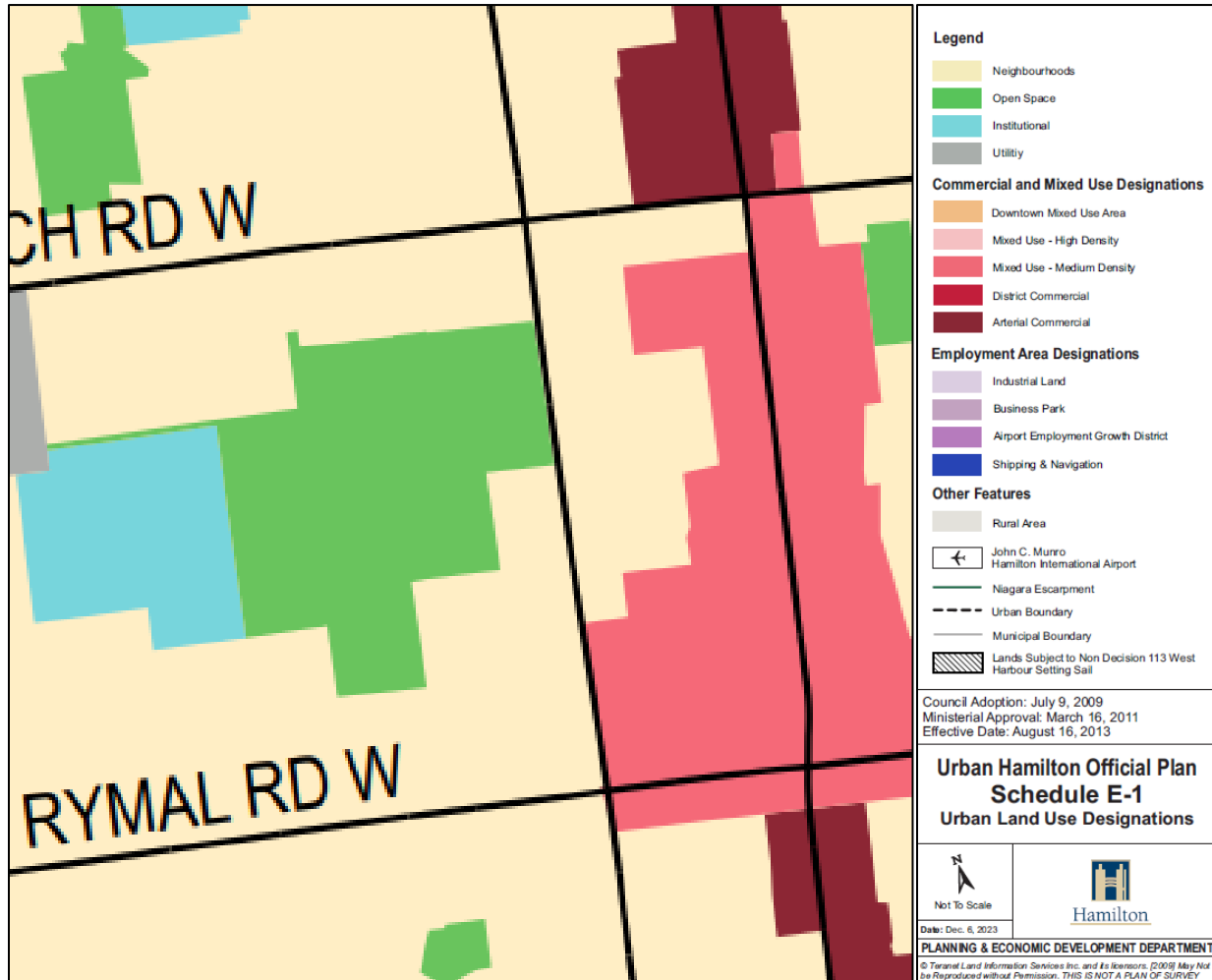
Land Use Policy Review Figures

Land Use Review Figures

Excerpts from relevant policy documents

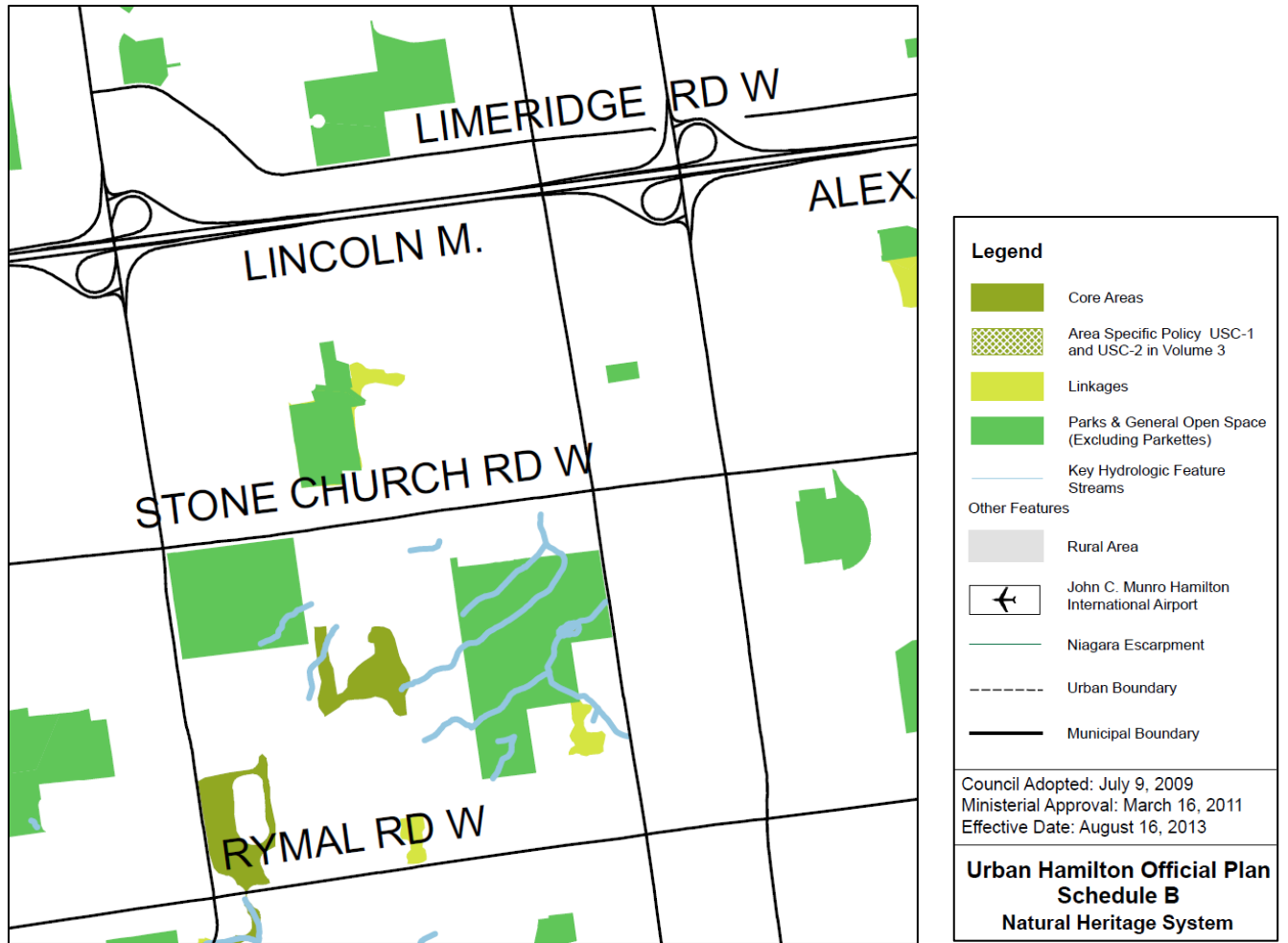
Section A: Relevant Hamilton Urban Official Plan Figures

Schedule E1 – Urban Land Uses



Excerpt from Schedule E-1 Land Use Designations, Hamilton Urban Official Plan, November 2022

Schedule B – Natural Heritage System



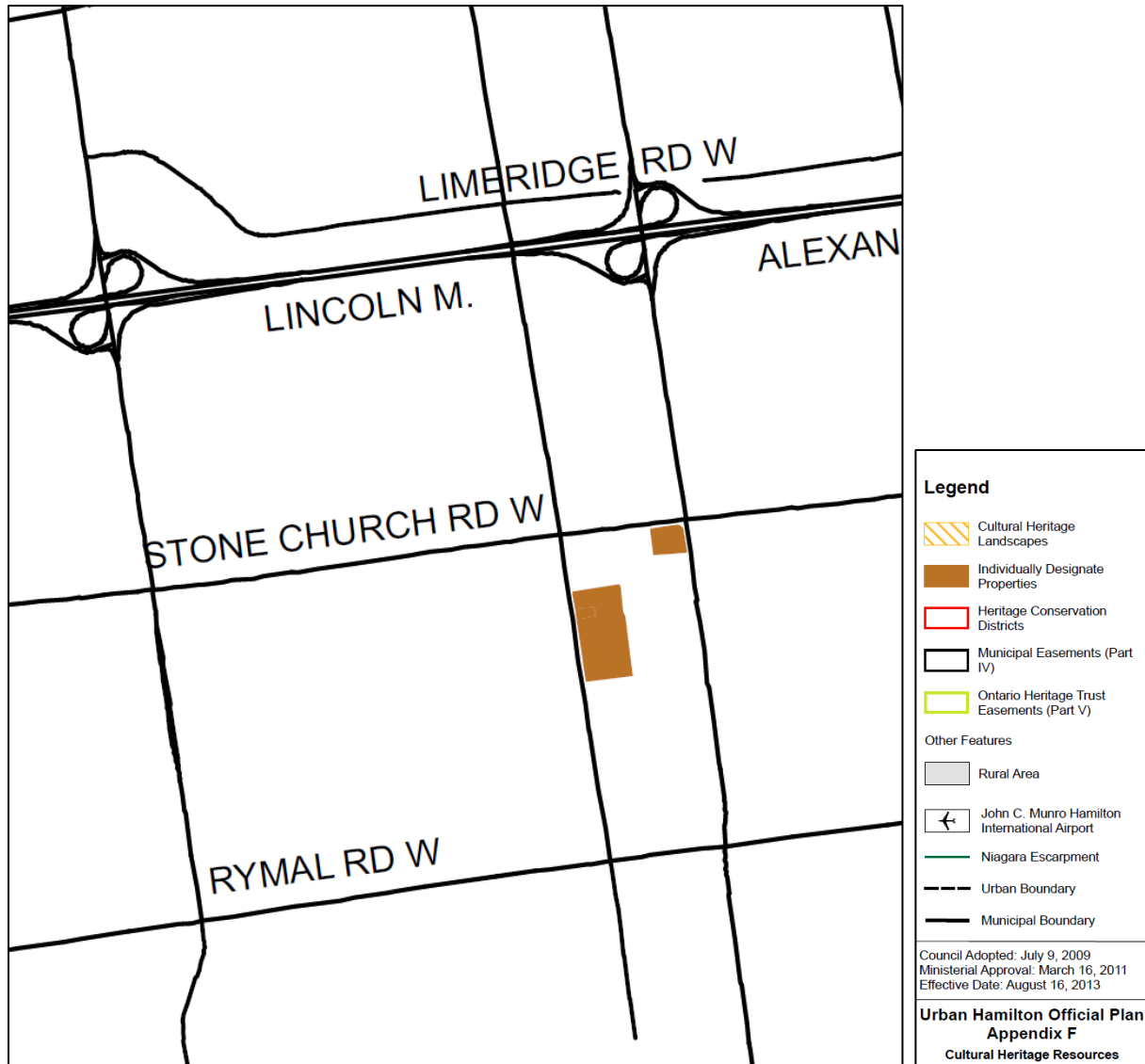
Excerpt from Schedule B, Natural Heritage System, Hamilton Urban Official Plan, November 2022

Schedule C – Functional Road Classification



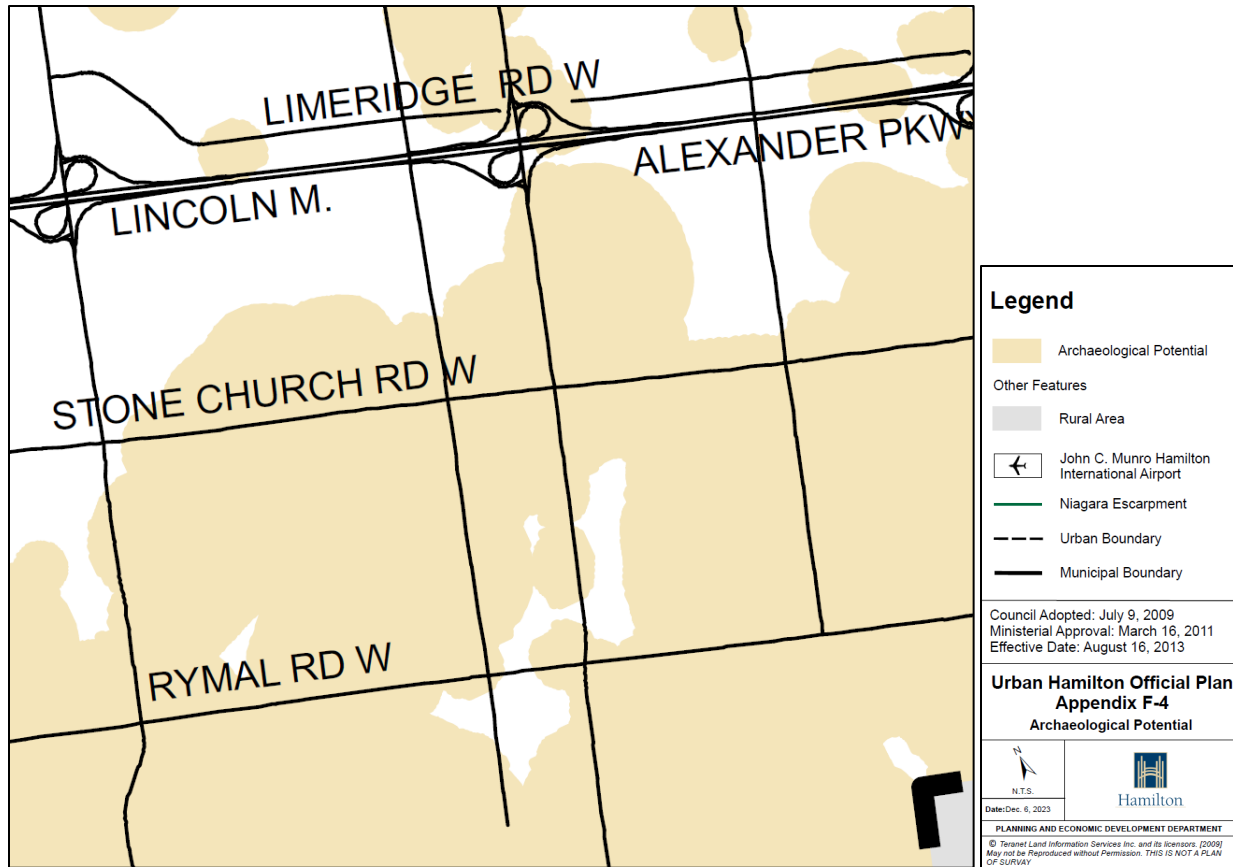
Excerpt from Schedule C, Functional Road Classification, Hamilton Urban Official Plan, November 2022

Cultural Heritage Resources



Excerpt from Appendix F, Cultural Heritage Resources, Hamilton Urban Official Plan, November 2022

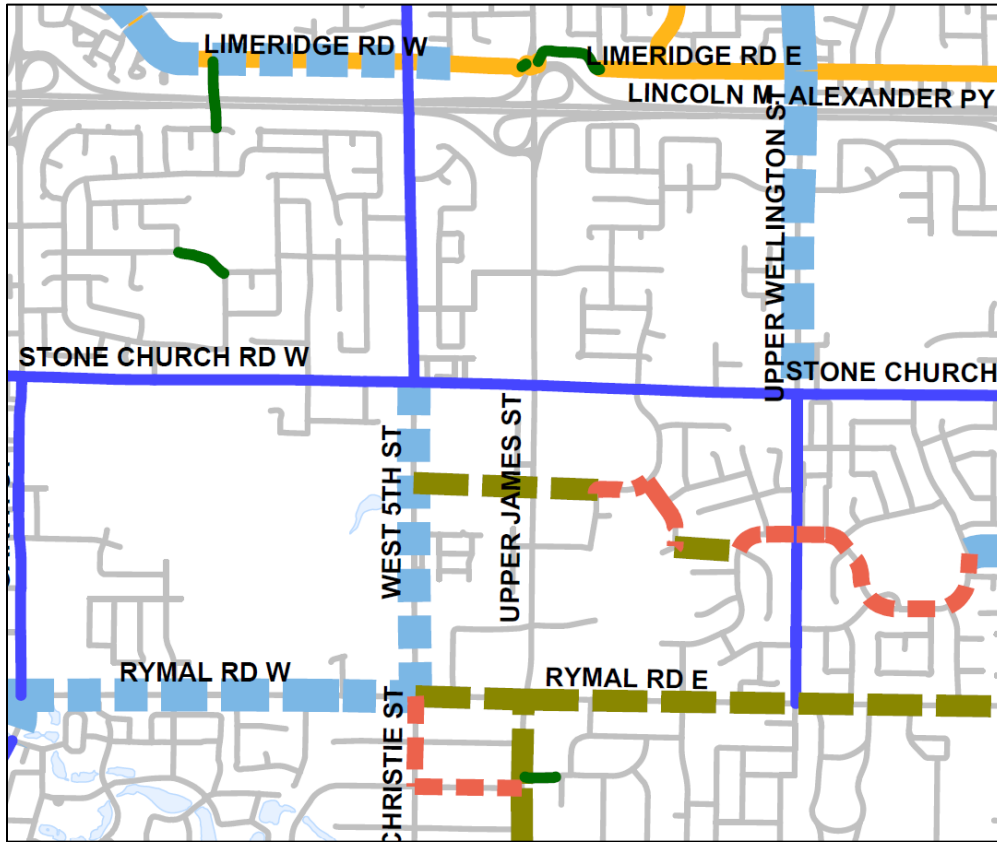
Appendix F-4 Archaeology Potential



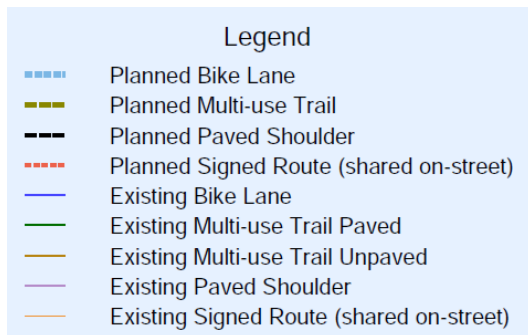
Excerpt from Appendix F-4 – Archaeological Potential, Hamilton Urban Official Plan, November 2022

Section B: Transportation Master Plan Update Relevant Figures

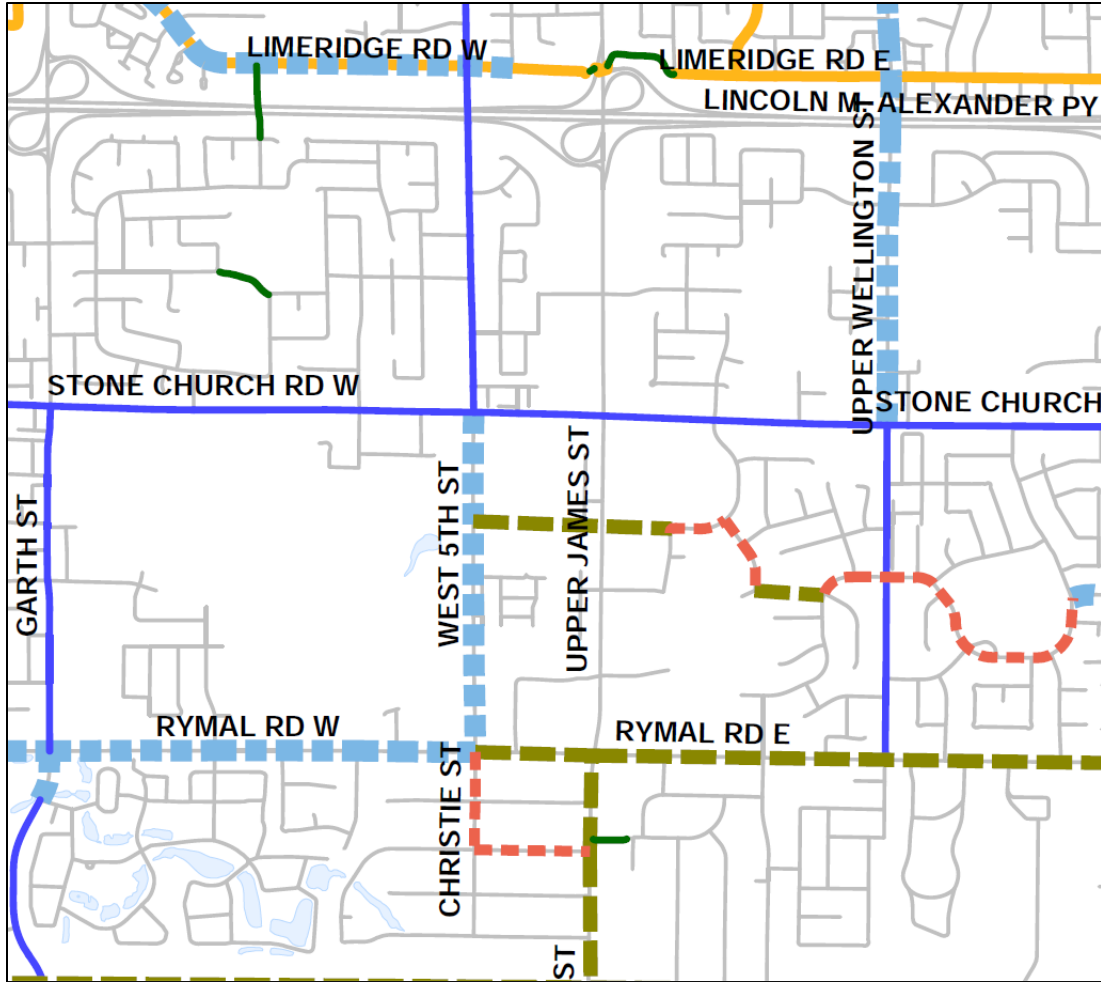
Map 1A: Planned Cycling Network



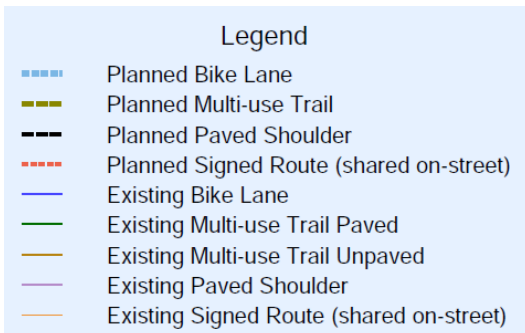
Except from: City of Hamilton, 2018 Transportation Master Plan Update, 2018



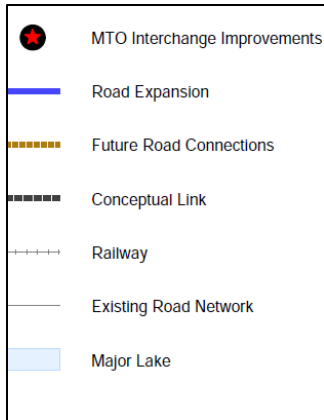
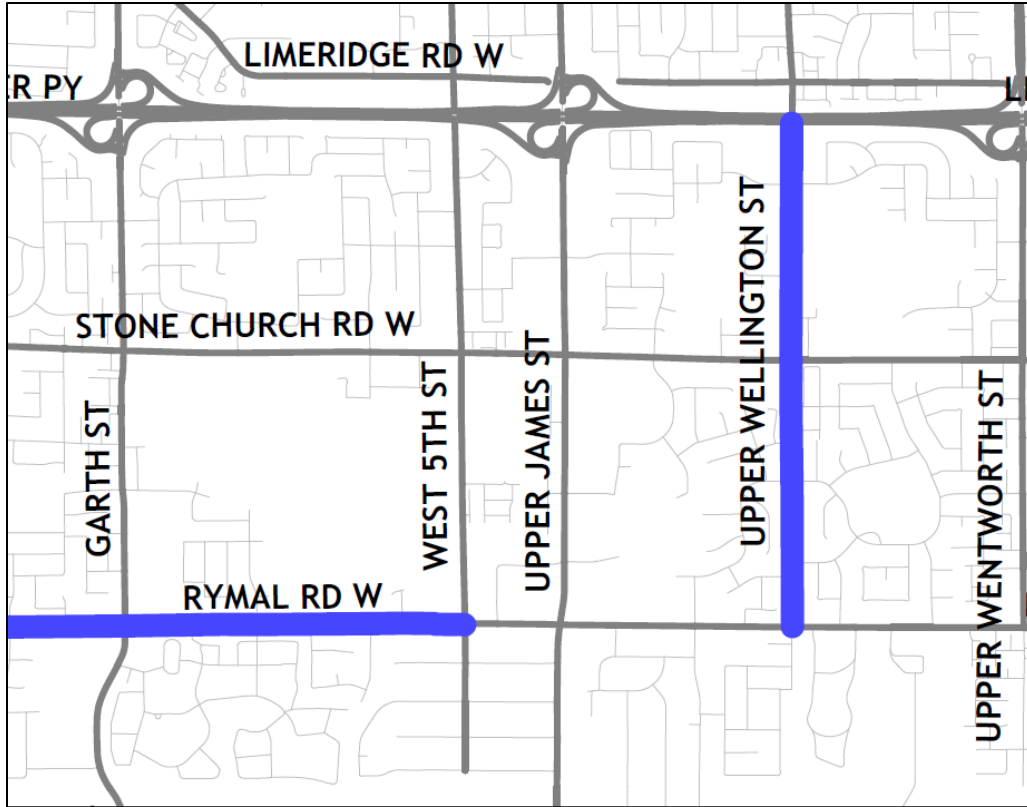
Map 1B – Planned Cycling Network – Urban



Except from: City of Hamilton, 2018 Transportation Master Plan Update, 2018



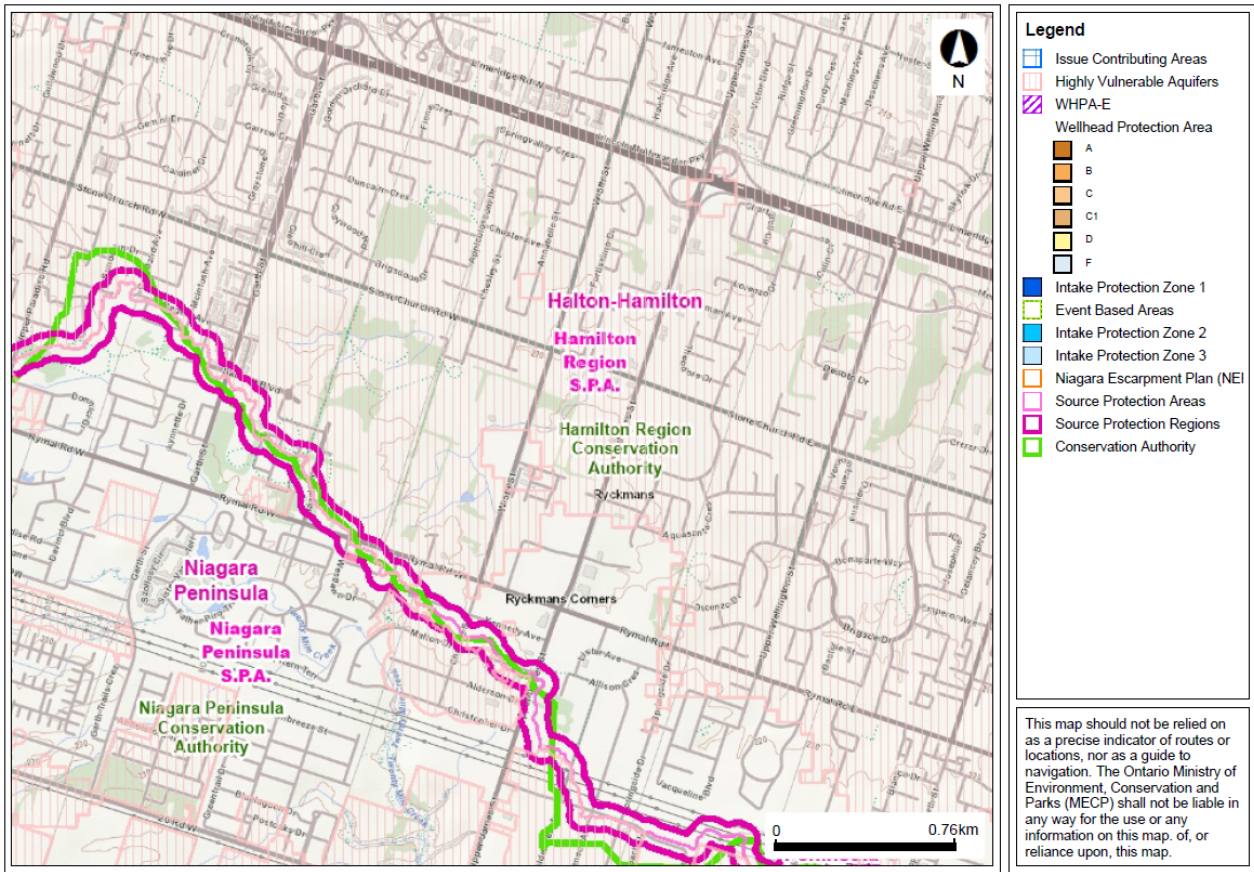
Map 3A – Road Network Improvements – Urban



Except from: City of Hamilton, 2018 Transportation Master Plan Update, 2018

Section C:Sourcewater Protection Figure

West 5th Street Corridor Sourcewater Protection Information Atlas



Legend

- Issue Contributing Areas
- Highly Vulnerable Aquifers
- WHPA-E
- Wellhead Protection Area**
 - A
 - B
 - C
 - C1
 - D
 - F
- Intake Protection Zone 1
- Event Based Areas
- Intake Protection Zone 2
- Intake Protection Zone 3
- Niagara Escarpment Plan (NEI)
- Source Protection Areas
- Source Protection Regions
- Conservation Authority

This map should not be relied on as a precise indicator of routes or locations, nor as a guide to navigation. The Ontario Ministry of Environment, Conservation and Parks (MECP) shall not be liable in any way for the use or any information on this map of, or reliance upon, this map.



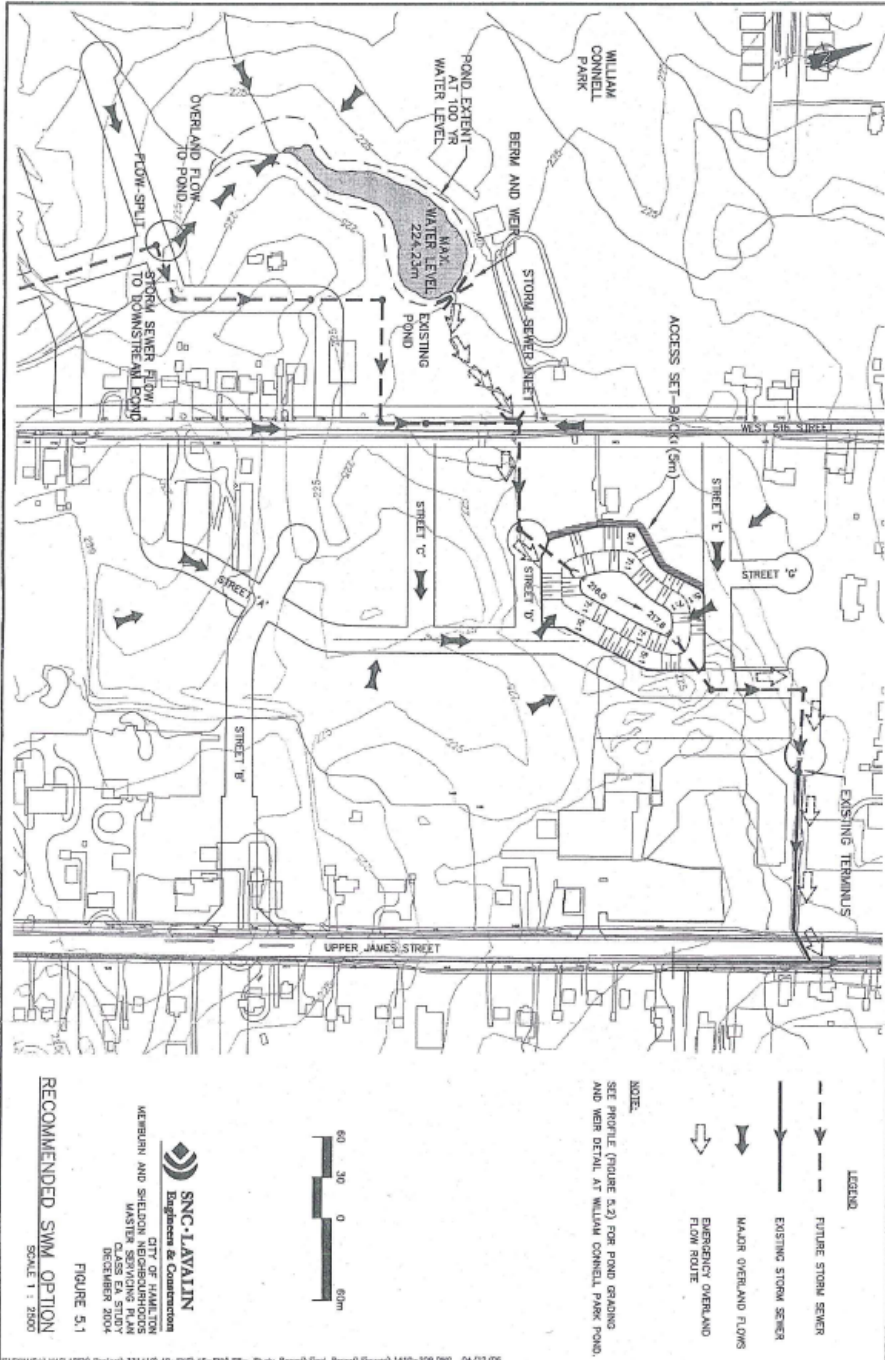
© King's Printer for Ontario and its licensors, 2025

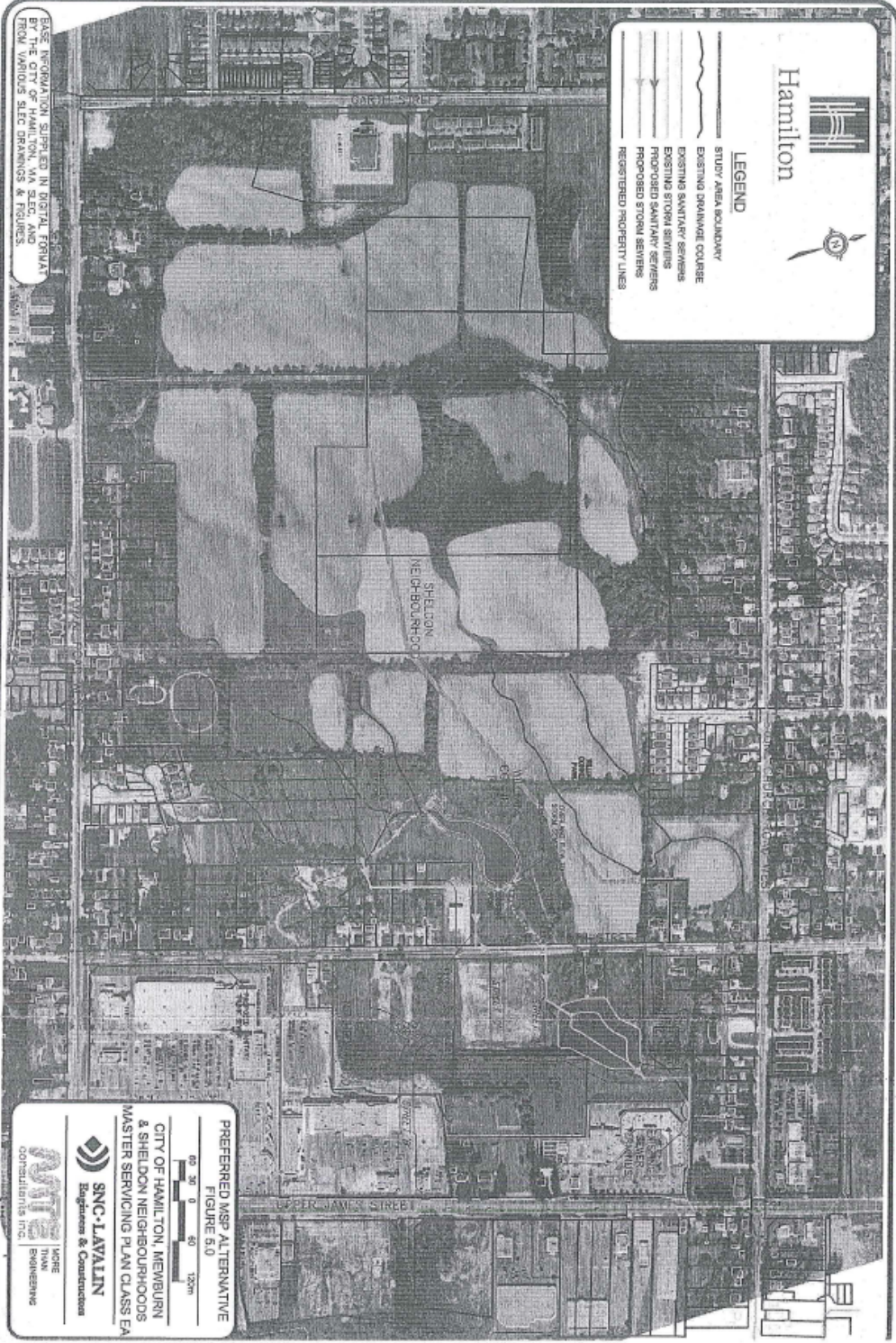
May Not be Reproduced without Permission.
THIS IS NOT A PLAN OF SURVEY.

Map Created: 2/14/2025
Map Center: 43.20893 N, -79.89625 W

Government of Ontario, Sourcewater Protection Information Atlas, Accessed January 25, 2025:
<https://www.ioapplications.lrc.gov.on.ca/SourceWaterProtection/index.html?viewer=SourceWaterProtection.SWPViewer&locale=en-CA>

Section D: Mewburn and Sheldon Neighbourhoods Master Servicing EA preferred plan figures (2004)





Hamilton

LEGEND

- STUDY AREA BOUNDARY
- EXISTING DRAINAGE COURSE
- EXISTING SANITARY SEWERS
- EXISTING STORM SEWERS
- PROPOSED SANITARY SEWERS
- PROPOSED STORM SEWERS
- REGISTERED PROPERTY LINES

BASE INFORMATION SUPPLIED IN DIGITAL FORMAT BY THE CITY OF HAMILTON, VIA SEC. AND FROM VARIOUS SPEC DRAWINGS & FIGURES.

PREFERRED MSP ALTERNATIVE
FIGURE 5.0

0 20 40 120m

SNC-LAVALIN
Engineering & Construction

CITY OF HAMILTON, MEMBURN & SHELTON NEIGHBOURHOODS MASTER SERVICING PLAN CLASS EA

MTE
LARGE SCALE ENGINEERING CONSULTANTS INC.