

City of Hamilton's

Waste Requirements for Design of New Developments and Collection

Waste Management / Public Works

June 2026

Table of Contents

1.0	Definitions.....	5
2.0	Introduction.....	11
2.1	Purpose	11
2.2	Municipal Waste Collection Services	11
2.3	Blue Box Recycling under Producer Responsibility	12
2.4	Eligible and Ineligible Properties	12
2.5	Application of the Waste Design Requirements	13
2.6	Applicable Legislation and City By-laws.....	16
2.7	Administration and Authority	16
2.8	Private Waste Collection Services	17
2.8.1	Waste Management Plan	17
2.8.2	Disclosure Requirements	18
2.9	Requirements for Planning Act Applications	18
2.10	Effective Date.....	19
3.0	Design Requirements	20
3.1	Design Requirements for all Developments.....	20
3.1.1	Waste Separation	20
3.1.2	Waste Storage.....	20
3.1.3	Access Routes	20
3.1.3.1	Roadways	20
3.1.3.2	Private Roads.....	21
3.1.3.3	Turnaround Areas.....	21
3.2	Design Requirements for Single Detached, Semi-Detached Dwelling and Street Townhouse Developments	22
3.2.1	Waste Storage Area	23
3.2.2	Waste Set-Out Area.....	23
3.3	Design Requirements for Multi-Plex Developments.....	24
3.3.1	Waste Storage Area	24
3.3.2	Waste Set-Out Area.....	24

3.4	Design Requirements for Multi-Residential Townhouse Developments	25
3.4.1	Class A Multi-Residential Townhouse	25
3.4.1.1	Waste Storage Area	25
3.4.1.2	Waste Set-Out Area	27
3.4.2	Class B Multi-Residential Townhouse.....	28
3.4.2.1	Waste Storage Area	28
3.4.2.2	In-Ground Containers.....	30
3.4.2.3	Loading Area	31
3.4.2.4	Staging Area.....	31
3.4.2.5	Set-Out Area	32
3.5	Design Requirements for Multi-Residential Buildings	33
3.5.1	Class A Multi-Residential Building	33
3.5.1.1	Waste Storage Area	33
3.5.1.2	Waste Set-Out Area	35
3.5.2	Class B Multi-Residential Buildings	36
3.5.2.1	Waste Separation.....	36
3.5.2.2	Waste Storage Area	36
3.5.2.3	Loading Area	38
3.5.2.4	Staging Area.....	38
3.5.2.5	Set-Out Area	39
3.5.3	Class C Multi-Residential Buildings.....	40
3.5.3.1	Waste Separation.....	40
3.5.3.2	Waste Storage Area	40
3.5.3.3	Loading Area	42
3.5.3.4	Staging Area.....	43
3.6	Design Requirements for Commercial Developments	43
3.6.1	Waste Storage Area	43
3.6.2	Waste Set-Out Area.....	44
3.7	Design Requirements for Other Eligible Properties.....	44
3.7.1	Waste Storage Area	45
3.7.2	Waste Set-Out Area.....	45

3.7.3	Loading Area	45
3.7.4	Staging Area.....	45
4.0	Serviceability Requirements for All Developments	46
4.1	Access Route Requirements.....	46
4.2	Property Requirements	46
4.3	Application for Municipal Waste Collection Service.....	47
	Appendices	48
	Appendix 1: Access Routes	48
	Appendix 2: T-Turnaround Requirements	51
	Appendix 3: Loading Areas and Staging Areas.....	54
	Appendix 4: Waste Collection Vehicle Dimensions.....	57
	Appendix 5: Waste Container Dimensions.....	60
	Appendix 6: In-Ground Container Dimensions	61

1.0 Definitions

“Access Route” means a designated Roadway used by a Waste Collection Vehicle to enter, exit and travel through a Development for the purpose of completing Waste Collection Services.

“Accessory Structure” when used to describe a use of land, building or structure, shall mean a use which is commonly incidental, subordinate and exclusively devoted to the main use or main building situated on the same lot.

“Additional Dwelling Unit” means a separate and self-contained Dwelling Unit located within or on the same lot as the principal dwelling.

“Agreement for On-Site Collection of Municipal Solid Waste” means a signed agreement, in a form set out in Schedule “F” of the Waste By-law, between the City and an Owner of property within the City, respecting the collection of Waste on private property, and may be amended from time to time by the General Manager, with approval as to form by the City Solicitor.

“Alleyway” means a narrow passage or lane located between or behind buildings, providing secondary access for pedestrians, vehicles, or services.

“Blue Box” means a container used for the collection of Recyclable Material, as described in Schedule “D” of the Waste By-law.

“Blue Cart” means a wheeled container used for the collection of Recyclable Material, as described in Schedule “D” of the Waste By-law.

“Bulk Item” means a household Waste item that is too large or heavy for regular Collection Services, and which is not Recyclable Materials, Organic Materials, Yard Waste, or prohibited collection Waste.

“City” means the municipality of the City of Hamilton or the geographic area of the City of Hamilton, as the context requires.

“Commercial Property” means a property used mainly for commercial purposes, excluding commercial properties with four or more floors and/or shopping centres, but, notwithstanding the foregoing, shall include places of worship but only to the extent such place of worship is being used by a religious organization for public worship or another ecclesiastical function, but, for clarity, does not include any ancillary uses, such as a day nursery or educational or recreational uses.

“Compactor” means a machine or mechanism used to reduce the size and volume of Garbage.

“Contractor” means a private company that is under contract to the City to carry out Waste Collection Services on behalf of the City.

“Curbside Collection Service” means Waste Collection Service wherein Waste is collected at the edge of the travelled portion of the Street or Private Road abutting the property receiving Waste Collection Service.

“Developer” means a person, corporation, consulting firm or any party involved in the proposal, and construction of a new Development.

“Development” means a change in the use of any land, building, or structure for any purpose, and shall include the carrying out of any building, engineering construction or other operation in, on, over or under land, or the construction, addition or alteration of any building or structure.

“Dwelling Unit” means a room or suite of rooms used or intended to be used by one or more persons living together as one household, in which cooking and sanitary facilities are provided for the exclusive use of the household, and to which an independent entrance is provided from outside the building or from a common interior hallway, vestibule or stairway.

“Front-End Container Collection Service” means Waste Collection Service where Waste is collected in a Front-End Container by a front-end loading Waste Collection Vehicle on private property.

“Front-End Container” means a metal or plastic container with a secured lid that is collected by a collection vehicle designed to collect Front-End Containers, as illustrated in Appendix 5: Waste Container Dimensions. Front-End Container Collection Service is provided for Garbage and Organic Material.

“Front” means the side of a Building or Dwelling Unit having its primary façade, entrance, or address facing a specified Roadway or Private Road.

“Garbage” means Waste other than Recyclable Materials, Organic Materials, Yard Waste, Bulk Items, and prohibited collection Waste described in Schedule “B” to By-Law 20-221.

“Garbage Cart” means a wheeled container used for the collection of Garbage described in Schedule “D” of the Waste By-law.

“Garbage Container” means a container used for the collection of Garbage from a Single-Family Residential Property, Multi-Residential Townhouse, Multi-Residential

Building or Commercial Property described in Schedule “D” of the Waste By-law but does not include a Garbage Cart.

“Green Cart” means a wheeled container used for the collection of Organic Material described in Schedule “D” of the Waste By-law.

“Individual Curbside Collection Service” means Waste Collection Service where Waste is set out by a single Dwelling Unit at the edge of the travelled portion of the road abutting the property receiving Waste Collection Service, and where the Waste is not combined with the Waste from any other Dwelling Unit.

“Industrial Property” means property designated in an official plan for clusters of business and economic activities including, but not limited to, manufacturing, warehousing, offices, and associated retail and ancillary facilities.

“In-Ground Container” means a container based on the specifications in Appendix 6: In-Ground Container Dimensions in which a receptacle for Waste is located above-ground with a storage component that extends underground.

“Institutional Property” means a property designated as educational, health, retirement residence and other institutional uses as described by Municipal Property Assessment Corporation (MPAC). They may include government owned and operated facilities or be privately owned and operated.

“Loading Area” means a designated area located on private property that provides adequate access and space for a Waste Collection Vehicle to safely collect Waste from Front-End Containers.

“Lodging House” means a house or other building or portion thereof in which four or more persons are or are intended to be harboured, received or lodged for hire, where lodging rooms are without kitchen facilities for the exclusive use of the Occupants and where each Occupant does not have access to all of the habitable areas in the building, but does not include a hotel, hospital, nursing home, home for the young or the aged or institution if the hotel, hospital, home or institution, is licensed, approved or supervised under a general or special Act other than the Municipal Act, 2001, and does not include student residences or convents.

“Mixed-Use Development” means a Development or area made up of mixed land uses either in the same building or in separate buildings. The mix of land uses may include commercial, industrial or institutional uses but must include residential units. Mixed-Use Developments may have uses that are eligible for Waste Collection Service and uses that are ineligible for Waste Collection Service.

“Multi-Plex” means a property containing two to five Dwelling Units within a single building, or within one or more buildings located within or on the same lot, including one or more Additional Dwelling Units, but does not include a Semi-Detached Dwelling, Street Townhouse, Multi-Residential Townhouse, or Multi-Residential Building, and which fronts a Roadway or a Private Road.

“Multi-Residential Building” means a property used mainly for residential purposes which contains six or more Dwelling Units, and does not include institutional facilities, Residential Care Facilities, Lodging Houses, student residence, or a hotel, hospital, nursing home, home for the young or the aged or institution if the facility, house, residence, hotel, hospital, home or institution, as applicable, is licensed, approved or supervised under a general or special Act other than the Municipal Act, 2001.

“Multi-Residential Townhouse” means a townhouse Development with six or more Dwelling Units, in which some or all the townhouses do not Front a Roadway and share a single parcel of land and so receive Shared Collection Services. As an example, Multi-Residential Townhouses include stacked, back-to-back, and maisonette townhouses.

“Municipal Waste Collection Service(s)” means either Individual Curbside Collection Service, Shared Collection Service or Front-End Container Collection Service delivered by the City, or its Contractor, to properties enrolled in the service.

“Occupant” means an Owner, lessee, tenant or any other person inhabiting a property.

“Organic Material” means Waste items or materials referred to in Schedule “A” of the Waste By-law.

“Owner” means any person(s) or corporation with ownership over a property or is either in charge of or in control of a property on behalf of the Owner.

“Planning Act Application” means an application submitted to the City of Hamilton under the Planning Act for the purpose of obtaining planning approvals for the Development, redevelopment, or change in use of a property, including (where applicable) applications such as an Official Plan Amendment, Zoning By-law Amendment, Site Plan Approval, Draft Plan of Subdivision, Draft Plan of Condominium, Consent, Part Lot Control, and Minor Variance.

“Private Road” means a paved road or thoroughfare which is not assumed by the City, and which is owned and maintained by the Owner of a property.

“Private Waste Collection Services” means services provided by persons or corporation contracted by the Owner of a property for the collection of Waste.

“Recyclable Material” means recyclable containers material and/or recyclable fibres material, as the context requires; Waste items or materials referred to as Recyclable Materials in Schedule “A” of the Waste By-law.

“Redevelopment” means any change to an existing building or property that alters the applicable Waste collection service type, storage, set-out, access, or collection requirements.

“Residential Care Facility” means a “Residential Care Facility” as it is defined in the City’s Zoning By-law of the City of Hamilton, By-law No. 05-200, as may be amended, restated, superseded, or replaced from time to time.

“Roadway” means the portion of a public road or highway intended for use by vehicular traffic.

“Semi-Detached Dwelling” means a building divided vertically into two Dwelling Units, by a common wall which prevents internal access between Semi-Detached Dwelling Units and extends from the base of the foundation to the roof line and for a horizontal distance of not less than 35 per cent of the horizontal depth of the building. Each Semi-Detached Dwelling Unit shall be designed to be located on a separate lot with frontage on a street.

“Set-Out Area” means an area adjacent to the Roadway designated for the placement of Waste for Curbside Collection Service.

“Shared Collection Service” means Waste Collection Services provided by the City that consist of Waste generated from all Dwelling Units on a property being stored and set out for collection in a combined manner, using Front-End Containers and/or Garbage Carts, Blue Carts, and Green Carts.

“Single Detached Dwelling” means a separate building containing one Dwelling Unit.

“Single-Family Residential Property” means a property used mainly for residential purposes containing five or fewer Dwelling Units, including Lodging Houses and Residential Care Facilities in residential neighbourhoods.

“Staging Area” means the area adjacent to the Loading Area of a property receiving Front-End Container Collection Services, which is used to manipulate and move Front-End Containers so that their contents can be loaded into the Waste Collection Vehicle.

“Storage Area” means the area of a Development where Waste containers and material is stored in between collection days.

“Storey” shall mean that portion of a building or structure, other than a cellar, included between the surface of any floor and the surface of the floor, roof deck or ridge next above it, except an attic Storey.

“Street Townhouse” means a building divided vertically into three or more Dwelling Units, by common walls which prevent internal access between units and extend from the base of the foundation to the roof line and for a horizontal distance of not less than 35 per cent of the horizontal depth of the building but shall not include a Multi-Residential Townhouse. Street Townhouses may be situated on individual lots or on a shared lot, provided each unit has direct access to and frontage on a Roadway or Private Road.

“Turning Radius” means the minimum circular space required for a Waste Collection Vehicle to complete a turn or turnaround in continuous forward motion without reversing or encroaching beyond the driving surface.

“Waste” means Garbage, Organic Material and Recyclable Material collectively.

“Waste By-law” means the City of Hamilton By-law 20-221, Solid Waste Management By-law as may be amended.

“Waste Collection Vehicle” means a vehicle used by the City, or its Contractor, to carry out Waste Collection Service operations.

“Waste Design Requirements” means the City of Hamilton Requirements for Design of New Developments and Collection.

“Waste Diversion Program” means a source separation program, where at minimum, Recyclable Material and Organic Material are separated from Garbage by Occupants and Owners but may also include the separation of Yard Waste.

“Yard Waste” means material referred to as Yard Waste in Schedule “A” of the Waste By-law.

“Yard Waste Container” refers to a container used for the collection of Yard Waste described in Schedule “D” of the Waste By-law.

2.0 Introduction

2.1 Purpose

The City of Hamilton Waste Requirements for Design of New Developments and Collection (“the Waste Design Requirements”) establish the requirements that must be met in the design of new Developments, Redevelopments, and requests for Municipal Waste Collection Services, to ensure safe, efficient, and equitable provision of Municipal Waste Collection Services.

The Waste Design Requirements establish design principles intended to ensure that Developments:

- facilitate the safe and efficient movement of Waste Collection Vehicles; and
- provide equitable access for all Occupants to City-provided Garbage disposal and Waste Diversion Programs applicable to the Development type, with Waste Diversion Programs meeting or exceeding the level of accessibility provided for Garbage disposal.

In all cases, Developers and Owners should make best efforts to support these principles, helping ensure that Municipal Waste Collection Services operate effectively, promote equitable access to Waste Diversion Programs, enhance operational efficiency, and contribute to the fair and responsible use of municipal services available to Occupants.

2.2 Municipal Waste Collection Services

Municipal Waste Collection Services include the collection of Garbage, Organic Material, Yard Waste, and Bulk Items.

The City enforces a limit on the quantity of Garbage and Bulk Items that are collected from each property type, in accordance with the Waste By-law. If a property generates Waste in excess of the permitted limits, it is the responsibility of the Owner to secure other means of disposal at their own expense.

Municipal Waste Collection Service is provided as an all-or-nothing service. Properties must be designed and constructed to support and facilitate participation in all applicable Waste Diversion Programs and Municipal Waste Collection Services for all Waste streams associated with the Development type. Where a property is not designed and

constructed to support all applicable Waste Diversion Programs and Municipal Waste Collection Services, the property will not be eligible to receive any Municipal Waste Collection Services.

2.3 Blue Box Recycling under Producer Responsibility

As of April 1, 2025, Hamilton's residential Blue Box recycling program transitioned to a producer responsibility framework under Ontario's Resource Recovery and Circular Economy Act, 2016 and Ontario Regulation 391/21 (Blue Box). Under the provincial framework, responsibility for the operation and delivery of Blue Box recycling services to eligible sources is established in accordance with Ontario Regulation 391/21, as amended from time to time.

Notwithstanding the transition of operational responsibility for recycling services, all Developments must continue to be designed and constructed to support Waste Diversion Programs, including recycling. This includes providing adequate space, access, storage, and set-out areas to enable Occupants to participate in recycling diversion consistent with the applicable Development type.

For clarity, a Development will not be considered compliant with the Waste Design Requirements if it is designed in a manner that restricts or inhibits recycling diversion.

2.4 Eligible and Ineligible Properties

Properties eligible to receive Municipal Waste Collection Services under the Waste By-law include:

- Single-Family Residential Properties;
- Multi-Residential Properties;
- Commercial Properties;
- Other properties through an agreement with the City; and
- Other properties deemed eligible by the General Manager.

Notwithstanding that a property may be identified as eligible to receive Municipal Waste Collection Services under the Waste By-law, services will only be provided where the property is designed and constructed in accordance with the Waste Design Requirements and has been deemed serviceable through the applicable Planning Act

Application and approval process or through the Municipal Waste Collection Service application process.

Property types not listed above are considered ineligible for Municipal Waste Collection Services. Properties that are ineligible for Municipal Waste Collection Services shall be responsible for arranging Private Waste Collection Service and shall remain subject to the City's Waste By-law, Property Standards By-law, and all other applicable municipal, provincial, and federal legislation and regulations.

2.5 Application of the Waste Design Requirements

This section explains how to determine which requirements apply to a proposed Development.

Table 1 identifies the applicable requirements based on the Development type and eligible Waste collection method. Section 3.1 applies to all Developments, with any additional requirements applying as identified in Table 1.

Where a Development consists of a single dwelling or building type, the Municipal Waste Collection Service provided by the City shall be consistent across the entire Development. For example, where a Development is comprised entirely of Street Townhouses, all Dwelling Units within the Development shall receive Individual Curbside Waste Collection Service.

Where a Development includes multiple dwelling or building types, defined as a Mixed-Use Development, each dwelling or building type shall be subject to the applicable Waste Design Requirements and Municipal Waste Collection Service associated with that Development type.

Table 1: Applicable Sections for Development Types

Development Type	Description	Eligible Collection Method	Applicable Section
Single Detached, Semi-Detached Dwelling, Street Townhouse	Dwelling Units that Front a Roadway or Private Road, including those located on individual lots or within a shared lot.	Individual Curbside Collection Service of Garbage, Organic Material, Bulk and Yard Waste	3.2

Development Type	Description	Eligible Collection Method	Applicable Section
Multi-Plex, Additional Dwelling Unit	Properties containing between two and five Dwelling Units that Front a Roadway or Private Road	Individual Curbside Waste Collection Service of Garbage, Organic Material, Bulk and Yard Waste	3.3
Class A Multi-Residential Townhouse	Properties containing a minimum of 6 and a maximum of 30 Dwelling Units, where any Dwelling Unit does not Front a Roadway or Private Road. Includes maisonette and stacked townhouses	Shared Curbside Waste Collection Service of Garbage, Organic Material, Bulk and Yard Waste	3.4.1
Class B Multi-Residential Townhouse	Properties containing over 30 Dwelling Units, where any Dwelling Unit does not Front a Roadway or Private Road. Includes maisonette and stacked townhouses	Front-End Container Collection Service of Garbage and Shared Curbside Collection Service of Organic Material, Bulk and Yard Waste	3.4.2
Class A Multi-Residential Building	Buildings containing a minimum of 6 and a maximum of 30 Dwelling Units	Shared Curbside Waste Collection Service of Garbage, Organic Material, Bulk and Yard Waste	3.5.1
Class B Multi Residential Building	Buildings under 7 Storeys and containing more than 30 Dwelling Units	Front-End Container Collection Service of Garbage and Shared Curbside Collection Service of Organic Material, Bulk and Yard Waste	3.5.2

Development Type	Description	Eligible Collection Method	Applicable Section
Class C Multi-Residential Building	Buildings over 6 Storeys and containing more than 30 Dwelling Units	Front-End Container Collection Service of Garbage and Organic Material and Shared Curbside Collection Service of Bulk and Yard Waste	0
Commercial	Properties used mainly for Commercial Purposes	Curbside Collection Service of Garbage and Organic Material	3.6
Place of Worship	Properties serving ecclesiastical functions	Curbside Collection Service of Garbage and Organic Material	3.6
Institutional	Schools, student residences, day cares, long-term care facilities, retirement homes and other institutional-use properties	Private Waste Collection Service	-
Industrial	Properties containing manufacturing, processing, warehousing, or similar industrial uses, as permitted by the City of Hamilton Zoning By-law No. 05-200, as amended	Private Waste Collection Service	-
Municipal	Properties owned and/or operated by the City of Hamilton	Curbside and/or Front-End Container Collection Service of Garbage and Organic Material	3.7

2.6 Applicable Legislation and City By-laws

The Waste Design Requirements are to be used in conjunction with, and not as a replacement for, applicable City by-laws and provincial legislation, as amended from time to time, including:

City of Hamilton By-laws

- City of Hamilton Solid Waste Management By-law No. 20-221, as amended.
- City of Hamilton Zoning By-law No. 05-200, as amended.
- City of Hamilton By-law No. 24-186 – Consolidated Site Plan Control By-laws.
- City of Hamilton, Property Standards By-law No. 10-221 (2010), as amended.

Provincial Legislation and Regulations

- Building Code Act, 1992 and Ontario Building Code, O. Reg. 332/12.
- Fire Protection and Prevention Act, 1997 and Ontario Fire Code, O. Reg. 213/07.
- Environmental Assessment Act, R.S.O. 1990, c. E. 18 (where applicable).
- Environmental Protection Act, R.S.O. 1990, c. E. 19.
- Municipal Act, 2001, S.O. 2001, c. 25.
- Ontario Regulation 103/94 (Industrial, Commercial and Institutional Source Separation Programs).
- Ontario Regulation 391/21 (Blue Box).
- Planning Act, R.S.O. 1990, c. P. 13.
- Resource Recovery and Circular Economy Act, 2016.

Where a conflict exists between the Waste Design Requirements and any applicable legislation or by-law, the legislation or by-law shall prevail. It is the responsibility of the applicant and/or Owner to comply with the most current version of all applicable legislation or, in the event that legislation may be repealed and replaced, any new and applicable legislation.

2.7 Administration and Authority

The Waste Management Division of the Public Works Department administers these Waste Design Requirements and provides comments on Planning Act Applications and requests for Municipal Waste Collection Services.

The Waste Management Division may interpret and apply the Waste Design Requirements with reasonable flexibility on a case-by-case basis where, in the City's opinion, strict application would be impractical or would conflict with other applicable

City objectives, provided that the purpose of the Waste Design Requirements and safe, efficient Waste servicing can still be achieved.

Without limiting the generality of the foregoing, flexibility may be considered where strict application would result in conflict with:

- the existing character of the street or surrounding context;
- applicable Urban Design or density objectives;
- Cultural Heritage conservation;
- The Urban Forestry Strategy; or
- other City land use planning objectives.

The City's determination regarding serviceability and the method of collection for an eligible property shall be made in accordance with the Waste By-law and the Waste Design Requirements. Any proposed changes to the location of Waste Collection Services, method of collection, waste storage configuration, site layout, or changes in property classification, use or the number of residential Dwelling Units that may affect Waste servicing shall be reviewed by the Waste Management Division to confirm continued compliance with the requirements.

2.8 Private Waste Collection Services

Municipal Waste Collection Services are the standard service model for eligible Developments. Where an eligible Development does not meet the applicable Waste Design Requirements, Municipal Waste Collection Services will not be provided, and the Owner shall be responsible for arranging Private Waste Collection Services at their own cost. This section applies only to Developments that are otherwise eligible to receive Municipal Waste Collection Services.

2.8.1 Waste Management Plan

Where an eligible Development proposes to rely on, or is required to rely on, Private Waste Collection Services, the City requests that the Developer submit a Waste Management Plan for review. The Waste Management Plan may be submitted in any reasonable format and need not be a standalone or formal report, provided the required information is clear, complete, and comprehensively conveyed.

The Waste Management Plan should identify the Waste-related design considerations for the Development and outline the proposed approach to delivering Private Waste Collection Services.

At a minimum, the City requests that the Waste Management Plan include:

- The size and location of all internal and external Waste Storage Areas.
- The proposed Waste collection method(s).
- The anticipated collection frequency.
- The system for source-separating applicable Waste streams.

2.8.2 Disclosure Requirements

Where an eligible Development proposes to rely on, or is required to rely on, Private Waste Collection Services, the Developer shall clearly disclose to all prospective purchasers that Waste collection services will be provided privately and at a cost to the Owner.

Disclosure shall be included, at minimum, in:

- Site Plan notes and conditions (both conditional and final).
- All Agreements of Purchase and Sale for Dwelling Units.
- All Condominium Declarations, where applicable.

Suggested Wording:

“This Development has not been designed in accordance with the City of Hamilton’s Waste Requirements for Design of New Developments and Collection and is therefore ineligible for Municipal Waste Collection Services. All Waste collection shall be provided privately at the Owner’s expense unless the Development is brought into compliance with the Waste Design Requirements to the satisfaction of the City.”

2.9 Requirements for Planning Act Applications

Compliance with the Waste Design Requirements is evaluated as part of the City’s review of Planning Act Applications for all eligible Developments. All new eligible Developments must be designed and configured in accordance with the Waste Design Requirements to receive Municipal Waste Collection Services.

Developments that are not eligible to receive Municipal Waste Collection Services must be designed in compliance with applicable by-laws and must arrange for Private Waste Collection Services.

To support the review of a Planning Act Application, applicants may be required to provide information demonstrating compliance with the Waste Design Requirements; where applicable, such information shall include, at a minimum:

- A description of the proposed land use(s).
- The number of Dwelling Units and Storeys for each building.
- Scaled drawings illustrating the proposed site layout.
- Dimensions and Turning Radii of Roadways, Private Roads, and related infrastructure.
- On-site vehicle circulation, including turning templates demonstrating the movement of Waste Collection Vehicles through the Development, including entering and exiting Loading Areas.
- Vertical clearances for overhead obstructions along Access Routes and Loading Areas.
- The location and dimensions of Storage Areas, Waste containers, Set-Out Areas, Loading Areas and Staging Areas.
- Storage Area layouts, including the number and type of Waste containers.
- Identification of any proposed Garbage Compactor systems.
- Routes illustrating the movement of Front-End Containers between Storage Areas and Loading Areas.
- The location of proposed snow storage areas, demonstrating that snow storage will not obstruct Access Routes, Turnaround Areas, or Waste Collection Vehicle movement.
- The location and type of access-route safety measures (e.g. signage, pavement markings, mirrors) where required to support safe Waste Collection Vehicle operations.

Where required, additional information or revisions may be requested to confirm compliance with the Waste Design Requirements.

2.10 Effective Date

The 2026 Waste Design Requirements will take effect on the day they are endorsed by Hamilton City Council (the “Effective Date”).

Site Plan Control applications for which Conditional Site Plan approval has been issued prior to the Effective Date shall not be subject to the 2026 Waste Design Requirements, unless the proposal is revised in a manner that results in significant changes to the applicable Development type, Municipal Waste Collection Service type, or the number of residential Dwelling Units.

Planning Act Applications and requests for Municipal Waste Collection Services received on or after the Effective Date shall be required to meet the 2026 Waste Design Requirements.

3.0 Design Requirements

3.1 Design Requirements for all Developments

3.1.1 Waste Separation

All new Developments that are eligible for Municipal Waste Collection Services must be designed to accommodate four-stream source separation, including container Recyclable Material, fibre Recyclable Material, Organic Material, and Garbage.

3.1.2 Waste Storage

Waste Storage Areas shall be designed to support safe, sanitary, and functional storage and handling of Waste between collection days, including adequate space for source separation, safe access for users, pest prevention measures, adequate lighting, and provision for Waste management signage and program materials.

To support these outcomes and to facilitate maintenance consistent with the City's Property Standards By-law, Waste Storage Areas must include the following features:

- Drainage designed to prevent ponding.
- A water connection (e.g., hose bib / hose tap) to support cleaning.
- Ventilation appropriate to the use of the space.
- Rodent/pest-resistant construction (e.g., sealing at openings, durable cleanable surfaces).
- Electrical outlets suitable for routine operations and maintenance.

Waste Storage Areas and related systems shall comply with the Ontario Building Code and Ontario Fire Code, and with all other applicable City by-laws and policies, including the Rural Hamilton Official Plan (Section D.2.3, where applicable) and the City's Zoning By-law requirements related to source water protection/vulnerable areas, including prohibited uses in the Rural Zones (Section 12), as applicable.

3.1.3 Access Routes

3.1.3.1 Roadways

- a) Where a new Development is proposed to be accessed by a Roadway, the design of such Access Routes must be in accordance with the City's "Comprehensive Development Guidelines and Financial Policies Manual" and all other applicable standards generated by the Transportation Planning and Parking Division of the City.
- b) Developments will not be serviced by Alleyways that are not assumed and/or maintained by the City.

3.1.3.2 Private Roads

- a) Where Developments are proposed to be accessed by one or more Private Roads, the Access Route shall be designed to allow for continuous forward movement of Waste Collection Vehicles throughout the Development, including the radius of a cul-de-sac turning circle. Refer to Appendix 1: Access Routes for examples.
- b) The only exception to having continuous forward motion is when the Waste Collection Vehicle is entering or exiting an acceptable Loading Area. Refer to Section 3.4.2.3 for detailed requirements.
- c) Minimum requirements for private Access Routes are as follows:
 - i. Waste Collection Vehicles shall be able to enter and exit the Development in a forward motion.
 - ii. Two-way Access Routes shall have a minimum width of 6.0 m and one-way Access Routes shall have a minimum width of 3.0 m.
 - iii. Changes in direction shall provide Turning Radii sufficient to accommodate the City's Waste Collection Vehicles, and in any case shall not be less than 12 metres measured from the centreline of the curve. Refer to Appendix 4: Waste Collection Vehicle Dimensions for detailed specifications.
 - iv. Maximum grade shall not exceed 8 per cent.
 - v. Minimum overhead clearance shall be 4.4 m along the entire Access Route.
 - vi. Any part of the Access Route which is suspended must be able support a minimum overall load of 35,000 kg, and a 6,000 kg point load.

3.1.3.3 Turnaround Areas

- a) If, in the opinion of the City, continuous forward motion is not possible due to site constraints, Waste Collection Vehicles will be permitted to make a single three-

point turn using an approved turnaround area consistent with Appendix 2: T-Turnaround Requirements.

- b) Use of a turnaround area will only be permitted within Developments that meet all of the following criteria:
- i. Reversing of Waste Collection Vehicles is limited to the turnaround area only.
 - ii. Reversing within the turnaround area shall be limited to no more than one truck length.
 - iii. Collection of Waste from all Dwelling Units can occur by the Waste Collection Vehicle making no more than one three-point turn.
 - iv. The maximum length of the hammerhead portion that the Waste Collection Vehicle will access is 34 metres. This length is intended to allow the Waste Collection Vehicle to enter, turn, straighten out, reverse no more than one truck length, and turn again to exit the Turnaround Area in a forward motion.
 - v. Dwelling Units and driveways may Front onto a turnaround area, and parking may be located adjacent to a turnaround area, provided that required vehicle clearances are maintained and Waste Collection Vehicle movements are not obstructed.
 - vi. Parking, stopping, standing, and snow storage are not permitted within any portion of the Turnaround Area or Access Route required for vehicle travel, turning, or reversing.
 - vii. Waste Collection Vehicle operations within the Turnaround Area shall not impede or conflict with designated pedestrian pathways or pedestrian-oriented amenities.
 - viii. Safety measures required to support safe Waste Collection Vehicle operations are incorporated, which may include “No Parking” signage, pavement markings, mirrors at constrained sightlines, and other measures, as determined by the City.
- c) Dead-ends not equipped with an acceptable turnaround design will only be permitted for temporary situations in accordance with the City’s “Comprehensive Development Guidelines and Financial Policies Manual” and all other applicable City transportation standards.

3.2 Design Requirements for Single Detached, Semi-Detached Dwelling and Street Townhouse Developments

This section applies to Dwelling Units that Front a Roadway or Private Road, including those located on individual lots or within a shared lot, which are eligible to receive Individual Curbside Waste Collection Services of Garbage, Organic Material, Bulk and Yard Waste.

3.2.1 Waste Storage Area

- a) Each Dwelling Unit shall be provided with a minimum of 2.5 square metres of Waste Storage Area to store Waste between collection days.
- b) The Waste Storage Area shall:
 - i. Be exclusive of living space.
 - ii. Be fully enclosed.
 - iii. Be of sufficient size and configuration to accommodate, at a minimum, two Blue Boxes, one Green Cart, one Garbage Container, and one Yard Waste Container.
- c) The Waste Storage Area shall not be located within the front yard and shall not be visible from a Roadway. An attached or detached garage serving the Dwelling Unit is considered an acceptable Waste Storage Area.

3.2.2 Waste Set-Out Area

- a) Each Dwelling Unit shall be provided with a minimum of 2.5 square metres for a Waste Set-Out Area. Waste shall be set out in front of each Dwelling Unit as close to the edge of the Roadway or Private Road as possible without being placed on the sidewalk, where present, or on the surface of the Roadway or Private Road. Examples of acceptable Set-Out Areas include:
 - i. On the grassed area adjacent to the Roadway or Private Road, where provided; or
 - ii. On private property immediately adjacent to the curb or sidewalk.
- b) Set-Out Areas must not interfere with pedestrians, bike traffic, public trees or any public services.
- c) If the property backs onto a Private Road and receives Waste Collection Service from said Private Road, then the Dwelling Unit's address must be clearly identifiable from the Private Road.

3.3 Design Requirements for Multi-Plex Developments

This section applies to properties containing two to five Dwelling Units within a single building, or within one or more buildings located on the same lot, including one or more Additional Dwelling Units, that Front a Roadway or Private Road, and are eligible to receive Individual Curbside Waste Collection Services of Garbage, Organic Material, Bulk and Yard Waste.

3.3.1 Waste Storage Area

- a) The property shall be provided with a minimum of 2.5 square metres of shared Waste Storage Area to store Waste for all Dwelling Units between collection days.
- b) The Waste Storage Area shall:
 - i. Be exclusive of living space.
 - ii. Be fully enclosed.
 - iii. Be of sufficient size and configuration to accommodate, at a minimum, two Blue Boxes for every three Dwelling Units, one Green Cart for every three Dwelling Units, one Garbage Container for each Dwelling Unit, and one Yard Waste Container for the property.
- c) Access to the Waste Storage Area may be internal or external to the building, but must be equally convenient for all Occupants, and all Waste diversion streams must be equally accessible.
- d) The Waste Storage Area shall not be located within the front yard and shall not be visible from a Roadway. An attached or detached garage serving the Dwelling Units is considered an acceptable Waste Storage Area.

3.3.2 Waste Set-Out Area

- a) Each Dwelling Unit shall be permitted to set out Waste individually in accordance with the Waste By-law. The property shall be provided with a minimum Waste Set-Out Area of:
 - i. 2.5 square metres for properties containing up to three Dwelling Units; and
 - ii. 4.0 square metres for properties containing up to five Dwelling Units.

- b) Waste shall be set out in front of the property as close to the edge of the Roadway or Private Road as possible without being placed on the sidewalk, where present, or on the surface of the Roadway or Private Road. Examples of acceptable Set-Out Areas include:
- on the grassed area adjacent to the Roadway or Private Road, where provided; or
 - on private property immediately adjacent to the curb or sidewalk.
- c) Set-Out Areas must not interfere with pedestrians, bike traffic, public trees or any public services.
- d) If the property backs onto a Private Road and receives Waste Collection Service from said Private Road, then the Dwelling Unit's address must be clearly identifiable from the Private Road.

3.4 Design Requirements for Multi-Residential Townhouse Developments

3.4.1 Class A Multi-Residential Townhouse

Class A Multi-Residential Townhouse Developments are properties containing a minimum of six and a maximum of 30 townhouses, where one or more Dwelling Units do not Front a Roadway or Private Road and includes maisonette and stacked townhouses. Class A Multi-Residential Townhouses are eligible to receive Shared Curbside Collection Service of Garbage, Organic Material, Bulk and Yard Waste.

3.4.1.1 Waste Storage Area

- a) The property shall be provided with one or more shared Waste Storage Areas having a minimum area sufficient to store Waste between collection days for all Dwelling Units. Refer to Appendix 5: Waste Container Dimensions for detailed illustrations.
- b) The Waste Storage Area(s) shall:
- i. Be exclusive of living space.
 - ii. Be fully enclosed.
 - iii. Have a minimum overhead clearance of 2.5 metres.

- iv. Provide equal accessibility to all Waste streams.
- v. Be convenient for all Dwelling Units, such that no Occupant is required to travel more than 100 metres round trip to reach a Waste Storage Area.

c) The Waste Storage Area may be provided as:

- i. a dedicated room attached to the building(s);
- ii. a dedicated room within a parking structure; or
- iii. an Accessory Structure.

d) The required number and type of Waste carts, and the minimum Waste Storage Area, shall be determined in accordance with Table 2, Table 3 and Table 4.

Table 2: Cart requirements per number of Dwelling Units – Class A Multi-Residential Townhouse

Dwelling Units	Maximum Number of Garbage Carts	Minimum Number of Blue Carts	Minimum Number of Green Carts
6	2	4	2
7 to 9	3	4	2
10 to 12	4	4	2
13 to 15	5	4	2
16 to 17	6	6	3
18 to 20	7	6	3
21 to 23	8	6	3
24 to 25	9	6	3
26 to 28	10	6	3
29 to 30	11	6	3

Table 3: Minimum Waste Storage Area requirements per cart – Class A Multi-Residential Townhouse

Cart Type	Cart Size	Minimum Waste Storage Area Required
Garbage Cart	360 L	1.1 m ²
Blue Cart	360 L	1.1 m ²
Green Cart	120 L	0.53 m ²

Table 4: Minimum Bulk Waste Storage Area requirement – Class A Multi-Residential Townhouse

Waste Type	Minimum Storage Area Required
Bulk Waste	6 m ²

3.4.1.2 Waste Set-Out Area

- a) The property shall be provided with a curbside Set-Out Area of sufficient size to accommodate all carts and Bulk Items set out for collection.
- b) The minimum size of the Set-Out Area shall be determined in accordance with Table 5 and Table 6.
- c) Waste shall be set out in front of the property as close to the edge of the Roadway or Private Road as possible without being placed on the sidewalk, where present, or on the surface of the Roadway or Private Road. Examples of acceptable Set-Out Areas include:
 - On the grassed area adjacent to the Roadway or Private Road, where provided; or
 - On private property immediately adjacent to the curb or sidewalk.
- d) Set-Out Areas must not interfere with pedestrians, bike traffic, public trees or any public services.

Table 5 Minimum Set-Out Area requirement per cart – Class A Multi-Residential Townhouse

Cart Type	Minimum Set-Out Area Required
Garbage Cart	0.6 m ²
Blue Cart	0.6 m ²
Green Cart	0.3 m ²

Table 6: Minimum Bulk Waste Set-Out Area requirement – Class A Multi-Residential Townhouse

Waste Type	Minimum Set-Out Area Required
Bulk Waste	6 m ²

3.4.2 Class B Multi-Residential Townhouse

Class B Multi-Residential Townhouse Developments are properties containing over 30 townhouses, where one or more Dwelling Units do not Front a Roadway or Private Road, including maisonette and stacked townhouses. Class B Multi-Residential Townhouses are eligible to receive Shared Front-End Container Collection Service of Garbage and Shared Curbside Collection Service of Organic Material, Bulk and Yard Waste.

3.4.2.1 Waste Storage Area

a) The property shall be provided with one or more shared Waste Storage Areas having a minimum area sufficient to store Waste between collection days for all Dwelling Units. Refer to Appendix 5: Waste Container Dimensions for detailed illustrations.

- b) The Waste Storage Area(s) shall:
- i. Be exclusive of living space.
 - ii. Be fully enclosed.
 - iii. Have a minimum overhead clearance of 2.5 metres.
 - iv. Have access doors with a minimum width of 2 metres.
 - v. Provide equal accessibility to all Waste streams.
 - vi. Be convenient for all Dwelling Units, such that no Occupant is required to travel more than 100 metres round trip to reach a Waste Storage Area.

- c) The Waste Storage Area may be provided as:
- i. a dedicated room attached to the building(s);
 - ii. a dedicated room within a parking structure; or
 - iii. an Accessory Structure.
- d) The maximum number of Dwelling Units per Waste container type, and the minimum required Waste Storage Area, shall be determined in accordance with Table 7, Table 8, Table 9 and Table 10.
- e) If the property is utilizing a Garbage Compactor, it shall be located within a secured area and shall be inaccessible to Occupants, except for authorized and trained personnel, in accordance with all applicable legislation, codes, and safety standards.

Table 7: Maximum number of Dwelling Units per Front-End Container for Garbage by container size – Class B Multi-Residential Townhouse

Garbage Volume	3 yd³	4 yd³	6 yd³
Compacted	50	65	100
Uncompacted	17	22	34

Table 8: Maximum Number of Dwelling Units per Cart for Recyclable and Organic Materials – Class B Multi-Residential Townhouse

Cart Type	Cart Size	Maximum Number of Dwelling Units per Cart
Blue Cart	360 L	7
Green Cart	120 L	12

Table 9: Minimum Waste Storage Area requirements per Waste container – Class B Multi-Residential Townhouse

Container Type	Minimum Waste Storage Area Required
Front-End Container	5.0 m ²

Container Type	Minimum Waste Storage Area Required
Blue Cart	1.1 m ²
Green Cart	0.53 m ²

Table 10: Minimum Bulk Waste Storage Area requirement – Class B Multi-Residential Townhouse

Number of Dwelling Units	Minimum Storage Area Required
50 Units or Less	6 m ²
Over 50 Units	10 m ²

For example:

A Class B Multi-Residential Townhouse Development with 50 Dwelling Units will require the following number of Waste containers:

- Three 3 yd³, uncompacted Front-End Containers for Garbage.
- Eight Blue Carts for Recyclable Material.
- Five Green Carts for Organic Material.

The property will require a Waste Storage Area that is a minimum of 32.45 m² to accommodate all Waste streams:

- 15 m² for three Front-End Containers.
- 8.8 m² for Blue Carts.
- 2.65 m² for Green Carts.
- 6 m² for Bulk Items.

3.4.2.2 In-Ground Containers

As an alternative to Front-End Containers, In-Ground Containers may be permitted for Garbage collection at Multi-Residential Developments, at the City’s discretion.

- a) In-Ground Containers must be compatible with front-end loading Waste Collection Vehicles used to provide Municipal Waste Collection Services.
 - Earth Bins remain an acceptable option; however, the City will collect any In-Ground Container system that is demonstrably compatible with the City’s Front-End Collection Vehicles. The City reserves the right to update

acceptable systems. Refer to Appendix 6: In-Ground Container Dimensions for an example of a compatible system.

- b) In-Ground Containers must not exceed eight cubic yards for loose material.
- c) In-Ground Containers must be located at the top of an acceptable Loading Area, as defined in Section 3.4.2.3, to ensure safe and efficient servicing.
- d) Separate Waste Storage Areas will be required for any Waste streams not collected via In-Ground Containers. These Waste Storage Areas must be directly adjacent to the In-Ground Containers and must meet the minimum size requirements specified in Section 3.4.2.1.

3.4.2.3 Loading Area

- a) The property shall be provided with a Loading Area for the collection of Front-End Containers by a front-end loading Waste Collection Vehicle. Refer to Appendix 3: Loading Areas and Staging Areas for examples.
- b) The Loading Area shall:
 - i. Be located on private property.
 - ii. Be accessible via an acceptable Access Route.
 - iii. Be a minimum of 3.5 metres in width and 13.0 metres in length.
 - iv. Have a minimum vertical clearance of 7 metres.
 - v. Be constructed at a uniform grade not exceeding 2 per cent in any direction.
 - vi. Be constructed of reinforced concrete with a minimum depth of 0.2 metres.
- c) The Loading Area location and layout must not interfere with pedestrians, bike traffic, public trees or any public services.
 - Signage, mirrors and other safety measures may be required to reduce risks.
- d) The Loading Area should be positioned in an inconspicuous location and enclosed or screened in from public view.

3.4.2.4 Staging Area

- a) The property shall be provided with a Staging Area for the set-out of Front-End Containers on collection day.

- b) The Staging Area shall:
- i. Be located on private property, adjacent to the Loading Area.
 - ii. Be no more than 1 metre higher than the Loading Area.
 - iii. Provide a minimum of 5 m² for each Front-End Container that will be set out for collection at one time.
- c) All Front-End Containers must be transported through service corridors when the Waste Storage Area does not directly connect to the Staging Area. The movement of Front-End Containers on public property is not permitted.
- d) If jockeying of Front-End Containers is necessary, an on-site staff person must be available to manoeuvre the containers to an appropriate position for collection.
- e) The Staging Area must not interfere with pedestrians, bike traffic, public trees or any public services.
- f) The Staging Area should be positioned in an inconspicuous location and enclosed or screened in from public view.

3.4.2.5 Set-Out Area

- a) The property shall be provided with a curbside Set-Out Area of sufficient size to accommodate all carts and Bulk Items set out for collection.
- b) Waste shall be set out in front of the property as close to the edge of the Roadway or Private Road as possible without being placed on the sidewalk, where present, or on the surface of the Roadway or Private Road. Examples of acceptable Set-Out Areas include:
- on the grassed area adjacent to the Roadway or Private Road, where provided; or
 - on private property immediately adjacent to the curb or sidewalk.
- c) Set-Out Areas must not interfere with pedestrians, bike traffic, public trees or any public services.
- d) The minimum size of the Set-Out Area shall be determined in accordance with Table 11 and Table 12.

Table 11: Minimum Set-Out Area requirement per cart – Class B Multi-Residential Townhouse

Cart Type	Minimum Set-Out Area Required
Blue Cart	0.6 m ²
Green Cart	0.3 m ²

Table 12: Minimum Bulk Waste Set-Out Area requirement – Class B Multi-Residential Townhouse

Number of Dwelling Units	Minimum Set-Out Area Required
50 Units or Less	6 m ²
Over 50 Units	10 m ²

3.5 Design Requirements for Multi-Residential Buildings

3.5.1 Class A Multi-Residential Building

Class A Multi-Residential Buildings are Multi-Residential Buildings containing a minimum of six and a maximum of 30 Dwelling Units and are eligible to receive Shared Curbside Collection Service of Garbage, Organic Material, Bulk and Yard Waste.

3.5.1.1 Waste Storage Area

- a) The building shall be provided with one or more Waste Storage Areas having a minimum area sufficient to store Waste between collection days for all Dwelling Units. Refer to Appendix 5: Waste Container Dimensions for detailed illustrations.
- b) The Waste Storage Area(s) shall:
 - i. Be exclusive of living space.
 - ii. Be located within the building or within an attached or integrated parking structure.
 - iii. Have a minimum overhead clearance of 2.5 metres, or if chute(s) are proposed, the minimum overhead clearance shall be 3.1 metres.

- iv. Have access doors with a minimum width of 2 metres.
 - v. Provide equal accessibility to all Waste streams.
- c) The maximum number of Dwelling Units per Waste cart, and the minimum required Waste Storage Area, shall be determined in accordance with Table 13, Table 14 and Table 15.

Table 13: Cart requirements per number of Dwelling Units – Class A Multi-Residential Building

Dwelling Units	Maximum Number of Garbage Carts	Minimum Number of Blue Carts	Minimum Number of Green Carts
6	2	4	2
7 to 9	3	4	2
10 to 12	4	4	2
13 to 15	5	4	2
16 to 17	6	6	3
18 to 20	7	6	3
21 to 23	8	6	3
24 to 25	9	6	3
26 to 28	10	6	3
29 to 30	11	6	3

Table 14: Minimum Waste Storage Area requirements per cart – Class A Multi-Residential Building

Cart Type	Cart Size	Minimum Waste Storage Area Required
Garbage Cart	360 L	1.1 m ²
Blue Cart	360 L	1.1 m ²
Green Cart	120 L	0.53 m ²

Table 15: Minimum Bulk Waste Storage Area requirement – Class A Multi-Residential Building

Waste Type	Minimum Storage Area Required
Bulk Waste	6 m ²

3.5.1.2 Waste Set-Out Area

- a) The property shall be provided with a curbside Set-Out Area of sufficient size to accommodate all carts and Bulk Items set out for collection.
- b) Waste shall be set out in front of the property as close to the edge of the Roadway or Private Road as possible without being placed on the sidewalk, where present, or on the surface of the Roadway or Private Road. Examples of acceptable Set-Out Areas include:
 - on the grassed area adjacent to the Roadway or Private Road, where provided; or
 - on private property immediately adjacent to the curb or sidewalk.
- c) Set-Out Areas must not interfere with pedestrians, bike traffic, public trees or any public services.
- d) The minimum size of the Set-Out Area shall be determined in accordance with Table 16 and Table 17.

Table 16: Minimum Set-Out Area requirement per cart – Class A Multi-Residential Building

Cart Type	Minimum Set-Out Area Required
Garbage Cart	0.6 m ²
Blue Cart	0.6 m ²
Green Cart	0.3 m ²

Table 17: Minimum Bulk Waste Set-Out Area requirement – Class A Multi-Residential Building

Waste Type	Minimum Set-Out Area Required
Bulk Waste	6 m ²

3.5.2 Class B Multi-Residential Buildings

Class B Multi-Residential Buildings are Multi-Residential Buildings under seven Storeys in height and containing over 30 Dwelling Units. Class B Multi-Residential Buildings are eligible to receive Front-End Container Collection Service of Garbage and Shared Curbside Collection Service of Green Carts, Bulk and Yard Waste.

3.5.2.1 Waste Separation

Class B Multi-Residential Buildings are not required to provide a Waste separation system incorporating chute(s); however, the City reserves the right to require chute(s) where the number of Dwelling Units makes alternative collection methods impractical or operationally infeasible.

Where chute(s) are proposed or required, they shall comply with the requirements of Section 3.5.3.1.

3.5.2.2 Waste Storage Area

- a) The building shall be provided with one or more Waste Storage Areas having a minimum area sufficient to store Waste between collection days for all Dwelling Units. Refer to Appendix 5: Waste Container Dimensions for detailed illustrations.
- b) The Waste Storage Area(s) shall:
 - i. Be exclusive of living space.
 - ii. Be located within the building or within an attached or integrated parking structure.
 - iii. Have a minimum overhead clearance of 2.5 metres, or if chute(s) are proposed, the minimum overhead clearance shall be 3.1 metres.
 - iv. Have access doors with a minimum width of 2 metres.
 - v. Provide equal accessibility to all Waste streams.
- c) The maximum number of Dwelling Units per Waste container type, and the minimum required Waste Storage Area, shall be determined in accordance with Table 18, Table 19, Table 20 and Table 21.

- d) If the building is utilizing a Garbage Compactor, it shall be located within a secured area and shall be inaccessible to Occupants, except for authorized and trained personnel, in accordance with all applicable legislation, codes, and safety standards.

Table 18: Maximum number of Dwelling Units per Front-End Container for Garbage by container size – Class B Multi-Residential Building

Garbage Volume	3 yd³	4 yd³	6 yd³
Compacted	50	65	100
Uncompacted	17	22	34

Table 19: Maximum number of Dwelling Units per cart for Recyclable and Organic Materials – Class B Multi-Residential Building

Cart Type	Cart Size	Maximum Number of Dwelling Units per Cart
Blue Cart	360 L	7
Green Cart	120 L	12

Table 20: Minimum Waste Storage Area requirements per Waste container – Class B Multi-Residential Building

Container Type	Minimum Waste Storage Area Required
Front-End Container	5.0 m ²
Blue Cart	1.1 m ²
Green Cart	0.53 m ²

Table 21: Minimum Bulk Waste Storage Area requirement – Class B Multi-Residential Building

Number of Dwelling Units	Minimum Waste Storage Area Required
50 Units or Less	6 m ²
Over 50 Units	10 m ²

3.5.2.3 Loading Area

- a) The property shall be provided with a Loading Area for the collection of Front-End Containers by a front-end loading Waste Collection Vehicle. Refer to Appendix 3: Loading Areas and Staging Areas for examples.
- b) The Loading Area shall:
 - i. Be located on private property.
 - ii. Be accessible via an acceptable Access Route.
 - iii. Be a minimum of 3.5 metres in width and 13.0 metres in length.
 - iv. Have a minimum vertical clearance of 7 metres.
 - v. Be constructed at a uniform grade not exceeding 2 per cent in any direction.
 - vi. Be constructed of reinforced concrete with a minimum depth of 0.2 metres.
- c) The Loading Area location and layout must not interfere with pedestrians, bike traffic, public trees or any public services.
 - Signage, mirrors and other safety measures may be required to reduce risks.
- d) The Loading Area should be positioned in an inconspicuous location and enclosed or screened in from public view.

3.5.2.4 Staging Area

- a) The property shall be provided with a Staging Area for the set-out of Front-End Containers on collection day.
- b) The Staging Area shall:
 - i. Be located on private property, adjacent to the Loading Area.
 - ii. Be no more than 1 metre higher than the Loading Area.

- iii. Provide a minimum of 5 m² for each Front-End Container that will be set out for collection at one time.
- c) All Front-End Containers must be transported through service corridors when the Waste storage room does not directly connect to the Staging Area. The movement of Front-End Containers on public property is not permitted.
- d) If jockeying of Front-End Containers is necessary, an on-site staff person must be available to manoeuvre the containers to an appropriate position for collection.
- e) The Staging Area must not interfere with pedestrians, bike traffic, public trees or any public services.
- f) The Staging Area should be positioned in an inconspicuous location and enclosed or screened in from public view.

3.5.2.5 Set-Out Area

- a) The property shall be provided with a curbside Set-Out Area of sufficient size to accommodate all carts and Bulk Items set out for collection.
- b) Waste shall be set out in front of the property as close to the edge of the Roadway or Private Road as possible without being placed on the sidewalk, where present, or on the surface of the Roadway or Private Road. Examples of acceptable Set-Out Areas include:
 - on the grassed area adjacent to the Roadway or Private Road, where provided; or
 - on private property immediately adjacent to the curb or sidewalk.
- c) Set-Out Areas must not interfere with pedestrians, bike traffic, public trees or any public services.
- d) The minimum size of the Set-Out Area shall be determined in accordance with Table 22 and Table 23.

Table 22: Minimum Set-Out Area requirement per cart – Class B Multi-Residential Building

Cart Type	Minimum Set-Out Area Required
Blue Cart	0.6 m ²

Cart Type	Minimum Set-Out Area Required
Green Cart	0.3 m ²

Table 23 Minimum Bulk Waste Set-Out Area requirement – Class B Multi-Residential Building

Number of Dwelling Units	Minimum Set-Out Area Required
50 Units or Less	6 m ²
Over 50 Units	10 ²

3.5.3 Class C Multi-Residential Buildings

Class C Multi-Residential Buildings are buildings over six Storeys and are eligible to receive Front-End Container Collection Service of Garbage, Recyclable Material and Organic Material.

3.5.3.1 Waste Separation

- a) Class C Multi-Residential Buildings are required to have a Waste separation system accommodating four Waste streams: Garbage, container Recyclable Material, fibre Recyclable Material and Organic Material.
 - i. The Waste separation system shall consist of three separate chutes, with one chute incorporating a bi-sorter for Recyclable Material.
- b) The Waste separation system shall provide equal accessibility to all Waste streams.
- c) Each floor must be equipped with a chute room and each chute must terminate into a Waste Storage Area within the building where all Waste will be stored in between collection days in Front-End Containers.
- d) Waste chutes must be equipped with lock out mechanisms and chute washing systems as per Section 3.6.33 of the Ontario Building Code.

3.5.3.2 Waste Storage Area

- a) The building shall be provided with one or more Waste Storage Areas having a minimum area sufficient to store Waste between collection days for all Dwelling Units. Refer to Appendix 5: Waste Container Dimensions for detailed illustrations.
- b) The Waste Storage Area(s) shall:
 - i. Be exclusive of living space.
 - ii. Be located within the building or within an attached or integrated parking structure.
 - iii. Have a minimum overhead clearance of 3.1 metres.
 - iv. Have access doors with a minimum width of 2 metres.
 - v. Provide equal accessibility to all Waste streams.
 - vi. Provide a minimum of 5 m² for each required Front-End Container.
- c) The Waste Storage Area shall have a drop off area for Bulk Items and for large Recyclable Material not suitable to be disposed of in chutes.
- d) The maximum number of Dwelling Units per Front-End Container and the minimum Waste Storage Area requirements shall be determined in accordance with Table 24 and Table 25.
 - i. Class C Multi-Residential Buildings are required to have a minimum of two Front-End Containers for each Waste stream regardless of the number of Dwelling Units.
- e) If the building is utilizing a Garbage Compactor, it shall be located within a secured area and shall be inaccessible to Occupants, except for authorized and trained personnel, in accordance with all applicable legislation, codes, and safety standards.

Table 24: Maximum number of Dwelling Units per Front-End Container by Waste stream and container Size – Class C Multi-Residential Building

Waste Stream	2 yd³	3 yd³	4 yd³	6 yd³
Garbage (Compacted)	-	50	65	100
Garbage (Uncompacted)	-	17	22	34
Recyclable Material	-	30	45	60
Organic Material	120	-	-	-

Table 25: Minimum Bulk Waste Storage Area requirement – Class C Multi-Residential Building

Number of Dwelling Units	Minimum Storage Area Required
50 Units or Less	6 m ²
Over 50 Units	10 m ²

3.5.3.3 Loading Area

- a) The property shall be provided with a Loading Area for the collection of Front-End Containers by a front-end loading Waste Collection Vehicle. Refer to Appendix 3: Loading Areas and Staging Areas for examples.
- b) The Loading Area shall:
 - i. Be located on private property.
 - ii. Be accessible via an acceptable Access Route.
 - iii. Be a minimum of 3.5 metres in width and 13.0 metres in length.
 - iv. Have a minimum vertical clearance of 7 metres.
 - v. Be constructed at a uniform grade not exceeding 2 per cent in any direction.
 - vi. Be constructed of reinforced concrete with a minimum depth of 0.2 metres.
- c) The Loading Area location and layout must not interfere with pedestrians, bike traffic, public trees or any public services.
 - Signage, mirrors and other safety measures may be required to reduce risks.
- d) The Loading Area should be positioned in an inconspicuous location and enclosed or screened in from public view.
- e) The City may, at its discretion, allow for multiple Multi-Residential Buildings within one Development to share a Loading Area and Staging Area to receive Front-End Container Collection Services. This sharing of facilities will be contingent on the following minimum requirements:
 - i. that easements or agreements for the use of the Loading Area have been secured for the buildings that do not own the property that the Loading Area and Staging Area are situated on; and

- ii. that the Staging Area is large enough to accommodate the Front-End Containers for all buildings being proposed to use it at the same time.

3.5.3.4 Staging Area

- a) The property shall be provided with a Staging Area for the set-out of Front-End Containers on collection day.
- b) The Staging Area shall:
 - i. Be located on private property, adjacent to the Loading Area.
 - ii. Be no more than 1 metre higher than the Loading Area.
 - iii. Provide a minimum of 5 m² for each Front-End Container that will be set out for collection at one time.
- c) All Front-End Containers must be transported through service corridors when the Waste Storage Area does not directly connect to the Staging Area. The movement of Front-End Containers on public property is not permitted.
- d) If jockeying of Front-End Containers is necessary, an on-site staff person must be available to manoeuvre the containers to an appropriate position for collection.
- e) The Staging Area must not interfere with pedestrians, bike traffic, public trees or any public services.
- f) The Staging Area should be positioned in an inconspicuous location and enclosed or screened in from public view.

3.6 Design Requirements for Commercial Developments

Eligible Commercial Properties shall receive Municipal Curbside Collection Service for Garbage and Organic Material.

Eligibility for service is at the discretion of the City. Properties that are anticipated to exceed the Garbage allotment established under the Waste By-law will be deemed ineligible for Municipal Waste Collection Services.

3.6.1 Waste Storage Area

- a) Eligible Commercial Properties shall be provided with a Waste Storage Area of sufficient size to store Waste between collection days.
- b) The Waste Storage Area shall:
 - i. Be for the exclusive use of the Commercial Property.
 - ii. Be separate from any residential portion of the property, where applicable.
 - iii. Be fully enclosed.
 - iv. Be of sufficient size and configuration to accommodate, at a minimum, two Blue Boxes, one Green Cart, and six Garbage Containers.
- c) The Waste Storage Area may be provided as:
 - i. a dedicated room attached to the building(s);
 - ii. a dedicated room within an integrated parking structure; or
 - iii. an Accessory Structure.

3.6.2 Waste Set-Out Area

- a) The property shall be provided with a minimum of 2.5 square metres for a Waste Set-Out Area. Waste shall be set out in front of the property as close to the edge of the Roadway or Private Road as possible without being placed on the sidewalk, where present, or on the surface of the Roadway or Private Road. Examples of acceptable Set-Out Areas include:
 - i. on the grassed area adjacent to the Roadway or Private Road, where provided; or
 - ii. on private property immediately adjacent to the curb or sidewalk.
- b) Set-Out Areas must not interfere with pedestrians, bike traffic, public trees or any public services.

3.7 Design Requirements for Other Eligible Properties

This section applies to properties that are deemed eligible for Municipal Waste Collection Services through either:

- an agreement with the City; or

- a determination of eligibility made by the General Manager in accordance with the Waste By-law.

As these properties do not fit within the eligible defined Development types listed above, the applicable Waste collection method and design requirements will be determined by the City, on a case-by-case basis. In all cases, the following requirements must be demonstrated.

3.7.1 Waste Storage Area

- a) The property must provide a Waste Storage Area consistent with the applicable requirements in Section 3.4.2.1 or Section 3.6.1, whichever is more applicable to the property use.

3.7.2 Waste Set-Out Area

- a) Where a property will receive Curbside Collection Service, the property must provide a Waste Set-Out Area consistent with the applicable requirements in Section 3.6.2.

3.7.3 Loading Area

- a) Where a property will receive Front-End Container Collection Service, the property must provide a Loading Area consistent with the applicable requirements in Section 3.4.2.3.

3.7.4 Staging Area

- a) Where a property will receive Front-End Container Collection Service, the property must provide a Staging Area consistent with the applicable requirements in Section 3.4.2.4.

4.0 Serviceability Requirements for All Developments

Properties that have demonstrated compliance with the applicable requirements through a Planning Act application or an application for Municipal Waste Collection Services, and that are deemed eligible for Municipal Waste Collection, must meet the following serviceability requirements before service will commence.

The Owner is responsible for managing and removing all Waste generated on the property, at the Owner's expense, until Municipal Waste Collection Services are initiated.

4.1 Access Route Requirements

All Access Routes via Roadways or Private Roads must present the following, where applicable:

- a) All boulevards are rough graded.
- b) All curbs are installed.
- c) All surfaces that vehicles will access are completed to, at minimum, base curb and base asphalt with no raised maintenance/service covers.
- d) Winter maintenance is provided.
- e) Free from obstruction related to construction, including, but not limited to, vehicles, equipment and supplies.
- f) Safety signage, including but not limited to, mirrors, lights, no parking signs, stop signs, have been installed.

4.2 Property Requirements

The following requirements must be met; where applicable, for a property to be deemed serviceable:

- a) Must be at least 70% occupied.
- b) All Waste separation systems are installed, operational and maintained.
- c) All required Waste containers are on site, in place and ready for use.
- d) Set-Out Areas are free from obstruction.
- e) Loading and Staging Areas are installed and maintained and free from obstruction.

- f) Municipal Addresses are identifiable and fully visible.
- g) An Agreement for On-Site Collection of Municipal Solid Waste has been completed by the property Owner(s) and submitted and approved, where applicable.
- h) A Certificate of Insurance confirming a minimum of \$2,000,000 in general liability coverage for the property has been provided to the City.

4.3 Application for Municipal Waste Collection Service

Eligible properties may request service after meeting the serviceability requirements by contacting the City's Customer Contact Centre at 905-546-CITY (2489) or Wastemanagement@hamilton.ca.

The City will conduct site inspections to confirm that eligibility and serviceability requirements have been satisfied. Municipal Waste Collection Services will not be initiated until the City has confirmed serviceability. Until such confirmation is provided, the Owner remains responsible for managing and removing all Waste generated on the property at the Owner's expense.

Appendices

Appendix 1: Access Routes

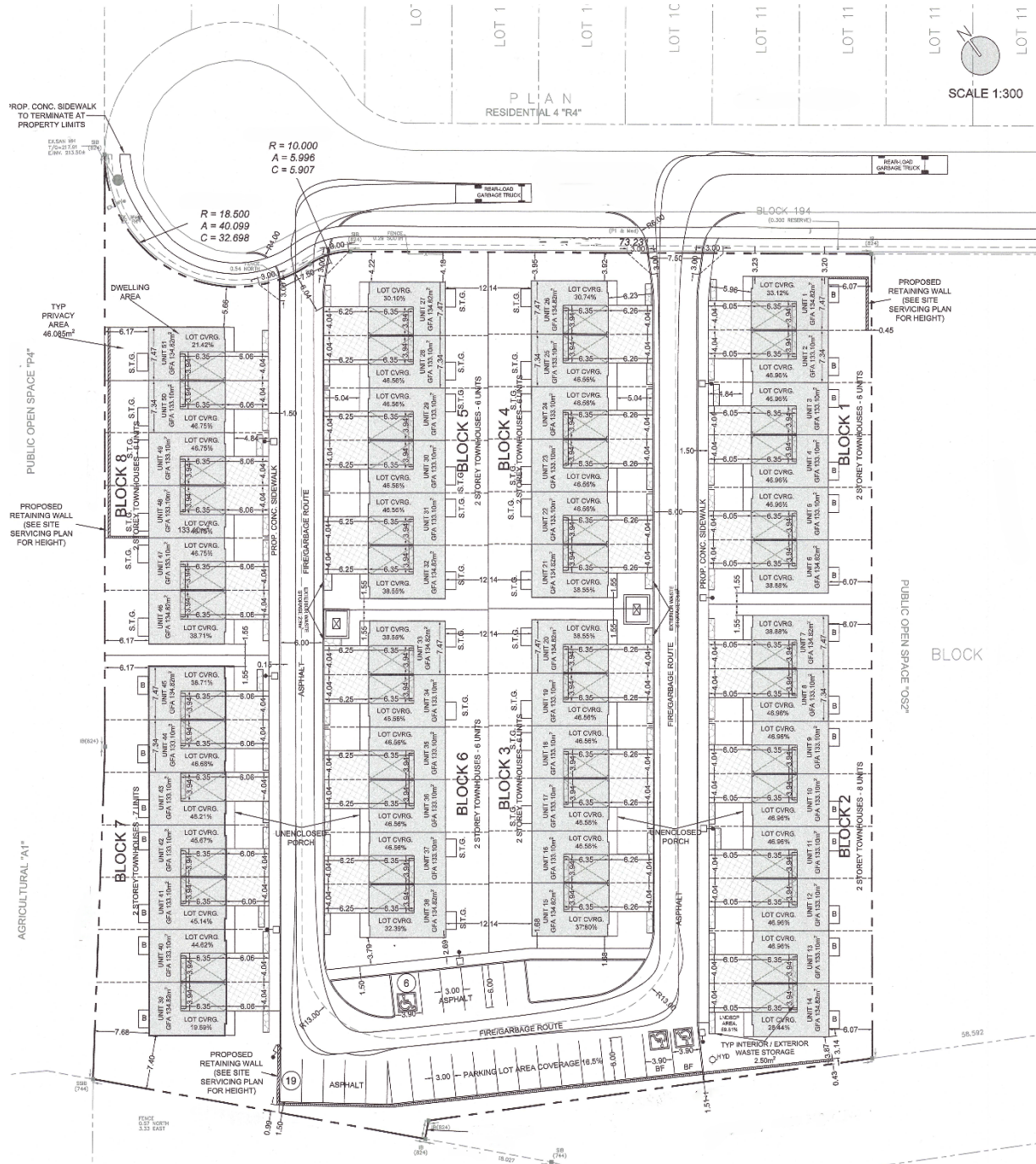


Figure 1. Site plan illustrating an acceptable Access Route that allows continuous forward motion.

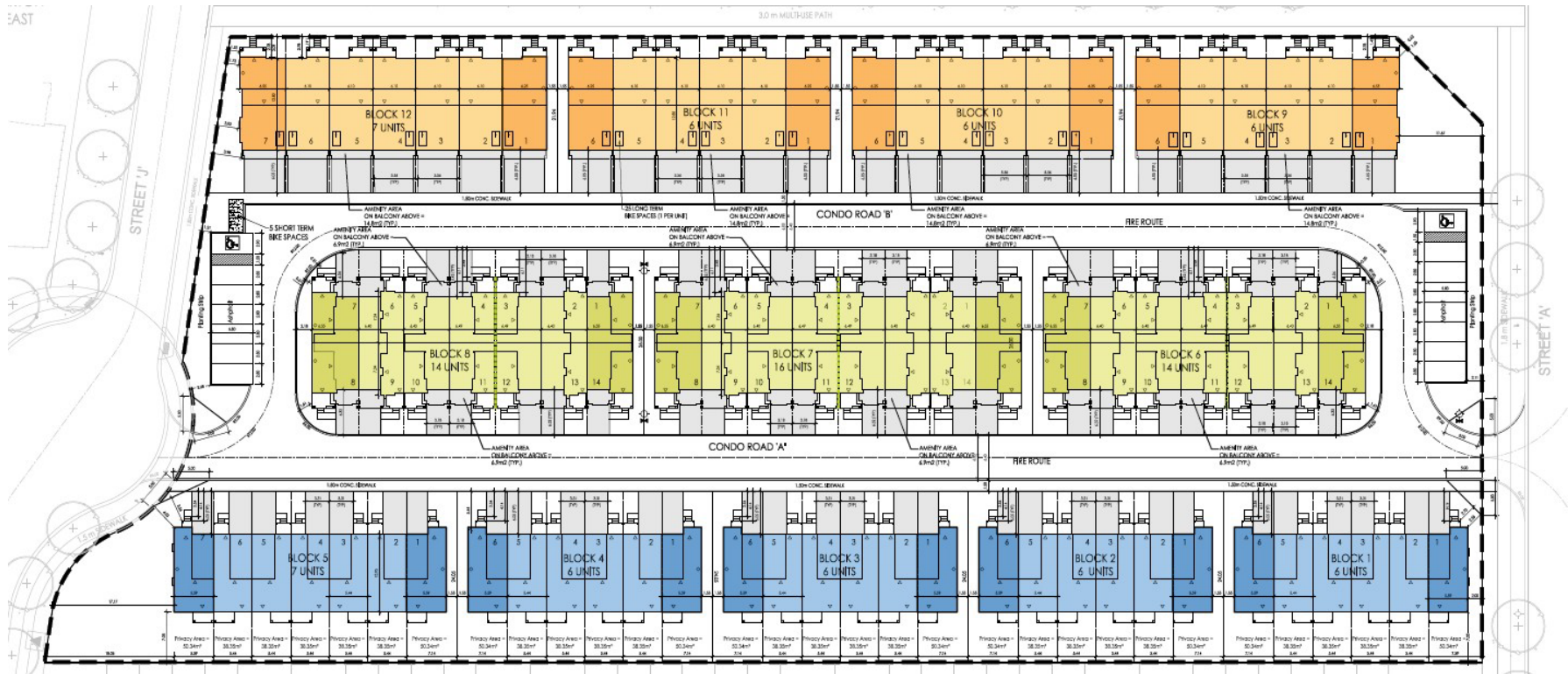


Figure 2. Alternate example of an acceptable access route providing continuous forward motion.

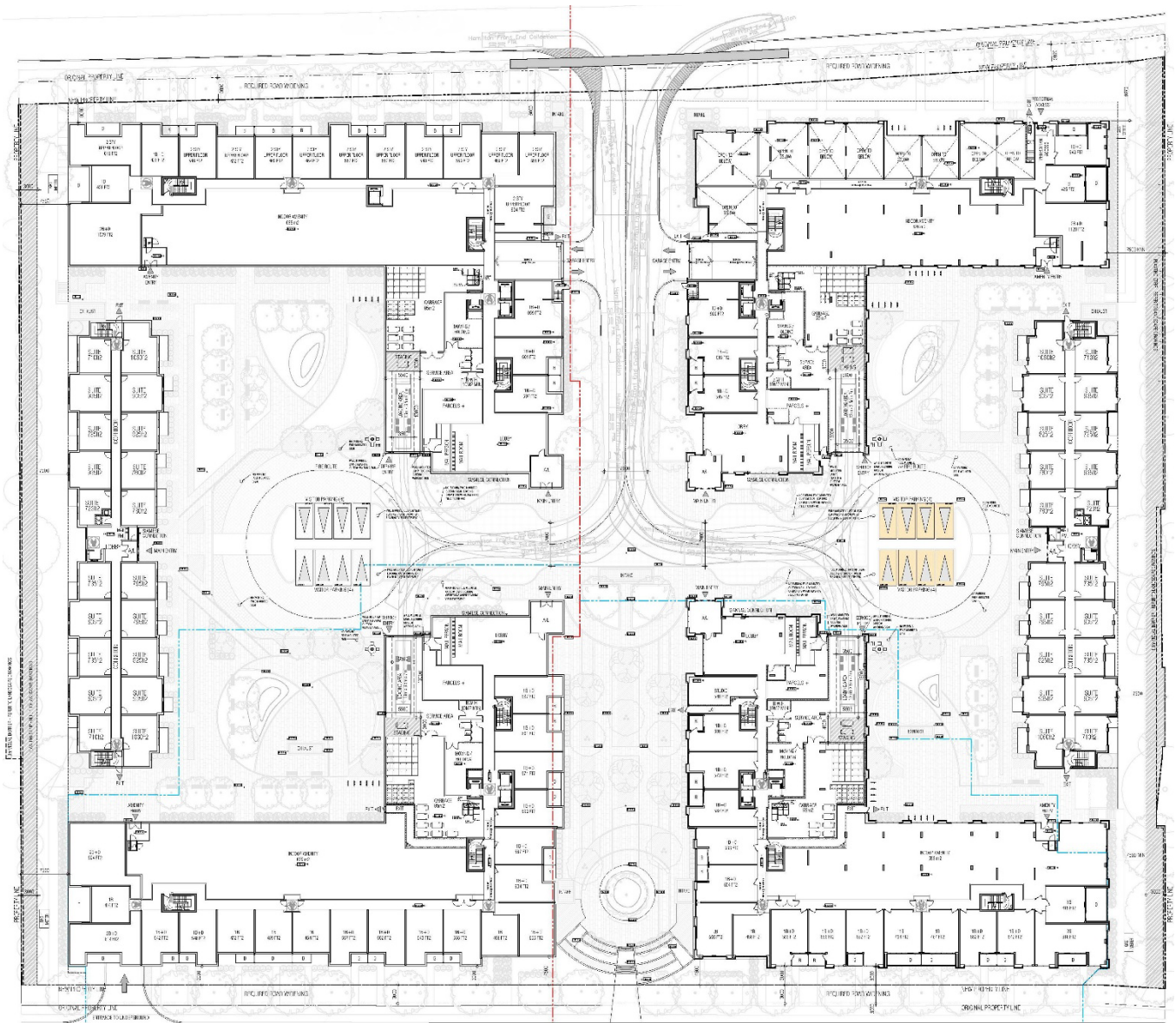


Figure 3. Access Route leading to a designated Loading Area, including vehicle movement diagrams.

Appendix 2: T-Turnaround Requirements

“T” Turnaround Specification

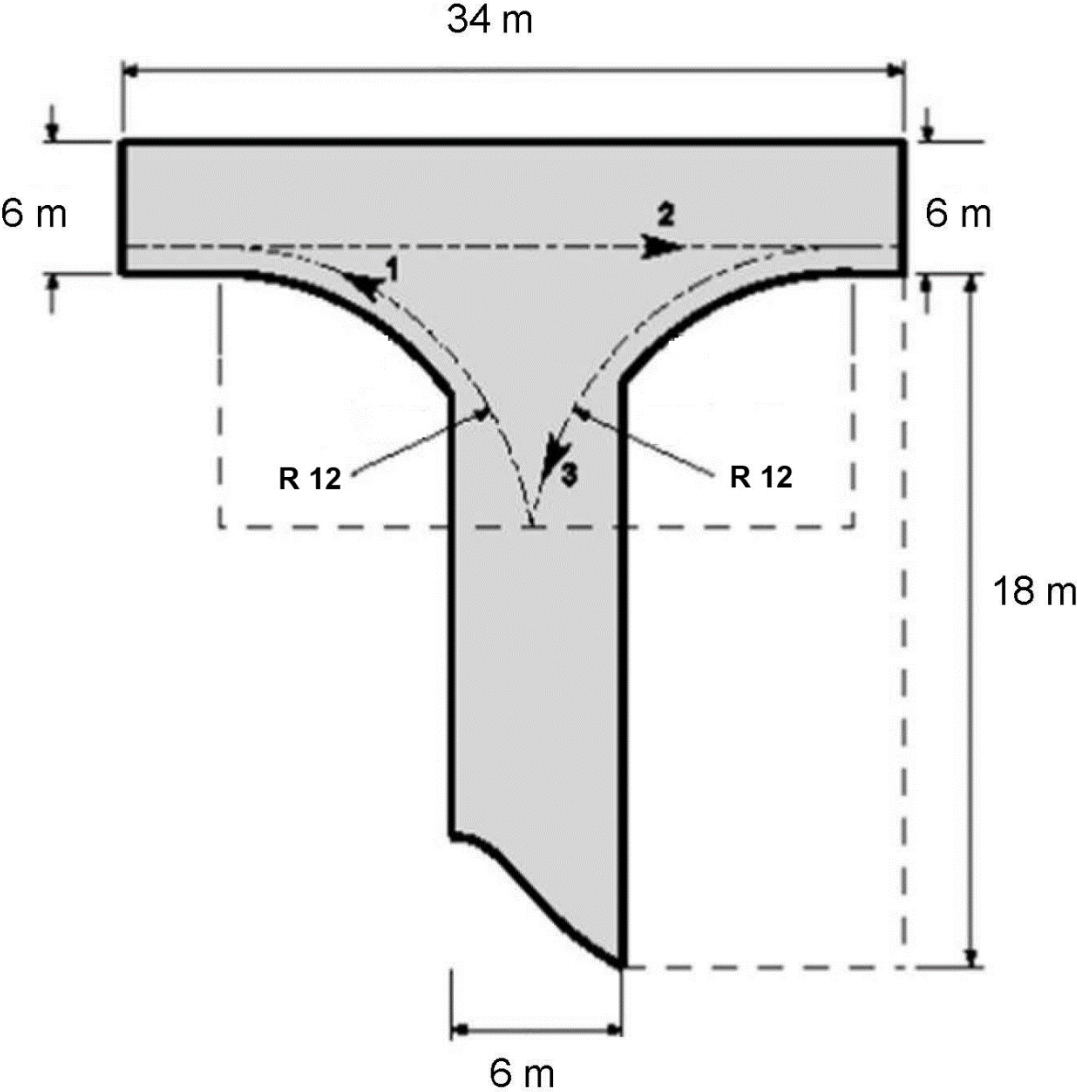


Figure 4. Diagram of a T-Turnaround area showing the required dimensions and turning radii.



Figure 6. Aerial image of an existing Development in Hamilton featuring an acceptable T-Turnaround.

Appendix 3: Loading Areas and Staging Areas

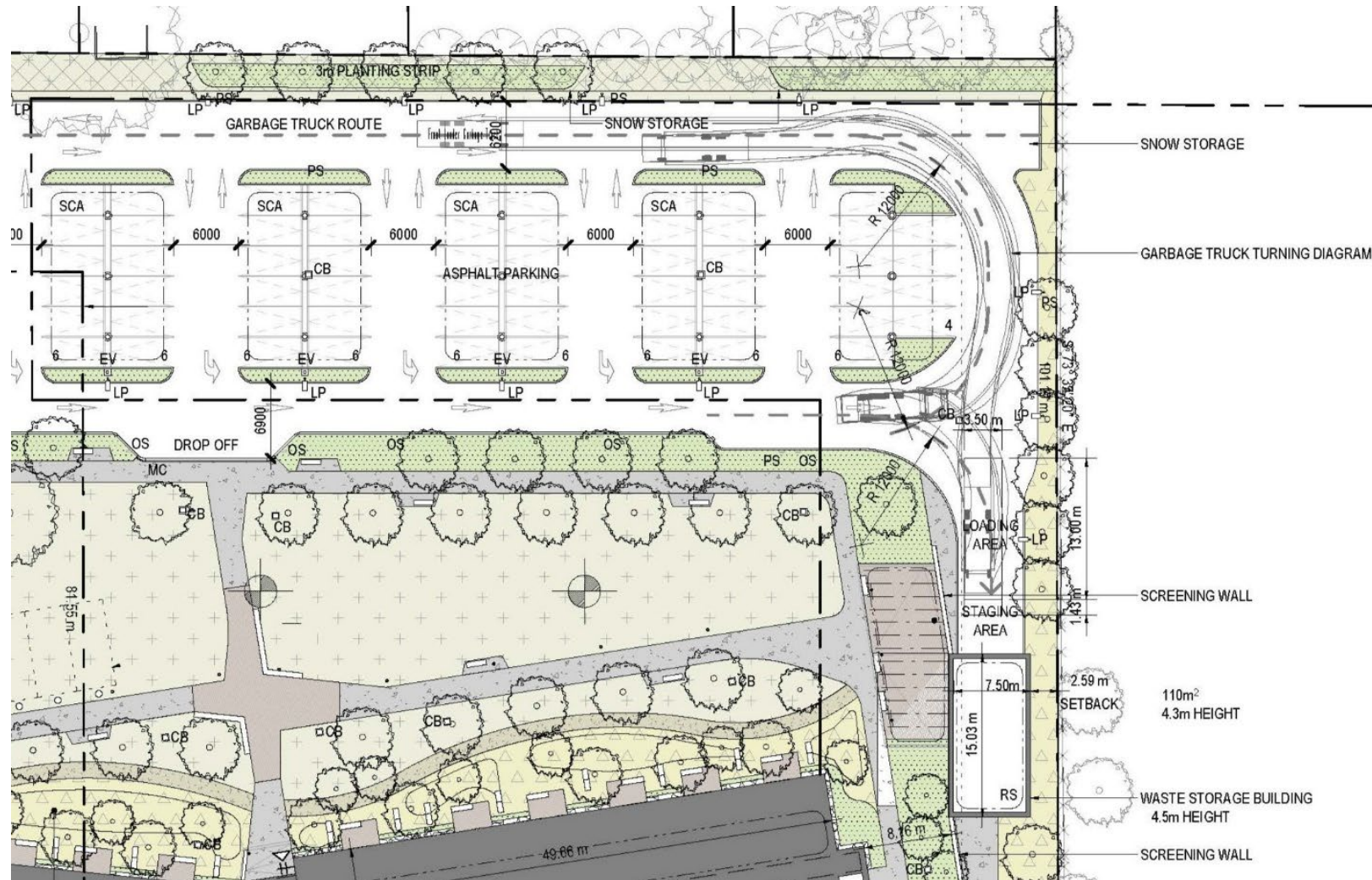


Figure 7. Site plan illustrating an acceptable Loading and Staging Area.

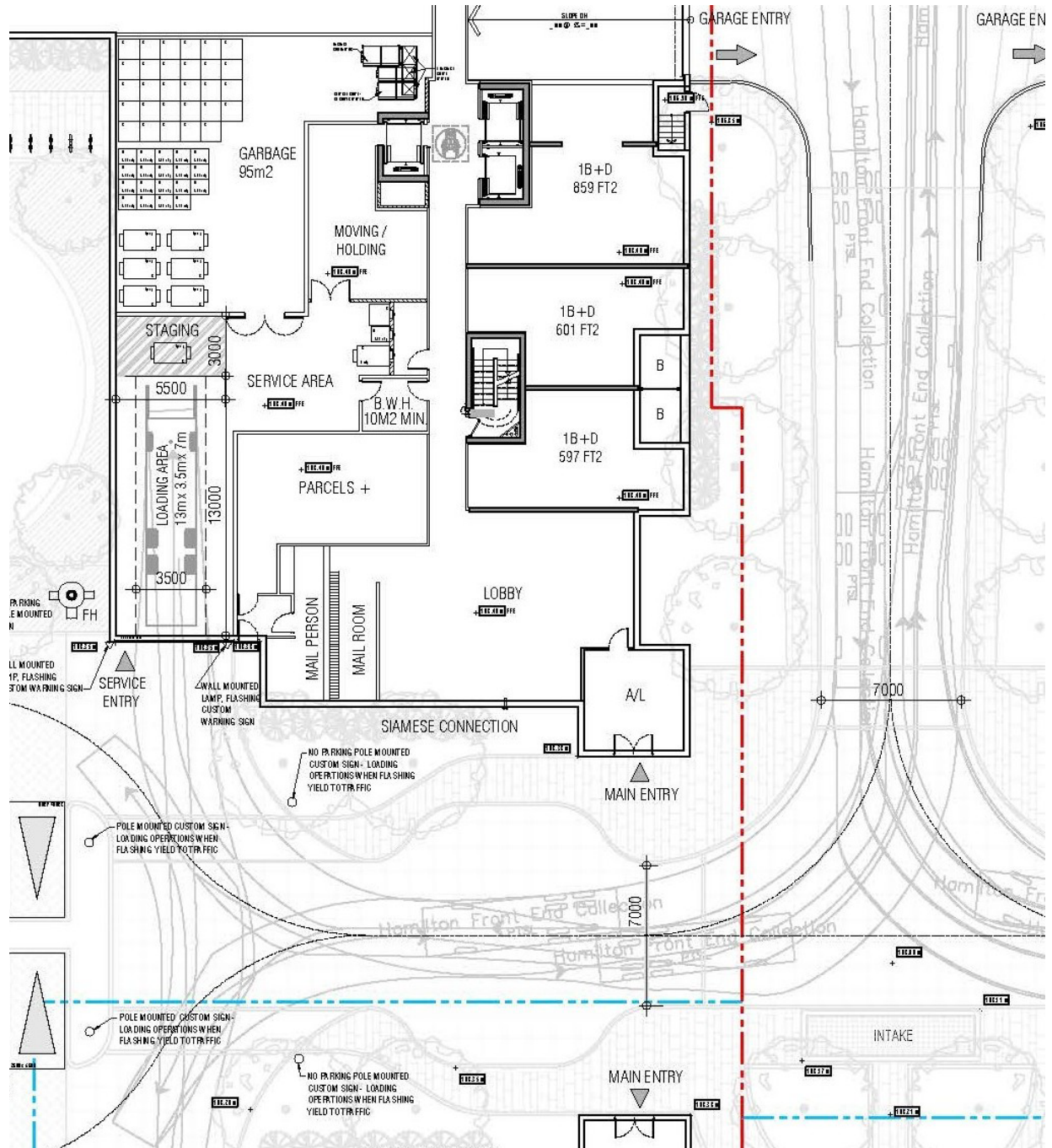


Figure 8. Alternate example of an acceptable Loading and Staging Area.

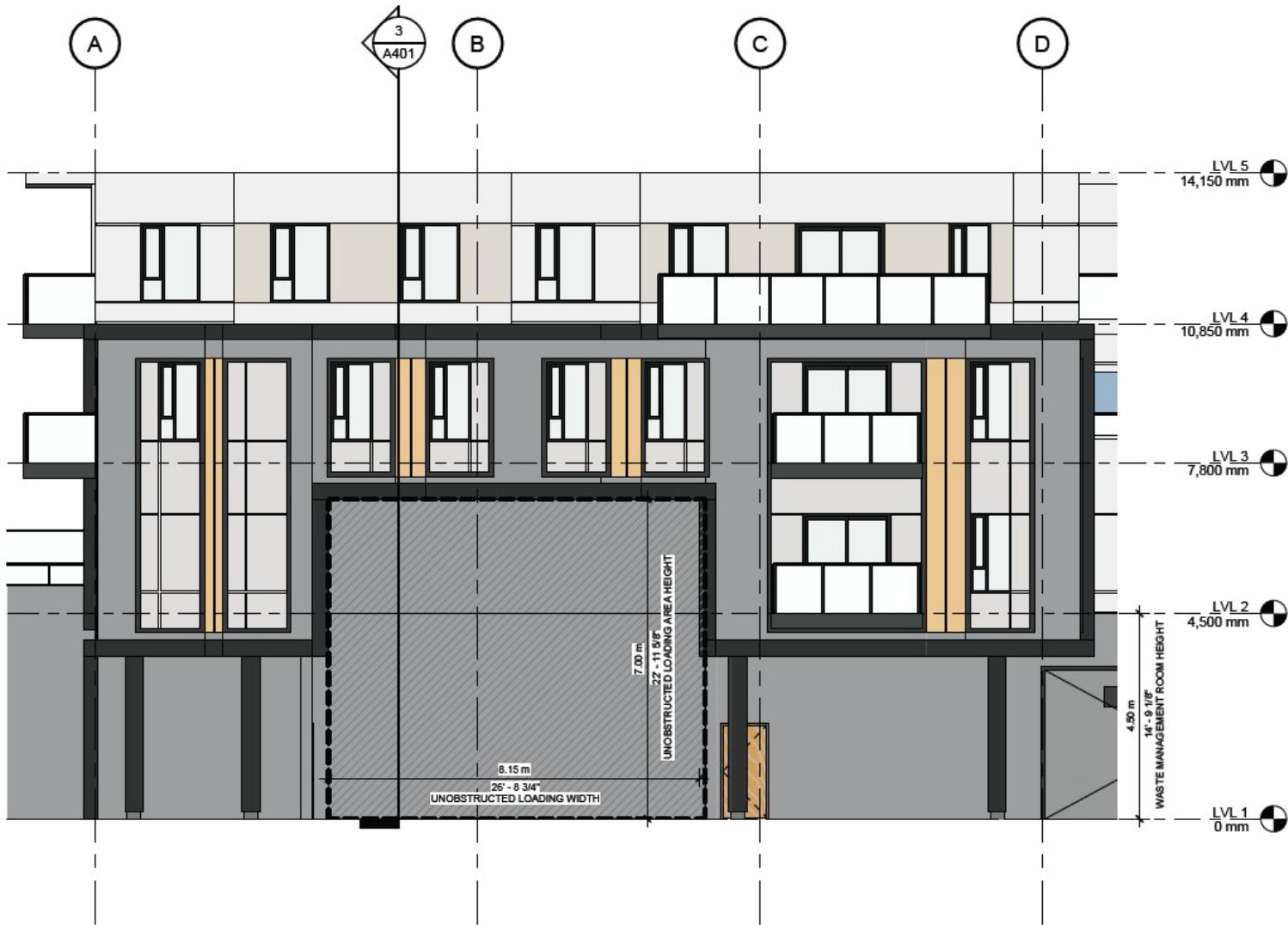


Figure 9. Illustration of the minimum Loading Area height.

Appendix 4: Waste Collection Vehicle Dimensions

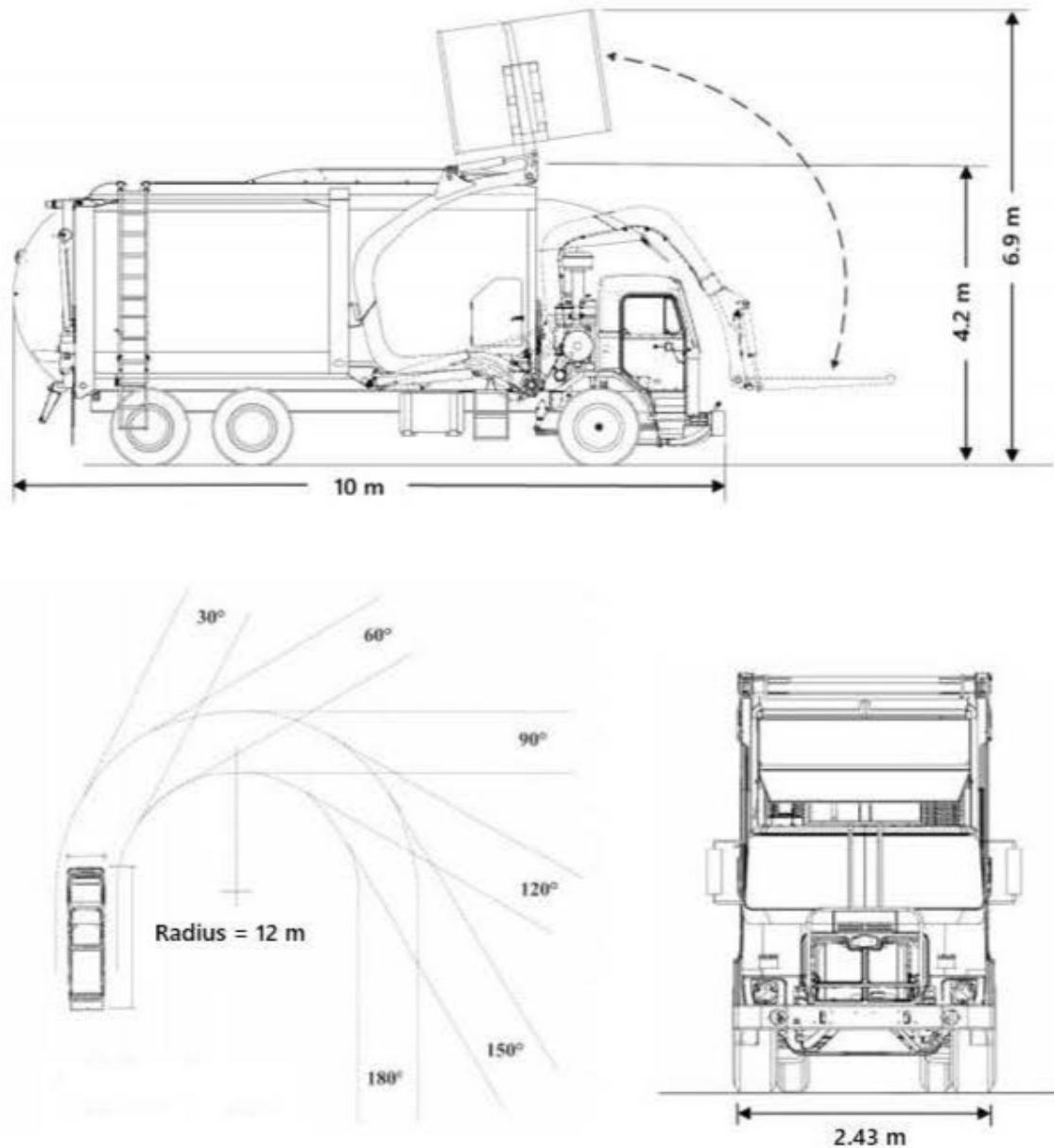


Figure 10. Illustration of a Front-end loading Waste Collection Vehicle showing approximate dimensions.

Note: Dimensions and turning radii provided are approximate and may vary based on vehicle make/model, equipment configuration and manufacturer specifications.

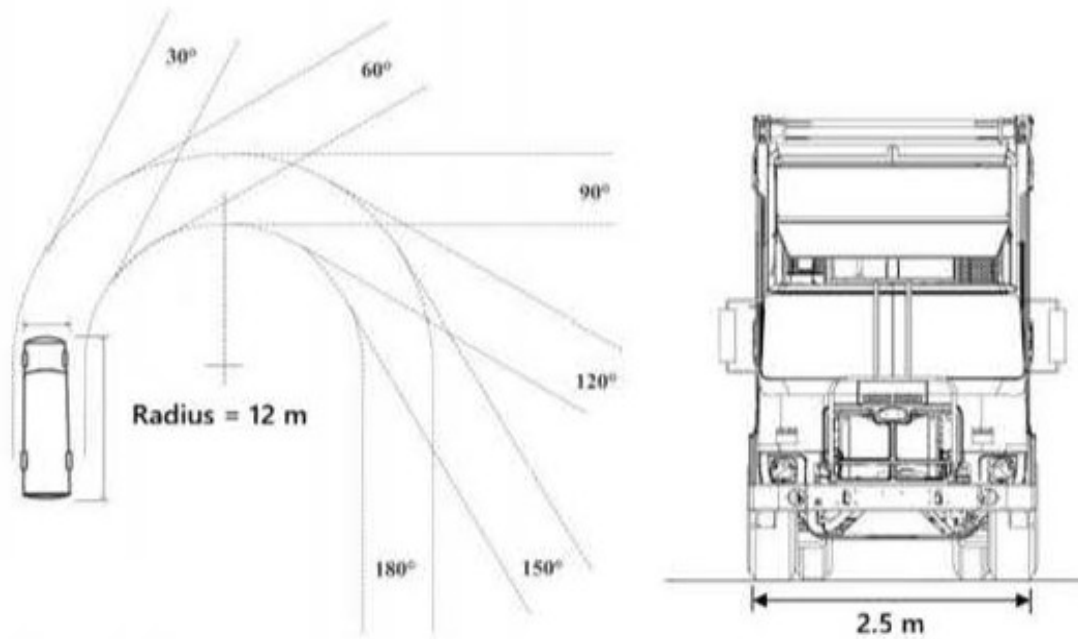
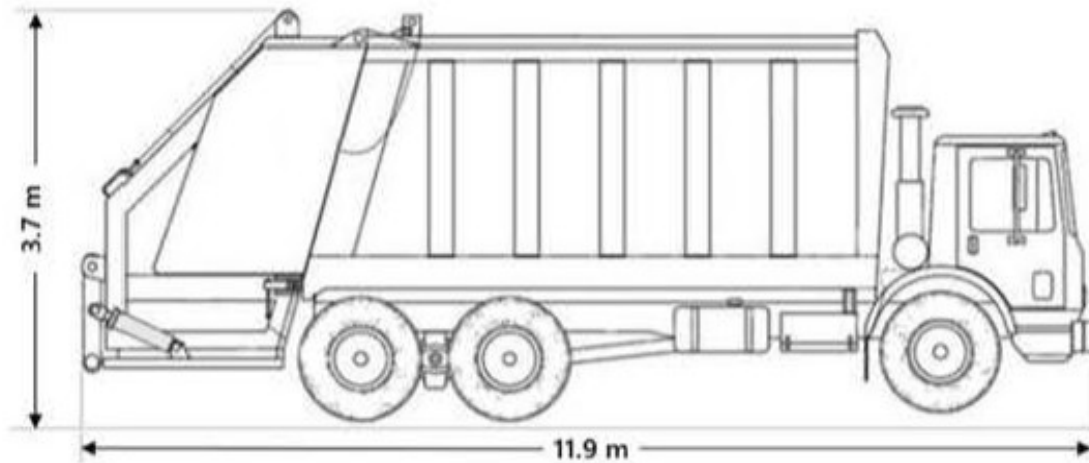


Figure 11. Illustration of a rear loading Waste Collection Vehicle showing approximate dimensions.

Note: Dimensions and turning radii provided are approximate and may vary based on vehicle make/model, equipment configuration and manufacturer specifications.

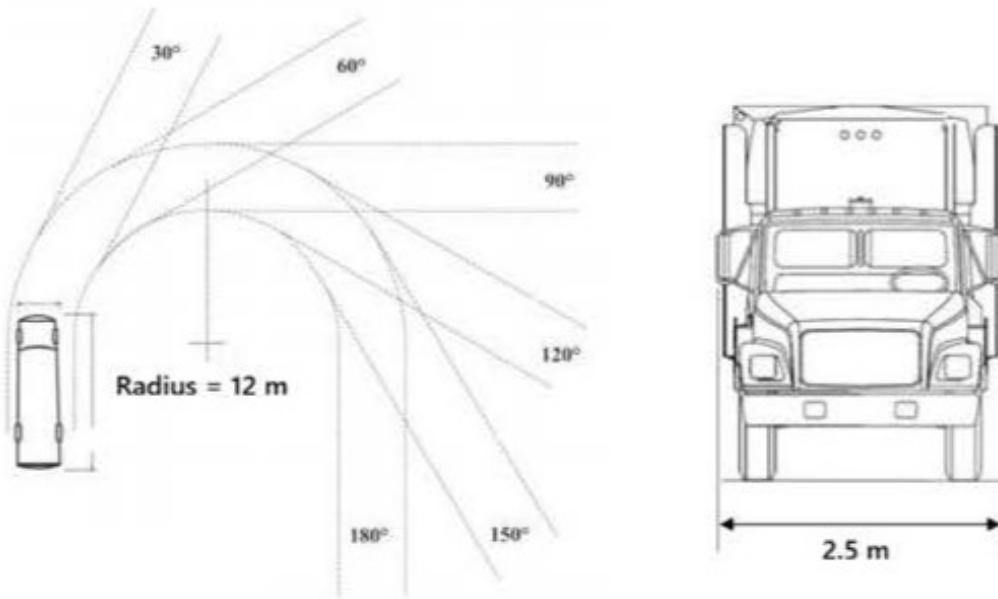
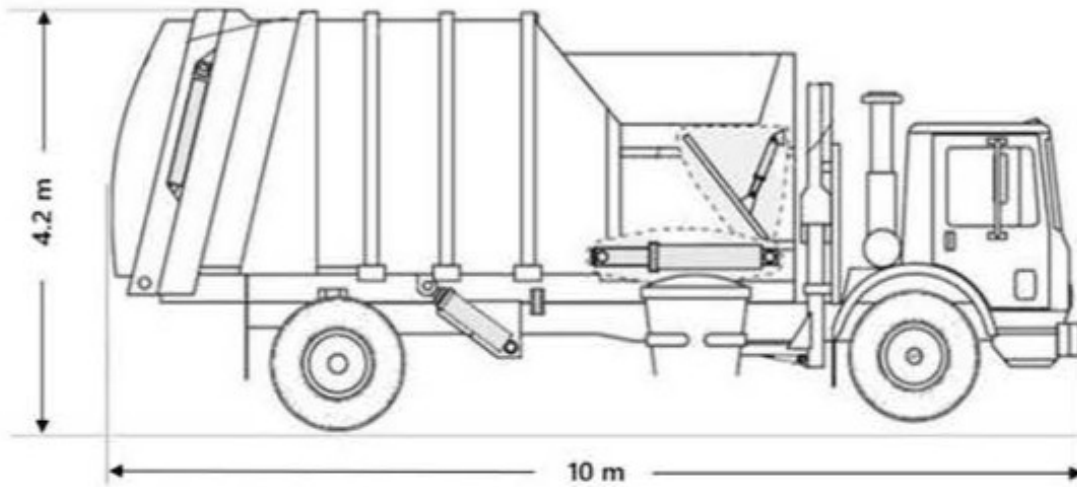


Figure 12. Illustration of a side loading Waste Collection Vehicle showing approximate dimensions.

Note: Dimensions and turning radii provided are approximate and may vary based on vehicle make/model, equipment configuration and manufacturer specifications.

Appendix 5: Waste Container Dimensions

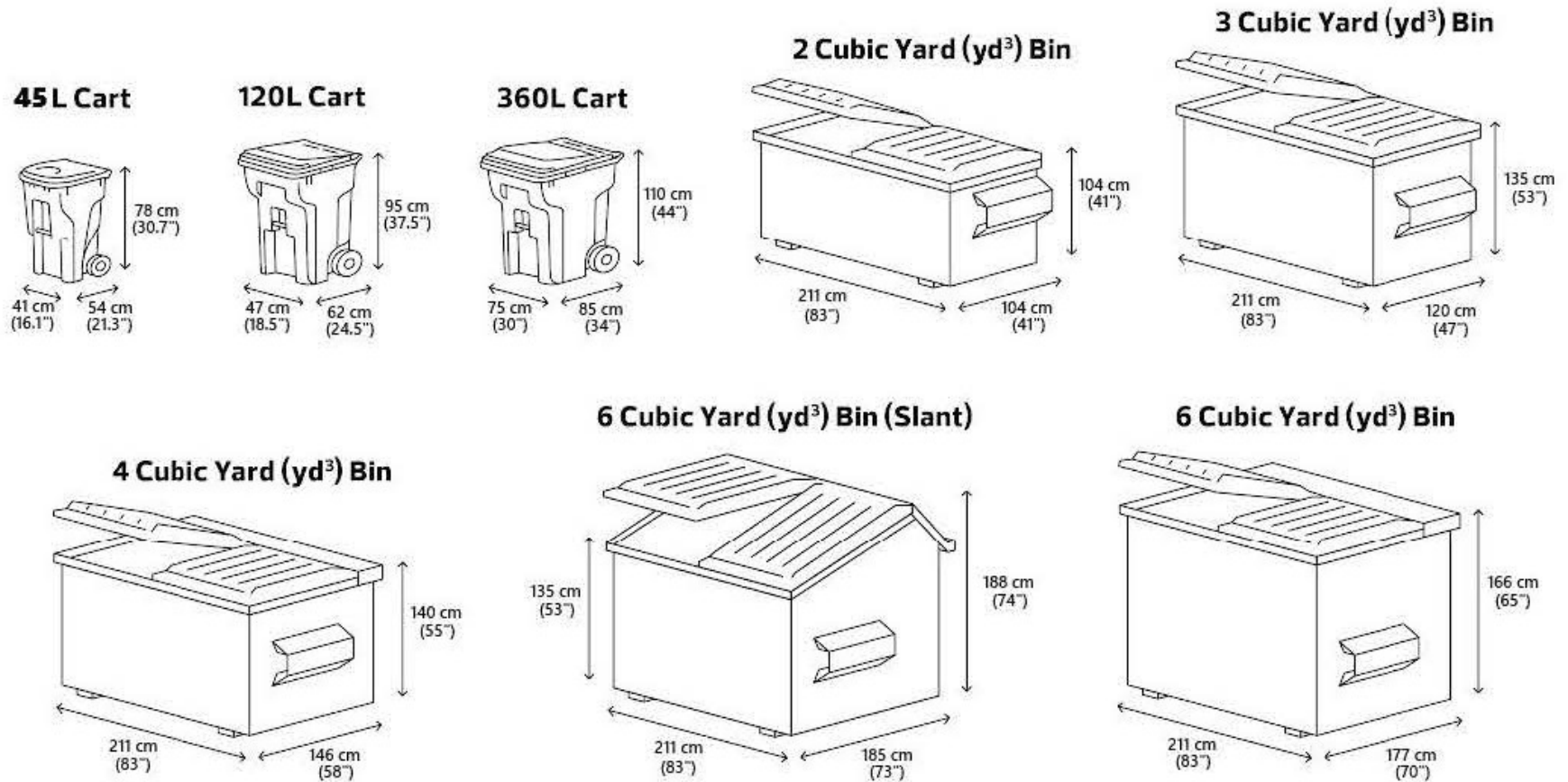


Figure 13. Diagrams and dimensions of Waste carts and Front-End Containers.

Note: All container dimensions shown are nominal and may vary by manufacturer.

Appendix 6: In-Ground Container Dimensions

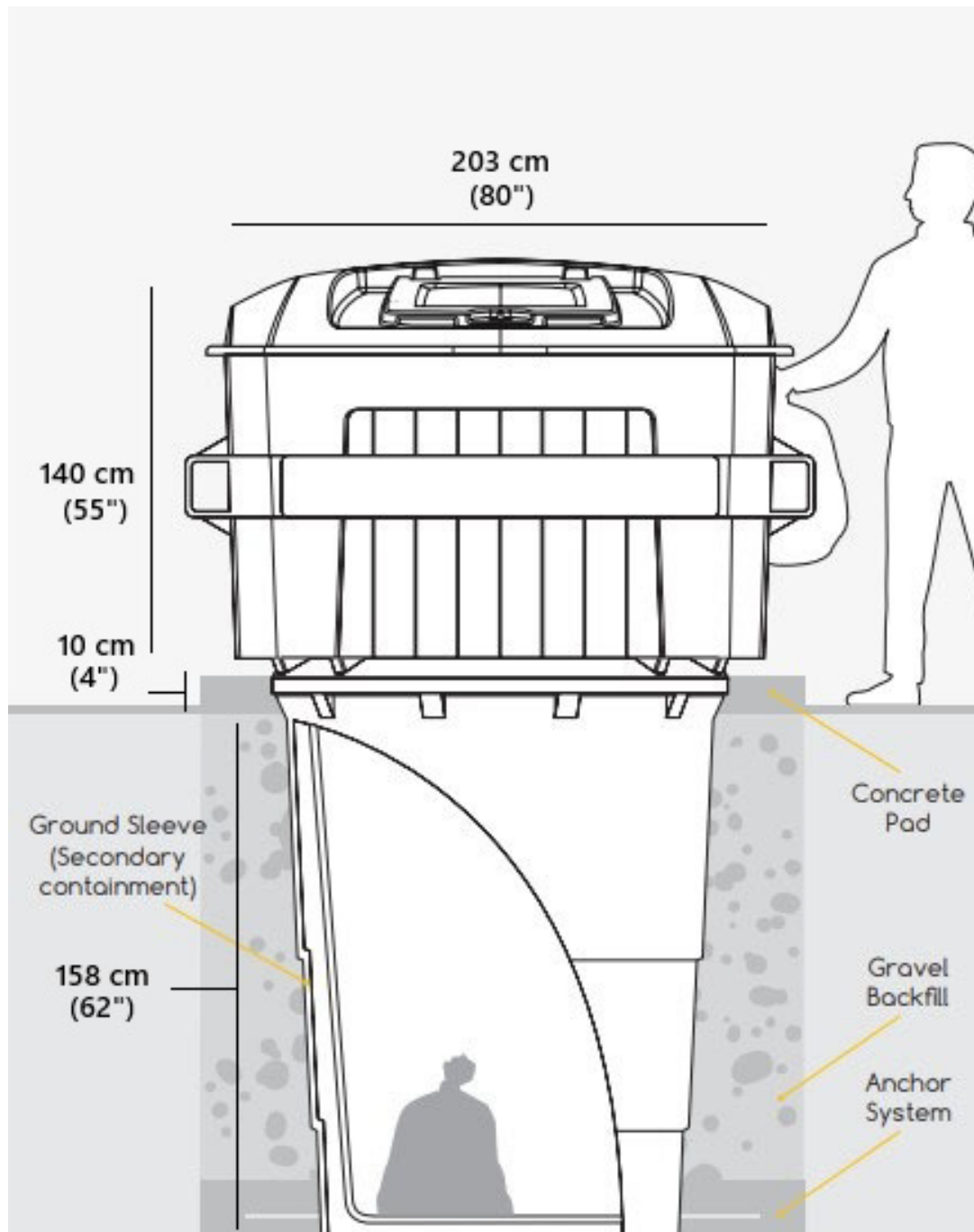


Figure 14. Illustration of an In-ground waste container system with approximate dimensions.

Note: Diagram depicts an Earth Bin® container. Dimensions shown are nominal and may vary by manufacturer.

