

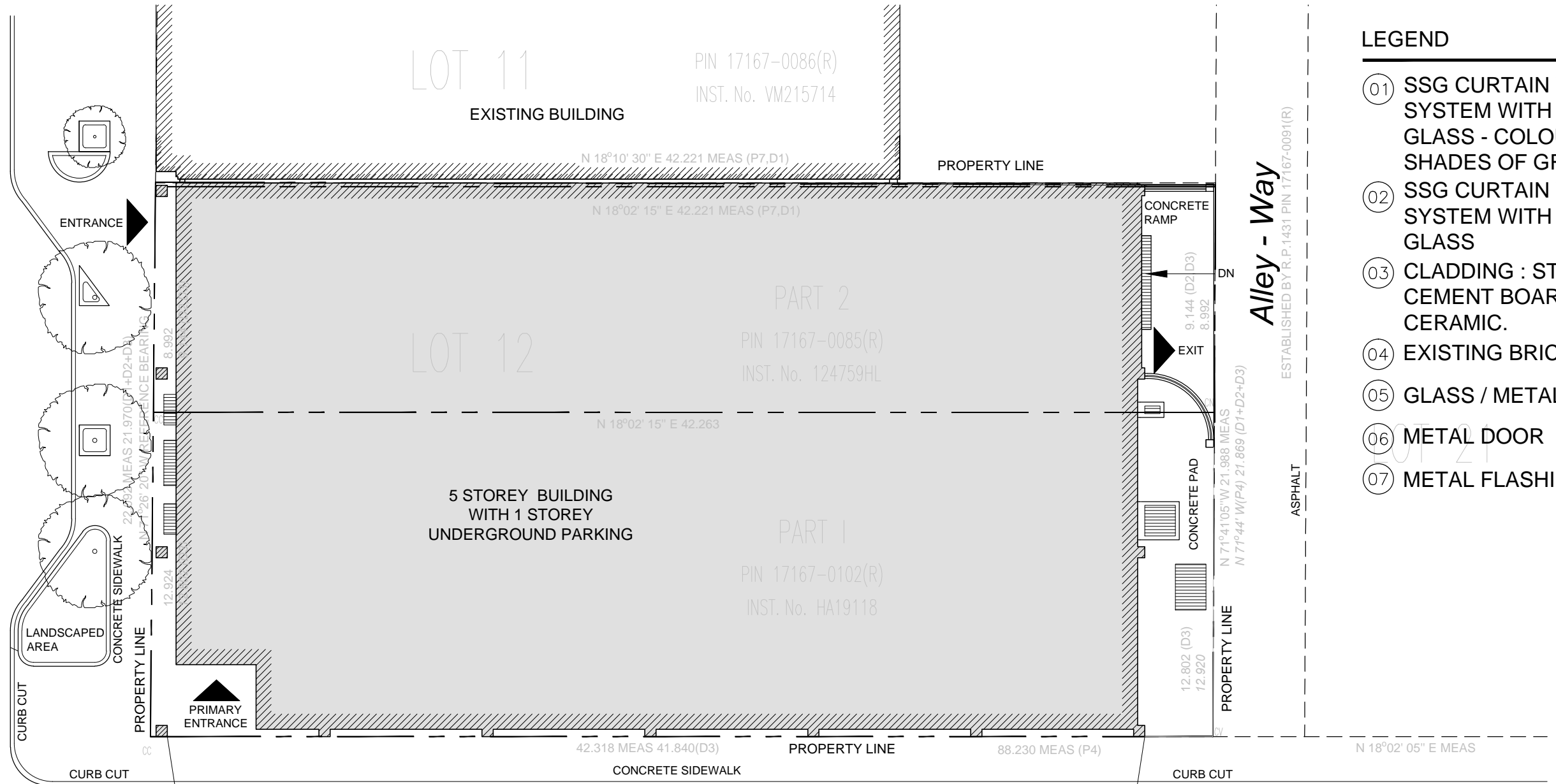


OFFICE BUILDING  
PROJECT # 14-109  
46-50 KING ST. EAST  
HAMILTON, ON  
ISSUED FOR INFORMATION  
MARCH 17, 2015



**King Street East**

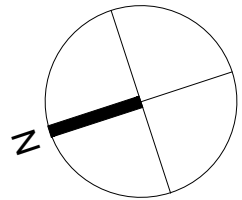
CONFIRMED BY BA-784, REGISTERED AS 400465AB  
PIN 17167-0105 (R)  
ASPHALT PAVEMENT

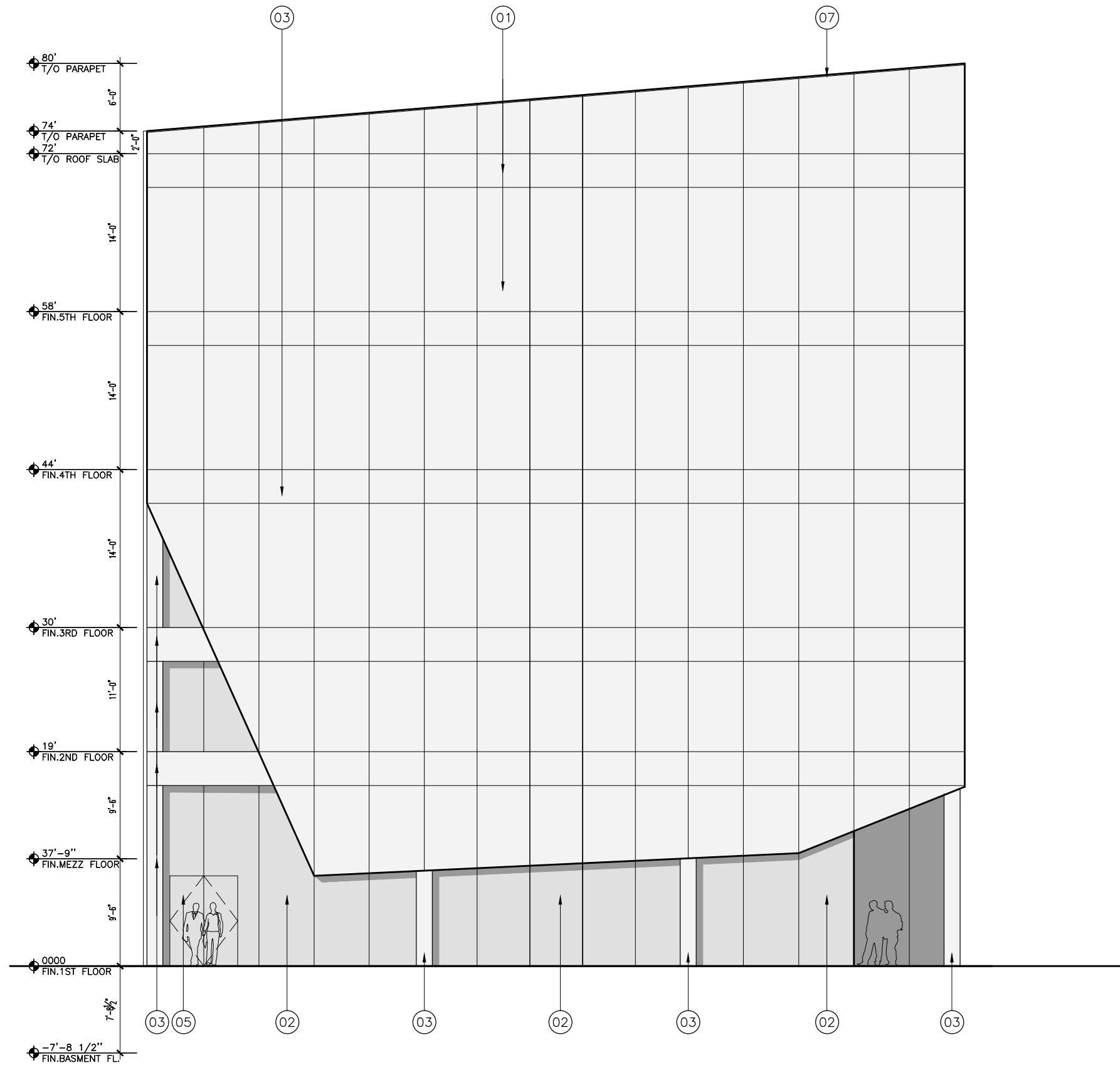


- LEGEND**
- ① SSG CURTAIN WALL SYSTEM WITH TINTED GLASS - COLOUR : SHADES OF GRAY
  - ② SSG CURTAIN WALL SYSTEM WITH CLEAR GLASS
  - ③ CLADDING : STONE, CEMENT BOARD OR CERAMIC.
  - ④ EXISTING BRICK VENEER
  - ⑤ GLASS / METAL DOOR
  - ⑥ METAL DOOR
  - ⑦ METAL FLASHING

**Hugson Street South**

ESTABLISHED BY R.P.1431  
PIN 17167-0081 (R)  
ASPHALT PAVEMENT



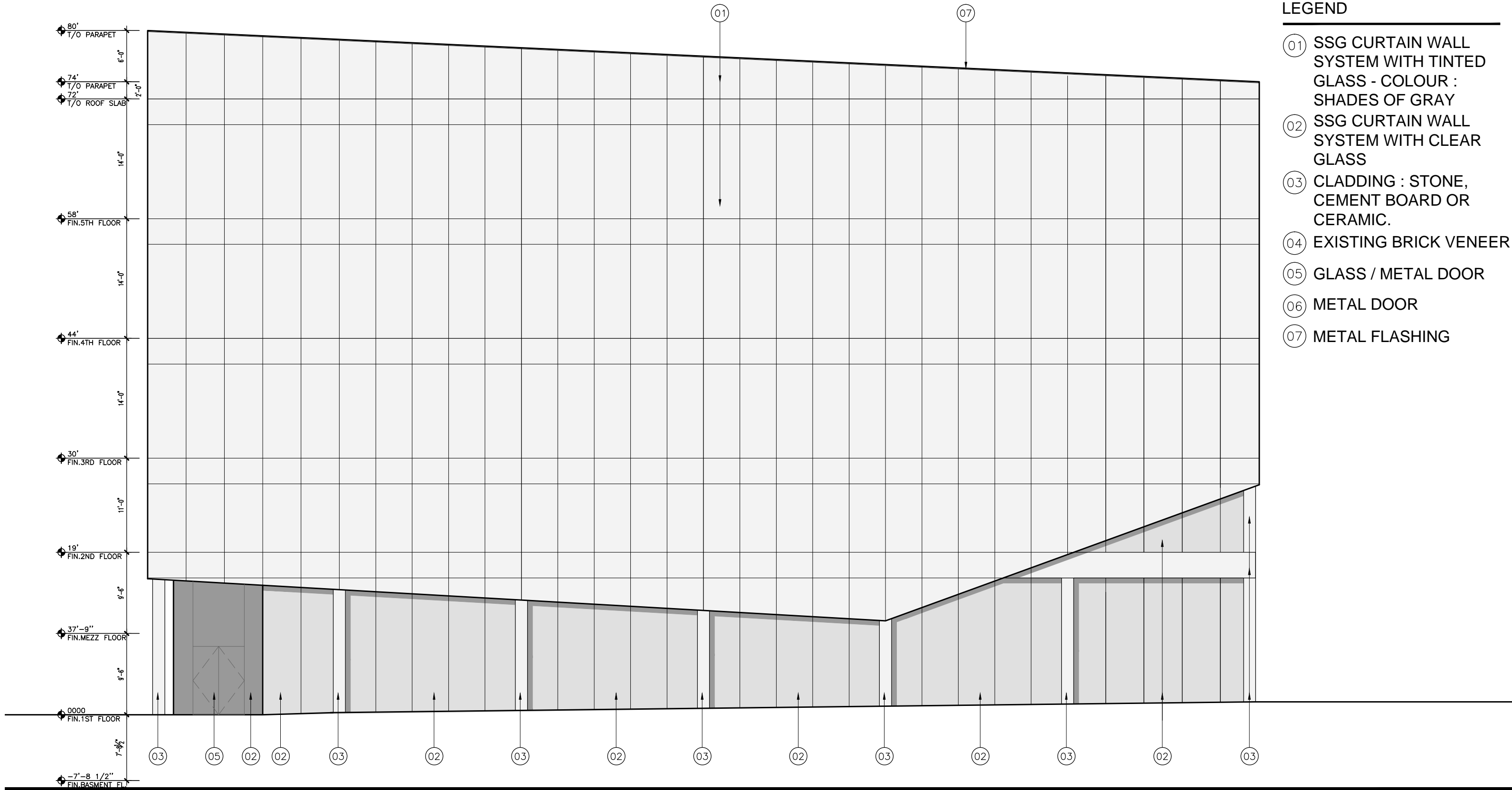


**LEGEND**

- ① SSG CURTAIN WALL SYSTEM WITH TINTED GLASS - COLOUR : SHADES OF GRAY
- ② SSG CURTAIN WALL SYSTEM WITH CLEAR GLASS
- ③ CLADDING : STONE, CEMENT BOARD OR CERAMIC.
- ④ EXISTING BRICK VENEER
- ⑤ GLASS / METAL DOOR
- ⑥ METAL DOOR
- ⑦ METAL FLASHING

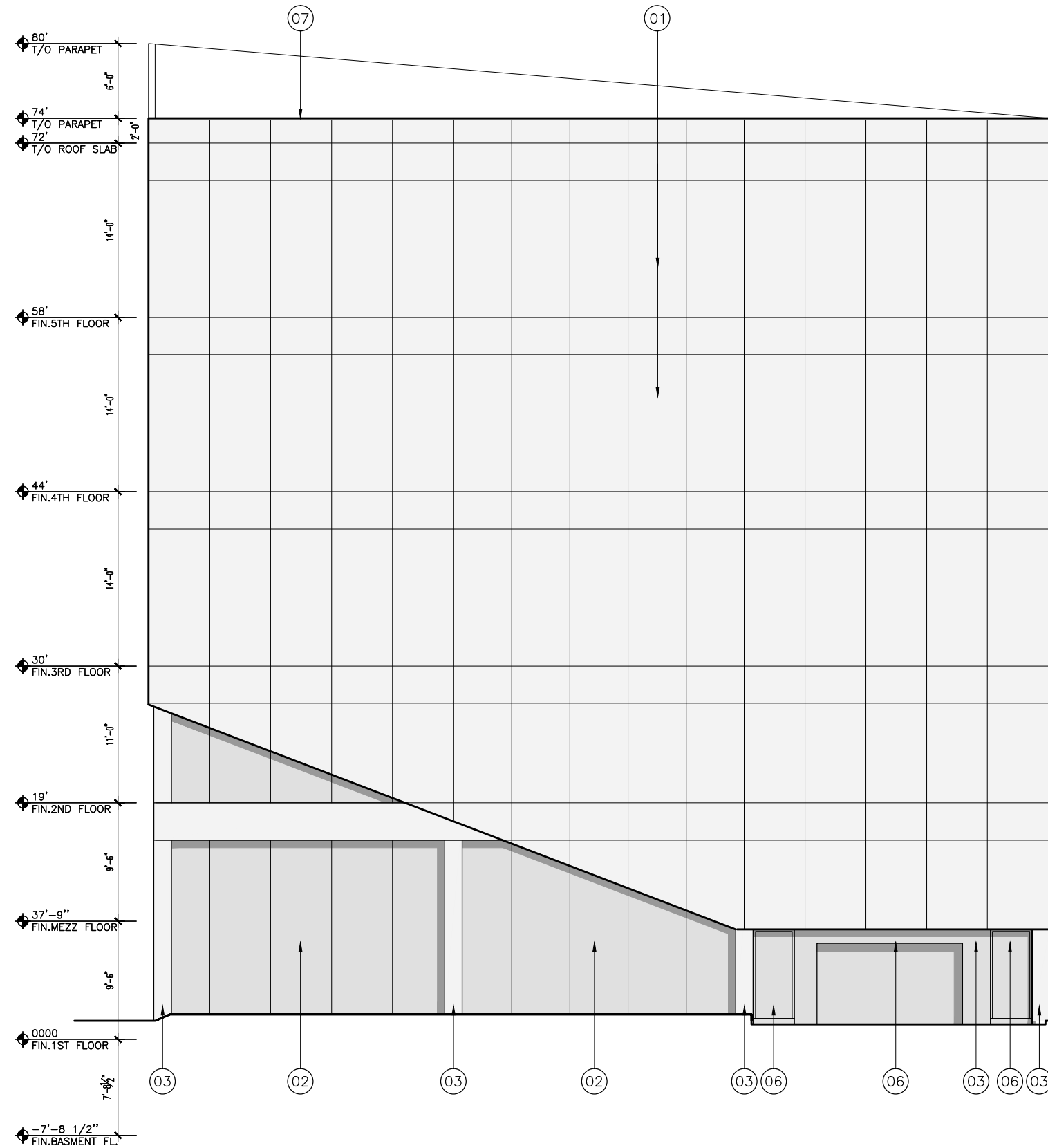
**LEGEND**

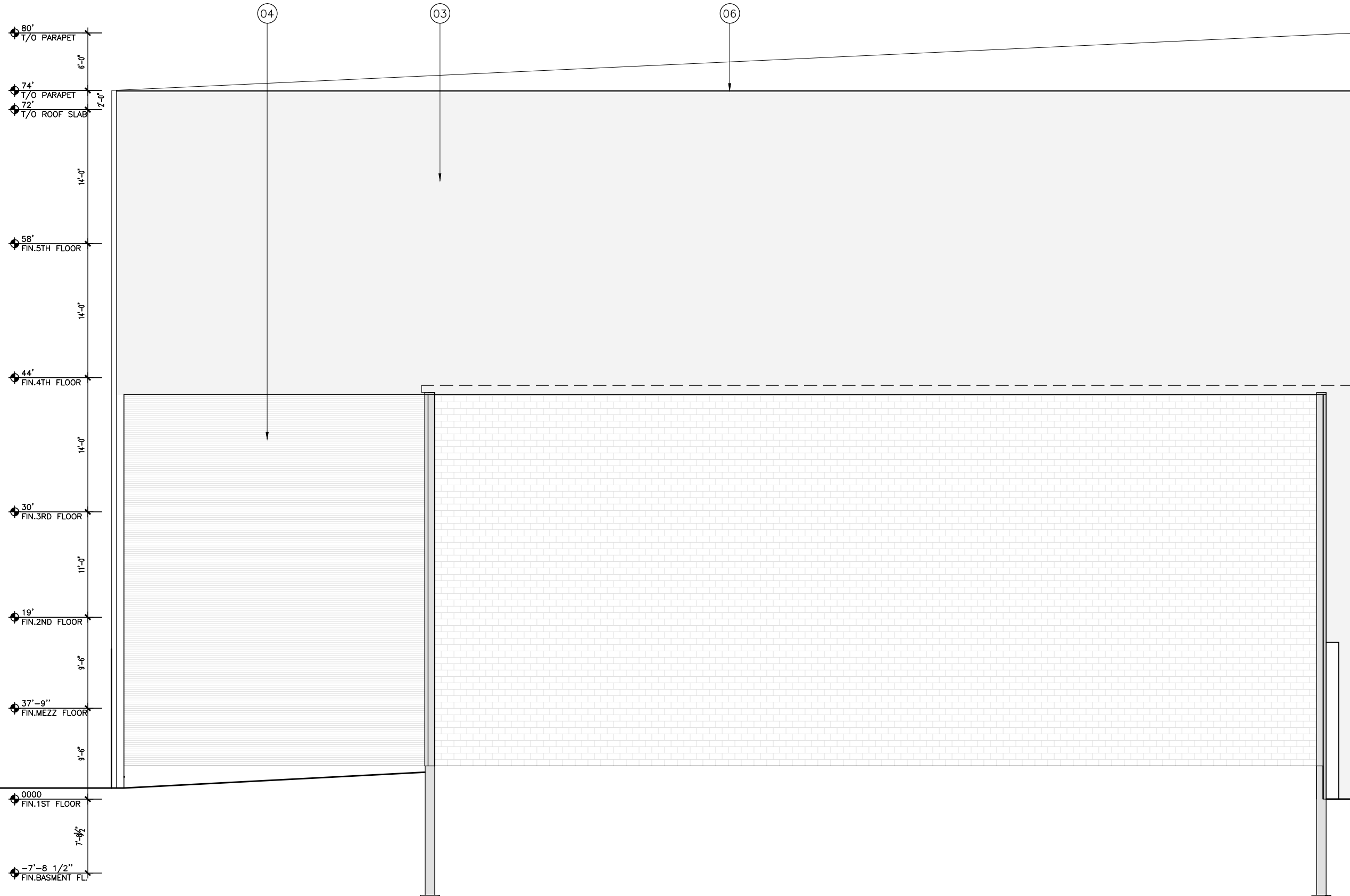
- ① SSG CURTAIN WALL SYSTEM WITH TINTED GLASS - COLOUR : SHADES OF GRAY
- ② SSG CURTAIN WALL SYSTEM WITH CLEAR GLASS
- ③ CLADDING : STONE, CEMENT BOARD OR CERAMIC.
- ④ EXISTING BRICK VENEER
- ⑤ GLASS / METAL DOOR
- ⑥ METAL DOOR
- ⑦ METAL FLASHING



**LEGEND**

- ① SSG CURTAIN WALL SYSTEM WITH TINTED GLASS - COLOUR : SHADES OF GRAY
- ② SSG CURTAIN WALL SYSTEM WITH CLEAR GLASS
- ③ CLADDING : STONE, CEMENT BOARD OR CERAMIC.
- ④ EXISTING BRICK VENEER
- ⑤ GLASS / METAL DOOR
- ⑥ METAL DOOR
- ⑦ METAL FLASHING





**LEGEND**

- ① SSG CURTAIN WALL SYSTEM WITH TINTED GLASS - COLOUR : SHADES OF GRAY
- ② SSG CURTAIN WALL SYSTEM WITH CLEAR GLASS
- ③ CLADDING : STONE, CEMENT BOARD OR CERAMIC.
- ④ EXISTING BRICK VENEER
- ⑤ GLASS / METAL DOOR
- ⑥ METAL DOOR
- ⑦ METAL FLASHING