

Hamilton

Mailing Address:
City Centre, 77 James Street North, Suite 400
Hamilton, ON L8R 2K3,
www.hamilton.ca

Planning and Economic Development Department

Planning Division

Physical Address: City Centre, 77 James Street North, Suite 400

Phone: 905-546-2424 Ext.4348 Fax: 905-546-4202

Paul.Toffoletti@hamilton.ca

July 4, 2013

FILE: 221-S
25T-200904

Metrus Development Inc.
c/o J. Laudadio
1700 Langstaff Road, Suite 2003
Concord, ON, L4K 3S3

J. D. Barnes Limited
c/o Steve Balaban
401 Wheelabrator Way, Suite A
Milton, ON, L9T 3C1

KLM Planning Partners Inc.
64 Jardin Drive, Unit 1B
Concord, ON, L4K 3P3

**NOTICE OF MUNICIPAL ADDRESSES
FOR REGISTERED PLAN 62M-1190 "MC2 Homes Phase 3"**

Attached is a table of the municipal addresses that have been assigned, along with a copy of the above Registered Plan for this subdivision located in the former Town of Flamborough.

**NOTE: BUILDERS ARE REMINDED OF THEIR OBLIGATION TO INSTALL
ADDRESS NUMBERS ON ALL NEW DWELLINGS.**

Please update your records accordingly. Should you have any questions regarding the above, please contact Paul Toffoletti at 905-546-2424 Ext.4348.

Jason Thompson, MCIP, RPP
Senior Project Manager, Growth Planning Section,
Planning and Economic Development Department.

c.c.

Electrical Safety Authority
MPAC
City of Hamilton
Source Shaw Cogeco Cable
Hydro One
Horizon Utilities
Canada Post
Angus GeoSolutions Inc.
Blue Line Taxi

Union Gas
Fire and Police
Bell Canada Eng.
Bell Street Guide
Bell Canada (911)
Map Mobility
DMTI Spatial
DARTS

Ham.-Went. School Boards
(Public & Separate)
Canada Mortgage and Housing Corp.
Hamilton CACC Ambulance Dispatch
Hamilton-Burlington District Real Estate
Canadian Cartographic Corp.
Hamilton Automobile Club
Telus

62M-1190	MC2 Homes Phase 3
Lot	Address
1	64 SPRINGVIEW DRIVE
2	69 SPRINGVIEW DRIVE
3	73 SPRINGVIEW DRIVE
4	77 SPRINGVIEW DRIVE
5	81 SPRINGVIEW DRIVE
6	85 SPRINGVIEW DRIVE
7	89 SPRINGVIEW DRIVE
8	93 SPRINGVIEW DRIVE
9	97 SPRINGVIEW DRIVE
10	101 SPRINGVIEW DRIVE
11	109 SPRINGVIEW DRIVE
12	113 SPRINGVIEW DRIVE
13	117 SPRINGVIEW DRIVE
14	121 SPRINGVIEW DRIVE
15	125 SPRINGVIEW DRIVE
16	129 SPRINGVIEW DRIVE
17	133 SPRINGVIEW DRIVE
BLOCK 19	60 SPRINGVIEW DRIVE
BLOCK 20	88 SPRINGVIEW DRIVE
BLOCK 21	92 SPRINGVIEW DRIVE
BLOCK 22	96 SPRINGVIEW DRIVE
BLOCK 23	100 SPRINGVIEW DRIVE
BLOCK 24	108 SPRINGVIEW DRIVE
BLOCK 25	112 SPRINGVIEW DRIVE
BLOCK 26	116 SPRINGVIEW DRIVE
BLOCK 27	120 SPRINGVIEW DRIVE
BLOCK 28	124 SPRINGVIEW DRIVE
BLOCK 29	128 SPRINGVIEW DRIVE
BLOCK 30	132 SPRINGVIEW DRIVE
BLOCK 31	136 SPRINGVIEW DRIVE
BLOCK 32	140 SPRINGVIEW DRIVE
BLOCK 33	144 SPRINGVIEW DRIVE
BLOCK 34	161 PARKSIDE DRIVE

25T 200904 C

PLAN 62M-1190

I CERTIFY THAT THIS PLAN IS REGISTERED IN THE LAND REGISTRY OFFICE FOR THE LAND TITLES DIVISION OF WENTWORTH (S. 62) AT 10:30 AM O'CLOCK ON THE 13TH DAY OF MAY, 2013 AND ENTERED IN THE PARCEL REGISTER FOR PROPERTY IDENTIFIED 17511-0363 (LT).

AND THE REQUIRED CONSENTS ARE REGISTERED AS PLAN DOCUMENT NO. WE 691147

C. LANGRISH
 REPRESENTATIVE FOR THE LAND REGISTRAR

THIS PLAN COMPRISES PART OF PIN 1751-0363 (LT).

ALL OF LOTS 1 TO 17, ALL OF BLOCKS 16 TO 36 AND ALL OF SPRINGVIEW DRIVE SUBJECT TO AN EASEMENT AS IN INSTRUMENT NO. WE473770

ALL OF BLOCK 34, ALL OF BLOCK 35 AND PART OF SPRINGVIEW DRIVE SUBJECT TO AN EASEMENT AS IN INSTRUMENT NO. WE43666.

APPROVAL CERTIFICATE

APPROVED UNDER SECTION 8 OF THE PLANNING ACT REG. 2008/01 AS AMENDED BY THE GENERAL MANAGER OF PLANNING AND ECONOMIC DEVELOPMENT DEPARTMENT OF THE CITY OF HAMILTON UNDER THE AUTHORITY OF BY-LAW 07-323

THIS 8TH DAY OF MAY, 2013

Lucy Powell
 GENERAL MANAGER, PLANNING AND ECONOMIC DEVELOPMENT
 CITY OF HAMILTON

PLAN OF SUBDIVISION OF PART OF LOT 10 CONCESSION 4 GEOGRAPHIC TOWNSHIP OF EAST FLAMBOROUGH NOW IN THE CITY OF HAMILTON

SCALE: 1:1750

J. D. BARNES LIMITED

OWNER'S CERTIFICATE

THIS IS TO CERTIFY THAT:

1. LOTS 1 TO 17, BOTH INCLUSIVE, BLOCKS 16 TO 36, BOTH INCLUSIVE, THE STREET, NAMELY SPRINGVIEW DRIVE, THE STREET NAMED BLOCK 16 AND THE LINES, NAMELY BLOCKS 37 AND 38 AND HAVE BEEN Laid out in accordance with our instructions.

2. THE STREETS AND STREET NAMED AND LINES ARE HEREBY DEDICATED TO CITY OF HAMILTON AS PUBLIC HIGHWAYS.

DATED THIS 13TH DAY OF MAY, 2013

MC2 HOMES INC.

Michael J. McCall
 ALLEGED REPRESENTATIVE OF THE CORPORATION
 HAVE AUTHORITY TO SIGN THE CORPORATION

NOTES

SERVICES ARE PROVIDED FROM OBSERVED REFERENCE POINTS (ORHP) A AND B BY REAL-TIME NETWORK OBSERVATIONS, DTM ZONE 17, NAD83 (CSRS/RSR04).

INTEGRATION DATA

POINT ID	EASTING	NORTHING
ORHP A	687 703.749	4 788 353.080
ORHP B	559 016.655	4 790 047.350

COORDINATES CANNOT, IN THEMSELVES, BE USED TO RE-ESTABLISH CORNERS OR CORRELATIONS SHOWN ON THE PLAN.

COORDINATE VALUES ARE TO A URBAN ACCURACY IN ACCORDANCE WITH SECTION 14.10 OF OREGON 26/00.

DISTANCES ON THIS PLAN ARE GROUND AND CAN BE CONVERTED TO GRID BY MULTIPLYING BY THE COGNATE SCALE FACTOR OF 0.9999440.

DISTANCES AND COORDINATES SHOWN ON THIS PLAN ARE IN METRES AND CAN BE CONVERTED TO FEET BY DIVIDING BY 0.3048.

■ DENOTES SURVEY MONUMENT FOUND
 □ DENOTES SURVEY MONUMENT SET
 SSB DENOTES SHORT STANDARD IRON BAR
 SSB DENOTES SHORT STANDARD IRON BAR
 WIT DENOTES WITNESS
 H&S DENOTES H&S
 (200) DENOTES S.W. WOODS O.S.
 (244) DENOTES A.T. INCL. O.S.
 (177) DENOTES A.Z. CLARKE O.S.
 RTI DENOTES REGISTERED PLAN 62M-1063

SURVEY MONUMENTS FOUND ARE J.D. BARNES LIMITED, UNLESS OTHERWISE NOTED.
 SURVEY MONUMENTS PLANTED ARE HIGH BARS UNLESS OTHERWISE NOTED.
 DISTANCES SHOWN ON CURVED LINES ARE ARC MEASUREMENTS.

SURVEYOR'S CERTIFICATE

I CERTIFY THAT:

1. THIS SURVEY AND PLAN ARE CORRECT AND IN ACCORDANCE WITH THE SURVEY ACT AND THE SURVEYORS ACT AND THE LAND TITLES ACT AND THE REGULATIONS MADE UNDER THEM.

2. THE SURVEY WAS COMPLETED ON THE 20TH DAY OF NOVEMBER 2012.

DATE: *March 4, 2013*

Steele
 S.T. BALMER
 ONTARIO LAND SURVEYOR

J.D. BARNES LIMITED

REGISTERED PROFESSIONAL SURVEYORS

1000 SHEPPARD AVENUE EAST, SUITE 100, SCARBOROUGH, ONTARIO M1S 1T6

T: (416) 291-8888 F: (416) 291-3333 WWW.JDBARNES.COM

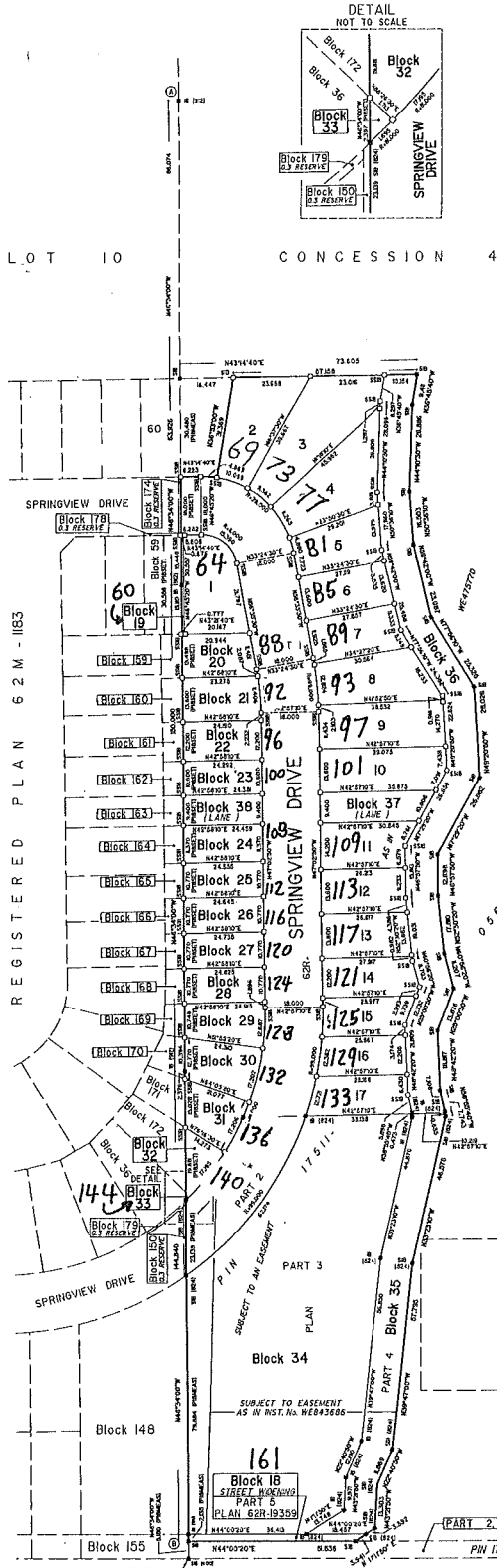
DRAWN BY: J. WALSH CSD CHECKED BY: S. J. J. REFERENCE NO.: 08-30-115-01-A

FILE: J:\2012\115-01-A\115-01-A.dwg PLOT: NOVEMBER 2012

Phase Three PLOT: 15 MAR 2013

DETAIL NOT TO SCALE

LOT/BLOCK	RADIUS	ARC	CHORD	BEARING
LOT 1	11,000	16,390	14,168	N83°19'40"E
LOT 2	29,000	10,050	10,048	N83°02'20"E
LOT 3	29,000	9,382	9,321	N82°15'00"E
LOT 4	29,000	11,256	11,184	N87°21'40"W
LOT 5	29,000	4,880	4,874	N01°24'40"W
LOT 6	99,000	1,265	1,265	N85°08'20"W
LOT 7	99,000	12,854	12,815	N51°08'30"W
LOT 8	99,000	2,103	2,103	N47°39'20"W
LOT 9	99,000	12,354	12,354	N54°19'20"W
LOT 10	99,000	8,471	8,467	N50°43'50"W
LOT 11	81,000	2,087	2,085	N55°51'10"W
LOT 12	81,000	11,406	11,397	N51°04'00"W
LOT 13	81,000	12,487	12,474	N42°33'30"W
LOT 14	81,000	17,206	17,174	N19°49'10"W
LOT 15	81,000	17,195	17,163	N07°39'10"W
LOT 16	81,000	11,465	11,455	N00°08'20"W
LOT 17	99,000	62,179	61,162	N09°03'20"W
LOT 18	28,000	4,859	4,853	N48°09'10"E



REGISTERED PLAN 62M-1183

CONCESSION 4

PART 1 PLAN 62R-16557

PART 2 PLAN 62R-16557

PART 3 PLAN 62R-18615

PART 4 PLAN 1751-0163 (LT)

PART 5 PLAN 1751-0163 (LT)

PART 6 PLAN 1751-0163 (LT)

PART 7 PLAN 1751-0163 (LT)

PART 8 PLAN 1751-0163 (LT)

PART 9 PLAN 1751-0163 (LT)

PART 10 PLAN 1751-0163 (LT)

PART 11 PLAN 1751-0163 (LT)

PART 12 PLAN 1751-0163 (LT)

PART 13 PLAN 1751-0163 (LT)

PART 14 PLAN 1751-0163 (LT)

PART 15 PLAN 1751-0163 (LT)

PART 16 PLAN 1751-0163 (LT)

PART 17 PLAN 1751-0163 (LT)

PART 18 PLAN 1751-0163 (LT)

PART 19 PLAN 1751-0163 (LT)

PART 20 PLAN 1751-0163 (LT)

PART 21 PLAN 1751-0163 (LT)

PART 22 PLAN 1751-0163 (LT)

PART 23 PLAN 1751-0163 (LT)

PART 24 PLAN 1751-0163 (LT)

PART 25 PLAN 1751-0163 (LT)

PART 26 PLAN 1751-0163 (LT)

PART 27 PLAN 1751-0163 (LT)

PART 28 PLAN 1751-0163 (LT)

PART 29 PLAN 1751-0163 (LT)

PART 30 PLAN 1751-0163 (LT)

PART 31 PLAN 1751-0163 (LT)

PART 32 PLAN 1751-0163 (LT)

PART 33 PLAN 1751-0163 (LT)

PART 34 PLAN 1751-0163 (LT)

PART 35 PLAN 1751-0163 (LT)

PART 36 PLAN 1751-0163 (LT)

PART 37 PLAN 1751-0163 (LT)

PART 38 PLAN 1751-0163 (LT)

PART 39 PLAN 1751-0163 (LT)

PART 40 PLAN 1751-0163 (LT)

PART 41 PLAN 1751-0163 (LT)

PART 42 PLAN 1751-0163 (LT)

PART 43 PLAN 1751-0163 (LT)

PART 44 PLAN 1751-0163 (LT)

PART 45 PLAN 1751-0163 (LT)

PART 46 PLAN 1751-0163 (LT)

PART 47 PLAN 1751-0163 (LT)

PART 48 PLAN 1751-0163 (LT)

PART 49 PLAN 1751-0163 (LT)

PART 50 PLAN 1751-0163 (LT)

PART 51 PLAN 1751-0163 (LT)

PART 52 PLAN 1751-0163 (LT)

PART 53 PLAN 1751-0163 (LT)

PART 54 PLAN 1751-0163 (LT)

PART 55 PLAN 1751-0163 (LT)

PART 56 PLAN 1751-0163 (LT)

PART 57 PLAN 1751-0163 (LT)

PART 58 PLAN 1751-0163 (LT)

PART 59 PLAN 1751-0163 (LT)

PART 60 PLAN 1751-0163 (LT)

PART 61 PLAN 1751-0163 (LT)

PART 62 PLAN 1751-0163 (LT)

PART 63 PLAN 1751-0163 (LT)

PART 64 PLAN 1751-0163 (LT)

PART 65 PLAN 1751-0163 (LT)

PART 66 PLAN 1751-0163 (LT)

PART 67 PLAN 1751-0163 (LT)

PART 68 PLAN 1751-0163 (LT)

PART 69 PLAN 1751-0163 (LT)

PART 70 PLAN 1751-0163 (LT)

PART 71 PLAN 1751-0163 (LT)

PART 72 PLAN 1751-0163 (LT)

PART 73 PLAN 1751-0163 (LT)

PART 74 PLAN 1751-0163 (LT)

PART 75 PLAN 1751-0163 (LT)

PART 76 PLAN 1751-0163 (LT)

PART 77 PLAN 1751-0163 (LT)

PART 78 PLAN 1751-0163 (LT)

PART 79 PLAN 1751-0163 (LT)

PART 80 PLAN 1751-0163 (LT)

PART 81 PLAN 1751-0163 (LT)

PART 82 PLAN 1751-0163 (LT)

PART 83 PLAN 1751-0163 (LT)

PART 84 PLAN 1751-0163 (LT)

PART 85 PLAN 1751-0163 (LT)

PART 86 PLAN 1751-0163 (LT)

PART 87 PLAN 1751-0163 (LT)

PART 88 PLAN 1751-0163 (LT)

PART 89 PLAN 1751-0163 (LT)

PART 90 PLAN 1751-0163 (LT)

PART 91 PLAN 1751-0163 (LT)

PART 92 PLAN 1751-0163 (LT)

PART 93 PLAN 1751-0163 (LT)

PART 94 PLAN 1751-0163 (LT)

PART 95 PLAN 1751-0163 (LT)

PART 96 PLAN 1751-0163 (LT)

PART 97 PLAN 1751-0163 (LT)

PART 98 PLAN 1751-0163 (LT)

PART 99 PLAN 1751-0163 (LT)

PART 100 PLAN 1751-0163 (LT)

PART 101 PLAN 1751-0163 (LT)

PART 102 PLAN 1751-0163 (LT)

PART 103 PLAN 1751-0163 (LT)

PART 104 PLAN 1751-0163 (LT)

PART 105 PLAN 1751-0163 (LT)

PART 106 PLAN 1751-0163 (LT)

PART 107 PLAN 1751-0163 (LT)

PART 108 PLAN 1751-0163 (LT)

PART 109 PLAN 1751-0163 (LT)

PART 110 PLAN 1751-0163 (LT)

PART 111 PLAN 1751-0163 (LT)

PART 112 PLAN 1751-0163 (LT)

PART 113 PLAN 1751-0163 (LT)

PART 114 PLAN 1751-0163 (LT)

PART 115 PLAN 1751-0163 (LT)

PART 116 PLAN 1751-0163 (LT)

PART 117 PLAN 1751-0163 (LT)

PART 118 PLAN 1751-0163 (LT)

PART 119 PLAN 1751-0163 (LT)

PART 120 PLAN 1751-0163 (LT)

PART 121 PLAN 1751-0163 (LT)

PART 122 PLAN 1751-0163 (LT)

PART 123 PLAN 1751-0163 (LT)

PART 124 PLAN 1751-0163 (LT)

PART 125 PLAN 1751-0163 (LT)

PART 126 PLAN 1751-0163 (LT)

PART 127 PLAN 1751-0163 (LT)

PART 128 PLAN 1751-0163 (LT)

PART 129 PLAN 1751-0163 (LT)

PART 130 PLAN 1751-0163 (LT)

PART 131 PLAN 1751-0163 (LT)

PART 132 PLAN 1751-0163 (LT)

PART 133 PLAN 1751-0163 (LT)

PART 134 PLAN 1751-0163 (LT)

PART 135 PLAN 1751-0163 (LT)

PART 136 PLAN 1751-0163 (LT)

PART 137 PLAN 1751-0163 (LT)

PART 138 PLAN 1751-0163 (LT)

PART 139 PLAN 1751-0163 (LT)

PART 140 PLAN 1751-0163 (LT)

PART 141 PLAN 1751-0163 (LT)

PART 142 PLAN 1751-0163 (LT)

PART 143 PLAN 1751-0163 (LT)

PART 144 PLAN 1751-0163 (LT)

PART 145 PLAN 1751-0163 (LT)

PART 146 PLAN 1751-0163 (LT)

PART 147 PLAN 1751-0163 (LT)

PART 148 PLAN 1751-0163 (LT)

PART 149 PLAN 1751-0163 (LT)

PART 150 PLAN 1751-0163 (LT)

PART 151 PLAN 1751-0163 (LT)

PART 152 PLAN 1751-0163 (LT)

PART 153 PLAN 1751-0163 (LT)

PART 154 PLAN 1751-0163 (LT)

PART 155 PLAN 1751-0163 (LT)

PART 156 PLAN 1751-0163 (LT)

PART 157 PLAN 1751-0163 (LT)

PART 158 PLAN 1751-0163 (LT)

PART 159 PLAN 1751-0163 (LT)

PART 160 PLAN 1751-0163 (LT)

PART 161 PLAN 1751-0163 (LT)

PART 162 PLAN 1751-0163 (LT)

PART 163 PLAN 1751-0163 (LT)

PART 164 PLAN 1751-0163 (LT)

PART 165 PLAN 1751-0163 (LT)

PART 166 PLAN 1751-0163 (LT)

PART 167 PLAN 1751-0163 (LT)

PART 168 PLAN 1751-0163 (LT)

PART 169 PLAN 1751-0163 (LT)

PART 170 PLAN 1751-0163 (LT)

PART 171 PLAN 1751-0163 (LT)

PART 172 PLAN 1751-0163 (LT)

PART 173 PLAN 1751-0163 (LT)

PART 174 PLAN 1751-0163 (LT)

PART 175 PLAN 1751-0163 (LT)

PART 176 PLAN 1751-0163 (LT)

PART 177 PLAN 1751-0163 (LT)

PART 178 PLAN 1751-0163 (LT)

PART 179 PLAN 1751-0163 (LT)

PART 180 PLAN 1751-0163 (LT)

PART 181 PLAN 1751-0163 (LT)

PART 182 PLAN 1751-0163 (LT)

PART 183 PLAN 1751-0163 (LT)

PART 184 PLAN