



Mailing Address:
 Hamilton City Hall
 71 Main Street West, 6th Floor
 Hamilton, ON L8P 4Y5
 www.hamilton.ca

Planning and Economic Development Department
 Growth Management Division
 Physical Address: 71 Main Street West, 6th Floor
 Phone: 905-546-2424 Ext.4237 Fax: 905-546-4202
 Paul.Toffoletti@hamilton.ca

Hamilton

March 27, 2014

FILE: 221-C, 221-P
 25T-200719

Urbex Engineering
 c/oAngelo Cameracci
 161 Rebecca Street
 Hamilton, ON, L8R 1B9

A. T. McLaren Ltd.
 69 John Street South, Suite 230
 Hamilton, ON, L8N 2B9

NOTICE OF MUNICIPAL ADDRESSES

FOR REGISTERED PLAN 62M-1203 "ADAM ESTATES PHASE 3".

Attached is a table of the municipal addresses that have been assigned, along with a copy of the above Registered Plan for this subdivision located in the former City of Hamilton.

NOTE: BUILDERS ARE REMINDED OF THEIR OBLIGATION TO INSTALL ADDRESS NUMBERS ON ALL NEW DWELLINGS.

Please update your records accordingly. Should you have any questions regarding the above, please contact Paul Toffoletti at 905-546-2424 Ext. 4348.

Jason Thompson, MCIP, RPP
 Senior Project Manager, Growth Planning Section,
 Growth Management Division, Planning and Economic Development Department.

c.c.

Electrical Safety Authority
 MPAC
 City of Hamilton
 Source Cable
 Horizon Utilities
 Canada Post
 Angus GeoSolutions Inc.
 Blue Line Taxi

Union Gas
 Fire and Police
 Bell Canada Eng.
 Bell Street Guide
 Bell Canada (911)
 Map Mobility
 DMTI Spatial
 DARTS

Ham.-Went. School Boards
 (Public & Separate)
 Canada Mortgage and Housing Corp.
 Hamilton CACC Ambulance Dispatch
 Hamilton-Burlington District Real Estate
 Canadian Cartographic Corp.
 Hamilton Automobile Club
 Telus

62M-1203	ADAM ESTATES PHASE 3
Lot	Address
1	48 CHARTWELL CIRCLE
2	52 CHARTWELL CIRCLE
3	56 CHARTWELL CIRCLE
4	60 CHARTWELL CIRCLE
5	64 CHARTWELL CIRCLE
6	68 CHARTWELL CIRCLE
7	72 CHARTWELL CIRCLE
8	3 PINEMEADOW DRIVE
9	7 PINEMEADOW DRIVE
10	11 PINEMEADOW DRIVE
11	15 PINEMEADOW DRIVE
12	19 PINEMEADOW DRIVE
13	23 PINEMEADOW DRIVE
14	27 PINEMEADOW DRIVE
15	31 PINEMEADOW DRIVE
16	35 PINEMEADOW DRIVE
17	39 PINEMEADOW DRIVE
18	43 PINEMEADOW DRIVE
19	47 PINEMEADOW DRIVE
20	40 PINEMEADOW DRIVE
21	36 PINEMEADOW DRIVE
22	32 PINEMEADOW DRIVE
23	28 PINEMEADOW DRIVE
24	24 PINEMEADOW DRIVE
25	20 PINEMEADOW DRIVE
26	16 PINEMEADOW DRIVE
27	12 PINEMEADOW DRIVE
28	8 PINEMEADOW DRIVE
29	4 PINEMEADOW DRIVE
Block 30	44 PINEMEADOW DRIVE

PLAN OF SUBDIVISION
 OF PART OF
LOT 14
CONCESSION 7
 GEOGRAPHIC
 TOWNSHIP OF BARTON
 IN THE
CITY OF HAMILTON
 SCALE 1: 500 METRIC
 S.D. McLAREN O.L.R. - 8014

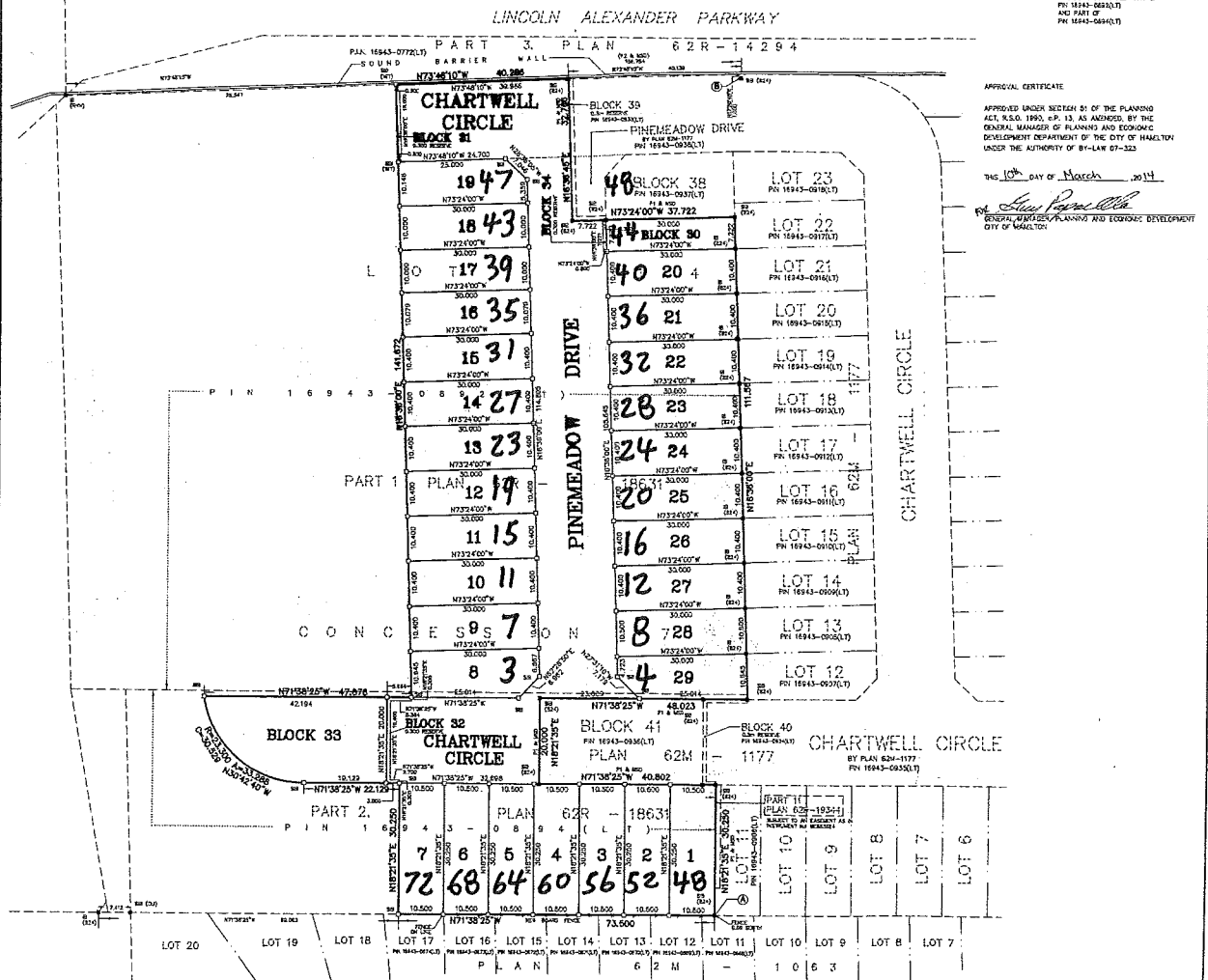
ADAM ESTATES PHASE 3

62M-1203

**ASSOCIATION OF ONTARIO
 LAND SURVEYORS
 PLAN REGISTRATION FORM
 1902152**

PLAN 62M-1203
 I HEREBY CERTIFY THAT THIS PLAN 62M-1203 IS REGISTERED IN THE LAND REGISTRY OFFICE FOR THE LAND TOWNSHIP DIVISION OF WESTWORTH AT _____ O'CLOCK ON THE _____ DAY OF _____ 2014, AND EXTENDED IN THE PARCEL REGISTER FOR PROPERTY IDENTIFIER _____ AND REQUIRED COORDINATES ARE REGISTERED AS PLAN DOCUMENT NO. _____

REPRESENTATIVE FOR LAND REGISTRY
 THIS PLAN COMPLETES PART OF PN 1643-0930(LT) AND PART OF PN 1643-0940(LT)



APPROVAL CERTIFICATE
 APPROVED UNDER SECTION 51 OF THE PLANNING ACT, R.S.O. 1990, c. P.13, AS AMENDED, BY THE GENERAL MANAGER OF PLANNING AND ECONOMIC DEVELOPMENT DEPARTMENT OF THE CITY OF HAMILTON UNDER THE AUTHORITY OF BY-LAW 87-232
 THIS 10th DAY OF March, 2014
John Chan
 GENERAL MANAGER, PLANNING AND ECONOMIC DEVELOPMENT
 CITY OF HAMILTON

OWNER'S CERTIFICATE:
 THIS IS TO CERTIFY THAT
 1. LOTS 1 TO 48, BLOCK 30, 31, 32, 33, 34, 35, 36, 37, 38, 39, 40, 41, 42, 43, 44, 45, 46, 47, 48, AND THE STRIPS ALONG CHARTWELL CIRCLE, BLOCK 30, 31, 32, 33, 34, 35, 36, 37, 38, 39, 40, 41, 42, 43, 44, 45, 46, 47, 48, AND THE STRIPS ALONG CHARTWELL CIRCLE, BLOCK 30, 31, 32, 33, 34, 35, 36, 37, 38, 39, 40, 41, 42, 43, 44, 45, 46, 47, 48, ARE SHOWN IN ACCORDANCE WITH OUR INSTRUMENT.
 2. THE EGRESS ARE NOW OPENED TO CITY OF HAMILTON AS PUBLIC HIGHWAYS.
 DOWNSHAW DRIVING INC.

MARCH 10, 2014
 DATE
John Chan
 JOHN CHAN - SECRETARY
 LEVINE THE SURVEYOR TO SIGN THE CERTIFICATE

LEGEND:
 B1 BOUNDARY BY MONUMENT FLAG
 B2 BOUNDARY BY MONUMENT
 B3 BOUNDARY BY MONUMENT AND SURVEY
 B4 BOUNDARY BY MONUMENT AND SURVEY AND MONUMENT
 B5 BOUNDARY BY MONUMENT AND SURVEY AND MONUMENT AND SURVEY
 B6 BOUNDARY BY MONUMENT AND SURVEY AND MONUMENT AND SURVEY AND MONUMENT
 B7 BOUNDARY BY MONUMENT AND SURVEY AND MONUMENT AND SURVEY AND MONUMENT AND SURVEY
 B8 BOUNDARY BY MONUMENT AND SURVEY AND MONUMENT AND SURVEY AND MONUMENT AND SURVEY AND MONUMENT
 B9 BOUNDARY BY MONUMENT AND SURVEY AND MONUMENT AND SURVEY AND MONUMENT AND SURVEY AND MONUMENT AND SURVEY
 B10 BOUNDARY BY MONUMENT AND SURVEY AND MONUMENT AND SURVEY AND MONUMENT AND SURVEY AND MONUMENT AND SURVEY AND MONUMENT
 B11 BOUNDARY BY MONUMENT AND SURVEY AND MONUMENT AND SURVEY AND MONUMENT AND SURVEY AND MONUMENT AND SURVEY AND MONUMENT AND SURVEY
 B12 BOUNDARY BY MONUMENT AND SURVEY AND MONUMENT AND SURVEY AND MONUMENT AND SURVEY AND MONUMENT AND SURVEY AND MONUMENT AND SURVEY AND MONUMENT

NOTE:
 DISTANCES ARE GIVEN AND CAN BE CONVERTED TO METERS BY MULTIPLYING BY THE COMBINED SCALE FACTOR OF 0.99997277

INTERSECTION DATA
 COORDINATES CANNOT BE THEMSELVES BE USED TO ESTABLISH CORNERS OF BOUNDARIES SHOWN ON THIS PLAN

BEARING NOTE:
 BEARINGS ARE GIVEN AND ARE REFERRED TO THE NA83 UTM CO-ORDINATE SYSTEM, ZONE 17, CENTRAL MERRIDIAN BY LONGITUDE AND ARE DERIVED FROM MONUMENTS
 02392030 N 4784409.017 E 687003.727
 02392040 N 4786161.723 E 592791.764

METRIC NOTE:
 DISTANCES SHOWN ON THIS PLAN ARE IN METERS AND CAN BE CONVERTED TO FEET BY DIVIDING BY 0.3048

SURVEYOR'S CERTIFICATE
 I HEREBY CERTIFY THAT THIS PLAN 62M-1203 IS REGISTERED IN THE LAND REGISTRY OFFICE FOR THE LAND TOWNSHIP DIVISION OF WESTWORTH AT _____ O'CLOCK ON THE _____ DAY OF _____ 2014, AND EXTENDED IN THE PARCEL REGISTER FOR PROPERTY IDENTIFIER _____ AND REQUIRED COORDINATES ARE REGISTERED AS PLAN DOCUMENT NO. _____

A.T. McLaren Limited
 LEGAL AND ENGINEERING SURVEYORS
 65 JOHN STREET SOUTH, SUITE 230
 HAMILTON, ONTARIO, L8N 2S9
 PHONE (905) 527-8856 FAX (905) 677-0032
 www.atmclaren.com