



Mailing Address:
 Hamilton City Hall
 71 Main Street West, 6th Floor
 Hamilton, ON L8P 4Y5
 www.hamilton.ca

Planning and Economic Development Department
 Growth Management Division
 Physical Address: 71 Main Street West, 6th Floor
 Phone: 905-546-2424 Ext.4237 Fax: 905-546-4202
 Paul.Toffoletti@hamilton.ca

Hamilton

July 25, 2014

FILE: 221-A, 221-C, 221-M, 221-S, 221-W
 25T-200803

Empire Communities (Stoney Creek) Ltd.
 125 Villarboit Crescent
 Vaughan, ON, L4K 4K2

Armstrong Planning
 156 Duncan Mill Road, Suite 6A
 Toronto, ON, M3B 3N2

B.A. Jacobs Ltd.
 152 Jackson Street East, Suite 102
 Hamilton, ON, L8N 1L3

**NOTICE OF MUNICIPAL ADDRESSES
 FOR REGISTERED PLAN 62M-1206 "VICTORY RIDGE PHASE 2".**

Attached is a table of the municipal addresses that have been assigned, along with a copy of the above Registered Plan for this subdivision located in the former City of Stoney Creek.

**NOTE: BUILDERS ARE REMINDED OF THEIR OBLIGATION TO INSTALL
 ADDRESS NUMBERS ON ALL NEW DWELLINGS.**

Please update your records accordingly. Should you have any questions regarding the above, please contact Paul Toffoletti at 905-546-2424 Ext. 4348.

Jason Thompson, MCIP, RPP
 Senior Project Manager, Growth Planning Section,
 Growth Management Division, Planning and Economic Development Department.

c.c.

Electrical Safety Authority
 MPAC
 City of Hamilton
 Cogeco Cable
 Horizon Utilities
 Canada Post
 Angus GeoSolutions Inc.
 Blue Line Taxi

Union Gas
 Fire and Police
 Bell Canada Eng.
 Bell Street Guide
 Bell Canada (911)
 Map Mobility
 DMTI Spatial
 DARTS

Ham.-Went. School Boards
 (Public & Separate)
 Canada Mortgage and Housing Corp.
 Hamilton CACC Ambulance Dispatch
 Hamilton-Burlington District Real Estate
 Canadian Cartographic Corp.
 Hamilton Automobile Club
 Telus

62M-1206		Victory Ridge Phase 2 25T-200803	
Lot No.	Address	Lot No.	Address
1	4 WEST GLEN AVENUE	59	67 ALDGATE AVENUE
2	8 WEST GLEN AVENUE	60	71 ALDGATE AVENUE
3	12 WEST GLEN AVENUE	61	75 ALDGATE AVENUE
4	16 WEST GLEN AVENUE	62	79 ALDGATE AVENUE
5	20 WEST GLEN AVENUE	63	83 ALDGATE AVENUE
6	24 WEST GLEN AVENUE	64	87 ALDGATE AVENUE
7	28 WEST GLEN AVENUE	65	91 ALDGATE AVENUE
8	32 WEST GLEN AVENUE	66	241 CRAFTER CRESCENT
9	36 WEST GLEN AVENUE	67	245 CRAFTER CRESCENT
10	40 WEST GLEN AVENUE	68	249 CRAFTER CRESCENT
11	44 WEST GLEN AVENUE	69	253 CRAFTER CRESCENT
12	43 WEST GLEN AVENUE	70	257 CRAFTER CRESCENT
13	39 WEST GLEN AVENUE	71	261 CRAFTER CRESCENT
14	35 WEST GLEN AVENUE	72	265 CRAFTER CRESCENT
15	31 WEST GLEN AVENUE	73	277 CRAFTER CRESCENT
16	27 WEST GLEN AVENUE	74	281 CRAFTER CRESCENT
17	23 WEST GLEN AVENUE	75	285 CRAFTER CRESCENT
18	19 WEST GLEN AVENUE	76	289 CRAFTER CRESCENT
19	15 WEST GLEN AVENUE	77	293 CRAFTER CRESCENT
20	11 WEST GLEN AVENUE	78	297 CRAFTER CRESCENT
21	7 WEST GLEN AVENUE	79	301 CRAFTER CRESCENT
22	3 WEST GLEN AVENUE	80	305 CRAFTER CRESCENT
23	4 ALDGATE AVENUE	81	309 CRAFTER CRESCENT
24	8 ALDGATE AVENUE	82	336 CRAFTER CRESCENT
25	12 ALDGATE AVENUE	83	332 CRAFTER CRESCENT
26	16 ALDGATE AVENUE	84	328 CRAFTER CRESCENT
27	20 ALDGATE AVENUE	85	324 CRAFTER CRESCENT
28	24 ALDGATE AVENUE	86	320 CRAFTER CRESCENT
29	28 ALDGATE AVENUE	87	316 CRAFTER CRESCENT
30	32 ALDGATE AVENUE	88	308 CRAFTER CRESCENT
31	36 ALDGATE AVENUE	89	304 CRAFTER CRESCENT
32	40 ALDGATE AVENUE	90	300 CRAFTER CRESCENT
33	44 ALDGATE AVENUE	91	296 CRAFTER CRESCENT
34	52 ALDGATE AVENUE	92	292 CRAFTER CRESCENT
35	56 ALDGATE AVENUE	93	288 CRAFTER CRESCENT
36	60 ALDGATE AVENUE	94	284 CRAFTER CRESCENT
37	64 ALDGATE AVENUE	95	280 CRAFTER CRESCENT
38	68 ALDGATE AVENUE	96	276 CRAFTER CRESCENT
39	72 ALDGATE AVENUE	97	268 CRAFTER CRESCENT
40	76 ALDGATE AVENUE	98	264 CRAFTER CRESCENT
41	80 ALDGATE AVENUE	99	230 CRAFTER COURT
42	84 ALDGATE AVENUE	100	226 CRAFTER COURT
43	88 ALDGATE AVENUE	101	222 CRAFTER COURT
44	92 ALDGATE AVENUE	102	218 CRAFTER COURT
45	3 ALDGATE AVENUE	103	214 CRAFTER COURT
46	7 ALDGATE AVENUE	104	206 CRAFTER CRESCENT
47	11 ALDGATE AVENUE	105	202 CRAFTER CRESCENT
48	15 ALDGATE AVENUE	106	198 CRAFTER CRESCENT
49	19 ALDGATE AVENUE	107	194 CRAFTER CRESCENT
50	23 ALDGATE AVENUE	108	190 CRAFTER CRESCENT
51	27 ALDGATE AVENUE	109	186 CRAFTER CRESCENT
52	31 ALDGATE AVENUE	110	182 CRAFTER CRESCENT
53	35 ALDGATE AVENUE	111	178 CRAFTER CRESCENT
54	39 ALDGATE AVENUE	112	174 CRAFTER CRESCENT
55	43 ALDGATE AVENUE	Blk 113	272 CRAFTER CRESCENT - Park / Open Space
56	55 ALDGATE AVENUE	Blk 114	CRAFTER CRESCENT - Sanitary Water Easement
57	59 ALDGATE AVENUE		
58	63 ALDGATE AVENUE		

	62M-1206			Victory Ridge Phase 2 25T-200803
	Address			Address
Block 115	4 SHERWAY STREET		Block 116	3 SHERWAY STREET
Block 115	6 SHERWAY STREET		Block 116	5 SHERWAY STREET
Block 115	8 SHERWAY STREET		Block 116	7 SHERWAY STREET
Block 115	10 SHERWAY STREET		Block 116	9 SHERWAY STREET
Block 115	12 SHERWAY STREET		Block 116	11 SHERWAY STREET
Block 115	16 SHERWAY STREET		Block 116	15 SHERWAY STREET
Block 115	18 SHERWAY STREET		Block 116	17 SHERWAY STREET
Block 115	20 SHERWAY STREET		Block 116	19 SHERWAY STREET
Block 115	22 SHERWAY STREET		Block 116	21 SHERWAY STREET
Block 115	24 SHERWAY STREET		Block 116	23 SHERWAY STREET
Block 115	26 SHERWAY STREET		Block 116	25 SHERWAY STREET
Block 115	30 SHERWAY STREET		Block 116	33 SHERWAY STREET
Block 115	32 SHERWAY STREET		Block 116	35 SHERWAY STREET
Block 115	34 SHERWAY STREET		Block 116	37 SHERWAY STREET
Block 115	36 SHERWAY STREET		Block 116	39 SHERWAY STREET
Block 115	38 SHERWAY STREET		Block 116	43 SHERWAY STREET
Block 115	40 SHERWAY STREET		Block 116	45 SHERWAY STREET
Block 115	44 SHERWAY STREET		Block 116	47 SHERWAY STREET
Block 115	46 SHERWAY STREET		Block 116	49 SHERWAY STREET
Block 115	48 SHERWAY STREET		Block 116	51 SHERWAY STREET
Block 115	50 SHERWAY STREET		Block 116	53 SHERWAY STREET
Block 115	52 SHERWAY STREET		Block 116	57 SHERWAY STREET
Block 115	54 SHERWAY STREET		Block 116	59 SHERWAY STREET
Block 115	58 SHERWAY STREET		Block 116	61 SHERWAY STREET
Block 115	60 SHERWAY STREET		Block 116	63 SHERWAY STREET
Block 115	62 SHERWAY STREET		Block 116	65 SHERWAY STREET
Block 115	64 SHERWAY STREET		Block 116	67 SHERWAY STREET
Block 115	66 SHERWAY STREET		Block 116	71 SHERWAY STREET
Block 115	68 SHERWAY STREET		Block 116	73 SHERWAY STREET
Block 115	72 SHERWAY STREET		Block 116	75 SHERWAY STREET
Block 115	74 SHERWAY STREET		Block 116	77 SHERWAY STREET
Block 115	76 SHERWAY STREET		Block 116	79 SHERWAY STREET
Block 115	78 SHERWAY STREET		Block 116	81 SHERWAY STREET
Block 115	80 SHERWAY STREET			

PLAN 62R-1970O

L O T 2 5

PARKWAY

PART 5
PLAN 62R-1970O
P.L.M. 17203-1216 (L1)

218.68 (P) & (M) 218.68

P.L.K. 17097-1390 (A)

CONCESSION

BLOCK 115
PLAN 62R-18248

PART 4
PLAN 62R-1970O
P.L.M. 17203-1216 (L1)

PART 1
PLAN 62R-1970O
P.L.M. 17203-1216 (L1)

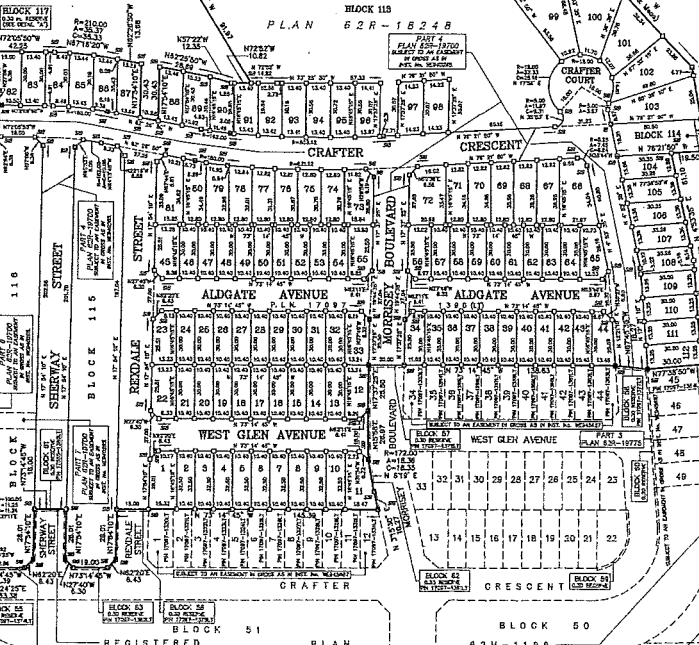
PART 9
PLAN 62R-1970O
P.L.M. 17203-1216 (L1)

BLOCK 118
P.L.M. 17203-1216 (L1)

BLOCK 52
P.L.M. 17203-1216 (L1)

BLOCK 53
P.L.M. 17203-1216 (L1)

BLOCK 54
P.L.M. 17203-1216 (L1)



DEPOSITED PLAN No. 105 M.I.S.C. (P-1790-1)
P.L.M. 17203-0343 (A)

ROAD ALLOWANCE BETWEEN TOWNSHIP LOTS 24 AND 25

CENTENNIAL PARKWAY P.L.M. 17275-6085 (A)

P.L.M. 17097-1141 (L7)

ESP 00816550291

REGISTERED BLOCK 51 PLAN 62M-1189

LOT 25

PART 1

IB DENOTES IRON BAR
 CM DENOTES CONCRETE MONUMENT
 WIT. DENOTES WITNESS
 P1 DENOTES REGISTERED PLAN
 P2 DENOTES PLAN 62R-1B248
 (JDB) DENOTES J.D. BARNES LIMITE
 (DHO) DENOTES DEPARTMENT OF H
 (717) DENOTES J.J. KISWAY O.L.S.
 (655) DENOTES J.T. PETERS O.L.S.
 (1213) DENOTES J.D. PETERS O.L.S.
 (912) DENOTES A.J. CLARKE O.L.S.

ALL PLANTED MONUMENTS ARE IRON BAR SPECIFIED OTHERWISE.

DISTANCES AND COORDINATES SHOWN ON METRES AND CAN BE CONVERTED TO FEET

BEARINGS ARE ASTRONOMIC AND CAN BE GRID BY ROTATING COUNTER CLOCKWISE 6

DISTANCES ARE GROUND AND CAN BE MULTIPLYING BY THE COMBINED SCALE FA

SPECIFIED CONTROL POINTS (SCP)
 NAD83 (ORIGINAL), COORDINATES TO PER SEC. 14 (2) OF O.REG. :

POINT ID	NORTHING
SCP 00819860621	4703660.213
SCP 00819860622	4783801.998

COORDINATES CANNOT, IN THESE RE-ESTABLISH CORNERS OR BOUNDARI

OWNER'S CERTIFICATE:

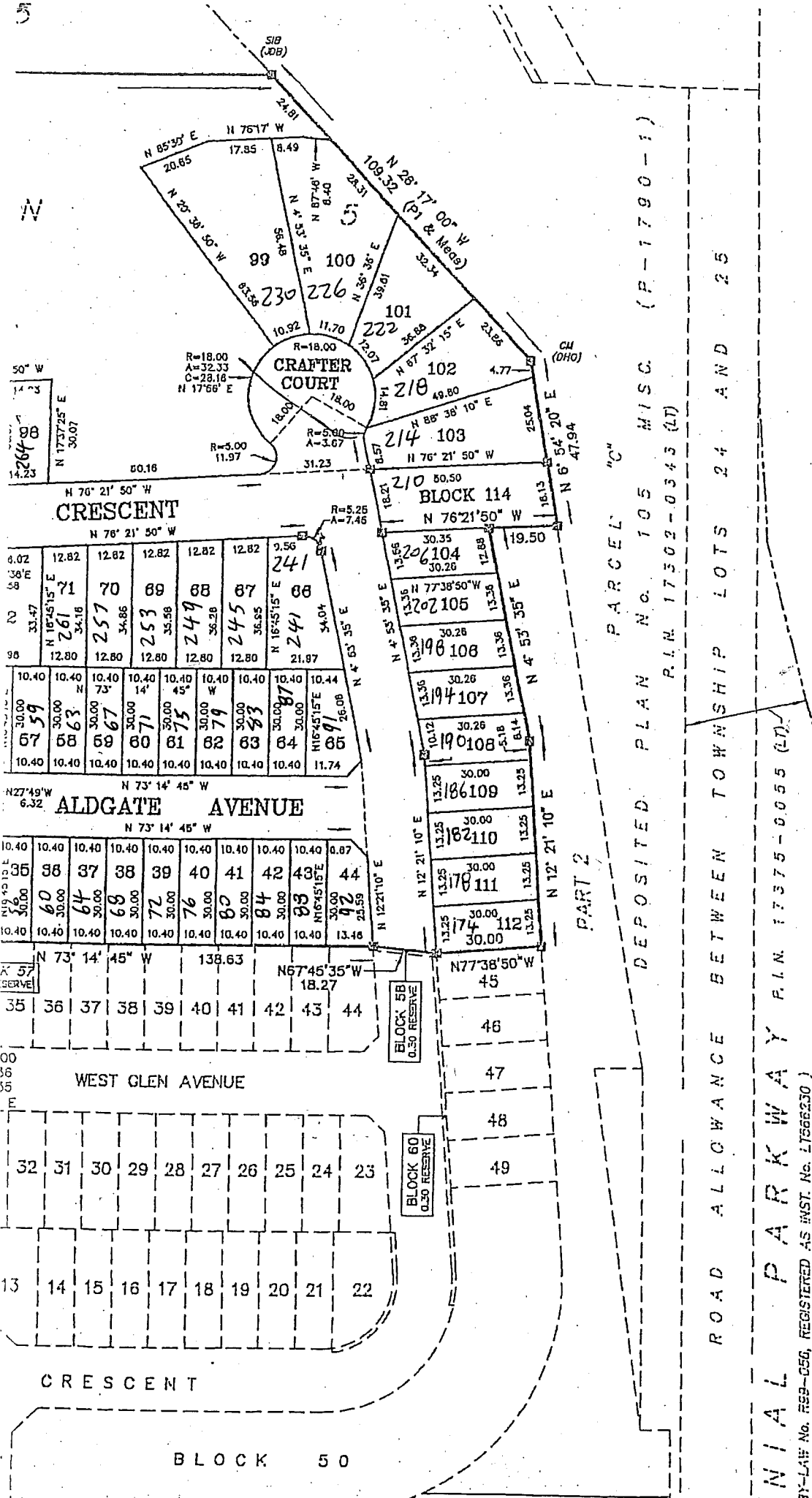
THIS IS TO CERTIFY THAT:

1. LOTS 1 TO 112, BOTH INCLUSIVE, BLOCK THE STREETS NAMELY MORRISSEY BOULE CRAFTER COURT, WEST GLEN AVENUE, 1 STREET, ALDGATE AVENUE AND BRADSH ACCORDING TO OUR INSTRUCTIONS, TO OUR INSTRUCTIONS.
2. THE STREETS ARE HEREBY DEDICATED AS PUBLIC HIGHWAYS.

EMPIRE COMMUNITIES (STONEY

DATE

11
TO E



MUNITAL PARKWAY P.L.N. 17375-0055 (L)
 BY-LAW No. 539-050, REGISTERED AS INST. No. L7566230)
 PLAN No. 657 MISC. (P-1790-31)

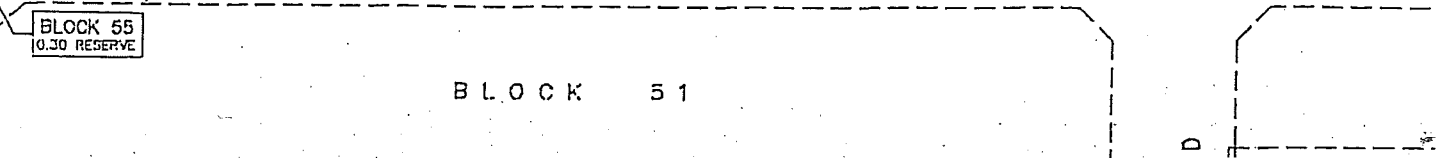
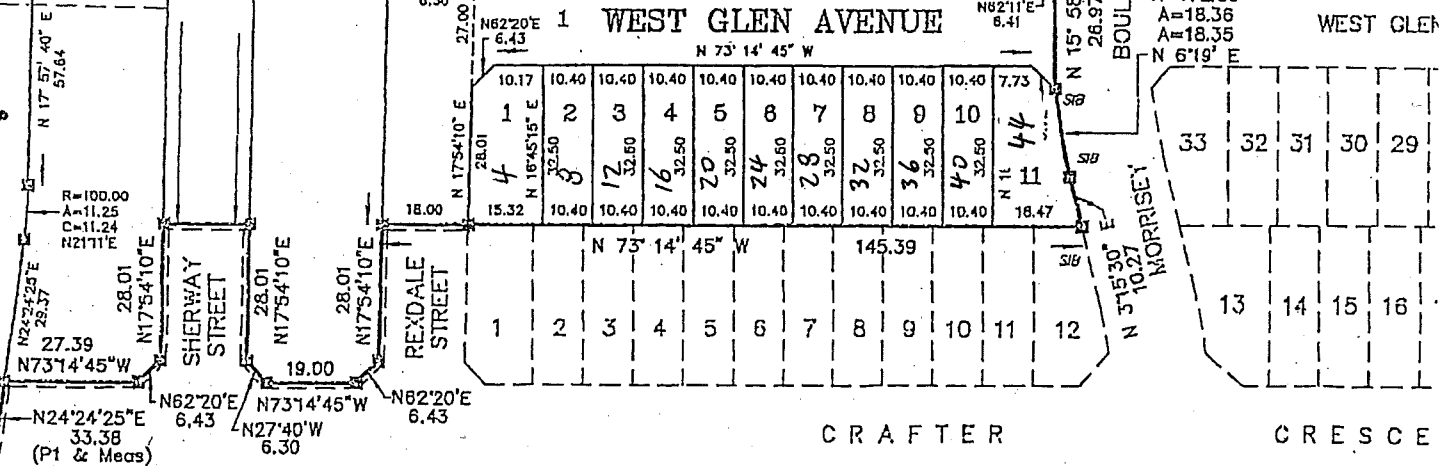
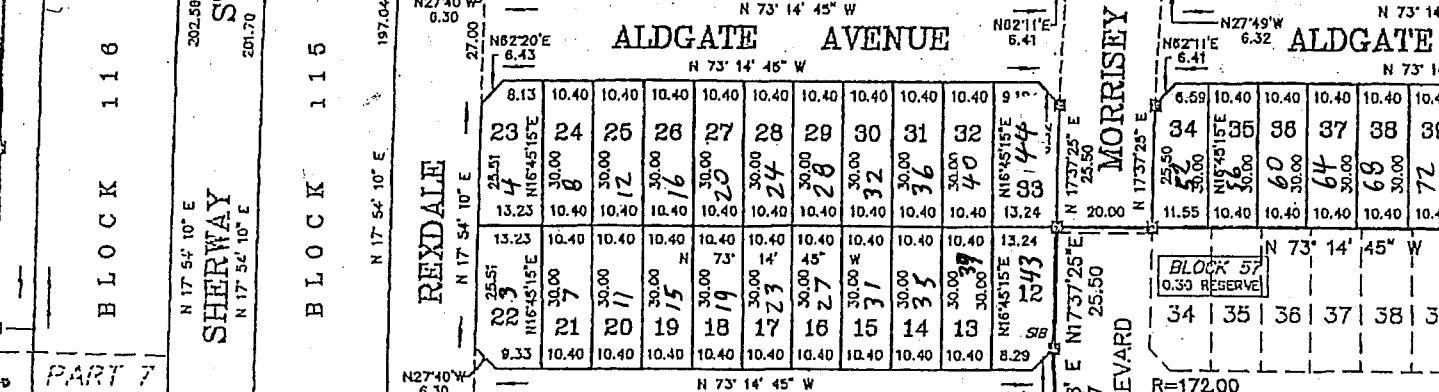
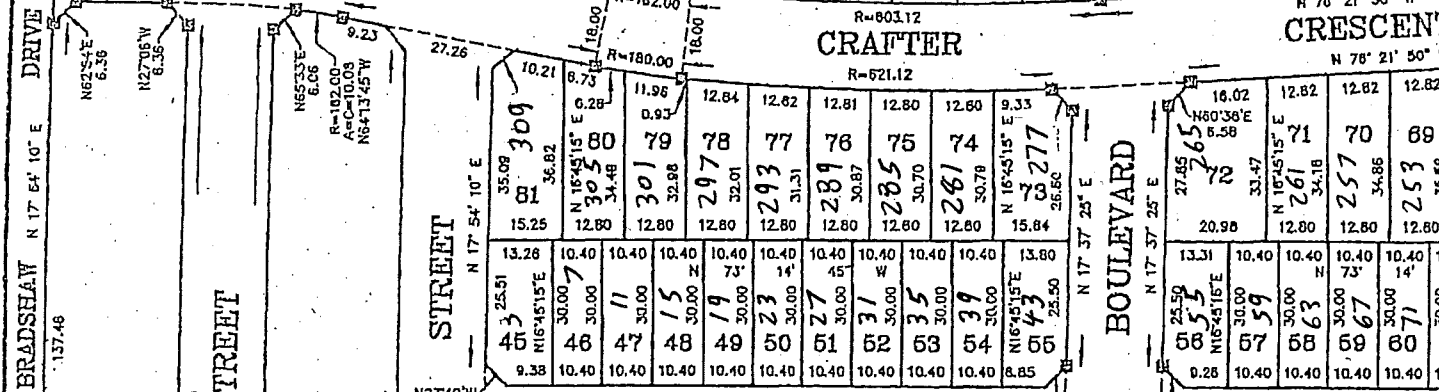
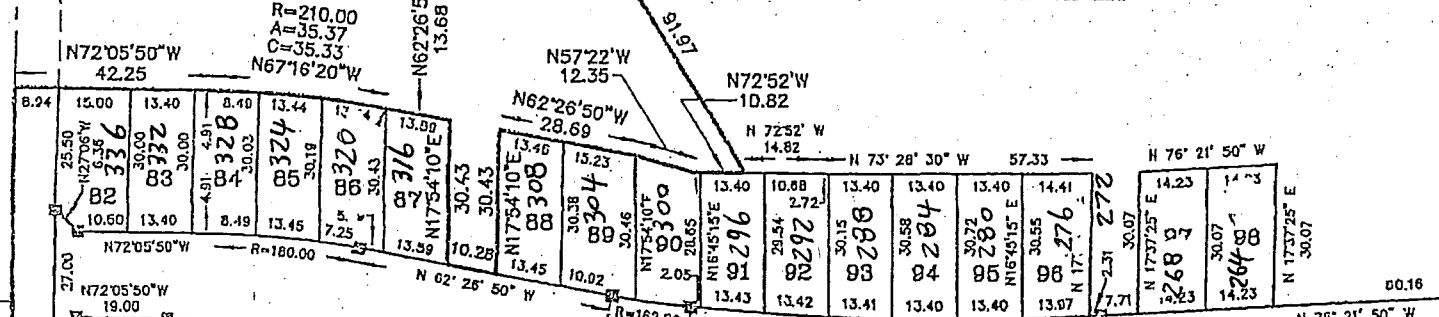
L O 2 5

PART 5

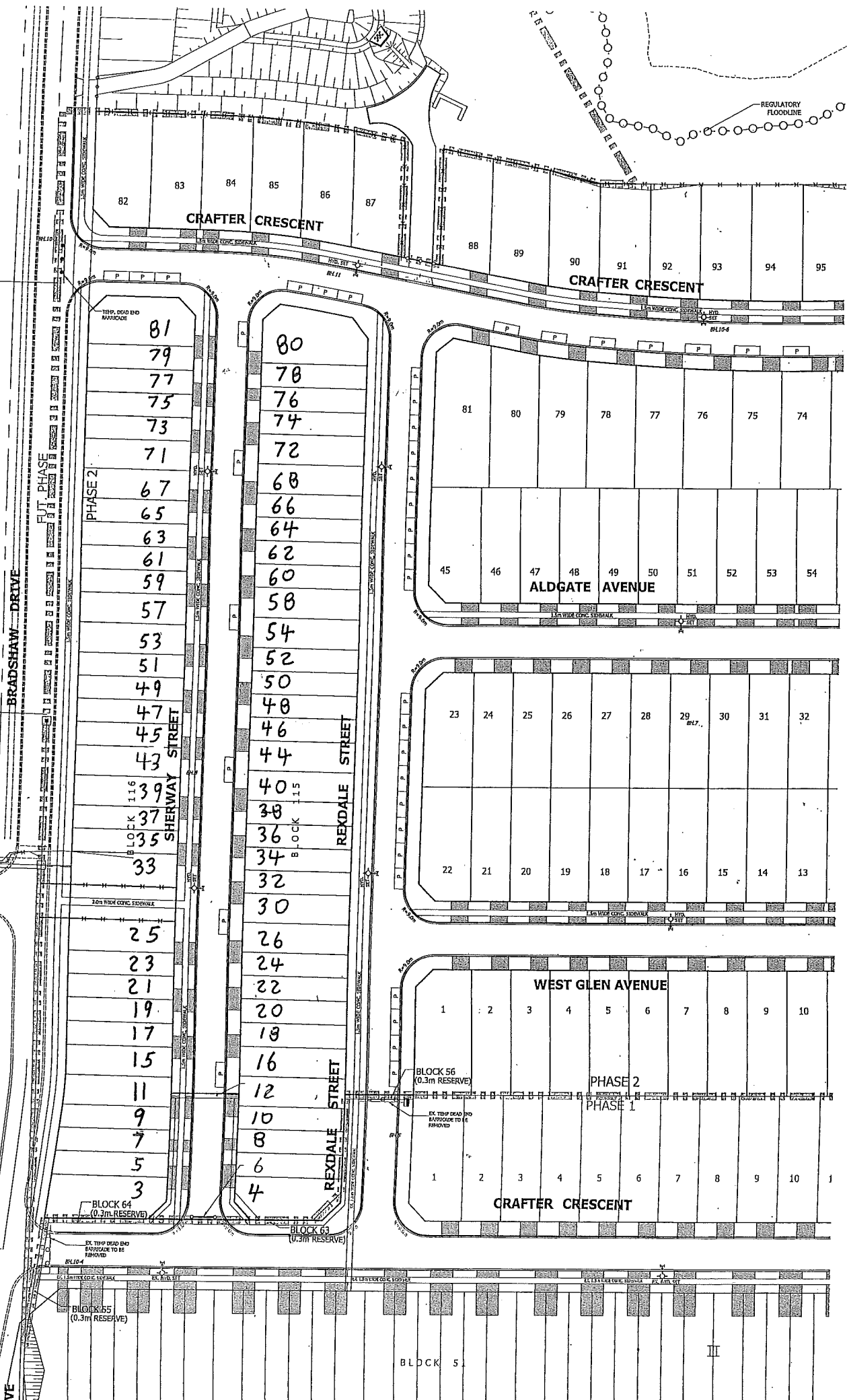
C O N C E S S I O N

N 73° 28' 30" W (P1 & Meas)
219.66 (P1 & Meas)

BLOCK 118



BLOCK 51



BLOCK 5

III