

Mailing Address:  
 Hamilton City Hall  
 71 Main Street West, 6<sup>th</sup> Floor  
 Hamilton, ON L8P 4Y5  
 www.hamilton.ca

Planning and Economic Development Department  
 Growth Management Division  
 Physical Address: 71 Main Street West, 6<sup>th</sup> Floor  
 Phone: 905-546-2424 Ext.4237 Fax: 905-546-4202  
 Paul.Toffoletti@hamilton.ca

Hamilton

January 13, 2015

FILE: 221-C  
 25T-200719

Urbex Engineering  
 c/oAngelo Cameracci  
 161 Rebecca Street  
 Hamilton, ON, L8R 1B9

A. T. McLaren Ltd.  
 69 John Street South, Suite 230  
 Hamilton, ON, L8N 2B9

**NOTICE OF MUNICIPAL ADDRESSES**

**FOR REGISTERED PLAN 62M-1213 "ADAM ESTATES PHASE 4".**

Attached is a table of the municipal addresses that have been assigned, along with a copy of the above Registered Plan for this subdivision located in the former City of Hamilton.

**NOTE: BUILDERS ARE REMINDED OF THEIR OBLIGATION TO INSTALL ADDRESS NUMBERS ON ALL NEW DWELLINGS.**

Please update your records accordingly. Should you have any questions regarding the above, please contact Paul Toffoletti at 905-546-2424 Ext. 4348.

Jason Thompson, MCIP, RPP  
 Senior Project Manager, Growth Planning Section,  
 Growth Management Division, Planning and Economic Development Department.

c.c.

Electrical Safety Authority  
 MPAC  
 City of Hamilton  
 Source Cable  
 Horizon Utilities  
 Canada Post  
 Angus GeoSolutions Inc.  
 Blue Line Taxi

Union Gas  
 Fire and Police  
 Bell Canada Eng.  
 Bell Street Guide  
 Bell Canada (911)  
 Map Mobility  
 DMTI Spatial  
 DARTS

Ham.-Went. School Boards  
 (Public & Separate)  
 Canada Mortgage and Housing Corp.  
 Hamilton CACC Ambulance Dispatch  
 Hamilton-Burlington District Real Estate  
 Canadian Cartographic Corp.  
 Hamilton Automobile Club  
 Telus

CALCULATED PLAN  
 OF PART OF  
 LOT 14  
 CONCESSION 7  
 GEOGRAPHIC  
 TOWNSHIP OF BARTON  
 IN THE  
 CITY OF HAMILTON

ADAM ESTATES PHASE 4

62M-1213

SCALE 1: 500 METRIC

S.D. McLAREN, O.L.S. - 2012



LINCOLN ALEXANDER PARKWAY

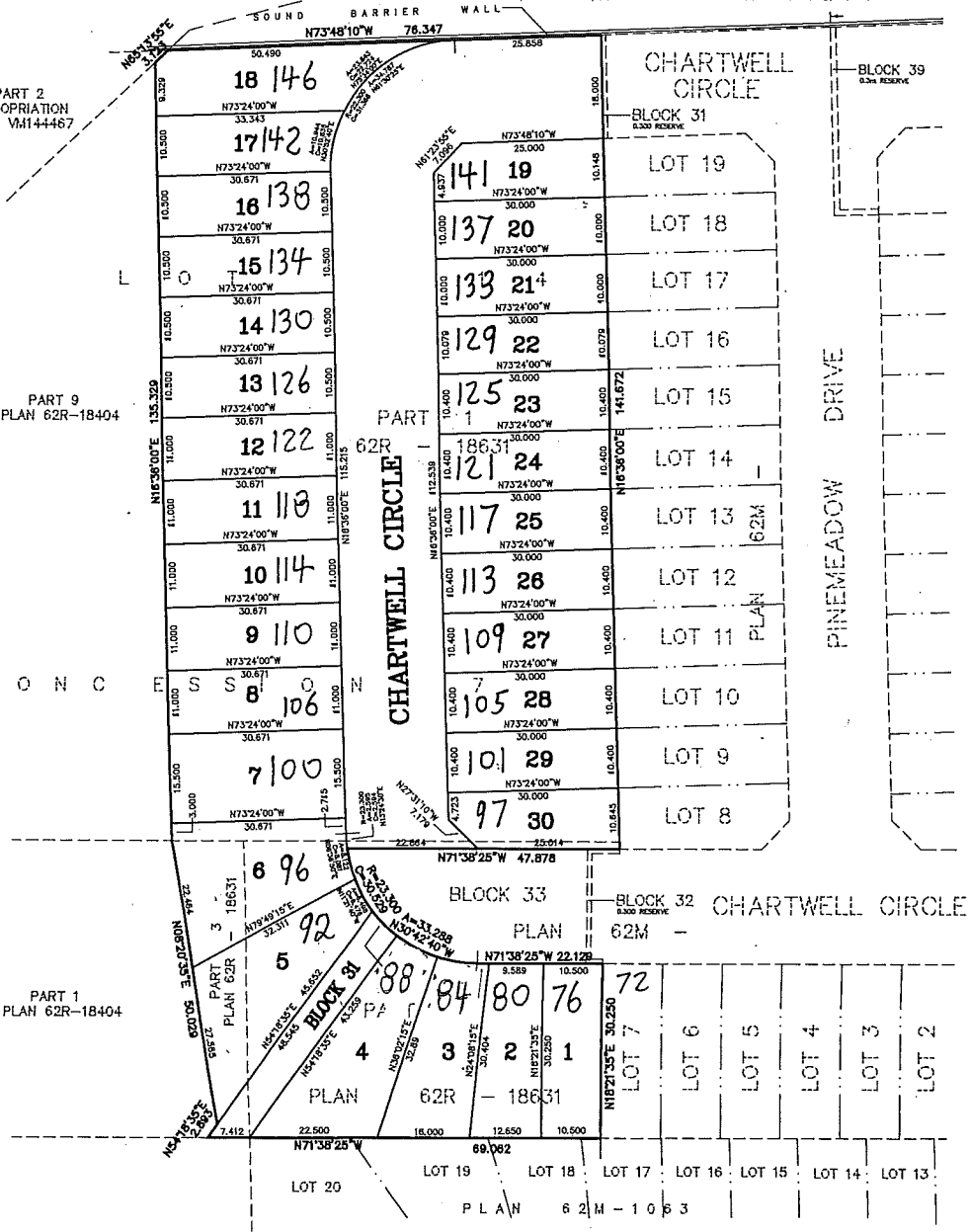
PART 3, PLAN 62R-14294

PART 2  
 EXPROPRIATION  
 PLAN VM144467

PART 9  
 PLAN 62R-18404

C O N C

PART 1  
 PLAN 62R-18404



**METRIC NOTE**  
 DISTANCES SHOWN ON THIS  
 PLAN ARE IN METRES AND  
 CAN BE CONVERTED TO FEET  
 BY DIVIDING BY 0.3048

**A.T. McLaren Limited**  
 LEGAL AND ENGINEERING SURVEYS  
 69 JOHN STREET SOUTH, SUITE 230  
 HAMILTON, ONTARIO, L8N 2B9  
 PHONE (905) 527-8559 FAX (905) 527-0032

JULY 23, 2012  
 DATE

S.D. McLAREN, O.L.S.

Drawn: JRM Checked: LD Scale: 1:500 Proj. No.: 32320-04

62M-1213	Adam Estates phase 4
Lot	Address
1	76 Chartwell Circle
2	80 Chartwell Circle
3	84 Chartwell Circle
4	88 Chartwell Circle
5	92 Chartwell Circle
6	96 Chartwell Circle
7	100 Chartwell Circle
8	106 Chartwell Circle
9	110 Chartwell Circle
10	114 Chartwell Circle
11	118 Chartwell Circle
12	122 Chartwell Circle
13	126 Chartwell Circle
14	130 Chartwell Circle
15	134 Chartwell Circle
16	138 Chartwell Circle
17	142 Chartwell Circle
18	146 Chartwell Circle
19	141 Chartwell Circle
20	137 Chartwell Circle
21	133 Chartwell Circle
22	129 Chartwell Circle
23	125 Chartwell Circle
24	121 Chartwell Circle
25	117 Chartwell Circle
26	113 Chartwell Circle
27	109 Chartwell Circle
28	105 Chartwell Circle
29	101 Chartwell Circle
30	97 Chartwell Circle