



Mailing Address:
 City Centre, 77 James Street North, Suite 400
 Hamilton, ON L8R 2K3.
 Canada L8P 4Y5
 www.hamilton.ca

Planning and Economic Development Department
 Planning Division

Physical Address: City Centre, 77 James Street North, Suite 400

Phone: 905-546-2424 Ext.4348 Fax: 905-546-4202

ptoffole@hamilton.ca

Hamilton

October 15, 2009

FILE: 221-B, 221-C, 221-N, 221-T, 221-W
 25T-200511

Country Green Homes
 c/o Adam Nesbitt
 410 Industrial Drive
 Milton, ON L9T 5A6

B.A. Jacobs Surveying Ltd.
 131 John Street South, Suite 101
 Hamilton, ON, L8N 2C3

Metropolitan Consulting Inc.
 c/o Chris C. Povell, P.Eng.
 2290 Queensway Drive
 Burlington, ON, L7R 3T2

REVISED

NOTICE OF MUNICIPAL NUMBERS FOR REGISTERED PLAN 62M- 1125 "PARKSIDE HILLS PHASE 1"

**IN OUR PREVIOUS LETTER DATED AUGUST 12 2009, THE STREET NAME
TRUEDELL CIRCLE WAS INCORRECTLY SPELLED AS TRUDELL CIRCLE IN OUR
 LIST BUT IS CORRECT ON THE 62M- PLAN.**

Attached is a copy of the above Registered Plan for which municipal numbers have been assigned for this subdivision located in the former Town of Flamborough.

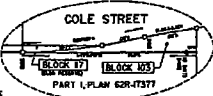
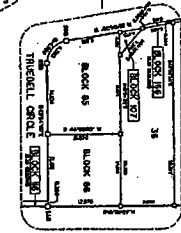
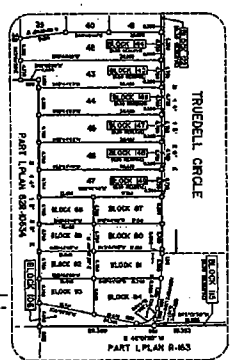
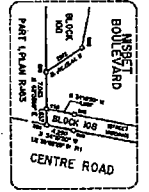
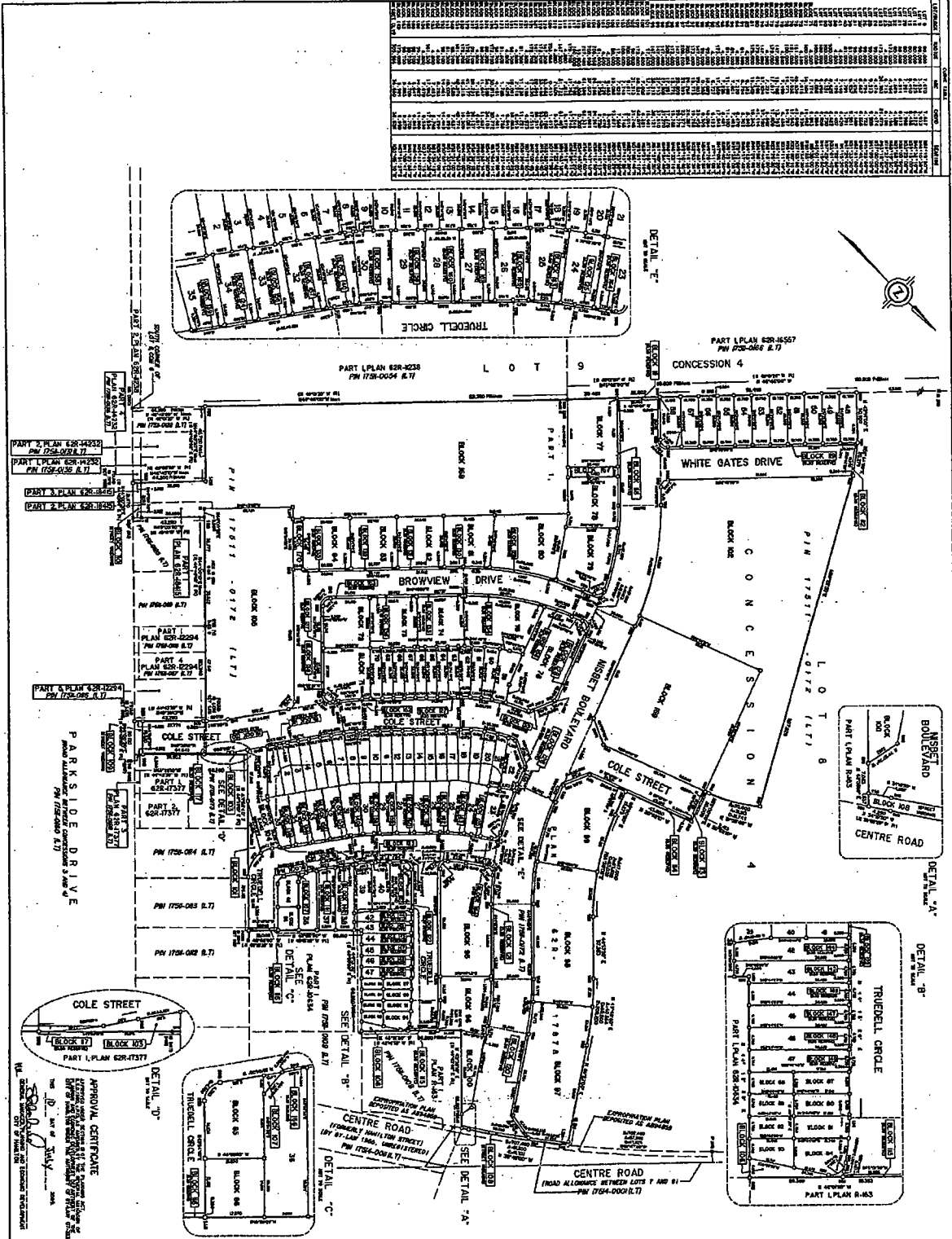
Please update your records accordingly. Should you have any questions regarding the above, please contact Paul Toffoletti at 905-546-2424 Ext.4348.

Michelle Sergi, MCIP, RPP
 Senior Project Manager, Legislative Approvals,
 Planning Division, Planning and Economic Development Department.

C.C.		
Electrical Safety Authority	Union Gas	Ham.-Went. School Boards (Public & Separate)
Assessment Commissioner	Fire and Police	Canada Mortgage and Housing Corp.
City of Hamilton	Bell Canada Eng.	Hamilton CACC Ambulance Dispatch
Cogeco Cable	Bell Street Guide	Hamilton-Burlington District Real Estate
Horizon Utilities	Bell Canada (911)	Canadian Cartographic Corp.
Canada Post	Map Mobility	Hamilton Automobile Club

62M-1125		PARKSIDE HILLS PHASE 1	
Lot No.	Address	Lot No.	Address
1	20 COLE STREET	59	79 COLE STREET
2	22 COLE STREET	60	77 COLE STREET
3	26 COLE STREET	61	73 COLE STREET
4	28 COLE STREET	62	71 COLE STREET
5	32 COLE STREET	63	67 COLE STREET
6	34 COLE STREET	64	65 COLE STREET
7	38 COLE STREET	65	61 COLE STREET
8	40 COLE STREET	66	59 COLE STREET
9	44 COLE STREET	67	55 COLE STREET
10	46 COLE STREET	68	53 COLE STREET
11	50 COLE STREET	69	49 COLE STREET
12	52 COLE STREET	70	47 COLE STREET
13	56 COLE STREET		
14	58 COLE STREET	BLOCK 71	93 BROWVIEW DRIVE
15	62 COLE STREET	BLOCK 71	91 BROWVIEW DRIVE
16	64 COLE STREET	BLOCK 71	89 BROWVIEW DRIVE
17	68 COLE STREET	BLOCK 71	87 BROWVIEW DRIVE
18	70 COLE STREET		
19	74 COLE STREET	BLOCK 72	81 BROWVIEW DRIVE
20	76 COLE STREET	BLOCK 72	79 BROWVIEW DRIVE
21	80 COLE STREET	BLOCK 72	77 BROWVIEW DRIVE
22	82 COLE STREET	BLOCK 72	75 BROWVIEW DRIVE
23	4 TRUEDELL CIRCLE		
24	8 TRUEDELL CIRCLE	BLOCK 73	49 BROWVIEW DRIVE
25	12 TRUEDELL CIRCLE	BLOCK 73	47 BROWVIEW DRIVE
26	16 TRUEDELL CIRCLE	BLOCK 73	45 BROWVIEW DRIVE
27	20 TRUEDELL CIRCLE	BLOCK 73	43 BROWVIEW DRIVE
28	24 TRUEDELL CIRCLE		
29	28 TRUEDELL CIRCLE	BLOCK 74	37 BROWVIEW DRIVE
30	32 TRUEDELL CIRCLE	BLOCK 74	35 BROWVIEW DRIVE
31	36 TRUEDELL CIRCLE	BLOCK 74	33 BROWVIEW DRIVE
32	40 TRUEDELL CIRCLE	BLOCK 74	31 BROWVIEW DRIVE
33	44 TRUEDELL CIRCLE		
34	48 TRUEDELL CIRCLE	BLOCK 75	25 BROWVIEW DRIVE
35	52 TRUEDELL CIRCLE	BLOCK 75	23 BROWVIEW DRIVE
36	47 TRUEDELL CIRCLE	BLOCK 75	21 BROWVIEW DRIVE
37	43 TRUEDELL CIRCLE	BLOCK 75	19 BROWVIEW DRIVE
38	39 TRUEDELL CIRCLE	BLOCK 75	17 BROWVIEW DRIVE
39	33 TRUEDELL CIRCLE	BLOCK 75	15 BROWVIEW DRIVE
40	29 TRUEDELL CIRCLE		
41	25 TRUEDELL CIRCLE	BLOCK 76	81 NISBET BOULEVARD
42	155 TRUEDELL CIRCLE	BLOCK 76	83 NISBET BOULEVARD
43	153 TRUEDELL CIRCLE	BLOCK 76	85 NISBET BOULEVARD
44	149 TRUEDELL CIRCLE	BLOCK 76	87 NISBET BOULEVARD
45	147 TRUEDELL CIRCLE	BLOCK 76	89 NISBET BOULEVARD
46	143 TRUEDELL CIRCLE	BLOCK 76	91 NISBET BOULEVARD
47	141 TRUEDELL CIRCLE	BLOCK 76	93 NISBET BOULEVARD
48	44 WHITE GATES DRIVE	BLOCK 76	95 NISBET BOULEVARD
49	40 WHITE GATES DRIVE		
50	36 WHITE GATES DRIVE	BLOCK 77	143 NISBET BOULEVARD
51	32 WHITE GATES DRIVE	BLOCK 77	141 NISBET BOULEVARD
52	28 WHITE GATES DRIVE	BLOCK 77	139 NISBET BOULEVARD
53	24 WHITE GATES DRIVE	BLOCK 77	137 NISBET BOULEVARD
54	20 WHITE GATES DRIVE	BLOCK 77	135 NISBET BOULEVARD
55	16 WHITE GATES DRIVE	BLOCK 77	133 NISBET BOULEVARD
56	12 WHITE GATES DRIVE	BLOCK 77	131 NISBET BOULEVARD
57	8 WHITE GATES DRIVE		
58	4 WHITE GATES DRIVE		

62M-1125		PARKSIDE HILLS PHASE 1	
Lot No.	Address	Lot No.	Address
BLOCK 78	125 NISBET BOULEVARD	BLOCK 95	45 NISBET BOULEVARD
BLOCK 78	123 NISBET BOULEVARD	BLOCK 95	43 NISBET BOULEVARD
BLOCK 78	121 NISBET BOULEVARD	BLOCK 95	41 NISBET BOULEVARD
BLOCK 78	119 NISBET BOULEVARD	BLOCK 95	39 NISBET BOULEVARD
BLOCK 78	117 NISBET BOULEVARD	BLOCK 95	37 NISBET BOULEVARD
		BLOCK 95	35 NISBET BOULEVARD
BLOCK 79	111 NISBET BOULEVARD	BLOCK 95	33 NISBET BOULEVARD
BLOCK 79	109 NISBET BOULEVARD	BLOCK 95	31 NISBET BOULEVARD
BLOCK 79	107 NISBET BOULEVARD		
BLOCK 79	105 NISBET BOULEVARD	BLOCK 96	25 NISBET BOULEVARD
BLOCK 79	103 NISBET BOULEVARD	BLOCK 96	23 NISBET BOULEVARD
		BLOCK 96	21 NISBET BOULEVARD
BLOCK 80	8 BROWVIEW DRIVE	BLOCK 96	19 NISBET BOULEVARD
BLOCK 80	10 BROWVIEW DRIVE		
BLOCK 80	12 BROWVIEW DRIVE	BLOCK 97	4 NISBET BOULEVARD
BLOCK 80	14 BROWVIEW DRIVE	BLOCK 97	6 NISBET BOULEVARD
BLOCK 80	16 BROWVIEW DRIVE	BLOCK 97	8 NISBET BOULEVARD
BLOCK 80	18 BROWVIEW DRIVE	BLOCK 97	10 NISBET BOULEVARD
BLOCK 80	20 BROWVIEW DRIVE	BLOCK 97	12 NISBET BOULEVARD
		BLOCK 97	14 NISBET BOULEVARD
BLOCK 81	26 BROWVIEW DRIVE	BLOCK 97	16 NISBET BOULEVARD
BLOCK 81	28 BROWVIEW DRIVE	BLOCK 97	18 NISBET BOULEVARD
BLOCK 81	30 BROWVIEW DRIVE		
BLOCK 81	32 BROWVIEW DRIVE	BLOCK 98	26 NISBET BOULEVARD
		BLOCK 98	28 NISBET BOULEVARD
BLOCK 82	38 BROWVIEW DRIVE	BLOCK 98	30 NISBET BOULEVARD
BLOCK 82	40 BROWVIEW DRIVE	BLOCK 98	32 NISBET BOULEVARD
BLOCK 82	42 BROWVIEW DRIVE	BLOCK 98	34 NISBET BOULEVARD
BLOCK 82	44 BROWVIEW DRIVE	BLOCK 98	36 NISBET BOULEVARD
		BLOCK 98	44 NISBET BOULEVARD
BLOCK 83	50 BROWVIEW DRIVE	BLOCK 98	46 NISBET BOULEVARD
BLOCK 83	52 BROWVIEW DRIVE	BLOCK 98	48 NISBET BOULEVARD
BLOCK 83	54 BROWVIEW DRIVE		
BLOCK 83	56 BROWVIEW DRIVE	BLOCK 99	56 NISBET BOULEVARD
		BLOCK 99	58 NISBET BOULEVARD
BLOCK 84	62 BROWVIEW DRIVE	BLOCK 99	60 NISBET BOULEVARD
BLOCK 84	64 BROWVIEW DRIVE	BLOCK 99	62 NISBET BOULEVARD
BLOCK 84	66 BROWVIEW DRIVE	BLOCK 99	64 NISBET BOULEVARD
BLOCK 84	68 BROWVIEW DRIVE	BLOCK 99	66 NISBET BOULEVARD
		BLOCK 99	68 NISBET BOULEVARD
BLOCK 85 AND 86	51 TRUEDELL CIRCLE	BLOCK 99	70 NISBET BOULEVARD
BLOCK 87 AND 88	137 TRUEDELL CIRCLE	BLOCK 100	3 NISBET BOULEVARD
BLOCK 89 AND 90	135 TRUEDELL CIRCLE	BLOCK 101	60 TRUEDELL CIRCLE
BLOCK 91 AND 92	131 TRUEDELL CIRCLE	BLOCK 102 PARK	110 NISBET BOULEVARD
BLOCK 93 AND 94	129 TRUEDELL CIRCLE	BLOCK 103	12 COLE STREET
		BLOCK 105 POND	19 COLE STREET
		BLOCK 169 WATER TOWER	115 COLE STREET



APPROVAL CERTIFICATE
 I, the undersigned, being a duly qualified and authorized officer of the City of Hamilton, do hereby certify that the above plan is in accordance with the provisions of the Planning Act and the Planning Act Regulations, and that the same has been approved by the Planning Board of the City of Hamilton.

[Signature]
 City Engineer

OWNER'S CERTIFICATE
 I, the undersigned, being the owner of the land shown on the above plan, do hereby certify that the same is in accordance with the provisions of the Planning Act and the Planning Act Regulations, and that the same has been approved by the Planning Board of the City of Hamilton.

[Signature]
 Owner

NOTES
 1. THE CITY ENGINEER HAS REVIEWED THE ABOVE PLAN AND IS SATISFIED THAT THE SAME IS IN ACCORDANCE WITH THE PROVISIONS OF THE PLANNING ACT AND THE PLANNING ACT REGULATIONS, AND THAT THE SAME HAS BEEN APPROVED BY THE PLANNING BOARD OF THE CITY OF HAMILTON.

2. THE CITY ENGINEER HAS REVIEWED THE ABOVE PLAN AND IS SATISFIED THAT THE SAME IS IN ACCORDANCE WITH THE PROVISIONS OF THE PLANNING ACT AND THE PLANNING ACT REGULATIONS, AND THAT THE SAME HAS BEEN APPROVED BY THE PLANNING BOARD OF THE CITY OF HAMILTON.

PLANNING ACT REGULATIONS
 1. THE CITY ENGINEER HAS REVIEWED THE ABOVE PLAN AND IS SATISFIED THAT THE SAME IS IN ACCORDANCE WITH THE PROVISIONS OF THE PLANNING ACT AND THE PLANNING ACT REGULATIONS, AND THAT THE SAME HAS BEEN APPROVED BY THE PLANNING BOARD OF THE CITY OF HAMILTON.

2. THE CITY ENGINEER HAS REVIEWED THE ABOVE PLAN AND IS SATISFIED THAT THE SAME IS IN ACCORDANCE WITH THE PROVISIONS OF THE PLANNING ACT AND THE PLANNING ACT REGULATIONS, AND THAT THE SAME HAS BEEN APPROVED BY THE PLANNING BOARD OF THE CITY OF HAMILTON.

PLANNING ACT REGULATIONS
 1. THE CITY ENGINEER HAS REVIEWED THE ABOVE PLAN AND IS SATISFIED THAT THE SAME IS IN ACCORDANCE WITH THE PROVISIONS OF THE PLANNING ACT AND THE PLANNING ACT REGULATIONS, AND THAT THE SAME HAS BEEN APPROVED BY THE PLANNING BOARD OF THE CITY OF HAMILTON.

2. THE CITY ENGINEER HAS REVIEWED THE ABOVE PLAN AND IS SATISFIED THAT THE SAME IS IN ACCORDANCE WITH THE PROVISIONS OF THE PLANNING ACT AND THE PLANNING ACT REGULATIONS, AND THAT THE SAME HAS BEEN APPROVED BY THE PLANNING BOARD OF THE CITY OF HAMILTON.

PLANNING ACT REGULATIONS
 1. THE CITY ENGINEER HAS REVIEWED THE ABOVE PLAN AND IS SATISFIED THAT THE SAME IS IN ACCORDANCE WITH THE PROVISIONS OF THE PLANNING ACT AND THE PLANNING ACT REGULATIONS, AND THAT THE SAME HAS BEEN APPROVED BY THE PLANNING BOARD OF THE CITY OF HAMILTON.

2. THE CITY ENGINEER HAS REVIEWED THE ABOVE PLAN AND IS SATISFIED THAT THE SAME IS IN ACCORDANCE WITH THE PROVISIONS OF THE PLANNING ACT AND THE PLANNING ACT REGULATIONS, AND THAT THE SAME HAS BEEN APPROVED BY THE PLANNING BOARD OF THE CITY OF HAMILTON.

PLANNING ACT REGULATIONS
 1. THE CITY ENGINEER HAS REVIEWED THE ABOVE PLAN AND IS SATISFIED THAT THE SAME IS IN ACCORDANCE WITH THE PROVISIONS OF THE PLANNING ACT AND THE PLANNING ACT REGULATIONS, AND THAT THE SAME HAS BEEN APPROVED BY THE PLANNING BOARD OF THE CITY OF HAMILTON.

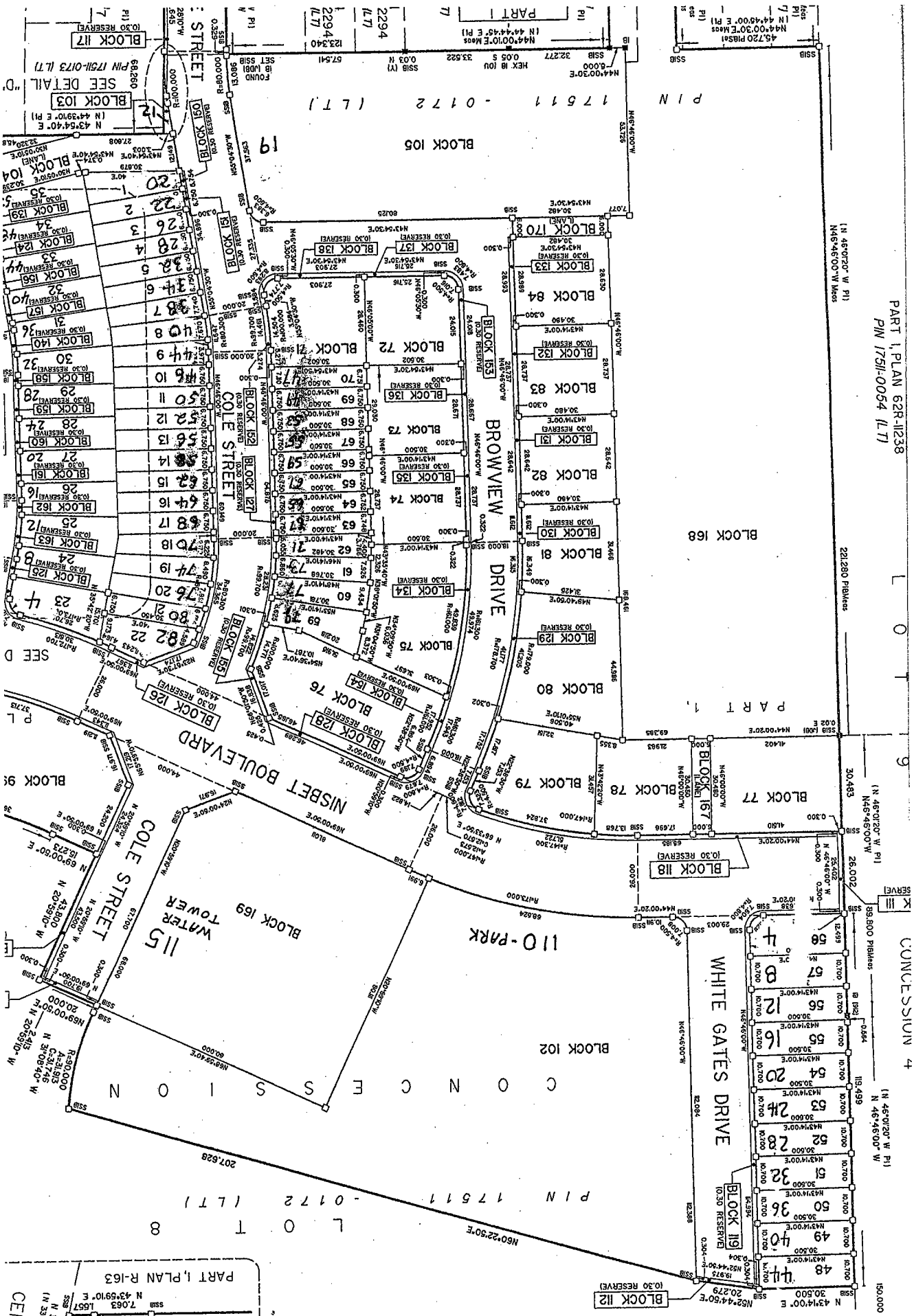
2. THE CITY ENGINEER HAS REVIEWED THE ABOVE PLAN AND IS SATISFIED THAT THE SAME IS IN ACCORDANCE WITH THE PROVISIONS OF THE PLANNING ACT AND THE PLANNING ACT REGULATIONS, AND THAT THE SAME HAS BEEN APPROVED BY THE PLANNING BOARD OF THE CITY OF HAMILTON.

PLANNING ACT REGULATIONS
 1. THE CITY ENGINEER HAS REVIEWED THE ABOVE PLAN AND IS SATISFIED THAT THE SAME IS IN ACCORDANCE WITH THE PROVISIONS OF THE PLANNING ACT AND THE PLANNING ACT REGULATIONS, AND THAT THE SAME HAS BEEN APPROVED BY THE PLANNING BOARD OF THE CITY OF HAMILTON.

2. THE CITY ENGINEER HAS REVIEWED THE ABOVE PLAN AND IS SATISFIED THAT THE SAME IS IN ACCORDANCE WITH THE PROVISIONS OF THE PLANNING ACT AND THE PLANNING ACT REGULATIONS, AND THAT THE SAME HAS BEEN APPROVED BY THE PLANNING BOARD OF THE CITY OF HAMILTON.

PART I, PLAN 62R-11238
P/N 17511-0054 (L71)

CONCESSION 4



PART I, PLAN R-163
N 43°59'10" E 1.057'
N 1° 35'
CEI

P I N 17511 - 0172 (L71) 8

P I N 17511 - 0172 (L71)

PART I
N 44°44'45" E P1
N 44°00'30" E
N 44°49'00" E P1
N 44°00'30" E
N 44°49'00" E P1

P I N 17511 - 0172 (L71) 9

P I N 17511 - 0172 (L71) 10

P I N 17511 - 0172 (L71) 11

P I N 17511 - 0172 (L71) 12

P I N 17511 - 0172 (L71) 13

P I N 17511 - 0172 (L71) 14

P I N 17511 - 0172 (L71) 15

P I N 17511 - 0172 (L71) 16

P I N 17511 - 0172 (L71) 17

P I N 17511 - 0172 (L71) 18

P I N 17511 - 0172 (L71) 19

P I N 17511 - 0172 (L71) 20

P I N 17511 - 0172 (L71) 21

P I N 17511 - 0172 (L71) 22

P I N 17511 - 0172 (L71) 23

P I N 17511 - 0172 (L71) 24

P I N 17511 - 0172 (L71) 25

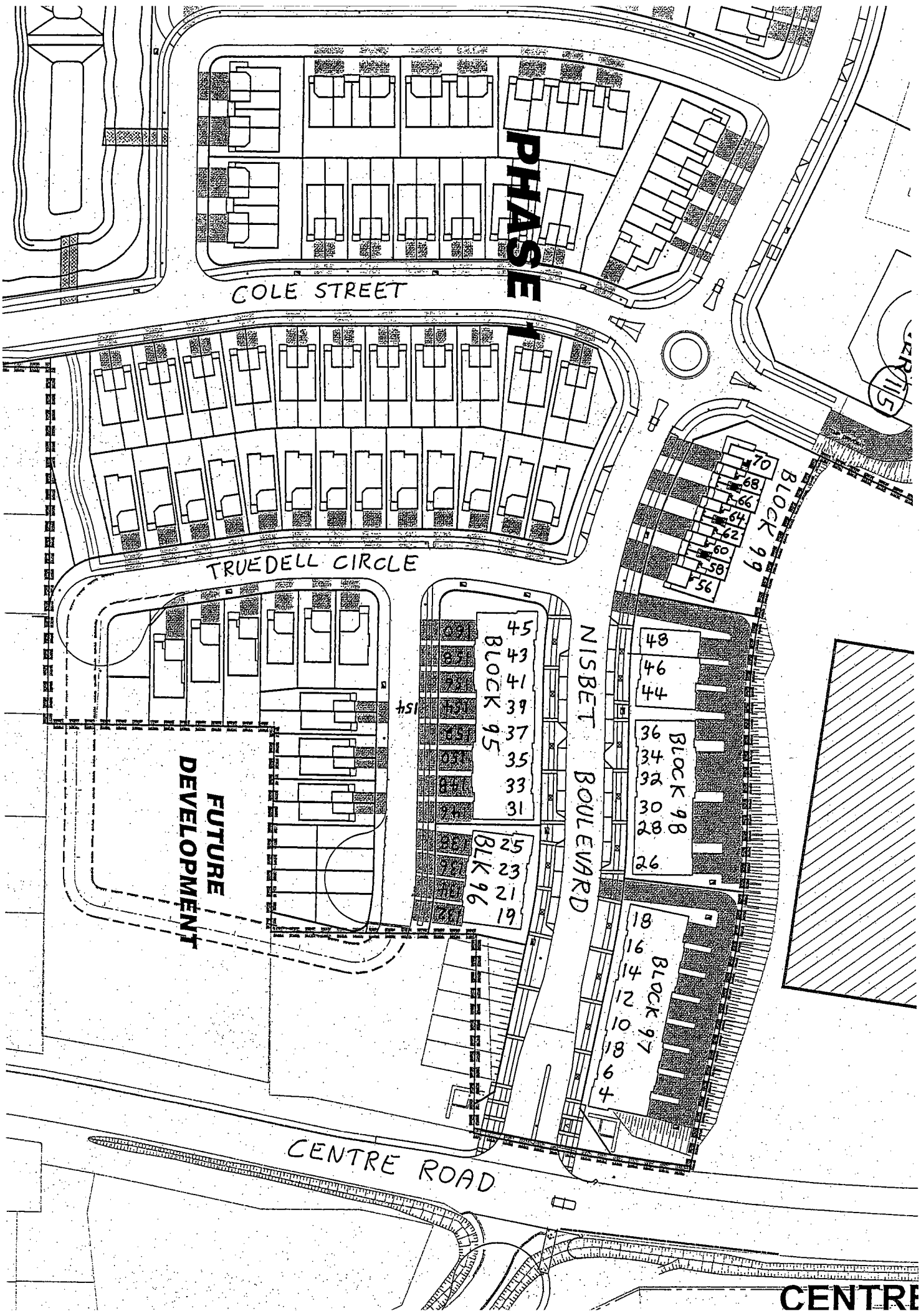
P I N 17511 - 0172 (L71) 26

P I N 17511 - 0172 (L71) 27

P I N 17511 - 0172 (L71) 28

P I N 17511 - 0172 (L71) 29

P I N 17511 - 0172 (L71) 30



PHASE

COLE STREET

TRUEDELL CIRCLE

NISBET BOULEVARD

**FUTURE
DEVELOPMENT**

CENTRE ROAD

CENTRE

45
43
41
39
37
35
33
31
BLOCK 95

25
23
21
19
BLK 96

48
46
44
36
34
32
30
28
26
BLOCK 98

18
16
14
12
10
8
6
4
BLOCK 97

70
68
66
64
62
60
58
56
BLOCK 99

PT. 200mm Wd.
PT. 200mm SAN.
PT. 300mm S.N.
PT. 300mm S.N.

WHITE GATES DRIVE

PARK

SOCCER
PITCH

110

WATON

NISBET BOULEVARD

143
141
139
137
135
133
131
BLOCK 77

125
123
121
119
117
BLOCK 78

111
109
107
105
103
BLOCK 79

8
10
12
14
16
18
20
BLOCK 80

95
93
91
89
87
85
83
81
BLOCK 76

15
17
19
21
23
25
BLOCK 75

PHASE 1

BROWVIEW DRIVE

26
28
30
32
BLOCK 81

38
40
42
44
BLOCK 82

50
52
54
56
BLOCK 83

62
64
66
68
BLOCK 84

31
33
35
37
BLOCK 74

43
45
47
49
BLOCK 73

75
77
79
81
BLOCK 72

87
89
91
93
BLOCK 71

COLE STREET

