



Mailing Address:  
 City Centre, 77 James Street North, Suite 400  
 Hamilton, ON L8R 2K3.  
 Canada L8P 4Y5  
 www.hamilton.ca

Planning and Economic Development Department

Planning Division

Physical Address: City Centre, 77 James Street North, Suite 400

Phone: 905-546-2424 Ext.4348 Fax: 905-546-4202

ptoffole@hamilton.ca

**Hamilton**

September 14, 2009

FILE: 221-B, 221-F, 221-P, 221-R, 221-W  
 25T-200615

Losani Homes  
 201 – 237 Barton Street East  
 Stoney Creek, ON L8E 2K4

S. Llewellyn & Associates Limited  
 3228 South Service Road, Suite 105, East Wing  
 Burlington, ON, L7N 3H8

Yachetti, Lanza & Restivo  
 154 Main Street East, Suite 100  
 Hamilton, ON, L8N 1G9

Dan McLaren Consulting  
 69 John Street South, Suite 320  
 Hamilton, ON, L8N 2B9

**NOTICE OF MUNICIPAL NUMBERS  
 FOR REGISTERED PLAN 62M-1128 "FAIRGROUNDS PHASE 1"**

Attached is a copy of the above Registered Plan for which municipal numbers have been assigned for this subdivision located in the former Township of Glanbrook.

Please update your records accordingly. Should you have any questions regarding the above, please contact Paul Toffoletti at 905-546-2424 Ext.4348.

Michelle Sergi, MCIP, RPP  
 Senior Project Manager, Legislative Approvals,  
 Planning Division, Planning and Economic Development Department.

<b>C.C.</b>		
Electrical Safety Authority	Union Gas	Ham.-Went. School Boards (Public & Separate)
Assessment Commissioner	Fire and Police	Canada Mortgage and Housing Corp.
City of Hamilton	Bell Canada Eng.	Hamilton CACC Ambulance Dispatch
Mountain Cable	Bell Street Guide	Hamilton-Burlington District Real Estate
Hydro One	Bell Canada (911)	Canadian Cartographic Corp.
Canada Post	Map Mobility	Hamilton Automobile Club

62M-1128		FAIRGROUNDS PHASE 1	
Lot No.	Address	Lot No.	Address
1	168 FESTIVAL WAY	59	118 PUMPKIN PASS
2	164 FESTIVAL WAY	60	122 PUMPKIN PASS
3	160 FESTIVAL WAY	61	130 PUMPKIN PASS
4	156 FESTIVAL WAY	62	134 PUMPKIN PASS
5	152 FESTIVAL WAY	63	138 PUMPKIN PASS
6	148 FESTIVAL WAY	64	142 PUMPKIN PASS
7	144 FESTIVAL WAY	65	146 PUMPKIN PASS
8	140 FESTIVAL WAY	66	123 ROYAL WINTER DRIVE
9	136 FESTIVAL WAY	67	155 PUMPKIN PASS
10	132 FESTIVAL WAY	68	151 PUMPKIN PASS
11	47 WINNERS WAY	69	4 KINSMAN DRIVE
12	43 WINNERS WAY	70	8 KINSMAN DRIVE
13	39 WINNERS WAY	71	7 KINSMAN DRIVE
14	35 WINNERS WAY	72	3 KINSMAN DRIVE
15	31 WINNERS WAY	73	56 ROYAL WINTER DRIVE
16	27 WINNERS WAY	74	60 ROYAL WINTER DRIVE
17	23 WINNERS WAY	75	64 ROYAL WINTER DRIVE
18	19 WINNERS WAY	76	68 ROYAL WINTER DRIVE
19	15 WINNERS WAY	77	76 ROYAL WINTER DRIVE
20	11 WINNERS WAY	78	80 ROYAL WINTER DRIVE
21	12 WINNERS WAY	79	84 ROYAL WINTER DRIVE
22	16 WINNERS WAY	80	88 ROYAL WINTER DRIVE
23	20 WINNERS WAY	81	92 ROYAL WINTER DRIVE
24	24 WINNERS WAY	82	96 ROYAL WINTER DRIVE
25	28 WINNERS WAY	83	100 ROYAL WINTER DRIVE
26	32 WINNERS WAY	84	104 ROYAL WINTER DRIVE
27	36 WINNERS WAY	85	108 ROYAL WINTER DRIVE
28	40 WINNERS WAY	86	112 ROYAL WINTER DRIVE
29	44 WINNERS WAY	87	139 PUMPKIN PASS
30	48 WINNERS WAY	88	135 PUMPKIN PASS
31	55 BLUE RIBBON WAY	89	131 PUMPKIN PASS
32	51 BLUE RIBBON WAY	90	123 PUMPKIN PASS
33	47 BLUE RIBBON WAY	91	119 PUMPKIN PASS
34	43 BLUE RIBBON WAY	92	115 PUMPKIN PASS
35	39 BLUE RIBBON WAY	93	111 PUMPKIN PASS
36	35 BLUE RIBBON WAY	94	107 PUMPKIN PASS
37	31 BLUE RIBBON WAY	95	103 PUMPKIN PASS
38	27 BLUE RIBBON WAY	96	99 PUMPKIN PASS
39	23 BLUE RIBBON WAY	97	95 PUMPKIN PASS
40	19 BLUE RIBBON WAY	98	91 PUMPKIN PASS
41	28 BLUE RIBBON WAY	99	87 PUMPKIN PASS
42	24 BLUE RIBBON WAY	100	83 PUMPKIN PASS
43	20 BLUE RIBBON WAY	101	79 PUMPKIN PASS
44	16 BLUE RIBBON WAY	102	75 PUMPKIN PASS
45	12 BLUE RIBBON WAY	103	71 PUMPKIN PASS
46	8 BLUE RIBBON WAY	104	67 PUMPKIN PASS
47	4 BLUE RIBBON WAY		
48	56 PUMPKIN PASS	Block 105	18 PUMPKIN PASS
49	60 PUMPKIN PASS	Block 105	20 PUMPKIN PASS
50	64 PUMPKIN PASS	Block 105	22 PUMPKIN PASS
51	68 PUMPKIN PASS	Block 105	24 PUMPKIN PASS
52	72 PUMPKIN PASS		
53	86 PUMPKIN PASS	Block 107 Open Space	25 ROYAL WINTER DRIVE
54	90 PUMPKIN PASS		
55	94 PUMPKIN PASS	Block 108 Elem. School	35 PUMPKIN PASS
56	98 PUMPKIN PASS		
57	102 PUMPKIN PASS		
58	114 PUMPKIN PASS		

	62M-1128				FAIRGROUNDS PHASE 1 Table two of two
Lot No.	Address				
Block 109	28	PUMPKIN PASS			
Block 109	30	PUMPKIN PASS			
Block 109	32	PUMPKIN PASS			
Block 109	34	PUMPKIN PASS			
Block 111	32	BLUE RIBBON WAY			
Block 112	40	BLUE RIBBON WAY			
Block 113	44	BLUE RIBBON WAY			
Block 114	48	BLUE RIBBON WAY			
Block 115	52	BLUE RIBBON WAY			
Block 116	56	BLUE RIBBON WAY			

PLAN 62M-1128  
 PART 1  
 A.S.N. 17386 - 18473  
 PLAN 62R-18473

PLAN 17386-18473  
 PART 2  
 A.S.N. 17386 - 18473  
 PLAN 62R-18473

PLAN 17386-18473  
 PART 3  
 A.S.N. 17386 - 18473  
 PLAN 62R-18473

PLAN 17386-18473  
 PART 4  
 A.S.N. 17386 - 18473  
 PLAN 62R-18473

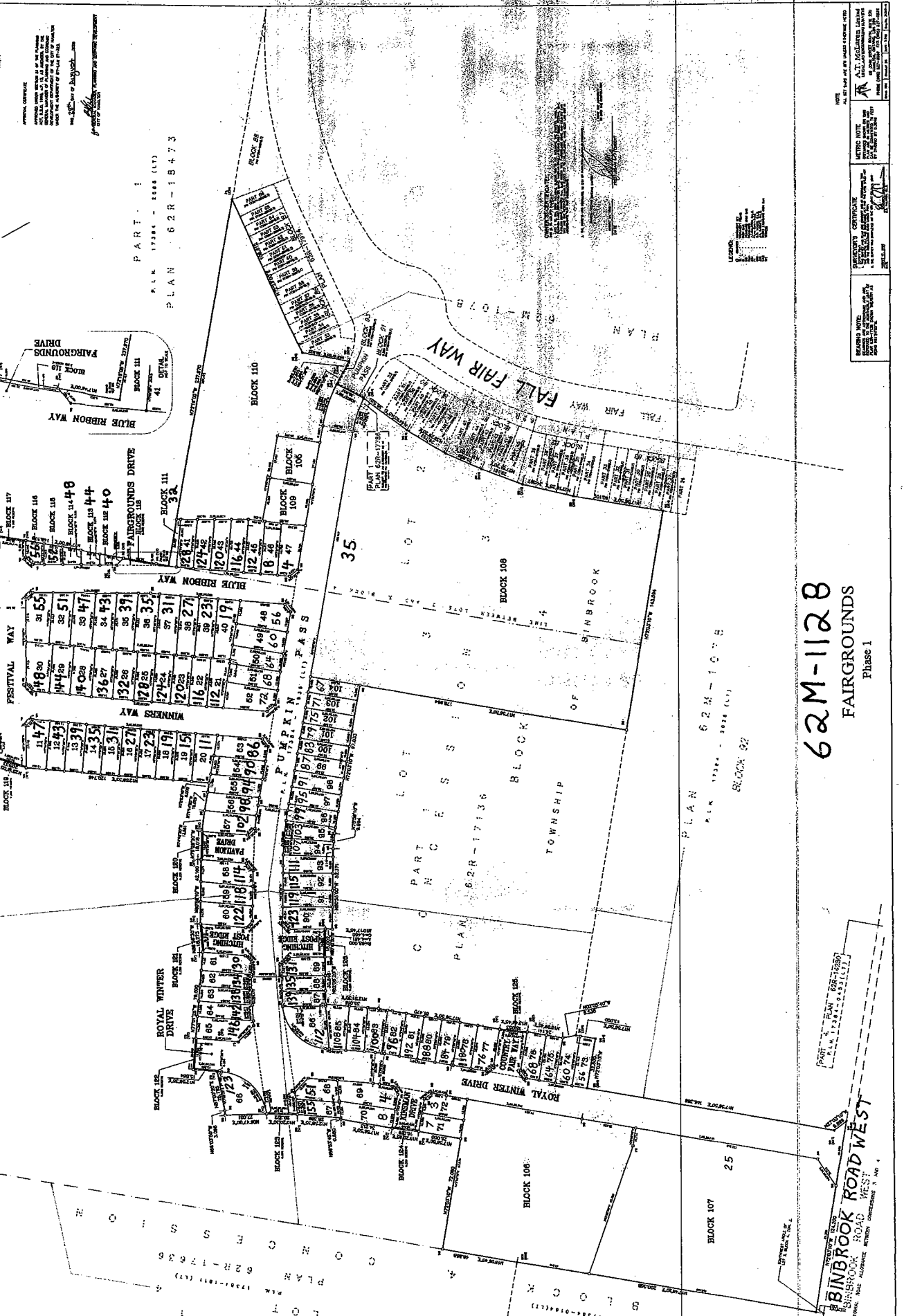
PLAN 17386-18473  
 PART 5  
 A.S.N. 17386 - 18473  
 PLAN 62R-18473

PLAN 17386-18473  
 PART 6  
 A.S.N. 17386 - 18473  
 PLAN 62R-18473

PLAN 17386-18473  
 PART 7  
 A.S.N. 17386 - 18473  
 PLAN 62R-18473

PLAN 17386-18473  
 PART 8  
 A.S.N. 17386 - 18473  
 PLAN 62R-18473

PLAN 17386-18473  
 PART 9  
 A.S.N. 17386 - 18473  
 PLAN 62R-18473



**62M-1128**  
 FAIRGROUNDS  
 Phase 1

PLAN 62M-1078  
 A.S.N. 17386 - 18473 (L1)  
 BLOCK 92

PLAN 17386-18473  
 PART 10  
 A.S.N. 17386 - 18473  
 PLAN 62R-18473

RECORDS NOTE  
 THIS PLAN IS SUBJECT TO THE CITY OF SIMBROOK ZONING BY-LAW AND THE CITY OF SIMBROOK SUBDIVISION BY-LAW.

RECORDS NOTE  
 THIS PLAN IS SUBJECT TO THE CITY OF SIMBROOK ZONING BY-LAW AND THE CITY OF SIMBROOK SUBDIVISION BY-LAW.

RECORDS NOTE  
 THIS PLAN IS SUBJECT TO THE CITY OF SIMBROOK ZONING BY-LAW AND THE CITY OF SIMBROOK SUBDIVISION BY-LAW.

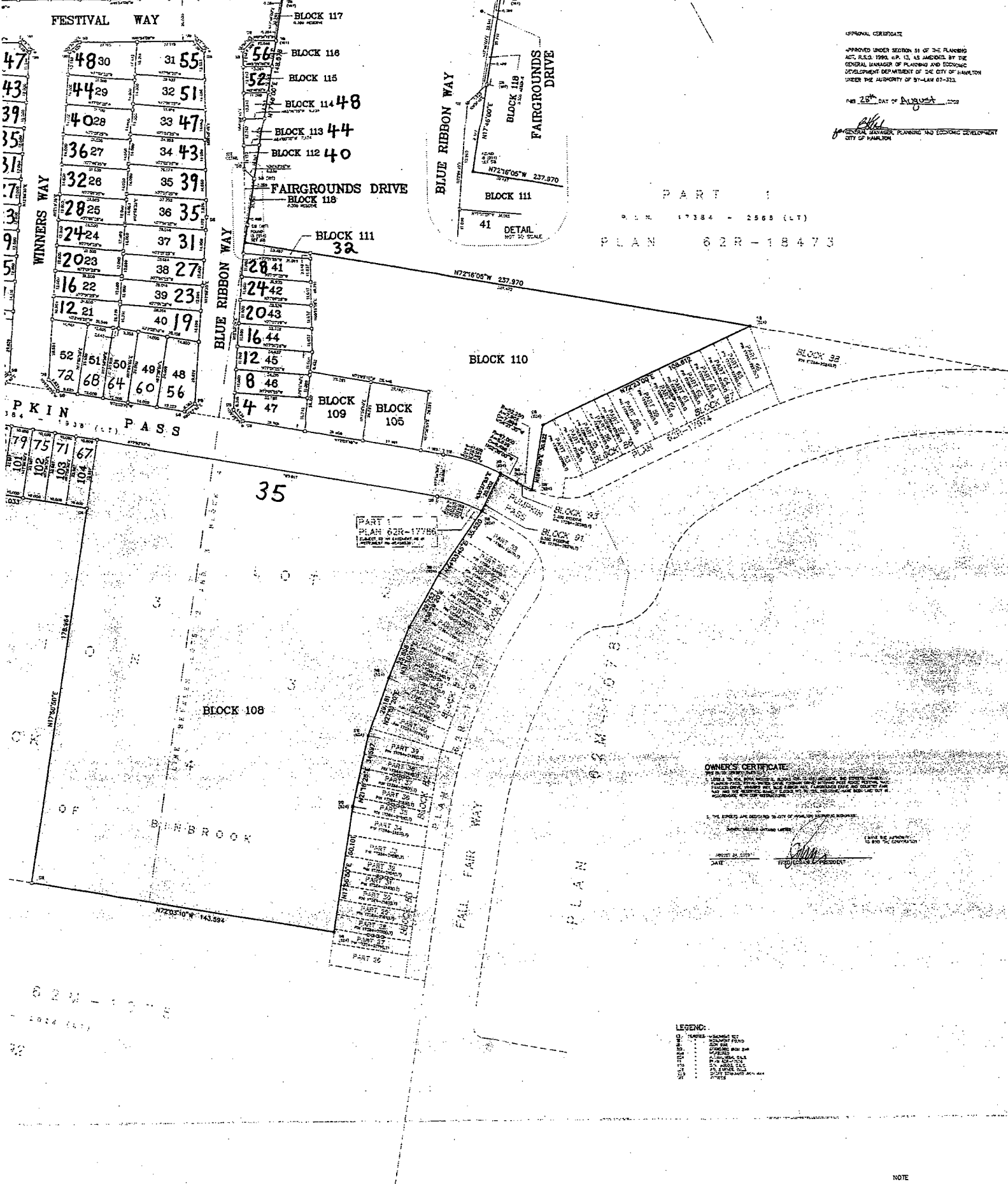
RECORDS NOTE  
 THIS PLAN IS SUBJECT TO THE CITY OF SIMBROOK ZONING BY-LAW AND THE CITY OF SIMBROOK SUBDIVISION BY-LAW.

RECORDS NOTE  
 THIS PLAN IS SUBJECT TO THE CITY OF SIMBROOK ZONING BY-LAW AND THE CITY OF SIMBROOK SUBDIVISION BY-LAW.

1	2	3	4	5	6	7	8	9	10
164	160	156	152	148	144	140	136	132	



ON THE DAY OF 200  
 AND ENTERED IN THE PARCEL REGISTER  
 FOR PRIORITY ORDER.  
 AND REQUIRED CONSENTS  
 ARE REQUIRED AS PLAN  
 DOCUMENT NO.  
 LAND REGISTRAR  
 THIS PLAN COMPRISES PART OF  
 PLAN 17384-102417



APPROVAL CERTIFICATE  
 APPROVED UNDER SECTION 51 OF THE PLANNING  
 ACT, R.S.O. 1990, C.P. 13, AS AMENDED BY THE  
 GENERAL MANAGER OF PLANNING AND ECONOMIC  
 DEVELOPMENT DEPARTMENT OF THE CITY OF HAMILTON  
 UNDER THE AUTHORITY OF ST-LAW 01-312.  
 THE 28th DAY OF AUGUST 2009  
 GENERAL MANAGER, PLANNING AND ECONOMIC DEVELOPMENT  
 CITY OF HAMILTON

PART 1  
 P.L.N. 17384 - 2568 (LT)  
 PLAN 02R-18473

PART 1  
 PLAN 02R-17786  
 Laid out by the City of Hamilton  
 under the authority of St-Law 01-312

OWNER'S CERTIFICATE  
 I, THE UNDERSIGNED, OWNER OF THE ABOVE DESCRIBED PROPERTY, HEREBY CERTIFY THAT THE INFORMATION CONTAINED HEREIN IS TRUE AND CORRECT TO THE BEST OF MY KNOWLEDGE AND BELIEF.  
 I, THE UNDERSIGNED, HAVE RECEIVED FROM THE CITY OF HAMILTON A SURVEYOR'S CERTIFICATE AND A COPY OF THE SURVEYOR'S REPORT AND THE CITY OF HAMILTON HAS REVIEWED THE SAME AND IS SATISFIED THAT THE INFORMATION CONTAINED HEREIN IS TRUE AND CORRECT TO THE BEST OF MY KNOWLEDGE AND BELIEF.  
 I, THE UNDERSIGNED, HAVE RECEIVED FROM THE CITY OF HAMILTON A SURVEYOR'S CERTIFICATE AND A COPY OF THE SURVEYOR'S REPORT AND THE CITY OF HAMILTON HAS REVIEWED THE SAME AND IS SATISFIED THAT THE INFORMATION CONTAINED HEREIN IS TRUE AND CORRECT TO THE BEST OF MY KNOWLEDGE AND BELIEF.  
 SIGNED AND DELIVERED BY THE UNDERSIGNED  
 DATE: \_\_\_\_\_  
 FREDERICK M. BURNETT

- LEGEND:
- METERS - VISIBLE SET
  - METERS - VISIBLE FORD
  - METERS - NEW SET
  - METERS - NEW FORD
  - METERS - OLD SET
  - METERS - OLD FORD
  - METERS - OLD SET AND FORD
  - METERS - OLD SET AND FORD
  - METERS - OLD SET AND FORD
  - METERS - OLD SET AND FORD

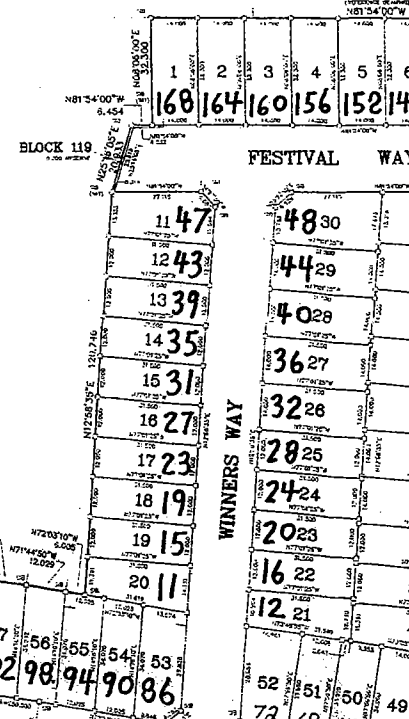
NOTE  
 ALL SET BARS ARE 2'S UNLESS OTHERWISE NOTED

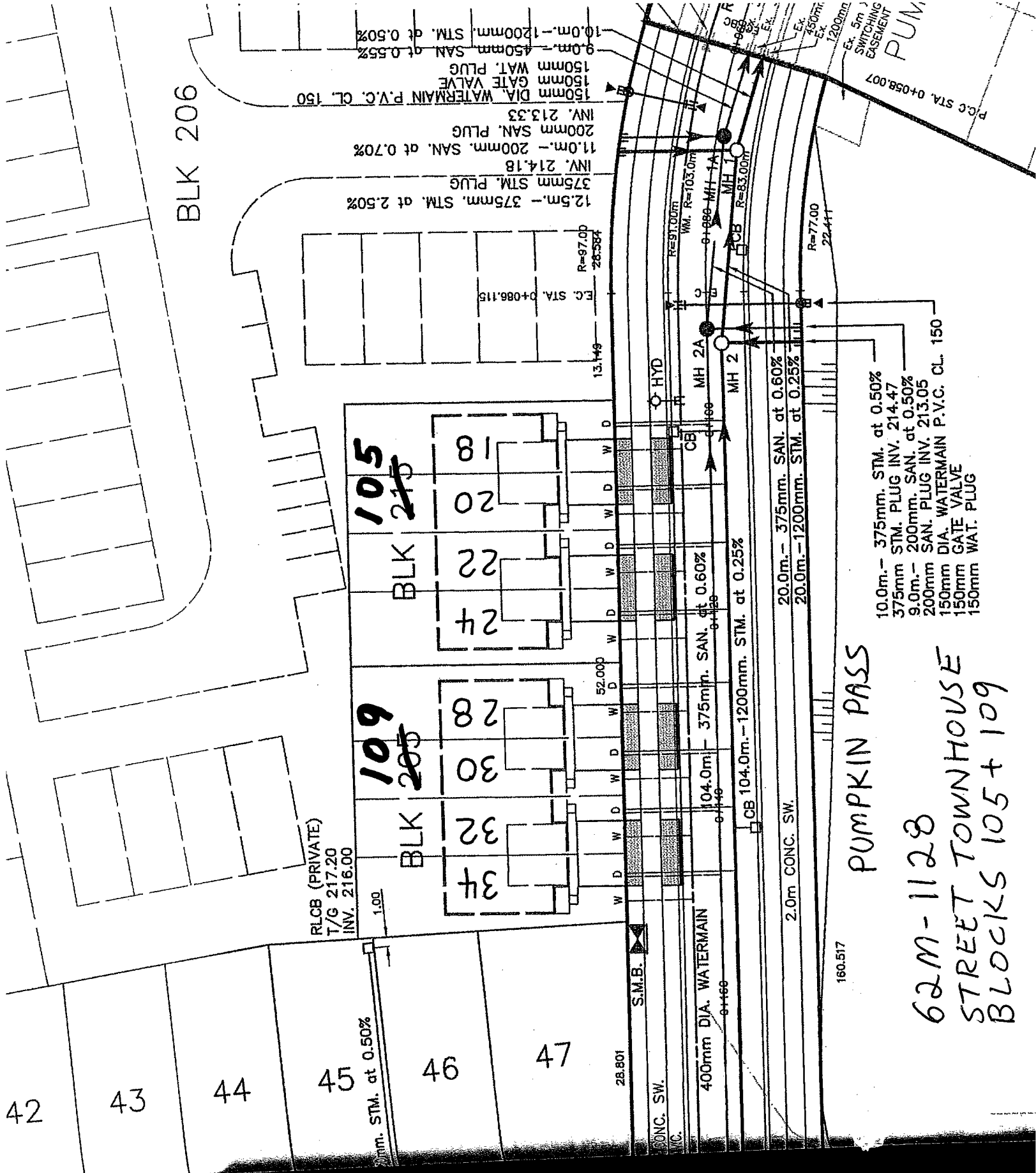
FAIRGROUNDS

SURVEYOR'S CERTIFICATE

PART 1  
LOT  
P.L.N. 17384-0164(LT)  
PLAN 62R-17656  
CONCRETE

P.L.N. 17384-0164(LT)  
BLOCK  
S L O C K  
N174820'E 200.556





BLK 206

105  
BLK 215

109  
BLK 205

RLCB (PRIVATE)  
T/G 217.20  
INV. 216.00

120mm. STM. at 0.50%

45

46

47

42

43

44

BLK 22

24

20

18

28

30

32

34

12.5m. - 375mm. STM. at 2.50%

375mm STM. PLUG  
INV. 214.18

11.0m. - 200mm. SAN. at 0.70%

200mm SAN. PLUG  
INV. 213.33

150mm DIA. WATERMAIN P.V.C. CL. 150  
150mm GATE VALVE  
150mm WAT. PLUG

9.0m. - 450mm SAN at 0.55%

10.0m. - 1200mm. STM. at 0.50%

CONC. SW.

400mm DIA. WATERMAIN

104.0m. - 375mm. SAN. at 0.60%

2.0m CONC. SW.

20.0m. - 375mm. SAN. at 0.60%

20.0m. - 1200mm. STM. at 0.25%

160.517

PUMPKIN PASS

62M-1128  
STREET TOWNHOUSE  
BLOCKS 105 + 109

10.0m. - 375mm. STM. at 0.50%

375mm STM. PLUG INV. 214.47

9.0m. - 200mm. SAN. at 0.50%

200mm SAN. PLUG INV. 213.05

150mm DIA. WATERMAIN P.V.C. CL. 150

150mm GATE VALVE

150mm WAT. PLUG

1200mm  
SWITCHING  
EASEMENT

PCC STA. 0+058.007

PUM

RESTROOM

WM. R=103.0m

0+888 MH-1A

0+888 MH-1

0+888 MH-2

0+888 MH-2A

0+888 MH-2

0+888 MH-2A

0+888 MH-2

0+888 MH-2A

0+888 MH-2

0+888 MH-2A

0+888 MH-2