



Mailing Address:  
 City Centre, 77 James Street North, Suite 400  
 Hamilton, ON L8R 2K3.  
 www.hamilton.ca

Planning and Economic Development Department

Planning Division

Physical Address: City Centre, 77 James Street North, Suite 400

Phone: 905-546-2424 Ext.4348 Fax: 905-546-4202

ptoffole@hamilton.ca

**Hamilton**

February 1, 2010

FILE: 221-B, -C, -E -H, -K, -M, -O, -P -R, -S  
 25T-200711

Mattamy (Southcote) Limited  
 c/o Ian Macpherson  
 2360 Bristol Circle  
 Oakville, ON, L6M 6M5

A.T. McLaren Ltd.  
 c/o Dan McLaren  
 69 John Street South, Suite 230  
 Hamilton, ON, L8N 2B9

Rand Engineering Corporation  
 c/o Ted Goddard, P.Eng.  
 5285 Solar Drive  
 Mississauga, ON, L4W 5B8

**NOTICE OF MUNICIPAL ADDRESSES  
 FOR REGISTERED PLAN 62M-1135 "ANCASTER ARBOUR".**

Attached is a table of the municipal addresses that have been assigned, along with a copy of the above Registered Plan for this subdivision located in the former Town of Ancaster.

**In addition, please note that the following municipal addresses have been retired and should no longer be used.**

- 617 Garner Road East – Roll Number 251814028031800
- 621 Garner Road East – Roll Number 251814028031800
- 625 Garner Road East – Roll Number 251814028031800

Please update your records accordingly. Should you have any questions regarding the above, please contact Paul Toffoletti at 905-546-2424 Ext.4348.

Michelle Sergi, MCIP, RPP  
 Senior Project Manager, Legislative Approvals,  
 Planning Division, Planning and Economic Development Department.

c.c.  
 Electrical Safety  
 Authority  
 MPAC  
 City of Hamilton  
 Cogeco Cable  
 Hydro One  
 Canada Post

Union Gas  
 Fire and Police  
 Bell Canada Eng.  
 Bell Street Guide  
 Bell Canada (911)  
 Map Mobility

Ham.-Went. School Boards (Public &  
 Separate)  
 Canada Mortgage and Housing Corp.  
 Hamilton CACC Ambulance Dispatch  
 Hamilton-Burlington District Real Estate  
 Canadian Cartographic Corp.  
 Hamilton Automobile Club

	62M-1135		ANCASTER ARBOUR
Lot No.	Address	Lot No.	Address
BLK 1 – Unit 1	15 HEPWORTH CRESCENT (Private)	3	354 KITTY MURRAY LANE
BLK 1 – Unit 2	17 HEPWORTH CRESCENT (Private)	4	8 CRANSTON STREET
BLK 1 – Unit 3	19 HEPWORTH CRESCENT (Private)	5	12 CRANSTON STREET
BLK 1 – Unit 4	21 HEPWORTH CRESCENT (Private)	6	16 CRANSTON STREET
BLK 1 – Unit 5	23 HEPWORTH CRESCENT (Private)	7	61 BARNACLE CRESCENT
BLK 1 – Unit 6	27 HEPWORTH CRESCENT (Private)	8	60 BARNACLE CRESCENT
BLK 1 – Unit 7	29 HEPWORTH CRESCENT (Private)	9	38 CRANSTON STREET
BLK 1 – Unit 8	31 HEPWORTH CRESCENT (Private)	10	42 CRANSTON STREET
BLK 1 – Unit 9	33 HEPWORTH CRESCENT (Private)	11	46 CRANSTON STREET
BLK 1 – Unit 10	35 HEPWORTH CRESCENT (Private)	12	50 CRANSTON STREET
BLK 1 – Unit 11	37 HEPWORTH CRESCENT (Private)	13	54 CRANSTON STREET
BLK 1 – Unit 12	32 HEPWORTH CRESCENT (Private)	14	58 CRANSTON STREET
BLK 1 – Unit 13	30 HEPWORTH CRESCENT (Private)	15	62 CRANSTON STREET
BLK 1 – Unit 14	28 HEPWORTH CRESCENT (Private)	16	66 CRANSTON STREET
BLK 1 – Unit 15	26 HEPWORTH CRESCENT (Private)	17	70 CRANSTON STREET
BLK 1 – Unit 16	22 HEPWORTH CRESCENT (Private)	18	74 CRANSTON STREET
BLK 1 – Unit 17	20 HEPWORTH CRESCENT (Private)	19	80 CRANSTON STREET
BLK 1 – Unit 18	18 HEPWORTH CRESCENT (Private)	20	84 CRANSTON STREET
BLK 1 – Unit 19	16 HEPWORTH CRESCENT (Private)	21	88 CRANSTON STREET
BLK 1 – Unit 20	72 HEPWORTH CRESCENT (Private)	22	92 CRANSTON STREET
BLK 1 – Unit 21	70 HEPWORTH CRESCENT (Private)	23	96 CRANSTON STREET
BLK 1 – Unit 22	68 HEPWORTH CRESCENT (Private)	24	100 CRANSTON STREET
BLK 1 – Unit 23	66 HEPWORTH CRESCENT (Private)	25	104 CRANSTON STREET
BLK 1 – Unit 24	62 HEPWORTH CRESCENT (Private)	26	108 CRANSTON STREET
BLK 1 – Unit 25	60 HEPWORTH CRESCENT (Private)	27	112 CRANSTON STREET
BLK 1 – Unit 26	58 HEPWORTH CRESCENT (Private)	28	116CRANSTON STREET
BLK 1 – Unit 27	56 HEPWORTH CRESCENT (Private)	29	25 ROELFSON DRIVE
BLK 1 – Unit 28	51 HEPWORTH CRESCENT (Private)	30	24 ROELFSON DRIVE
BLK 1 – Unit 29	53 HEPWORTH CRESCENT (Private)	31	30 ROELFSON DRIVE
BLK 1 – Unit 30	55 HEPWORTH CRESCENT (Private)	32	34 ROELFSON DRIVE
BLK 1 – Unit 31	57 HEPWORTH CRESCENT (Private)	33	38 ROELFSON DRIVE
BLK 1 – Unit 32	59 HEPWORTH CRESCENT (Private)	34	42 ROELFSON DRIVE
BLK 1 – Unit 33	61 HEPWORTH CRESCENT (Private)	35	46 ROELFSON DRIVE
BLK 1 – Unit 34	65 HEPWORTH CRESCENT (Private)	36	50 ROELFSON DRIVE
BLK 1 – Unit 35	67 HEPWORTH CRESCENT (Private)	37	54 ROELFSON DRIVE
BLK 1 – Unit 36	69 HEPWORTH CRESCENT (Private)	38	265 EMICK DRIVE
BLK 1 – Unit 37	71 HEPWORTH CRESCENT (Private)	39	266 EMICK DRIVE
BLK 1 – Unit 38	73 HEPWORTH CRESCENT (Private)	40	75 ROELFSON DRIVE
BLK 1 – Unit 39	75 HEPWORTH CRESCENT (Private)	41	79 ROELFSON DRIVE
BLK 1 – Unit 40	79 HEPWORTH CRESCENT (Private)	42	410 KITTY MURRAY LANE
BLK 1 – Unit 41	81 HEPWORTH CRESCENT (Private)	43	400 KITTY MURRAY LANE
BLK 1 – Unit 42	83 HEPWORTH CRESCENT (Private)	44	81 ROELFSON DRIVE
BLK 1 – Unit 43	76 HEPWORTH CRESCENT (Private)	45	77 ROELFSON DRIVE
BLK 1 – Unit 44	78 HEPWORTH CRESCENT (Private)	46	73 ROELFSON DRIVE
BLK 1 – Unit 45	80 HEPWORTH CRESCENT (Private)	47	69 ROELFSON DRIVE
BLK 1 – Unit 46	8 HEPWORTH CRESCENT (Private)	48	65 ROELFSON DRIVE
BLK 1 – Unit 47	6 HEPWORTH CRESCENT (Private)	49	59 ROELFSON DRIVE
BLK 1 – Unit 48	4 HEPWORTH CRESCENT (Private)	50	55 ROELFSON DRIVE
BLK 1 – Unit 49	9 HEPWORTH CRESCENT (Private)	51	51ROELFSON DRIVE
BLK 1 – Unit 50	7 HEPWORTH CRESCENT (Private)	52	47 ROELFSON DRIVE
BLK 1 – Unit 51	5 HEPWORTH CRESCENT (Private)	53	41 ROELFSON DRIVE
BLK 1 – Unit 52	3HEPWORTH CRESCENT (Private)	54	115 CRANSTON STREET
		55	111 CRANSTON STREET
		56	107 CRANSTON STREET
		57	103 CRANSTON STREET
		58	99 CRANSTON STREET
		59	95 CRANSTON STREET

	62M-1135		ANCASTER ARBOUR
Lot No.	Address		
60	91 CRANSTON STREET	118	128 EMICK DRIVE
61	87 CRANSTON STREET	119	132 EMICK DRIVE
62	83 CRANSTON STREET		
63	73 CRANSTON STREET	Block 121	470 KITTY MURRAY LANE - school
64	51 CRANSTON STREET		
65	47 CRANSTON STREET	Block 122	135 EMICK DRIVE - park
66	43 CRANSTON STREET		
67	39 CRANSTON STREET	Block 125	79 CRANSTON STREET – Storm Water Pond
68	35 CRANSTON STREET		
69	31 CRANSTON STREET	127	138 EMICK DRIVE
70	27 CRANSTON STREET	128	142 EMICK DRIVE
71	23 CRANSTON STREET	129	146 EMICK DRIVE
72	19 CRANSTON STREET	130	150 EMICK DRIVE
73	15 CRANSTON STREET	131	154 EMICK DRIVE
74	11 CRANSTON STREET	132	158 EMICK DRIVE
75	7 CRANSTON STREET	133	162 EMICK DRIVE
76	366 KITTY MURRAY LANE	134	166 EMICK DRIVE
77	423 SOUTHCOTE ROAD	135	170 EMICK DRIVE
78	215 MOORLAND CRESCENT	136	174 EMICK DRIVE
79	216 MOORLAND CRESCENT	137	178 EMICK DRIVE
80	416 KITTY MURRAY LANE	138	182 EMICK DRIVE
81	418 KITTY MURRAY LANE	139	186 EMICK DRIVE
82	420 KITTY MURRAY LANE	140	206 EMICK DRIVE
83	422 KITTY MURRAY LANE	141	212 EMICK DRIVE
84	424 KITTY MURRAY LANE	142	216 EMICK DRIVE
85	426 KITTY MURRAY LANE	143	220 EMICK DRIVE
86	428 KITTY MURRAY LANE	144	224 EMICK DRIVE
87	480 KITTY MURRAY LANE	145	228 EMICK DRIVE
88	484 KITTY MURRAY LANE	146	232 EMICK DRIVE
89	488 KITTY MURRAY LANE	147	236 EMICK DRIVE
90	492 KITTY MURRAY LANE	148	240 EMICK DRIVE
91	496 KITTY MURRAY LANE	149	244 EMICK DRIVE
92	500 KITTY MURRAY LANE	150	248 EMICK DRIVE
93	504 KITTY MURRAY LANE	151	252 EMICK DRIVE
94	6 EMICK DRIVE	152	256 EMICK DRIVE
95	12 EMICK DRIVE	153	260 EMICK DRIVE
96	8 OHara LANE	154	253 EMICK DRIVE
97	12 OHara LANE	155	227 EMICK DRIVE
98	16 OHara LANE	156	223 EMICK DRIVE
99	20 OHara LANE	157	219 EMICK DRIVE
100	24 OHara LANE	158	215 EMICK DRIVE
101	28 OHara LANE	159	211 EMICK DRIVE
102	32 OHara LANE	160	207 EMICK DRIVE
Block 103	See next page	161	203 EMICK DRIVE
Block 104	See next page	162	199 EMICK DRIVE
Block 105	See next page	163	195 EMICK DRIVE
Block 106	See next page	164	191 EMICK DRIVE
Block 107	See next page	165	187 EMICK DRIVE
Block 108	See next page	166	183 EMICK DRIVE
Block 109	See next page	167	179 EMICK DRIVE
Block 110	See next page	168	173 EMICK DRIVE
111	100 EMICK DRIVE	169	169 EMICK DRIVE
112	104 EMICK DRIVE	170	165 EMICK DRIVE
113	108 EMICK DRIVE	171	161 EMICK DRIVE
114	112 EMICK DRIVE	172	157 EMICK DRIVE
115	116 EMICK DRIVE	173	153 EMICK DRIVE
116	120 EMICK DRIVE	174	119 EMICK DRIVE
117	124 EMICK DRIVE	175	115 EMICK DRIVE

62M-1135		ANCASTER ARBOUR	
Lot No.	Address	Lot No.	Address
176	111 EMICK DRIVE	Block 103	7 EMICK DRIVE
177	107 EMICK DRIVE	Block 103	9 EMICK DRIVE
178	103 EMICK DRIVE	Block 103	11 EMICK DRIVE
179	99 EMICK DRIVE	Block 103	13 EMICK DRIVE
180	95 EMICK DRIVE	Block 103	15 EMICK DRIVE
181	6 PEER COURT		
182	5 PEER COURT	Block 104	19 EMICK DRIVE
183	79 EMICK DRIVE	Block 104	21 EMICK DRIVE
184	75 EMICK DRIVE	Block 104	23 EMICK DRIVE
185	71 EMICK DRIVE	Block 104	25 EMICK DRIVE
186	67 EMICK DRIVE	Block 104	27 EMICK DRIVE
187	63 EMICK DRIVE	Block 104	29 EMICK DRIVE
188	11 PEER COURT		
189	15 PEER COURT	Block 105	30 EMICK DRIVE
190	19 PEER COURT	Block 105	32 EMICK DRIVE
191	23 PEER COURT	Block 105	34 EMICK DRIVE
192	27 PEER COURT	Block 105	36 EMICK DRIVE
193	31 PEER COURT	Block 105	38 EMICK DRIVE
194	35 PEER COURT	Block 105	40 EMICK DRIVE
195	39 PEER COURT	Block 105	42 EMICK DRIVE
196	43 PEER COURT	Block 105	44 EMICK DRIVE
197	47 PEER COURT		
198	51 PEER COURT	Block 106	48 EMICK DRIVE
199	55 PEER COURT	Block 106	50 EMICK DRIVE
200	59 PEER COURT	Block 106	52 EMICK DRIVE
201	65 PEER COURT	Block 106	54 EMICK DRIVE
202	69 PEER COURT	Block 106	56 EMICK DRIVE
203	73 PEER COURT		
204	77 PEER COURT	Block 107	57 OHara LANE
205	81 PEER COURT	Block 107	59 OHara LANE
206	85 PEER COURT	Block 107	61 OHara LANE
207	89 PEER COURT	Block 107	63 OHara LANE
208	93 PEER COURT	Block 107	65 OHara LANE
209	97 PEER COURT		
210	101 PEER COURT	Block 108	39 OHara LANE
211	105 PEER COURT	Block 108	41 OHara LANE
212	109 PEER COURT	Block 108	43 OHara LANE
213	113 PEER COURT	Block 108	45 OHara LANE
214	117 PEER COURT	Block 108	47 OHara LANE
215	121 PEER COURT	Block 108	49 OHara LANE
216	125 PEER COURT	Block 108	51 OHara LANE
217	120 PEER COURT	Block 108	53 OHara LANE
218	116 PEER COURT		
219	108 PEER COURT	Block 109	36 OHara LANE
220	104 PEER COURT	Block 109	38 OHara LANE
221	100 PEER COURT	Block 109	40 OHara LANE
222	96 PEER COURT	Block 109	42 OHara LANE
223	92 PEER COURT	Block 109	44 OHara LANE
224	88 PEER COURT	Block 109	46 OHara LANE
225	60 PEER COURT	Block 109	48 OHara LANE
226	56 PEER COURT	Block 109	50 OHara LANE
227	52 PEER COURT		
228	48 PEER COURT	Block 110	54 OHara LANE
229	44 PEER COURT	Block 110	56 OHara LANE
230	40 PEER COURT	Block 110	58 OHara LANE
231	36 PEER COURT	Block 110	60 OHara LANE
232	12 PEER COURT	Block 110	62 OHara LANE
		Block 110	64 OHara LANE
Blk 103	3 EMICK DRIVE	Block 110	66 OHara LANE
Blk 103	5 EMICK DRIVE		

ANCASTER ARBOUR

62M-1135

PLAN OF SUBDIVISION OF PART OF LOT 48 CONCESSION 3

SCALE 1:750 METRIC S.D. McLAREN O.L.S. - 2000

APPROVAL CERTIFICATE APPROVED UNDER SECTION 34 OF THE PLANNING AND BUILDING ACT, 1975

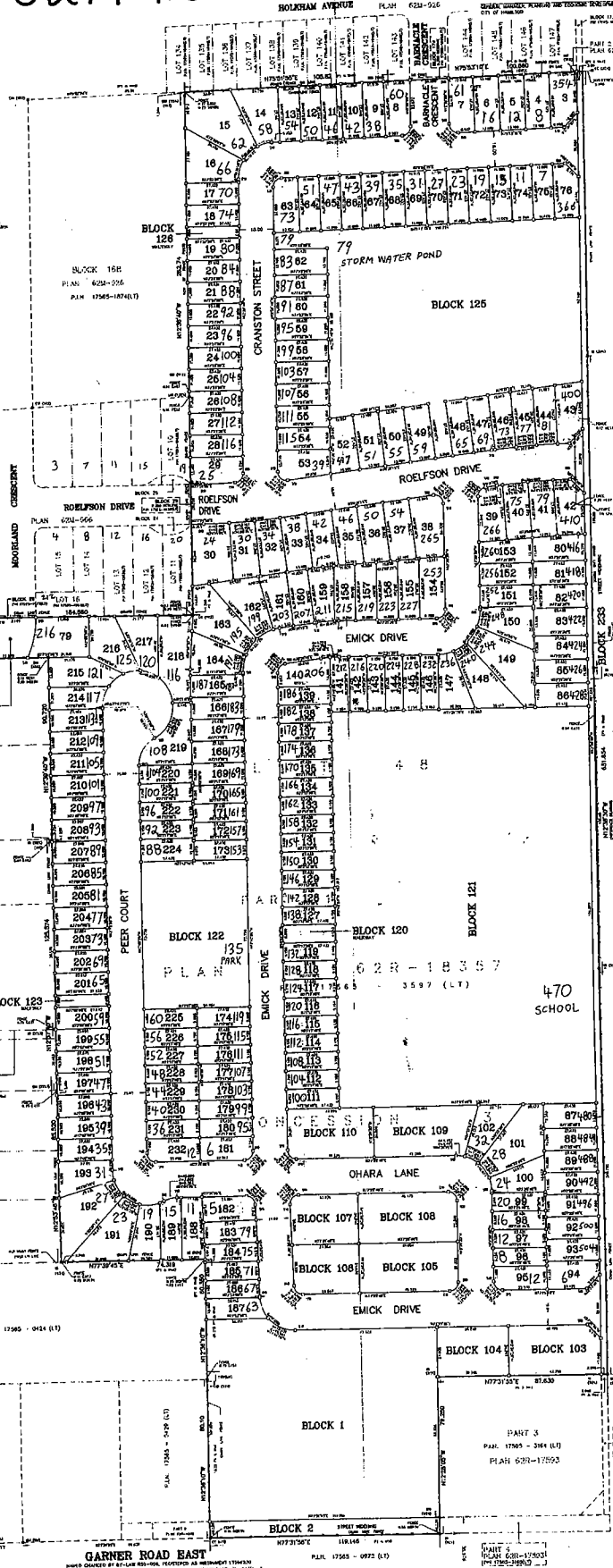
PLAN 62M-1135

OWNER'S CERTIFICATE

LOT 1 LOT 2 LOT 3 LOT 4

SOUTHCOTE ROAD

PART 1 PLAN 62M-1741



KITTY MURRAY LANE

470 SCHOOL

GARTNER ROAD EAST

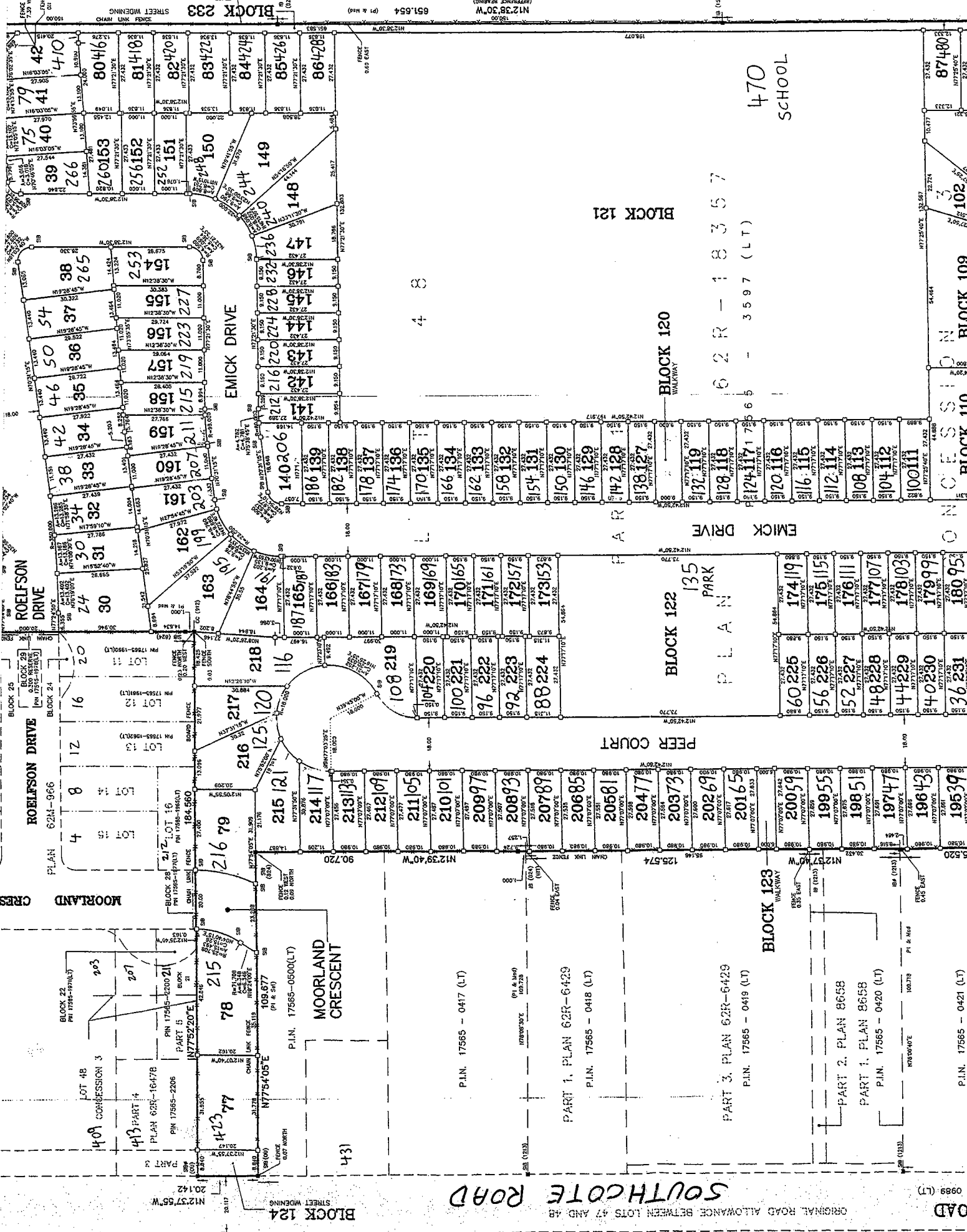
BEARING NOTE

OWNER'S CERTIFICATE

METRIC NOTE

A.T. McLaren Limited





470 SCHOOL

62R - 18357 (LT)

65 - 3597 (LT)

62R - 18357 (LT)

65 - 3597 (LT)

62R - 18357 (LT)

65 - 3597 (LT)

62R - 18357 (LT)

65 - 3597 (LT)

62R - 18357 (LT)

65 - 3597 (LT)

62R - 18357 (LT)

65 - 3597 (LT)

62R - 18357 (LT)

65 - 3597 (LT)

BLOCK 121  
BLOCK 120  
BLOCK 119  
BLOCK 118  
BLOCK 117  
BLOCK 116  
BLOCK 115  
BLOCK 114  
BLOCK 113  
BLOCK 112  
BLOCK 111  
BLOCK 110  
BLOCK 109  
BLOCK 108  
BLOCK 107  
BLOCK 106  
BLOCK 105  
BLOCK 104  
BLOCK 103  
BLOCK 102  
BLOCK 101

BLOCK 25  
BLOCK 24  
BLOCK 23  
BLOCK 22  
BLOCK 21  
BLOCK 20  
BLOCK 19  
BLOCK 18  
BLOCK 17  
BLOCK 16  
BLOCK 15  
BLOCK 14  
BLOCK 13  
BLOCK 12  
BLOCK 11  
BLOCK 10  
BLOCK 9  
BLOCK 8  
BLOCK 7  
BLOCK 6  
BLOCK 5  
BLOCK 4  
BLOCK 3  
BLOCK 2  
BLOCK 1

MOORLAND CRES  
PEERS DRIVE  
EMICK DRIVE  
SOUTH COTE ROAD

MOORLAND CRES  
PEERS DRIVE  
EMICK DRIVE  
SOUTH COTE ROAD

MOORLAND CRES  
PEERS DRIVE  
EMICK DRIVE  
SOUTH COTE ROAD

MOORLAND CRES  
PEERS DRIVE  
EMICK DRIVE  
SOUTH COTE ROAD

MOORLAND CRES  
PEERS DRIVE  
EMICK DRIVE  
SOUTH COTE ROAD

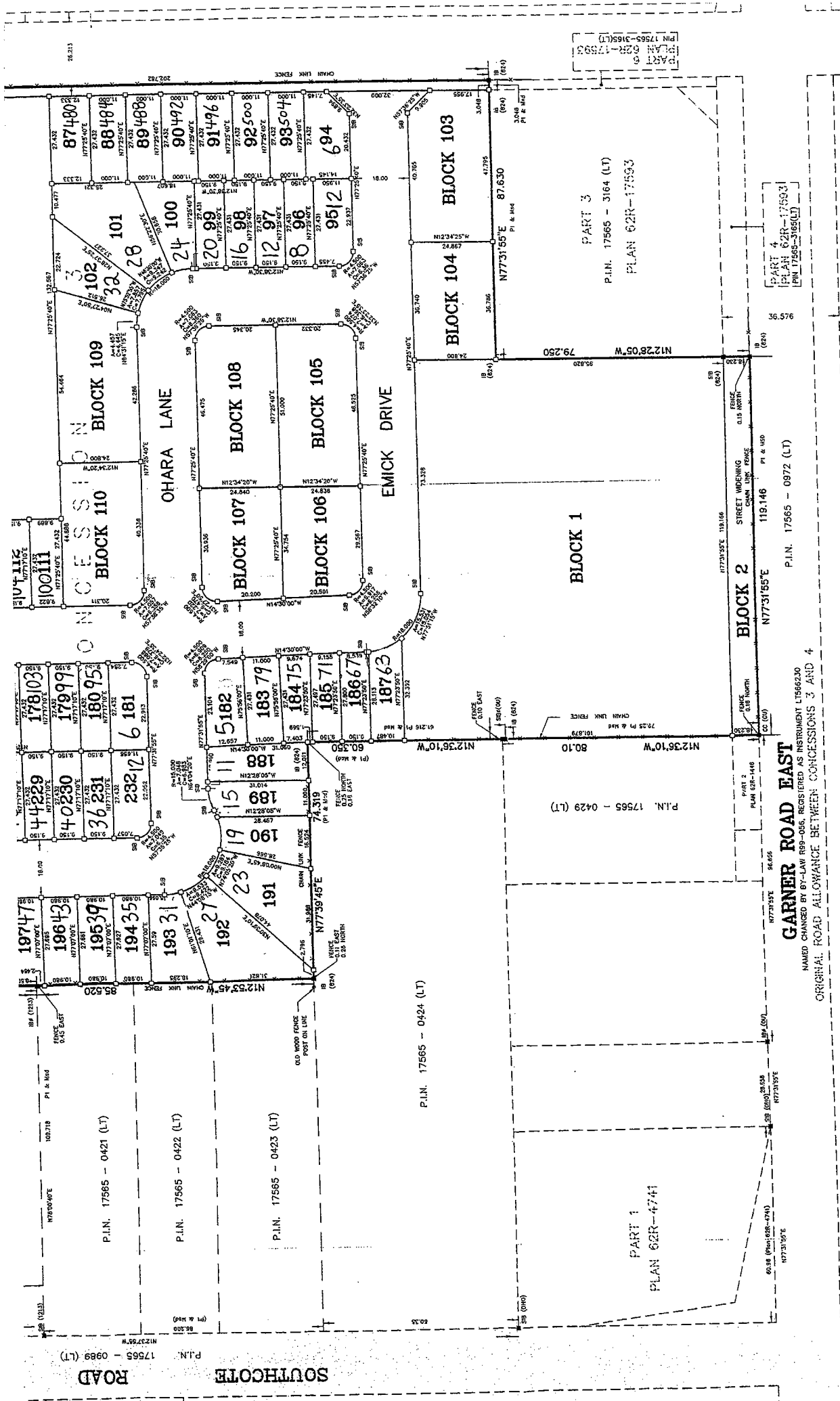
MOORLAND CRES  
PEERS DRIVE  
EMICK DRIVE  
SOUTH COTE ROAD

MOORLAND CRES  
PEERS DRIVE  
EMICK DRIVE  
SOUTH COTE ROAD

MOORLAND CRES  
PEERS DRIVE  
EMICK DRIVE  
SOUTH COTE ROAD

MOORLAND CRES  
PEERS DRIVE  
EMICK DRIVE  
SOUTH COTE ROAD

MOORLAND CRES  
PEERS DRIVE  
EMICK DRIVE  
SOUTH COTE ROAD



**BEARING NOTE:**  
BEARINGS ARE ASTROMOMIC AND ARE REFERRED TO THE NORTHERLY LIMIT OF PLAN 62R-17136 SHOWN THEREON AS BEING 181°54'00\" W.

**SURVEYOR'S CERTIFICATE**  
I CERTIFY THAT THE ABOVE ARE CORRECT AND IN ACCORDANCE WITH THE SURVEYING ACT AND THE LAND TILES ACT AND THE REGULATIONS THEREUNDER AND THE BEARING AND DISTANCE SHOWN ON THIS PLAN WAS COMPLETED ON THE 01<sup>ST</sup> DAY OF JULY, 2020.

JULY 5, 2020  
DATE

S.D. MCLELLAN O.L.S.  
SURVEYOR

**METRIC NOTE**  
DISTANCES SHOWN ON THIS PLAN ARE IN METRES AND CAN BE CONVERTED TO FEET BY DIVIDING BY 0.3048

**GARNER ROAD EAST**  
NAMED CHANGED BY 67-LAW 189-056, REGISTERED AS INSTRUMENT LT566230  
ORIGINAL ROAD ALLOWANCE BETWEEN CONCESSIONS 3 AND 4

**PART 1**  
PLAN 62R-4741

**PART 2**  
PLAN 62R-1416

**PART 3**  
P.I.N. 17565 - 3164 (LT)  
PLAN 62R-17593

**PART 4**  
P.I.N. 17565 - 3164 (LT)  
PLAN 62R-17593

**PART 5**  
P.I.N. 17565 - 0424 (LT)

**PART 6**  
P.I.N. 17565 - 0421 (LT)

**PART 7**  
P.I.N. 17565 - 0422 (LT)

**PART 8**  
P.I.N. 17565 - 0423 (LT)

**PART 9**  
P.I.N. 17565 - 0989 (LT)

**PART 10**  
P.I.N. 17565 - 0424 (LT)

**PART 11**  
P.I.N. 17565 - 0421 (LT)

**PART 12**  
P.I.N. 17565 - 0422 (LT)

**PART 13**  
P.I.N. 17565 - 0423 (LT)

**PART 14**  
P.I.N. 17565 - 0989 (LT)

**PART 15**  
P.I.N. 17565 - 0424 (LT)

**PART 16**  
P.I.N. 17565 - 0421 (LT)

**PART 17**  
P.I.N. 17565 - 0422 (LT)

**PART 18**  
P.I.N. 17565 - 0423 (LT)

**PART 19**  
P.I.N. 17565 - 0989 (LT)

**PART 20**  
P.I.N. 17565 - 0424 (LT)

**PART 21**  
P.I.N. 17565 - 0421 (LT)

**PART 22**  
P.I.N. 17565 - 0422 (LT)

**PART 23**  
P.I.N. 17565 - 0423 (LT)

**PART 24**  
P.I.N. 17565 - 0989 (LT)

**PART 25**  
P.I.N. 17565 - 0424 (LT)

**PART 26**  
P.I.N. 17565 - 0421 (LT)

**PART 27**  
P.I.N. 17565 - 0422 (LT)

**PART 28**  
P.I.N. 17565 - 0423 (LT)

**PART 29**  
P.I.N. 17565 - 0989 (LT)

**PART 30**  
P.I.N. 17565 - 0424 (LT)

**PART 31**  
P.I.N. 17565 - 0421 (LT)

**PART 32**  
P.I.N. 17565 - 0422 (LT)

**PART 33**  
P.I.N. 17565 - 0423 (LT)

**PART 34**  
P.I.N. 17565 - 0989 (LT)

**PART 35**  
P.I.N. 17565 - 0424 (LT)

**PART 36**  
P.I.N. 17565 - 0421 (LT)

**PART 37**  
P.I.N. 17565 - 0422 (LT)

**PART 38**  
P.I.N. 17565 - 0423 (LT)

**PART 39**  
P.I.N. 17565 - 0989 (LT)

**PART 40**  
P.I.N. 17565 - 0424 (LT)

**PART 41**  
P.I.N. 17565 - 0421 (LT)

**PART 42**  
P.I.N. 17565 - 0422 (LT)

**PART 43**  
P.I.N. 17565 - 0423 (LT)

**PART 44**  
P.I.N. 17565 - 0989 (LT)

**PART 45**  
P.I.N. 17565 - 0424 (LT)

**PART 46**  
P.I.N. 17565 - 0421 (LT)

**PART 47**  
P.I.N. 17565 - 0422 (LT)

**PART 48**  
P.I.N. 17565 - 0423 (LT)

**PART 49**  
P.I.N. 17565 - 0989 (LT)

**PART 50**  
P.I.N. 17565 - 0424 (LT)

**PART 51**  
P.I.N. 17565 - 0421 (LT)

**PART 52**  
P.I.N. 17565 - 0422 (LT)

**PART 53**  
P.I.N. 17565 - 0423 (LT)

**PART 54**  
P.I.N. 17565 - 0989 (LT)

**PART 55**  
P.I.N. 17565 - 0424 (LT)

**PART 56**  
P.I.N. 17565 - 0421 (LT)

**PART 57**  
P.I.N. 17565 - 0422 (LT)

**PART 58**  
P.I.N. 17565 - 0423 (LT)

**PART 59**  
P.I.N. 17565 - 0989 (LT)

**PART 60**  
P.I.N. 17565 - 0424 (LT)

**PART 61**  
P.I.N. 17565 - 0421 (LT)

**PART 62**  
P.I.N. 17565 - 0422 (LT)

**PART 63**  
P.I.N. 17565 - 0423 (LT)

**PART 64**  
P.I.N. 17565 - 0989 (LT)

**PART 65**  
P.I.N. 17565 - 0424 (LT)

**PART 66**  
P.I.N. 17565 - 0421 (LT)

**PART 67**  
P.I.N. 17565 - 0422 (LT)

**PART 68**  
P.I.N. 17565 - 0423 (LT)

**PART 69**  
P.I.N. 17565 - 0989 (LT)

**PART 70**  
P.I.N. 17565 - 0424 (LT)

**PART 71**  
P.I.N. 17565 - 0421 (LT)

**PART 72**  
P.I.N. 17565 - 0422 (LT)

**PART 73**  
P.I.N. 17565 - 0423 (LT)

**PART 74**  
P.I.N. 17565 - 0989 (LT)

**PART 75**  
P.I.N. 17565 - 0424 (LT)

**PART 76**  
P.I.N. 17565 - 0421 (LT)

**PART 77**  
P.I.N. 17565 - 0422 (LT)

**PART 78**  
P.I.N. 17565 - 0423 (LT)

**PART 79**  
P.I.N. 17565 - 0989 (LT)

**PART 80**  
P.I.N. 17565 - 0424 (LT)

**PART 81**  
P.I.N. 17565 - 0421 (LT)

**PART 82**  
P.I.N. 17565 - 0422 (LT)

**PART 83**  
P.I.N. 17565 - 0423 (LT)

**PART 84**  
P.I.N. 17565 - 0989 (LT)

**PART 85**  
P.I.N. 17565 - 0424 (LT)

**PART 86**  
P.I.N. 17565 - 0421 (LT)

**PART 87**  
P.I.N. 17565 - 0422 (LT)

**PART 88**  
P.I.N. 17565 - 0423 (LT)

**PART 89**  
P.I.N. 17565 - 0989 (LT)

**PART 90**  
P.I.N. 17565 - 0424 (LT)

**PART 91**  
P.I.N. 17565 - 0421 (LT)

**PART 92**  
P.I.N. 17565 - 0422 (LT)

**PART 93**  
P.I.N. 17565 - 0423 (LT)

**PART 94**  
P.I.N. 17565 - 0989 (LT)

**PART 95**  
P.I.N. 17565 - 0424 (LT)

**PART 96**  
P.I.N. 17565 - 0421 (LT)

**PART 97**  
P.I.N. 17565 - 0422 (LT)

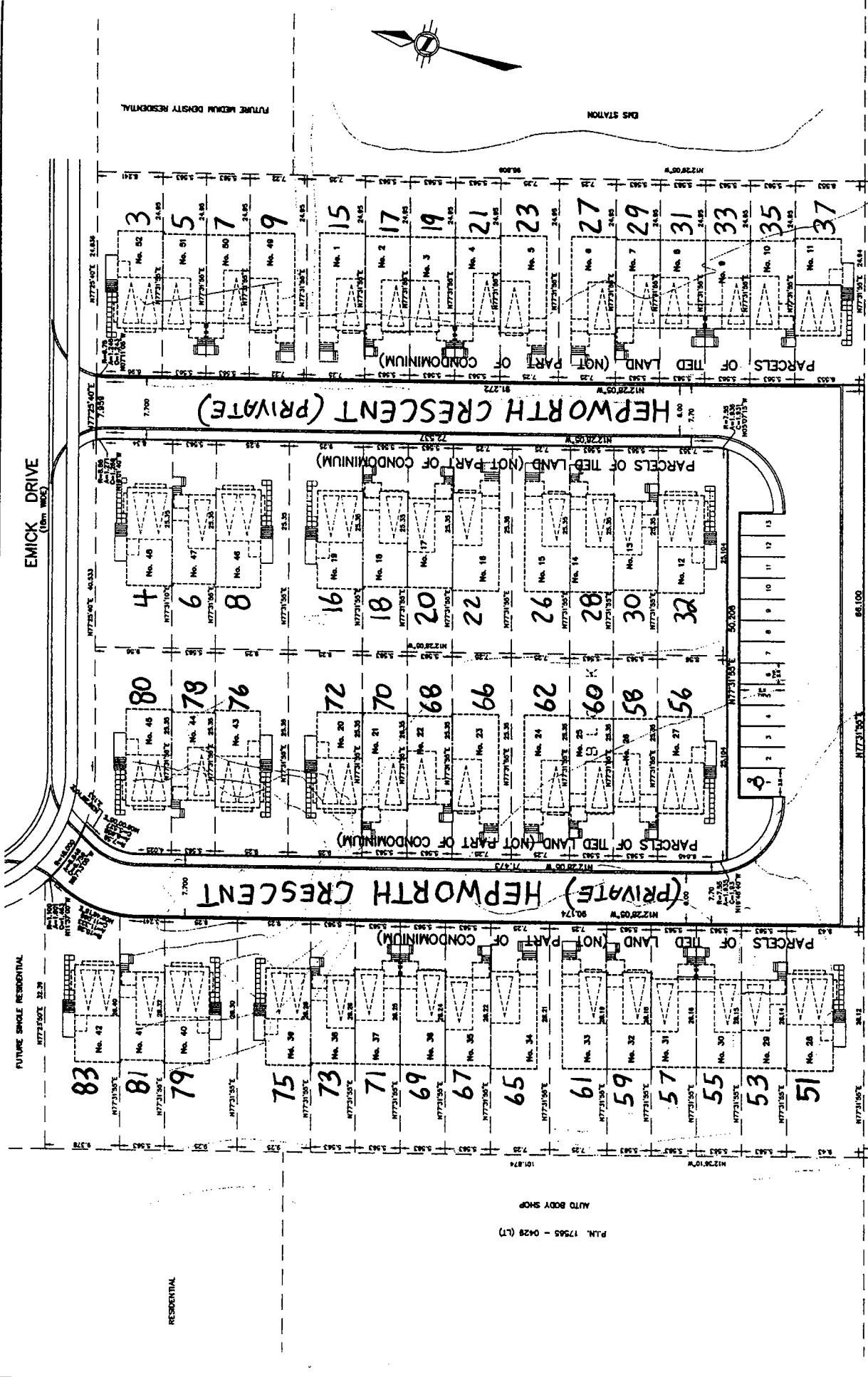
**PART 98**  
P.I.N. 17565 - 0423 (LT)

**PART 99**  
P.I.N. 17565 - 0989 (LT)

**PART 100**  
P.I.N. 17565 - 0424 (LT)



52 TOWNHOUSE UNITS  
BLOCK I - PRIVATE ROAD - HEPWORTH CRES.



EMICK DRIVE  
(10m wide)

HEPWORTH CRESCENT (PRIVATE)

HEPWORTH CRESCENT (PRIVATE)

PART 2  
PLAN 622-5446

PROPOSED WORKING  
BLOCK 2  
PLAN 622 M

GARNER ROAD EAST

NAMED CHANGED BY BY-LAW 899-056, REGISTERED AS INSTRUMENT LT566230  
ORIGINAL ROAD ALLOWANCE BETWEEN CONCESSIONS 3 AND 4

# BLOCK 121 (SCHOOL)

## BLOCKS 107, 108, 109, 110

112 250.82 250.50 250.72 250.82

111 PRIVATE RL CB (OPSD. 705.010) T/G. 250.35

BLOCK 110 (TOWNHOUSES) (NO BASEMENTS)

54 56 58 62 64 66

BLOCK 109 (TOWNHOUSES) (NO BASEMENTS)

42 44 46 48 50

### OHARA LANE

BLOCK 107 (TOWNHOUSES) (NO BASEMENTS)

57 59 61 63 65

BLOCK 108 (TOWNHOUSES) (NO BASEMENTS) A

41 43 45 47 49

BLOCK 106 (TOWNHOUSES) (NO BASEMENTS)

67 69 71 73 75

BLOCK 105 (TOWNHOUSES) (NO BASEMENTS) A

77 79 81 83 85

113 250.95 250.85 250.82

250.50 250.72 250.82 250.50

250.85 250.95 251.05 250.90 250.80 250.70

14.115 @ 0.00%

251.10 251.15 251.10 251.05

251.05 251.10 251.15 251.10 251.05

250.83 250.83 250.83

250.85 250.95 251.05 251.10 251.05

1.340% 8 @ 1.340%

1.316% 14.440 @ 1.316%

250.75 250.75 250.75

250.90 250.90 250.90

250.85 250.95 251.05 251.10 251.05

250.85 250.95 251.05 251.10 251.05

250.80 250.80 250.80

250.55 250.55 250.55

250.85 250.85 250.85

250.85 250.85 250.85

250.85 250.95 251.05 251.10 251.05

250.85 250.95 251.05 251.10 251.05

250.85 250.95 251.05 251.10 251.05

250.65 250.65 250.65

251.00 251.00 251.00

251.00 251.00 251.00

250.85 250.95 251.05 251.10 251.05

250.85 250.95 251.05 251.10 251.05

250.85 250.95 251.05 251.10 251.05

250.75 250.75 250.75

250.85 250.85 250.85

250.85 250.85 250.85

249.98 250.28 250.40

249.98 250.28 250.40

250.55 250.55 250.55

250.55 250.55 250.55

250.55 250.55 250.55

250.55 250.55 250.55

3 250.90 250.90 250.90

4 250.90 250.90 250.90

5 250.95 250.95 250.95

6 250.80 250.80 250.80

7 250.80 250.80 250.80

8 250.80 250.80 250.80

9 250.80 250.80 250.80

10 250.80 250.80 250.80

11 250.80 250.80 250.80

12 250.80 250.80 250.80

13 250.80 250.80 250.80

14 250.80 250.80 250.80

15 250.80 250.80 250.80

16 250.80 250.80 250.80

17 250.80 250.80 250.80

18 250.80 250.80 250.80

19 250.80 250.80 250.80

20 250.80 250.80 250.80

21 250.80 250.80 250.80

22 250.80 250.80 250.80

23 250.80 250.80 250.80

24 250.80 250.80 250.80

25 250.80 250.80 250.80

26 250.80 250.80 250.80

27 250.80 250.80 250.80

250.85 250.95 251.05 251.10 251.05

250.85 250.95 251.05 251.10 251.05

250.85 250.95 251.05 251.10 251.05

250.85 250.95 251.05 251.10 251.05

250.85 250.95 251.05 251.10 251.05

250.85 250.95 251.05 251.10 251.05

250.85 250.95 251.05 251.10 251.05

250.85 250.95 251.05 251.10 251.05

250.85 250.95 251.05 251.10 251.05

250.85 250.95 251.05 251.10 251.05

250.85 250.95 251.05 251.10 251.05

250.85 250.95 251.05 251.10 251.05

250.85 250.95 251.05 251.10 251.05

250.85 250.95 251.05 251.10 251.05

# BLOCKS 103, 104, 105, 106

REFER TO DWG. No. 15

OHARA LANE

# EMICK DRIVE

BLOCK 1  
(FUTURE TOWNHOUSES)

