



Mailing Address:
 City Centre, 77 James Street North, Suite 400
 Hamilton, ON L8R 2K3.
 www.hamilton.ca

Planning and Economic Development Department

Planning Division

Physical Address: City Centre, 77 James Street North, Suite 400

Phone: 905-546-2424 Ext.4348 Fax: 905-546-4202

ptoffole@hamilton.ca

Hamilton

April 27, 2010

FILE: 221-B
 25T- 200801

Black Sail SC Limited
 25 Sable Street
 Toronto, ON, M6M 3X8

Harris, Sheaffer
 c/o Stephen M. Karr
 4100 Yonge Street, Suite 310
 Toronto, ON, M2P 2B5

Speight, Van Nostrand & Gibson Limited
 750 Oakdale Road, Unit 66
 Toronto, ON, M3N 2Z4

Odan/Detech Group Inc.
 c/o John Krpan, P.Eng.
 5230 South Service Road
 Burlington, ON, L7L 5K2

NOTICE OF MUNICIPAL ADDRESSES

FOR REGISTERED PLAN 62M-1138 "HIGHGATE MEADOWS".

Attached is a table of the municipal addresses that have been assigned, along with a copy of the above Registered Plan for this subdivision located in the former City of Stoney Creek.

Please update your records accordingly. Should you have any questions regarding the above, please contact Paul Toffoletti at 905-546-2424 Ext.4348.

Michelle Sergi, MCIP, RPP
 Senior Project Manager, Legislative Approvals,
 Planning Division, Planning and Economic Development Department.

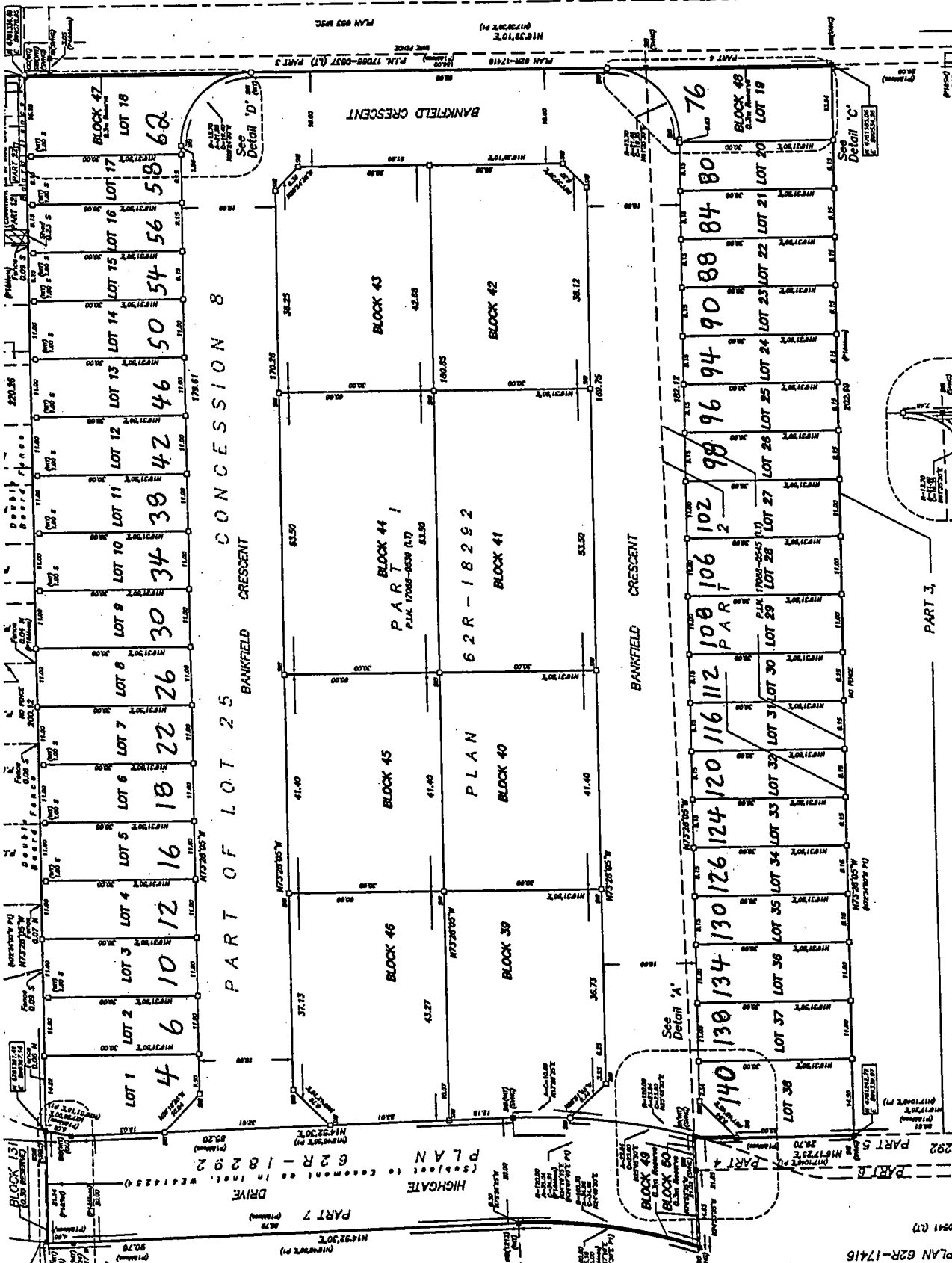
c.c.

Electrical Safety
 Authority
 Assessment
 Commissioner
 City of Hamilton
 Cogeco Cable
 Horizon Utilities
 Canada Post

Union Gas
 Fire and Police
 Bell Canada Eng.
 Bell Street Guide
 Bell Canada (911)
 Map Mobility

Ham.-Went. School Boards (Public &
 Separate)
 Canada Mortgage and Housing Corp.
 Hamilton CACC Ambulance Dispatch
 Hamilton-Burlington District Real Estate
 Canadian Cartographic Corp.
 Hamilton Automobile Club

Highgate	Meadows	25T-200801	
Block / Unit	Address		
Blk 44 – Unit 7	43 Bankfield Crescent		
Blk 44 – Unit 8	41 Bankfield Crescent		
Blk 44 – Unit 9	39 Bankfield Crescent		
Blk 44 – Unit 10	37 Bankfield Crescent		
Blk 44 – Unit 11	35 Bankfield Crescent		
Blk 44 – Unit 12	33 Bankfield Crescent		
Blk 44 – Unit 13	31 Bankfield Crescent		
Blk 44 – Unit 14	29 Bankfield Crescent		
Blk 45 – Unit 15	25 Bankfield Crescent		
Blk 45 – Unit 16	23 Bankfield Crescent		
Blk 45 – Unit 17	21 Bankfield Crescent		
Blk 45 – Unit 18	19 Bankfield Crescent		
Blk 45 – Unit 19	17 Bankfield Crescent		
Blk 45 – Unit 20	15 Bankfield Crescent		
Blk 46 – Unit 21	11 Bankfield Crescent		
Blk 46 – Unit 22	9 Bankfield Crescent		
Blk 46 – Unit 23	7 Bankfield Crescent		
Blk 46 – Unit 24	5 Bankfield Crescent		
Blk 46 – Unit 25	3 Bankfield Crescent		
Blk 46 – Unit 26	1 Bankfield Crescent		



UPPER CENTENNIAL PARKWAY
 (BY BY-LAW 8-88-008 REEL 170000)
 (ROAD ALLOWANCE BETWEEN LOTS 29 AND 31)
 PLAN 17378-0007 (17)

BANKFIELD CRESCENT
 PLAN 62R-17416
 (INTERVAL P)

BANKFIELD CRESCENT
 PLAN 62R-17416
 (INTERVAL P)

BANKFIELD CRESCENT
 PLAN 62R-17416
 (INTERVAL P)

BANKFIELD CRESCENT
 PLAN 62R-17416
 (INTERVAL P)

BANKFIELD CRESCENT
 PLAN 62R-17416
 (INTERVAL P)

BANKFIELD CRESCENT
 PLAN 62R-17416
 (INTERVAL P)

BANKFIELD CRESCENT
 PLAN 62R-17416
 (INTERVAL P)

BANKFIELD CRESCENT
 PLAN 62R-17416
 (INTERVAL P)

BANKFIELD CRESCENT
 PLAN 62R-17416
 (INTERVAL P)

BANKFIELD CRESCENT
 PLAN 62R-17416
 (INTERVAL P)

BANKFIELD CRESCENT
 PLAN 62R-17416
 (INTERVAL P)

BANKFIELD CRESCENT
 PLAN 62R-17416
 (INTERVAL P)

BANKFIELD CRESCENT
 PLAN 62R-17416
 (INTERVAL P)

BANKFIELD CRESCENT
 PLAN 62R-17416
 (INTERVAL P)

BANKFIELD CRESCENT
 PLAN 62R-17416
 (INTERVAL P)

BANKFIELD CRESCENT
 PLAN 62R-17416
 (INTERVAL P)

BANKFIELD CRESCENT
 PLAN 62R-17416
 (INTERVAL P)

BANKFIELD CRESCENT
 PLAN 62R-17416
 (INTERVAL P)

BANKFIELD CRESCENT
 PLAN 62R-17416
 (INTERVAL P)

BANKFIELD CRESCENT
 PLAN 62R-17416
 (INTERVAL P)

BANKFIELD CRESCENT
 PLAN 62R-17416
 (INTERVAL P)

BANKFIELD CRESCENT
 PLAN 62R-17416
 (INTERVAL P)

BANKFIELD CRESCENT
 PLAN 62R-17416
 (INTERVAL P)

BANKFIELD CRESCENT
 PLAN 62R-17416
 (INTERVAL P)

BANKFIELD CRESCENT
 PLAN 62R-17416
 (INTERVAL P)

BANKFIELD CRESCENT
 PLAN 62R-17416
 (INTERVAL P)

BANKFIELD CRESCENT
 PLAN 62R-17416
 (INTERVAL P)

BANKFIELD CRESCENT
 PLAN 62R-17416
 (INTERVAL P)

BANKFIELD CRESCENT
 PLAN 62R-17416
 (INTERVAL P)

BANKFIELD CRESCENT
 PLAN 62R-17416
 (INTERVAL P)

BANKFIELD CRESCENT
 PLAN 62R-17416
 (INTERVAL P)

BANKFIELD CRESCENT
 PLAN 62R-17416
 (INTERVAL P)

BANKFIELD CRESCENT
 PLAN 62R-17416
 (INTERVAL P)

BANKFIELD CRESCENT
 PLAN 62R-17416
 (INTERVAL P)

BANKFIELD CRESCENT
 PLAN 62R-17416
 (INTERVAL P)

BANKFIELD CRESCENT
 PLAN 62R-17416
 (INTERVAL P)

BANKFIELD CRESCENT
 PLAN 62R-17416
 (INTERVAL P)

BANKFIELD CRESCENT
 PLAN 62R-17416
 (INTERVAL P)

BANKFIELD CRESCENT
 PLAN 62R-17416
 (INTERVAL P)

BANKFIELD CRESCENT
 PLAN 62R-17416
 (INTERVAL P)

HIGHBATE DRIVE
 PLAN 62R-18292
 (SUBJECT TO EASEMENT AS IN INSTR. 1741222)

HIGHBATE DRIVE
 PLAN 62R-18292
 (SUBJECT TO EASEMENT AS IN INSTR. 1741222)

HIGHBATE DRIVE
 PLAN 62R-18292
 (SUBJECT TO EASEMENT AS IN INSTR. 1741222)

HIGHBATE DRIVE
 PLAN 62R-18292
 (SUBJECT TO EASEMENT AS IN INSTR. 1741222)

THE
 GEN
 CIT

THIS PLAN
 SUBJECT TO
 AS IN INSTR
 PLAN C

PART
 CONC
 (GEOG
 CIT

SCALE

SPEIG
 ONTARIO

GEODI
 REGIONS
 HORIZONTAL
 01198431
 00000000
 AND ARE

LEGEL

OWNI
 THIS IS
 1) LOTS
 THE
 AND
 HAVE

2) THE
 AS F
 DATED
 BLACK

SUR
 1. 21

1. 21

1. 21

1. 21

1. 21

1. 21

1. 21

1. 21

1. 21

1. 21

1. 21

1. 21

1. 21

1. 21

1. 21

1. 21

1. 21

1. 21

1. 21

1. 21

1. 21

1. 21

1. 21

1. 21

1. 21

1. 21

1. 21

1. 21

1. 21

1. 21

1. 21

1. 21

1. 21

1. 21

1. 21

