



Mailing Address:  
 Hamilton City Hall  
 71 Main Street West, 5<sup>th</sup> Floor  
 Hamilton, ON L8P 4Y5  
 www.hamilton.ca

Planning and Economic Development Department  
 Growth Management Division  
 Physical Address: 71 Main Street West, 5<sup>th</sup> Floor  
 Phone: 905-546-2424 Ext.4348 Fax: 905-546-4202  
 ptoffole@hamilton.ca

Hamilton

October 11, 2011

FILE: 221-E, 221-N 221-R  
 25T-200526

Losani Homes  
 430 McNeilly Road  
 Stoney Creek, ON L8E 5E3

A.T. McLaren Ltd.  
 69 John Street South, Suite 230  
 Hamilton, ON, L8N 2B9

**NOTICE OF MUNICIPAL ADDRESSES**

**FOR REGISTERED PLAN 62M-1164 "RIDGEVIEW".**

Attached is a table of the municipal addresses that have been assigned, along with a copy of the above Registered Plan for this subdivision located in the former City of Stoney Creek.

Please note that Blocks 74 to 84 are for the construction of Street Townhouses.

**NOTE: BUILDERS ARE REMINDED OF THEIR OBLIGATION TO INSTALL ADDRESS NUMBERS ON ALL NEW DWELLINGS.**

Please update your records accordingly. Should you have any questions regarding the above, please contact Paul Toffoletti at 905-546-2424 Ext.4348.

Jason Thompson, MCIP, RPP  
 Senior Project Manager, Growth Planning,  
 Growth Management Division, Planning and Economic Development Department.

c.c.

Electrical Safety Authority  
 MPAC  
 City of Hamilton  
 Cogeco Cable  
 Horizon Utilities  
 Canada Post

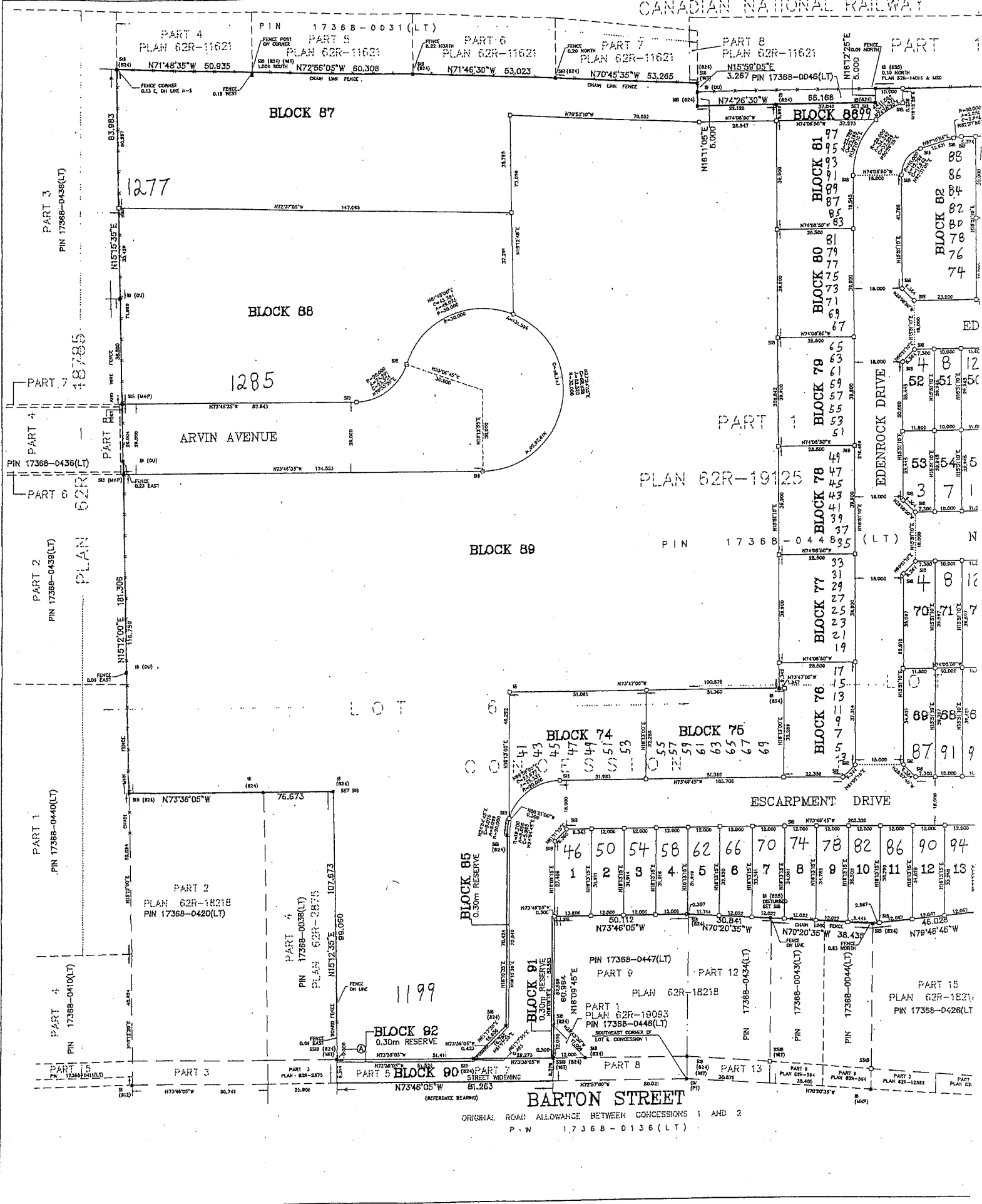
Union Gas  
 Fire and Police  
 Bell Canada Eng.  
 Bell Street Guide  
 Bell Canada (911)  
 Map Mobility

Ham.-Went. School Boards (Public & Separate)  
 Canada Mortgage and Housing Corp.  
 Hamilton CACC Ambulance Dispatch  
 Hamilton-Burlington District Real Estate  
 Canadian Cartographic Corp.  
 Hamilton Automobile Club

62M-1164		RIDGEVIEW	
Lot No.	Address	Lot No.	Address
1	46 ESCARPMENT DRIVE	59	27 NORBROOK DRIVE
2	50 ESCARPMENT DRIVE	60	143 ESCARPMENT DRIVE
3	54 ESCARPMENT DRIVE	61	139 ESCARPMENT DRIVE
4	58 ESCARPMENT DRIVE	62	135 ESCARPMENT DRIVE
5	62 ESCARPMENT DRIVE	63	131 ESCARPMENT DRIVE
6	66 ESCARPMENT DRIVE	64	127 ESCARPMENT DRIVE
7	70 ESCARPMENT DRIVE	65	123 ESCARPMENT DRIVE
8	74 ESCARPMENT DRIVE	66	99 ESCARPMENT DRIVE
9	78 ESCARPMENT DRIVE	67	95 ESCARPMENT DRIVE
10	82 ESCARPMENT DRIVE	68	91 ESCARPMENT DRIVE
11	86 ESCARPMENT DRIVE	69	87 ESCARPMENT DRIVE
12	90 ESCARPMENT DRIVE	70	4 NORBROOK DRIVE
13	94 ESCARPMENT DRIVE	71	8 NORBROOK DRIVE
14	98 ESCARPMENT DRIVE	72	12 NORBROOK DRIVE
15	102 ESCARPMENT DRIVE	73	16 NORBROOK DRIVE
16	106 ESCARPMENT DRIVE		
17	110 ESCARPMENT DRIVE	Block 74	41 ESCARPMENT DRIVE
18	114 ESCARPMENT DRIVE	Block 74	43 ESCARPMENT DRIVE
19	118 ESCARPMENT DRIVE	Block 74	45 ESCARPMENT DRIVE
20	122 ESCARPMENT DRIVE	Block 74	47 ESCARPMENT DRIVE
21	126 ESCARPMENT DRIVE	Block 74	49 ESCARPMENT DRIVE
22	130 ESCARPMENT DRIVE	Block 74	51 ESCARPMENT DRIVE
23	134 ESCARPMENT DRIVE	Block 74	53 ESCARPMENT DRIVE
24	138 ESCARPMENT DRIVE		
25	142 ESCARPMENT DRIVE	Block 75	55 ESCARPMENT DRIVE
26	146 ESCARPMENT DRIVE	Block 75	57 ESCARPMENT DRIVE
27	150 ESCARPMENT DRIVE	Block 75	59 ESCARPMENT DRIVE
28	154 ESCARPMENT DRIVE	Block 75	61 ESCARPMENT DRIVE
29	158 ESCARPMENT DRIVE	Block 75	63 ESCARPMENT DRIVE
30	162 ESCARPMENT DRIVE	Block 75	65 ESCARPMENT DRIVE
31	166 ESCARPMENT DRIVE	Block 75	67 ESCARPMENT DRIVE
32	170 ESCARPMENT DRIVE	Block 75	69 ESCARPMENT DRIVE
33	174 ESCARPMENT DRIVE		
34	43 WEST AVENUE	Block 76	3 EDENROCK DRIVE
35	178 ESCARPMENT DRIVE	Block 76	5 EDENROCK DRIVE
36	127 EDENROCK DRIVE	Block 76	7 EDENROCK DRIVE
37	123 EDENROCK DRIVE	Block 76	9 EDENROCK DRIVE
38	119 EDENROCK DRIVE	Block 76	11 EDENROCK DRIVE
39	115 EDENROCK DRIVE	Block 76	13 EDENROCK DRIVE
40	111 EDENROCK DRIVE	Block 76	15 EDENROCK DRIVE
41	15 EDGEVIEW DRIVE	Block 76	17 EDENROCK DRIVE
42	19 EDGEVIEW DRIVE		
43	23 EDGEVIEW DRIVE	Block 77	19 EDENROCK DRIVE
44	27 EDGEVIEW DRIVE	Block 77	21 EDENROCK DRIVE
45	31 EDGEVIEW DRIVE	Block 77	23 EDENROCK DRIVE
46	28 EDGEVIEW DRIVE	Block 77	25 EDENROCK DRIVE
47	24 EDGEVIEW DRIVE	Block 77	27 EDENROCK DRIVE
48	20 EDGEVIEW DRIVE	Block 77	29 EDENROCK DRIVE
49	16 EDGEVIEW DRIVE	Block 77	31 EDENROCK DRIVE
50	12 EDGEVIEW DRIVE	Block 77	33 EDENROCK DRIVE
51	8 EDGEVIEW DRIVE		
52	4 EDGEVIEW DRIVE	Block 78	35 EDENROCK DRIVE
53	3 NORBROOK DRIVE	Block 78	37 EDENROCK DRIVE
54	7 NORBROOK DRIVE	Block 78	39 EDENROCK DRIVE
55	11 NORBROOK DRIVE	Block 78	41 EDENROCK DRIVE
56	15 NORBROOK DRIVE	Block 78	43 EDENROCK DRIVE
57	19 NORBROOK DRIVE	Block 78	45 EDENROCK DRIVE
58	23 NORBROOK DRIVE	Block 78	47 EDENROCK DRIVE
		Block 78	49 EDENROCK DRIVE







PART 4  
PLAN 62R-11621  
N71°46'35"W 50.835

PIN 17368-0031(LT)  
PART 5  
PLAN 62R-11621  
N72°56'05"W 60.308

PART 6  
PLAN 62R-11621  
N71°46'30"W 53.023

PART 7  
PLAN 62R-11621  
N70°45'35"W 53.265

PART 8  
PLAN 62R-11621  
N16°59'05"E  
3.267 PIN 17368-0046(LT)

PART 1

BLOCK 87

BLOCK 86

BLOCK 88

BLOCK 81

BLOCK 80

BLOCK 79

BLOCK 78

BLOCK 77

BLOCK 76

BLOCK 75

BLOCK 74

BLOCK 73

BLOCK 72

BLOCK 71

BLOCK 70

BLOCK 69

BLOCK 68

BLOCK 67

BLOCK 66

BLOCK 65

BLOCK 64

BLOCK 63

BLOCK 62

BLOCK 61

BLOCK 60

BLOCK 59

BLOCK 58

BLOCK 57

BLOCK 56

BLOCK 55

BLOCK 54

BLOCK 53

BLOCK 52

BLOCK 51

BLOCK 50

BLOCK 49

BLOCK 48

BLOCK 47

BLOCK 46

BLOCK 45

BLOCK 44

BLOCK 43

BLOCK 42

BLOCK 41

BLOCK 40

BLOCK 39

BLOCK 38

BLOCK 37

BLOCK 36

BLOCK 35

BLOCK 34

BLOCK 33

BLOCK 32

BLOCK 31

BLOCK 30

BLOCK 29

BLOCK 28

BLOCK 27

BLOCK 26

BLOCK 25

BLOCK 24

BLOCK 23

BLOCK 22

BLOCK 21

BLOCK 20

BLOCK 19

BLOCK 18

BLOCK 17

BLOCK 16

BLOCK 15

BLOCK 14

BLOCK 13

BLOCK 12

BLOCK 11

BLOCK 10

BLOCK 9

BLOCK 8

BLOCK 7

BLOCK 6

BLOCK 5

BLOCK 4

BLOCK 3

BLOCK 2

BLOCK 1

ARVIN AVENUE

ESCARPMENT DRIVE

BARTON STREET

ORIGINAL ROAD ALLOWANCE BETWEEN CONCESSIONS 1 AND 2  
P.N. 17368-0136(LT)

1277

1285

LOT

1199

ED

N

0

1

2

3

4

5

6

7

8

9

10

11

12

13

14

15

16

17

18

19

20

21

22

23

24

25

26

27

28

29

30

31

32

33

34

35

36

37

38

39

40

41

42

43

44

45

46

47

48

49

50

51

52

53

54

55

56

57

58

59

60

61

62

63

64

65

66

67

68

69

70

71

72

73

74

75

76

77

78

79

80

81

82

83

84

85

86

87

88

89

90

91

92

93

94

95

96

97

98

99

100

101

102

103

104

105

106

107

108

109

110

111

112

113

114

115

116

117

118

119

120

121

122

123

124

125

126

127

128

129

130

131

132

133

134

135

136

137

138

139

140

141

142

143

144

145

146

147

148

149

150

151

152

153

154

155

156

157

158

159

160

161

162

163

164

165

166

167

168

169

170

171

172

173

174

175

176

177

178

179

180

181

182

183

184

185

186

187

188

189

190

191

192

193

194

195

196

197

198

199

200

201

202

203

204

205

206

207

208