



Mailing Address:  
 Hamilton City Hall  
 71 Main Street West, 5<sup>th</sup> Floor  
 Hamilton, ON L8P 4Y5  
 www.hamilton.ca

Planning and Economic Development Department  
 Growth Management Division

Physical Address: 71 Main Street West, 5<sup>th</sup> Floor  
 Phone: 905-546-2424 Ext.4348 Fax: 905-546-4202  
 ptoffole@hamilton.ca

# Hamilton

February 16, 2012

FILE: 221-C, 221-G, 221-P  
 25T-200018; DA-11-126

DiCenzo Construction Ltd.  
 205 Quigley Road, Unit 2  
 Hamilton, ON, L8K 5MB

DiCenzo & Associates  
 1070 Stone Church Road East  
 Hamilton, ON, L8W 3K8

A. J. Clarke Ltd.  
 c/o Steve Fraser  
 25 Main Street West Suite 300  
 Hamilton, ON L8P 1H1

**NOTICE OF MUNICIPAL ADDRESSES  
 FOR REGISTERED PLAN 62M-1170 "TRILLIUM GARDENS PHASE 2".**

Attached is a table of the municipal addresses that have been assigned, along with a copy of the above Registered Plan and related site plan for this subdivision located in the former City of Stoney Creek. Please note that Padua Crescent is a private road.

**NOTE: BUILDERS ARE REMINDED OF THEIR OBLIGATION TO INSTALL  
 ADDRESS NUMBERS ON ALL NEW DWELLINGS.**

Please update your records accordingly. Should you have any questions regarding the above, please contact Paul Toffoletti at 905-546-2424 Ext.4348.

Jason Thompson, MCIP, RPP  
 Senior Project Manager, Growth Planning Section,  
 Growth Management Division, Planning and Economic Development Department.

c.c.

Electrical Safety  
 Authority  
 MPAC  
 City of Hamilton  
 Cogeco Cable  
 Horizon Utilities  
 Canada Post

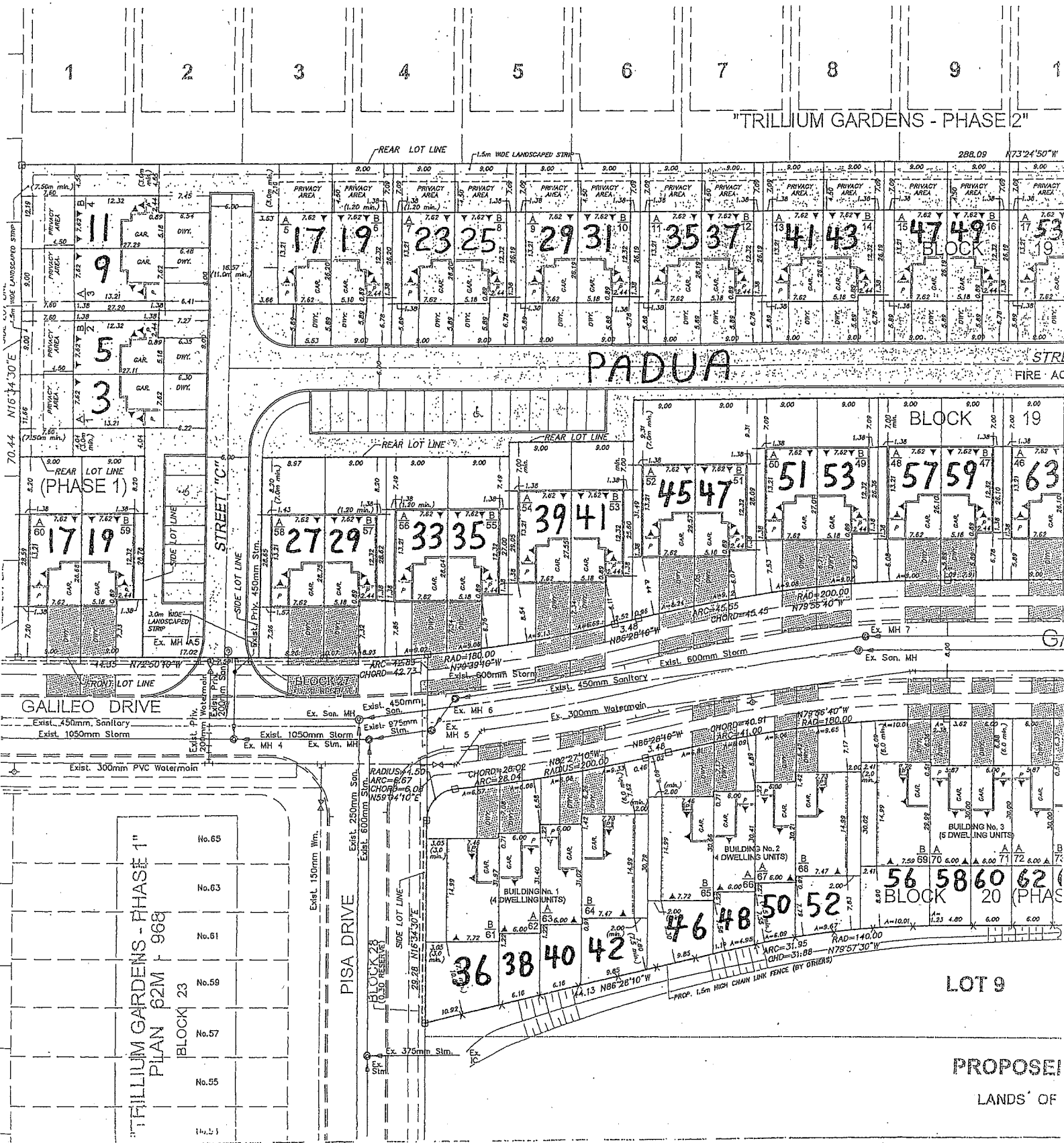
Union Gas  
 Fire and Police  
 Bell Canada Eng.  
 Bell Street Guide  
 Bell Canada (911)  
 Map Mobility

Ham.-Went. School Boards (Public &  
 Separate)  
 Canada Mortgage and Housing Corp.  
 Hamilton CACC Ambulance Dispatch  
 Hamilton-Burlington District Real Estate  
 Canadian Cartographic Corp.  
 Hamilton Automobile Club

LOTS	Address		LOTS	Address
LOT 1	9 COPES LANE		UNIT 39-BLOCK 19	83 GALILEO DRIVE
LOT 2	15 COPES LANE		UNIT 40-BLOCK 19	81 GALILEO DRIVE
LOT 3	21 COPES LANE		UNIT 41-BLOCK 19	77 GALILEO DRIVE
LOT 4	27 COPES LANE		UNIT 42-BLOCK 19	75 GALILEO DRIVE
LOT 5	33 COPES LANE		UNIT 43-BLOCK 19	71 GALILEO DRIVE
LOT 6	39 COPES LANE		UNIT 44-BLOCK 19	69 GALILEO DRIVE
LOT 7	45 COPES LANE		UNIT 45-BLOCK 19	65 GALILEO DRIVE
LOT 8	51 COPES LANE		UNIT 46-BLOCK 19	63 GALILEO DRIVE
LOT 9	55 COPES LANE		UNIT 47-BLOCK 19	59 GALILEO DRIVE
LOT 10	61 COPES LANE		UNIT 48-BLOCK 19	57 GALILEO DRIVE
LOT 11	67 COPES LANE		UNIT 49-BLOCK 19	53 GALILEO DRIVE
LOT 12	73 COPES LANE		UNIT 50-BLOCK 19	51 GALILEO DRIVE
LOT 13	77 COPES LANE		UNIT 51-BLOCK 19	47 GALILEO DRIVE
LOT 14	81 COPES LANE		UNIT 52-BLOCK 19	45 GALILEO DRIVE
LOT 15	87 COPES LANE		UNIT 53-BLOCK 19	41 GALILEO DRIVE
LOT 16	93 COPES LANE		UNIT 54-BLOCK 19	39 GALILEO DRIVE
LOT 17	97 COPES LANE		UNIT 55-BLOCK 19	35 GALILEO DRIVE
LOT 18	101 COPES LANE		UNIT 56-BLOCK 19	33 GALILEO DRIVE
			UNIT 57-BLOCK 19	29 GALILEO DRIVE
UNIT 1-BLOCK 19	3 PADUA CRESCENT		UNIT 58-BLOCK 19	27 GALILEO DRIVE
UNIT 2-BLOCK 19	5 PADUA CRESCENT		UNIT 59-BLOCK 19	19 GALILEO DRIVE
UNIT 3-BLOCK 19	9 PADUA CRESCENT		UNIT 60-BLOCK 19	17 GALILEO DRIVE
UNIT 4-BLOCK 19	11 PADUA CRESCENT		UNIT 61 -BLOCK 20	36 GALILEO DRIVE
UNIT 5-BLOCK 19	17 PADUA CRESCENT		UNIT 62-BLOCK 20	38 GALILEO DRIVE
UNIT 6-BLOCK 19	19 PADUA CRESCENT		UNIT 63 -BLOCK 20	40 GALILEO DRIVE
UNIT 7-BLOCK 19	23 PADUA CRESCENT		UNIT 64 -BLOCK 20	42 GALILEO DRIVE
UNIT 8-BLOCK 19	25 PADUA CRESCENT		UNIT 65 -BLOCK 20	46 GALILEO DRIVE
UNIT 9-BLOCK 19	29 PADUA CRESCENT		UNIT 66 -BLOCK 20	48 GALILEO DRIVE
UNIT 10-BLOCK 19	31 PADUA CRESCENT		UNIT 67 -BLOCK 20	50 GALILEO DRIVE
UNIT 11-BLOCK 19	35 PADUA CRESCENT		UNIT 68 -BLOCK 20	52 GALILEO DRIVE
UNIT 12-BLOCK 19	37 PADUA CRESCENT		UNIT 69 -BLOCK 20	56 GALILEO DRIVE
UNIT 13-BLOCK 19	41 PADUA CRESCENT		UNIT 70 -BLOCK 20	58 GALILEO DRIVE
UNIT 14-BLOCK 19	43 PADUA CRESCENT		UNIT 71 -BLOCK 20	60 GALILEO DRIVE
UNIT 15-BLOCK 19	47 PADUA CRESCENT		UNIT 72 -BLOCK 20	62 GALILEO DRIVE
UNIT 16-BLOCK 19	49 PADUA CRESCENT		UNIT 73 -BLOCK 20	64 GALILEO DRIVE
UNIT 17-BLOCK 19	53 PADUA CRESCENT		UNIT 74 -BLOCK 20	70 GALILEO DRIVE
UNIT 18-BLOCK 19	55 PADUA CRESCENT		UNIT 75 -BLOCK 20	72 GALILEO DRIVE
UNIT 19-BLOCK 19	59 PADUA CRESCENT		UNIT 76 -BLOCK 20	74 GALILEO DRIVE
UNIT 20-BLOCK 19	61 PADUA CRESCENT		UNIT 77 -BLOCK 20	76 GALILEO DRIVE
UNIT 21-BLOCK 19	65 PADUA CRESCENT		UNIT 78 -BLOCK 20	78 GALILEO DRIVE
UNIT 22-BLOCK 19	67 PADUA CRESCENT		UNIT 79 -BLOCK 20	80 GALILEO DRIVE
UNIT 23-BLOCK 19	71 PADUA CRESCENT		UNIT 80 -BLOCK 20	84 GALILEO DRIVE
UNIT 24-BLOCK 19	73 PADUA CRESCENT		UNIT 81 -BLOCK 20	86 GALILEO DRIVE
UNIT 25-BLOCK 19-	77 PADUA CRESCENT		UNIT 82 -BLOCK 20	88 GALILEO DRIVE
UNIT 26-BLOCK 19	79 PADUA CRESCENT		UNIT 83 -BLOCK 20	90 GALILEO DRIVE
UNIT 27-BLOCK 19	83 PADUA CRESCENT		UNIT 84 -BLOCK 20	92 GALILEO DRIVE
UNIT 28-BLOCK 19	85 PADUA CRESCENT		UNIT 85 -BLOCK 20	94 GALILEO DRIVE
UNIT 29-BLOCK 19	89 PADUA CRESCENT		UNIT 86 -BLOCK 20	98 GALILEO DRIVE
UNIT 30-BLOCK 19	91 PADUA CRESCENT		UNIT 87 -BLOCK 20	100 GALILEO DRIVE
UNIT 31-BLOCK 19	95 PADUA CRESCENT		UNIT 88 -BLOCK 20	102 GALILEO DRIVE
UNIT 32-BLOCK 19	97 PADUA CRESCENT		UNIT 89 -BLOCK 20	104 GALILEO DRIVE
UNIT 33-BLOCK 19	101 PADUA CRESCENT		UNIT 90 -BLOCK 20	106 GALILEO DRIVE
UNIT 34-BLOCK 19	103 PADUA CRESCENT		Common Element	107 PADUA CRESCENT
UNIT 35-BLOCK 19	95 GALILEO DRIVE			
UNIT 36-BLOCK 19	93 GALILEO DRIVE			
UNIT 37-BLOCK 19	89 GALILEO DRIVE			
UNIT 38-BLOCK 19	87 GALILEO DRIVE			



"TRILLIUM GARDENS - PHASE 2"



1  
2  
3  
4  
5  
6  
7  
8  
9  
10

11  
9  
5  
3

17  
19  
17  
19  
51  
53  
59  
63

27  
29  
33  
35  
39  
41  
45  
47  
51  
53  
59  
63

36  
38  
40  
42  
46  
48  
50  
52  
56  
58  
60  
62  
64  
66  
68  
70  
72  
74  
76  
78  
80  
82  
84  
86  
88  
90  
92  
94  
96  
98  
100  
102  
104  
106  
108  
110  
112  
114  
116  
118  
120  
122  
124  
126  
128  
130  
132  
134  
136  
138  
140  
142  
144  
146  
148  
150  
152  
154  
156  
158  
160  
162  
164  
166  
168  
170  
172  
174  
176  
178  
180  
182  
184  
186  
188  
190  
192  
194  
196  
198  
200

TRILLIUM GARDENS - PHASE 1  
PLAN 62M - 968  
BLOCK 23

LOT 9  
PROPOSED  
LANDS OF

1  
2  
3  
4  
5  
6  
7  
8  
9  
10  
11  
12  
13  
14  
15  
16  
17  
18  
19  
20  
21  
22  
23  
24  
25  
26  
27  
28  
29  
30  
31  
32  
33  
34  
35  
36  
37  
38  
39  
40  
41  
42  
43  
44  
45  
46  
47  
48  
49  
50  
51  
52  
53  
54  
55  
56  
57  
58  
59  
60  
61  
62  
63  
64  
65  
66  
67  
68  
69  
70  
71  
72  
73  
74  
75  
76  
77  
78  
79  
80  
81  
82  
83  
84  
85  
86  
87  
88  
89  
90  
91  
92  
93  
94  
95  
96  
97  
98  
99  
100



