

Mailing Address:
 City Centre, 77 James Street North, Suite 400
 Hamilton, ON L8R 2K3.
 www.hamilton.ca

Planning and Economic Development Department

Planning Division

Physical Address: City Centre, 77 James Street North, Suite 400

Phone: 905-546-2424 Ext.4348 Fax: 905-546-4202

ptoffole@hamilton.ca

Hamilton

June 19, 2012

FILE: 221-C
 25T-200719

Anthony DiSilvestro
 c/o 1649404 Ontario Inc.
 161 Rebecca Street
 Hamilton, ON L8R 1B9

Urbex Engineering Ltd
 c/o Angelo Cameracci
 161 Rebecca Street
 Hamilton, ON L8R 1B9

A.T. McLaren Ltd.
 69 John Street South, Suite 230
 Hamilton, ON, L8N 2B9

**NOTICE OF MUNICIPAL ADDRESSES
 FOR REGISTERED PLAN 62M-1177 "ADAM ESTATES – PHASE 2".**

Attached is a table of the municipal addresses that have been assigned, along with a copy of the above Registered Plan for this subdivision located in the former City of Hamilton.

Please update your records accordingly. Should you have any questions regarding the above, please contact Paul Toffoletti at 905-546-2424 Ext.4348.



Jason Thompson, MCIP, RPP
 Senior Project Manager, Growth Planning Section,
 Growth Management Division, Planning and Economic Development Department.

c.c.

Electrical Safety Authority
 MPAC
 City of Hamilton
 Shaw Cable
 Horizon Utilities
 Canada Post

Union Gas
 Fire and Police
 Bell Canada Eng.
 Bell Street Guide
 Bell Canada (911)
 Map Mobility

Ham.-Went. School Boards
 (Public & Separate)
 Canada Mortgage and Housing Corp.
 Hamilton CACC Ambulance Dispatch
 Hamilton-Burlington District Real Estate
 Canadian Cartographic Corp.
 Hamilton Automobile Club

Adam Estates Ph 2	
Lot Number	Address
1	4 CHARTWELL CIRCLE
2	8 CHARTWELL CIRCLE
3	12 CHARTWELL CIRCLE
4	16 CHARTWELL CIRCLE
5	20 CHARTWELL CIRCLE
6	24 CHARTWELL CIRCLE
7	28 CHARTWELL CIRCLE
8	32 CHARTWELL CIRCLE
9	36 CHARTWELL CIRCLE
10	40 CHARTWELL CIRCLE
11	44 CHARTWELL CIRCLE
12	251 CHARTWELL CIRCLE
13	247 CHARTWELL CIRCLE
14	243 CHARTWELL CIRCLE
15	239 CHARTWELL CIRCLE
16	235 CHARTWELL CIRCLE
17	231 CHARTWELL CIRCLE
18	227 CHARTWELL CIRCLE
19	223 CHARTWELL CIRCLE
20	219 CHARTWELL CIRCLE
21	215 CHARTWELL CIRCLE
22	211 CHARTWELL CIRCLE
23	207 CHARTWELL CIRCLE
24	200 CHARTWELL CIRCLE
25	204 CHARTWELL CIRCLE
26	208 CHARTWELL CIRCLE
27	212 CHARTWELL CIRCLE
28	216 CHARTWELL CIRCLE
29	220 CHARTWELL CIRCLE
30	224 CHARTWELL CIRCLE
31	228 CHARTWELL CIRCLE
32	232 CHARTWELL CIRCLE
33	236 CHARTWELL CIRCLE
34	240 CHARTWELL CIRCLE
35	244 CHARTWELL CIRCLE
36	248 CHARTWELL CIRCLE
37	252 CHARTWELL CIRCLE
38	48 PINEMEADOW DRIVE

PLAN OF SUBDIVISION
OF PART OF
LOT 14
CONCESSION 7
GEOGRAPHIC
TOWNSHIP OF BARTON
IN THE
CITY OF HAMILTON
SCALE: 1:500 METRIC

ADAM ESTATES PHASE 2

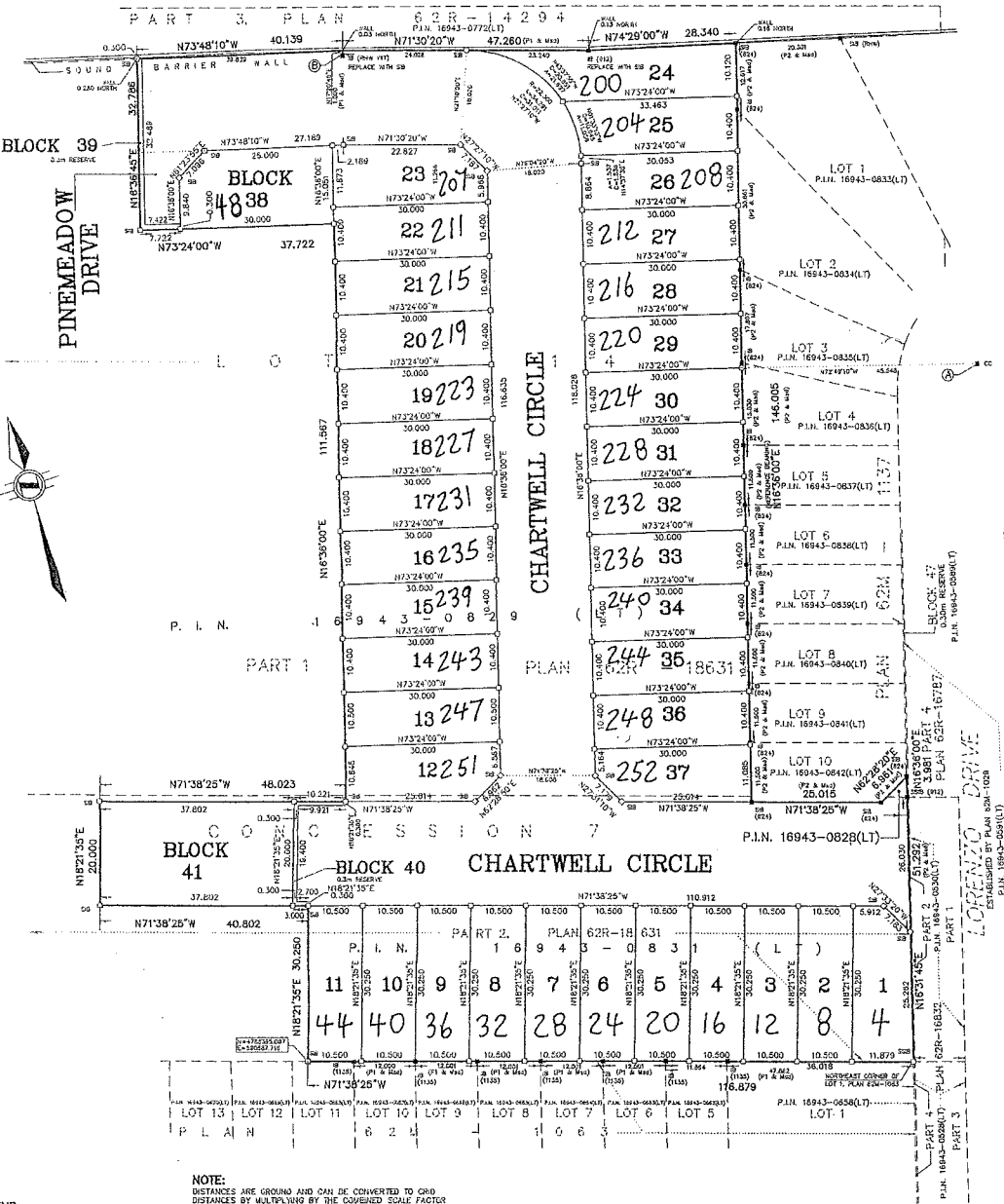
62M-1177

ASSOCIATION OF ONTARIO
LAND SURVEYORS
PLAN SUBDIVISION FORM
1835411

PLAN 62M-1177
I CERTIFY THAT THIS PLAN 62M-1177 IS REGISTERED IN THE LAND REGISTRY OFFICE FOR THE LAND TITLES DIVISION OF HAMILTON AT _____ O'CLOCK ON THE _____ DAY OF _____ 2012 AND ENTERED IN THE PARCEL REGISTER FOR PROPERTY IDENTIFIER _____ AND REQUIRED CONSENTS ARE REGISTERED AS PLAN DOCUMENT No. _____

S.D. McLAREN, O.L.S. - 2012

LINCOLN ALEXANDER PARKWAY



APPROVAL CERTIFICATE
APPROVED UNDER SECTION 51 OF THE PLANNING ACT, R.S.O. 1990, c.P. 13, AS AMENDED, BY THE GENERAL MANAGER OF PLANNING AND ECONOMIC DEVELOPMENT DEPARTMENT OF THE CITY OF HAMILTON UNDER THE AUTHORITY OF 01-LAW 07-323.

19th DAY OF April, 2012
John Chan
GENERAL MANAGER, PLANNING AND ECONOMIC DEVELOPMENT
CITY OF HAMILTON

OWNER'S CERTIFICATE:
I DO HEREBY CERTIFY THAT:
1. LOTS 1 TO 37, BOTH INCLUSIVE, THE STREETS MAINLY CHARTWELL CIRCLE, BLOCK 41, BLOCK 39 AND PINEMEADOW DRIVE, THE STREETS MAINLY BLOCKS 39 AND 40, HAVE BEEN Laid OUT IN ACCORDANCE WITH OUR INSTRUMENTS.
2. THE STREETS ARE HEREBY DEDICATED TO CITY OF HAMILTON AS PUBLIC HIGHWAYS.

DATE: Mar 28 2012
JOHN CHAN - SECRETARY

- LEGEND:
- 1. DEVIATES
 - 2. MONUMENT SET
 - 3. MONUMENT 1700
 - 4. 50% AND
 - 5. STRENGTH 50% AND
 - 6. 200% STANDING WITH EAR
 - 7. A.T. MCLAREN O.L.S.
 - 8. L.E. WOOD, O.L.S.
 - 9. REGIONAL AUTHORITY OF (HAMILTON-METRO) O.L.S.
 - 10. A.J. GIBSON, O.L.S.
 - 11. MCLAREN
 - 12. O.L.S.
 - 13. O.L.S.
 - 14. O.L.S.
 - 15. O.L.S.
 - 16. O.L.S.
 - 17. O.L.S.
 - 18. O.L.S.
 - 19. O.L.S.
 - 20. O.L.S.
 - 21. O.L.S.
 - 22. O.L.S.
 - 23. O.L.S.
 - 24. O.L.S.
 - 25. O.L.S.
 - 26. O.L.S.
 - 27. O.L.S.
 - 28. O.L.S.
 - 29. O.L.S.
 - 30. O.L.S.
 - 31. O.L.S.
 - 32. O.L.S.
 - 33. O.L.S.
 - 34. O.L.S.
 - 35. O.L.S.
 - 36. O.L.S.
 - 37. O.L.S.
 - 38. O.L.S.
 - 39. O.L.S.
 - 40. O.L.S.
 - 41. O.L.S.
 - 42. O.L.S.
 - 43. O.L.S.
 - 44. O.L.S.
 - 45. O.L.S.
 - 46. O.L.S.
 - 47. O.L.S.
 - 48. O.L.S.
 - 49. O.L.S.
 - 50. O.L.S.
 - 51. O.L.S.
 - 52. O.L.S.
 - 53. O.L.S.
 - 54. O.L.S.
 - 55. O.L.S.
 - 56. O.L.S.
 - 57. O.L.S.
 - 58. O.L.S.
 - 59. O.L.S.
 - 60. O.L.S.
 - 61. O.L.S.
 - 62. O.L.S.
 - 63. O.L.S.
 - 64. O.L.S.
 - 65. O.L.S.
 - 66. O.L.S.
 - 67. O.L.S.
 - 68. O.L.S.
 - 69. O.L.S.
 - 70. O.L.S.
 - 71. O.L.S.
 - 72. O.L.S.
 - 73. O.L.S.
 - 74. O.L.S.
 - 75. O.L.S.
 - 76. O.L.S.
 - 77. O.L.S.
 - 78. O.L.S.
 - 79. O.L.S.
 - 80. O.L.S.
 - 81. O.L.S.
 - 82. O.L.S.
 - 83. O.L.S.
 - 84. O.L.S.
 - 85. O.L.S.
 - 86. O.L.S.
 - 87. O.L.S.
 - 88. O.L.S.
 - 89. O.L.S.
 - 90. O.L.S.
 - 91. O.L.S.
 - 92. O.L.S.
 - 93. O.L.S.
 - 94. O.L.S.
 - 95. O.L.S.
 - 96. O.L.S.
 - 97. O.L.S.
 - 98. O.L.S.
 - 99. O.L.S.
 - 100. O.L.S.

INTEGRATION DATA

COORDINATE REFERENCE POINTS (CRP), UTM ZONE 18, NAD83 (2011) (1997)	COORDINATE REFERENCE POINTS (CRP), UTM ZONE 18, NAD83 (2011) (1997)
POINT 1	POINT 2
POINT 3	POINT 4
POINT 5	POINT 6
POINT 7	POINT 8
POINT 9	POINT 10
POINT 11	POINT 12
POINT 13	POINT 14
POINT 15	POINT 16
POINT 17	POINT 18
POINT 19	POINT 20
POINT 21	POINT 22
POINT 23	POINT 24
POINT 25	POINT 26
POINT 27	POINT 28
POINT 29	POINT 30
POINT 31	POINT 32
POINT 33	POINT 34
POINT 35	POINT 36
POINT 37	POINT 38
POINT 39	POINT 40
POINT 41	POINT 42
POINT 43	POINT 44
POINT 45	POINT 46
POINT 47	POINT 48
POINT 49	POINT 50
POINT 51	POINT 52
POINT 53	POINT 54
POINT 55	POINT 56
POINT 57	POINT 58
POINT 59	POINT 60
POINT 61	POINT 62
POINT 63	POINT 64
POINT 65	POINT 66
POINT 67	POINT 68
POINT 69	POINT 70
POINT 71	POINT 72
POINT 73	POINT 74
POINT 75	POINT 76
POINT 77	POINT 78
POINT 79	POINT 80
POINT 81	POINT 82
POINT 83	POINT 84
POINT 85	POINT 86
POINT 87	POINT 88
POINT 89	POINT 90
POINT 91	POINT 92
POINT 93	POINT 94
POINT 95	POINT 96
POINT 97	POINT 98
POINT 99	POINT 100

BEARING NOTE:
BEARINGS ARE GRID AND ARE REFERRED TO THE NAD83 UTM CO-ORDINATE SYSTEM, ZONE 18, CENTRAL MERIDIAN BY LONGITUDE AND ARE DERIVED FROM MONUMENTS:
025920020 N 4294469.017 E 387002.787
025920097 N 4768161.723 E 392791.784

METRIC NOTE
DISTANCES SHOWN ON THIS PLAN ARE IN METRES AND CAN BE CONVERTED TO FEET BY DIVIDING BY 0.3048

SURVEYOR'S CERTIFICATE
I CERTIFY THAT:
1. THE SURVEY AND PLAN ARE CORRECT AND IN ACCORDANCE WITH THE SURVEY ACT, THE SUBDIVISION ACT AND THE REGULATION MADE UNDER THEM.
2. THE SURVEY WAS COMPLETED ON THE 17th DAY OF JUNE, 2011

A.T. McLaren Limited
LEGAL AND ENGINEERING SURVEYS
89 JOHN STREET SOUTH, SUITE 200
HAMILTON, ONTARIO, L8N 2B9
PHONE (905) 527-8559 FAX (905) 527-0032
MAY 19, 2012
S.D. McLAREN, O.L.S.