

Mailing Address:
 Hamilton City Hall
 71 Main Street West, 6th Floor
 Hamilton, ON L8P 4Y5
 www.hamilton.ca

Planning and Economic Development Department
 Growth Management Division
 Physical Address: 71 Main Street West, 5th Floor
 Phone: 905-546-2424 Ext.4348 Fax: 905-546-4202
 paul.toffoletti@hamilton.ca

Hamilton

December 10, 2015

FILE: 25T-201308

Mattamy (Waterdown) Ltd.
 c/o Ryan Oosterhoff
 433 Steels Avenue East, Suite 110
 Milton, ON, L9T 8Z4

Joseph & O'Donoghue LLP
 Adam W. Joseph
 2200 Yonge Street, Suite 1301
 Toronto, On, M4S 2C6

Rady-Pentek & Edward Surveying Ltd.
 643 Chrislea Road, Suite 7
 Woodbridge, ON, L4L 8A3

NOTICE OF MUNICIPAL NUMBERS

FOR REGISTERED PLAN 62M-1222 "UPCOUNTRY – CRANBERRY HILL PHASE 2A"

Attached is a table of the municipal addresses that have been assigned, along with a copy of the above Registered Plan for this subdivision located in the former Town of Flamborough.

Please update your records accordingly. Should you have any questions regarding the above, please contact Paul Toffoletti at 905-546-2424 Ext.4348.

NOTE: BUILDERS ARE REMINDED OF THEIR OBLIGATION TO INSTALL ADDRESS NUMBERS ON ALL NEW DWELLINGS.

Jason Thompson, MCIP, RPP
 Senior Project Manager, Legislative Approvals,
 Planning Division, Planning and Economic Development Department.

c.c.

Electrical Safety Authority
 MPAC
 City of Hamilton
 Cogeco Cable
 Horizon Utilities
 Canada Post
 Angus GeoSolutions Inc.
 Blue Line Taxi

Union Gas
 Fire and Police
 Bell Canada Eng.
 Bell Street Guide
 Bell Canada (911)
 Map Mobility
 DMTI Spatial
 DARTS

Ham.-Went. School Boards
 (Public & Separate)
 Canada Mortgage and Housing Corp.
 Hamilton CACC Ambulance Dispatch
 Hamilton-Burlington District Real Estate
 Canadian Cartographic Corp.
 Hamilton Automobile Club
 Telus

62M- 1222		UPCOUNTRY PHASE 2A 25T-201308	
Lot No.	Address	Lot No.	Address
1	64 McMonies Drive	Block 33	131 McMonies Drive
2	60 McMonies Drive	Block 33	129 McMonies Drive
3	56 McMonies Drive	Block 33	127 McMonies Drive
4	52 McMonies Drive	Block 33	125 McMonies Drive
5	48 McMonies Drive		
6	44 McMonies Drive	Block 34	123 McMonies Drive
7	40 McMonies Drive	Block 34	121 McMonies Drive
8	36 McMonies Drive	Block 34	119 McMonies Drive
9	32 McMonies Drive		
10	28 McMonies Drive	Block 35	117 McMonies Drive
11	24 McMonies Drive	Block 35	115 McMonies Drive
12	20 McMonies Drive	Block 35	113 McMonies Drive
13	12 McMonies Drive	Block 35	111 McMonies Drive
14	11 McMonies Drive	Block 35	109 McMonies Drive
15	15 McMonies Drive		
16	19 McMonies Drive	Block 36	107 McMonies Drive
17	23 McMonies Drive	Block 36	105 McMonies Drive
18	27 McMonies Drive	Block 36	103 McMonies Drive
19	33 McMonies Drive	Block 36	101 McMonies Drive
20	37 McMonies Drive		
21	43 McMonies Drive	Block 37	98 McMonies Drive
22	47 McMonies Drive	Block 37	100 McMonies Drive
23	270 Spring Creek Drive	Block 37	102 McMonies Drive
24	276 Spring Creek Drive		
25	282 Spring Creek Drive	Block 38	104 McMonies Drive
26	286 Spring Creek Drive	Block 38	106 McMonies Drive
27	290 Spring Creek Drive	Block 38	108 McMonies Drive
Block 28-1	67 McMonies Drive	Block 39	128 McMonies Drive
Block 28-2	69 McMonies Drive	Block 39	130 McMonies Drive
Block 28-3	71 McMonies Drive	Block 39	132 McMonies Drive
Block 28-4	73 McMonies Drive		
Block 28-5	75 McMonies Drive	Block 40	134 McMonies Drive
Block 28-6	77 McMonies Drive	Block 40	136 McMonies Drive
Block 28-7	79 McMonies Drive	Block 40	138 McMonies Drive
Block 29-1	163 McMonies Drive	Block 41	158 McMonies Drive
Block 29-2	161 McMonies Drive	Block 41	160 McMonies Drive
Block 29-3	159 McMonies Drive	Block 41	162 McMonies Drive
Block 29-4	157 McMonies Drive	Block 41	164 McMonies Drive
Block 29-5	155 McMonies Drive	Block 41	166 McMonies Drive
		Block 41	168 McMonies Drive
Block 30-1	153 McMonies Drive	Block 41	170 McMonies Drive
Block 30-2	151 McMonies Drive		
Block 30-3	149 McMonies Drive		
Block 30-4	147 McMonies Drive		
Block 31-1	145 McMonies Drive		
Block 31-2	143 McMonies Drive		
Block 31-3	141 McMonies Drive		
Block 32-1	139 McMonies Drive		
Block 32-2	137 McMonies Drive		
Block 32-3	135 McMonies Drive		
Block 32-4	133 McMonies Drive		

62M-1222

KNOWN AS PARKSIDE DRIVE
REGIONAL ROAD No 507
(ROAD ALLOWANCE BETWEEN CONCESSIONS 3 AND 4
P.I.N.' 17515 - 0048
LIMIT OF ORIGINAL ROAD ALLOWANCE

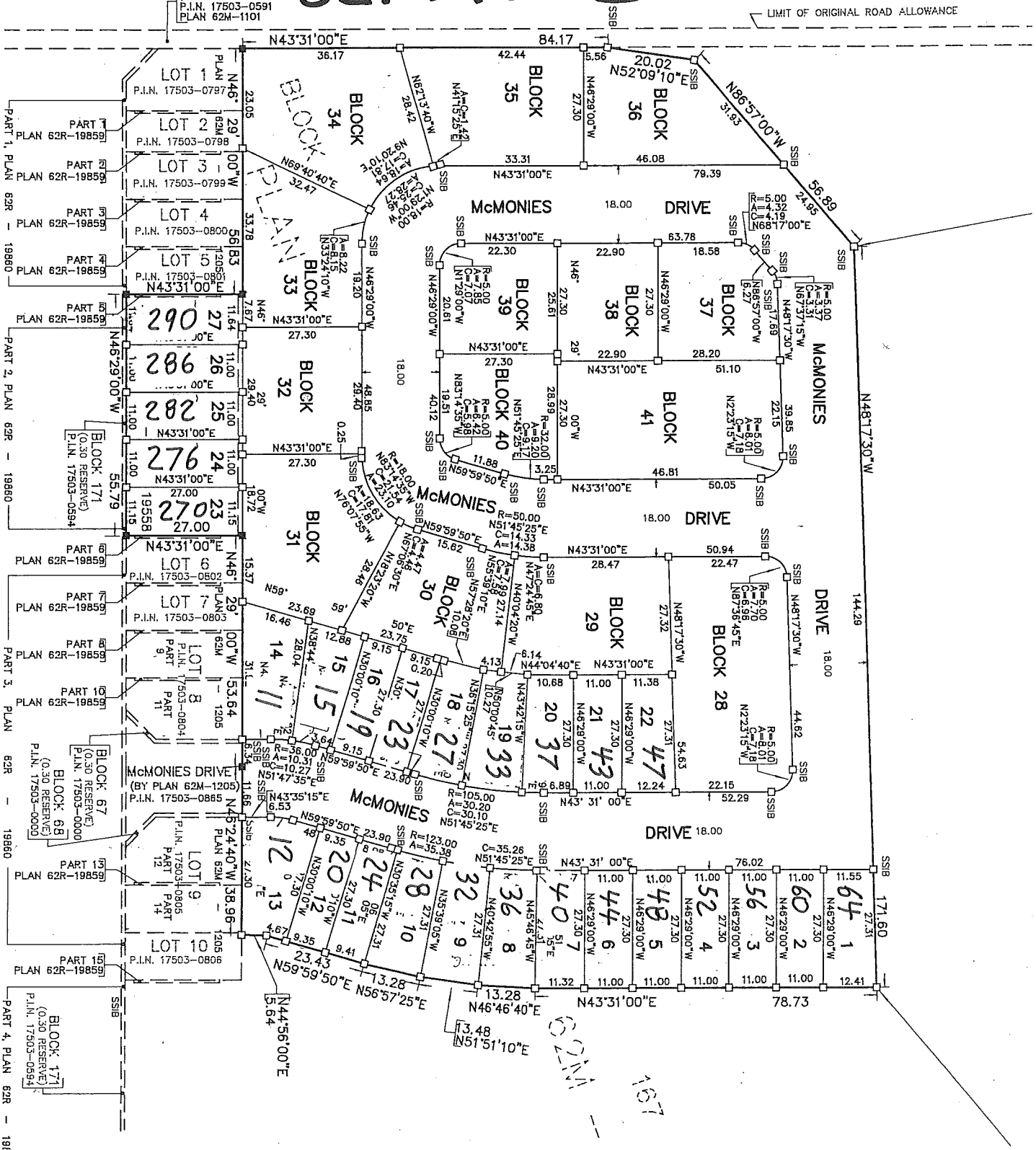
BLOCK 168
(STREET WIDENING)
P.I.N. 17503-0591
PLAN 62M-1101

PLAN

62M

1101

SPRING CREEK DRIVE
(BY PLAN 62M-1101)
P.I.N. 17503-0603



PARKSIDE DRIVE



36-4	101	37-1	98	41-7	170
36-3	103	37-2	100	41-6	168
36-2	105	37-3	102	41-5	166
36-1	107	38-1	104	41-4	164
35-5	109	38-2	106	41-3	162
35-4	111	38-3	108	41-2	160
35-3	113	39-1	120	41-1	158
35-2	115	39-2	130	40-3	138
35-1	117	39-3	132	40-2	136
		40-1	134	40-1	138

31-3	141	29-1	163	28-7	79
31-2	143	29-2	161	28-6	77
31-1	145	29-3	159	28-5	75
30-4	147	29-4	157	28-4	73
30-3	149	29-5	155	28-3	71
30-2	151	30-1	153	28-2	69
30-1	153	20	37	28-1	67
18	27	19	33		
17	23	18	33		
16	19	17	23		
15	15	16	19		
14	11	15	15		

27	2062
26	982
25	282
24	972
23	270

64	1
60	2
56	3
52	4
48	5
44	6
40	7
36	8
32	9
28	10
24	11
20	12
12	13